



# PROGRAM COMMITTEE

June 8, 2016

Education Centre, Room 340-D

---

## **AGENDA**

12:00 p.m.

1. Call to Order
2. Approval of the Agenda
3. French Immersion – Location Strategy & Application Process (draft for consultation)
4. English as a Second Language/English Literacy Development (ESL/ELD) Update
5. Next Program Committee Meeting: September 2016
6. Adjournment



## EXECUTIVE REPORT TO PROGRAM COMMITTEE

**TO:** Program Committee

**FROM:** Manny Figueiredo, Director of Education

**DATE:** June 8, 2016

**PREPARED BY:** Pam Reinholdt, Superintendent – Transitions  
Ellen Warling – Manager, Planning and Accommodation  
Ian Hopkins, Planner, Planning and Accommodations

**RE:** French Immersion – Location Strategy & Application Process

---

Action

X

Monitoring

**Action:**

That the French Immersion Program Location Strategy and Application Process be recommended for consultation.

### HAMILTON-WENTWORTH DISTRICT SCHOOL BOARD

#### FRENCH IMMERSION STRATEGY (Elementary)

#### **OVERVIEW**

Hamilton-Wentworth District School Board (HWDSB) has been offering French Immersion (FI) to non-French speaking students for many years. We recognize that French is one of Canada's two official languages and it is a language that is used widely around the world. Proficiency in French is a valuable skill and an element of student achievement. We have been, and will continue to provide quality programs which develop students' ability communicate in French.

HWDSB believes in equity of access and outcomes in terms of our program delivery. It is our belief that all students have the ability to learn French. Our French language programs include English language learners and students with special education needs and are inclusive and reflective of our diverse communities

French Immersion in HWDSB is an optional program offered beginning in Grade 1. Elementary students are taught French as a subject and French serves as the primary language of instruction for other content areas in the beginning years of the program. HWDSB exceeds the Ministry guidelines for the minimum number of hours of instruction required for French Immersion in grades 1 through 8, which provides a solid foundation for students who wish to pursue French Immersion in secondary school.

Transportation for French Immersion is offered as per our Transportation Policy, which is available on our Board website.

### **CURRENT STATUS OF FRENCH IMMERSION IN HWDSB**

We currently have 15 elementary schools offering French Immersion. Michaelle Jean and Norwood are single track FI schools. The remaining 13 are dual track schools.

The current enrolments indicate some pressure points in accommodations. For the upcoming year, these pressure points have been addressed at Earl Kitchener, Guy Brown, and A M Cunningham. As well, Ancaster Senior currently accommodates Grade 7 FI students from Fessenden. Grade 8's FI students from Fessenden attend Norwood. In the 2016-17 school year, Ancaster Senior will accommodate Grade 7 and 8 FI students from Fessenden.

To provide equity of access to FI locations, ensure viability of the FI program as it grows, and balance between FI and English in schools, it will be necessary to consider boundary reviews during the 2016-2017 school year.

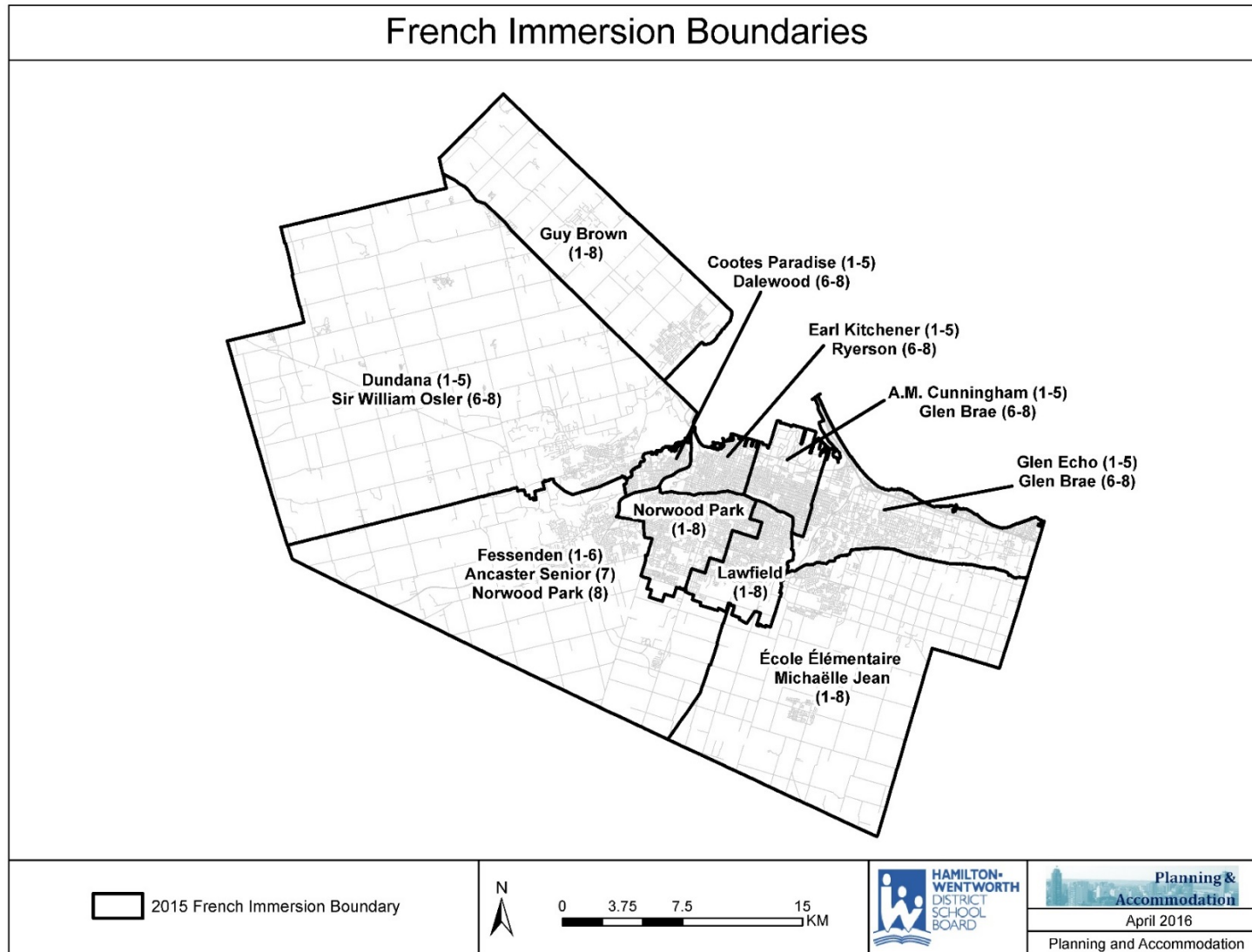
### **Current Boundaries, Locations and Enrolment of All French Immersion Programs**

<b>School</b>	<b>English</b>	<b>FI</b>	<b>OTG*</b>	<b>Portables**</b>
<b>AM Cunningham</b>	JK-5	1-5	409	5
<b>Ancaster Senior</b>	7-8	7	375	0
<b>Cootes Paradise</b>	JK-5	1-5	678	0
<b>Dalewood</b>	6-8	6-8	366	6
<b>Dundana</b>	JK-5	1-5	398	0
<b>Earl Kitchener</b>	JK-5	1-5	557	0
<b>Ecole Elementaire Michaelle Jean</b>	-	1-8	274	0
<b>Fessenden</b>	JK-6	1-6	383	6
<b>Glen Brae</b>	6-8	6-8	331	0
<b>Glen Echo</b>	JK-5	1-5	314	3
<b>Guy Brown</b>	JK-8	1-8	632	2
<b>Lawfield</b>	JK-8	1-8	602	4
<b>Norwood Park</b>	-	1-8	464	3
<b>Ryerson</b>	6-8	6-8	343	4
<b>Sir William Osler</b>	JK-8	6-8	602	0

**\*OTG: On-the-Ground Capacity:** The rated capacity for a facility (number of students the permanent structure can accommodate) as indicated on the Ministry of Education's School Facilities Inventory System which is a web-based database containing facility-related data of all schools in Ontario. Depending on the type of room, the space will have a different loading (i.e. elementary classroom at 23 pupil places and kindergarten rooms 26 pupil places). This value does not represent the physical limit of the space within the building.

**\*\*Portable count as of April 2016**





Map I: All French Immersion Boundaries

**Current Enrolment Projections by FI Catchment Area****East Hamilton**

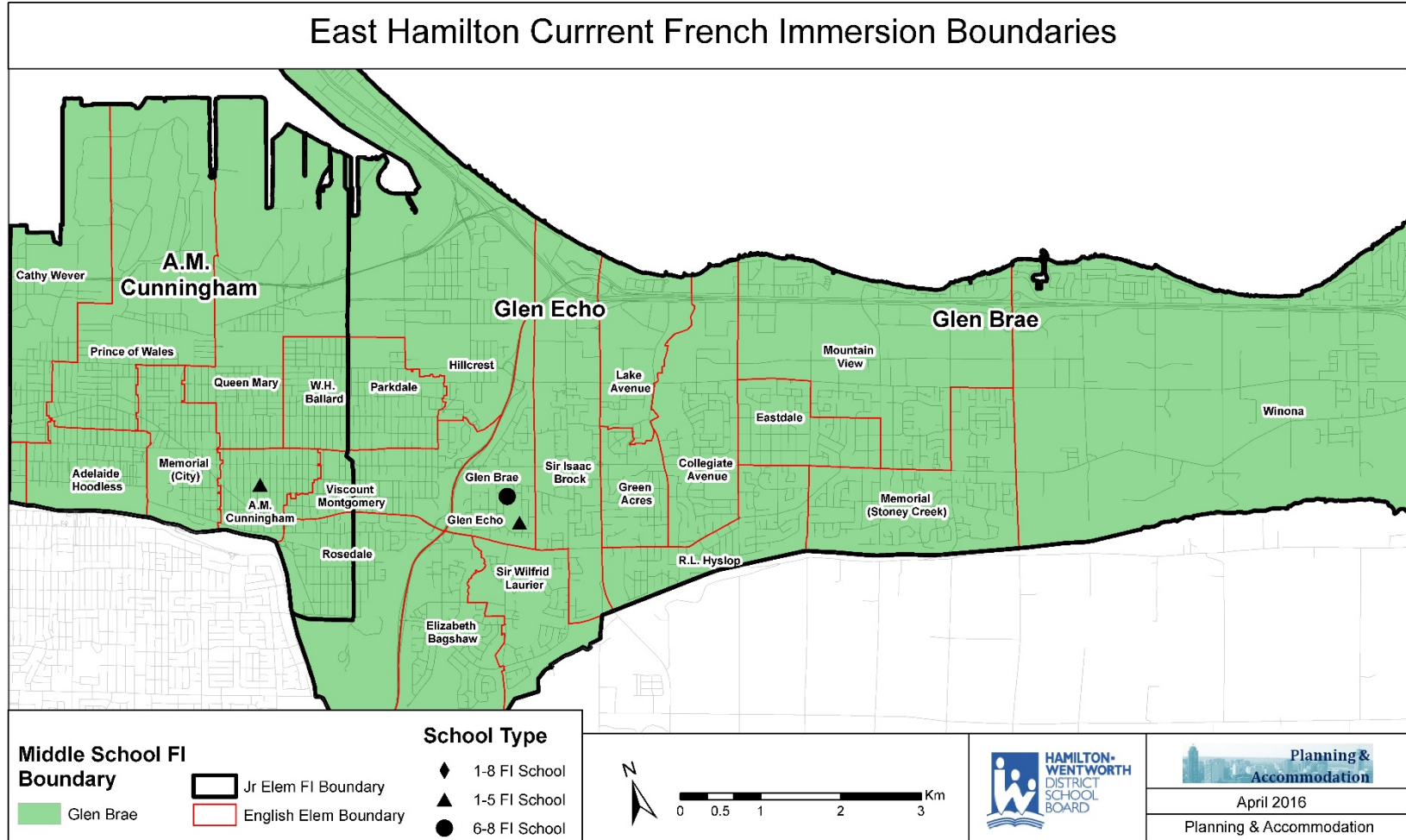
<b>AM Cunningham</b>	<b>2015</b>	<b>2016</b>	<b>2017</b>	<b>2018</b>	<b>2019</b>	<b>2020</b>
<b>English (JK-5)</b>	151	150	151	156	165	169
<b>French (1-5)</b>	255	251	230	216	216	206
<b>Total</b>	406	402	382	372	380	375
<b>Utilization</b>	99%	98%	93%	91%	93%	92%
<b>Utilization with Portables</b>	77%	77%	73%	71%	73%	72%

A.M. Cunningham has 5 portables on site

<b>Glen Brae</b>	<b>2015</b>	<b>2016</b>	<b>2017</b>	<b>2018</b>	<b>2019</b>	<b>2020</b>
<b>English (6-8)</b>	166	167	176	176	181	183
<b>French (6-8)</b>	163	174	181	191	176	179
<b>Total</b>	329	340	357	368	357	362
<b>Utilization</b>	99%	103%	108%	111%	108%	109%

<b>Glen Echo</b>	<b>2015</b>	<b>2016</b>	<b>2017</b>	<b>2018</b>	<b>2019</b>	<b>2020</b>
<b>English (JK-5)</b>	172	178	178	182	192	192
<b>French (1-5)</b>	120	111	112	109	113	106
<b>Total</b>	292	289	289	291	305	298
<b>Utilization</b>	93%	92%	92%	93%	97%	95%
<b>Utilization with Portables</b>	76%	75%	75%	76%	80%	78%

Glen Echo has 3 portables on site



Map 2: East Hamilton FI

**West Hamilton**

<b>Earl Kitchener</b>	<b>2015</b>	<b>2016</b>	<b>2017</b>	<b>2018</b>	<b>2019</b>	<b>2020</b>
<b>English (JK-5)</b>	204	195	185	175	175	176
<b>French (I-5)</b>	355	362	361	357	343	334
<b>Total</b>	559	557	545	532	518	510
<b>Utilization</b>	100%	100%	98%	96%	93%	92%

<b>Ryerson</b>	<b>2015</b>	<b>2016</b>	<b>2017</b>	<b>2018</b>	<b>2019</b>	<b>2020</b>
<b>English (6-8)</b>	228	226	227	215	219	206
<b>French (6-8)</b>	142	154	165	167	180	183
<b>Total</b>	370	380	392	382	399	389
<b>Utilization</b>	108%	111%	114%	111%	116%	113%
<b>Utilization with Portables</b>	85%	87%	90%	88%	92%	89%

Ryerson has 4 portables on site

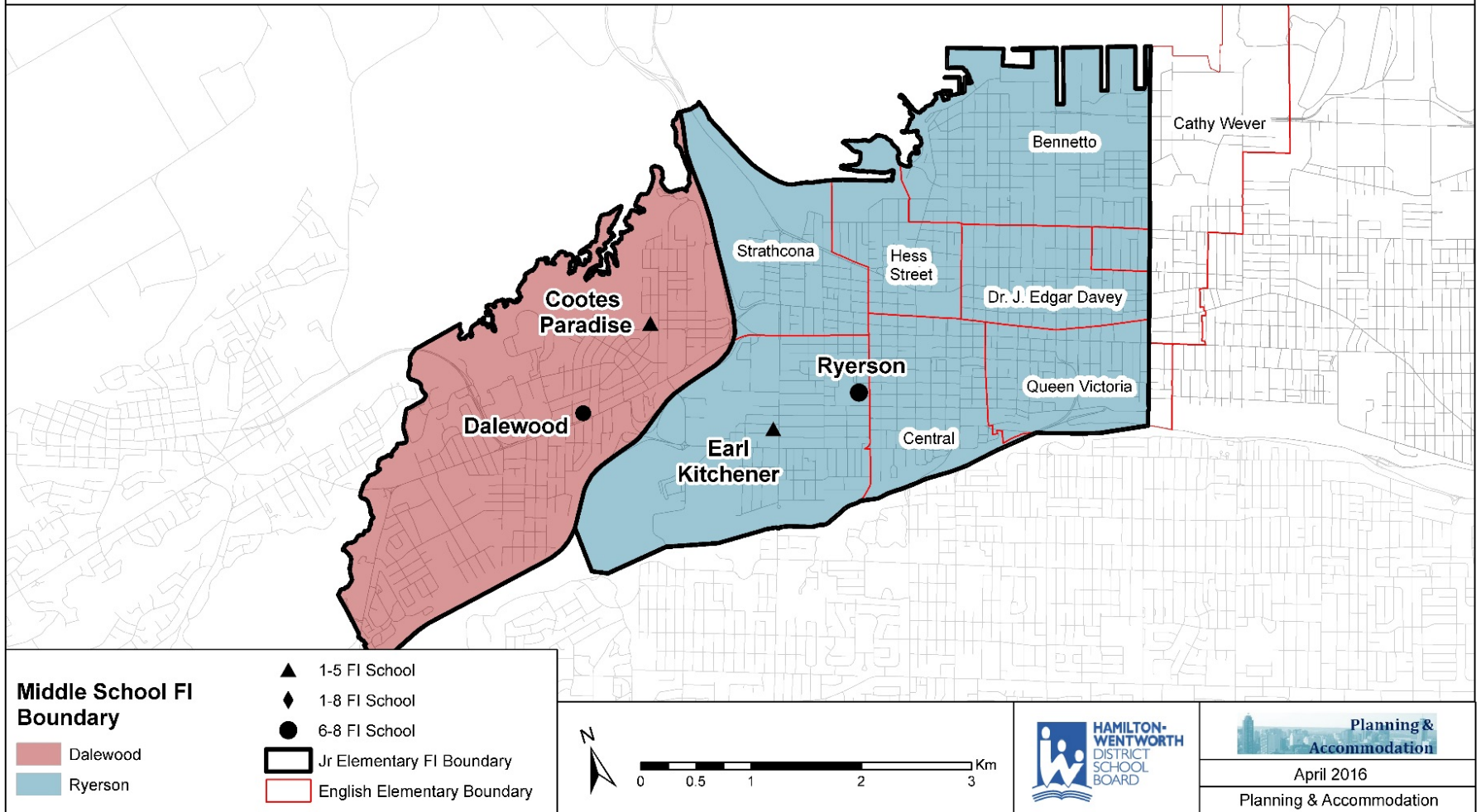
<b>Cootes Paradise</b>	<b>2015</b>	<b>2016</b>	<b>2017</b>	<b>2018</b>	<b>2019</b>	<b>2020</b>
<b>English (JK-5)</b>	375	362	357	348	341	342
<b>French (I-5)</b>	195	203	213	219	222	237
<b>Total</b>	570	565	570	568	563	579
<b>Utilization</b>	84%	83%	84%	84%	83%	85%

<b>Dalewood</b>	<b>2015</b>	<b>2016</b>	<b>2017</b>	<b>2018</b>	<b>2019</b>	<b>2020</b>
<b>English (6-8)</b>	196	204	186	181	170	163
<b>French (6-8)</b>	91	94	100	92	98	92
<b>Total</b>	287	298	286	273	268	255
<b>Utilization</b>	78%	81%	78%	75%	73%	70%

Dalewood has 6 portables on site due to renovations to facility and will be removed summer of 2016



## West Hamilton Current French Immersion Boundaries



Map 3: West Hamilton FI

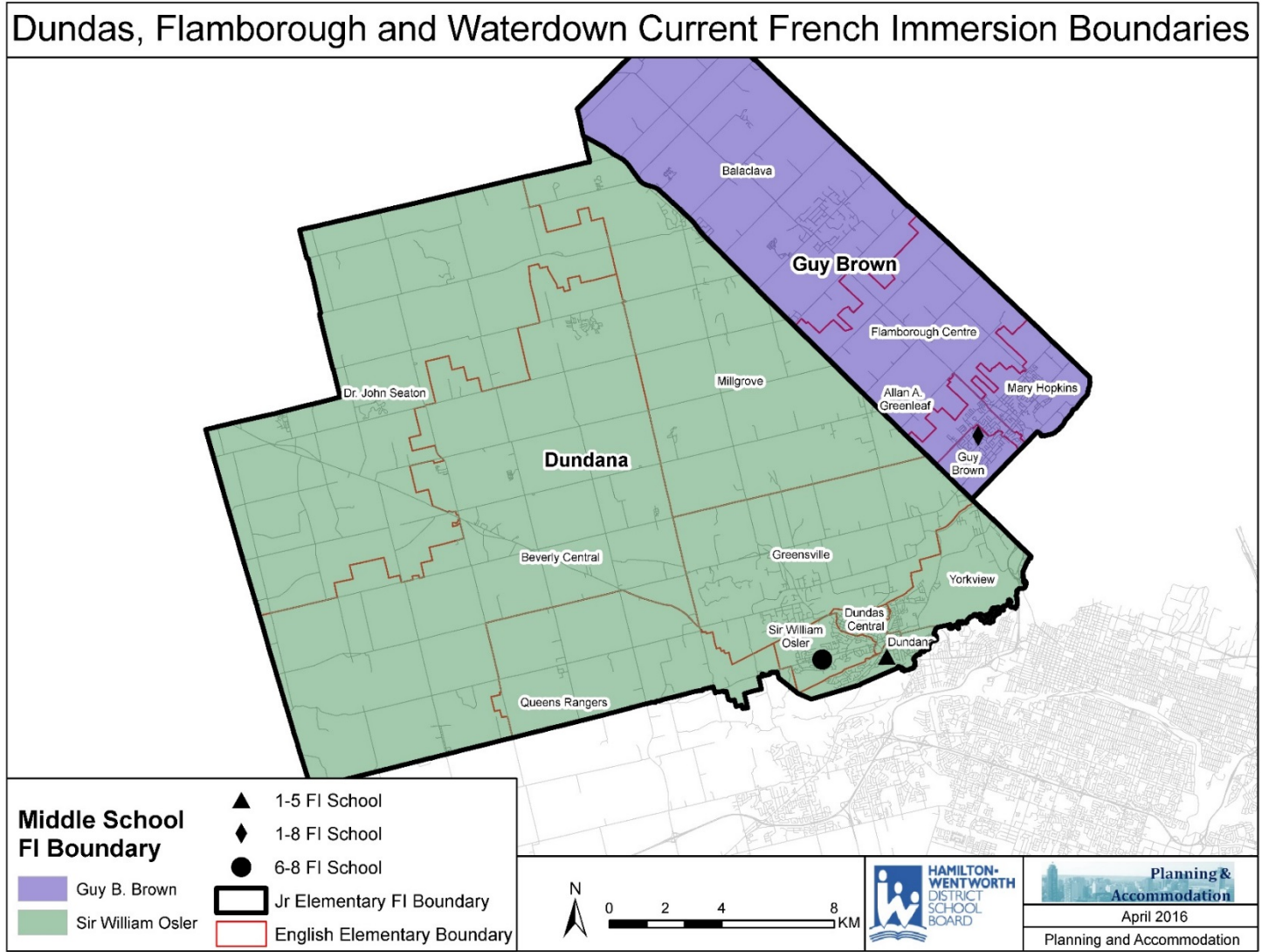
**Dundas / Waterdown/Flamborough**

<b>Sir William Osler</b>	<b>2015</b>	<b>2016</b>	<b>2017</b>	<b>2018</b>	<b>2019</b>	<b>2020</b>
<b>English (JK-8)</b>	520	504	481	483	468	459
<b>French (6-8)</b>	80	86	102	100	116	105
<b>Total</b>	600	590	583	583	584	564
<b>Utilization</b>	100%	98%	97%	97%	97%	94%

<b>Dundana</b>	<b>2015</b>	<b>2016</b>	<b>2017</b>	<b>2018</b>	<b>2019</b>	<b>2020</b>
<b>English (JK-5)</b>	160	163	163	162	169	177
<b>French (1-5)</b>	196	207	196	203	199	203
<b>Total</b>	356	369	359	366	367	380
<b>Utilization</b>	89%	93%	90%	92%	92%	95%

<b>Guy Brown</b>	<b>2015</b>	<b>2016</b>	<b>2017</b>	<b>2018</b>	<b>2019</b>	<b>2020</b>
<b>English (JK-8)</b>	356	363	357	363	381	368
<b>French (1-8)</b>	346	365	386	397	416	429
<b>Total</b>	702	728	743	760	797	798
<b>Utilization</b>	111%	115%	118%	120%	126%	126%
<b>Utilization with Portables</b>	104%	107%	110%	112%	118%	118%

Guy Brown has 2 portables on site



Map 4: Dundas, Waterdown and Flamborough FI

**Ancaster / Mountain/Upper Stoney Creek/Glanbrook**

<b>Ancaster Senior</b>	<b>2015</b>	<b>2016</b>	<b>2017</b>	<b>2018</b>	<b>2019</b>	<b>2020</b>
<b>English (7-8)</b>	287	281	268	259	256	215
<b>French (7)*</b>	12	39	54	65	88	84
<b>Total</b>	299	320	322	324	344	300
<b>Utilization</b>	80%	85%	86%	86%	92%	80%

\*In September 2016 Ancaster Senior will accommodate grade 7 and 8 French Immersion. Current grade 8 FI students in this area attend Norwood Park.

<b>Fessenden</b>	<b>2015</b>	<b>2016</b>	<b>2017</b>	<b>2018</b>	<b>2019</b>	<b>2020</b>
<b>English (JK-6)</b>	275	253	241	231	227	232
<b>French (1-6)</b>	223	240	252	254	244	250
<b>Total</b>	498	493	493	485	471	483
<b>Utilization</b>	130%	129%	129%	127%	123%	126%
<b>Utilization with Portables</b>	96%	95%	95%	93%	90%	93%

Fessenden has 6 portables on site

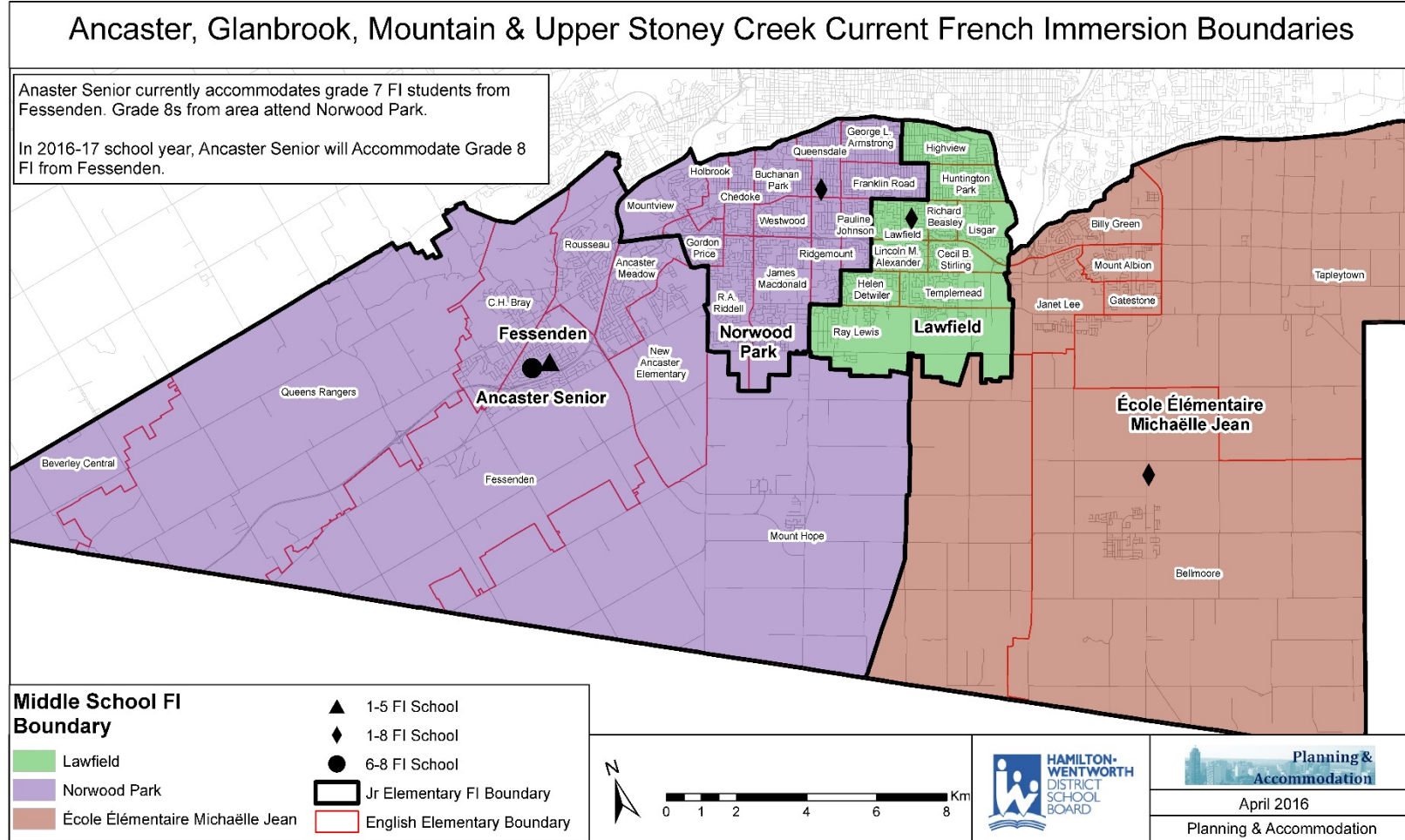
<b>Norwood Park</b>	<b>2015</b>	<b>2016</b>	<b>2017</b>	<b>2018</b>	<b>2019</b>	<b>2020</b>
<b>French (1-8)</b>	476	488	492	483	480	475
<b>Total</b>	476	488	492	483	480	475
<b>Utilization</b>	103%	105%	106%	104%	103%	102%
<b>Utilization with Portables</b>	89%	92%	92%	91%	90%	89%

Norwood Park has 3 portables on site

<b>Lawfield</b>	<b>2015</b>	<b>2016</b>	<b>2017</b>	<b>2018</b>	<b>2019</b>	<b>2020</b>
<b>English (JK-8)</b>	433	412	408	408	401	396
<b>French (1-8)</b>	294	308	299	303	307	304
<b>Total</b>	727	720	708	711	707	699
<b>Utilization</b>	121%	120%	118%	118%	117%	116%
<b>Utilization with Portables</b>	105%	104%	102%	102%	102%	101%

Lawfield 4 portables on site

<b>Ecole Elementaire Michaele Jean</b>	<b>2015</b>	<b>2016</b>	<b>2017</b>	<b>2018</b>	<b>2019</b>	<b>2020</b>
<b>French</b>	156	182	208	223	241	253
<b>Total</b>	156	182	208	223	241	253
<b>Utilization</b>	57%	66%	76%	81%	88%	92%



Map 5: Ancaster, Mountain, Upper Stoney Creek and Glanbrook FI

## **PROPOSED FRENCH IMMERSION BOUNDARIES AND LOCATIONS**

The French Immersion Strategy is focussed on ensuring that all students who wish to enrol in French Immersion are able to do so.

Due to a continuing interest in French Immersion, a long term plan is necessary to address the accommodation issues for the 2017-18 school year and beyond. This would allow the Board to provide stability of program placement, ensure a balanced approach to student enrolment for English and French Immersion, and effective communication to parents and students regarding program placement. Below are proposed boundaries and school locations for French Immersion. It is recommended that boundary reviews, where appropriate, take place early in the 2016-2017 school year to allow for timely communication to parents regarding FI locations.

It is the goal of HWDSB to provide access to French Immersion programs for those who wish to pursue it. The Planning and Accommodation Department have provided information to assist in determining proposed boundaries and proposed program locations for future FI programs.

### **East Hamilton French Immersion Boundaries/Locations**

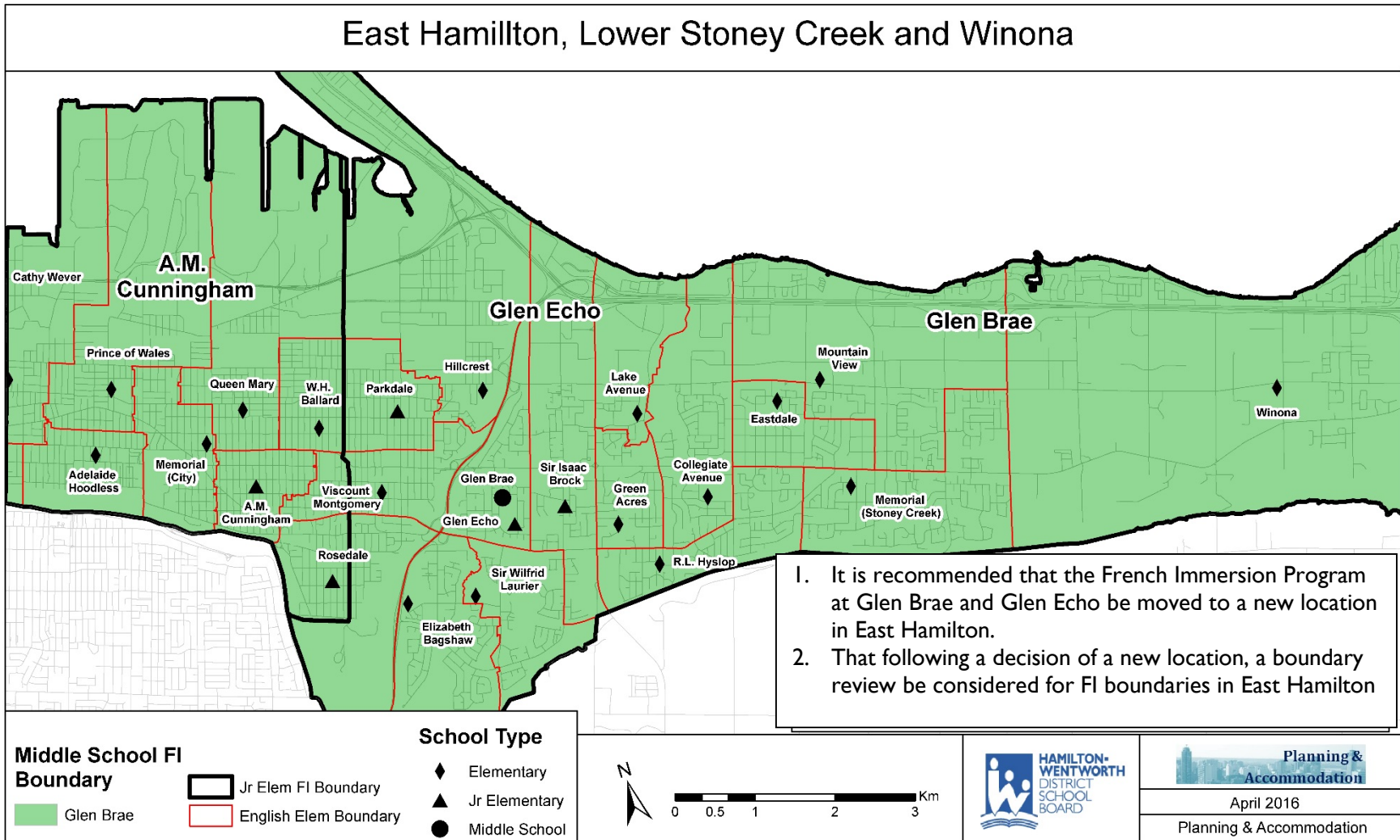
**Synopsis:** Students from East Hamilton and Lower Stoney Creek currently attend French Immersion Programs at Glen Echo for grades 1-5, and Glen Brae for grades 6-8. This includes students from Prince of Wales, Cathy Wever, Queen Mary, Adelaide Hoodless, Memorial (City), AM Cunningham, Viscount Montgomery, Elizabeth Bagshaw, Rosedale, Sir Wilfrid Laurier, Glen Echo, Sir Isaac Brock, Lake Avenue, Hillcrest, Parkdale and WH Ballard.

### **Recommendations**

- 1) It is recommended that the French Immersion Program at Glen Brae and Glen Echo be moved to a new location in East Hamilton.
- 2) That following a decision of a new location, a boundary review be considered for FI boundaries in East Hamilton

**Rationale:** The total number of students attending currently from East Hamilton is 102 and from Lower Stoney Creek is 49. Moving the French Immersion Program from Glen Echo/Glen Brae would allow for more balanced enrolments in East Hamilton Schools. At the East Hamilton Accommodation Review (AR) a concern was raised regarding the large size of one or more schools in each of the scenarios. Moving the French Immersion Program from Glen Echo/Glen Brae would allow for more equitable distribution of students in the remaining schools currently in this Pupil Accommodation Review (FI students at Glen Echo and Glen Brae are included in the numbers used in the recent ARs).

In East Hamilton there are approximately 700 available pupil places between A.M. Cunningham Hillcrest, Parkdale, Viscount Montgomery and W.H. Ballard which could accommodate the relocated French Immersion program. The location would be determined based on community consultation and Trustee approval.



Map 6: East Hamilton FI Expansion

## Lower Stoney Creek / Winona French Immersion Boundaries/Locations 2017 (Memorial (SC))

**Synopsis:** The FI students from the following schools currently attend FI at Glen Echo and Glen Brae: Collegiate, Eastdale, Green Acres, Memorial (SC), Mountain View, R.L. Hyslop and Winona.

### **Recommendations:**

- a) That a French Immersion Program be offered at a Lower Stoney Creek school beginning with Grade I registration for September, 2017.
- b) That an FI boundary review be undertaken for the FI program to include schools in Lower Stoney Creek and Winona.

That a yearly review of the program be conducted in this area to monitor the growth, and if needed, consider an additional location depending on the where the student enrolment is growing.

**Rationale:** The Lower Stoney Creek AR is recommending that the Board consider the implementation of French Immersion at Memorial (SC) in the Lower Stoney Creek area. With new schools being proposed for the Lower Stoney Creek area, it is suggested that a new program be considered for opening in this geographic area. This would address the recommendation from the Lower Stoney Creek AR, as well as consider the equity of opportunity and access for programs across the district. At present, Lower Stoney Creek/Winona has no French Immersion Programs within the boundary.

The new program would be used as a holding site for students from the Winona area taking French Immersion. Upon the construction of a second school in Winona, a new FI program would be considered for this location. If the program at Memorial (SC) were to grow more rapidly than expected, staff would recommend a second location within Lower Stoney Creek be opened which best suits student needs and balances enrolments between the three new schools.

French immersion projections are created using a set of assumptions for the creation of a new FI site:

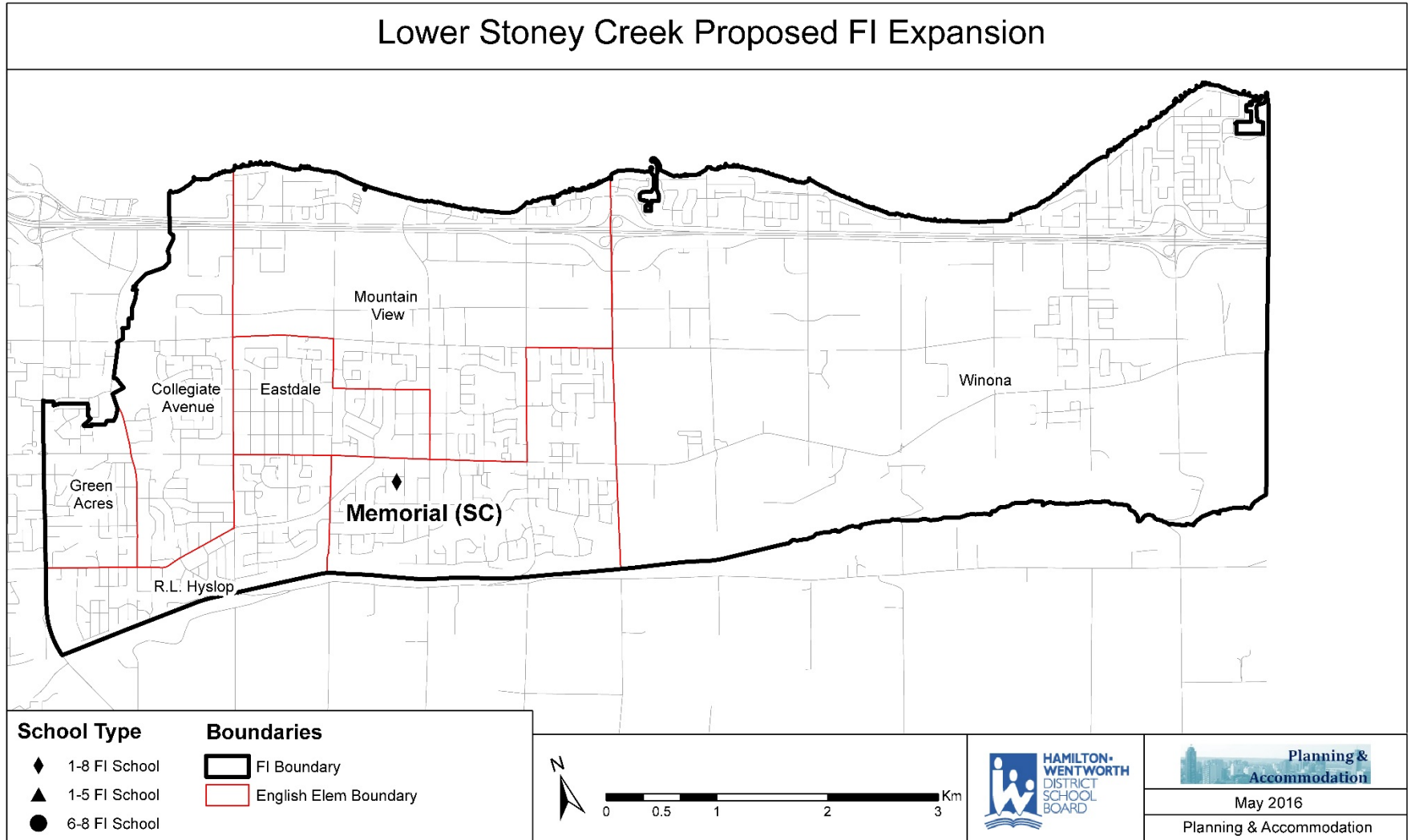
- Assume that 30-40% of SK students from the school where the program is located will take FI (Similar to other programs within HWDSB)
- Assume that 15% of SK students from associated schools will attend FI (Board Average, 15% of grade I students are in FI)

The following are projections for Memorial (SC) FI to begin in 2017 with a grade I implementation:

<b>Memorial (SC)</b>	<b>2015</b>	<b>2016</b>	<b>2017</b>	<b>2018</b>	<b>2019</b>	<b>2020</b>
<b>English (JK-8)</b>	345	347	320	311	312	304
<b>French (I-8)</b>			24	51	76	100
<b>Total</b>	345	347	344	362	388	404
<b>Utilization</b>	96%	97%	96%	101%	108%	113%
<b>Utilization with Portables</b>	91%	91%	90%	95%	102%	106%

Pending approval of the Lower Stoney Creek Accommodation Review proposal, it is anticipated that a new JK-8 facility will be built on Memorial (SC) site once Ministry of Education funding is approved. Once complete the facility will accommodate the FI program.





Map 7: Lower Stoney Creek Proposed FI Expansion

## West Hamilton French Immersion Boundaries and Program Locations 2017 (Earl Kitchener, Ryerson, Bennetto)

**Synopsis:** Earl Kitchener currently has a French Immersion program for grades 1-5, with students attending Ryerson for FI Grades 6, 7, and 8. Earl Kitchener FI is projected to stabilize or decrease, however, the configuration of the building poses accommodation challenges. As well, the size of the property at Earl Kitchener is not conducive to portables on site. To manage the accommodation challenges at both Earl Kitchener and Ryerson, consideration to an additional FI site in West Hamilton is necessary.

Rationale:

Currently students at Bennetto attend FI at Earl Kitchener and Ryerson

### **Recommendation:**

- a) that an FI Boundary Review be considered for Earl Kitchener, Ryerson, and Bennetto with the potential to open a second FI site at Bennetto in 2017 beginning with a phase-in of primary grades.
- b) A boundary review is suggested for the current West Hamilton FI Boundary area.

<b>AM Cunningham</b>	<b>2015</b>	<b>2016</b>	<b>2017</b>	<b>2018</b>	<b>2019</b>	<b>2020</b>
<b>English (JK-5)</b>	151	150	151	156	165	169
<b>French (1-5)</b>	255	251	200	180	175	171
<b>Total</b>	406	402	351	336	339	339
<b>Utilization</b>	99%	98%	86%	82%	83%	83%
<b>Utilization with Portables</b>	77%	77%	67%	64%	65%	65%

A.M. Cunningham has 5 portables on site

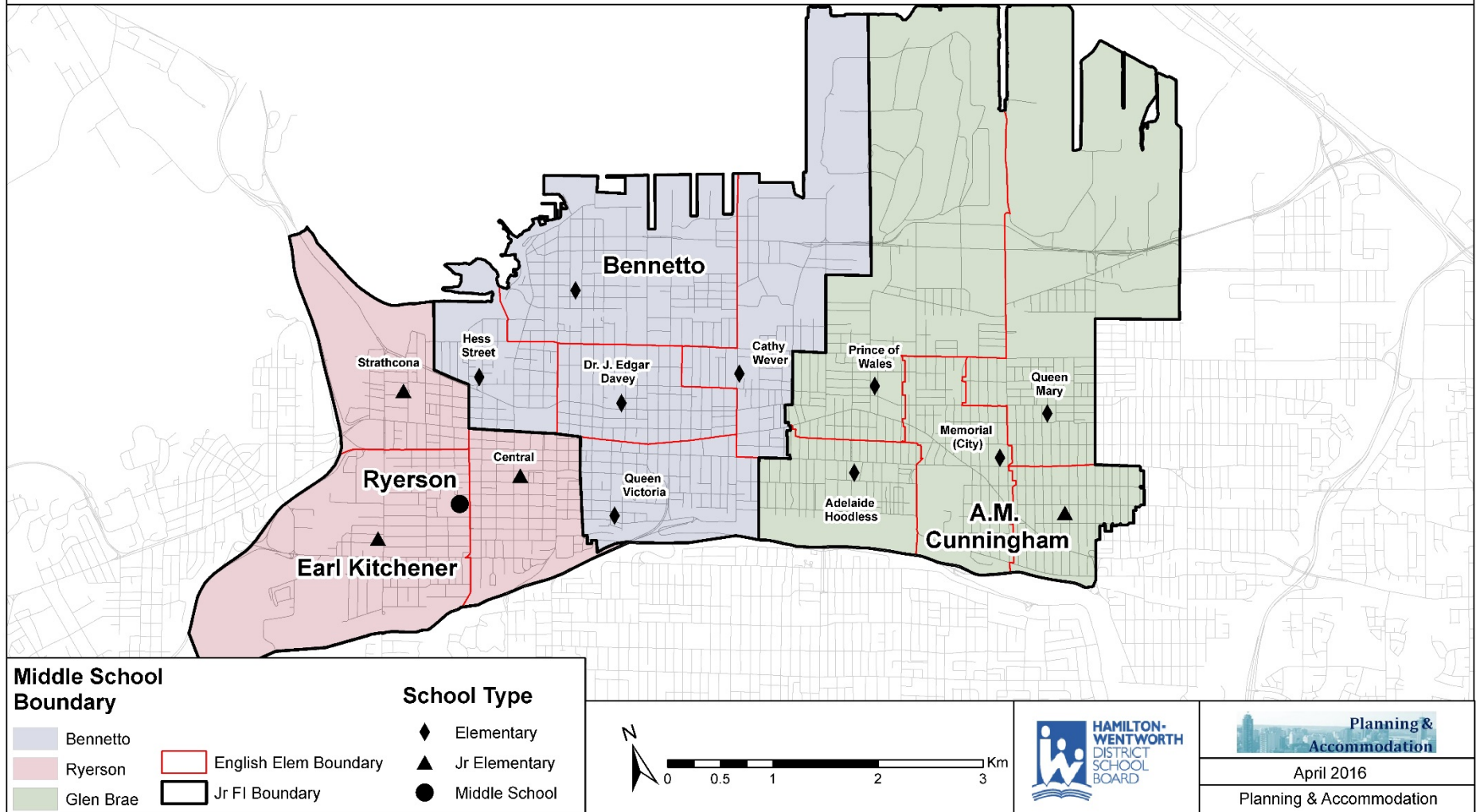
<b>Bennetto</b>	<b>2015</b>	<b>2016</b>	<b>2017</b>	<b>2018</b>	<b>2019</b>	<b>2020</b>
<b>English (JK-8)</b>	491	476	467	455	442	421
<b>French (1-8)</b>			68	92	117	139
<b>Total</b>	491	476	544	559	571	581
<b>Utilization</b>	66%	64%	73%	75%	77%	78%

<b>Earl Kitchener</b>	<b>2015</b>	<b>2016</b>	<b>2017</b>	<b>2018</b>	<b>2019</b>	<b>2020</b>
<b>English (JK-5)</b>	204	195	185	175	175	176
<b>French (1-5)</b>	355	362	330	320	299	293
<b>Total</b>	559	557	515	495	474	469
<b>Utilization</b>	100%	100%	92%	89%	85%	84%

<b>Ryerson</b>	<b>2015</b>	<b>2016</b>	<b>2017</b>	<b>2018</b>	<b>2019</b>	<b>2020</b>
<b>English (6-8)</b>	228	226	227	215	219	206
<b>French (6-8)</b>	142	154	165	167	180	174
<b>Total</b>	370	380	392	382	398	380
<b>Utilization</b>	108%	111%	114%	111%	116%	111%
<b>Utilization with Portables</b>	85%	87%	90%	88%	91%	87%

Enrolment projections depict Bennetto program implemented with grades 1-3.

# West Hamilton: Proposed Expansion for September 2017



Map 8: West Hamilton FI Expansion

## Waterdown and Flamborough French Immersion Locations 2017

(Flamborough Centre, Guy Brown, Mary Hopkins)

**Synopsis:** A plan is in place for the 2016-2017 school year to address the accommodation challenges at Guy Brown. As the program continues to grow, a temporary relief plan needs to be in place for September, 2017. The Board is planning a new school for the East Flamborough area in the future, and Mary Hopkins/Flamborough Centre would be holding schools for French Immersion until such time as the new school is built.

**Rationale:** The majority of students who live in the Mary Hopkins English catchment area who attend French Immersion at Guy Brown are within walking distance of Mary Hopkins. It is suggested students who are in FI Grades 1 to 3 in September 2017 residing in the Mary Hopkins, Balacava and Flamborough Centre English catchment areas attend Mary Hopkins for French Immersion. This program would expand to grade 5 and in 2020, the students would move to Flamborough Centre for grade 6, 7, and 8 French Immersion. Mary Hopkins currently has a 6 room portapak constructed on site. Although the portapak is currently not being used it has been properly maintained to remain on site for future enrolment growth from program change and new development.

### **Recommendation:**

- a) That an FI Boundary Review be considered for Guy Brown, Mary Hopkins, Flamborough Centre and Balacava to address current French Immersion accommodation pressures in Waterdown and Flamborough.

Flamborough Centre	2015	2016	2017	2018	2019	2020	2021	2022	2023	2024	2025
English	250	251	243	250	275	296	326	331	347	338	323
French						23	45	60	57	63	77
<b>Total</b>	250	251	243	250	275	319	371	391	405	402	400
<b>Utilization</b>	103%	103%	100%	103%	113%	131%	153%	161%	167%	165%	165%
<b>Utilization with Portables</b>	66%	66%	64%	66%	72%	84%	97%	103%	106%	106%	105%

Flamborough Centre has a 6 room portapak on site

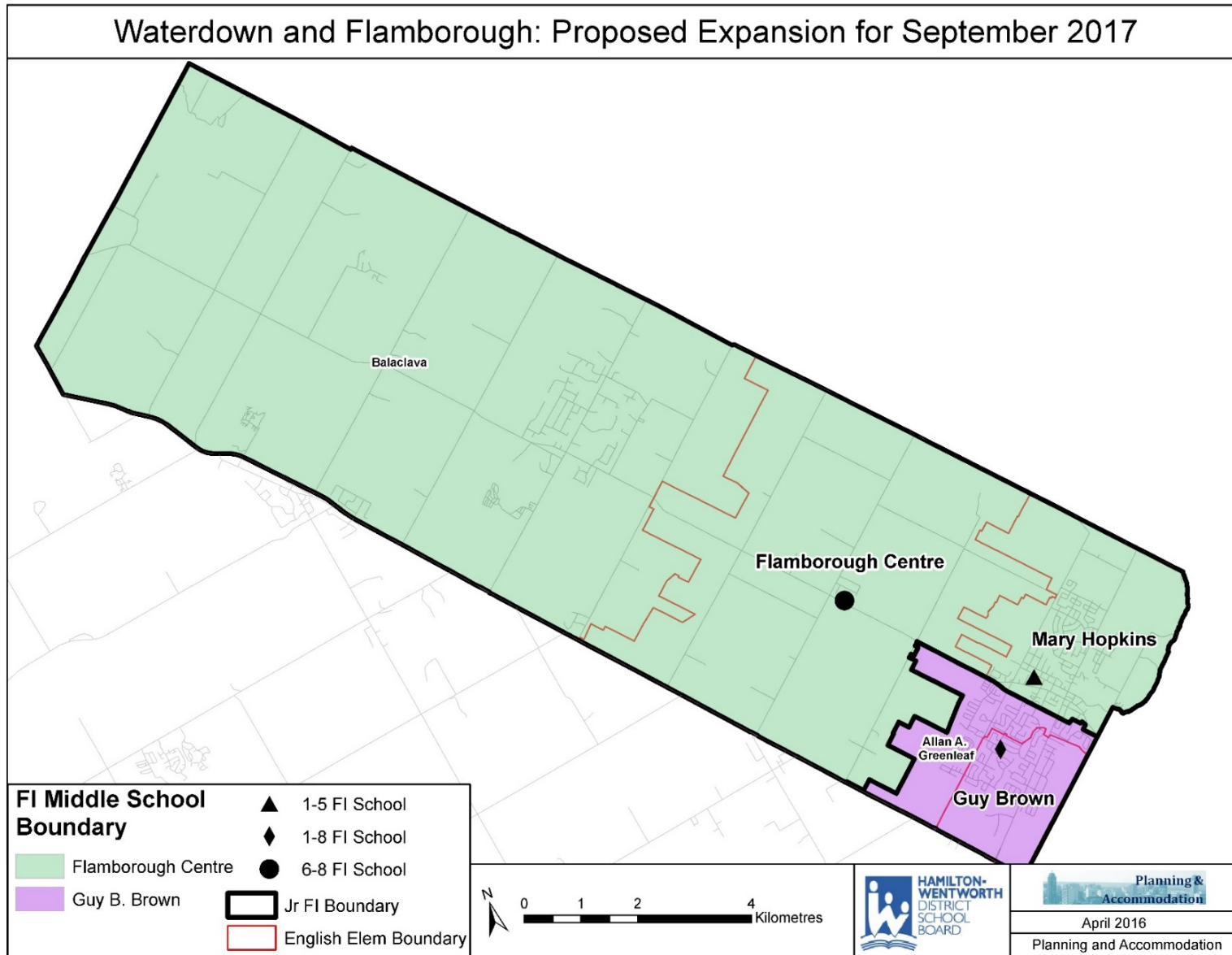
Guy Brown	2015	2016	2017	2018	2019	2020	2021	2022	2023	2024	2025
English	356	363	357	363	381	368	363	358	356	360	360
French	346	364	321	323	330	330	334	334	353	375	379
<b>Total</b>	702	728	679	686	711	699	697	693	710	735	739
<b>Utilization</b>	111%	115%	107%	109%	113%	111%	110%	110%	112%	116%	117%
<b>Utilization with Portables</b>	104%	107%	100%	101%	105%	103%	103%	102%	105%	108%	109%

Guy Brown has 2 portables on site

Mary Hopkins	2015	2016	2017	2018	2019	2020	2021	2022	2023	2024	2025
English	318	319	347	377	385	402	406	418	432	447	439
French			72	94	123	130	140	156	169	177	184
<b>Total</b>	318	319	419	472	508	531	546	574	601	624	623
<b>Utilization</b>	79%	79%	104%	118%	127%	133%	136%	143%	150%	156%	155%
<b>Utilization with Portables</b>	59%	59%	78%	88%	94%	99%	101%	106%	112%	116%	116%

Mary Hopkins has a 6 room portapak on site

Enrolment projections depict Mary Hopkins program implemented with grades 1-3.



Map 9: Waterdown FI Expansion

### **Ancaster, Mountain, Upper Stoney Creek, Glanbrook**

Ancaster is approved for a Pupil Accommodation Review. In the interim, it is suggested that the status quo remain in these areas. Currently FI is at Fessenden grades 1-6 and beginning in September, 2016, grades 7 and 8 FI will be at Ancaster Senior. There is room to accommodate grade 6 FI at Ancaster Senior should that be necessary until the AR is completed.

### **Mountain, Upper Stoney Creek, and Glanbrook**

These areas will be monitored as growth occurs. At present, there are no immediate accommodation or boundary concerns.

### **SYSTEM (Central) APPLICATION PROCESS FOR FRENCH IMMERSION PROGRAM**

The purpose of a system application process is to ensure that all students who wish to take French Immersion programming are able to do so. In addition, the Board is able to plan accommodation needs to prevent accommodation pressures within the system. It is recommended that a system-wide application process for grade 1 entry to French Immersion programs be established to allow for program placement of students, monitoring of accommodations, balance of enrolment, and long term stability of the French Immersion program. It is important that any new registration process for French Immersion be communicated to FIAC and parents in advance of any changes.

When a student is accessing French Immersion, placement is determined by availability of openings within schools providing the Program. The guarantee is to the FI program, not a school location. The placement committee strives to place students within their French Immersion boundary, based on the home address, but it is recognized that this is not always possible. When necessary, and wherever possible, the Board will open a second site in the same FI catchment area as the FI program that is at capacity.

The system application process for grade 1 students entering French Immersion would be advertised each year with specific dates attached to the applications. The schools that do not have accommodation pressures will have a notation on the application form that grade 1 students living within the FI catchment for these schools will be automatically accepted into the program. Parents will still need to complete the application form. For all other Grade 1 FI applications, program locations will be offered by the end of October.

- 1) Late September: Application Process opens
- 2) Mid-October: Application Deadline
- 3) Late October: Program Location offered to Parent/Guardian
- 4) Mid- November : Deadline for Program Acceptance and Registration

### **NOTE:**

1) Deadline dates for applying, notification of location of program offering, and deadline for registering at the program offering location will be provided on an annual basis.

2) Late Admission: Students in Grade 1-8 moving to HWDSB from another board may be offered a French Immersion program location for grades other than the grade 1 entry after a review of student records or confirmation of an equivalent background in French, as determined by Program staff from French as a Second Language, and space permitting. The Committee that reviews applications will also review late admissions to determine student placement.

### **REVIEW OF APPLICATIONS**

## **Committee to Review and Determine Program Offering Locations**

*(Grade 1 French Immersion)*

The Executive Superintendent –Leadership and Learning, a School Superintendent, the French as a Second Language Consultant, and a Planning and Accommodation representative will meet to determine Grade 1 placement for all French Immersion sites experiencing accommodation challenges. The committee will also review all late admission applications.

Should the demand illustrated by the application process exceed the maximum space at any given school, a placement will be offered at the named alternative location for the catchment area.

### **Criteria for Program Offerings**

It is recommended that the following criteria be used for Grade 1 FI program placement offerings

- Availability of the program closest to the student’s home address, based on the French Immersion boundary
- Grade 1 siblings entering French Immersion may attend the same school as their older sibling currently in FI, space permitting and providing they remain in FI.
- Balance of English and FI enrolment in dual track schools (50-60% in English or French)
- Year over year impact as pupils progress through grades 1-8

### **Acceptance of Program Placement Offering by Parent/Guardian**

Parents/guardians accept the program placement by registering at the school named in the program placement offering prior to the registration deadline date.

### **Class Size:**

Class size requirements are determined annually by the Ministry and are aligned with Class Size Legislation. French Immersion programs are subject to the Ministry requirements.

As in all schools, combined grades may be utilized.

### **Designated Pathways:**

Each elementary school offering French Immersion has a designated secondary school catchment area where students attend should they wish to continue French Immersion in secondary school.

### **Associated French Immersion Schools**

<b>Sherwood</b>	<b>Westdale</b>
-----------------	-----------------

Ancaster Senior (2017)	Dalewood
Ecole Elementaire Michaelle Jean	Guy Brown
Glen Brae	Sir William Osler
Lawfield	Ryerson
Norwood Park	

\*Future sites will be added based on approved FI boundaries and/or determination of alternate sites.

### Secondary Enrolment Projections

School	Eng	FI	OTG	Portables
<b>Sherwood</b>	9-12	9*	1,374	0
<b>Westdale</b>	9-12	9-12	1,461	0

Sherwood	2015	2016	2017	2018	2019	2020
<b>English</b>	965	992	910	911	899	862
<b>French</b>	49	105	168	230	258	321
<b>Total</b>	1,014	1,097	1,078	1,141	1,157	1,183
<b>Utilization</b>	74%	80%	78%	83%	84%	86%

Westdale	2015	2016	2017	2018	2019	2020
<b>English</b>	854	702	925	855	858	914
<b>French</b>	545	461	415	417	430	476
<b>Total</b>	1,399	1,163	1,340	1,272	1,288	1,390
<b>Utilization</b>	96%	80%	92%	87%	88%	95%

\*In September 2016, Sherwood will offer grades 9 and 10 and will continue to expand until 2018 when grade 9-12 are offered

### Monitoring Report

It is recommended that a monitoring report be provided to Trustees each fall with an update on French Immersion programs with specific reference to the number of applications received, enrolments, program locations, accommodation challenges, and trends.





## EXECUTIVE REPORT TO PROGRAM COMMITTEE

**TO:** PROGRAM COMMITTEE

**FROM:** Manny Figueiredo, Director of Education

**DATE:** Thursday, June 8<sup>th</sup>, 2016

**PREPARED BY:** Sharon Stephanian, Superintendent of Leadership and Learning  
Bill Torrens, System Principal, Leadership & Learning

**RE:** English as a Second Language/English Literacy Development (ESL/ELD) Update

Action                      Monitoring X

### Background:

HWDSB serves a diverse community of learners, 22% of whom speak a language other than English in their homes according to data from September 2015. Arabic, Urdu, Punjabi, Serbian/Bosnian/Croatian and Spanish are the five largest linguistic groups.

Regardless if they were born in Canada or arrived as immigrants or refugees, the Ministry of Education identifies these students as English Language Learners (ELLs) and has provided policy, resources and curriculum to support their acquisition of English, acculturation to Canadian society and academic success in all subject areas. As well, the Ministry provides funding to boards beyond the per pupil Grants for Student Need (GSN); please see below for more detail.

There are typically two distinct profiles of English Language Learners:

- Students from Grades 1-12 who need English as a Second Language (ESL) programming because they have age appropriate literacy in the first language and age appropriate schooling in their first language;
- Students from Grades 4 to 12 who need English Literacy Development (ELD) programming because they do not have age appropriate first language literacy and have limited prior school experience.

### Update on the Syrian Newcomers

Since January 4<sup>th</sup>, 2016, HWDSB has registered 424 Syrian Newcomers: 58 Secondary and 366 Elementary students at 40 different schools. Wesley Urban Ministries, a key community partner, settled 982 Syrian Newcomers since January 4<sup>th</sup> and expects another 573 newcomers from around the world to arrive in Hamilton for settlement by December 2016.

HWDSB continues to partner with Wesley Urban Ministries, the YMCA and Thrive to support settlement, acculturation and well-being needs of all newcomers, but the focus of the work since January 2016 has been on the Syrian Newcomers.

## Funding

The Ministry of Education provides a ESL/ELD Allocation to school boards based upon the number of students registered in an elementary or secondary school who entered Canada in the past four years and were born in a country other than Canada, Great Britain, Ireland, the United States, Australia and New Zealand. The allocation is \$3920 per pupil but a weighting factor based on the number of years in Canada is applied. As per the 2016-2017 Ministry Technical Paper, the weighting factors for the next academic year are:

Year	Start Date	End Date	Weighting Factor
1	September 1 <sup>st</sup> , 2015	October 31 <sup>st</sup> , 2016	1
2	September 1 <sup>st</sup> , 2014	August 31 <sup>st</sup> , 2015	.85
3	September 1 <sup>st</sup> , 2013	August 31 <sup>st</sup> , 2014	.5
4	September 1 <sup>st</sup> , 2012	August 31 <sup>st</sup> , 2013	.25

## ESL Budget 2015-2016

The table below outlines the funding and allocations related to ESL/ELD Programming in 2015-2016.

### English and a Second Language

	Elementary	Secondary	Total
<b>Revenue</b>			
2015/16 ESL revenue (not taking Syrian Newcomers into account)	\$ 3,490,715	\$ 1,169,076	\$ 4,659,791
Teacher Qualifications/Experience	\$ 438,700	\$ 217,500	\$ 656,200
<b>Total Revenue per Grants</b>	<b>\$ 3,929,415</b>	<b>\$ 1,386,576</b>	<b>\$ 5,315,991</b>

Expenditures	FTE	\$	FTE	\$	FTE	\$
Salary and Benefits						
Teachers	40.00	\$ 3,789,800	13.00	\$ 1,327,300	53.00	\$ 5,117,100
ESL Consultant	0.50	\$ 56,625	0.50	\$ 56,625	1.00	\$ 113,250
	41.17	\$ 3,882,069	14.18	\$ 1,420,101	55.35	\$ 5,230,350
Professional Development						\$ 30,000
Instructional Supplies (Assessment Office & ESL)						\$ 37,550
<b>Total Expenditures</b>		<b>\$ 3,882,069</b>		<b>\$ 1,420,101</b>		<b>\$ 5,297,900</b>

\$ 18,091

### Shared Costs

Assessment/Admissions support staff	0.67	\$ 35,644	0.68	\$ 36,176	1.35	\$ 71,820*
Assessment Centre Lease						\$ 179,000*

Contract Assessors	\$ 65,000*
Instructional Supplies (Assessment Office & ESL)	\$ 19,850*
<b>Total Shared Costs</b>	<b>\$ 335,670</b>

### ESL/ELD Budget 2016-2017

This summary includes 313 Elementary Syrian Newcomer and 50 Secondary Syrian Newcomers. This total of 363 newcomers is based on information filed with the Ministry as of March 31, 2016 data. In addition, this summary includes the 3 additional temporary ESL teachers to be hired for the elementary panel. This is all of the additional resources to be provided to date and will change as the need of students is assessed.

### English and a Second Language

	Elementary		Secondary		Total	
<b>Revenue</b>						
2016/17 Budget ESL revenue	\$	3,412,654	\$	1,285,682	\$	4,698,336
2016/17 Projected ESL due to Syrian newcomers	\$	1,226,960	\$	196,000	\$	1,422,960
Teacher Qualifications/Experience	\$	566,181	\$	251,428	\$	817,609
<b>Total Revenue per Grants</b>	<b>\$</b>	<b>5,205,795</b>	<b>\$</b>	<b>1,733,110</b>	<b>\$</b>	<b>6,938,905</b>
<b>Expenditures</b>	<b>FTE</b>	<b>\$</b>	<b>FTE</b>	<b>\$</b>	<b>FTE</b>	<b>\$</b>
Salary and Benefits						
Teachers	43.00	\$ 4,231,759	13.00	\$ 1,374,269	56.00	\$ 5,606,028
ESL Consultant	0.50	\$ 58,981	0.50	\$ 58,981	1.00	\$ 117,962
	44.17	\$ 4,326,830	14.18	\$ 1,469,878	58.35	\$ 5,723,990
Professional Development						\$ 30,000
Instructional Supplies (Assessment Office & ESL)						\$ 57,400
<b>Total Expenditures</b>		<b>\$ 4,326,830</b>		<b>\$ 1,469,878</b>		<b>\$ 5,811,390</b>
						\$ 1,127,515
<b>Shared Costs</b>						
Assessment/Admissions support staff	0.67	\$ 36,090	0.68	\$ 36,628	1.35	\$72,718*
Assessment Centre Lease						\$183,300*
Contract Assessors						\$65,000*
<b>Total Shared Costs</b>						<b>\$ 321,018</b>

\*Note: The Ministry of Education expects all school boards to have a “reception centre” for newcomer students. HWDSB adopted the Assessment Centre approach as a ‘one stop shop’ for families. This location supports multiple areas including:

- Admissions for newcomers
- Assessments for students arriving in Ontario
- Adult assessments
- International Education.

This location maintained a downtown presence for HWDSB.