

### **AGENDA: 12:00-3:00**

1. Call to Order
2. Approval of the Agenda
3. Average Class Size Report – Elementary
4. Secondary Enrolment Update
5. Pupil Accommodation Review Transition Update
6. Resolution into Committee of the Whole (Private Session) as per the Education Act, Section 207.2 (b) the disclosure of intimate, personal or financial information in respect of a member of the board or committee
7. Adjournment



## EXECUTIVE REPORT TO FINANCE AND FACILITIES COMMITTEE

**TO:** Finance and Facilities Committee

**FROM:** Manny Figueredo, Director of Education

**DATE:** November 14, 2018

**PREPARED BY:** Stacey Zucker, Associate Director, Support Services  
Denise Dawson, Senior Manager, Business Services

**RE:** 2018-2019 Average Class Size Report – Elementary

**Action                      Monitoring x**

**Rationale/Benefits:**

Key Statistics HWDSB:

	Ministry Requirement	2018/19 Actual	2017/18	2016/17	2015/16
% of Primary Classes 20 and under	≥ 90%	90.2%	90.3%	90.1%	90.1%
% of Primary Classes 23 and under	100%	100%	100%	100%	100%
Average Primary Class Size	See above	19.33	19.49	19.49	19.33
Average Full Day Kindergarten Class Size	≤ 26.0	25.1	25.6	25.8	25.6
Percent of Full Day Kindergarten classes between 30 and 32 (2017-18 between 31 and 32)	< 10%	5.7%	1.8%	NA	NA
Average Jr/Int. (gr 4-8) Class Size	2018/19 ≤ 24.50 2017/18 ≤ 24.75 Prior Yrs. ≤ 25.1	24.48	24.74	25.1	25.1

Hamilton-Wentworth District School Board is in compliance with all Ministry elementary average class size requirements in 2018-19. The Class Size report filed with the Ministry indicates that 90.2% of HWDSB primary classes have 20 or fewer students; 100% of primary classes have 23 or fewer students, full day kindergarten average class size is 25.1 and average junior/intermediate (grade 4-8) class size is 24.48.

For 2018-19, the Ministry made a commitment to invest in reducing large class sizes in Full Day Kindergarten and Grades 4-8. The revised regulations continue to require an average FDK class size of 26 or fewer students, but now also require at least 90% of FDK classes to have 29 or fewer students. Up to 10% of FDK classes can reach 32 students if they meet one of the following exceptions: a) if purpose-built accommodation is not available; b) if a program will be negatively affected; c) where compliance will increase FDK/Grade 1 combined classes. For 2018-19, HWDSB had 5.7% or 16 classes between 30 and 32 students.

For Grade 4-8, the Ministry has committed funding to reduce class size to 22.85 over the next 5 years for boards which currently have class sizes of 24.5 or less. Any board with a regulated class size greater than 24.5 will be required to reduce class size to the extent that can be supported by the additional funding. For HWDSB, the revised regulated class size for 2018-19 for Grades 4-8 was 24.50 for which we are compliant at 24.48 as at the reorganization date.

Appendix A and B is attached to show the results reported to the Ministry. Appendix C is attached to show average class size by division and school.

Board Summary & Attestation

Section A: Board Information	
Board Name:	Hamilton-Wentworth District School Board
Board Number:	866141
Contact Name:	Denise Dawson
Contact Email:	ddawson@hwdsb.on.ca
Board Count Date (dd/mm/yyyy):	Select from drop down menu
	14/09/2018

Section B: Status of Class Size Compliance (for information purposes only)			
	Board Submission Statistic	Regulation Requirement	Compliance Status
Number of Primary Classes over 23	-	Not greater than 0	Achieved
Number of Primary/Junior-Int Combined Classes over 23	-	Not greater than 0	Achieved
Average Junior/Intermediate (grades 4-8) Class Size	24.48	Less than or equal to 24.50	Achieved
Percentage of Primary Classes 20 and under	90.2%	Greater than or equal to 90.0%	Achieved
Average FDK Class Size	25.1	Less than or equal to 26.0	Achieved
Number of FDK Classes (Pure) Over 32	-	Not greater than 0	Achieved
Percentage of FDK Classes (Pure) Between 30 and 32	5.7%	Less than or equal to 10.0% & valid FDK conditions	Achieved

Section C: Attestation

<p>By selecting "Yes" the board confirms that the Director of Education has reviewed the elementary class size data contained in this form and attests that:</p> <ul style="list-style-type: none"><li>The data contained in this report has been developed in accordance with the Ontario Class Size Regulation (O. Reg. 132/12); and</li><li>The data contained in this report is representative and accurate as at the count date selected by the board (Line 8 of this sheet, above).</li></ul> <p>This form, once completed, must be submitted to the Ministry of Education at CSReporting@ontario.ca by October 31, 2018. The Director of Education must be copied on this email.</p>	<div>Yes</div>
---------------------------------------------------------------------------------------------------------------------------------------------------------------------------------------------------------------------------------------------------------------------------------------------------------------------------------------------------------------------------------------------------------------------------------------------------------------------------------------------------------------------------------------------------------------------------------------------------------------------------------------------------------------------------------------------	----------------

Section D: Comments

--



## Board Statistics

(This section is for information purposes only and does not require user input.

Statistics will populate automatically when data is entered in "3. Class Size Data".

Please ensure your Excel calculation mode is set to automatic - see instructions Guide for details)

Board Name

Hamilton-Wentworth District School Board

Board Number

B66141

Number of Reporting Errors in DATA 0

### Key Statistics

Percentage Primary Classes 20 and Under	90.2%
Number of Primary Classes Over 23	-
Average Junior/Intermediate (grades 4-8) Class Size	24.48
Number of Primary/Junior Combined Classes Over 23	-
Average FDK Class Size	25.1
Number of FDK Classes (Pure) At or Below 29	264
Number of FDK Classes (Pure) Between 30 and 32	16
Number of FDK Classes (Pure) Above 32	-
Percentage FDK Classes (Pure) Between 30 and 32	5.7%

### General Statistics

TOTAL Number of Classes Reported	1,606
TOTAL Number of Schools Reported	87
TOTAL Enrolment of All Classes Reported	35926

### Information on FDK Classes

Number of FDK Classes (Pro-rated)	280.00
FDK Enrolment	7,040

### Information on Primary Classes

#### Percentage of Primary Classes

20 and under	90.2%
21	6.0%
22	2.4%
23	1.4%
24	0.0%
25 and more	0.0%

#### Number of Primary Classes

20 and under	449
21	30
22	12
23	7
24	-
25 and more	-
Total Number of Primary Classes	498

### Information on Junior/Intermediate (grades 4-8) Classes

Number of Junior/Intermediate Classes	767
Junior/Intermediate Enrolment	18,777

### Information on Self-Contained Special Education Classes

Number of Self-Contained Special Education Classes	61
Self-Contained Special Education Enrolment	483

**Hamilton-Wentworth District School Board  
Summary of Average Class Size per School  
As of September 14, 2018**

<b>School Name</b>	<b>Average Grade FDK Class Size</b>	<b>Average Grade 1-3 Class Size</b>	<b>Average Grade 4-8 Class Size</b>	<b>Average Special Ed Class Size</b>
<b>High Priority Schools:</b>				
Adelaide Hoodless	26.20	20.00	23.00	
Bennetto	23.25	17.60	22.10	7.00
Cathy Weaver	21.00	19.50	22.64	12.00
Central	22.80	18.40	21.80	
Dr Davey	24.40	19.89	22.45	
Elizabeth Bagshaw	28.67	19.00	24.44	11.00
Hess Street	21.67	19.25	21.00	11.00
Hillcrest	25.50	17.88	21.83	9.66
Lake Avenue	25.60	19.63	24.40	
Memorial - Hamilton	23.75	20.40	23.90	5.50
Parkdale	27.00	16.25	18.67	
Pauline Johnson	24.25	20.40	26.50	4.00
Prince of Wales	21.67	18.60	23.27	
Queen Mary	24.40	17.38	23.29	6.00
Queen Victoria	27.20	18.89	21.82	7.66
Sir Isaac Brock	22.00	19.25	24.67	
Sir Wilfrid Laurier	21.00	18.33	24.56	8.00
Viscount Montgomery	20.00	17.25	23.45	3.00
W H Ballard	22.50	20.29	23.79	9.50
Westwood	21.00	20.00	23.75	5.00
<b>High Priority School Average</b>	<b>23.63</b>	<b>18.90</b>	<b>23.16</b>	<b>8.09</b>
A.M. Cunningham	30.00	19.44	22.67	
Allan A Greenleaf	30.00	20.88	24.00	5.00
Ancaster Meadow	27.75	20.29	26.08	
Ancaster Sr Public			26.46	4.00
Balaclava	26.00	19.25	26.63	
Bellmoore	28.00	19.53	25.75	6.00
Beverley Central	24.50	19.33	23.67	8.00
Billy Green	25.00	19.86	27.00	9.50
Buchanan Park	28.00	17.00	27.33	9.00
C. B. Stirling	26.00	17.50	23.71	
C. H. Bray	24.33	20.50	24.67	
Chedoke	21.33	19.00	25.36	12.00
Collegiate Avenue	21.33	19.00	24.33	
Cootes Paradise	25.43	19.31	23.04	
Dalewood			26.89	12.00
Dr. John Seaton	21.00	19.50	24.17	
Dundana	24.00	19.00	21.83	
Dundas Central	29.00	21.25	24.40	
Earl Kitchener	28.80	18.67	22.25	
Fessenden	28.33	19.45	24.78	
Flamborough Centre	18.00	14.50	23.63	
Franklin Road	29.00	18.38	26.44	
G. L. Armstrong	28.25	19.00	22.55	10.00

Gatestone	23.25	19.00	26.08	11.00
Glen Brae			26.15	
Glen Echo	21.00	19.63	22.40	
Glenwood Special Day School				4.44
Gordon Price	24.33	20.20	27.00	
Green Acres	17.00	20.00	24.60	11.00
Guy Brown	27.50	20.22	24.38	
Helen Detwiler	24.00	19.71	23.82	
Highview	30.00	19.14	26.10	
Holbrook	22.33	19.00	25.33	9.00
Huntington Park	27.75	20.00	25.60	6.00
James MacDonald	28.33	18.40	25.00	
Janet Lee	23.50	19.67	24.60	
Lawfield	31.33	19.70	24.80	
Lincoln M Alexander	26.00	17.75	22.75	8.00
Lisgar	21.67	19.25	25.57	6.00
Mary Hopkins	25.20	20.67	23.00	
Memorial - Stoney Creek	20.67	20.80	25.00	
Michaelle Jean		19.40	24.71	
Millgrove	28.50	20.67	22.67	
Mount Albion	26.50	19.50	25.38	7.00
Mount Hope	26.00	20.00	24.75	
Mountain View	28.00	19.38	26.73	
Mountview	27.00	19.75	22.00	
Norwood Park		20.56	24.57	
Queens Rangers	19.00	19.00	27.00	
Queensdale	30.67	19.40	25.86	8.00
R A Riddell	26.75	20.10	25.53	
R L Hyslop	31.00	15.00	26.00	
Ray Lewis	23.75	19.75	26.64	
Richard Beasley	22.33	19.33	20.00	
Ridgemount	22.25	18.43	24.33	
Rosedale	28.67	18.20	24.00	
Rousseau	24.33	20.00	21.80	12.00
Ryerson			25.81	8.00
Sir William Osler	23.75	19.20	25.13	
Spencer Valley	25.50	19.33	24.10	9.00
Strathcona	24.67	19.00	22.73	
Tapleytown	24.00	20.00	20.80	
Templemead	29.00	20.00	24.58	11.00
Tiffany Hills	22.25	19.33	26.25	10.00
Westview			26.63	9.50
Winona	24.83	20.08	25.68	
Yorkview	28.50	19.33	24.00	
<b>Non-High Priority Average</b>	<b>25.79</b>	<b>19.48</b>	<b>24.91</b>	<b>7.82</b>
<b>Total Board Average Class Size</b>	<b>25.14</b>	<b>19.33</b>	<b>24.48</b>	<b>7.91</b>

## EXECUTIVE REPORT TO FINANCE AND FACILITIES COMMITTEE

**TO:** Finance and Facilities Committee

**FROM:** Manny Figueiredo, Director of Education

**DATE:** November 14, 2018

**PREPARED BY:** Stacey Zucker, Associate Director, Support Services and Treasurer  
Denise Dawson, Senior Manager, Business Services

**RE:** Secondary Enrolment Update

---

Action ☐

Monitoring ☒

### Background:

Enrolment plays a very key role in the operations of a school board. The Average Daily Enrolment (ADE) is the basis for the Grant for Student Needs (GSN) which is 97.5% of a school boards funding. The ADE is calculated by taking the average of the full-time equivalent (FTE) on October 31<sup>st</sup> and March 31<sup>st</sup>.

Each year, enrolment is projected to determine the budgeted revenue for the following year. On October 31<sup>st</sup>, Board staff calculates the actual FTE enrolment and compares it to the projections.

### Staff Observations:

Board staff is reviewing each school with Principals and Superintendents of Student Achievement (SOSAs) to determine the reasons for the changes in enrolment versus projections. As numbers are still coming in and being reviewed, a verbal update will be provided at the meeting.

The projected enrolment will be used in the Revised Estimates that are due to the Ministry and secondary staffing will be adjusted accordingly in second semester in necessary.





## EXECUTIVE REPORT TO FINANCE AND FACILITIES COMMITTEE

**TO:** Finance and Facilities Committee

**FROM:** Manny Figueiredo, Director of Education

**DATE:** November 14, 2018

**PREPARED BY:** Stacey Zucker, Associate Director, Support Services  
David Anderson, Senior Manager, Facilities Management

**RE:** Pupil Accommodation Review Transition Update

---

Action ☐

Monitoring ☒

### Background:

HWDSB has gone through a number of Pupil Accommodation Reviews (PARs) in the last number of years. All of the approved motions related to the PAR decisions are included in Appendix A. As a result of these PAR decisions, the Board has applied for and received funding for a number of projects:

- Bernie Custis Secondary School
- Nora F. Henderson Secondary School
- New Elementary School on Eastdale site
- New Elementary School on Memorial (Stoney Creek) site
- New Elementary School on Glen campus site
- New Elementary School on Beverly Community Centre site
- New Elementary School on Greenville site
- New Elementary School on CH Bray site
- Addition on Collegiate Elementary School
- Addition on Ancaster Senior Public School
- FDK Classroom Addition at Sir Wilfrid Laurier

In addition, as growth continues in certain areas of the City, the Board has received funding for:

- New elementary school on the Summit Park site; and
- Addition on Mount Albion Elementary School

In order to complete all of these projects and implement the decisions related to the PAR, there are a number of transitions required which requires a great deal of planning. This report is intended to be a comprehensive update on transitions related to all new school openings and consolidations as a result of the funding the Board has received.

## **Staff Observations:**

Once a project has been funded by the Ministry, planning begins for the construction. The project must be designed, receive any regulatory approvals and permits, and be tendered within budget. This entire process can take upwards of eighteen months.

If the new project is a result of a consolidation, planning is also required for school closures, possible boundary reviews, naming of new schools and transition planning. If the new project is a result of growth, boundary reviews, naming of schools and transition planning may be required.

When an area goes through a pupil accommodation review, there are often a number of new schools that are approved as part of the recommendation to eliminate excess pupil spaces and reduce school renewal needs. When there are multiple new schools requested in one review area, the Ministry often does not approve all of the schools at the same time. This creates challenges for the Board as it begins its consolidation process. Another challenge is created when a school is being rebuilt on the site of an existing school. In most cases, the schools must be closed and students temporarily moved while the construction is in process.

One of the most important considerations when planning the consolidation process is to minimize transitions for students. The Board does acknowledge however that short term relocations are sometimes necessary and will work with the communities to ensure the transitions are as seamless as possible. The creation of Transition Committees is an integral process in the opening and closing of HWDSB schools. It gives the community an opportunity to voice their collective thoughts, consideration of all the diverse views of the community and students. The meeting dates, presentations and minutes are posted on the Boards website at [Transition Committees](#).

The Board does also acknowledge that sometimes there are setbacks to timelines that are out of the Board's control. If there are delays in approvals or if projects come in over budget, timelines are negatively affected. Board staff does try to be proactive and is working with our municipal partners to prioritize project approvals to minimize delays related to approvals and is doing its best to ensure that projects design fall within the benchmarks funding provided by the Ministry.

All 13 projects mentioned above are in various stages of planning, design and/or construction. This report will highlight the stage that the projects are in and the transition plan for these projects.

## ***Secondary PAR***

### Bernie Custis Secondary School

Construction Status: In process to be completed for September 2019

School Consolidation: Yes. See Appendix B for map related to feeder elementary schools.

School Closures: Delta Secondary School – June 2019  
Sir John A. MacDonald Secondary School – June 2019

New Naming: Already completed

Transition Committee: In process. Future meeting dates can be found on the Board website.

#### Nora F. Henderson Secondary School

Construction Status: In process with expected completion September 2020

School Consolidation: Yes. The closure of Barton and Hill Park created this school and it is temporarily located at the closed Barton school until the new school is constructed.

School Closures: Barton – June 2014  
Hill Park – June 2014

New Naming: Already completed

Transition Committee: The transition work has already been completed for the consolidation. However, there will be transition meetings held to plan the move to the new building.

#### ***West Flamborough PAR (See Appendix C for West Flamborough Transition Map)***

#### New School on Beverly Community Centre site

Construction Status: In process with expected completion in 2019-20

School Consolidation: Yes. Beverly Central, Dr. John Seaton and Queen's Rangers will close in June 2019. The new school on the Beverly Community Centre site will be named and the students will temporarily attend the closed Beverly Central and Seaton (2 campuses of the new school) until the construction of the new school is complete. The Queen's Rangers students that are to attend the new school (Zone 3) will temporarily attend Seaton while the school is being constructed. Once the school is constructed, Zones 1-3 will move to the new school. The new school will also have a community space for potential community partners.

School Closures: Beverly Central – June 2019  
Dr. John Seaton – June 2019  
Queen's Rangers – June 2019

New Naming: 2018-19. In accordance with "Naming of Schools" policy.

Transition Committee: To be established in 2018-19.

#### New School on Greensville site

Construction Status: Out for Tender

School Consolidation: Yes. This school is the consolidation of Greensville and Spencer Valley. Since the new school is to be constructed on the Greensville site, Greensville was closed in June 2017 in order to demolish the existing building and allow for construction. The Greensville students moved to Spencer Valley until construction is complete. Once the new school is constructed, Spencer Valley will be closed and all the students will move to the new school

of the Greenville site. The site is also a community hub with a partnership with the Hamilton Public Library and the City of Hamilton.

School Closures: Greenville – June 2017  
Spencer Valley – upon completion of new school

New Naming: 2019-20. In accordance with “Naming of Schools” policy.

Transition Committee: The transition work has already been completed for the consolidation. However, there will be transition meetings held to plan the move to the new building.

***Lower Stoney Creek PAR (See Appendix D for Lower Stoney Creek Transition Map)***

**New School on the Eastdale site**

Construction Status: In process with expected completion in 2019-20

School Consolidation: Yes. This school is the consolidation of Eastdale (Zone 1), some students from Mountain View (Zone 3) and some students from Collegiate (Zone 2). Since the new school is to be constructed on the Eastdale site, Eastdale was closed in June 2018 in order to demolish the existing building and allow for construction. The Eastdale students moved to Mountain View until construction is complete. Collegiate will close in June 2019 to allow for the construction to take place at that site. The students in Zone 2 will temporarily attend Green Acres until the new school on Eastdale is complete. Once the new school is constructed, the students from Zones 1, 2 and 3 will move to this school.

School Closures: Eastdale – June 2018  
Mountain View – to close once new school on Memorial (Stoney Creek) is complete  
Collegiate – June 2019

New Naming: 2018-19. In accordance with “Naming of Schools” policy.

Transition Committee: Transition Committee was established for Eastdale’s move to Mountain View. Additional Transition work will commence in 2018-19.

**New School on the Memorial (Stoney Creek) site**

Construction Status: Awaiting Site Plan Approval. The next step will be a Request for Tenders. If the tender is within budget, construction will commence shortly thereafter and construction will take 12-16 months.

School Consolidation: Yes. This school is the consolidation of Memorial (Stoney Creek) (Zone 5) and some students from Mountain View (Zone 4). The new school will be constructed on a different part of the Memorial (Stoney Creek) site so it can stay open during the construction phase. Once the new school is constructed, the students from Zone 4 will move to this school and Mountain View will close.

School Closures: Memorial (Stoney Creek) – upon completion of new school  
Mountain View – upon completion of new school

New Naming: 2019-20. In accordance with “Naming of Schools” policy.

Transition Committee: Transition Committee will be established in 2019-20.

#### Addition/Renewal Work at Collegiate

Construction Status: Awaiting Site Plan Approval. The next step will be a Request for Tenders. If the tender is within budget, construction will commence shortly thereafter and construction will take approximately 12 months.

School Consolidation: Yes. This school is the consolidation of Green Acres (Zone 7), R.L. Hyslop (Zone 8) and some students from Collegiate (Zone 6). The addition and renewal work will require the closure of Collegiate while the work is being completed. Therefore, Collegiate will close in June 2019. The students in Zone 2 will temporarily attend Green Acres and the students in Zone 6 will temporarily attend R.L. Hyslop. Once the new school on the Eastdale site is complete, the students in Zone 2 will move to the new school. Once the construction is complete at the new school on the Collegiate site, Green Acres and R.L. Hyslop will close and the students (Zones 6, 7 and 8) will move to the new school.

School Closures: Collegiate – June 2019  
Green Acres – when construction at the Collegiate site is complete  
R.L. Hyslop – when construction at the Collegiate site is complete

New Naming: 2019-20. In accordance with “Naming of Schools” policy.

Transition Committee: Transition Committees will be established in 2018-19 to support the temporary accommodations.

Transition Committee will be established in 2019-20 to support the permanent move.

#### ***Ancaster PAR (See Appendix E for Ancaster 2019-20 Transition Map)***

##### Addition to Ancaster Senior

Construction Status: Awaiting Site Plan Approval. The next step will be a Request for Tenders. This project must be completed by September 2019 as the addition is required as part of the transition planning for all Ancaster consolidations.

School Consolidation: Yes. This school will eventually be a K-8 school for all the students in the Fessenden catchment (Zone 5). In the short term, Ancaster Senior and Fessenden will close in June 2019. The addition will be constructed and the new K-8 school will be named. This new school will continue to operate in 2 buildings under its new name. Since the Board has not yet received funding for Rousseau, the Grades 7-8 students in the Rousseau catchment (Zone 6) will continue to attend the new school and the new school will also remain as the



only French Immersion school in Ancaster. In addition, while CH Bray is being constructed, the new CH Bray Grades 7-8 students (Zones 3 and 4) will also attend this school.

School Closures: Ancaster Senior – June 2019  
Fessenden – June 2019

New Naming: 2018-19. In accordance with “Naming of Schools” policy.

Transition Committee: Transition Committee will be established in 2018-19 to support the temporary accommodations.

#### New School on the CH Bray site

Construction Status: Awaiting Site Plan Approval. The next step will be a Request for Tenders. If the tender is within budget, construction will commence shortly thereafter and construction will take 12-16 months.

School Consolidation: Yes. This school is the consolidation of CH Bray (Zone 4) and some students from Queen’s Rangers (Zone 3). Since the new school is to be constructed on the CH Bray site, CH Bray will close in June 2019 in order to demolish the existing building and allow for construction. Queen’s Rangers will be the holding school for CH Bray during the construction period. K-6 students from Zones 3 and 4 will attend this holding school. Grades 7 and 8 students from Zones 3 and 4 will continue to attend the school at the Ancaster Senior site during the construction period. Once the new school is complete, it will become a K-8 school for Zones 3 and 4.

School Closures: CH Bray – June 2019  
Queen’s Rangers – June 2019

New Naming: 2018-19. In accordance with “Naming of Schools” policy.

Transition Committee: Transition Committee will be established in 2018-19

#### ***East Hamilton City PAR (See Appendix F for East Hamilton Transition Map)***

#### New School on Glendale Campus

Construction Status: Awaiting Site Plan Approval. The next step will be a Request for Tenders. If the tender is within budget, construction will commence shortly thereafter and construction will take 12-16 months.

School Consolidation: Yes. This school is the consolidation of Glen Brae and Glen Echo (Zone 1), Sir Isaac Brock (Zone 2), some students from Sir Wilfrid Laurier (Zone 3) and some students from Elizabeth Bagshaw (Zone 4). Since the school can be built on the existing property without impacting the existing schools, the schools will remain open during the construction period. Once the new school is constructed, Glen Brae, Glen Echo, Sir Isaacs Brock and Elizabeth Bagshaw will close and the students in Zones 1-4 will move to the new school.

School Closures: Glen Brae – upon completion of the new school  
Glen Echo – upon completion of the new school  
Sir Isaac Brock – upon completion of the new school  
Elizabeth Bagshaw – upon completion of the new school

New Naming: 2019-20. In accordance with “Naming of Schools” policy.

Transition Committee: Transition Committee will be established in 2019-20

#### Addition at Sir Wilfrid Laurier

Construction Status: The room addition at Sir Wilfrid Laurier will be complete in 2018-19.

School Consolidation: Yes. This school is the consolidation of some students from Sir Wilfrid Laurier (Zone 6) and some students from Elizabeth Bagshaw (Zone 5). Even though the construction will be complete at Laurier in 2018-19, the consolidation will not take place until the completion of the new school on the Glendale campus as all students cannot be accommodated at Laurier until the students in Zone 3 move to the new school on the Glendale campus. Once the new school on the Glendale campus is complete, Elizabeth Bagshaw will close and students in Zone 5 will move to Laurier.

School Closures: Elizabeth Bagshaw – upon completion of the new school at the Glendale campus

New Naming: 2019-20. In accordance with “Naming of Schools” policy.

Transition Committee: Transition Committee will be established in 2019-20

#### ***Growth Related Construction***

##### New School on Summit Park site

Construction Status: In process to be completed for September 2019

School Consolidation: No. This school is being constructed as a result of growth in Upper Stoney Creek. The recommended Boundary was approved by the Board on May 28, 2018 (See Appendix G).

In addition, this school will be assisting with the accommodation pressures at Bellmoore. Grades 7-8 students from Bellmoore will be attending this new school until a permanent solution is provided for Binbrook.

School Closures: N/A

New Naming: 2018-19. In accordance with “Naming of Schools” policy.

Transition Committee: Transition Committee will be established in 2018-19

### Addition at Mount Albion

Construction Status: Awaiting Site Plan Approval. The next step will be a Request for Tenders. If the tender is within budget, construction will commence shortly thereafter and construction will take approximately 12 months.

School Consolidation: No. This addition is being constructed as a result of growth in Upper Stoney Creek and the accommodation pressures at Mount Albion.

School Closures: N/A

New Naming: N/A

Transition Committee: N/A

### **Conclusion:**

This report is intended to be an update on all transitions happening at HWDSB related to the capital projects that the Board has received funding for. Appendix H presents a summary of all 13 projects and their status. Appendix I is a summary of all the closures, school namings and transition committees that will be happening in 2018-19. Board staff will continue to update trustees as to the status of these projects and recognizes the importance of communicating with the school communities that are affected.

*Motions Related to PAR Decisions*

ANCASTER: May 29, 2017

**RESOLUTION #17-96:** Trustee Johnstone, seconded by Trustee Beattie, moved: **That the following recommendations for the Ancaster Accommodation Review be approved:**

- A. That CH Bray, Fessenden, Queen's Rangers and Rousseau be closed pending the related Ministry of Education funding for two new JK-8 elementary schools on the CH Bray and Rousseau sites and to convert Ancaster Senior to a JK-8 facility. New English boundaries identified in Map #1 titled - Ancaster Final Recommendation.
- B. That a new French Immersion program (grade 1-8) be created at Rousseau upon the completion of the Rousseau replacement school and that a boundary review be conducted.
- C. That a boundary review be undertaken between CH Bray replacement school (CH Bray and Queen's Rangers), New School on Beverly Community Centre site (Beverly Central and Dr. John Seaton), New School on the Greensville site (Greensville, Spencer Valley), and Sir William Osler to be completed in June 2017. Boundary identified in Map #3 titled – Proposed Boundary Review. Boundary identified in Map #3 titled – Proposed Boundary Review.
- D. That HWDSB communicate with the City of Hamilton and all preferred agents identified in Ontario Regulation 444/98 in a timely and transparent manner to maximize the reuse of school property for community benefit.

WEST HAMILTON CITY: June 5, 2017

**RESOLUTION #17-105:** Trustee Bingham, seconded by Trustee Beattie, moved: **That the following recommendations for the West Hamilton City Pupil Accommodation Review be approved:**

- A. That Hess and Strathcona close pending Ministry of Education funding for HWDSB's portion of the Community Hub project. New school boundaries identified in map titled Map #1 - Revised.
- B. That HWDSB seek partnerships to redevelop the Sir John A. Macdonald site as a Community Hub centred around a new JK-8 elementary school.
- C. That a Community Hub proposal be presented to the Board of Trustees for approval no later than December 2017.
- D. That all schools remain open failing the creation of a Community Hub on the SJAM site.
- E. That Bennetto introduce a French Immersion program (grade 1-8) in September 2018, commencing with grades 1-3. New French Immersion boundaries identified in map titled Map #1- Revised.
- F. That HWDSB communicate with the City of Hamilton and all preferred agents identified in Ontario Regulation 444/98 in a timely and transparent manner to maximize the reuse of school property for community benefit.

EAST HAMILTON CITY 2 AND LOWER STONEY CREEK: June 6, 2016

**RESOLUTION #16-93:** Trustee Beattie, seconded by Trustee Johnstone, moved: **That the following Recommended Action be approved:**

- A. That the following recommendation for the East Hamilton City 2 Accommodation Review be approved:
  - That Elizabeth Bagshaw, Glen Brae, Glen Echo and Sir Isaac Brock be closed pending Ministry of Education funding for a new JK-8 elementary school on the Glendale Campus and that boundaries between the New Glendale Campus School and Sir Wilfrid Laurier be modified as per map #1.
- B. That the following recommendation for the Lower Stoney Creek Accommodation Review be approved:
  - That Collegiate Avenue, Eastdale, Green Acres, Memorial (SC), Mountain View and R.L. Hyslop be closed pending Ministry of Education funding for three new JK-8 elementary schools on the Collegiate, Eastdale and Memorial (SC) sites and that boundaries between the three new schools be modified as per map #2.

That the following recommendations for *both East Hamilton City 2 and Lower Stoney Creek* Accommodation Reviews be approved:

- C. That a boundary review be undertaken between Lake Avenue and Green Acres upon Ministry of Education approval of the business cases submitted for both accommodation review areas.
- D. That the French Immersion program at Glen Echo (grades 1-5) and Glen Brae (grades 6-8) be relocated and that staff balance the enrolment between a new program to be located in East Hamilton upon consultation with stakeholders and a new program to be located in Lower Stoney Creek.
- E. That staff be directed to provide an update report based on the Ministry's response to the funding requests for both East Hamilton City 2 and Lower Stoney Creek accommodation reviews.
- F. That staff be directed to explore any potential growth related needs due to new residential development.



WEST FLAMBOROUGH: June 16, 2014

**RESOLUTION #14-85:** That the following report of the Standing Committee - May 26, 2014 be approved, including:

**West Flamborough ARC Recommendation Part 1: Revised**

- i. The closure of Beverly Central and Dr. Seaton in June 2016
- ii. Build a new 350 pupil place JK to 8 school at the City owned Beverly Community Centre (upon partnership agreement with the City of Hamilton)
- iii. In the absence of a partnership agreement with the City of Hamilton at the Beverly Community Centre site, build a new 350 pupil place school on the existing Board owned Beverly Central school site
- iv. Proposed new school partnership is pending Ministry funding
- v. Proposed new school without partnership is pending Board funding

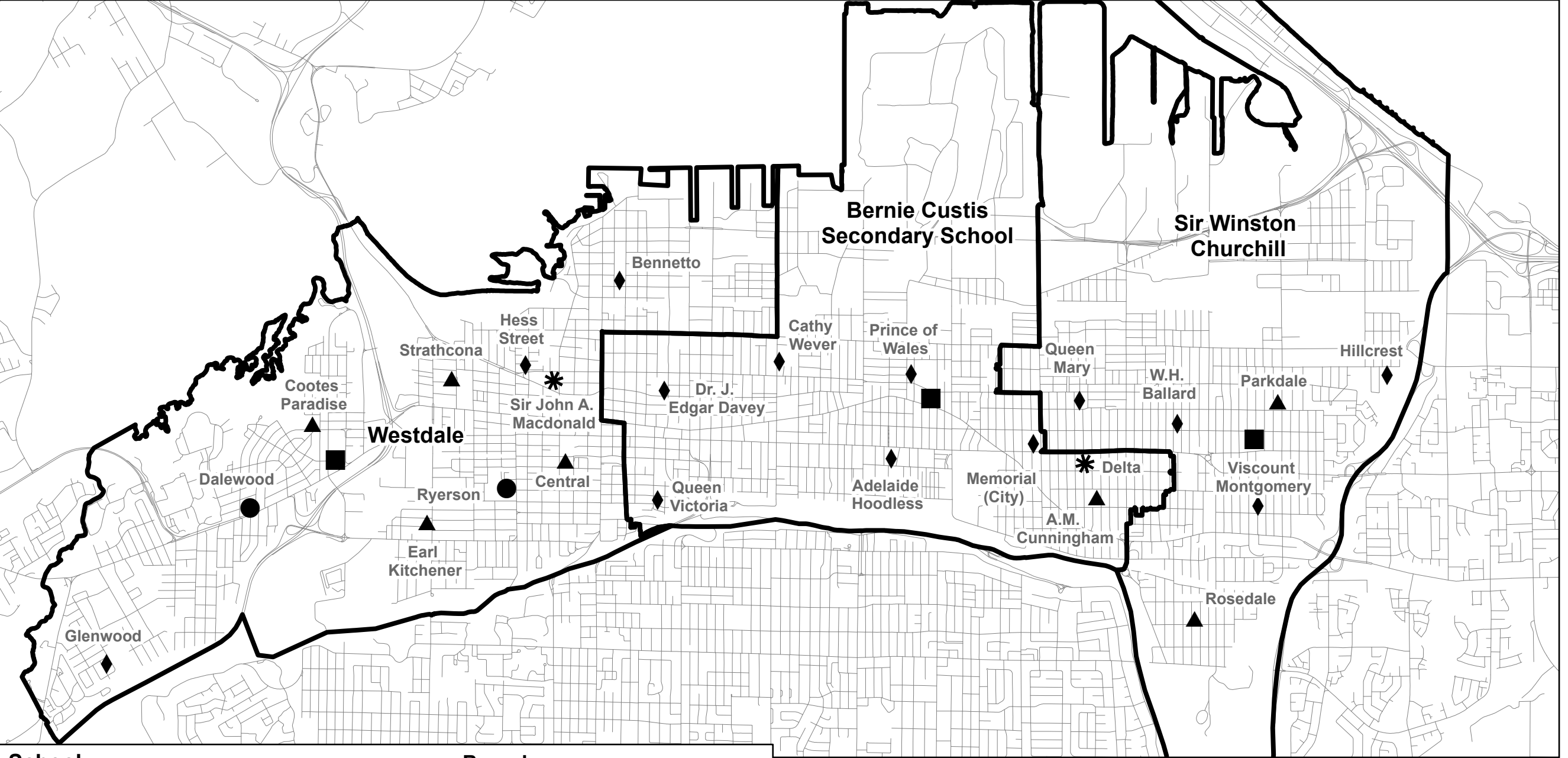
**Amendment added:**

- vi. The school closures outlined in clause i above, are subject to the new school referenced in clauses ii or iii being built

**West Flamborough ARC Recommendation Part 2: Revised**

- i. The closure of Greensville and Spencer Valley in June 2016
- ii. Build a new 350 pupil place JK to 8 school on the Greensville School site (upon partnership agreement with the City of Hamilton)
- iii. Millgrove school remains status quo and remains as a feeder school for grades 6 to 8 at the new school on the Greensville site.
- iv. Proposed new school partnership is pending Ministry funding
- v. In the absence of a partnership agreement with the City of Hamilton at the Board owned Greensville school site and Ministry new school funding, close Greensville school and renovate Spencer Valley School to accommodate the consolidated JK to 8 school; Millgrove school remains status quo JK to 5 and as a Spencer Valley feeder school for grades 6 to 8.
  - Capital requirements at Spencer Valley-FDK rooms, classroom additions, music room upgrades, gymnasium upgrades, science & art room upgrades as well as any other high, urgent and capital needs to convert the middle school to a 21<sup>st</sup> century learning JK to 8 school.

# Secondary Boundaries and Associated Elementary Schools



West Flamborough Transitions

ZONE 1

- All students attend Dr. John Seaton until they move to the new school on Beverly Community centre site when it opens

ZONE 2

- K-5 students attend Beverly Central until they move to the new school on Beverly Community Centre site when it opens
- 6-8 students attend Dr. John Seaton until they move to the new school on Beverly Community Centre site when it opens

ZONE 3

- All students attend Dr. John Seaton until they move to the new school on Beverly Community centre site when it opens
- For 2019-20, Grade 8 students will be given the option of continuing to attend the school on the Ancaster Senior/Fessenden site or Dr. John Seaton

ZONE 4

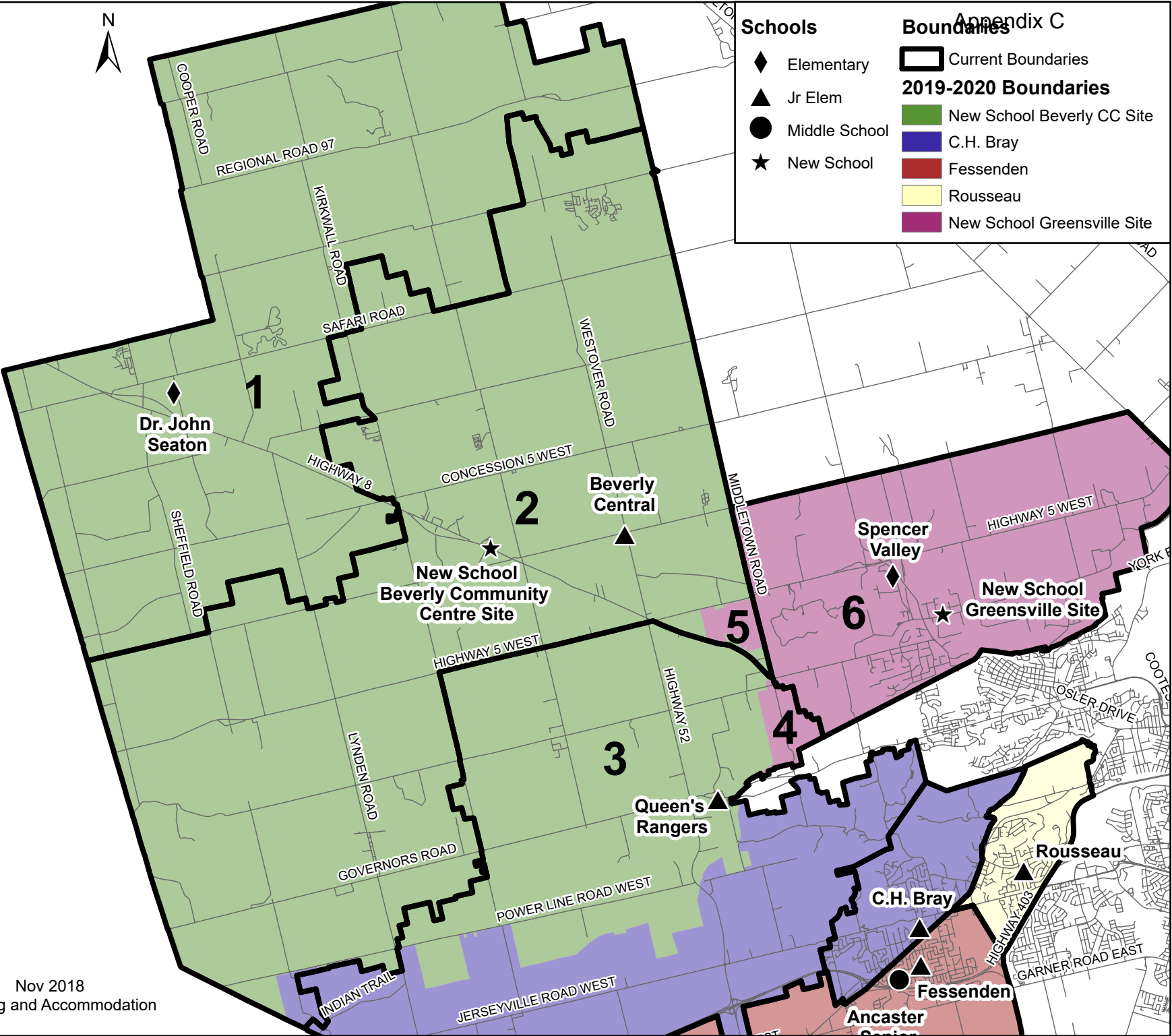
- All students attend Spencer Valley
- For 2019-20, students will be given the option of continuing to attend the CH Bray holding school (Queens Rangers site) for K-6 and the school on the Ancaster Senior/Fessenden site for Grades 7-8

ZONE 5

- All students attend Spencer Valley until they move to the new school on Greenville site when it opens
- For 2019-20, students will be given the option of continuing to attend Beverly Central for K-5 and Dr. John Seaton for Grades 6-8

ZONE 6

- All students attend Spencer Valley until they move to the new school on Greenville site when it opens



## Lower Stoney Creek Transitions

### ZONE 1

- All students attend Mountain View until they move to the new school on Eastdale site when it opens

### ZONE 2

- All students will temporarily attend Green Acres until they move to the new school on Eastdale site when it opens

### ZONE 3

- All students attend Mountain View until they move to the new school on Eastdale site when it opens

### ZONE 4

- All students attend Mountain View until they move to the new school on Memorial (SC) site when it opens

### ZONE 5

- All students attend Memorial (SC) until they move to the new school on Memorial (SC) site when it opens

### ZONE 6

- All students will temporarily attend R.L. Hyslop until they move to the new school on Collegiate site when it opens

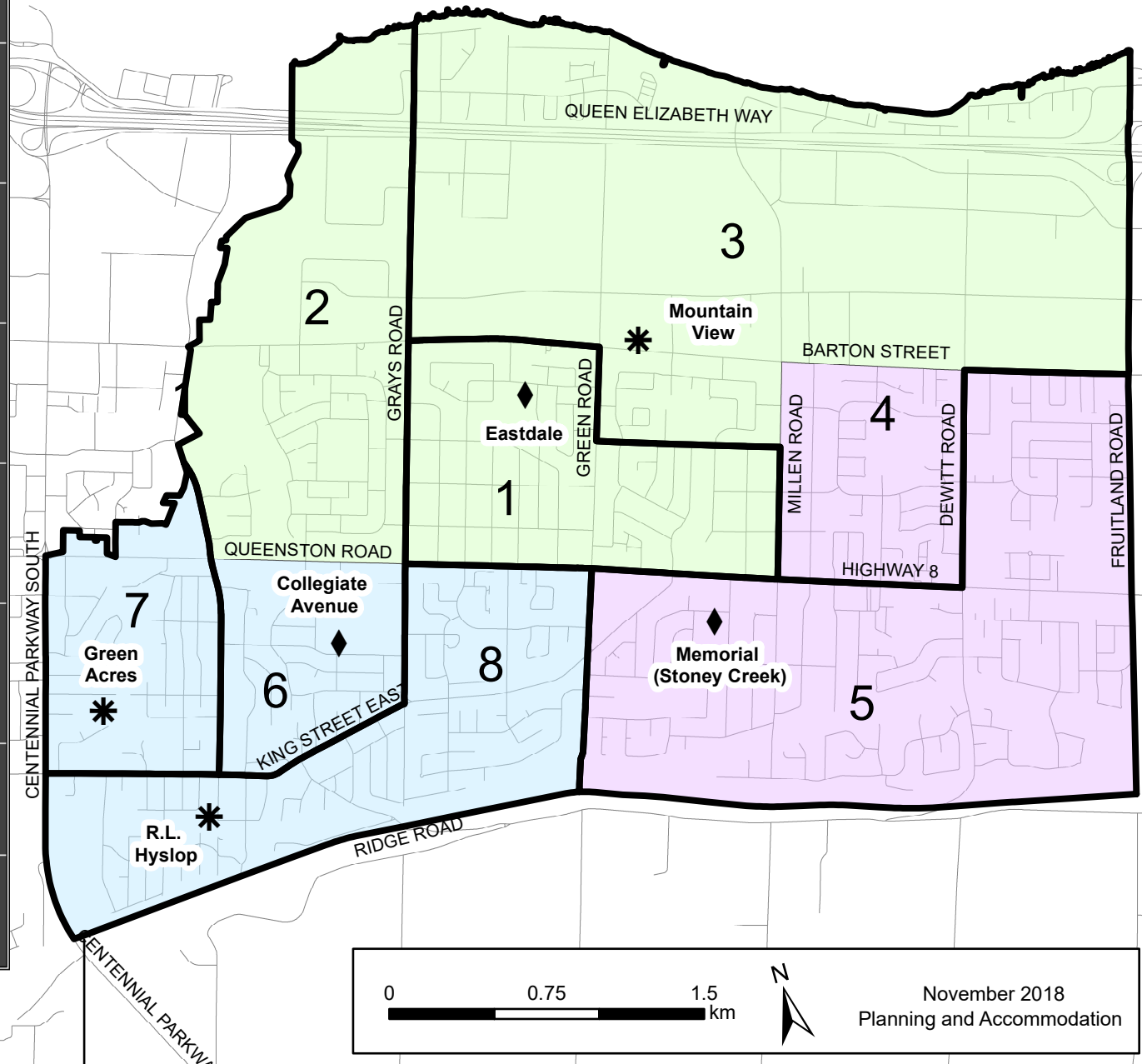
### ZONE 7

- All students attend Green Acres until they move to the new school on Collegiate site when it opens

### ZONE 8

- All students attend R.L. Hyslop until they move to the new school on Collegiate site when it opens

◆ JK-8 School	<b>Approved Boundaries</b>
* Closed School	Collegiate Avenue
□ Current Boudaries	Eastdale
	Memorial (Stoney Creek)





Ancaster Transitions

ZONE 1

- All students attend Dr. John Seaton until they move to the new school on Beverly Community centre site when it opens
- For 2019-20, Grade 8 students will be given the option of continuing to attend the school on the Ancaster Senior/Fessenden site or Dr. John Seaton

ZONE 2

- All students attend Spencer Valley
- For 2019-20, students will be given the option of continuing to attend the CH Bray holding school (Queens Rangers site) for K-6 and the school on the Ancaster Senior/Fessenden site for Grades 7-8

ZONE 3

- K-6 students attend the CH Bray holding school (Queens Rangers site)
- Grades 7-8 students continue to attend the school on the Ancaster Senior/Fessenden site

ZONE 4

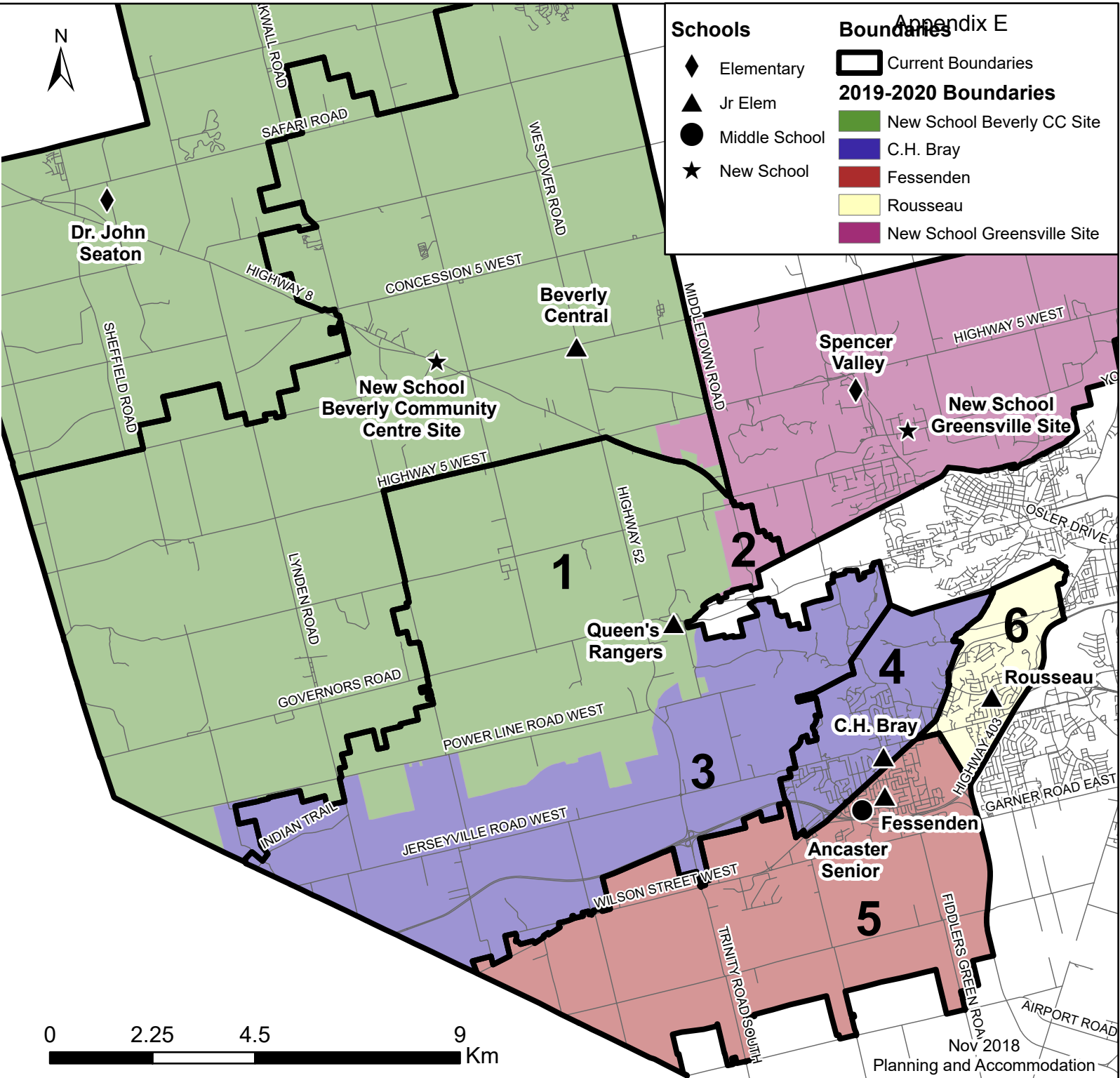
- K-6 students attend the CH Bray holding school (Queens Rangers site)
- Grades 7-8 students continue to attend the school on the Ancaster Senior/Fessenden site

ZONE 5

- All students continue to attend the school on the Ancaster Senior/Fessenden site

ZONE 6

- K-6 students continue to attend Rousseau
- Grades 7-8 students continue to attend the school on the Ancaster Senior/Fessenden site





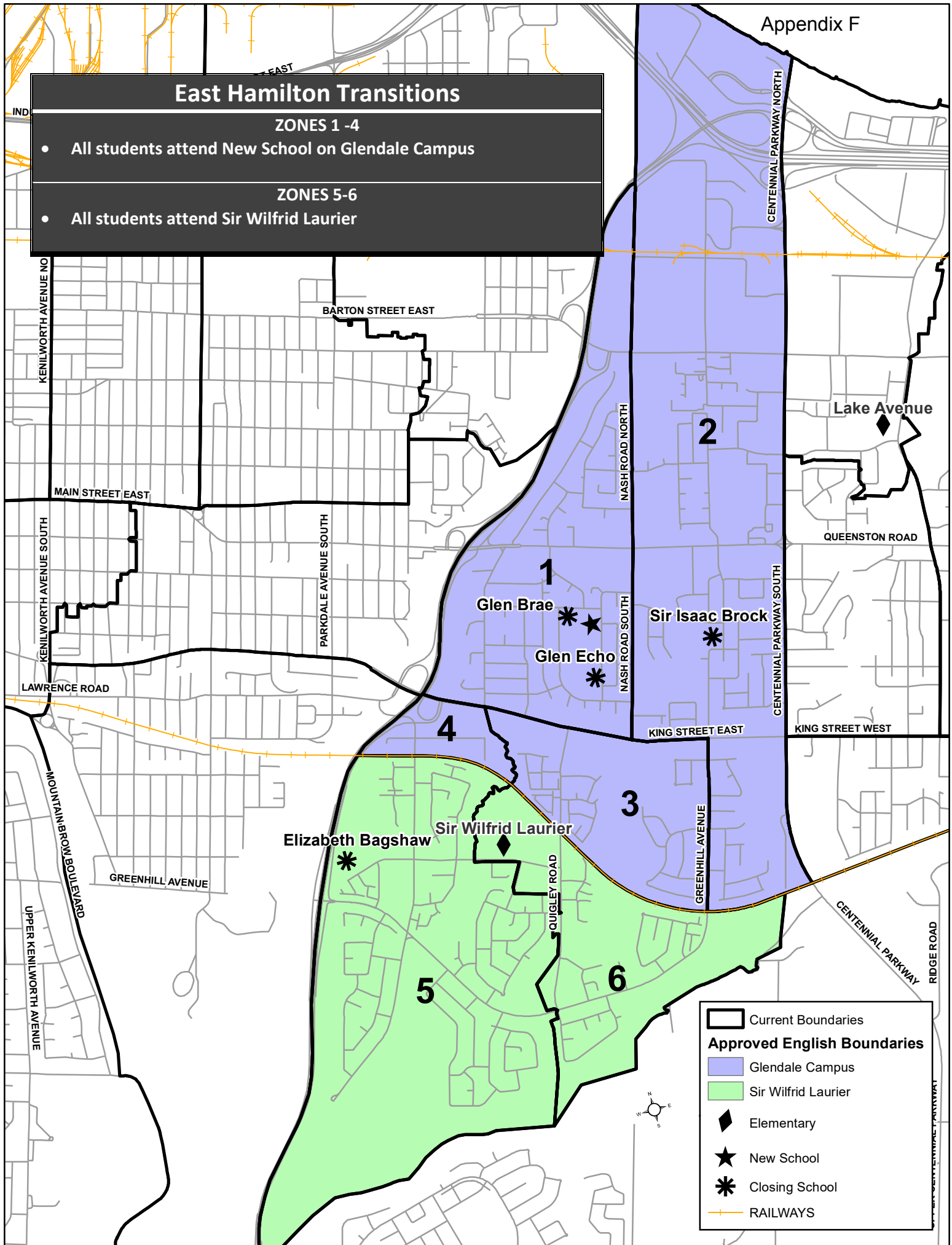
## East Hamilton Transitions

### ZONES 1 -4

- All students attend New School on Glendale Campus

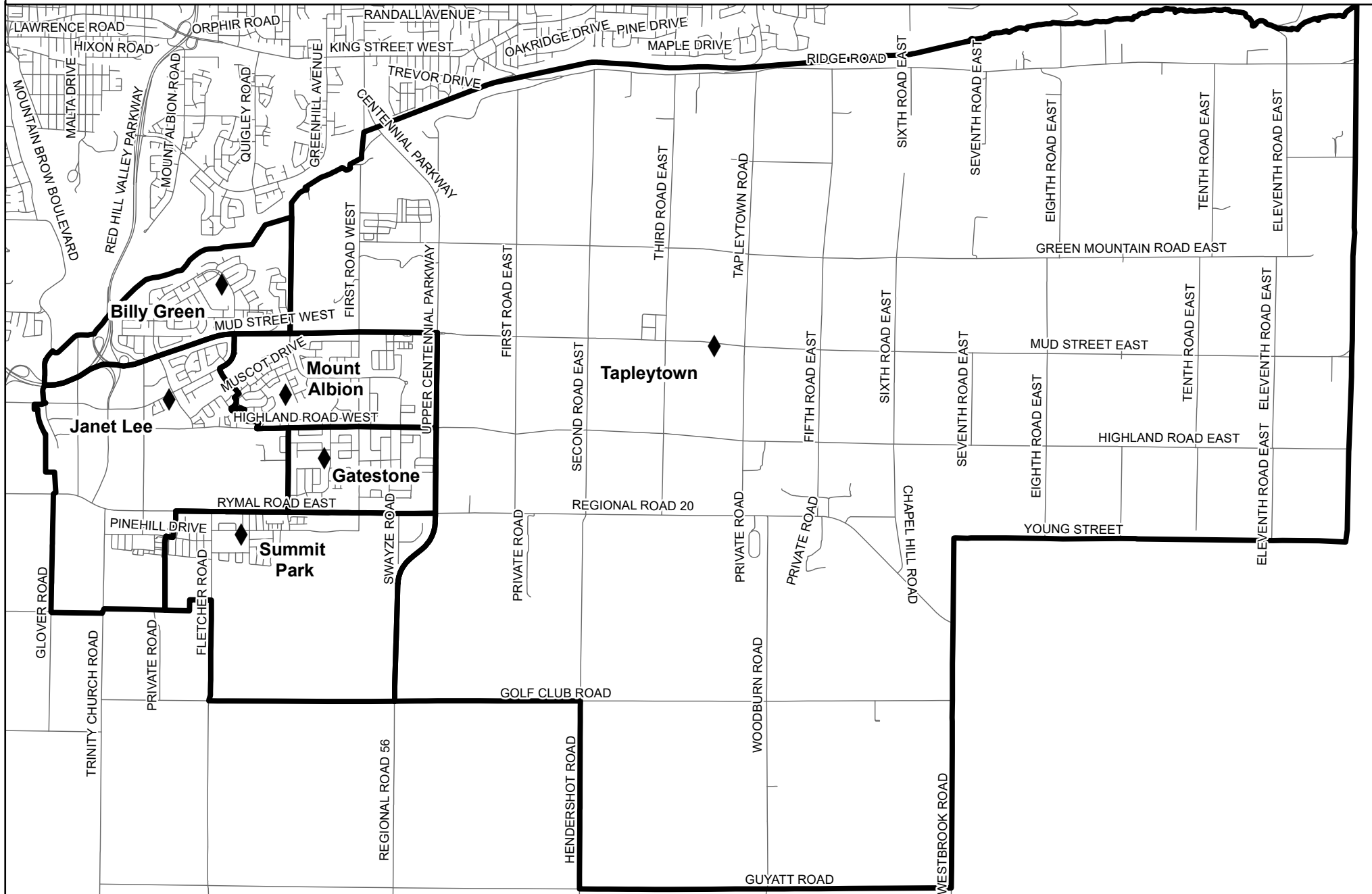
### ZONES 5-6

- All students attend Sir Wilfrid Laurier




# Upper Stoney Creek - Approved Boundaries

Appendix G



## Approved Boundaries

 K-8 Boundary



0 1 2 4 Km

**HWDSB**

November 2018

Planning and Accommodation

*Summary of Projects Related to Transitions*

Project	PAR	Construction Status	Expected Completion of Construction	Naming	Consolidation	Transition Committee to Start Meeting
Bernie Custis Secondary School	Secondary	In process	September 2019	Done	Y	2017-18
Nora F. Henderson Secondary School	Secondary	In process	September 2020	Done	Y	2019-20
New Elementary School on Beverly site	West Flamborough	In process	2019-20 school year	2018-19	Y	2018-19
New Elementary School on Greensville site	West Flamborough	Out for tender	12-16 months after start of construction	2019-20	Y	2019-20
New Elementary School on Eastdale site	Lower Stoney Creek	In process	2019-20 school year	2018-19	Y	2018-19
New Elementary School on Memorial (Stoney Creek) site	Lower Stoney Creek	In for SPA	12-16 months after start of construction	2019-20	Y	2019-20
Addition/Renewal at Collegiate Elementary School	Lower Stoney Creek	In for SPA	12-16 months after start of construction	2019-20	Y	2018-19
New Elementary School on Glendale Campus	East Hamilton City	In for SPA	12-16 months after start of construction	2019-20	Y	2019-20
Addition to Wilfrid Laurier	East Hamilton City	In process	2018-19 school year	2019-20	Y	2019-20
New Elementary School on CH Bray site	Ancaster	In for SPA	12-16 months after start of construction	2018-19	Y	2018-19
Addition to Ancaster Senior	Ancaster	In for SPA	September 2019	2018-19	Y	2018-19
New Elementary School on Summit Park site	N/A	In process	September 2019	2018-19	N	2018-19
Addition to Mount Albion	N/A	In for SPA	12-16 months after start of construction	N/A	N	N/A

*Closures, Namings and Transition Committees Happening in 2018-19*

***Schools Closing in June 2019***

Delta Secondary School  
Sir John A. MacDonald Secondary School  
Beverly Central Elementary School  
Dr John Seaton Elementary School  
Queen's Rangers Elementary School  
CH Bray Elementary School  
Ancaster Senior Public School  
Fessenden Elementary School  
Collegiate Elementary School

***Schools to be Named in 2018-19***

New School on Beverly Community Centre site  
New School on CH Bray site  
New School on Ancaster Senior site  
New School on Eastdale site  
New School on Summit Park site

***Transition Committees in 2018-19***

Bernie Custis Secondary School  
New School on Beverly Community Centre site  
New School on Eastdale site  
Addition/Renewal at Collegiate  
New School on CH Bray site  
Addition to Ancaster Senior  
New School on Summit Park site