

# HATS

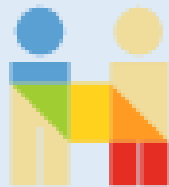
## Hamilton Alliance for Tiny Shelters



# Core HATS Partners Include:

## Hamilton Roundtable for Poverty Reduction

Our  
Charitable  
Partner:



Hamilton Community Legal Clinic  
Clinique juridique communautaire de Hamilton

Giving someone a safe, warm,  
place they can call home  
is one of the first stages  
in healing the whole person



Photo: Denise Davy



# Part of a Growing Movement



Vancouver



Kingston



Seattle



London ON



Halifax



Dartmouth



Fredericton

## Our Model:

Award-Winning KW Project  
(on land co-owned by  
City of Kitchener & Waterloo  
Region District School Board)







- Top-quality materials
- Insulated
- Heater installed
- Built to Ontario Fire Code
- Materials sprayed with fire retardant
- Access to extinguishers





St Louis, Missouri



**Phase One:** 10 cabins

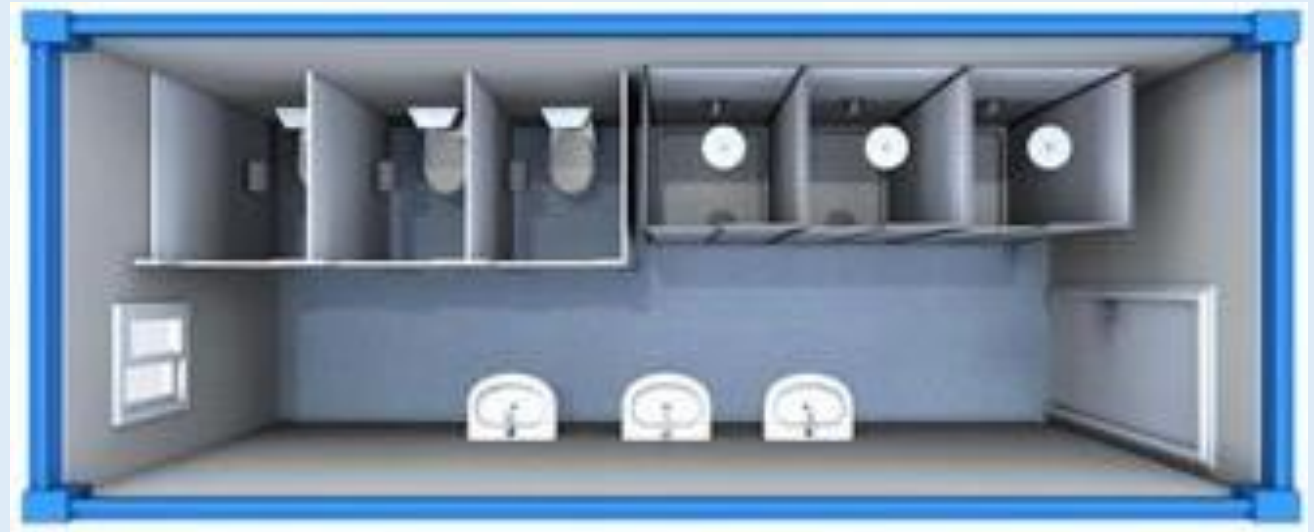
**Phase Two:** Expand to 20

- Cabins are 8' x 10'
- Building permit  
not required ~ under 108 sq ft  
& no plumbing
- Movable



# Converted Shipping Containers or Portables:

- Toilets
- Showers
- Laundry room



## Evening Meals in Portable Kitchen







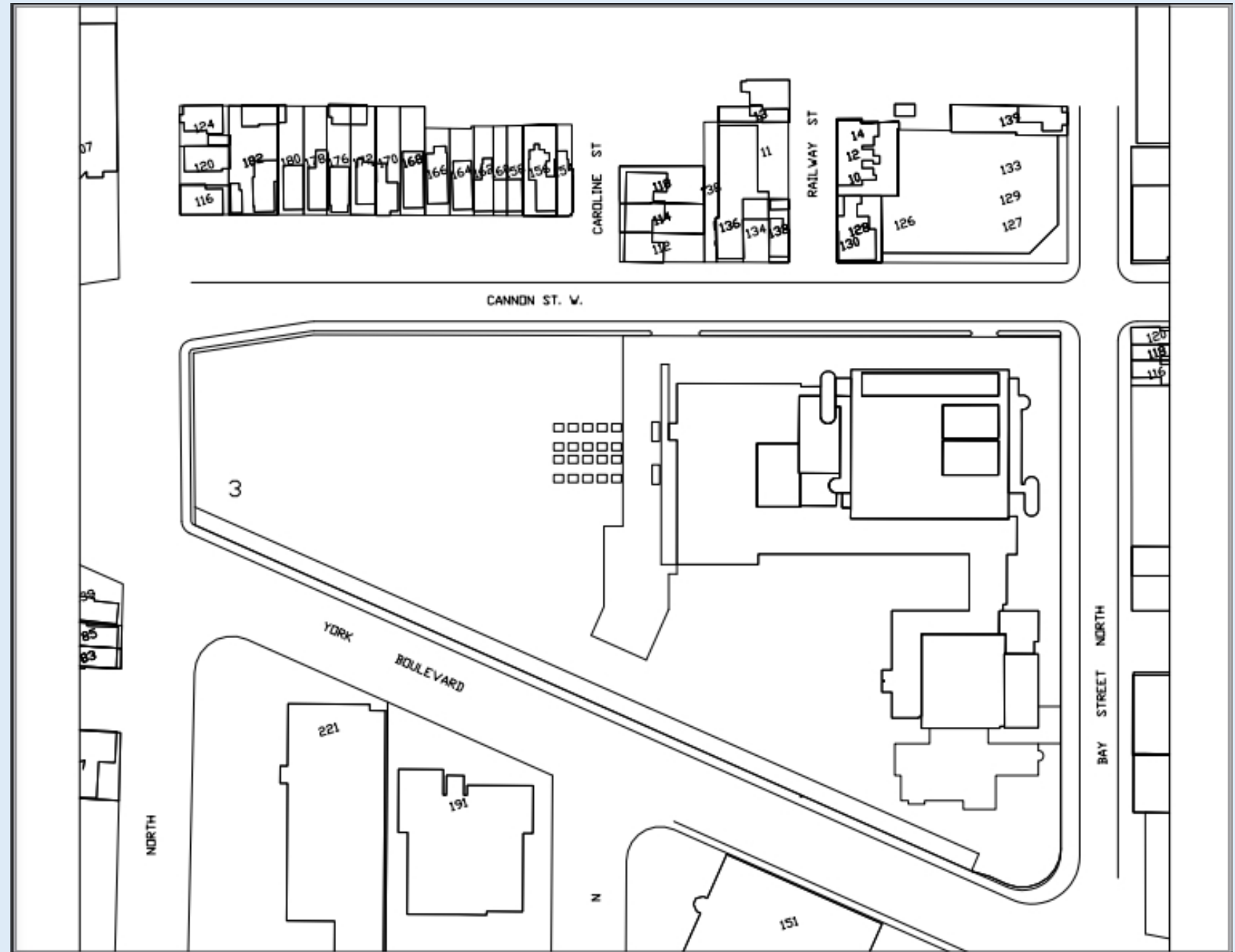
## TEMPORARY SJAM SITE

West side  
of school  
building,  
facing north  
to Cannon St



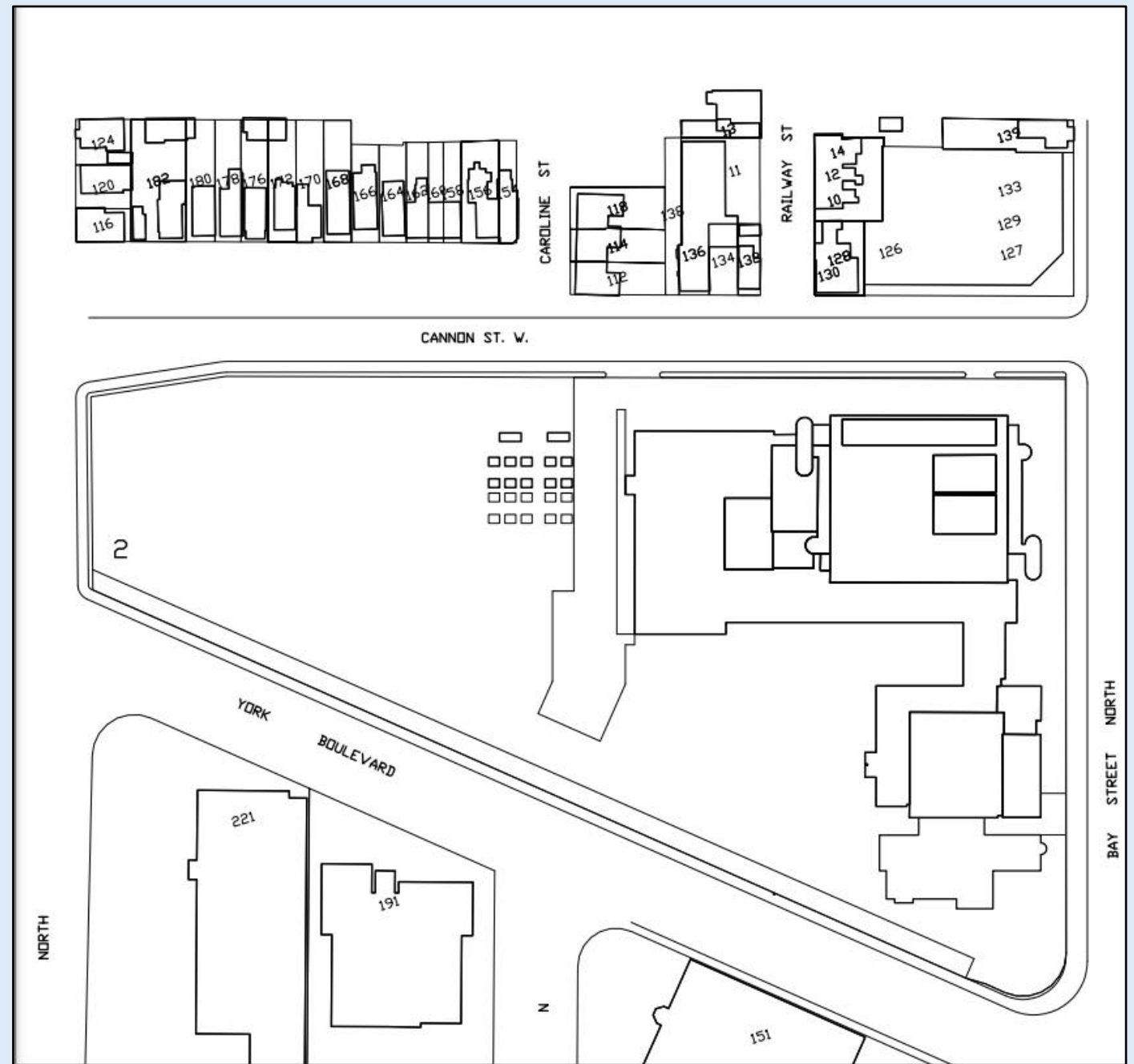
## SITE PLAN OPTION 1:

Cabins west of fence,  
portables in driveway



## SITE PLAN OPTION 2:

Cabins & portables  
west of fence  
Alignment Option A)



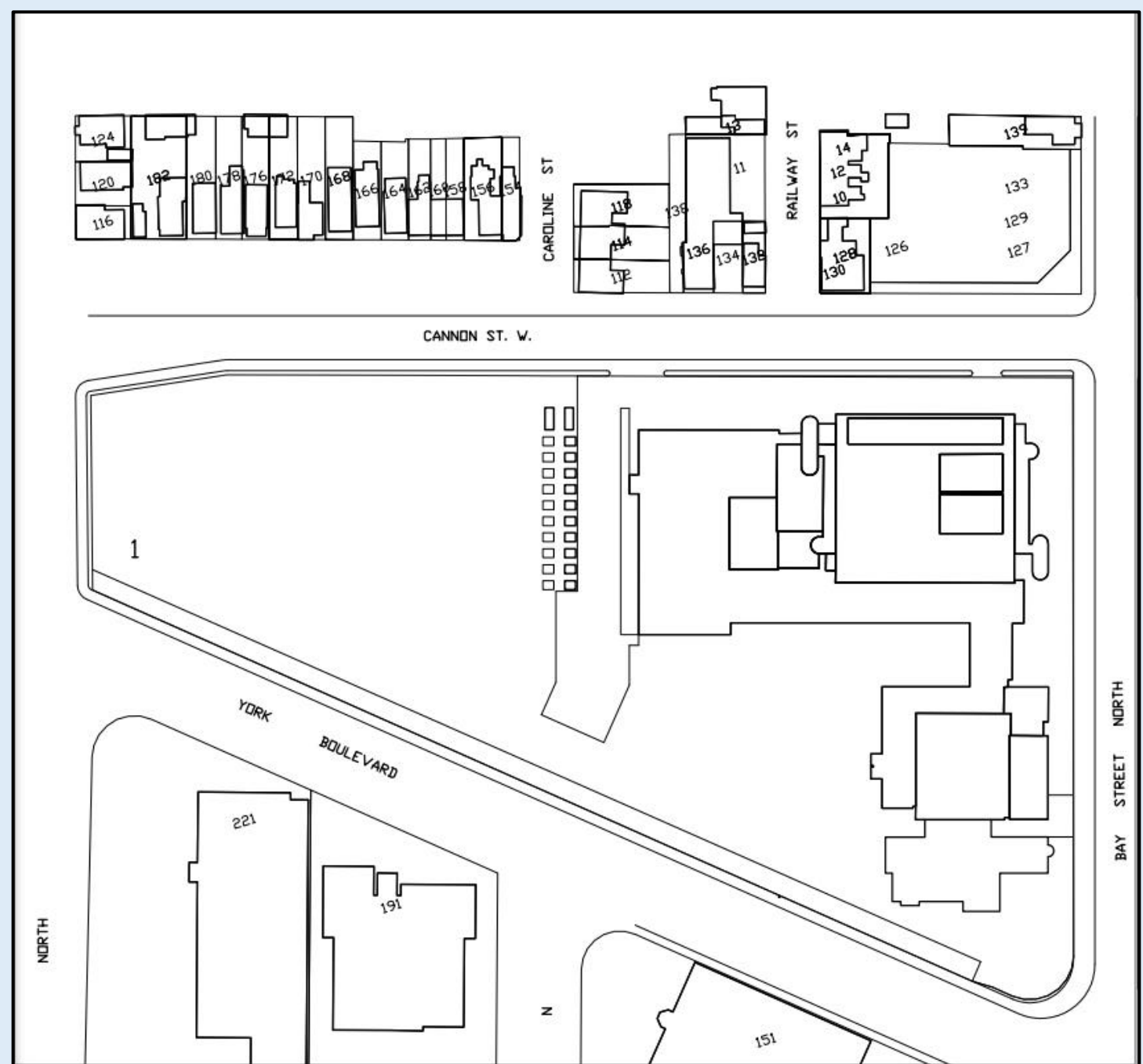


## SITE PLAN OPTION 3:

Cabins & portables

west of fence

Alignment Option B)



# Wrap-around Services & Program Features



- Healthcare
- Harm reduction
- On-site jobs for Residents

## OPERATING COSTS:

- Portion of residents' OW or ODSP payments
- Grants & Donations
- Awaiting approval: Funding from  
City of Hamilton Emergency & Community Services  
Committee

## Site Superintendent Wages:

In KW, paid by St. Mary's Parish, Kitchener



# SITE SAFETY

COAST HAMILTON



In exceptional circumstances, connect with these organizations (nurses & paramedics accompany specially-trained officers) to:

- De-escalate
- Pursue a holistic response
- Make appropriate referrals

“What this has done is reduce the demand, for example, for overdose calls and public washroom calls.

“It’s reduced the demand on trespassing complaints, it’s reduced the demand on general disorder complaints.”

**- Waterloo Region Police Chief Bryan Larkin**

## Transition To More Permanent Housing Solution



We hope to collaborate also with Good Shepherd and the YWCA to offer residents an exit strategy to more permanent housing solution