

A map of the Waterdown area, showing a network of roads and water bodies. The map is in grayscale, with blue used for water bodies and green for some land areas. The title text is overlaid on the map.

Waterdown Boundary Review

Final Report
(Revised January 20, 2026)

Summary of Revisions

Based on feedback received from the Finance & Facilities Committee on January 13, 2026, the following revisions have been added to the Final Report.

- Page 25 now uses **“Staff Recommended Option”** as the section heading, replacing the previous “Recommended Option.”
- Throughout pages 25–29, all mentions of “Recommended Option” have been updated for consistency with the new heading.
- Two new visuals—**Figures 7 and 8**—have been inserted on page 26 to provide additional clarity.
- **Tables 32 through 37** (pages 27–29) have been revised so that all references now state **“Staff Recommended Option.”**

Contents

List of Figures	3
List of Tables.....	3
Background	5
Advisory Panel	9
Public Meeting.....	10
Accommodation Options	10
Evaluation Criteria	11
Option 1.....	11
Option 2.....	15
Option 3.....	18
Option 4.....	20
Staff Recommended Option	25
Community Feedback	29
Conclusion.....	29
Next Steps	30

List of Figures

Figure 1: Waterdown Boundary Review- Status Quo Map	6
Figure 2: Key Considerations for Boundary Options	11
Figure 3: Options 1-3 Proposed Boundary Map	12
Figure 4: Options 1-3 Proposed Boundary Map- Zoomed	12
Figure 5: Option 4 Proposed Boundary Map	21
Figure 6: Option 4 Proposed Boundary Map- Zoomed	22
Figure 7: Staff Recommended Option Map	26
Figure 8: Staff Recommended Option Map Zoomed	26

List of Tables

Table 1: Allan A. Greenleaf ES Status Quo Enrolment and Projections	6
Table 2: Balaclava ES Status Quo Enrolment and Projections	7
Table 3: Flamborough Centre ES Status Quo Enrolment and Projections	7
Table 4: Guy B. Brown ES Status Quo Enrolment and Projections	8
Table 5: Mary Hopkins ES Status Quo Enrolment and Projections.....	8

Table 6: Advisory Panel Meeting Summary	9
Table 7: Public Meeting Summary	10
Table 8: Allan A. Greenleaf ES Option 1 Enrolment and Projections.....	13
Table 9: Balaclava ES Option 1 Enrolment and Projections.....	13
Table 10: Flamborough Centre ES Option 1 Enrolment and Projections.....	14
Table 11: Guy B. Brown ES Option 1 Enrolment and Projections	14
Table 12: Mary Hopkins ES Option 1 Enrolment and Projections	14
Table 13: Waterdown Elementary Option 1 Enrolment and Projections	15
Table 14: Allan A. Greenleaf ES Option 2 Enrolment and Projections.....	16
Table 15: Balaclava ES Option 2 Enrolment and Projections.....	16
Table 16: Flamborough Centre ES Option 2 Enrolment and Projections.....	16
Table 17: Guy B. Brown ES Option 2 Enrolment and Projections	17
Table 18: Mary Hopkins ES Option 2 Enrolment and Projections	17
Table 19: Waterdown Elementary Option 2 Enrolment and Projections	17
Table 20: Allan A. Greenleaf ES Option 3 Enrolment and Projections.....	19
Table 21: Balaclava ES Option 3 Enrolment and Projections.....	19
Table 22: Flamborough Centre ES Option 3 Enrolment and Projections.....	19
Table 23: Guy B. Brown ES Option 3 Enrolment and Projections	20
Table 24: Mary Hopkins ES Option 3 Enrolment and Projections	20
Table 25: Waterdown Option 3 Enrolment and Projections	20
Table 26: Allan A. Greenleaf ES Option 4 Enrolment and Projections.....	23
Table 27: Balaclava ES Option 4 Enrolment and Projections.....	23
Table 28: Flamborough Centre ES Option 4 Enrolment and Projections.....	23
Table 29: Guy B. Brown ES Option 4 Enrolment and Projections	24
Table 30: Mary Hopkins ES Option 4 Enrolment and Projections	24
Table 31: Waterdown Elementary Option 4 Enrolment and Projections	24
Table 32: Allan A. Greenleaf ES Staff Recommended Option Enrolment and Projections.....	27
Table 33: Balaclava ES Staff Recommended Option Enrolment and Projections	27
Table 34: Flamborough Centre ES Staff Recommended Option Enrolment and Projections.....	28
Table 35: Guy B. Brown ES Staff Recommended Option Enrolment and Projections.....	28
Table 36: Mary Hopkins ES Staff Recommended Option Enrolment and Projections	28
Table 37: Waterdown Elementary Staff Recommended Option Enrolment and Projections	29

Background

The Waterdown community has experienced substantial residential growth over the past decade, resulting in increased enrolment pressures across the area schools. Additional residential developments are planned, which will further impact school capacities in the coming years.

To address current and future accommodation needs, the Board received funding in 2024 for the construction of a new elementary school within the Mountainview Heights development in southeast Waterdown. This new facility will provide 504 pupil places and include a five-room child care centre. The school is scheduled to open during the 2027–2028 school year.

In anticipation of this new school and to provide short-term relief from accommodation pressures, the Board approved an interim accommodation strategy in 2023–2024 to better balance enrolment among existing schools. At the [February 26, 2024](#) Board Meeting, HWDSB Trustees approved the Waterdown Accommodation Strategy, which implemented the following temporary measures:

- **French Immersion:** Mary Hopkins Elementary School Grade 5 students and Flamborough Centre Elementary School Grades 6–8 redirected to Guy B. Brown Elementary School.
- **English Track:** Mary Hopkins Elementary School Grade 5 students redirected to Flamborough Centre Elementary School.
- **New Regular Track Students:** New students residing south of Highway 5 in the Mary Hopkins Elementary School boundary directed to Allan A. Greenleaf Elementary School.

In accordance with Board Policy in effect at the time of the initiation of the review, which states that boundary modifications should be considered when new schools are constructed, HWDSB Trustees approved the initiation of the Waterdown Boundary Review on [May 5, 2025](#). The review study area includes the following schools:

- Allan A. Greenleaf Elementary School (ES) – JK to Grade 8
- BalACLava Elementary School (ES) – JK to Grade 8
- Flamborough Centre Elementary School (ES) – JK to Grade 8
- Guy B. Brown Elementary School (ES) – JK to Grade 8 (English) and Grades 1–8 (French Immersion)
- Mary Hopkins Elementary School (ES) – JK to Grade 4 (English) and Grades 1–4 (French Immersion)

The current attendance boundaries for the above schools are shown in the Status Quo map in figure 1 below:

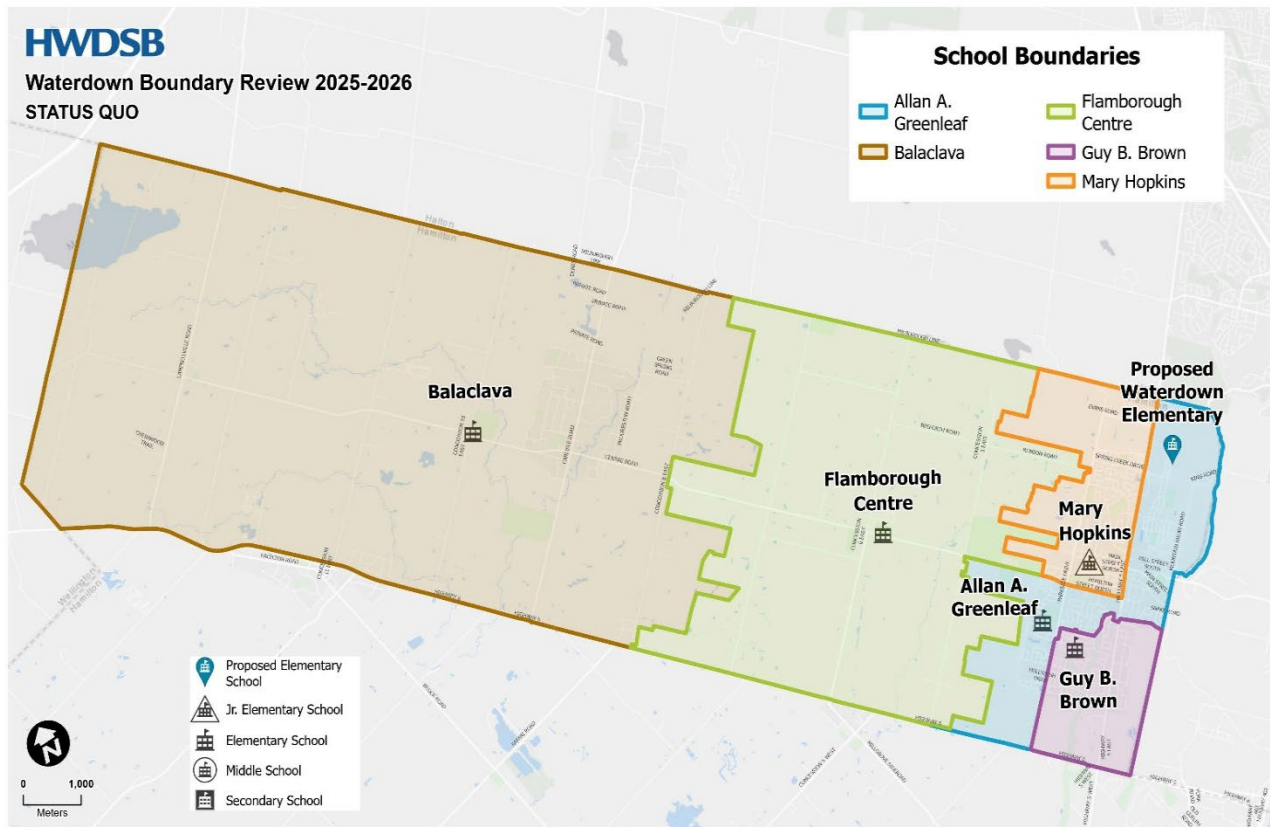


Figure 1: Waterdown Boundary Review- Status Quo Map

Based on the current attendance boundaries shown in Figure 1, the tables below present enrolment projections for each school as of September 30, 2025. These projections reflect a status quo scenario, assuming no changes to existing school boundaries and no construction of the new school.

Within the tables, On-the-Ground (OTG) Capacity refers to the Ministry-rated number of pupil places that a school building can reasonably accommodate. Total Capacity represents the OTG capacity plus additional pupil places provided through temporary accommodations (portables and/or portapaks) currently located on each site.

Table 1: Allan A. Greenleaf ES Status Quo Enrolment and Projections

Allan A. Greenleaf ES									
On the Ground Capacity	Portables	Total Capacity	Program	2025	2026	2027	2028	2029	2030
548	8	732	English	775	819	848	905	985	1073
			French	0	0	0	0	0	0
	Portable Capacity		Total	775	819	848	905	985	1,073
	184		Utilization	141%	149%	155%	165%	180%	196%
			Utilization with Portables	106%	112%	116%	124%	135%	147%

As a result of the 2023-2024 Temporary Accommodation Strategy, and the redirecting of all new students south of Highway 5 in the Mary Hopkins ES boundary, Allan A. Greenleaf ES is experiencing high enrolment numbers and is currently well over the building capacity with 8 portables on site. Without the construction of the new school, the enrolment is projected to increase over 1,000 students by 2030. The growth can be attributed to the new residential development within the current attendance boundary of the school.

Table 2: Balaclava ES Status Quo Enrolment and Projections

Balaclava ES									
On the Ground Capacity	Portables	Total Capacity	Program	2025	2026	2027	2028	2029	2030
381	0	381	English	312	300	296	291	272	274
			French	0	0	0	0	0	0
	Portable Capacity		Total	312	300	296	291	272	274
	0		Utilization	82%	79%	78%	76%	71%	72%
			Utilization with Portables	82%	79%	78%	76%	71%	72%

Table 2 above illustrates that the enrolment at Balaclava ES is being accommodated with the building's capacity and is projected to stay stable with a slight decline. The school did not experience any changes to the attendance boundary through the 2023-2024 Accommodation Strategy and is not currently experiencing any growth pressures.

Table 3: Flamborough Centre ES Status Quo Enrolment and Projections

Flamborough Centre ES										
On the Ground Capacity	Portables	Total Capacity	Program	2025	2026	2027	2028	2029	2030	
243	7	404	English	346	365	328	313	298	265	
			French	0	0	0	0	0	0	
	Portable Capacity		Total	346	365	328	313	298	265	
	161		Utilization	142%	150%	135%	129%	123%	109%	
			Utilization with Portables	86%	90%	81%	77%	74%	66%	

The current enrolment at Flamborough Centre ES is shown in table 3 as being over the building capacity, resulting in a utilization of 142%. However, this utilization does not include the 6 room portapak located on site and connected to the building. With the portables on site the school is currently at 86% utilization. With no active residential development within the attendance boundary, smaller JK cohorts registering at the school, and the redirection of the French

Immersion grades 6-8 through the Temporary Accommodation Strategy, the school enrolment is projected to decline to approximately 265 students by 2030.

Table 4: Guy B. Brown ES Status Quo Enrolment and Projections

Guy B. Brown ES									
On the Ground Capacity	Portables	Total Capacity	Program	2025	2026	2027	2028	2029	2030
632	5	747	English	401	406	401	385	371	363
			French	288	296	293	300	306	305
	Portable Capacity		Total	689	703	694	686	677	669
	115		Utilization	109%	111%	110%	108%	107%	106%
			Utilization with Portables	92%	94%	93%	92%	91%	90%

Table 4 above provides that the current enrolment at Guy B. Brown ES is slightly over capacity with a utilization of 109% and is projected to stay fairly stable through to 2030. The school experienced some growth through the 2023-2024 Temporary Accommodation Strategy in receiving the French Immersion grades 5-8 from Mary Hopkins ES and Flamborough Centre ES, however it is accommodating the additional students within the school and current portables on site.

Table 5: Mary Hopkins ES Status Quo Enrolment and Projections

Mary Hopkins ES									
On the Ground Capacity	Portables	Total Capacity	Program	2025	2026	2027	2028	2029	2030
401	5	516	English	327	294	280	267	257	258
			French	119	109	98	100	90	91
	Portable Capacity		Total	446	404	378	367	347	349
	115		Utilization	111%	101%	94%	91%	87%	87%
			Utilization with Portables	86%	78%	73%	71%	67%	68%

Mary Hopkins ES has experienced relief from accommodation pressures through the Temporary Accommodation Strategy and is currently at 111% utilized. Without any of the residential growth south of Highway 5 currently within its attendance boundary, the enrolment projections provided in table 5 above detail a decline to about 349 students (87% utilized) by 2030.

Community Consultation Methodology

Engaging with affected school communities is a core guiding principle of the Boundary Review process. In alignment with Board Policy, public consultation was structured around two key components designed to ensure transparency and meaningful input:

- **Boundary Review Advisory Panel:** includes a minimum of two representatives from each affected school. The school representatives, along with the Boundary Review Resource Team members, analyze the Boundary Review data, accommodation challenges and boundary solutions.
- **Public Meeting:** facilitated by the resource team, is a public information session to share information, ask questions and share feedback on proposed boundary options.

This two-tiered approach ensures that the voices of impacted families and community members are considered throughout the decision-making process.

Advisory Panel

Following the initiation of the Boundary Review, an Advisory Panel was established in October 2025 to serve as a communication link between the school communities and the school board. Over the course of three meetings, the Advisory Panel members reviewed and provided feedback on the initial boundary change options. Members engaged in discussion, analysis, and commentary to ensure that all community perspectives were considered. Throughout these meetings, the Advisory Panel shared a range of ideas and concerns intended to inform Trustees as they review the recommended option.

The following table outlines the three Advisory Panel meetings that were held as part of the Waterdown Boundary Review:

Table 6: Advisory Panel Meeting Summary

Meeting	Date	Summary	Documents
Advisory Panel 1	October 30, 2025	<ul style="list-style-type: none">• Reviewed Boundary Review process and timeline, roles and responsibilities of the panel, communication and feedback process and school information.• Discussed evaluation criteria matrix and evaluated the initial boundary option.• Question and answer period with Advisory Panel.	Presentation Supporting Documents
Advisory Panel 2	November 13, 2025	<ul style="list-style-type: none">• Reviewed timeline and community feedback received to date through Engage Website and emails.• Presentation of new options and evaluated in groups using the matrix.• Discussed public meeting format- Open House details.• Question and answer period with Advisory Panel.	Presentation Supporting Documents

Advisory Panel 3	December 11, 2025	<ul style="list-style-type: none"> Reviewed timeline and community feedback received through public meeting and Engage Website. Option consensus discussion- Option 4 with new considerations. Next steps were outlined- final report dates and communication plan. 	Presentation Supporting Documents
------------------	-------------------	--	--

Public Meeting

A public meeting was held at Waterdown District High School on November 27, 2025. The meeting was organized as an open house, where staff provided a short presentation at the start of the meeting and then attendees were invited to walk around the space, review the information boards provided for each option and the Boundary Review Resource Team was available to answer questions and record feedback. This format provided an opportunity for families, staff, and other community members to receive information regarding the Boundary Review, ask questions, and express their ideas and concerns. The public meeting was advertised on the Board website, Engage website and electronic letters home to the affected school communities.

Table 7 below outlines the public meeting open house details:

Table 7: Public Meeting Summary

Date	Summary	Documents
November 27, 2025	<ul style="list-style-type: none"> Presentation outlined Boundary Review process, timelines, communication and feedback to date, key considerations for options created and process for the open house format. Information boards were set up around the room detailing school information, option information and blank boards for written feedback. Resource Team Members were available to answer questions and receive feedback from community members. 	Presentation Supporting Documents

Accommodation Options

Throughout the Boundary Review process, HWDSB staff developed and presented four accommodation options for consideration by both the Advisory Panel and the public. These options were designed to establish the attendance boundary for the new Waterdown Elementary School and to honor the Board's commitment to revisit and address the changes resulting from the 2023–2024 Temporary Accommodation Strategy.

Each provided option includes strategies for short-term measure to manage current enrolment pressures for the 2026-2027 school year, and long-term solutions beginning with the opening of the school in 2027-2028. The development and evaluation of these options were guided by the key considerations outlined in Figure 2 below.

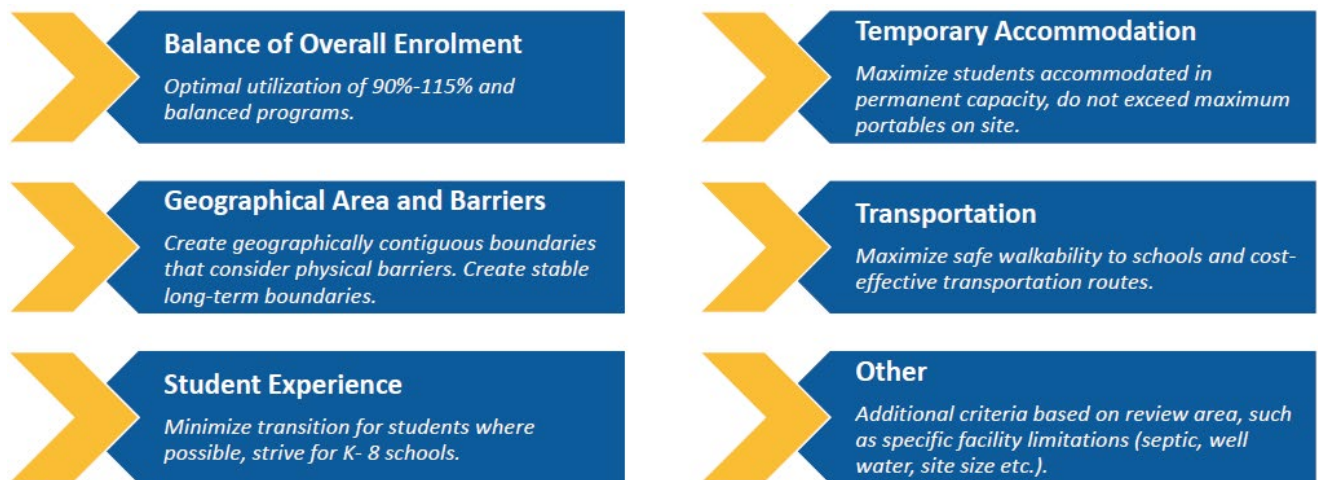


Figure 2: Key Considerations for Boundary Options

Evaluation Criteria

As per Board Policy, a key component of the Advisory Panel mandate is to establish the Boundary Review evaluation criteria. The purpose of the criteria is to provide a road map for evaluating the various proposed accommodation options to ensure that coming to a consensus within the panel is done so objectively and consistent.

The evaluation criteria finalized by the Advisory Panel is as follows:

1. School enrolment does not exceed maximum accommodation capacity.
2. Balance of French and English program enrolments.
3. Reliance on temporary accommodation is balanced and feasible.
4. Limit the number of school moves- Strive to keep families together.
5. Geographically contiguous boundaries- Walkability and limit bus times.

Option 1

Option 1 was presented at the first Advisory Panel Meeting, and includes the following proposed strategies:

2026-2027

- New Junior Kindergarten to grade 4 students south of Highway 5 from Howard Boulevard to Kerns Road redirected to Mary Hopkins ES.

2027-2028

- New Waterdown Elementary School Boundary - South of Highway 5, from Howard Boulevard to Kerns Road. The proposed school boundaries are illustrated in figures 3 and 4 below. All students located within this boundary to attend the new school. No legacy considerations.
- Regular Track - Mary Hopkins ES retain the grade 5 students within its regular track boundary.

- French Immersion - Mary Hopkins ES retain the grade 5 students within its French Immersion boundary. Grades 6-8 French Immersion program is directed to Flamborough Centre ES, with the students currently at Guy B. Brown ES staying and graduating.

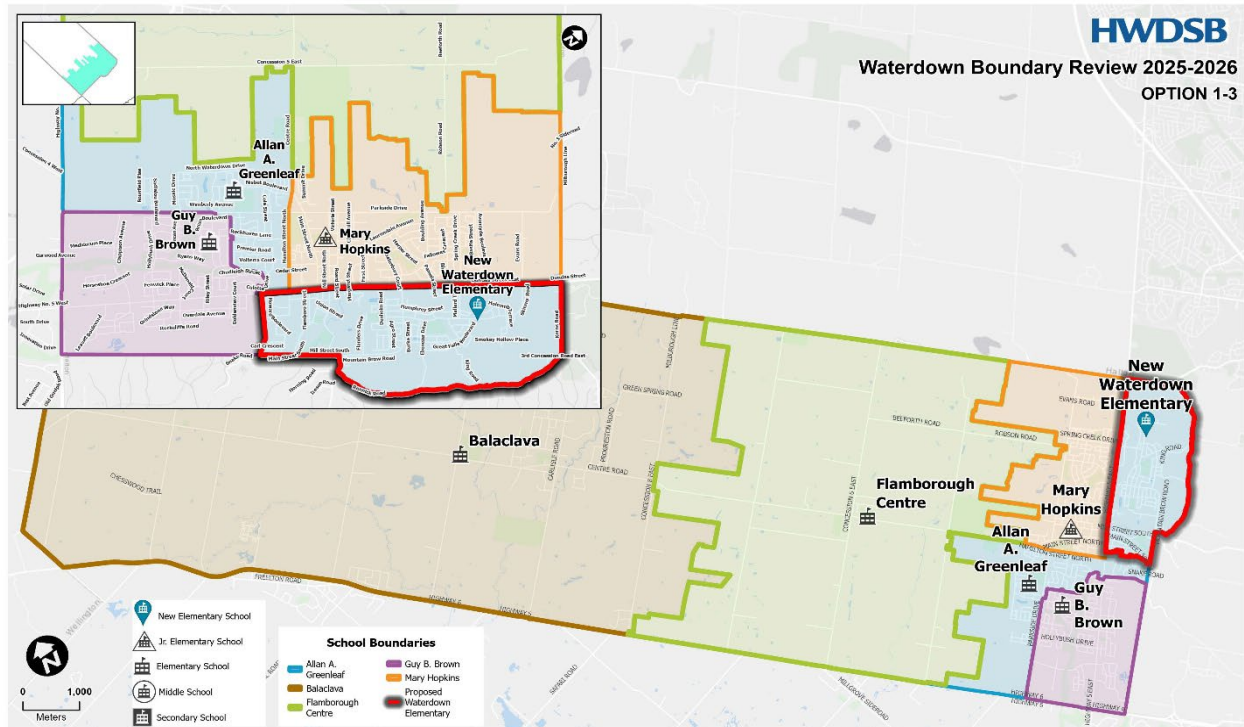


Figure 3: Options 1-3 Proposed Boundary Map

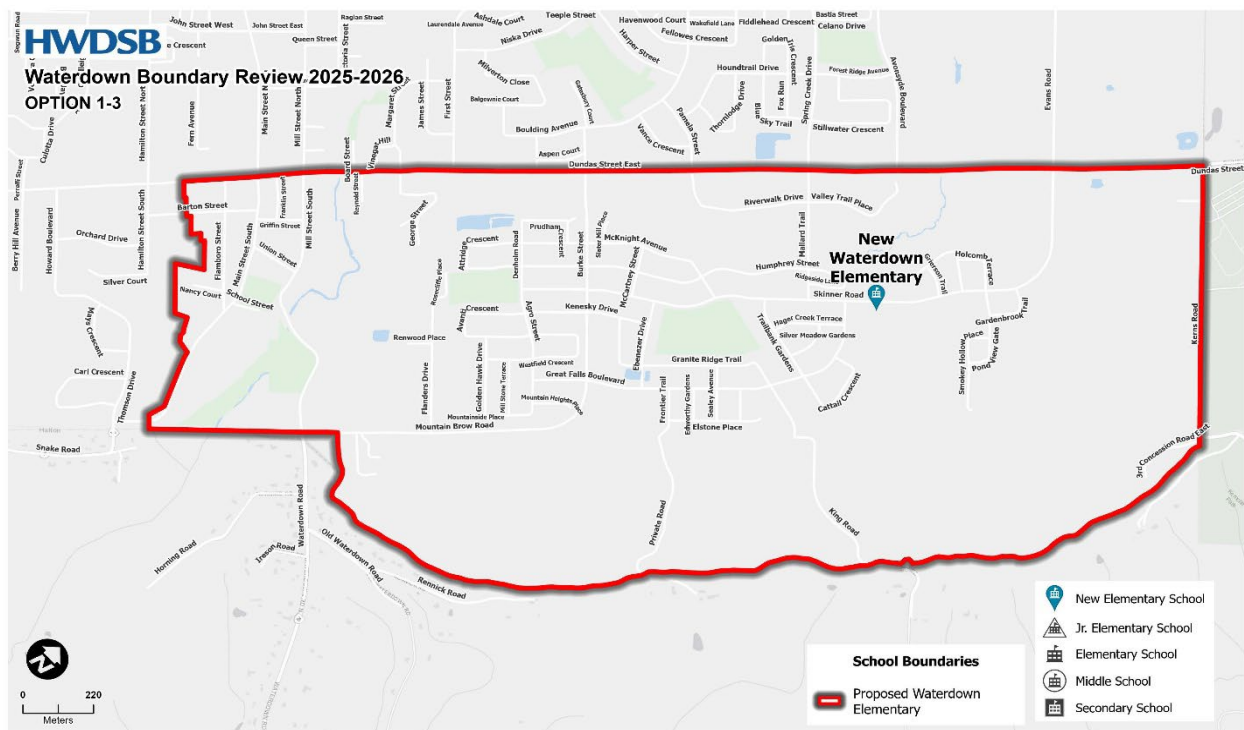


Figure 4: Options 1-3 Proposed Boundary Map- Zoomed

Within Option 1, projected enrolment across most community schools is expected to remain within the optimal utilization range of 90% to 115% by 2030, as illustrated in the projection tables below. This option also addresses current accommodation pressures at Allan A. Greenleaf ES by redirecting new students residing south of Highway 5 from Howard Boulevard to Kerns Road to Mary Hopkins ES until the opening of the new Waterdown Elementary School in the 2027–2028 school year.

Following consultation with the Hamilton-Wentworth Student Transportation Services, this option is anticipated to result in no significant changes to existing busing arrangements within the community.

Table 8: Allan A. Greenleaf ES Option 1 Enrolment and Projections

Allan A. Greenleaf ES									
On the Ground Capacity	Portables	Total Capacity	Program	2025	2026	2027	2028	2029	2030
548	8	732	English	775	753	549	557	599	642
			French	0	0	0	0	0	0
	Portable Capacity		Total	775	753	549	557	599	642
	184		Utilization	141%	137%	100%	102%	109%	117%
			Utilization with Portables	106%	103%	75%	76%	82%	88%

Table 9: Balaclava ES Option 1 Enrolment and Projections

Balaclava ES									
On the Ground Capacity	Portables	Total Capacity	Program	2025	2026	2027	2028	2029	2030
381	0	381	English	312	300	296	291	272	274
			French	0	0	0	0	0	0
	Portable Capacity		Total	312	300	296	291	272	274
	0		Utilization	82%	79%	78%	76%	71%	72%
			Utilization with Portables	82%	79%	78%	76%	71%	72%

Table 10: Flamborough Centre ES Option 1 Enrolment and Projections

Flamborough Centre ES									
On the Ground Capacity	Portables	Total Capacity	Program	2025	2026	2027	2028	2029	2030
243	7	404	English	346	365	186	177	174	163
			French	0	0	0	30	46	75
	Portable Capacity		Total	346	365	186	207	220	238
	161		Utilization	142%	150%	77%	85%	91%	98%
			Utilization with Portables	86%	90%	46%	51%	55%	59%

Table 11: Guy B. Brown ES Option 1 Enrolment and Projections

Guy B. Brown ES									
On the Ground Capacity	Portables	Total Capacity	Program	2025	2026	2027	2028	2029	2030
632	5	747	English	401	406	401	385	371	363
			French	288	296	263	254	231	211
	Portable Capacity		Total	689	703	664	640	602	575
	115		Utilization	109%	111%	105%	101%	95%	91%
			Utilization with Portables	92%	94%	89%	86%	81%	77%

Table 12: Mary Hopkins ES Option 1 Enrolment and Projections

Mary Hopkins ES									
On the Ground Capacity	Portables	Total Capacity	Program	2025	2026	2027	2028	2029	2030
401	5	516	English	327	360	260	268	272	282
			French	119	109	128	116	120	110
	Portable Capacity		Total	446	470	388	384	392	392
	115		Utilization	111%	117%	97%	96%	98%	98%
			Utilization with Portables	86%	91%	75%	74%	76%	76%

Table 13: Waterdown Elementary Option 1 Enrolment and Projections

Waterdown Elementary									
On the Ground Capacity	Portables	Total Capacity	Program	2025	2026	2027	2028	2029	2030
504	0	504	English	0	0	461	482	495	509
			French	0	0	0	0	0	0
	Portable Capacity		Total	0	0	461	482	495	509
	0		Utilization	0%	0%	91%	96%	98%	101%
			Utilization with Portables	0%	0%	91%	96%	98%	101%

Option 2

Option 2 was presented at the second advisory meeting and was created as a result of advisory panel discussion and feedback received through the Boundary Review Engage site. The option includes the following proposed strategies:

2026-2027

- New Junior Kindergarten to grade 4 students south of Highway 5 from Howard Boulevard to Kerns Road redirected to Mary Hopkins ES.

2027-2028

- New Waterdown Elementary School Boundary - South of Highway 5, from Howard Boulevard to Kerns Road. The proposed school boundaries are illustrated in figures 3 and 4. All students located within this boundary to attend the new school.
- Legacy Considerations - Grade 7 and 8s receive the option of staying at current home school (Flamborough Centre ES or Allan A. Greenleaf ES). No Transportation provided for legacy students and younger siblings to attend the new school.
- Regular Track - Mary Hopkins ES retain the grade 5 students within its regular track boundary.
- French Immersion - Mary Hopkins ES retain the grade 5 students within its French Immersion boundary. Grades 6-8 French Immersion program is directed to Flamborough Centre ES, with the students currently at Guy B. Brown ES staying and graduating.

Under Option 2, projected enrolment for most community schools is expected to remain within the optimal utilization range of 90% to 115% by 2030, as shown in the projection tables below. This option also incorporates community feedback by allowing grade 7 and 8 students the choice to graduate at their current school, which is reflected in the enrolment projections.

Similar to Option 1, this strategy alleviates pressures at Allan A. Greenleaf ES by redirecting new students residing south of Highway 5 from Howard Boulevard to Kerns Road to Mary Hopkins ES until the new Waterdown Elementary School opens in the 2027–2028 school year.

Following consultation with the Hamilton-Wentworth Student Transportation Services, this option may require additional buses.

Table 14: Allan A. Greenleaf ES Option 2 Enrolment and Projections

Allan A. Greenleaf ES									
On the Ground Capacity	Portables	Total Capacity	Program	2025	2026	2027	2028	2029	2030
548	8	732	English	775	753	584	580	599	642
			French	0	0	0	0	0	0
	Portable Capacity		Total	775	753	584	580	599	642
	184		Utilization	141%	137%	107%	106%	109%	117%
			Utilization with Portables	106%	103%	80%	79%	82%	88%

Table 15: BalACLava ES Option 2 Enrolment and Projections

Balaclava ES									
On the Ground Capacity	Portables	Total Capacity	Program	2025	2026	2027	2028	2029	2030
381	0	381	English	312	300	296	291	272	274
			French	0	0	0	0	0	0
	Portable Capacity		Total	312	300	296	291	272	274
	0		Utilization	82%	79%	78%	76%	71%	72%
			Utilization with Portables	82%	79%	78%	76%	71%	72%

Table 16: Flamborough Centre ES Option 2 Enrolment and Projections

Flamborough Centre ES									
On the Ground Capacity	Portables	Total Capacity	Program	2025	2026	2027	2028	2029	2030
243	7	404	English	346	365	243	204	174	163
			French	0	0	0	30	46	75
	Portable Capacity		Total	346	365	243	234	220	238
	161		Utilization	142%	150%	100%	96%	91%	98%
			Utilization with Portables	86%	90%	60%	58%	55%	59%

Table 17: Guy B. Brown ES Option 2 Enrolment and Projections

Guy B. Brown ES									
On the Ground Capacity	Portables	Total Capacity	Program	2025	2026	2027	2028	2029	2030
632	5	747	English	401	406	401	385	371	363
			French	288	296	263	254	231	211
	Portable Capacity		Total	689	703	664	640	602	575
	115		Utilization	109%	111%	105%	101%	95%	91%
			Utilization with Portables	92%	94%	89%	86%	81%	77%

Table 18: Mary Hopkins ES Option 2 Enrolment and Projections

Mary Hopkins ES									
On the Ground Capacity	Portables	Total Capacity	Program	2025	2026	2027	2028	2029	2030
401	5	516	English	327	360	260	268	272	282
			French	119	109	128	116	120	110
	Portable Capacity		Total	446	470	388	384	392	392
	115		Utilization	111%	117%	97%	96%	98%	98%
			Utilization with Portables	86%	91%	75%	74%	76%	76%

Table 19: Waterdown Elementary Option 2 Enrolment and Projections

Waterdown Elementary									
On the Ground Capacity	Portables	Total Capacity	Program	2025	2026	2027	2028	2029	2030
504	0	504	English	0	0	369	432	495	509
			French	0	0	0	0	0	0
	Portable Capacity		Total	0	0	369	432	495	509
	0		Utilization	0%	0%	73%	86%	98%	101%
			Utilization with Portables	0%	0%	73%	86%	98%	101%

Option 3

Option 3 was also presented at the second Advisory Panel meeting and was created as a result of advisory panel discussion and feedback received through the Boundary Review Engage site. The option includes the following proposed strategies:

2026-2027

- New Junior Kindergarten to grade 4 students south of Highway 5 from Howard Boulevard to Kerns Road redirected to Mary Hopkins ES.

2027-2028

- New Waterdown Elementary School Boundary - South of Highway 5, from Howard Boulevard to Kerns Road. The proposed school boundaries are illustrated in figures 3 and 4. All students located within this boundary to attend the new school. No legacy considerations.
- Regular Track - Mary Hopkins ES retain the grade 5 students within its regular track boundary.
- French Immersion - Mary Hopkins ES retain the grade 5 students within its French Immersion boundary. Grades 6-8 French Immersion program continues at Guy B. Brown ES.

Option 3 responds to community feedback regarding the viability of the middle school French Immersion program within the community. The option provides the program continuing at Guy B. Brown ES, where larger class sizes in grades 6–8 support high-quality programming for students. As shown in table 23 below, the school has the ability to continue to offer the program with the current portables on site.

This option results in Flamborough Centre ES declining to an enrolment of 163 students (67% utilization) by 2030. Staff can further review enrolment and class size implications at Flamborough Centre ES through the Long-Term Facilities Plan annual planning process in the upcoming year.

Consistent with Options 1 and 2, this strategy alleviates pressures at Allan A. Greenleaf ES by redirecting new JK-4 students residing south of Highway 5 from Howard Boulevard to Kerns Road to Mary Hopkins ES until the new Waterdown Elementary School opens in 2027–2028.

Following consultation with the Hamilton-Wentworth Student Transportation Services, this option is anticipated to result in no significant changes to existing busing arrangements within the community.

Table 20: Allan A. Greenleaf ES Option 3 Enrolment and Projections

Allan A. Greenleaf ES									
On the Ground Capacity	Portables	Total Capacity	Program	2025	2026	2027	2028	2029	2030
548	8	732	English	775	753	549	557	599	642
			French	0	0	0	0	0	0
	Portable Capacity		Total	775	753	549	557	599	642
	184		Utilization	141%	137%	100%	102%	109%	117%
			Utilization with Portables	106%	103%	75%	76%	82%	88%

Table 21: Balaclava ES Option 3 Enrolment and Projections

Balaclava ES									
On the Ground Capacity	Portables	Total Capacity	Program	2025	2026	2027	2028	2029	2030
381	0	381	English	312	300	296	291	272	274
			French	0	0	0	0	0	0
	Portable Capacity		Total	312	300	296	291	272	274
	0		Utilization	82%	79%	78%	76%	71%	72%
			Utilization with Portables	82%	79%	78%	76%	71%	72%

Table 22: Flamborough Centre ES Option 3 Enrolment and Projections

Flamborough Centre ES									
On the Ground Capacity	Portables	Total Capacity	Program	2025	2026	2027	2028	2029	2030
243	7	404	English	346	365	186	177	174	163
			French	0	0	0	0	0	0
	Portable Capacity		Total	346	365	186	177	174	163
	161		Utilization	142%	150%	77%	73%	72%	67%
			Utilization with Portables	86%	90%	46%	44%	43%	40%

Table 23: Guy B. Brown ES Option 3 Enrolment and Projections

Guy B. Brown ES									
On the Ground Capacity	Portables	Total Capacity	Program	2025	2026	2027	2028	2029	2030
632	5	747	English	401	406	401	385	371	363
			French	288	296	263	284	277	287
	Portable Capacity		Total	689	703	664	669	648	650
	115		Utilization	109%	111%	105%	106%	102%	103%
			Utilization with Portables	92%	94%	89%	90%	87%	87%

Table 24: Mary Hopkins ES Option 3 Enrolment and Projections

Mary Hopkins ES									
On the Ground Capacity	Portables	Total Capacity	Program	2025	2026	2027	2028	2029	2030
401	5	516	English	327	360	260	268	272	282
			French	119	109	128	116	120	110
	Portable Capacity		Total	446	470	388	384	392	392
	115		Utilization	111%	117%	97%	96%	98%	98%
			Utilization with Portables	86%	91%	75%	74%	76%	76%

Table 25: Waterdown Option 3 Enrolment and Projections

Waterdown Elementary									
On the Ground Capacity	Portables	Total Capacity	Program	2025	2026	2027	2028	2029	2030
504	0	504	English	0	0	461	482	495	509
			French	0	0	0	0	0	0
	Portable Capacity		Total	0	0	461	482	495	509
	0		Utilization	0%	0%	91%	96%	98%	101%
			Utilization with Portables	0%	0%	91%	96%	98%	101%

Option 4

Following feedback and discussions during the second Advisory Panel meeting, Option 4 was developed and shared with panel members for review prior to the public meeting. This option incorporates the following proposed strategies:

2026-2027

- New Junior Kindergarten to grade 4 students south of Highway 5 from Howard Boulevard to Kerns Road redirected to Mary Hopkins ES.

2027-2028

- New Waterdown Elementary School Boundary- South of Highway 5, from 1, 30 and 40 Hamilton Street South to Kerns Road. The proposed school boundaries are illustrated in figures 5 and 6 below. All students located within this boundary to attend the new school.
- Legacy Considerations - Grade 7 and 8s receive the option of staying at current home school (Flamborough Centre ES or Allan A. Greenleaf ES). No Transportation provided for legacy students and siblings to attend the new school.
- Regular Track - Mary Hopkins ES retain the grade 5 students within its regular track boundary.
- French Immersion - Mary Hopkins ES retain the grade 5 students within its French Immersion boundary. Grades 6-8 French Immersion program continues at Guy B. Brown ES.

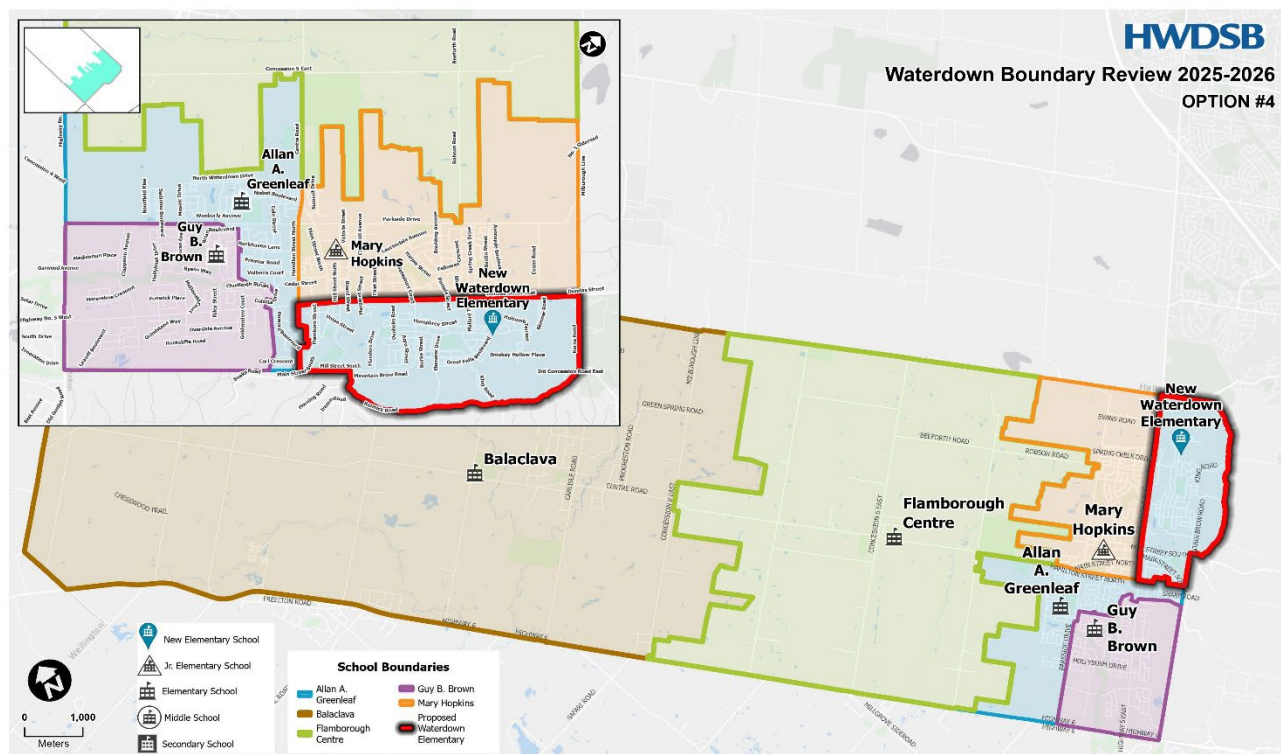


Figure 5: Option 4 Proposed Boundary Map

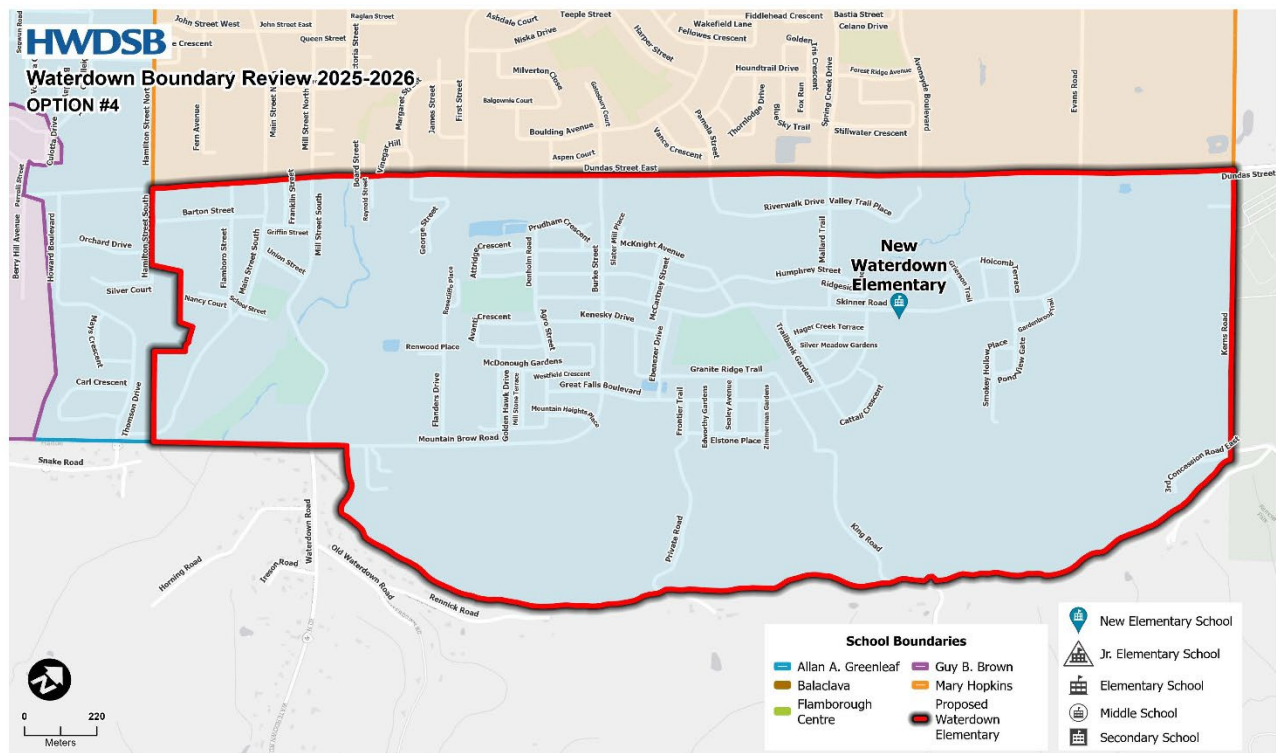


Figure 6: Option 4 Proposed Boundary Map- Zoomed

Option 4 reflects community feedback supporting the inclusion of the area south of Highway 5—from Howard Boulevard to the west side of Hamilton Street South, inclusive of 50 Hamilton Street South—within Allan A. Greenleaf ES attendance boundary. This area was previously part of the school boundary prior to the 2023–2024 Temporary Accommodation Strategy.

Similar to Option 3, this option also addresses the sustainability of French Immersion programming, with the grade 6–8 program continuing at Guy B. Brown ES.

Consistent with Options 1-3, Option 4 alleviates pressures at Allan A. Greenleaf ES by redirecting new students residing south of Highway 5 from Howard Boulevard to Kerns Road to Mary Hopkins ES until the new Waterdown Elementary School opens in 2027–2028.

Following consultation with the Hamilton-Wentworth Student Transportation Services, this option is anticipated to result in no significant changes to existing busing arrangements within the community.

Table 26: Allan A. Greenleaf ES Option 4 Enrolment and Projections

Allan A. Greenleaf ES									
On the Ground Capacity	Portables	Total Capacity	Program	2025	2026	2027	2028	2029	2030
548	8	732	English	775	758	601	597	616	655
			French	0	0	0	0	0	0
	Portable Capacity		Total	775	758	601	597	616	655
	184		Utilization	141%	138%	110%	109%	112%	120%
			Utilization with Portables	106%	103%	82%	82%	84%	90%

Table 27: Balaclava ES Option 4 Enrolment and Projections

Balaclava ES									
On the Ground Capacity	Portables	Total Capacity	Program	2025	2026	2027	2028	2029	2030
381	0	381	English	312	300	296	291	272	274
			French	0	0	0	0	0	0
	Portable Capacity		Total	312	300	296	291	272	274
	0		Utilization	82%	79%	78%	76%	71%	72%
			Utilization with Portables	82%	79%	78%	76%	71%	72%

Table 28: Flamborough Centre ES Option 4 Enrolment and Projections

Flamborough Centre ES									
On the Ground Capacity	Portables	Total Capacity	Program	2025	2026	2027	2028	2029	2030
243	7	404	English	346	365	243	204	174	163
			French	0	0	0	0	0	0
	Portable Capacity		Total	346	365	243	204	174	163
	161		Utilization	142%	150%	100%	84%	72%	67%
			Utilization with Portables	86%	90%	60%	51%	43%	40%

Table 29: Guy B. Brown ES Option 4 Enrolment and Projections

Guy B. Brown ES									
On the Ground Capacity	Portables	Total Capacity	Program	2025	2026	2027	2028	2029	2030
632	5	747	English	401	406	401	385	371	363
			French	288	296	263	284	277	287
	Portable Capacity		Total	689	703	664	669	648	650
	115		Utilization	109%	111%	105%	106%	102%	103%
			Utilization with Portables	92%	94%	89%	90%	87%	87%

Table 30: Mary Hopkins ES Option 4 Enrolment and Projections

Mary Hopkins ES									
On the Ground Capacity	Portables	Total Capacity	Program	2025	2026	2027	2028	2029	2030
401	5	516	English	327	355	260	268	272	282
			French	119	109	128	116	120	110
	Portable Capacity		Total	446	465	388	384	392	392
	115		Utilization	111%	116%	97%	96%	98%	98%
			Utilization with Portables	86%	90%	75%	74%	76%	76%

Table 31: Waterdown Elementary Option 4 Enrolment and Projections

Waterdown Elementary									
On the Ground Capacity	Portables	Total Capacity	Program	2025	2026	2027	2028	2029	2030
504	0	504	English	0	0	352	415	478	496
			French	0	0	0	0	0	0
	Portable Capacity		Total	0	0	352	415	478	496
	0		Utilization	0%	0%	70%	82%	95%	98%
			Utilization with Portables	0%	0%	70%	82%	95%	98%

Staff Recommended Option

Following the assessment of all 4 options using the evaluation criteria, and through discussions at the Advisory Panel meetings, reviewing public feedback on Engage and through the public meeting, the Advisory Panel came to a consensus, and the staff recommended option includes the following:

2026-2027

- New Junior Kindergarten to grade 4 students south of Highway 5 from Howard Boulevard to Kerns Road redirected to Mary Hopkins ES.
- Mary Hopkins ES retain the grade 5 students within its regular track boundary.

2027-2028

- New Waterdown Elementary School Boundary - South of Highway 5, from 1, 30 and 40 Hamilton Street South to Kerns Road. The proposed school boundaries are illustrated in figures 5 and 6. All students located within this boundary to attend the new school.
- Legacy Considerations - Grade 7 and 8s receive the option of staying at current home school (Flamborough Centre ES or Allan A. Greenleaf ES). No Transportation provided for legacy students and siblings to attend the new school.
- French Immersion - Mary Hopkins ES retain the grade 5 students within its French Immersion boundary. Grades 6-8 French Immersion program continues at Guy B. Brown ES.

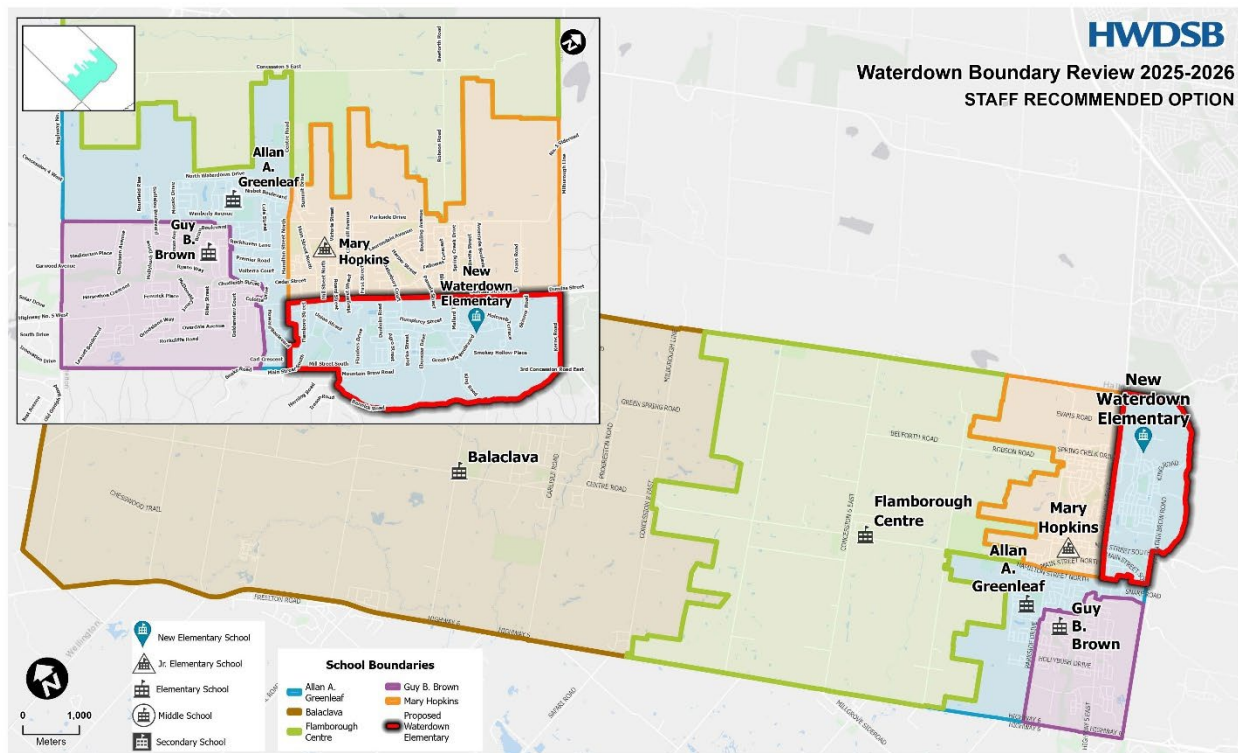


Figure 7: Staff Recommended Option Map

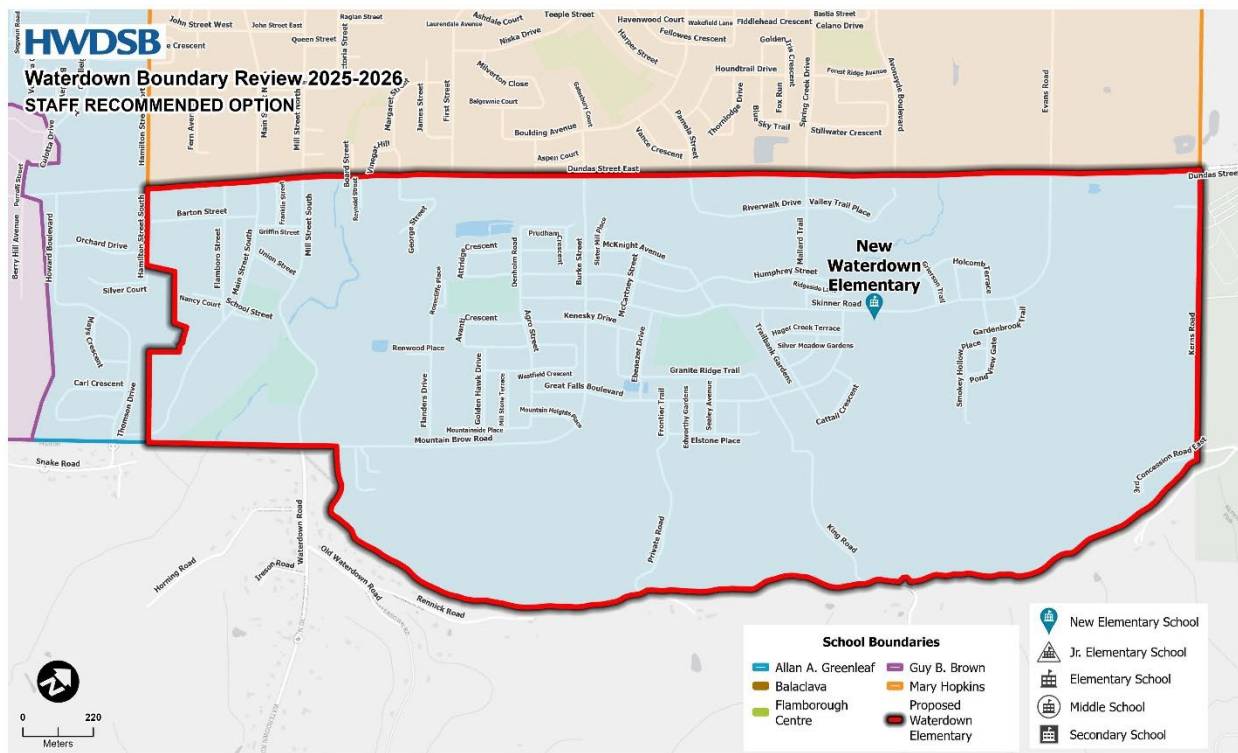


Figure 8: Staff Recommended Option Map Zoomed

The staff recommended option incorporates the new Waterdown Elementary School boundary and accommodation strategies outlined in Option 4, with the addition of an extra measure for

the 2026-2027 school year. Community feedback highlighted concerns that current grade 4 students at Mary Hopkins ES, living south of Highway 5 within the proposed new boundary, would otherwise attend three different schools in three years under the original recommendations. To minimize disruption, the Staff Recommended Option provides that Mary Hopkins ES will retain grade 5 classes one year earlier, beginning in 2026–2027.

Under this option, projected enrolment for most community schools remains within the optimal utilization range of 90% to 110% by 2030, as shown in the projection tables below. While Mary Hopkins ES will experience some accommodation pressure in 2026–2027, this can be mitigated through the placement of an additional portable classroom on site.

Table 32: Allan A. Greenleaf ES Staff Recommended Option Enrolment and Projections

Allan A. Greenleaf ES									
On the Ground Capacity	Portables	Total Capacity	Program	2025	2026	2027	2028	2029	2030
548	8	732	English	775	758	601	597	616	655
			French	0	0	0	0	0	0
	Portable Capacity		Total	775	758	601	597	616	655
	184		Utilization	141%	138%	110%	109%	112%	120%
			Utilization with Portables	106%	103%	82%	82%	84%	90%

Table 33: Balaclava ES Staff Recommended Option Enrolment and Projections

Balaclava ES									
On the Ground Capacity	Portables	Total Capacity	Program	2025	2026	2027	2028	2029	2030
381	0	381	English	312	300	296	291	272	274
			French	0	0	0	0	0	0
	Portable Capacity		Total	312	300	296	291	272	274
	0		Utilization	82%	79%	78%	76%	71%	72%
			Utilization with Portables	82%	79%	78%	76%	71%	72%

Table 34: Flamborough Centre ES Staff Recommended Option Enrolment and Projections

Flamborough Centre ES									
On the Ground Capacity	Portables	Total Capacity	Program	2025	2026	2027	2028	2029	2030
243	7	404	English	346	295	243	204	174	163
			French	0	0	0	0	0	0
	Portable Capacity		Total	346	295	243	204	174	163
	161		Utilization	142%	121%	100%	84%	72%	67%
			Utilization with Portables	86%	73%	60%	51%	43%	40%

Table 35: Guy B. Brown ES Staff Recommended Option Enrolment and Projections

Guy B. Brown ES									
On the Ground Capacity	Portables	Total Capacity	Program	2025	2026	2027	2028	2029	2030
632	5	747	English	401	406	401	385	371	363
			French	288	296	263	284	277	287
	Portable Capacity		Total	689	703	664	669	648	650
	115		Utilization	109%	111%	105%	106%	102%	103%
			Utilization with Portables	92%	94%	89%	90%	87%	87%

Table 36: Mary Hopkins ES Staff Recommended Option Enrolment and Projections

Mary Hopkins ES									
On the Ground Capacity	Portables	Total Capacity	Program	2025	2026	2027	2028	2029	2030
401	5	516	English	327	425	260	268	272	282
			French	119	109	128	116	120	110
	Portable Capacity		Total	446	535	388	384	392	392
	115		Utilization	111%	133%	97%	96%	98%	98%
			Utilization with Portables	86%	104%	75%	74%	76%	76%

Table 37: Waterdown Elementary Staff Recommended Option Enrolment and Projections

Waterdown Elementary									
On the Ground Capacity	Portables	Total Capacity	Program	2025	2026	2027	2028	2029	2030
504	0	504	English	0	0	352	415	478	496
			French	0	0	0	0	0	0
	Portable Capacity		Total	0	0	352	415	478	496
	0		Utilization	0%	0%	70%	82%	95%	98%
			Utilization with Portables	0%	0%	70%	82%	95%	98%

Community Feedback

Following the initiation of the Boundary Review and communication to the affected school communities in September 2025, staff provided public access to the [Waterdown Boundary Review](#) project on the HWDSB Engage platform. This page allowed for community members to provide feedback publicly or privately, review documents, and ask questions. All feedback received publicly and privately was reviewed and summarized by the Research and Analytics department and shared with the community through the Advisory Panel meetings and the public meeting. The Engage website for the Boundary Review closed December 19, 2025.

For a complete summary of the community feedback received throughout the process, including what was collected through the public open house, please refer to the New Waterdown Elementary School Boundary Review Summary of Public Feedback report in Appendix B.

Conclusion

The Waterdown Boundary Review process has been a comprehensive and collaborative effort to address the significant enrolment pressures and future growth within the Waterdown community. Through detailed analysis of enrolment projections, facility capacities, and community feedback, the review identified strategies that balance accommodation needs while minimizing disruption for families. The Staff Recommended Option reflects the consensus of the Advisory Panel and incorporates key considerations raised during public consultation, including maintaining program viability, limiting student moves, and ensuring equitable access to schools.

By establishing the boundary for the new Waterdown Elementary School and implementing interim measures for the 2026–2027 school year, the Staff Recommended Option will aid in alleviating current over utilization at Allan A. Greenleaf ES and support sustainable enrolment across all affected schools. These changes will ensure that the majority of schools operate within optimal utilization ranges by 2030, while preserving the integrity of French Immersion programming and accommodating legacy students where possible.

Next Steps

The following outlines the final steps in the Waterdown Boundary Review process:

1. Communication to School Communities- Following the Board of Trustees' final decision, a comprehensive communication plan will be implemented to inform all affected school communities. This will include detailed information on boundary changes, timelines, and available supports for families.
2. Formation of a Transition Committee - A Transition Committee will be established, led by the Superintendent and school Principals. The committee will engage impacted communities to provide input, advice, and recommendations aimed at ensuring a smooth transition for students and families.
3. Temporary Accommodation - To provide flexibility in accommodating new students south of Highway 5 during the 2026–2027 school year, the Board will explore the potential placement of a portable classroom at Mary Hopkins ES.
4. Ongoing enrolment monitoring - Planning staff will continue annual reviews of enrolment data to monitor the impact of boundary changes across all affected schools. These reviews will inform any necessary adjustments to maintain balanced utilization and program viability through the HWDSB Long-Term Accommodation Plan.