

Gatestone and Shannen Koostachin Boundary Review

Public Meeting
December 5, 2023

We acknowledge our presence on ancestral Anishinaabe and Haudenosaunee Confederacy land as determined by the Dish with One Spoon treaty.

The intent of this agreement is for all nations sharing this territory to do so responsibly, respectfully and sustainably in perpetuity.

We respect the longstanding relationships with the local Indigenous communities, the Mississaugas of the Credit First Nation and the Six Nations of the Grand River.

Welcome & Introductions

curiosity

creativity

possibility

- Staff Presentation:
 - Boundary Review Process
 - Purpose of this boundary review and background information
 - Proposed boundary change and implementation
- Community Feedback and Round Table Discussion
- Wrap Up and Next Steps

- Short presentation
- Questions – bring them to the small group discussions
- Table Discussions
 - Facilitated and recorded, used to inform Board Report
- Other ways to receive public feedback
 - Feedback Wall and Wall Maps
 - Online
 - planning@hwdsb.on.ca
 - visit <https://www.engagehwdsb.ca/>
- Information on Board and school websites

Please follow along at:

hwdsb.info/Shannen-Gatestone-Review

What is a Boundary Review?

A public review process undertaken to create or modify the boundary of one or more schools. A school boundary may require modification due to:

- New school construction
- Balancing enrolments between existing schools
- Program changes

Advisory Panel

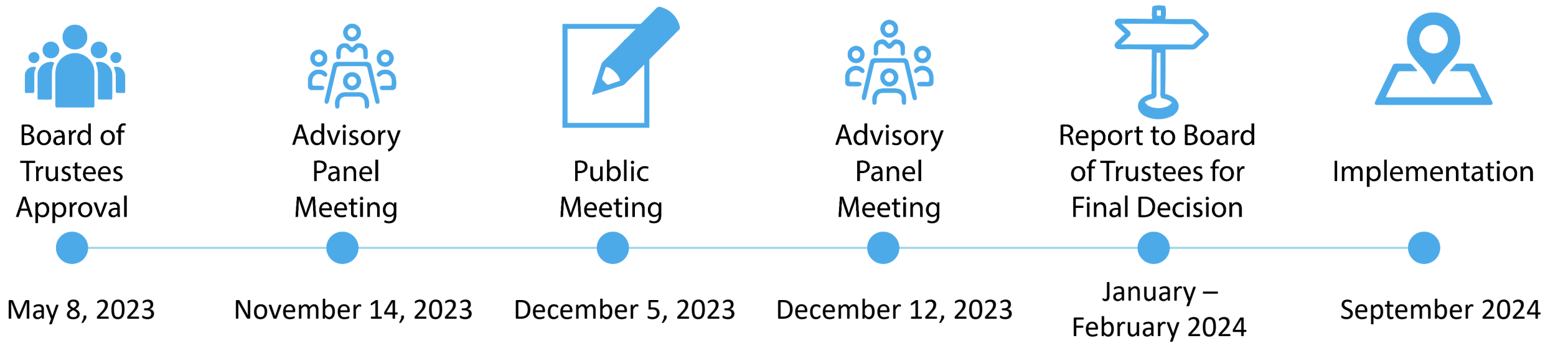
- Gatestone Parent Council Representative:
 - Paul Uzarowski
 - Jennifer Sarkis
- Shannen Koostachin Parent Council Representative:
 - Kylie Gallagher
 - Saima Mirza

Resource Staff

- Trustee, Wards 6 & 9: Kathy Archer
- Superintendent of Student Achievement: Gerry Smith
- Manager Planning, Accommodation & Rentals: Ellen Warling
- Planner: Ian Hopkins
- General Manager Hamilton Wentworth Student Transportation Services: Sherry Roswell
- Research Officer: Lorraine Valmadrid
- Gatestone Principal: Dianne Barlow
- Gatestone Vice Principal: Kristy Luker
- Shannen Koostachin Principal: Tricia Nelson
- Shannen Koostachin Vice Principal: Louise vander Put

The mandate of the advisory panel is to provide feedback and advice, through the process of discussions and inquiries about HWDSB recommendations and/or information. This includes, but is not limited to, reviewing Boundary Review guiding principles and engaging community voice (e.g., public meeting).

Boundary Review Timelines



curiosity

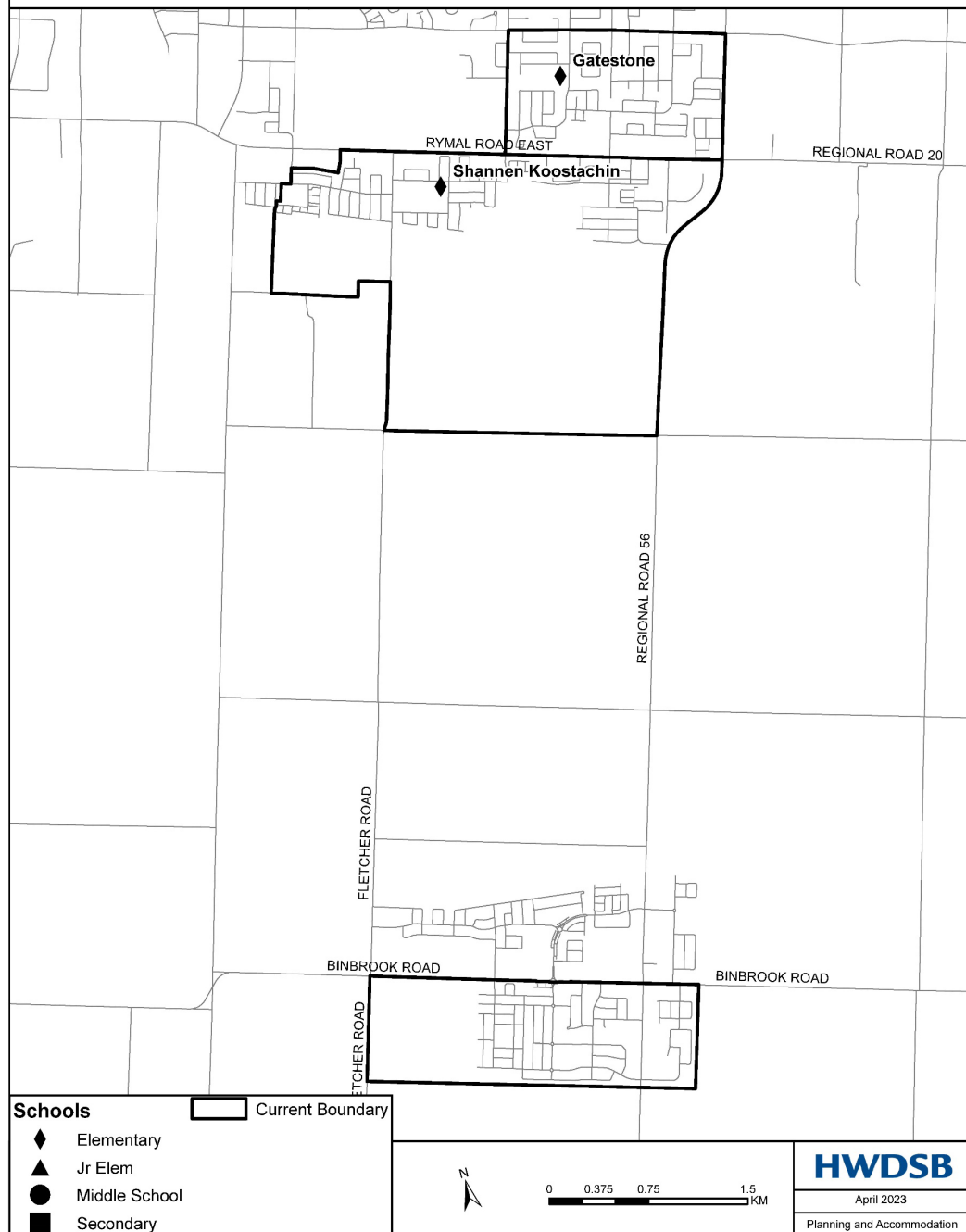
creativity

possibility

Receive community input on establishing a new boundary for Gatestone and Shannen Koostachin

Short-term goal: Alleviate increasing accommodation pressure at Shannen Koostachin due to residential development. Utilize existing space at Gatestone.

Long-term goal: Each school operating within the optimal utilization range of 90%-110% to ensure equitable access to schools/programming.

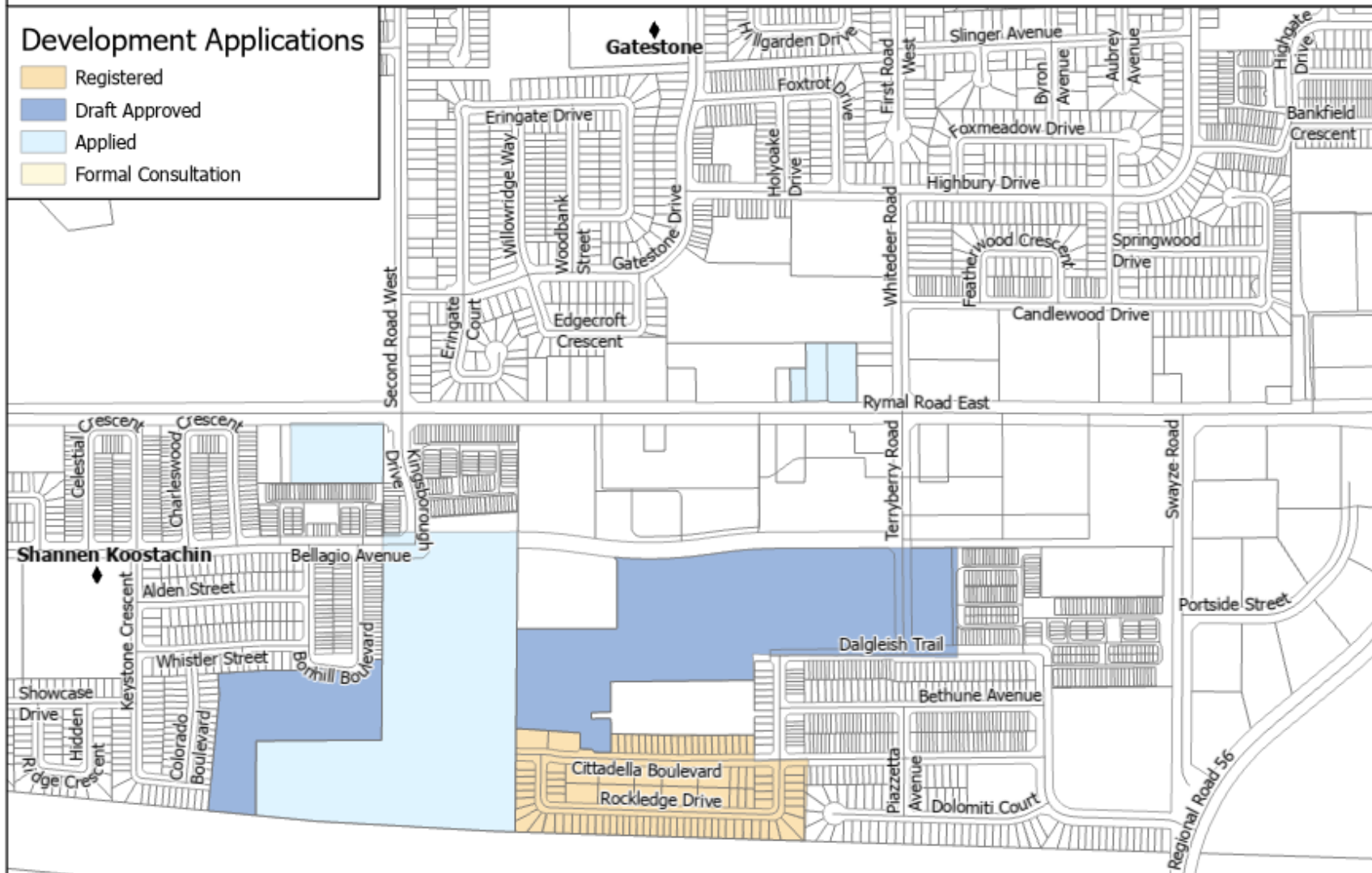


Area History

- 2012-13 – Gatestone & Mount Albion boundary review. Portion of Gatestone boundary directed to Mount Albion
- 2017-2018 – Summit Park Boundary review: included Billy Green, Janet Lee and Tapleytown. Purpose to create new boundary for Shannen Koostachin school.
- 2018-2019 – Bellmoore and Shannen Koostachin boundary review. Purpose to redirect new students from south Binbrook to Shannen Koostachin until a permanent accommodation solution (New school in Binbrook)

Development Applications

- Registered
- Draft Approved
- Applied
- Formal Consultation



Enrolment Growth Due to Residential Development

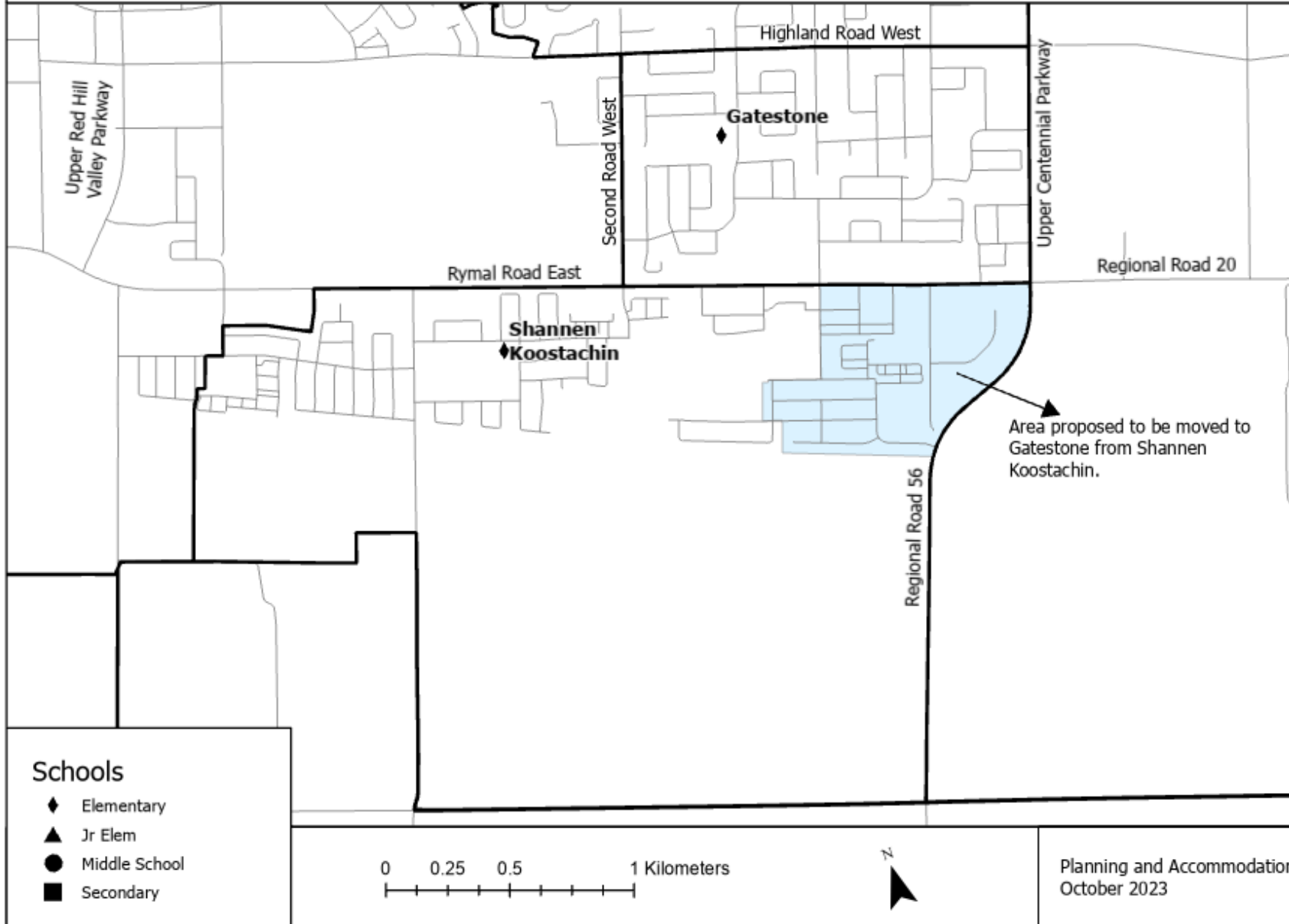
- 85 single family & 88 townhomes registered & under construction.
- 350 single family, 390 townhomes and 227 apartment buildings in application phase south of Rymal Road.



School	OTG		Current Enrolment	Projected Enrolment				
			2023	2024	2025	2026	2027	2028
Shannen Koostachin	599	Enrolment	641	649	658	670	689	700
		Holding Students	194	207	215	262	303	345
		Total Enrolment	835	856	873	932	992	1045
		Utilization	139%	143%	146%	156%	166%	174%

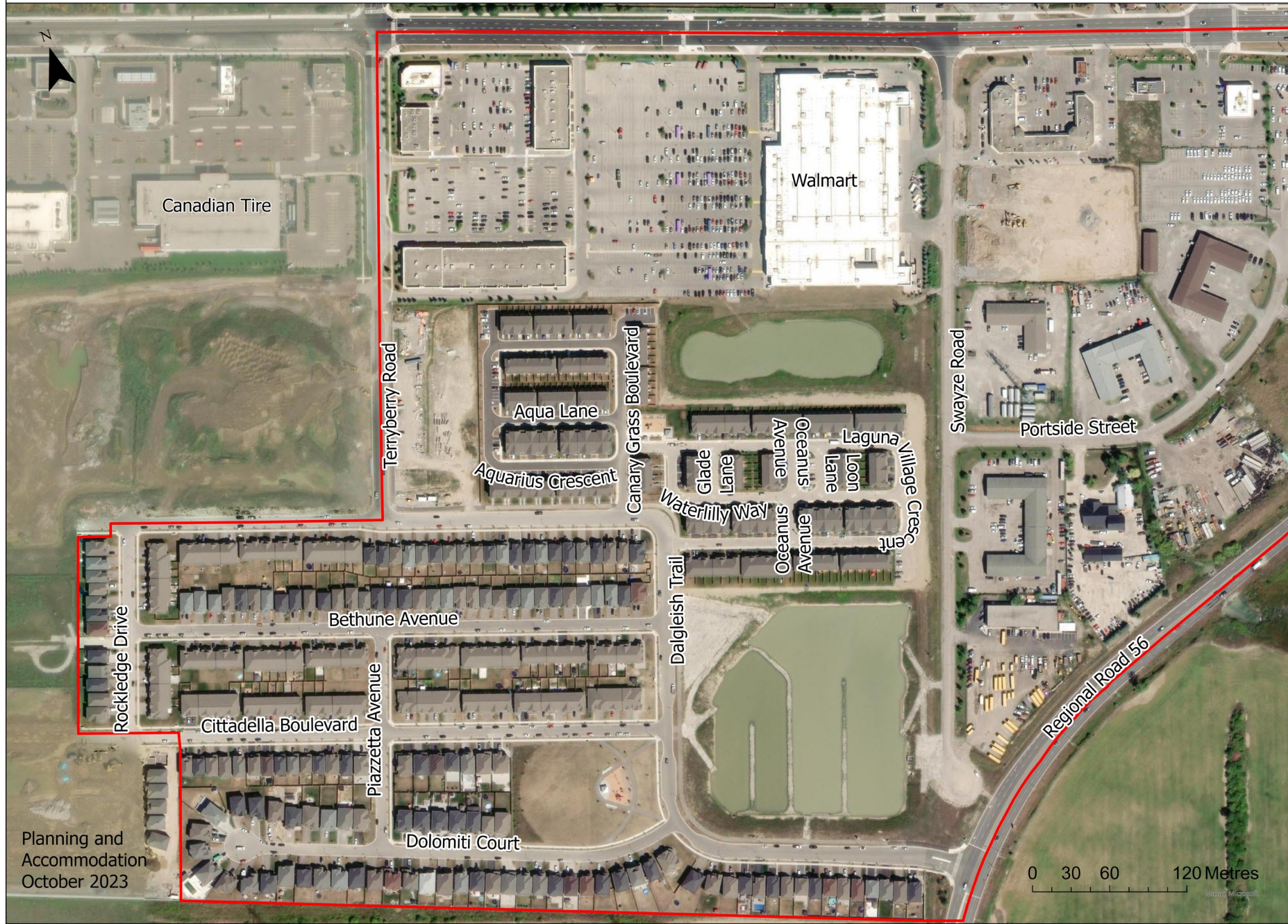
School	OTG		Current Enrolment	Projected Enrolment				
			2023	2024	2025	2026	2027	2028
Gatestone	582	Enrolment	521	508	495	478	476	478
		Utilization	90%	87%	85%	82%	82%	82%

- Currently, 9 portables at Shannen Koostachin
- OTG: On the ground capacity – Ministry of Education calculated capacity of a school based on instructional space count and loading



Proposed Boundary Change

- Proposed portion of Shannen Koostachin boundary moved to Gatestone Elementary School.
- Approximately 170 students reside in the area.



School	OTG		Current Enrolment	Projected Enrolment				
			2023	2024	2025	2026	2027	2028
Shannen Koostachin	599	Enrolment	641	480	489	502	522	535
		Holding Students	194	207	215	262	303	345
		Total Enrolment	835	688	703	764	825	879
		Utilization	139%	115%	117%	128%	138%	147%

School	OTG		Current Enrolment	Projected Enrolment				
			2023	2024	2025	2026	2027	2028
Gatestone	582	Enrolment	521	676	665	646	642	644
		Utilization	90%	116%	114%	111%	110%	111%

- Projected 2-3 portables at Gatestone in 2024
- OTG: On the ground capacity – Ministry of Education calculated capacity of a school based on instructional space count and loading

Propose the following implementation:

- September 2024 implementation
- All current out of catchment students at Gatestone will remain at Gatestone
- Boundary change exemptions – current grade 7s may remain at Shannen Koostachin
- Transition committee is formed after boundary change by Superintendent of Student Achievement and Principals

Gatestone:

- Currently has 1 full-size bus run, 1 mini-size bus run and 1 mini-van
- 3 additional full-size bus runs would be required
- All students in proposed boundary change area will receive transportation

Shannen Koostachin:

- No change in bussing for existing students
- Potential reduction of 3 buses

Acknowledge:

- Traffic, congestion and student safety during drop off and pick up times.
- Additional portables on site and loss of green space.
- Impacts on out of catchment students.
- Impacts on transportation.
- Impacts on students enrolled in before and after care being potentially moved to Gatestone.
- Impacts on siblings of grade 7 students remaining at Shannen Koostachin.

Feedback

curiosity

creativity

possibility



ROUND TABLE
DISCUSSION



ASK RESOURCE
STAFF



FEEDBACK
WALL

ENGAGE
HWDSB

VISIT ENGAGE
HWDSB WEBSITE

- Join a group. If group is full, join another.
- Each group will have a facilitator
- Groups will discuss two (2) questions
- Facilitators will record your comments
- Resource Staff are available to answer questions
- 30 minutes for discussion
- After discussion, wrap up

- Feedback from tables – something new, not shared during the staff presentation

- Community members can provide feedback online by visiting <https://www.engagehwdsb.ca/>
- Next advisory Panel meeting is December 12, 2023 at 6 pm at Gatestone – Learning Commons

THANK YOU