

Gatestone and Shannen Koostachin Boundary Review

Advisory Panel Meeting #1
November 14, 2023

We acknowledge our presence on ancestral Anishinaabe and Haudenosaunee Confederacy land as determined by the Dish with One Spoon treaty.

The intent of this agreement is for all nations sharing this territory to do so responsibly, respectfully and sustainably in perpetuity.

We respect the longstanding relationships with the local Indigenous communities, the Mississaugas of the Credit First Nation and the Six Nations of the Grand River.

- Welcome and Introductions
- Boundary Review Process
 - What is a boundary review
 - Guiding principles
 - Policy and Procedure
- Purpose of this boundary review and background information
- Proposed boundary change and implementation
- Round Table Discussion
- Review of Public Meeting
- Next Steps

Welcome & Introductions

11/14/2023

curiosity

creativity

possibility

What is a Boundary Review?

A public review process undertaken to create or modify the boundary of one or more schools. A school boundary may require modification due to:

- New school construction
- Balancing enrolments between existing schools
- Program changes

Boundary review will follow HWDSB's Boundary Review [Policy](#) and [Procedure](#).

All information presented will be posted on the Board website:
<http://www.hwdsb.on.ca/about/school-renewal/boundary-reviews/>

- Address the short- and long-term accommodation requirements of the impacted communities in a timely manner;
- Be mindful of the best and most prudent use of all resources available to HWDSB;
- Adhere to the guiding principles as defined in the Long-Term Facilities Master Plan (LTFMP) including optimal school capacity, grade organization, transportation, facility requirements, site size and the balance between English and French Immersion students in dual track schools
- Consult with the impacted school communities
- Be mindful of the distance to the nearest school and the ability for students to safely travel to school

HWDSB LTFMP Guiding Principles - Elementary

- School Capacity – optimal school capacity would be 450 to 650 students, which creates two to three classes for each grade.
- School Grade/Organization – Kindergarten to Grade 8 facilities.
- School Site Size – optimal elementary school site includes play fields, parking lot and building. For new site acquisition, optimal size approximately 6 acres and for existing schools is based on local circumstances.
- In dual track schools, enrolment between French Immersion and English track should ensure that the balance supports ideal program delivery. i.e. There should be enough French Immersion enrolment to support a successful program but should not exceed 60%.

Advisory Panel

- Up to two representatives from each affected school. Representatives (School Council).
- Mandate: provide feedback and advice, through the process of discussions and inquiries about HWDSB recommendations and/or information. This includes, but is not limited to, reviewing Boundary Review guiding principles and engaging community voice (e.g., public meeting).

Resource Staff

- Chair: Superintendent of Student Achievement
- Resource Staff:
 - Planning and Accommodation staff member.
 - Trustee(s) of schools affected.
 - Principals of schools affected.

The Boundary Review Advisory Panel Meeting (minimum 2)

- Open for public observation but not participation
- Explain process and rationale for change
- Initial recommended boundary change(s).
- Enrolment & facility utilization impacts.
- Transportation impacts.
- Implementation considerations including phasing in of a boundary change, financial impacts, timelines, and temporary and permanent status of the boundary change.
- Community consultation.

Public Meeting (minimum 1)

- Chaired by Superintendent of Student Achievement with support of resource staff.
- Review same information as advisory panel meetings.
- Allow community an opportunity to provide input regarding the recommendation(s) and/or boundary information.
- The Superintendent of Student Achievement and the Planning & Accommodation department will review community and advisory panel feedback and create a report with recommendation(s).

HWDSB Boundary Review Projected Timelines



Board of
Trustees
Approval
(LTFMP Schedule)

May 8, 2023

11/14/2023



Advisory
Panel
Meeting

Nov 14 & Dec 12, 2023

Revised to Tuesday December 5,
2023



Public
Consultation

~~Nov 28, 2023~~



Report to
Board of
Trustees for
Final Decision

Jan-Feb 2024



Implementation

September 2024

curiosity

creativity

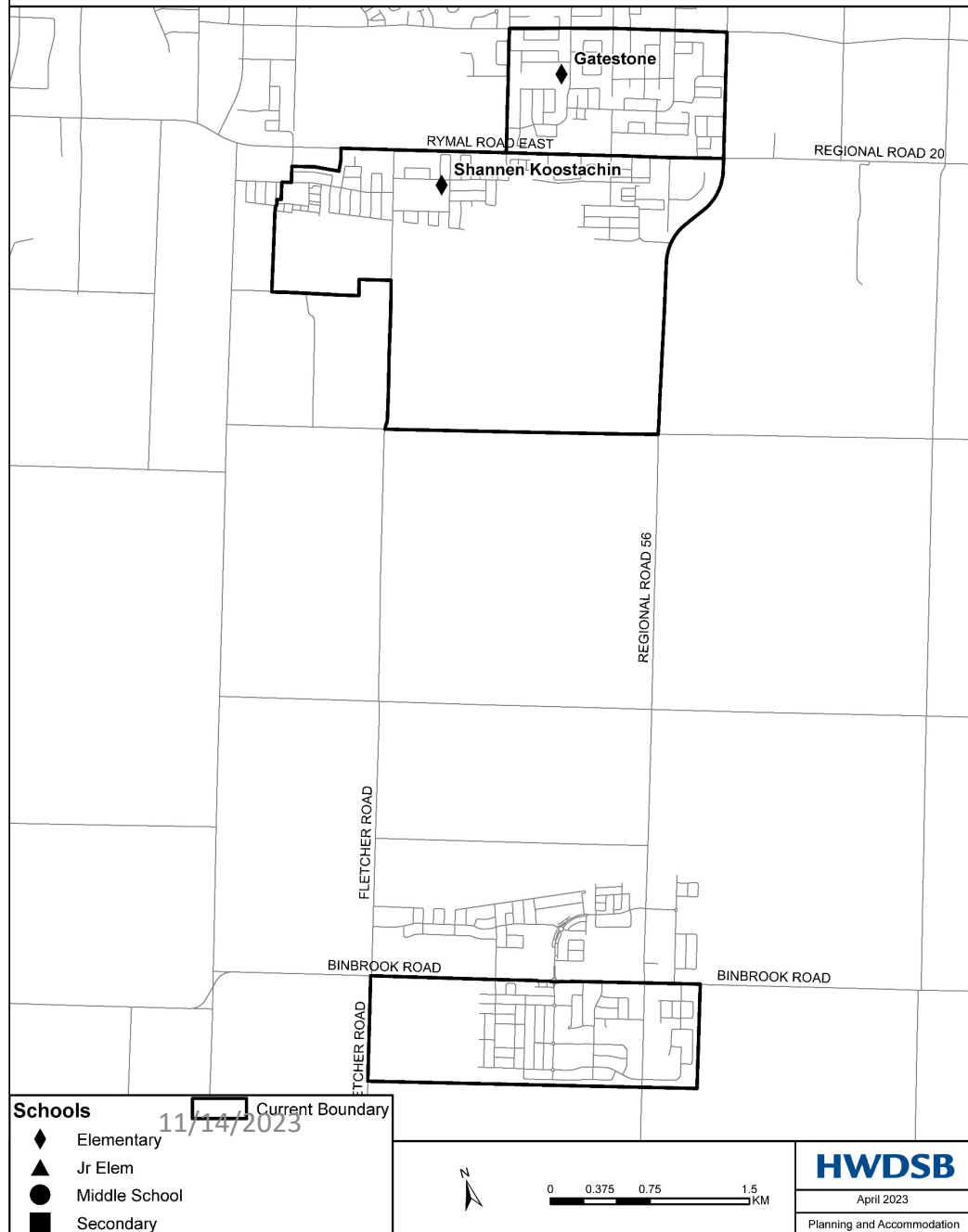
possibility

Purpose of Gatestone/Shannen Koostachin Boundary Review

Establish a new boundary for Gatestone and Shannen Koostachin

Short-term goal: Alleviate increasing accommodation pressure at Shannen Koostachin due to residential development. Utilize existing space at Gatestone.

Long-term goal: Each school operating within the optimal utilization range of 90%-115% to ensure equitable access to schools/programming.



Area History

- 2012-13 – Gatestone & Mount Albion boundary review. Portion of Gatestone boundary directed to Mount Albion
- 2017-2018 – Summit Park Boundary review: included Billy Green, Janet Lee and Tapleytown. Purpose to create new boundary for Shannen Koostachin school.
- 2018-2019 – Bellmoore and Shannen Koostachin boundary review. Purpose to redirect new students to south Binbrook to Shannen Koostachin until a permanent accommodation solution (New school in Binbrook)

School	OTG		Historic Enrolment		Current Enrolment	Projected Enrolment				
			2021	2022	2023	2024	2025	2026	2027	2028
Shannen Koostachin	599	Enrolment	563	585	641	649	658	670	689	700
		Holding Students	143	192	194	207	215	262	303	345
		Total Enrolment	706	777	835	856	873	932	992	1045
		Utilization	118%	130%	139%	143%	146%	156%	166%	174%
		Excess/Deficit Pupil Places	-107	-178	-236	-257	-274	-333	-393	-446

School	OTG		Historic Enrolment		Current Enrolment	Projected Enrolment				
			2021	2022	2023	2024	2025	2026	2027	2028
Gatestone	582	Enrolment	528	532	521	508	495	478	476	478
		Utilization	91%	91%	90%	87%	85%	82%	82%	82%
		Excess/Deficit Pupil Places	54	50	61	74	87	104	106	104

- Currently, 9 portables at Shannen Koostachin
- OTG: On the ground capacity – Ministry of Education calculated capacity of a school based on instructional space count and loading

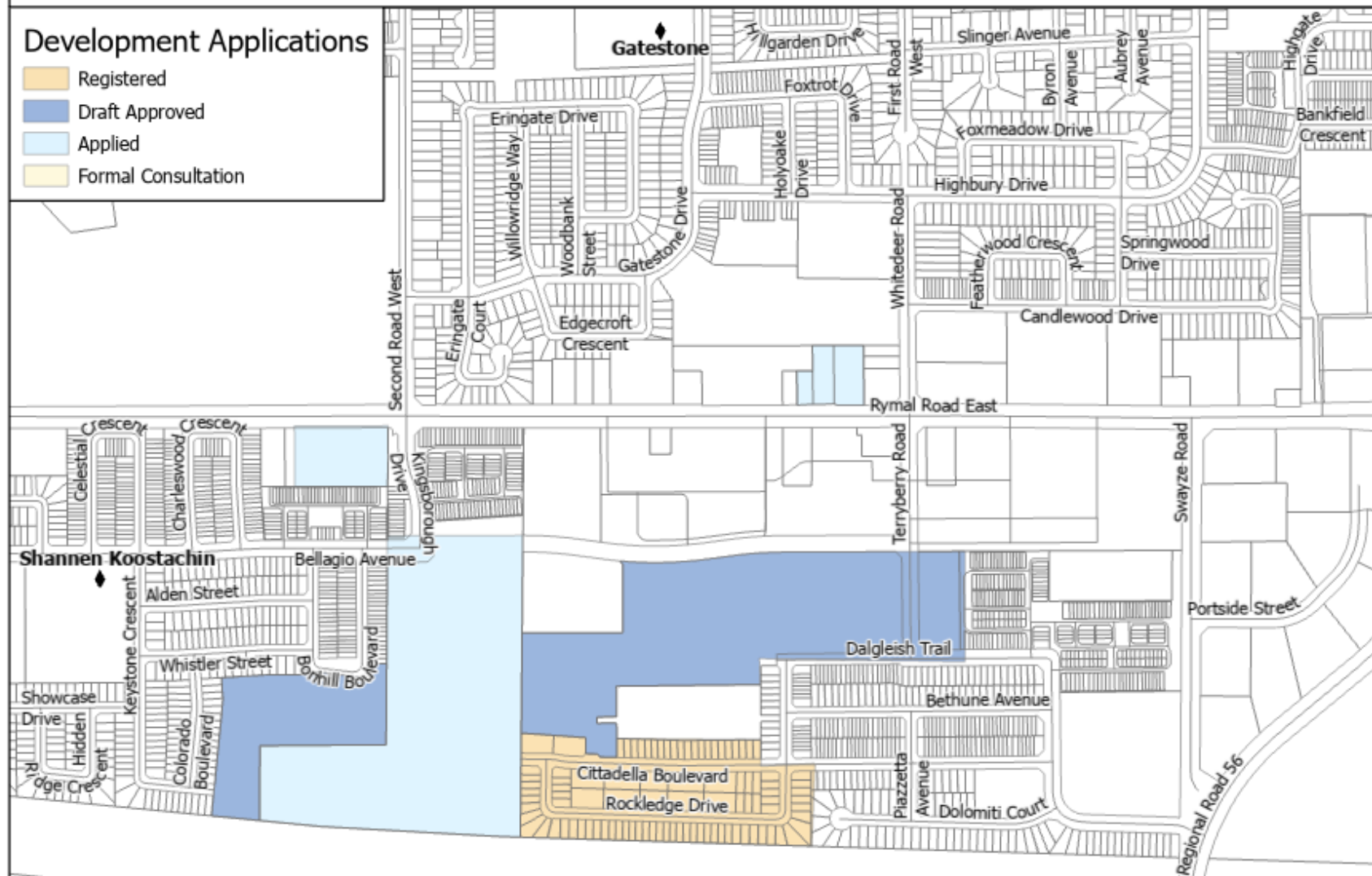
School	OTG		Current Enrolment	Projected Enrolment				
			2023	2024	2025	2026	2027	2028
Shannen Koostachin	599	Enrolment	641	649	658	670	689	700
		Holding Students	194	207	215	262	303	345
		Total Enrolment	835	856	873	932	992	1045
		Utilization	139%	143%	146%	156%	166%	174%
		Excess/Deficit Pupil Places	-236	-257	-274	-333	-393	-446
School	OTG		Current Enrolment	Projected Enrolment				
			2023	2024	2025	2026	2027	2028
Gatestone	582	Enrolment	521	508	495	478	476	478
		Utilization	90%	87%	85%	82%	82%	82%
		Excess/Deficit Pupil Places	61	74	87	104	106	104

Goal: Each school operating within the optimal utilization range ensure equitable access to schools/programming.

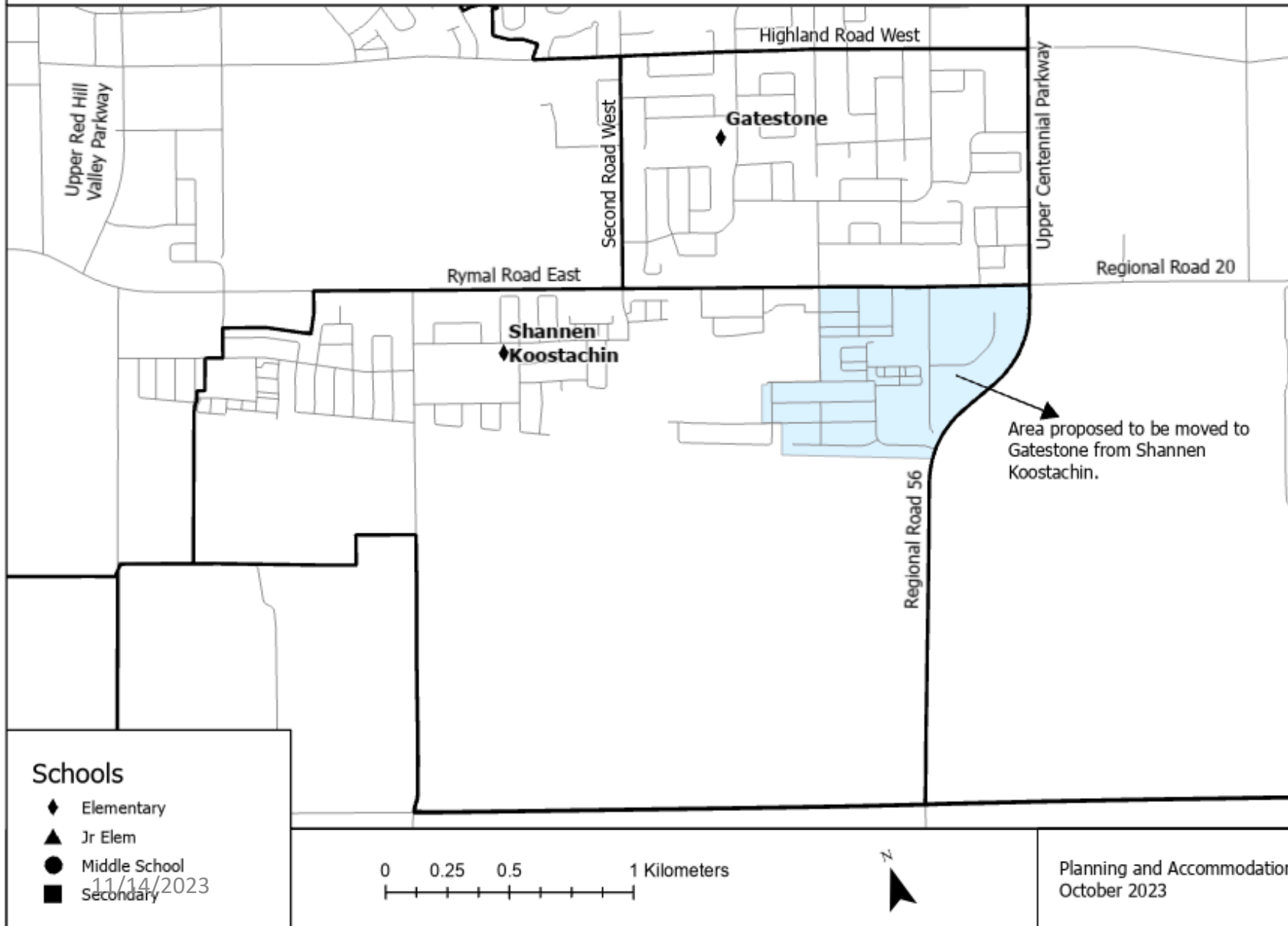
Residential Development

Development Applications

- Registered
 Draft Approved
 Applied
 Formal Consultation

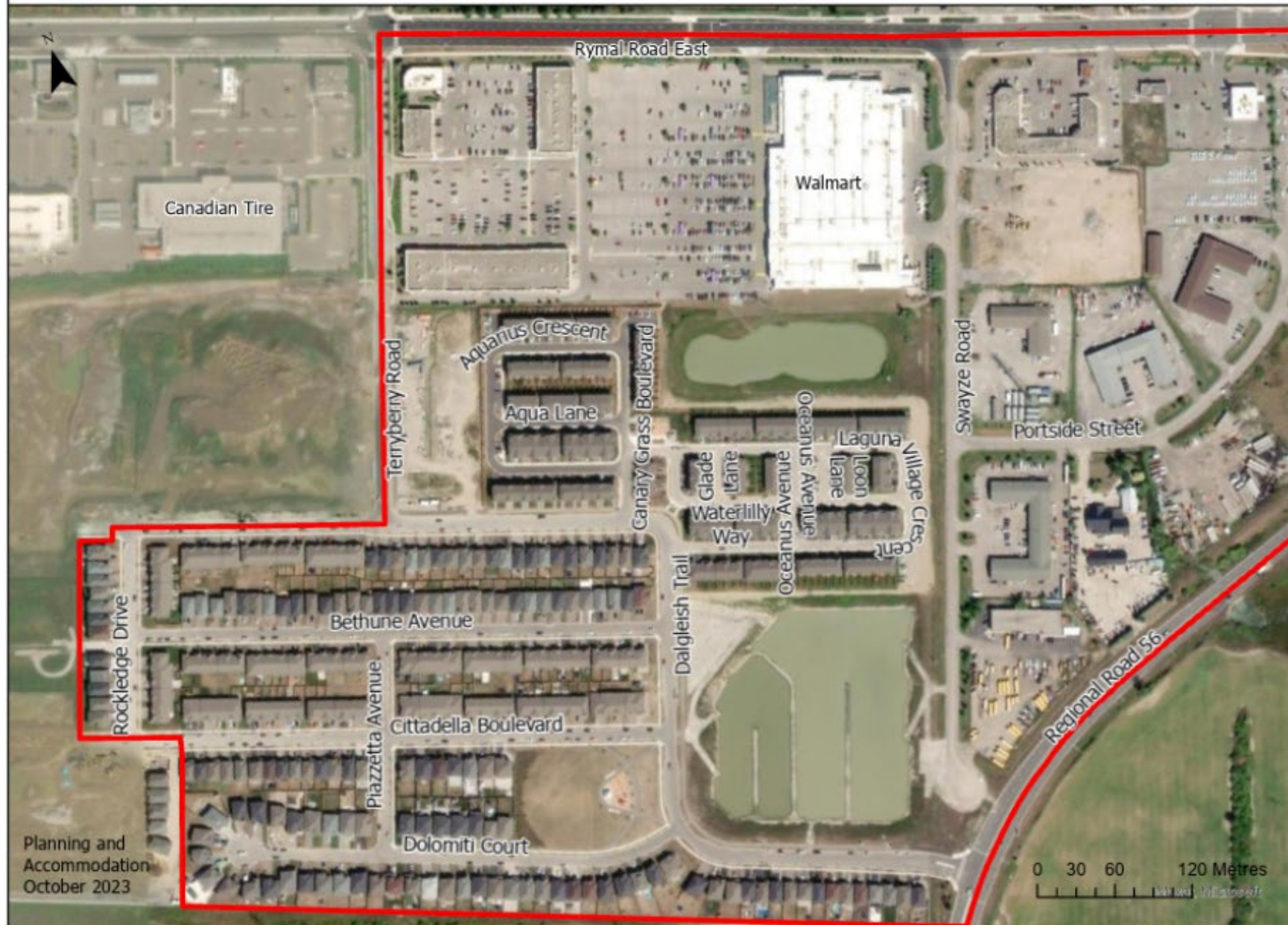


- Housing development south of Rymal road ongoing
- 85 single family & 88 townhomes registered & under construction
- 350 single family, 390 townhomes and 227 apartment buildings in application phase



Proposed Boundary Change

- Proposed portion of Shannen Koostachin boundary moved to Gatestone Elementary School.
- Approximately 170 students reside in area.



Planning and
Accommodation
October 2023

Boundary Change Projected Enrolment

School	OTG		Current Enrolment	Projected Enrolment				
			2023	2024	2025	2026	2027	2028
Shannen Koostachin	599	Enrolment	641	480	489	502	522	535
		Holding Students	194	207	215	262	303	345
		Total Enrolment	835	688	703	764	825	879
		Utilization	139%	115%	117%	128%	138%	147%
		Excess/Deficit Pupil Places	-236	-89	-104	-165	-226	-280

School	OTG		Current Enrolment	Projected Enrolment				
			2023	2024	2025	2026	2027	2028
Gatestone	582	Enrolment	521	676	665	646	642	644
		Utilization	90%	116%	114%	111%	110%	111%
		Excess/Deficit Pupil Places	61	-94	-83	-64	-60	-62

- Projected 2-3 portables at Gatestone in 2024
- OTG: On the ground capacity – Ministry of Education calculated capacity of a school based on instructional space count and loading

Gatestone:

- Currently has 1 bus run, 1 small bus and alternate transportation
- 3 additional bus runs will be required
- All students in proposed boundary change area will receive transportation

Shannen Koostachin:

- No change in bussing for existing students
- Potential reduction of 3 buses

Propose the following implementation:

- September 2024 implementation
- All current out of catchment students at Gatestone will remain at Gatestone
- Boundary change exemptions –current grade 7s may remain at Shannen Koostachin
- Transition committee is formed after boundary change by Superintendent of Student Achievement and Principals

The purpose of the Transition Committee is to represent the community, provide input, advice and recommendations, however the final decisions are made by the Principal and Superintendent.

A brief synopsis of the Transition Committee topics of discussion include:

- Student transition activities
- Traffic and transportation
- Accommodation and program
- All Transition Committee meetings are open to the public, however public members will have no voting rights.

- Address the short and long-term accommodation requirements:
 - Use of excess space at Gatestone
 - Temporarily reduce need for additional portables at Shannen Koostachin
- Guiding Principles:
 - Gatestone utilization at 110% utilization by year 4 of implementation
 - Once holding students at Shannen Koostachin transition to a new school, Shannen Koostachin utilization projected to be within preferred utilization range
 - K-8 model maintained
 - School OTG remain in preferred range
 - Adheres to transportation policy

Round Table Discussion

- Review process and rationale for change
- Initial recommended boundary change(s).
- Enrolment & facility utilization impacts.
- Transportation impacts.
- Implementation considerations including phasing in of a boundary change, financial impacts, timelines, and temporary and permanent status of the boundary change.
- Provide opportunity for community member to ask questions and provide feedback on proposed boundary change.
- Determine meeting type (world café, facilitated small group discussion, information stations etc.)

- Community members can provide feedback online by visiting <https://www.engagehwsb.ca/>



Date	Event	Location
November 28, 2023 – 6 pm	Public Meeting	Gatestone – Gym
December 12, 2023 – 6 pm	Advisory Panel Meeting #2	Gatestone - Library

Boundary review will follow HWDSB’s Boundary Review [Policy](#) and [Procedure](#).

All information presented will be posted on the Board website:

<http://www.hwdsb.on.ca/about/school-renewal/boundary-reviews/>