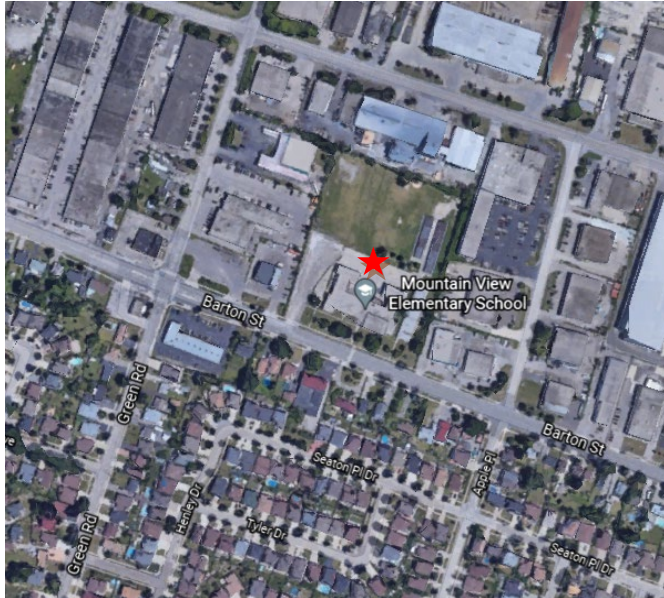


SUBJECT LANDS: Mountain View Elementary School **299 Barton Street East, Stoney Creek**



Mountain View Elementary School is located at 299 Barton Street East in the geographic Township of Stoney Creek. The School is a 2-storey design that was constructed in 1949, with an addition in 1962. It is approximately 46,170 sq. ft. in size situated on a 5.87^{+/-} acre site with ^{+/-} 450 ft. of frontage along Barton Street East and a depth of approximately ^{+/-} 570 feet. The surrounding land use consists of predominately industrial uses to the north, east and west, and residential uses to the south.

HWDSB adopted a resolution declaring the Mountain View Elementary School and lands surplus to the Board's needs and authorized Administration to dispose of the surplus property in accordance with Ontario Regulation 444/98. Under the Board's Property Disposition Policy 3.12 and as a professional courtesy to the public, HWDSB's administration staff will be holding a Public Information Session to inform the local community and interested parties of the requirements and procedures the Board must adhere to when disposing of surplus property. Members of HWDSB Staff and a Planning Consultant will be available at this session to speak about this property.

Why Sell the land?

While the Ministry of Education provides funding for the construction of new schools, there is still a substantial contribution required by the Board. The selling of surplus property is one of the Board's means to generate revenue in support of funding their ongoing capital projects.

You are invited to attend the Public Information Session as noted below:

DATE: Thursday May 27, 2021

TIME: 6:00 p.m. – 7:00 p.m.

LOCATION: via Microsoft Teams (virtual/electronic meeting)

**Questions concerning this Notice can be directed to:
Planning & Accommodation
905 527-5092 ext. 2479**

Notice Date: May 13, 2021