

Queens' Rangers/Beverly/Seaton Elementary School Community Meeting

December 13, 2018

curiosity

creativity

possibility

The Hamilton-Wentworth District School Board acknowledges our presence on ancestral Anishinaabe and Haudenosaunee Confederacy land as determined by the Dish with One Spoon treaty.

The intent of this agreement is for all nations sharing this territory to do so responsibly, respectfully and sustainably in perpetuity.

We respect the longstanding relationships with the local Indigenous communities, the Mississaugas of the New Credit First Nation and the Six Nations of the Grand River.



Welcome and Introductions

curiosity

creativity

possibility

- Introductions
- Information shared by staff
- Questions

Ancaster/Copetown Transitions

ZONE 1

- All students attend Dr. John Seaton until they move to the new school on Beverly Community centre site when it opens
- For 2019-20, Grade 8 students will be given the option of continuing to attend the school on the Ancaster Senior/Fessenden site or Dr. John Seaton

ZONE 2

- All students attend Spencer Valley
- For 2019-20, students will be given the option of continuing to attend the CH Bray holding school (Queens Rangers site) for K-6 and the school on the Ancaster Senior/Fessenden site for Grades 7-8

ZONE 3

- K-6 students attend the CH Bray holding school (Queens Rangers site)
- Grades 7-8 students continue to attend the school on the Ancaster Senior/Fessenden site

ZONE 4

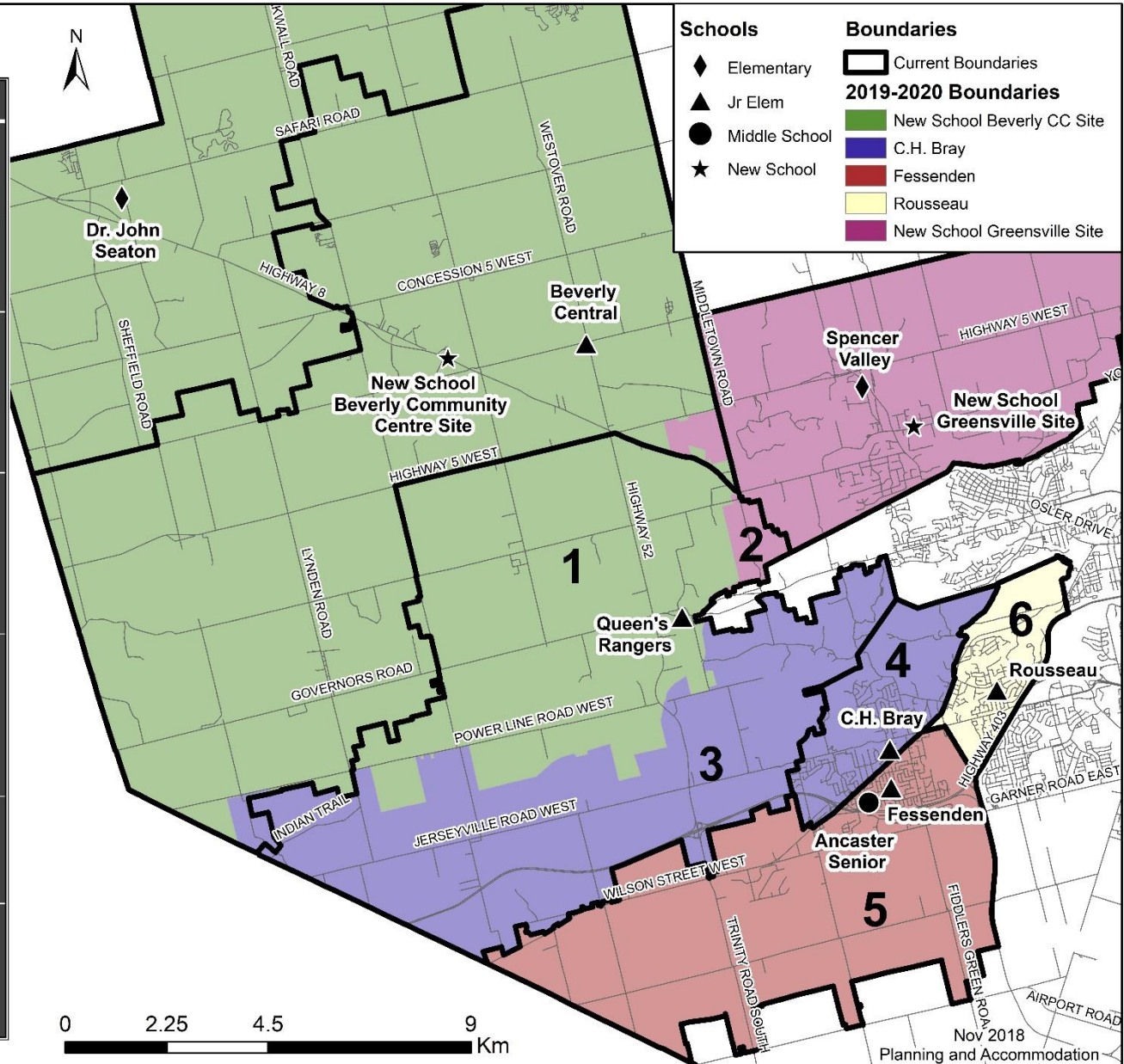
- K-6 students attend the CH Bray holding school (Queens Rangers site)
- Grades 7-8 students continue to attend the school on the Ancaster Senior/Fessenden site

ZONE 5

- All students continue to attend the school on the Ancaster Senior/Fessenden site

ZONE 6

- K-6 students continue to attend Rousseau
- Grades 7-8 students continue to attend the school on the Ancaster Senior/Fessenden site



- Ministry funding – design, receive regulatory approvals and permits, tendered within budget – can take upwards of 18 months
- Construction follows and takes 12 – 16 months
- Ministry does not always approve all proposals
- Board is always looking for ways to minimize transitions for students and acknowledges short term relocations are necessary and will work with communities
- Parents and community input through Transition Committee in January 2019 for all schools

What phase are we in today?

Contractor began work Oct 30.

Site is cleared and excavation underway.

Next Steps:

- Attain Building Permit for the 6 classroom addition.
- Pour footings and foundations
- Anticipated construction completion is November 2019
- Move in January 2020 for second term

HWDSB



Mobilization



Fencing along perimeter



curiosity



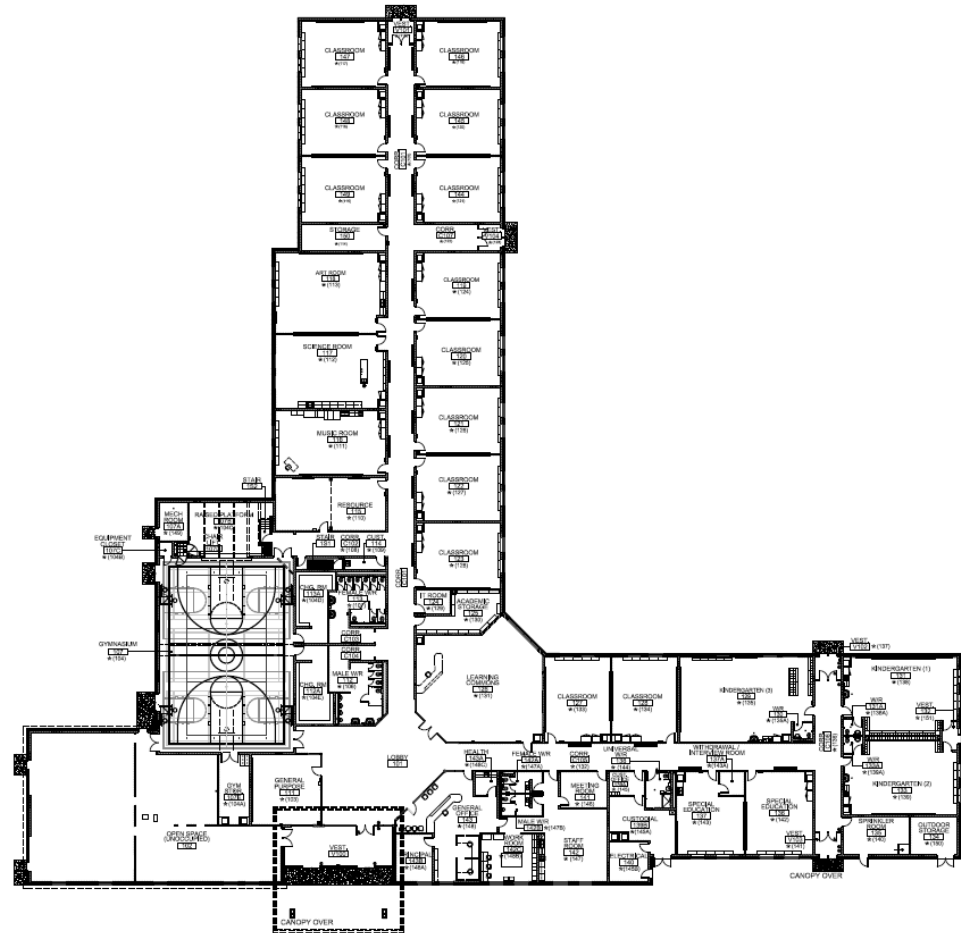
creativity

possibility

curiosity



possibility



- Visual access to main entry and internal circulation (including audio and video intercom)
- Public Address system
- Includes offices, work rooms, meeting space, a health room and staff washrooms



Tiffany Hills Main Office

- Area : 1,200 square feet
- Direct access to outdoor play area
- Washrooms for exclusive use of kindergarten rooms
- Teaching wall with whiteboards at baseboard level for student access
- Coat cubbies with hooks
- Millwork for storage



Adelaide Hoodless FDK

- Area: 1,000 square feet
- Teaching wall with white board and interactive short throw projector
- Teacher coat & book storage cabinet
- Lockable full height cupboards with open adjustable shelving for instrument storage
- Large stainless steel sink for cleaning instruments and separate small sink for mouth piece sanitization



Adelaide Hoodless Music Room

HWDSB

- Area : 4,000 square feet
- Resilient sports flooring
- Basketball, volleyball and badminton
- Scoreboard
- Gym Divider Curtain
- Fixed Stage

GYMNASIUM



Pauline Johnson Gym

- Area (sf): 1050
- Teaching wall with white board and interactive short throw projector
- Teacher coat & book storage cabinet
- Counter with two large sinks and cabinets below and above
- Deep cabinets for storage of paper and art supplies



Adelaide Hoodless Art Room

- Area (sf): 1050
- Teaching wall with white board and interactive short throw projector
- Teacher coat & book storage cabinet
- Teacher demonstration station located centrally in room with sink
- Counter with two large sinks and cabinets below and above



- **How will children be supported in the move?** A Transition Committee including all 3 school communities involved will ensure children feel supported. This may include visits to Dr. Seaton, shared community events and opportunities for students to meet prior to the move. Parents and school staff at each site will have the opportunity to ensure smooth transitions between January and June next year in 2019.
- **Why not wait until approvals are done and construction has started?** This may result in a mid-semester closure and transition of students from CH Bray to Queen's Ranger and Queen's Rangers to Dr. John Seaton. It is easier to plan a transition and commence at the start of a school year.

- **Construction has not begun, yet Queens' Rangers children are earmarked for that school will be bussed to Seaton in September 2019 where there isn't the space for them, in a school is in poor condition.** Dr. John Seaton has a capacity of 349 and the current enrolment is 201. There are at a minimum 4 vacant classrooms. The projected enrolment for 2019 with a portion of Queen's Rangers students is 275. The utilization at that point will be 79%. The 2018 review of Dr. John Seaton is that it is fair condition according to standards.
- **Why has it taken so long?** The new Beverly Community school site had additional conditions to clear prior to construction which included:
 - Constructing a school on non-board owned property
 - Approvals through MOECC due to septic system
 - Approvals through MOT due to location of school entrance on Highway 8
 - Combined design with City of Hamilton due to community centre

HWDSB



Q&A

curiosity

creativity

possibility