

New CH Bray/Queens Rangers Elementary School Community Meeting

December 12, 2018

The Hamilton-Wentworth District School Board acknowledges our presence on ancestral Anishinaabe and Haudenosaunee Confederacy land as determined by the Dish with One Spoon treaty.

The intent of this agreement is for all nations sharing this territory to do so responsibly, respectfully and sustainably in perpetuity.

We respect the longstanding relationships with the local Indigenous communities, the Mississaugas of the New Credit First Nation and the Six Nations of the Grand River.



Welcome and Introductions

curiosity

creativity

possibility

- Introductions
- Information shared by staff
- Questions

- Ministry funding – design, receive regulatory approvals and permits, tendered within budget – can take upwards of 18 months
- Construction follows and takes 12 – 16 months
- Ministry does not always approve all proposals
- In most cases building a new school requires moving students to another location, short term solutions are needed
- Board is always looking for ways to minimize transitions for students and acknowledges short term relocations are necessary and will work with communities
- Parents and community input through Transition Committee begins in January 2019 for all schools

Ancaster/Copetown Transitions

ZONE 1

- All students attend Dr. John Seaton until they move to the new school on Beverly Community centre site when it opens
- For 2019-20, Grade 8 students will be given the option of continuing to attend the school on the Ancaster Senior/Fessenden site or Dr. John Seaton

ZONE 2

- All students attend Spencer Valley
- For 2019-20, students will be given the option of continuing to attend the CH Bray holding school (Queens Rangers site) for K-6 and the school on the Ancaster Senior/Fessenden site for Grades 7-8

ZONE 3

- K-6 students attend the CH Bray holding school (Queens Rangers site)
- Grades 7-8 students continue to attend the school on the Ancaster Senior/Fessenden site

ZONE 4

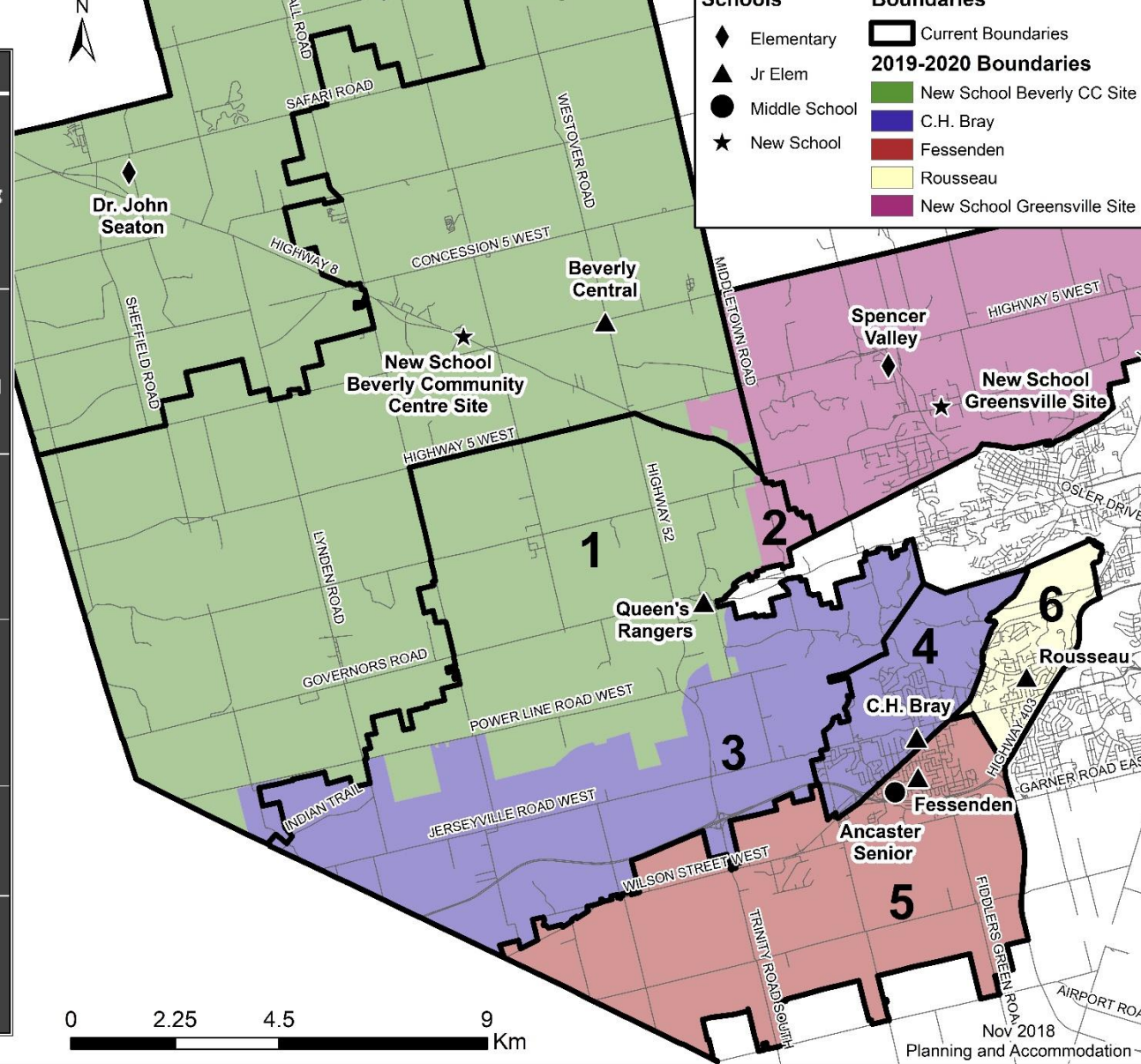
- K-6 students attend the CH Bray holding school (Queens Rangers site)
- Grades 7-8 students continue to attend the school on the Ancaster Senior/Fessenden site

ZONE 5

- All students continue to attend the school on the Ancaster Senior/Fessenden site

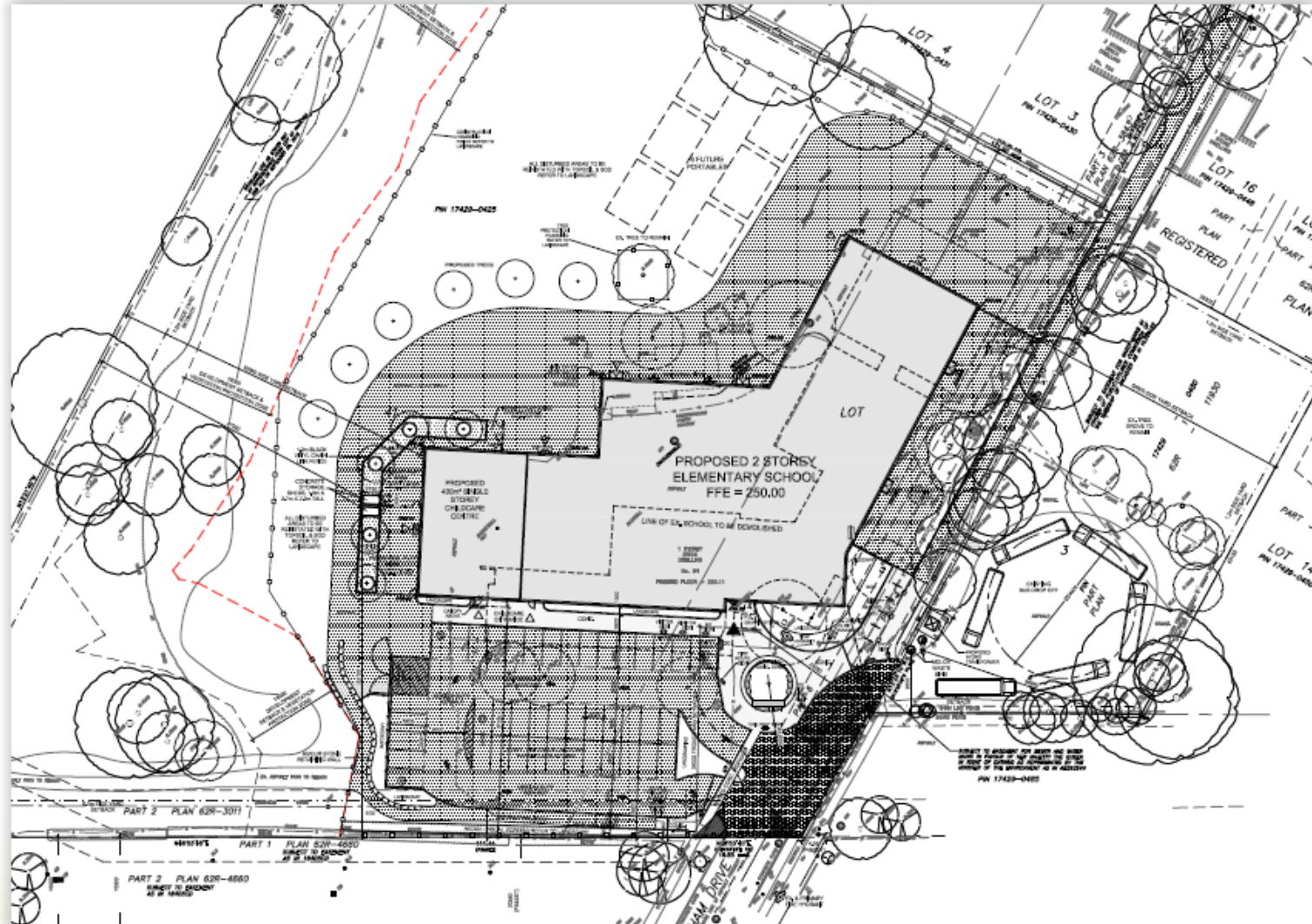
ZONE 6

- K-6 students continue to attend Rousseau
- Grades 7-8 students continue to attend the school on the Ancaster Senior/Fessenden site



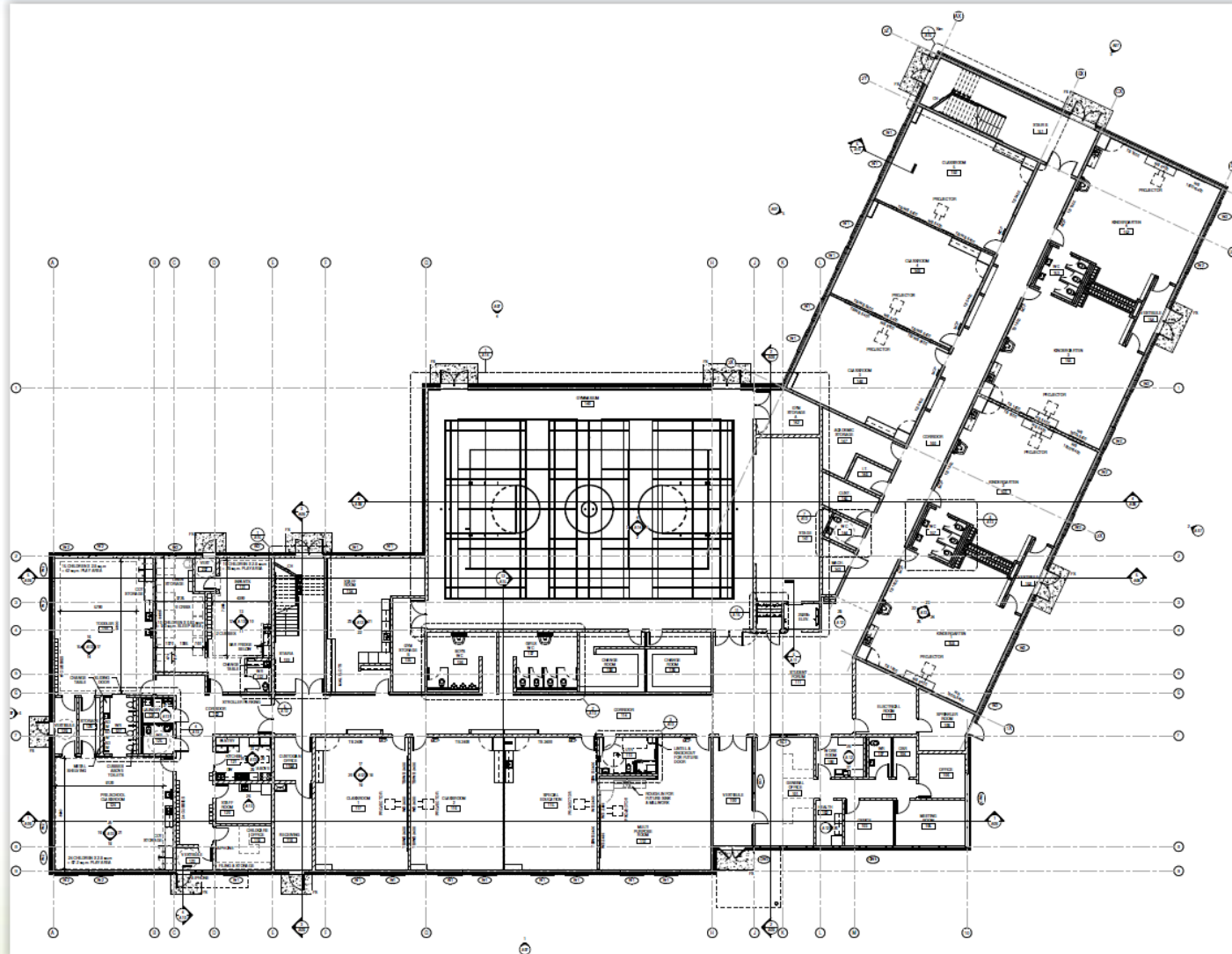
SITE PLAN

* Subject to change



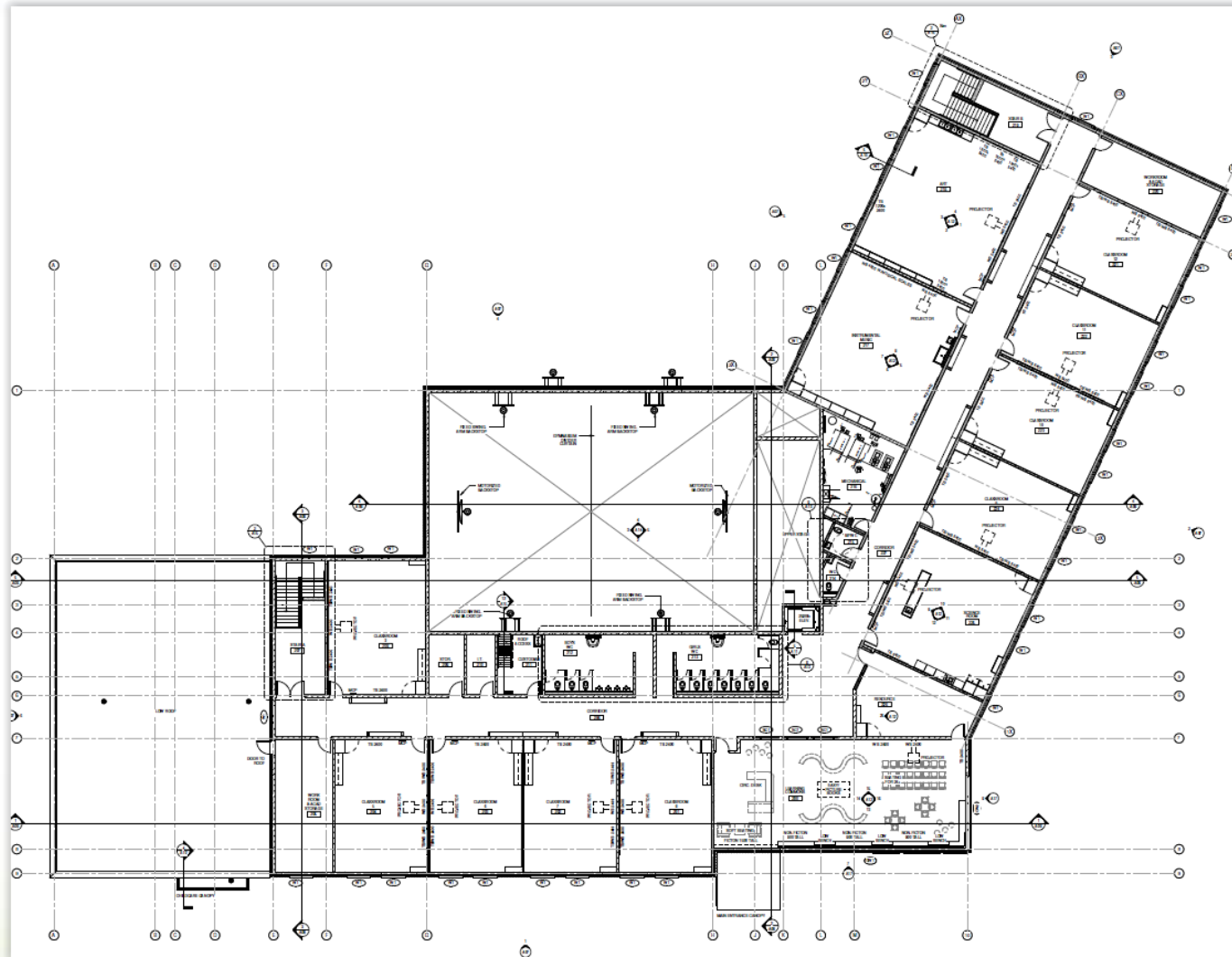
GROUND FLOOR PLAN

* Subject to change



SECOND FLOOR PLAN

* Subject to change



- Visual access to main entry and internal circulation (including audio and video intercom)
- Public Address system
- Includes offices, work rooms, meeting space, a health room and staff washrooms



Tiffany Hills Main Office

- Area : 1,200 square feet
- Direct access to outdoor play area
- Washrooms for exclusive use of kindergarten rooms
- Teaching wall with whiteboards at baseboard level for student access
- Coat cubbies with hooks
- Millwork for storage



Adelaide Hoodless FDK

- Area: 1,000 square feet
- Teaching wall with white board and interactive short throw projector
- Teacher coat & book storage cabinet
- Lockable full height cupboards with open adjustable shelving for instrument storage
- Large stainless steel sink for cleaning instruments and separate small sink for mouth piece sanitization



Adelaide Hoodless Music Room

HWDSB

- Area : 5,500 square feet
- Resilient sports flooring
- Basketball, volleyball and badminton
- Scoreboard
- Gym Divider Curtain
- Fixed Stage

GYMNASIUM



Pauline Johnson Gym

- Area (sf): 1050
- Teaching wall with white board and interactive short throw projector
- Teacher coat & book storage cabinet
- Counter with two large sinks and cabinets below and above
- Deep cabinets for storage of paper and art supplies



Adelaide Hoodless Art Room

- Area (sf): 1050
- Teaching wall with white board and interactive short throw projector
- Teacher coat & book storage cabinet
- Teacher demonstration station located centrally in room with sink
- Counter with two large sinks and cabinets below and above



What will the QR look like for 2019-2020?

- QR site has the capacity for 222 students.

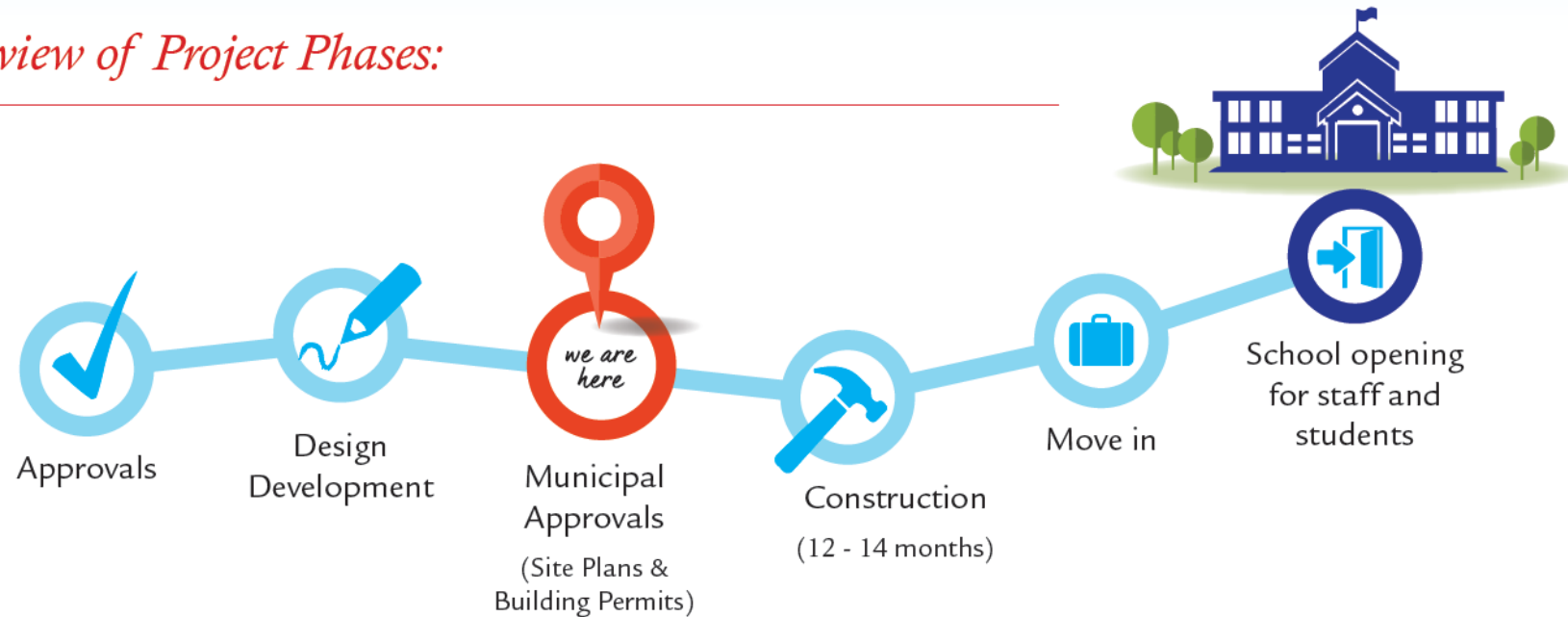
JK	SK	1	2	3	4	5	6
41	42	37	37	43	49	45	39

- This will mean 332 students on site.

- **Can we all fit on the QR site?** 3-4 Portables are required, use of office, library and comp lab as classrooms.
- **Septic system will be overtaxed** - we are not adding any fixtures to the system and have low flow efficient fixtures which significantly reduces the load on the system.
- **Washrooms are not enough** - we are within the building code for fixture counts
- **Water - well water has high level sodium and concerns for last 3 years; we use water bottles for students - bad for our environment** - we followed the regulations for high sodium levels and will continue to monitor the ability to switch off bottled water.
- **Bussing** - there are no other viable options to accommodate CH Bray students during construction. They must vacate the school; the surrounding schools do not have space for additional students.

HWDSB

Overview of Project Phases:



Approvals are pending from the City of Hamilton and MOECC prior to the construction phase commencing.

curiosity

creativity

possibility

Q&A

curiosity

creativity

possibility