

## ELIZABETH BAGSHAW, SIR WILFRID LAURIER SCHOOL CONSOLIDATION INFORMATION MEETING

April 11, 2018

6:00 p.m.

Sir Wilfrid Laurier School

The Hamilton-Wentworth District School Board acknowledges our presence on ancestral Anishinaabe and Haudenosaunee Confederacy land as determined by the Dish with One Spoon treaty.

The intent of this agreement is for all nations sharing this territory to do so responsibly, respectfully and sustainably in perpetuity.

We respect the longstanding relationships with the local Indigenous communities, the Mississaugas of the New Credit First Nation and the Six Nations of the Grand River.



Jeff Gillies

Superintendent of Student Achievement

Nadeen Shehaiber

Manager Capital Projects

Tanya Shaver

Executive Assistant

Jennifer Hogan

Acting Principal – Elizabeth Bagshaw

Debbie Sprentz

Principal – Sir Wilfrid Laurier

Dianne Barlow

Vice-Principal – Sir Wilfrid Laurier

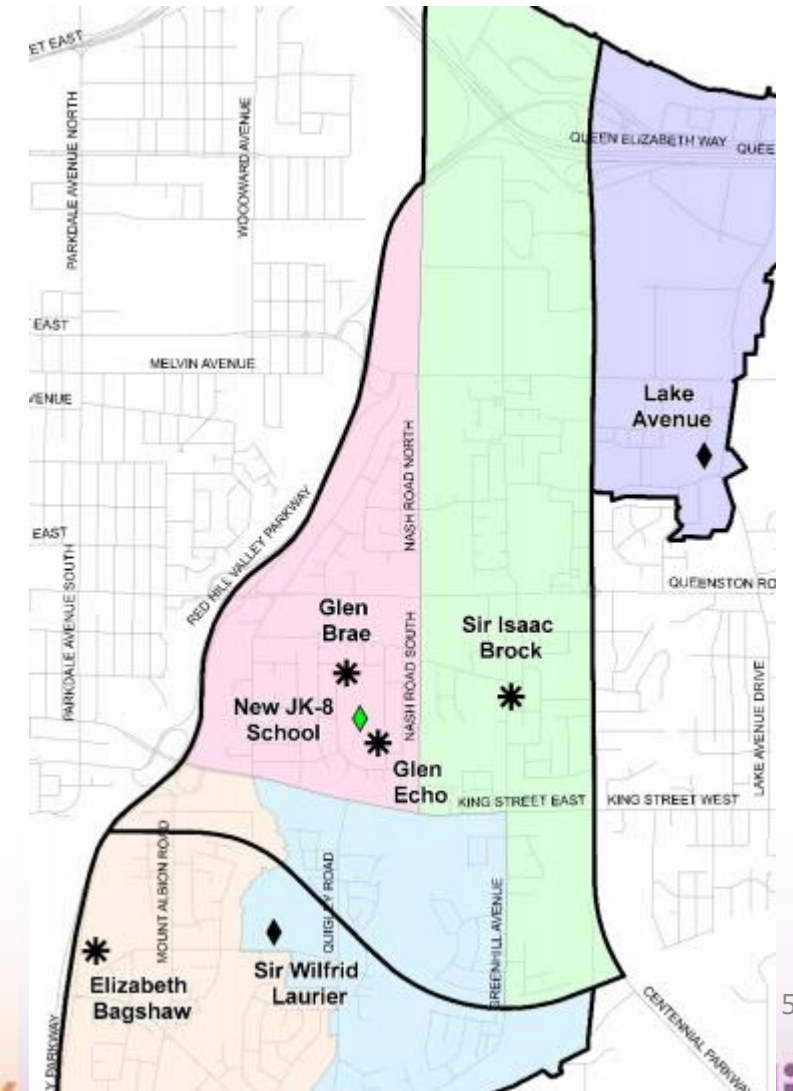
Todd White

Board Chair & Trustee – Ward 5

- East Hamilton School Consolidation Overview
- Plans for New School on Glen Brae Site
- Transition Process
- Timelines / Next Steps

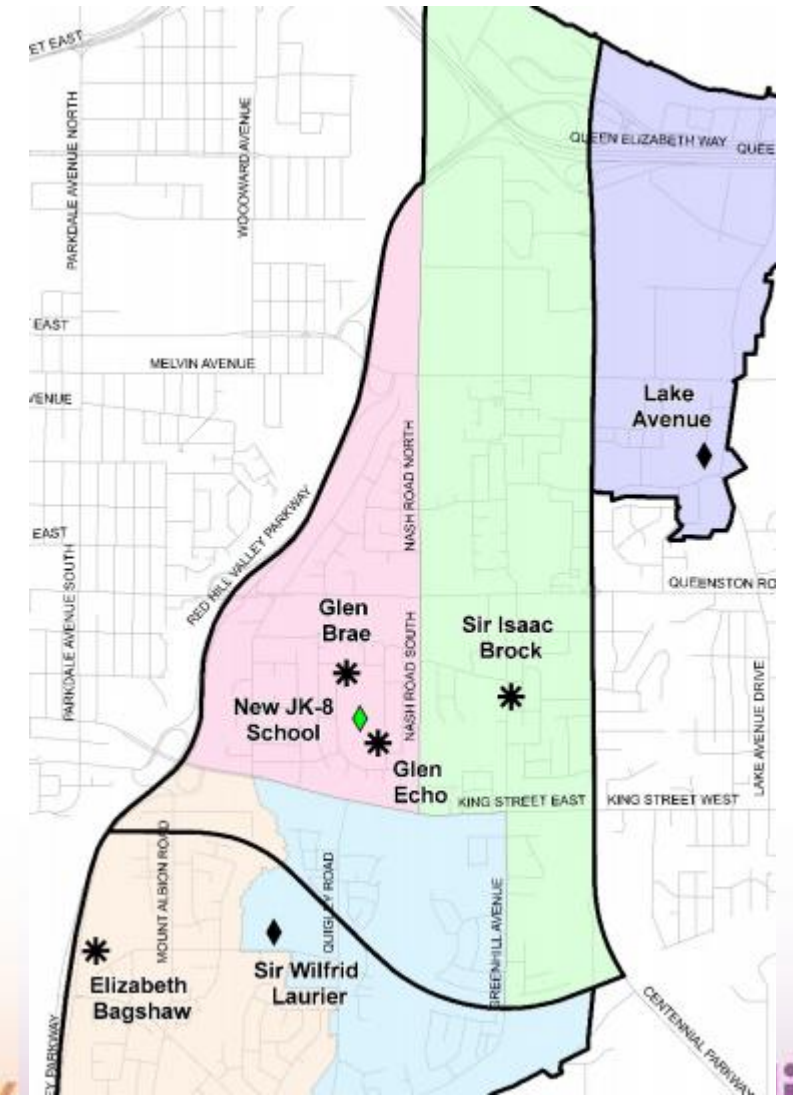
On June 6, 2016, Trustees approved the following with respect to the East Hamilton City 2 Pupil Accommodation Review:

***That Elizabeth Bagshaw, Glen Brae, Glen Echo and Sir Isaac Brock be closed pending Ministry of Education funding for a new JK-8 elementary school on the Glendale Campus and that the boundaries between the new Glendale Campus School and Sir Wilfrid Laurier be modified.***



On June 19, 2017 the Ministry of Education announced funding to build a new 682 pupil place, JK - 8 elementary school beside Glen Brae School.

This new school will accommodate students from Glen Brae, Glen Echo, Sir Isaac Brock, Elizabeth Bagshaw and Sir Wilfrid Laurier.





# HWDSB ZONES 1 & 2

# HWDSB

## East Hamilton School Consolidation Plan

**Glen Echo, Glen Brae and Sir Isaac Brock** students (Regular Track) remain at their current sites during construction of the new school and move when construction is complete. Following opening of the new school, the existing Glen Brae School will be closed and demolished.

**ZONE 1**  
All Glen Echo and Glen Brae (Regular Track) students move to the new school on the Glen Brae site. Glen Echo School to be closed. Glen Brae School to be closed and demolished.

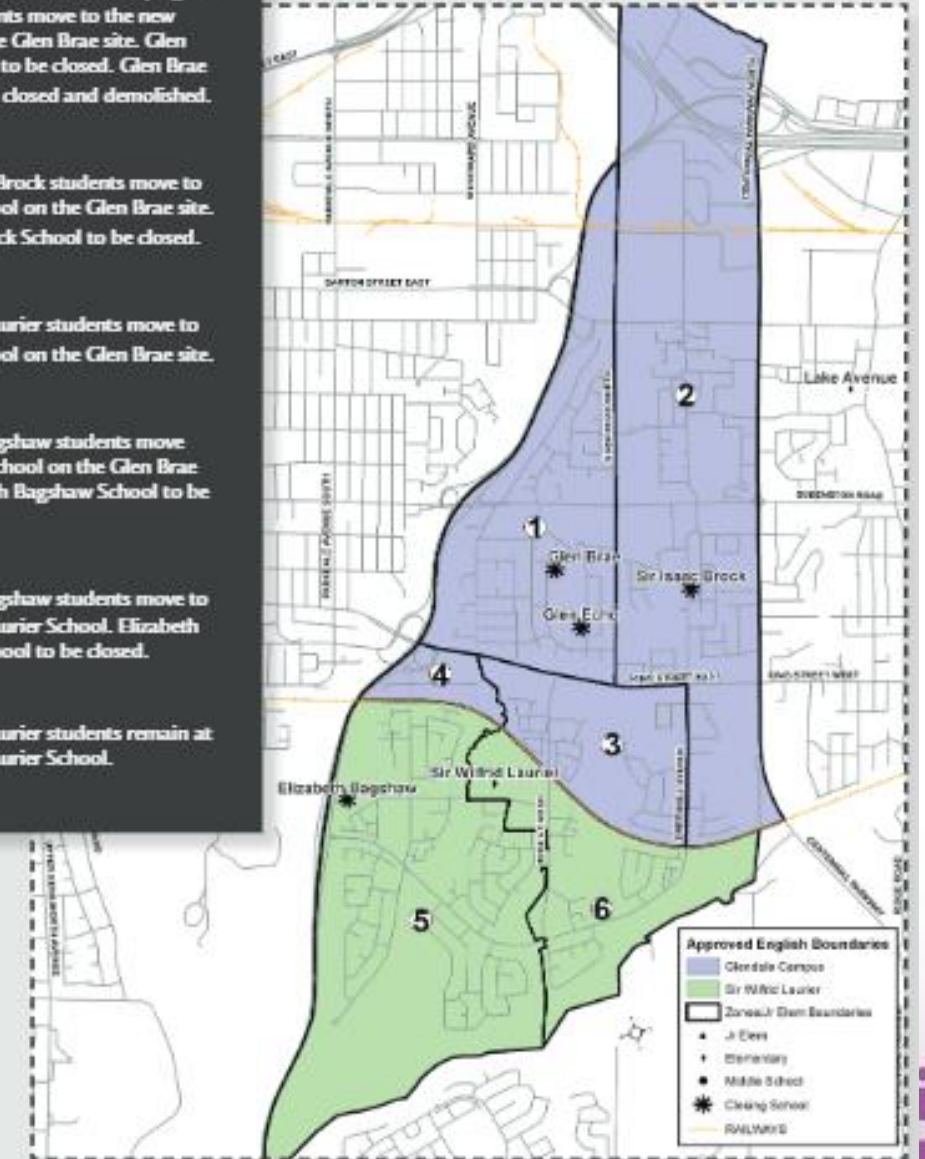
**ZONE 2**  
All Sir Isaac Brock students move to the new school on the Glen Brae site. Sir Isaac Brock School to be closed.

**ZONE 3**  
Sir Wilfrid Laurier students move to the new school on the Glen Brae site.

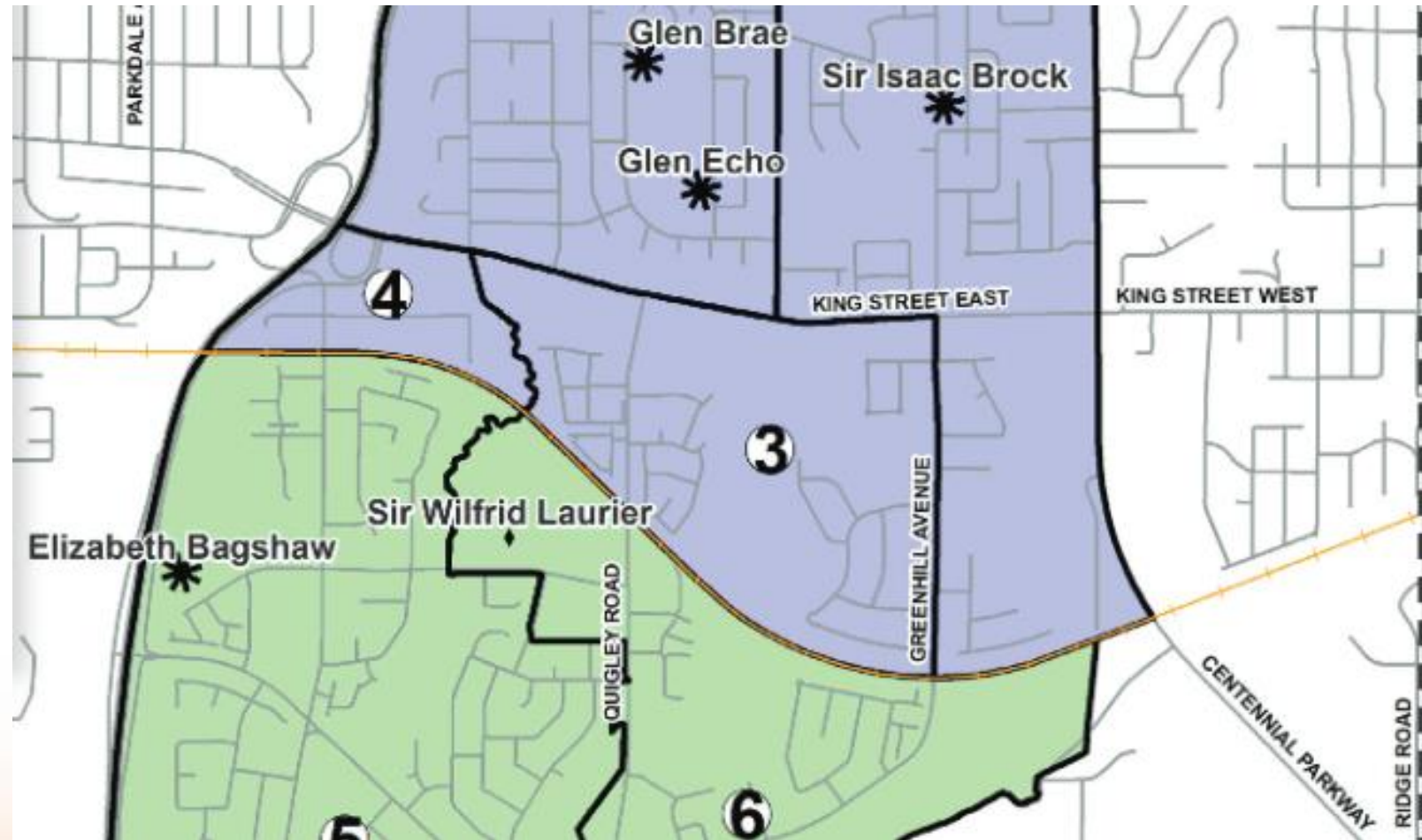
**ZONE 4**  
Elizabeth Bagshaw students move to the new school on the Glen Brae site. Elizabeth Bagshaw School to be closed.

**ZONE 5**  
Elizabeth Bagshaw students move to Sir Wilfrid Laurier School. Elizabeth Bagshaw School to be closed.

**ZONE 6**  
Sir Wilfrid Laurier students remain at Sir Wilfrid Laurier School.



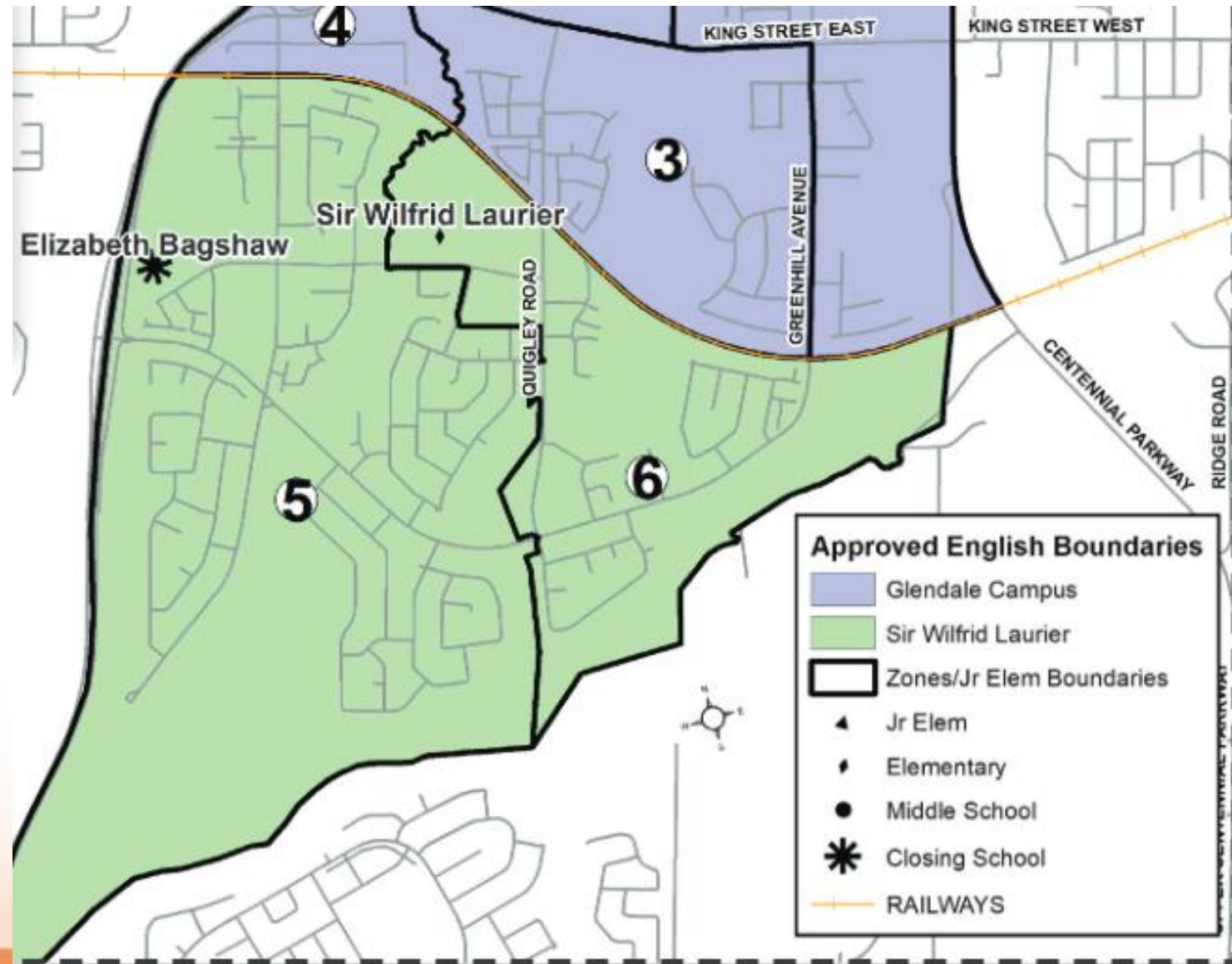
**Sir Wilfrid Laurier (Zone 3) and Elizabeth Bagshaw (Zone 4)** students remain at their current sites during construction of the new school and move when construction is complete.





**Elizabeth Bagshaw (Zone 5)**  
students move to Sir Wilfrid Laurier following the opening of the new Glendale Campus School. Elizabeth Bagshaw closes.

**Sir Wilfrid Laurier (Zone 6)**  
students remain at Sir Wilfrid Laurier.



	Capacity	2020 Capacity	2017	2018	2019	2020	2021	2022	2023	2024	2025
<b>Glen Campus</b>	682		0	0	0	656	661	657	655	664	673
<b>Utilization</b>						96%	97%	96%	96%	97%	99%
<b>Sir Wilfrid Laurier</b>	709	738	434	419	408	706	725	730	731	724	725
<b>Utilization</b>						96%	98%	99%	99%	98%	98%



# HWDSB

## NEW SCHOOL ON GLENDALE CAMPUS



- \$15,518,762 funding provided for 682 pupil place K-8 school
- To be built on current Glen Brae site

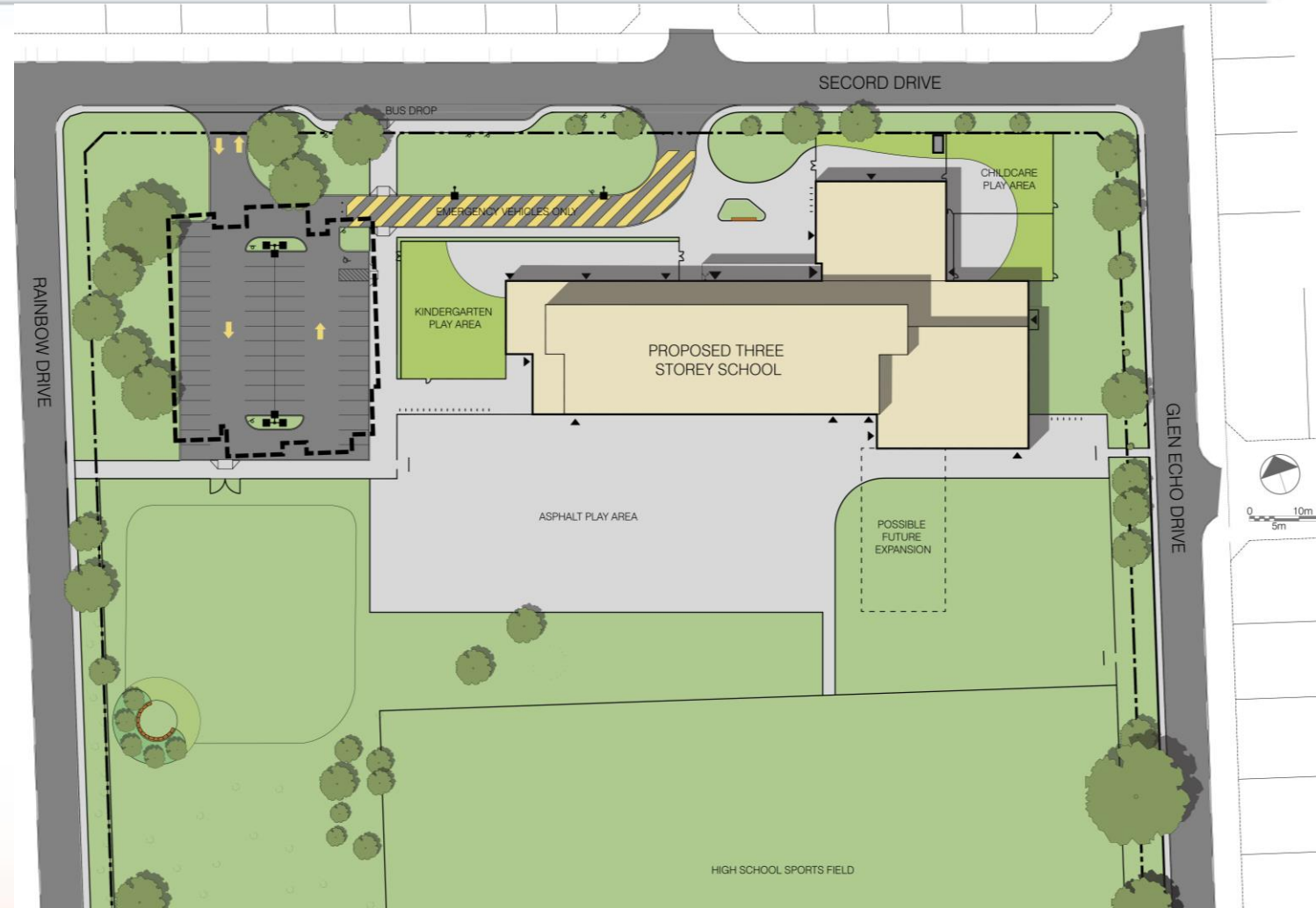
Architect rendering of New Elementary School from Main Entrance

curiosity

creativity

possibility

- New Bus Lay-By Lane on Secord Drive
- Three room Child Care Facility with secured play area
- Five Full Day Kindergarten rooms with secured play area
- Twenty-Five Classrooms (including science, art, music and special education)
- Community Gathering Spaces





## Ground Floor



## Second Floor



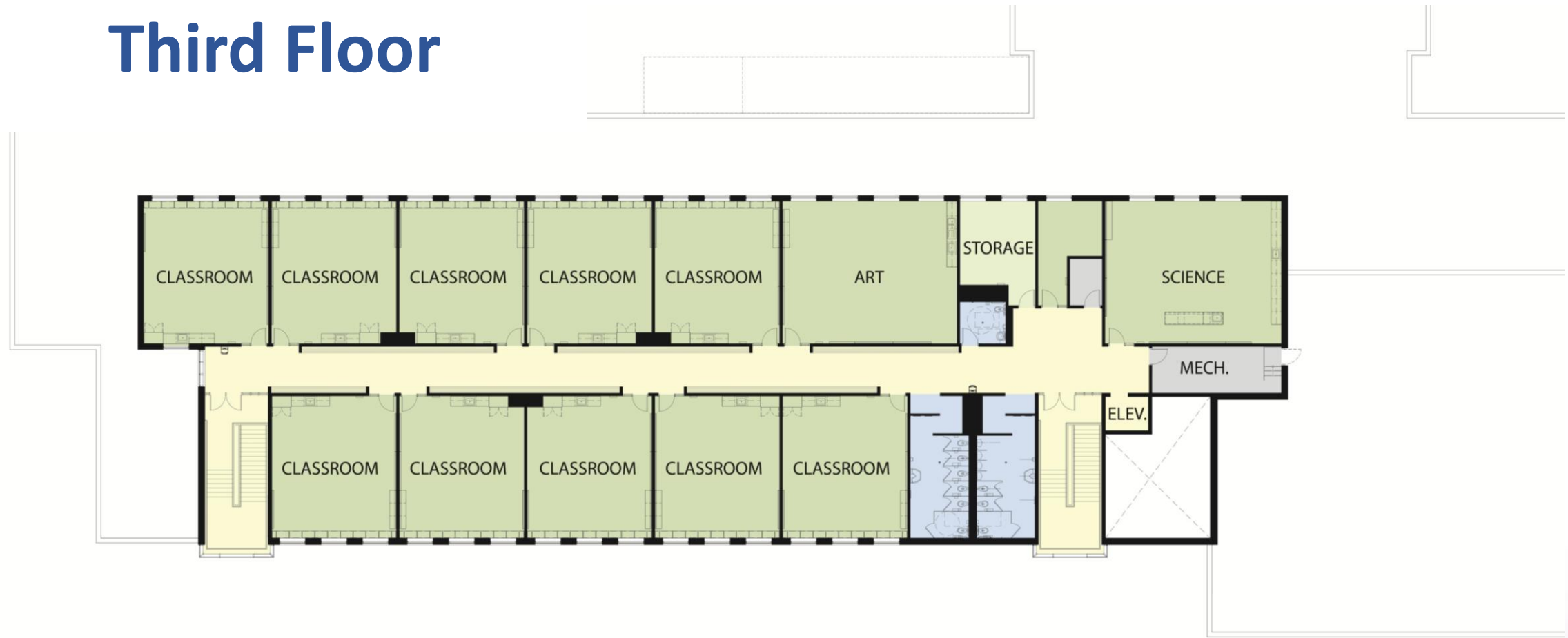
curiosity

creativity

possibility

# HWDSB NEW SCHOOL ON GLENDALE CAMPUS

## Third Floor

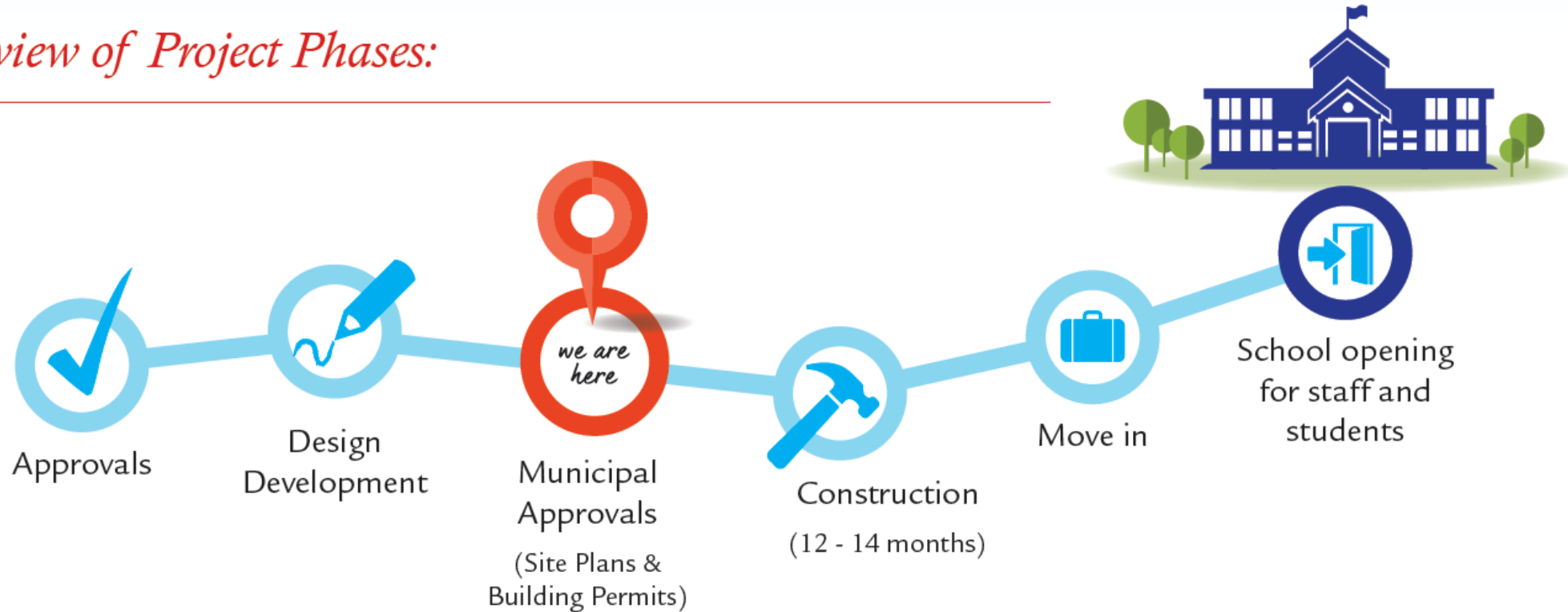


curiosity

creativity

possibility

### *Overview of Project Phases:*



- Project is currently in Municipal Approvals Phase
- School construction takes 12 – 18 months following Approvals Phase



# HWDSB

# ADDITION AT SIR WILFRID LAURIER

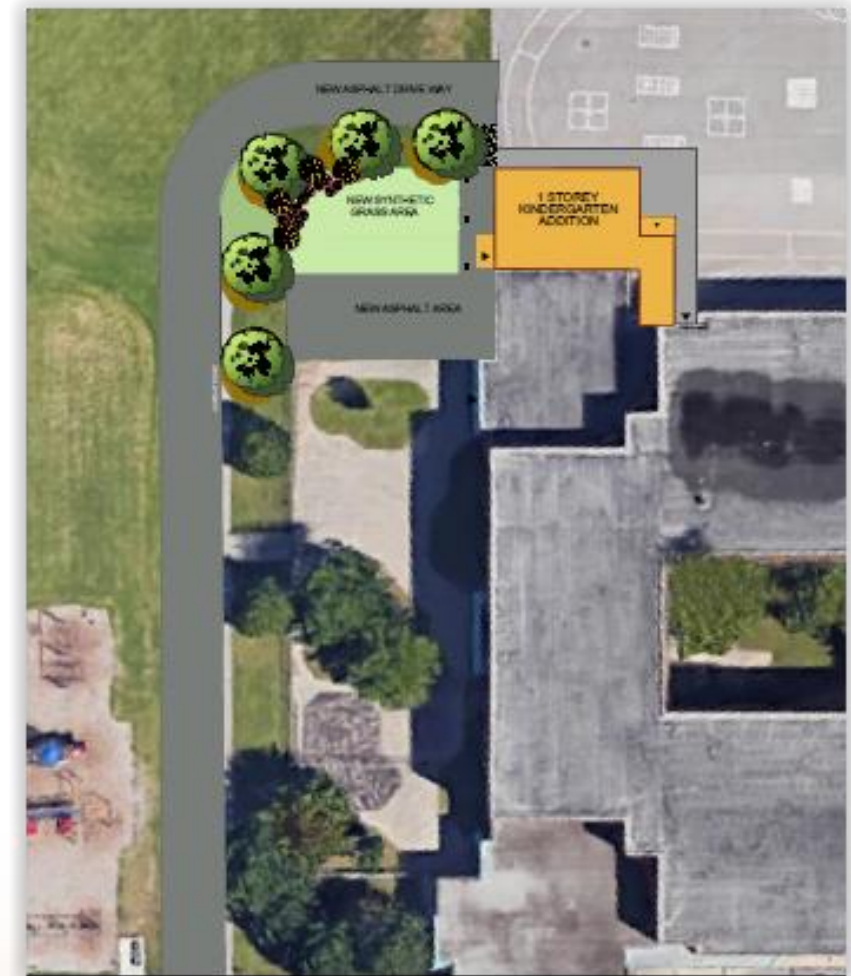


curiosity

creativity

possibility

- Two (2) FDK rooms (one addition and one converted from child care)
- Roof repairs/ replacements
- Work will be completed in two phases;
  - Phase 1: Learning Commons, Music room, one FDK room and roof replacement
  - Phase 2: FDK Addition

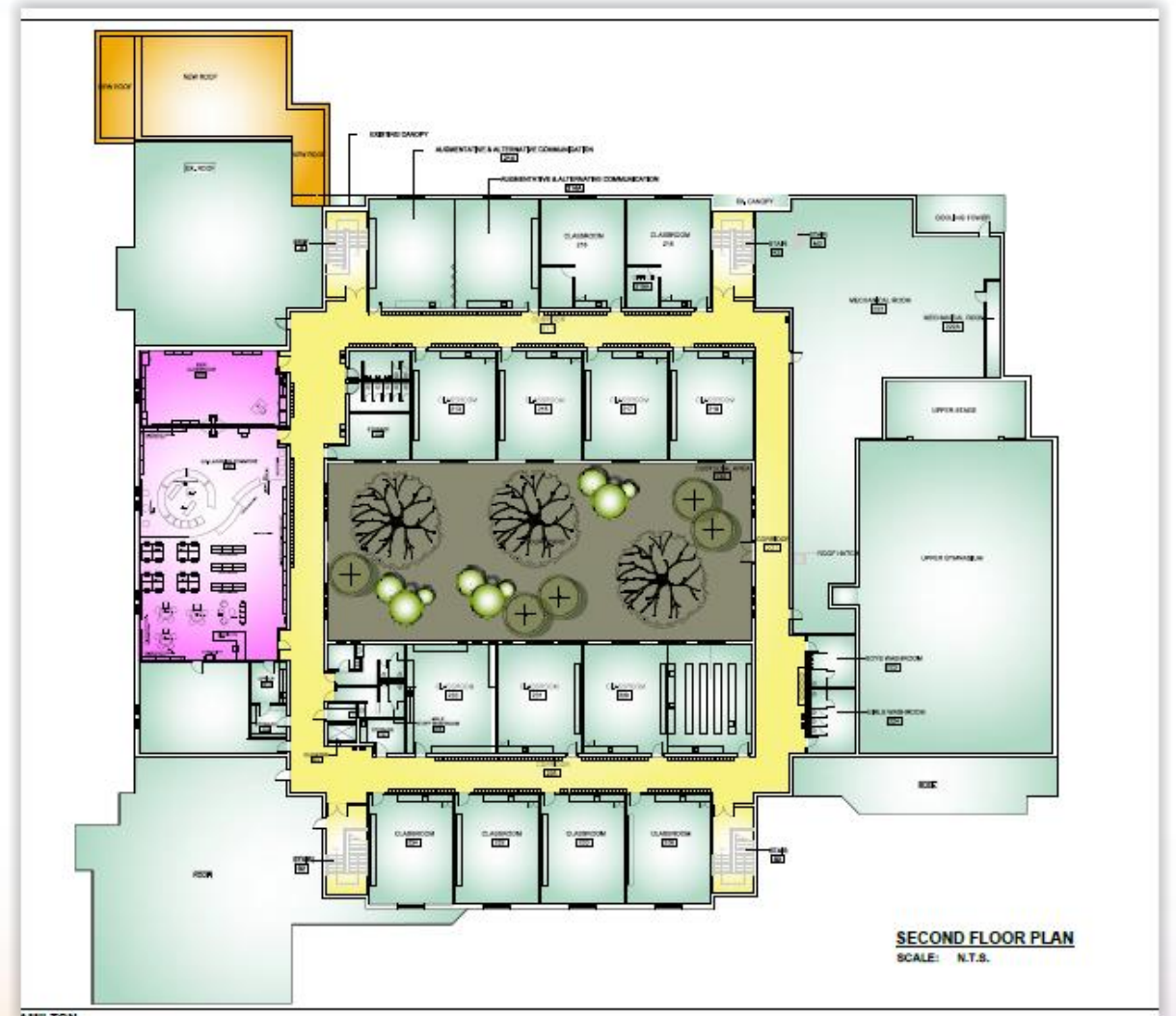




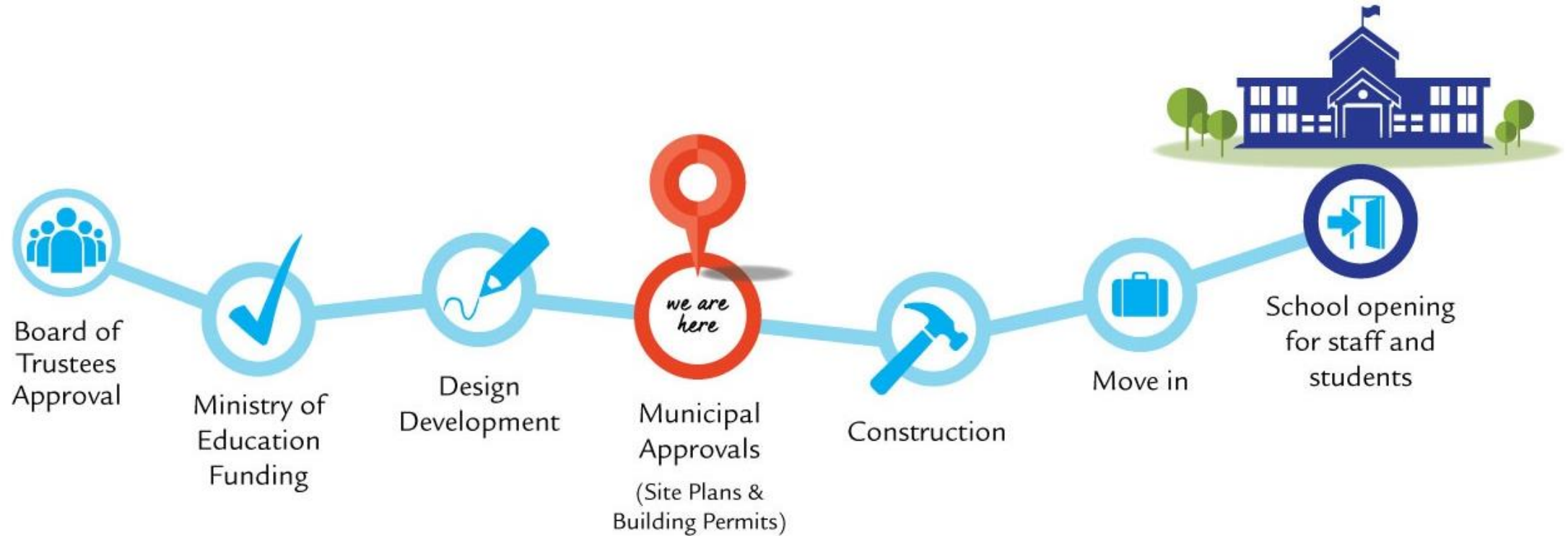
- Renovation to existing day care space into FDK room
- Renovation of Music room to meet requirements of elementary benchmark strategy



- Renovation to Learning commons to create additional classroom and to meet elementary benchmark strategy







- Project is currently in Municipal Approvals Phase
- Projected completion of Phase One for 2019/2020 School Year and Phase Two for 2020/2021 School Year

- 5 Kindergarten Rooms with access to secured outdoor play area
- Connected classes to promote team teaching and improved supervision



- Large open space
- Natural light
- Flexible seating/learning areas





- Area (sf): 1000
- Teaching wall with white board and interactive short throw projector
- Teacher coat & book storage cabinet
- Lockable full height cupboards with open adjustable shelving for instrument storage
- Large stainless steel sink for cleaning instruments and separate small sink for mouth piece sanitization



Adelaide Hoodless Music Room

If the Board of Trustees' decision is consolidation, closure or major program relocation, the following school year will be used to plan for and implement the Board's decision.

A separate advisory group (Transition Committee) will be established to address the transition for students and staff of the affected schools.

Pupil Accommodation Review Procedure for Policy # 2.5

Transition Committees meet several times and provide advice to the Superintendent on a variety of matters including:

- Artefacts and/or traditions to be incorporated into the new school
- School naming based on Naming of Schools Policy # 2.3
- Activities to support students and families prior to actual move
- Opening/closing ceremonies



## Ongoing Communication

- Regular Updates - letters, website, school newsletters, etc.
- School Council Updates
- Community Meetings
- Transition Committee Meetings
- Signage



curiosity

creativity

possibility

On behalf of our planning team, thank you for participating and engaging in this important work. For additional information or questions contact your school Principal or:

Jeff Gillies

HWDSB - Superintendent of Student Achievement

[tshaver@hwdsb.on.ca](mailto:tshaver@hwdsb.on.ca)

905-527-5092 ex. 2361

Todd White

HWDSB – Chair & Trustee Ward 5

[twhite@hwdsb.on.ca](mailto:twhite@hwdsb.on.ca)

289-237-1644