



students
learning
programs
pathways
skills
students



Glendale: Secondary Program Strategy

May 2013



Format for Tonight's Session

- Welcome
- Share Information
- Group discussion
- Question & Answer
- Next Steps



What is our vision?

- All secondary schools are great schools
- Students will have choice within their home schools
- Expanded access for students looking for specialized programs
- All students achieving and graduating in HWDSB



How will we implement the vision?

- We've conducted extensive consultations on secondary education over the past several years
- We're reducing the number of secondary schools from 18 to 13 allowing us to focus our limited resources on fewer buildings
- We're balancing secondary school enrolment to make sure students can choose from a wide variety of programs



Timeline

Key Activities	Dates	Status
Community Consultations on Secondary Education	2008-2012	✓
Director's Student Voice Forums	October 2012	✓
Ministry of Education Announcement	January 2013	✓
Draft Program Strategy Presented at Information Session	March 2013	✓
Draft Program Placement Presented at Public Meeting	April 2013	✓
Community Consultation	April/May 2013	
Final Report to Trustees	June 2013	

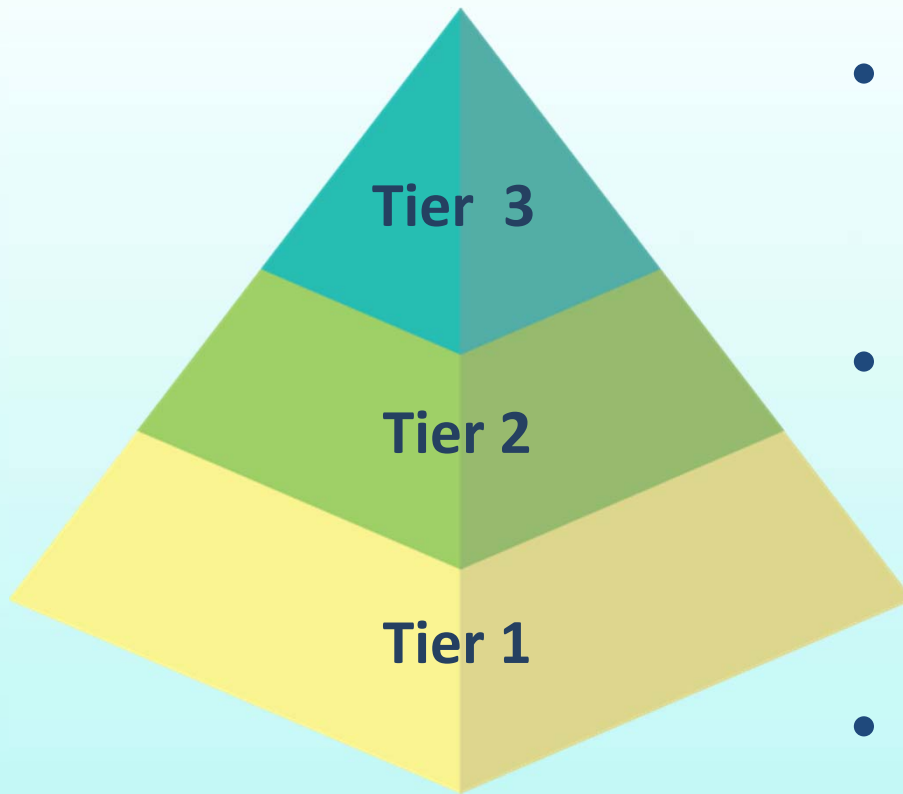


What is the Program Strategy?

- The program strategy is looking at **how** and **where** we deliver programs in our secondary schools
- By revitalizing our secondary schools we will support all students to achieve their full potential
- We're looking at making sure that:
 - Students have what they need in their local schools
 - Every school will support and value each pathway
 - Apprenticeship
 - College
 - Community
 - University
 - Workplace



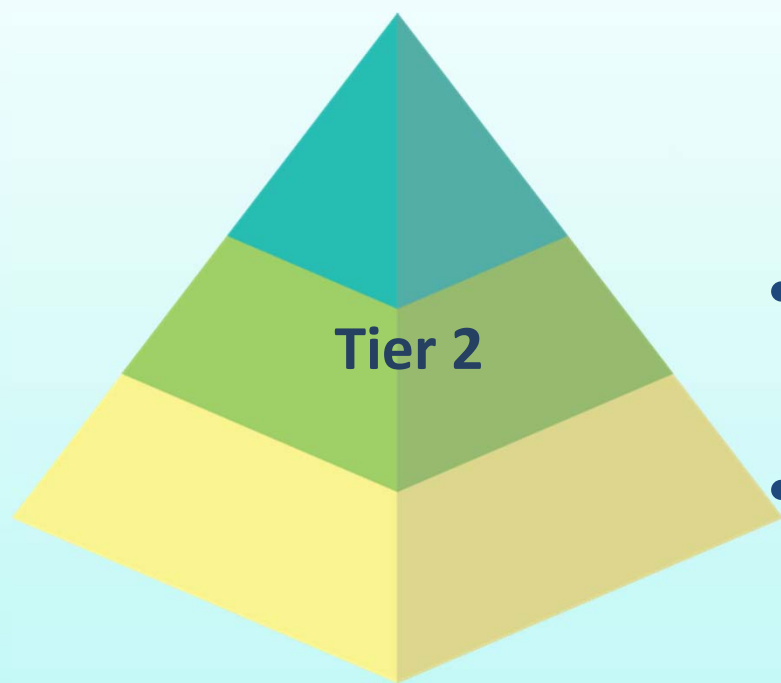
What are the program tiers?



- **Tier 3** is intended for a **FEW** students at a limited number of school sites
- **Tier 2** is intended for **SOME** students and is offered in a few schools if there is enough student interest within the school
- **Tier 1** is what **ALL** students need and is offered in every school



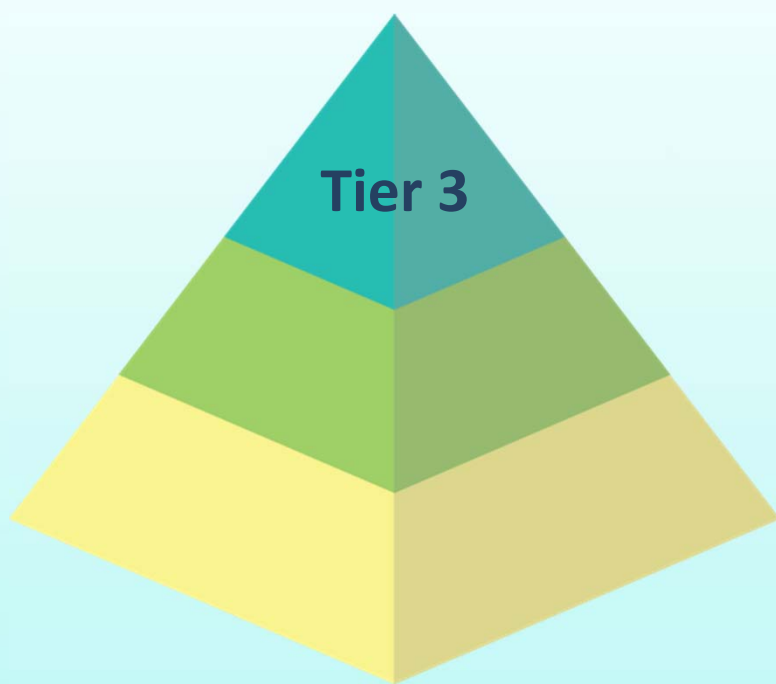
Tier 2:



- **Tier 2** is what **SOME** students need and is offered in a few schools if there is enough student interest within the school
- With enough interest, any school has access to all Tier 2 programs
- Example:
 - Latin
 - Energy
 - Non-Profit
 - Environment
 - Robotics
 - Strings



Tier 3:



- **Tier 3** is intended for a **FEW** students at a limited number of school sites
- Tier 3 programs require the use of specialized materials, staffing or equipment
- Example:
 - International Baccalaureate
 - French Immersion
 - Aviation
 - Aerospace
 - Horticulture
 - Performing Arts



Where will Tier 3 programs be located?

- Programs are strategically placed across the system according to the following criteria:
 - Infrastructure already within a school
 - Distribution of programming specialties across the system
 - Balanced enrolments across schools



Transportation Services

- We are proposing ***enhanced*** transportation for Tier 3 programs to make it easier for students to access specialized programs
- Transportation services would be provided in two cases:
 1. Continue to provide transportation services for students who attend their home school and live greater than 3.2 km away from that school
 2. Proposed ***enhancement*** of transportation services for students engaged in a Tier 3 program who live greater than 3.2 km away from the school offering the Tier 3 program. This enhancement will require a policy change by Trustees

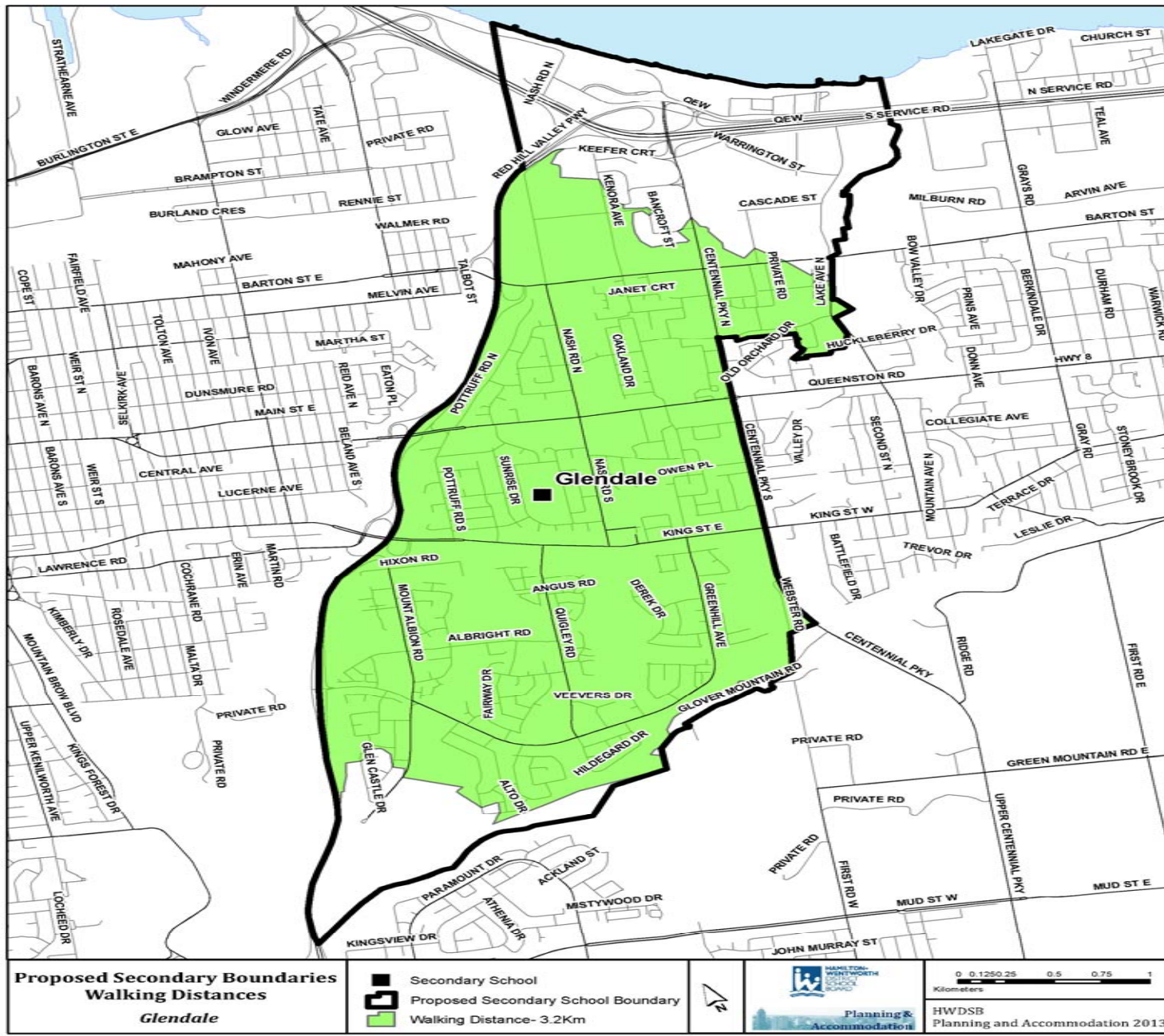


What will Glendale look like?

- All Glendale students will achieve and graduate
- Every student will have choice in their programming
- In addition to Tier 1 and Tier 2 programming, Glendale will offer the following Tier 3 programs:
 - English Second Language (ESL) / English Language Development (ELD)
 - International Baccalaureate (I.B.)
 - Performing Arts
 - Transportation Technology

Glendale Enrolment Projections







Group Discussion

- Each discussion will be 5 - 20 minutes
- Discuss one question at a time
- Write key questions/ideas that come up on the paper provided







Group Discussion

- Each table has a facilitator
- Facilitator role:
 - They are NOT the experts, they are there to listen to your ideas
 - To gather ideas, themes & questions



Question 1: Program Strategy Vision

- The vision of our program strategy is:
 - All secondary schools are great schools
 - Students will have choice within their home schools
 - Expanded access for students looking for specialized programs
 - All students achieving and graduating in HWDSB

**Please discuss our vision statements and
comment on how might we enhance our
vision?**



Question 2: Program Placement

- Tier 3 Programs at Glendale would include:
 - English Second Language (ESL) / English Language Development (ELD)
 - International Baccalaureate (I.B.)
 - Performing Arts
 - Transportation Technology
- Refer to the **Yellow** chart on your table for additional Tier 3 program placements across HWDSB

**What are the benefits or challenges
that Tier 3 program placements could
have for our students?**



Question 3: Boundaries

- Refer to the **White** boundary map hand-outs provided on your table.

Are you in favour of the proposed boundaries?

Why or why not?



Question 4: Transportation Services

- Transportation services would be provided in two cases:
 - Continue to provide transportation services for students who attend their home school and live greater than 3.2 km away from that school
 - Proposed enhancement of services to provide transportation for students engaged in a Tier 3 program who live greater than 3.2 km away from the school offering the Tier 3 program

What might be some of the benefits & challenges for the proposed transportation services for our Tier 3 programs?



Break & Gathering of Questions



Thank You!

- To all of you for your active participation
- To the facilitators & staff

You may provide further input by completing an online survey. To access the survey :



- Go to <http://tinyurl.com/HWDSBProgramStrategy>
- Visit the HWDSB home page (www.hwdsb.on.ca)
- Take one of the cards provided at your table