



CONSTRUCTION NORTH  
 SECOND FLOOR PLAN

**ROOM NUMBERING LEGEND**  
 204 ARCHITECTURAL TENDERED ROOM NUMBER  
 203 NEW HWDSB ROOM NUMBER

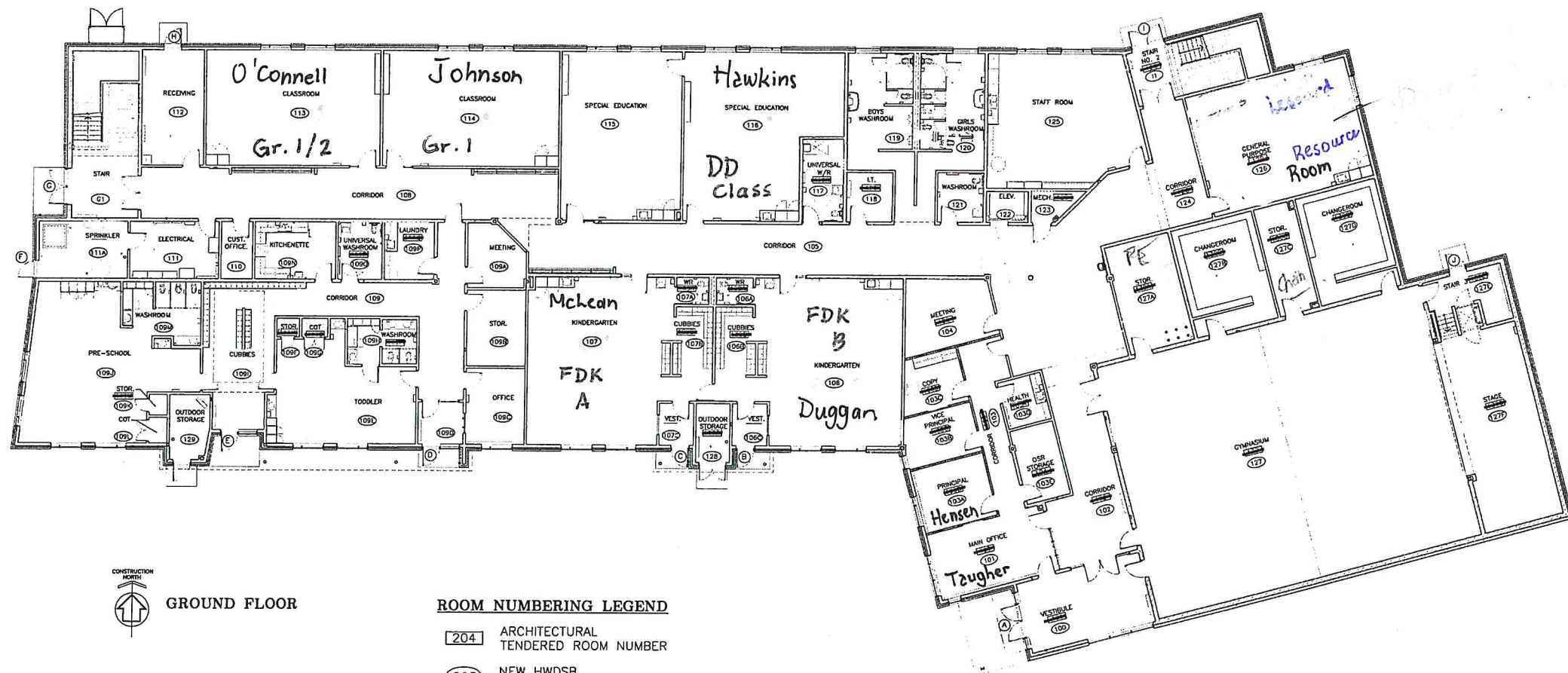
No.	DATE	DESCRIPTION
REVISIONS		

HAMILTON-WENTWORTH DISTRICT SCHOOL BOARD  
 SVEDAS / ARCHITECTS INC.  
 1084 BOTANICAL DRIVE, TEL. (905) 308-7771      BURLINGTON, ONTARIO L7T 1Y2 FAX. (905) 308-7773

**GREENSVILLE ELEMENTARY SCHOOL**  
 625 HARVEST ROAD  
 GREENSVILLE ONTARIO

**REVISED ROOM NUMBERS SECOND FLOOR PLAN**

SCALE	DRAWN	PROJECT No.
1:150	LMR	118810
DATE	CHECKED	DRAWING No.
JAN. 29, 2020	AVS	SKF-A19



CONSTRUCTION NORTH  
  
 GROUND FLOOR

**ROOM NUMBERING LEGEND**  
 204 ARCHITECTURAL TENDERED ROOM NUMBER  
 203 NEW HWDSB ROOM NUMBER

No.	DATE	DESCRIPTION
REVISIONS		



**SVEDAS / ARCHITECTS INC.**

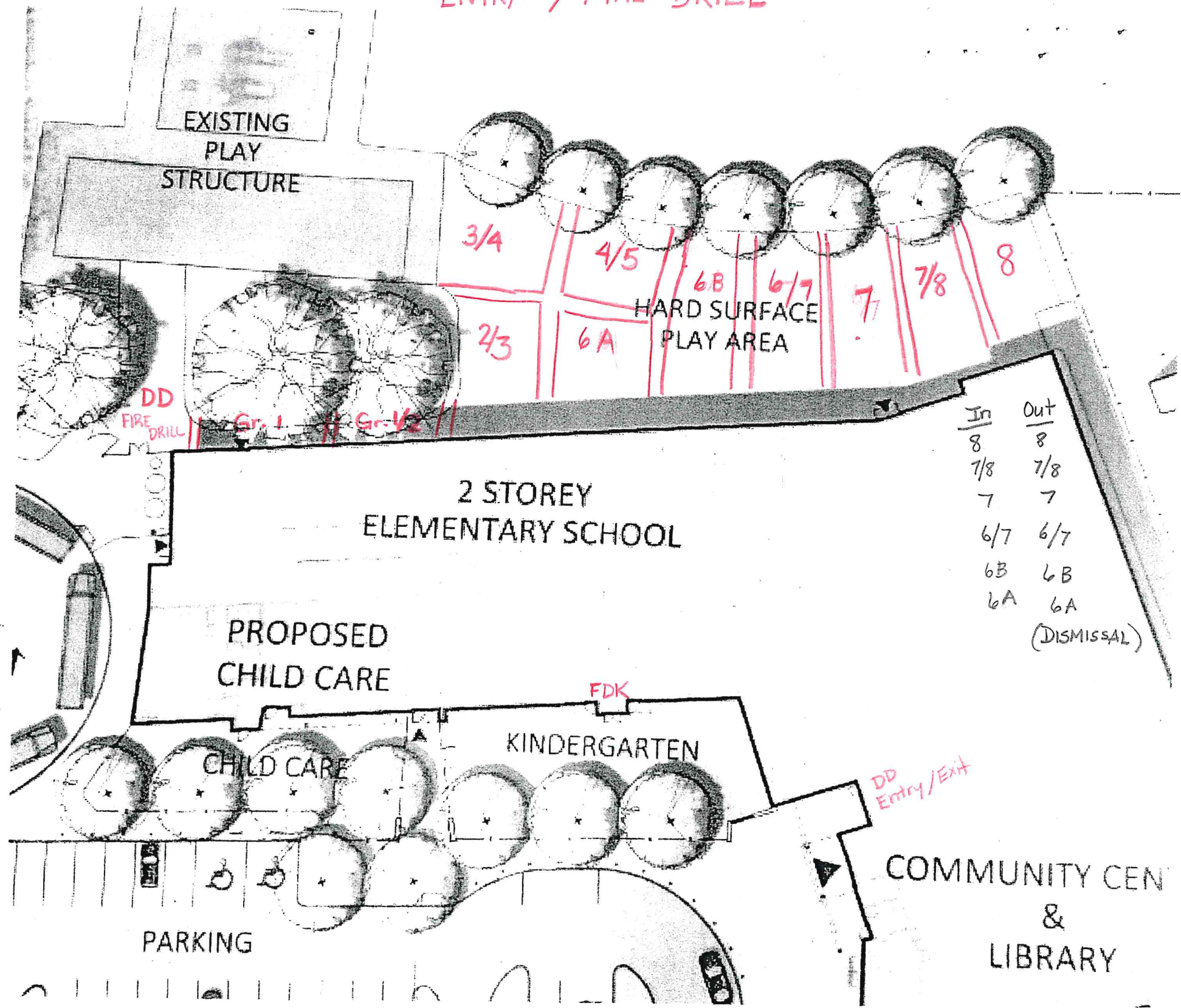
1084 BOTANICAL DRIVE, BURLINGTON, ONTARIO L7T 1Y2  
 TEL. (905) 308-7771 FAX. (905) 308-7773

**GREENSVILLE  
 ELEMENTARY SCHOOL**  
 625 HARVEST ROAD  
 GREENSVILLE ONTARIO

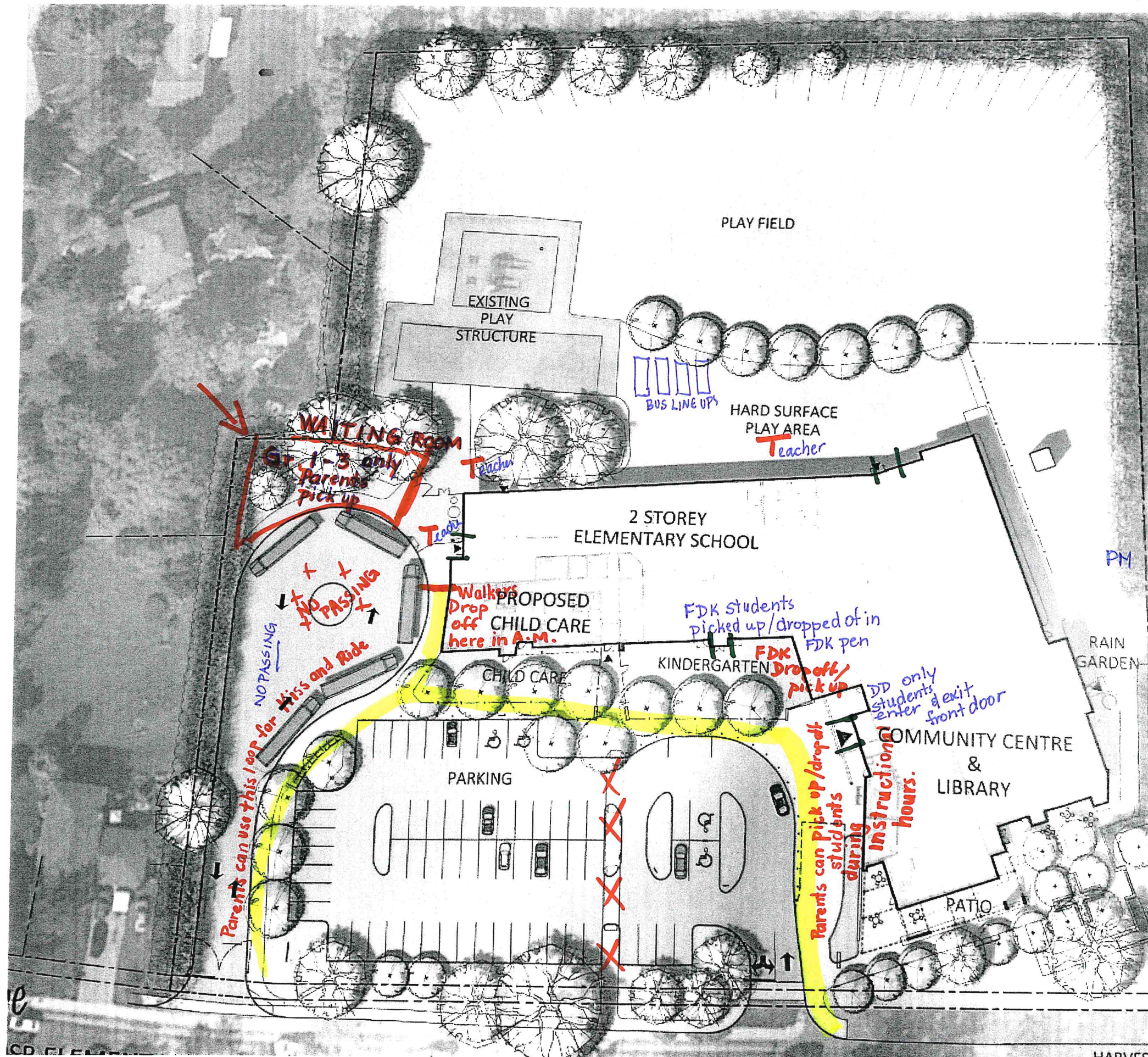
**REVISED ROOM NUMBERS  
 GROUND FLOOR PLAN**

SCALE	DRAWN	PROJECT No.
1:150	LMR	118810
DATE	CHECKED	DRAWING No.
JAN. 29, 2020	AVS	SKF-A18

ENTRY / FIRE DRILL



In	Out
8	8
7/8	7/8
7	7
6/7	6/7
6B	6B
6A	6A
	(DISMISSAL)



AM -  
 FDK parents - drop children off at FDK pen.  
 All other students can be brought - walked in to red line — Teachers will supervise after drop off point  
 If your children can take the bus - please do.  
 Bus drop off in loop - No CARS PASSING  
 Kiss & Ride open - BUSES take PRIORITY

---

(Early dismissal to start - by teachers)  
 PM 2:35 Primary students walked out to school yard → Walkers dismissed to family pick up for Gr. 1-3.5 All others to bus lines. 'eyes on'  
 2:40 Jr. Int. student dismissed Can pick up primary siblings if they are walkers  
 -All other Jr./Int. students to buses/walk to meet families at designated space.  
 2:45 Bus students load.  
 All students supervised until 3pm.