

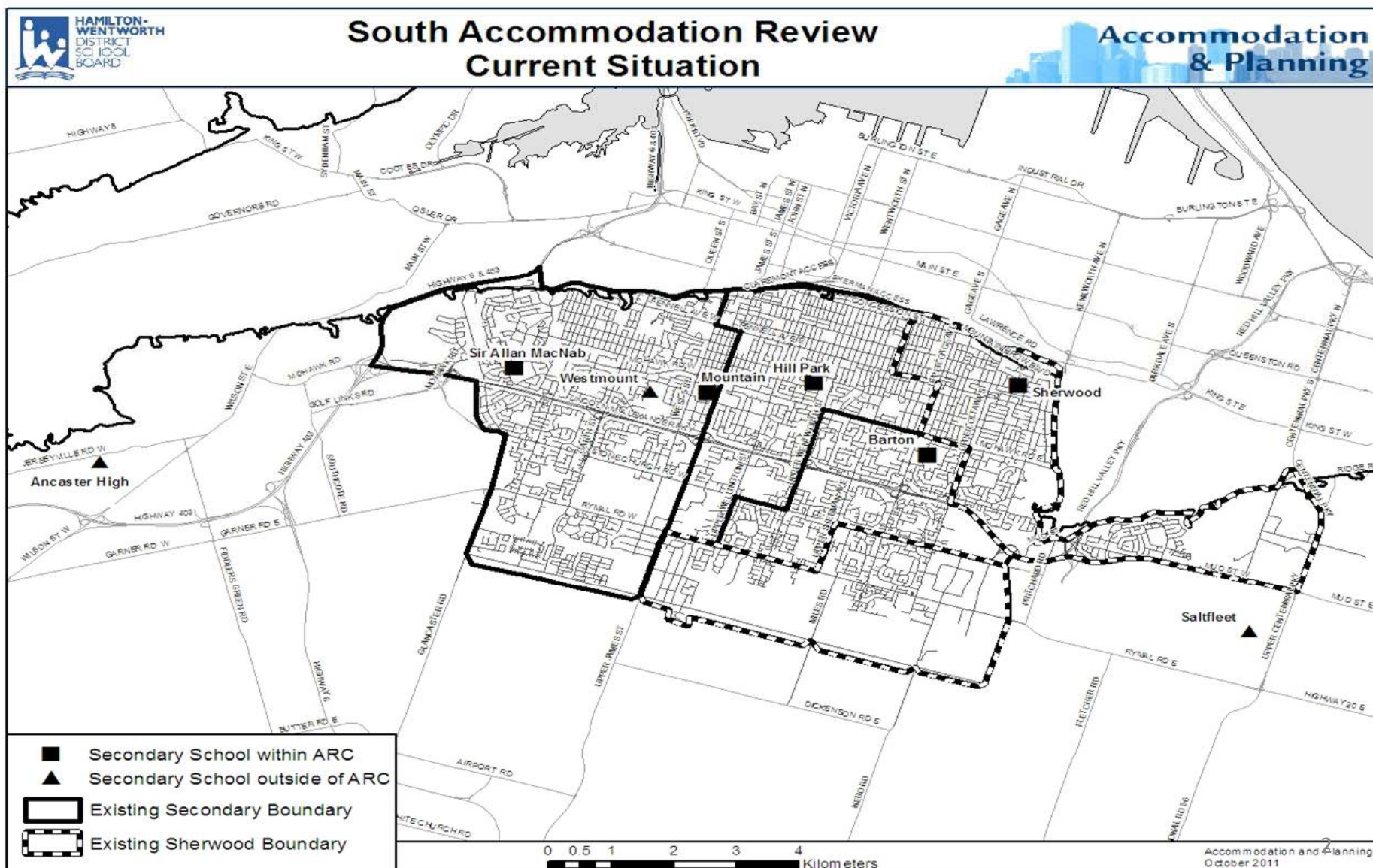


## **Secondary Pupil Accommodation Review**

# **South Accommodation Review Committee**

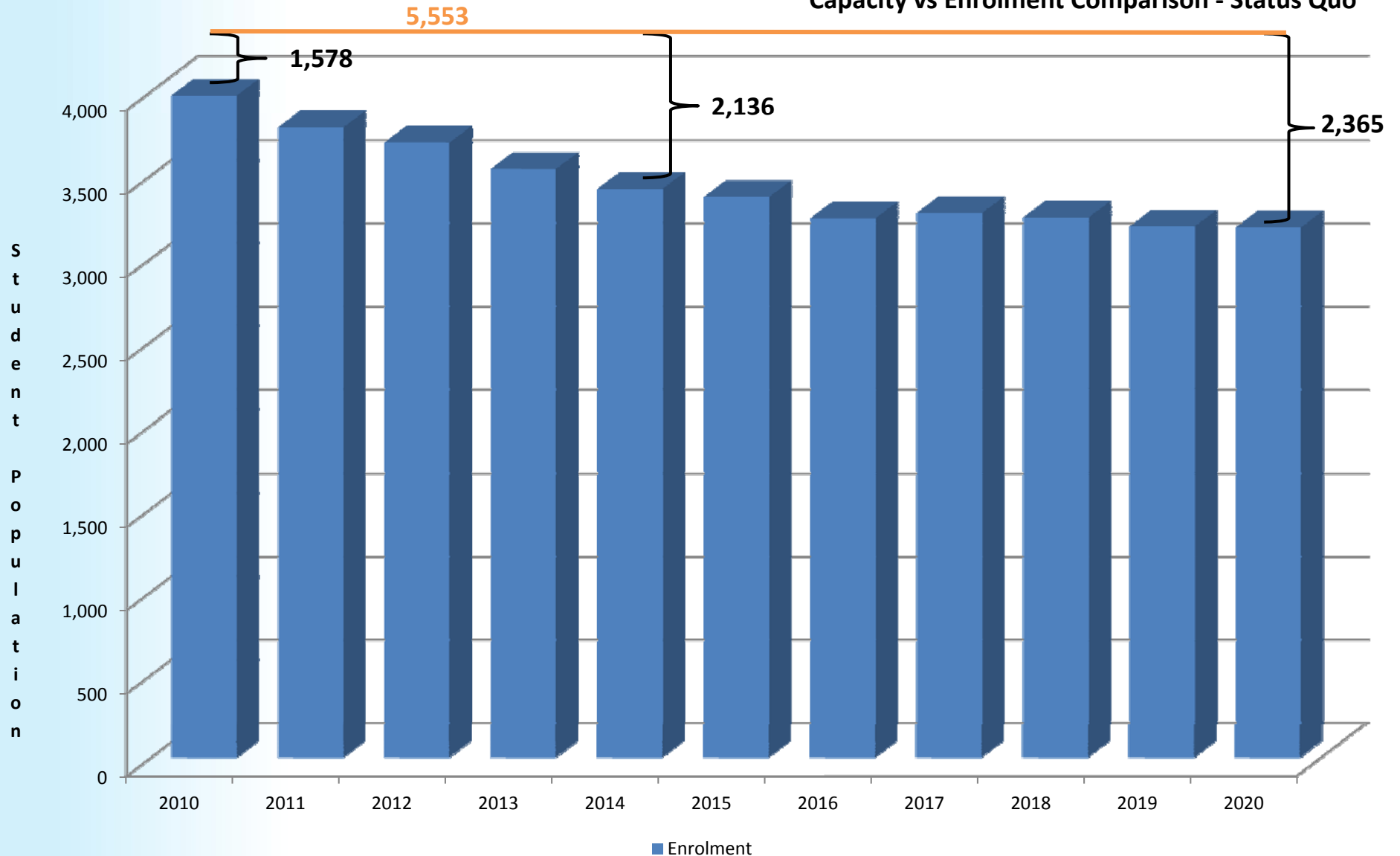
Barton – Hill Park – Mountain – Sherwood – Sir Allan MacNab

Hamilton-Wentworth District School Board  
Committee of the Whole  
February 13, 2012





**Capacity vs Enrolment Comparison - Status Quo**





# South ARC Recommended Options



## South ARC Recommended Options:

### Concept B:

- The closure of Sherwood and Sir Allan MacNab in June 2015.
- Construction of a new secondary school, located south of the Lincoln Alexander Parkway with a target opening date of September 2015.
- Mountain would remain open with additional appropriate programs moved to that location.

### Concept C:

- Closure of Hill Park, Mountain and Sherwood in June 2015.
- Construction of a new secondary school, located south/east of the Lincoln Alexander Parkway with a target opening date of September 2015.
- The Mountain program would be relocated to the new school.



## South ARC Recommended Options (Con't):

### Concept D:

- Closure of Barton and Sir Allan MacNab in June 2015.
- Construction of a new secondary school, located south/east of the Lincoln Alexander Parkway with a target opening date of September 2015.
- Mountain would remain open with additional appropriate programs moved to that location.

### Concept E:

- Closure of Mountain, Sherwood and Sir Allan MacNab in June 2015.
- Construction of a new secondary school, located south/east of the Lincoln Alexander Parkway with a target opening date of September 2015.
- The Mountain program would be relocated to the new school.



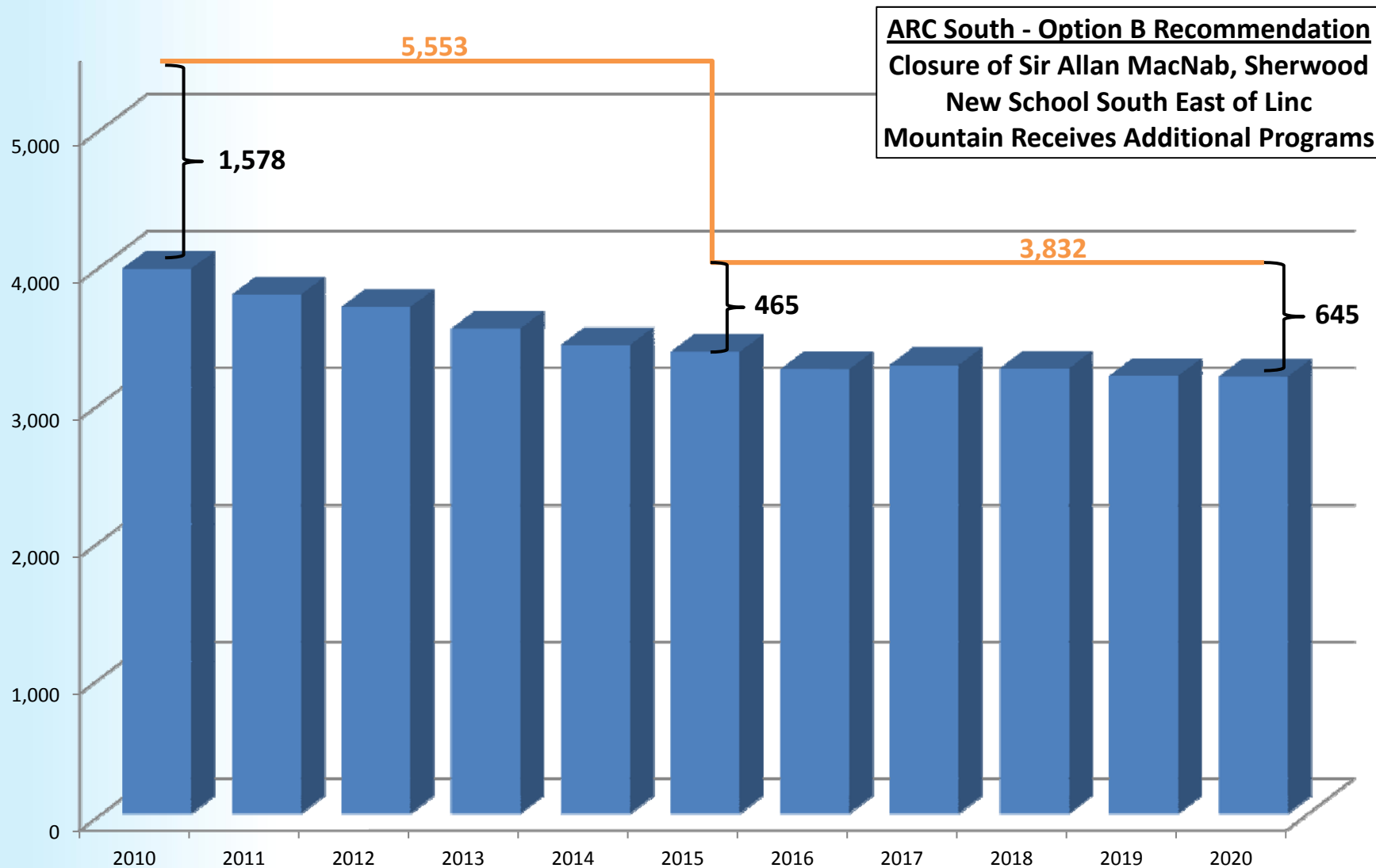


## South ARC Recommended Options (Additional Consideration):

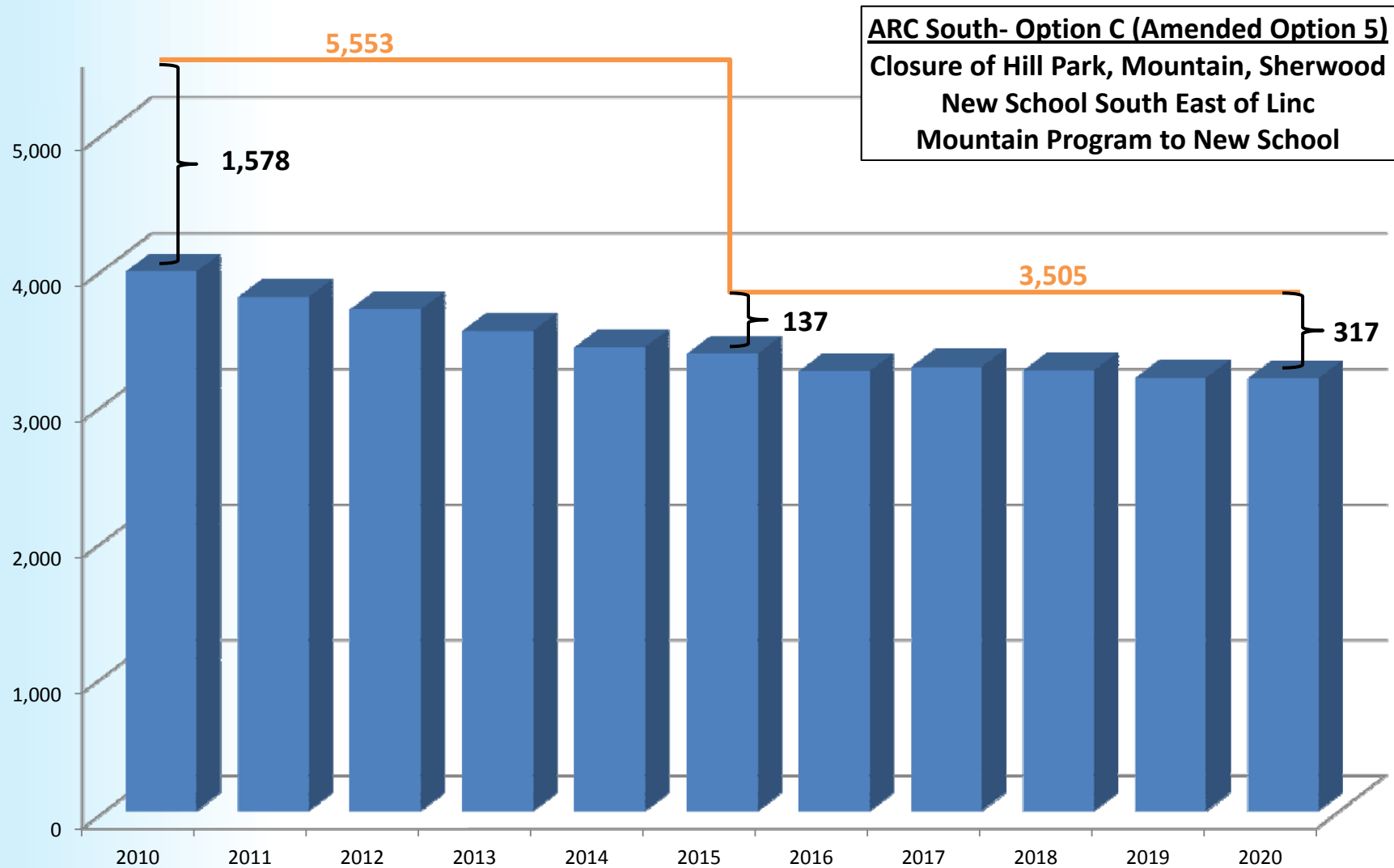
**Please Note:** To further enhance Options B, D and E, the South ARC would like Trustees to engage the Westmount school community about the possibility of relocating the self-paced, self-directed program to Hill Park. The Hill Park site would provide a central location for the self-paced, self-directed program, while the Westmount site is ideally situated to service the students residing on the west mountain.





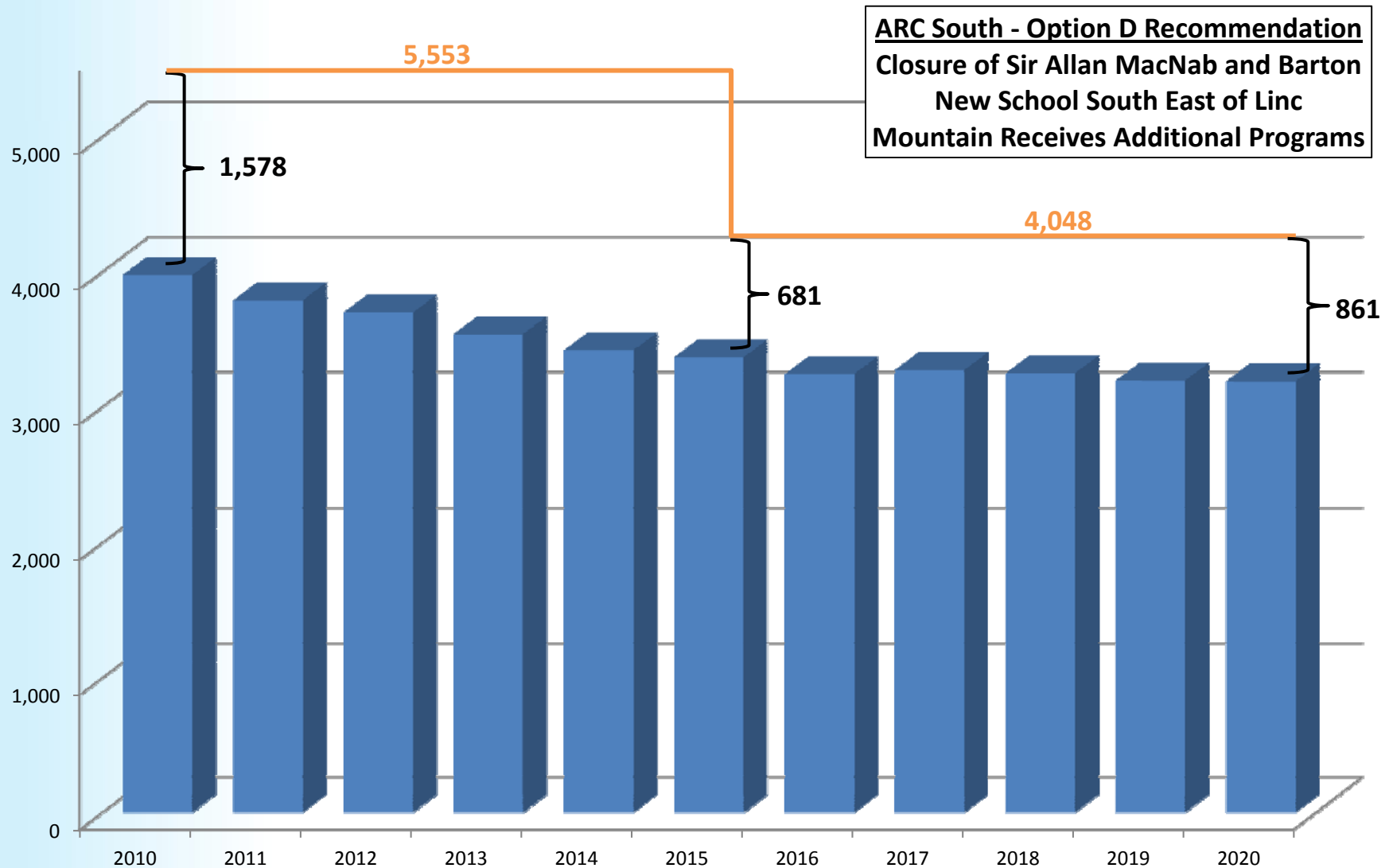






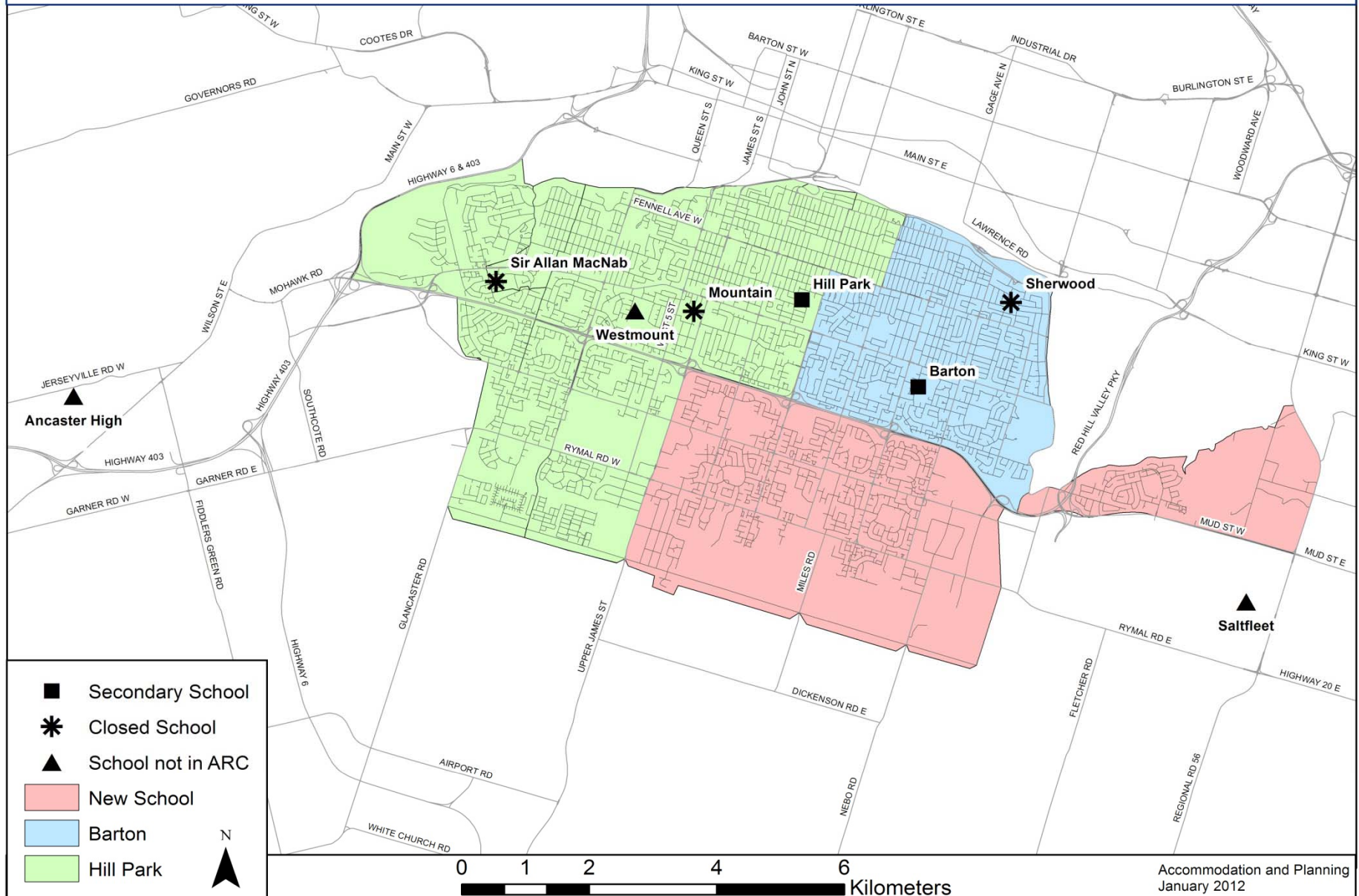


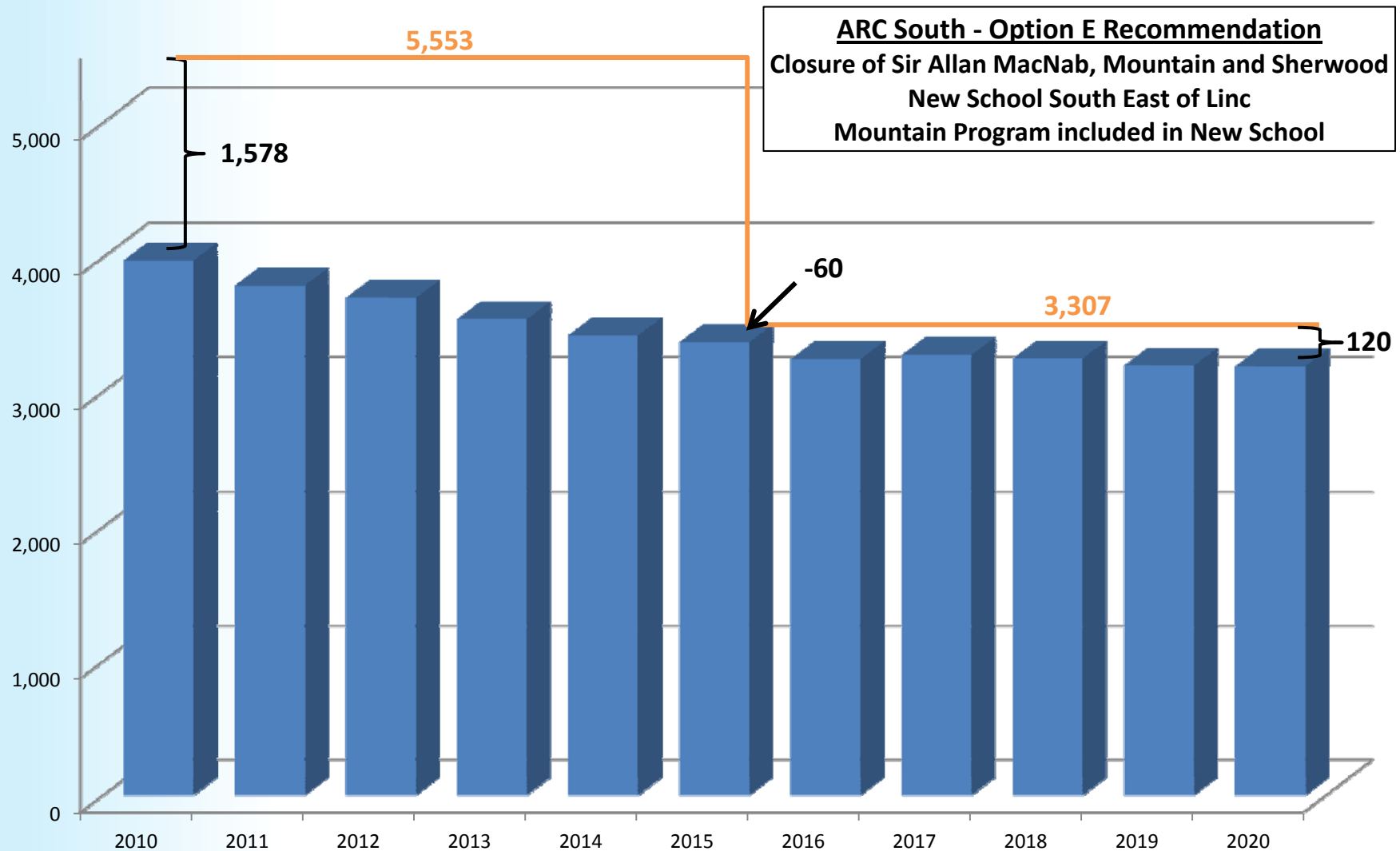






**ARC South - Option E  
Closure of Sir Allan MacNab, Sherwood and Mountain  
New School South East of Linc  
Mountain Program included in New School**







## Estimated Cost of South ARC Options:

	Estimated Costs	Option - B	Option - C	Option - D	Option - E
1.	New Construction (1,000 Pupil Place School)	\$25,415,442	\$25,415,442	\$25,415,442	\$25,415,442
2.	Land Acquisition (15 acre site @ \$400,000/acre)	\$6,000,000	\$6,000,000	\$6,000,000	\$6,000,000
3.	Program Strategy	\$950,000	\$385,000	\$1,600,000	\$700,000
4.	Other (i.e. parkland dedication, moving costs, etc.)	\$100,000	\$100,000	\$100,000	\$100,000
5.	Sub Total (Line 1 through 4)	\$32,465,442	\$31,900,442	\$33,115,442	\$32,215,442

	Potential Funding Sources	Option - B	Option - C	Option - D	Option - E
6.	Proceeds of Disposition (PoD) (@ \$400,000/acre)	\$(17,344,000)	\$(13,464,000)	\$(18,104,000)	\$(20,372,000)
7.	Ministry of Education (New School)	\$(25,415,442)	\$(25,415,442)	\$(25,415,442)	\$(25,415,442)
8.	Sub Total (Line 6 +7)	\$(42,759,442)	\$(38,879,442)	\$(43,519,442)	\$(45,787,442)

9.	Potential Cost to the Board (Less Proceeds of Disposition Only)	\$15,121,442	\$18,436,442	\$15,011,442	\$11,843,442
10.	Potential Savings to the Board (Less PoD and Ministry Funding)	\$(10,294,000)	\$(6,979,000)	\$(10,404,000)	\$(13,572,000)



## Legacy Cost of the South ARC Recommendation:

### Estimated Future Renewal Needs / (FCI), 2020:

Secondary School	South ARC Option - B	South ARC Option - C	South ARC Option - D	South ARC Option - E
Barton	\$13,666,882 (55%)	\$13,666,882 (55%)	-	\$13,666,882 (55%)
Hill Park	\$12,930,653 (45%)	-	\$12,930,653 (45%)	\$12,930,653 (45%)
Mountain	\$8,346,829 (61%)	-	\$8,346,829 (61%)	-
Sherwood	-	-	\$32,319,706 (99%)	-
Sir Allan MacNab	-	\$12,726,720 (37%)	-	-
<b>Total</b>	<b>\$34,944,364</b>	<b>\$26,393,602</b>	<b>\$53,597,188</b>	<b>\$26,597,535</b>
<b>Difference Vs. Current Situation</b>	<b>(\$45,046,426)</b>	<b>(\$53,597,188)</b>	<b>(\$26,393,602)</b>	<b>(\$53,393,255)</b>

Facility Condition Index (FCI) is the comparison of the renewal needs of the building relative to the replacement value of the building. The higher the FCI, the poorer the condition of the building.



### Additional Recommendations:

- *That all schools remain open until the new school is ready for occupancy in 2015*
- *That any new school will include space for community partnerships where interest and support is evident.*
- *That the Facilities Management Department consult with the principal, school councils, school communities and specialists to ensure that the existing facilities meet the program strategy and address the renewal needs as outlined by this ARC Committee.*





## Mountain High School Reconfigured Classroom Loading

Number of Space Types	Space Type	Ministry Loading	Reconfigured Loading*
11	Classroom	231	132
1	Computer Room	21	12
2	Family Studies	42	24
1	Resource Room	12	12
2	Science Laboratory	42	24
1	Special Ed	9	9
7	Technical/Vocational	147	84
1	Theatre/Dramatic Arts	21	12
	OTG	525	309

Mountain	525	Ministry Utilization										
		2010	2011	2012	2013	2014	2015	2016	2017	2018	2019	2020
Total		179	196	193	188	184	182	176	176	175	171	171
Utilization		34%	37%	37%	36%	35%	35%	34%	33%	33%	33%	33%

Mountain	309	Reconfigured Utilization*										
		2010	2011	2012	2013	2014	2015	2016	2017	2018	2019	2020
Total		179	196	193	188	184	182	176	176	175	171	171
Utilization		58%	63%	62%	61%	60%	59%	57%	57%	57%	55%	55%

**\* Assumption is that all classes are loaded as resource rooms which have a capacity of 12**

Price for New Mountain School: 525 x 171 sq feet x \$189.15 = **\$ 16,980,941.00**. Note that this does not include price of land and demolition of current facility. (Ministry of Education minimum size of Secondary School is 300 OTG)

**Note: October 2011 Enrolment of Mountain Secondary - 174**



## **Keep Mountain Program as a Stand-alone Program/Move the Mountain Secondary School Program to the New School**

- Pros and Cons**

\* For a complete list of “Pros and Cons” please see Appendices S-10 and S-11 of the ARC Report



### Mountain Secondary School:

- *In options which propose the closure of Mountain Secondary School the South ARC is recommending that the Board create a committee post-ARC comprised of school council members, students, parents, staff, and community members to inform direction around the transition, program, facilities, and supports necessary for the success of the Mountain students.*



### Program Recommendations:

- *That there be an equitable distribution of athletic programs (health and wellness), of AP programs, programs of choice and SHSMs across the cluster.*
- *That there be a Secondary FI program be centrally located within the South ARC cluster.*
- *That there be appropriate Tier 2 and Tier 3 interventions programs within the South ARC cluster to adequately service the number of students that would require them.*



## Additional Considerations:

- *If the Board is offering programs of choice Board wide and across the cluster then they need to provide transportation equitably to all students.*
- *To further enhance **Options B, D and E**, the South ARC would like Trustees to engage the Westmount school community about the possibility of relocating the self-paced, self-directed program to Hill Park. The Hill Park site would provide a central location for the self-paced, self-directed program, while the Westmount site is ideally situated to service the students residing on the west mountain.*





### Additional Considerations (con't):

- *The South ARC has recommended that the new school be constructed on an appropriate site located south/east of the Lincoln Alexander Parkway. Although the Hamilton-Wentworth District School Board does not currently own a suitable site in this location, the South ARC believes that locating a school south/east of the Lincoln Alexander Parkway is ideal and that constructing on one of the existing Board owned sites would not keep the school central to its proposed boundary.*
- *Updated secondary 2011/12 enrolments for all secondary schools were provided to the ARC*