

Secondary Pupil Accommodation Review Committee

Demographic and Enrolment Trends

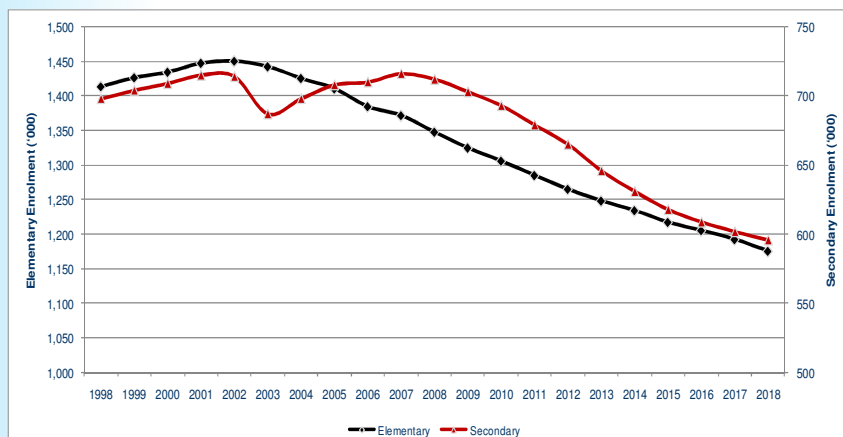
North ARC Working Group Meeting #3
March 22, 2011

Provincial Perspectives

- After peaking in 2002, elementary enrolment declined by approximately 5% or 80,000 by 2007
- Between 2007 and 2018, Province-wide elementary enrolment is projected to decline by an additional 14% or 197,000 students
- Between 1998 and 2007 secondary enrolment increased by 3% or 18,000 students
- Province-wide secondary enrolment is projected to decline by 17% or approximately 120,000 students by 2018

Provincial Perspectives

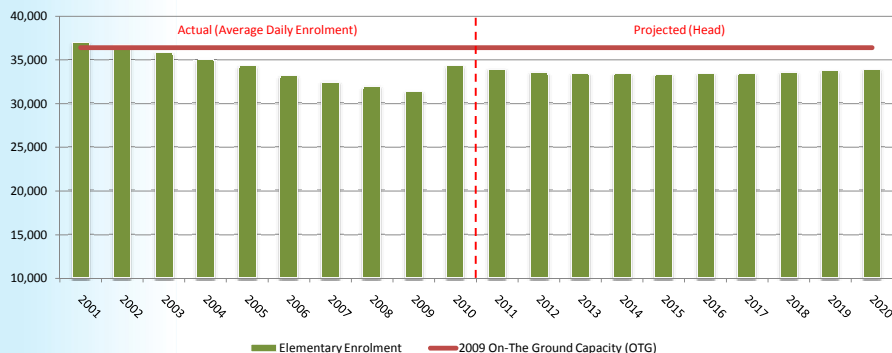
Historical and Projected Elementary and Secondary Enrolment



Historical and projected totals are calculated using Average Daily Enrolment (ADE)
Source: Watson & Associates Economists Ltd.

HWDSB Perspective

Historical and Projected Elementary Enrolment



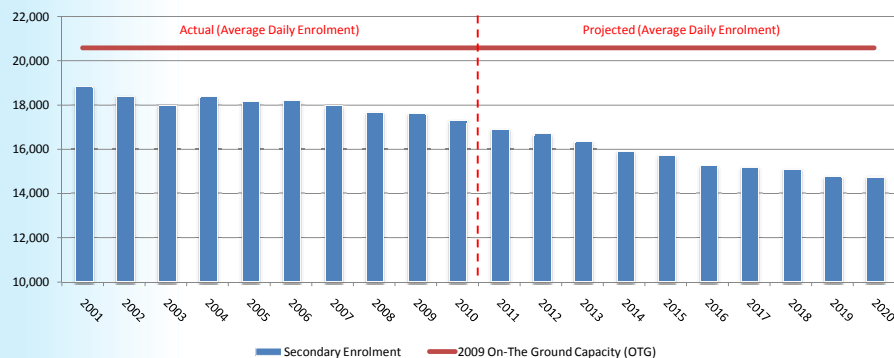
- Between 2001 and 2009 elementary enrolment decreased by 5,543 students or 15%
- Long-term projections indicate that enrolment will decrease by an additional 413 students by 2020
- The impact of this future enrolment trend will result in approximately 2,500 surplus pupil places

NOTE: Projections assume the full implementation of ELP in the 2010 school year
SOURCE: HWDSB, Planning Department



HWDSB Perspective

Historical and Projected Secondary Enrolment



- Between 2001 and 2009 secondary enrolment decreased by 1,210 students or 6%
- Long-term projections indicate that enrolment will decrease by an additional 2,523 students or 15% by 2020
- The impact of this future enrolment trend will result in approximately 5,800 surplus pupil places

SOURCE: HWDSB, Planning Department

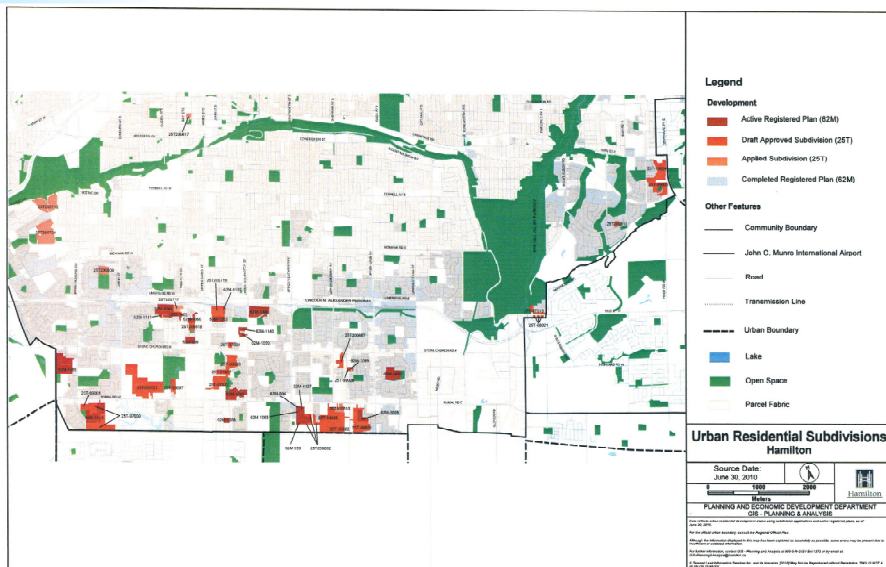


Components of Enrolment Projections

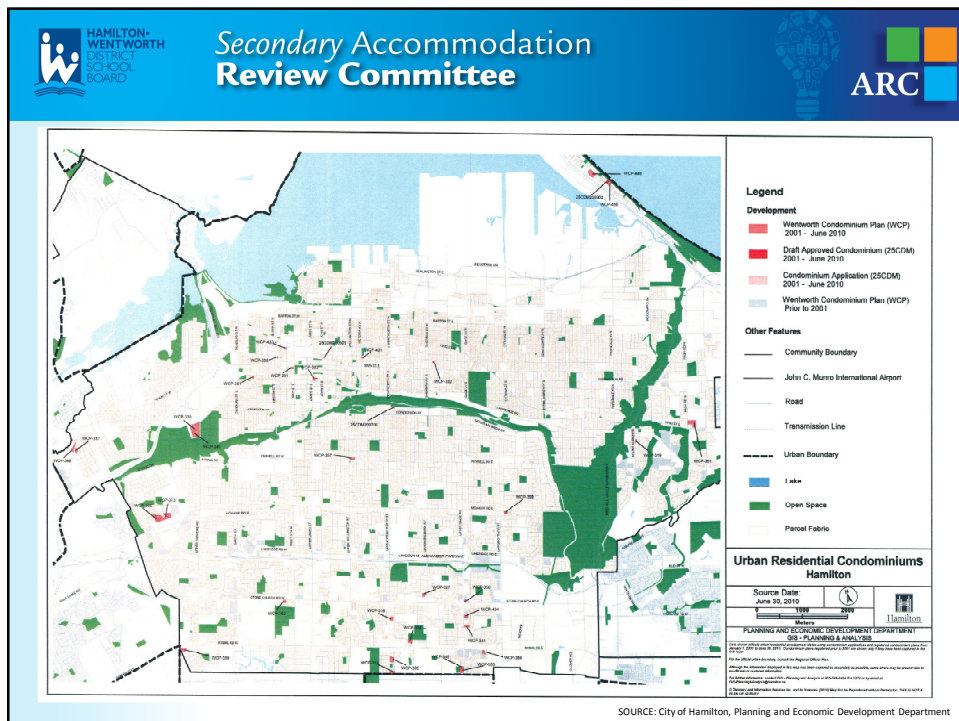
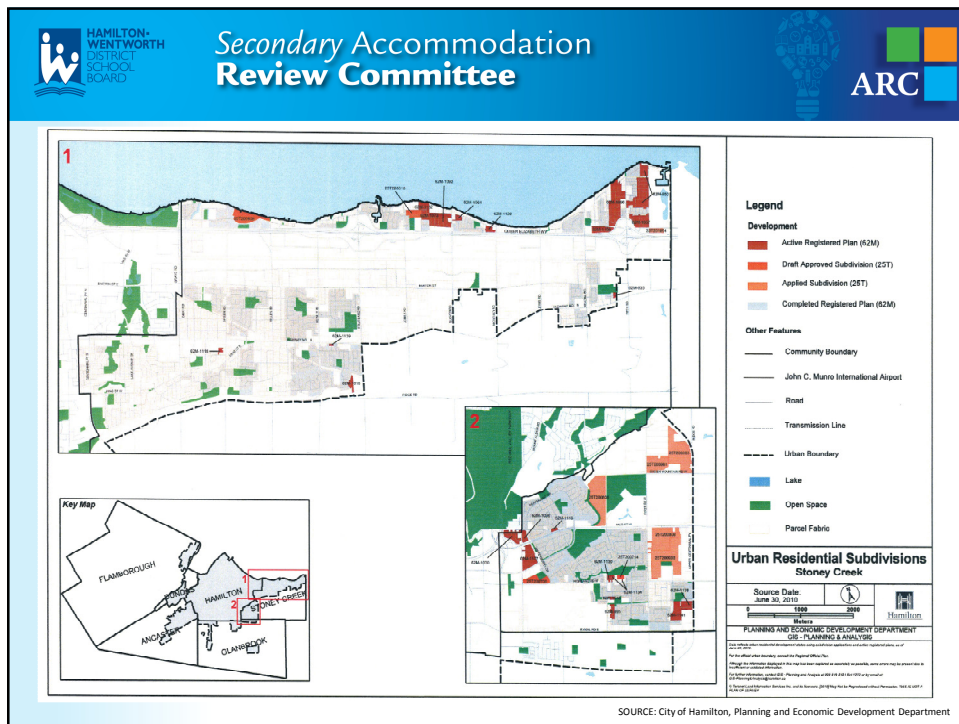
- **Historical Enrolment Data**
 - Hamilton Wentworth District School Board (HWDSB) historical enrolment data by-grade, by-school
 - Historical enrolment from co-terminous boards
- **JK Enrolment**
 - Watson & Associates Economists Ltd. (W&A) in-house demographer develops single year of age projection by region/ municipality
 - Statistics Canada custom tabulation summarizes the population for each Census Tract by age (for 1996, 2001 and 2006)
- **Development Information**
 - Most recent, municipally approved development forecast
 - Units in the development approval process
 - Discussions with municipal planning staff (Summer 2010)
- **Develop Elementary and Secondary Yields**
- **Apportionment Rates**

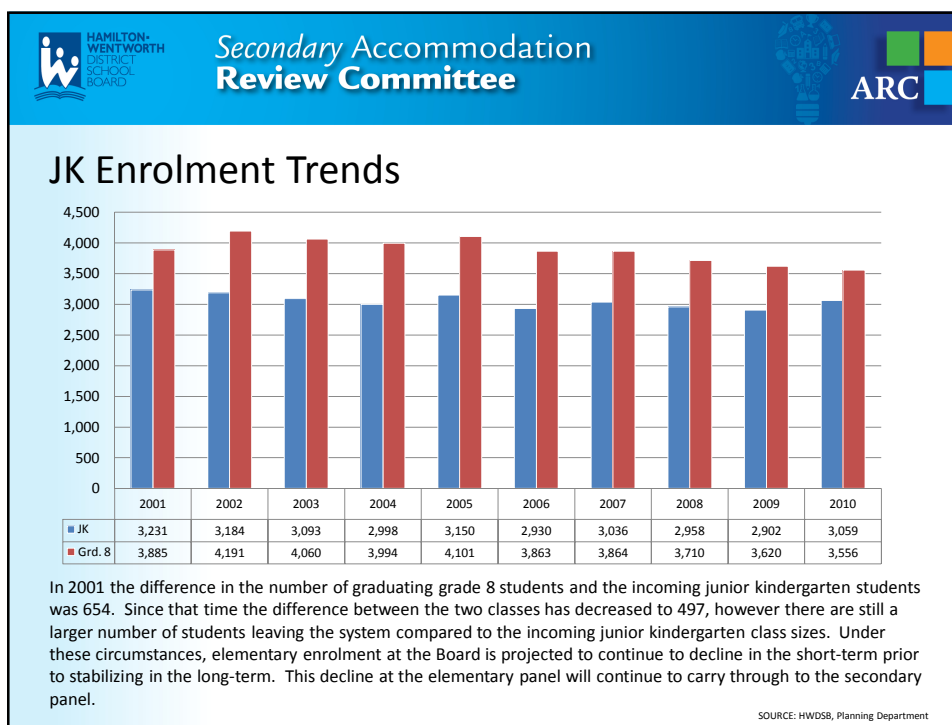
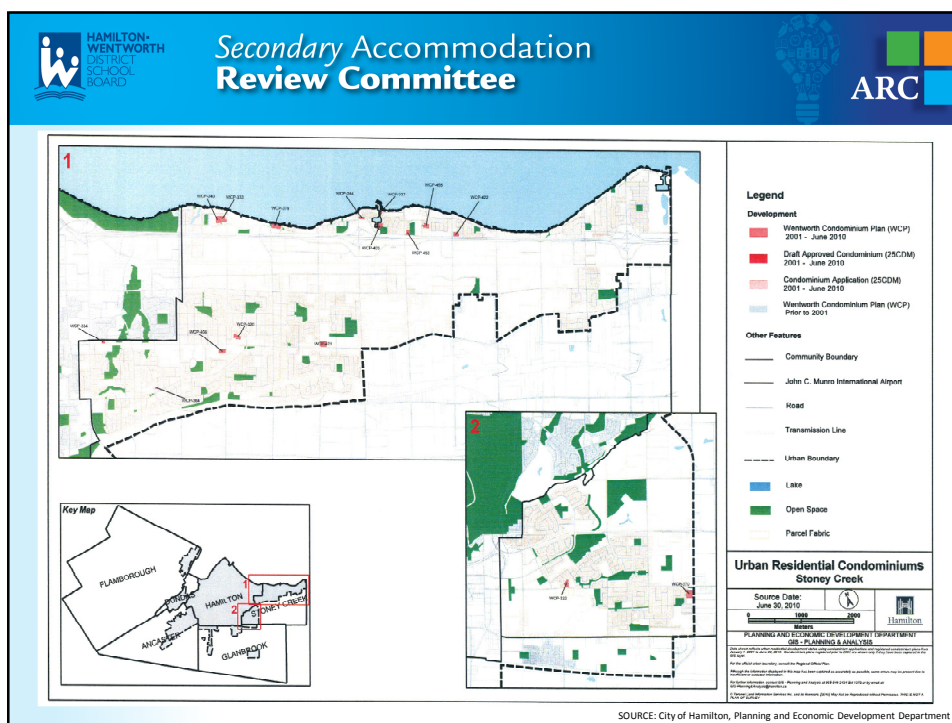
Demographic and Housing Trends

- **New Housing Units**
 - 10,500 (approx.) new housing units constructed between 1996 and 2001
 - 6,200 (approx.) new housing units constructed between 2001 and 2006
- **Elementary School Age Population**
 - Between 2001 and 2006 the elementary school age population per household decreased throughout the jurisdiction of the HWDSB
 - Most notable decreases in former Townships of Dundas, Glanbrook and the City of Hamilton
- **Secondary School Age Population**
 - Between 2001 and 2006 the secondary school age population per household remained stable throughout the jurisdiction of the HWDSB
 - Largest increase experienced in former Township of Flamborough
 - Decreases in former Townships of Ancaster, Glanbrook and City of Stoney Creek
- **Birth Data and Fertility Rates**
 - The number of live births between 2001 – 2007 decreased from 5,291 to 5,081
 - Between 2005 – 2007 fertility rates decreased slightly from 1.372 to 1.368
 - Females between the ages of 30-34 accounted for 34% of the total live births in 2007



SOURCE: City of Hamilton, Planning and Economic Development Department





Apportionment Rates

Elementary Apportionment

HWDSB Elementary Students						
2004/ 2005	2005/ 2006	2006/ 2007	2007/ 2008	2008/ 2009	2009/ 2010	Change
34,999	34,242	33,109	32,444	31,884	31,372	-3,627
65.3%	65.1%	64.7%	64.6%	64.5%	64.5%	-0.8%

HWDSB Elementary Students						
2004/ 2005	2005/ 2006	2006/ 2007	2007/ 2008	2008/ 2009	2009/ 2010	Change
18,638	18,351	18,034	17,794	17,496	17,295	-1,343
34.7%	34.9%	35.3%	35.4%	35.5%	35.5%	0.8%

Secondary Apportionment

HWDSB Secondary Students						
2004/ 2005	2005/ 2006	2006/ 2007	2007/ 2008	2008/ 2009	2009/ 2010	Change
18,233	17,977	18,091	17,877	17,648	17,582	-651
66.0%	64.9%	64.4%	63.8%	63.2%	62.4%	-3.6%

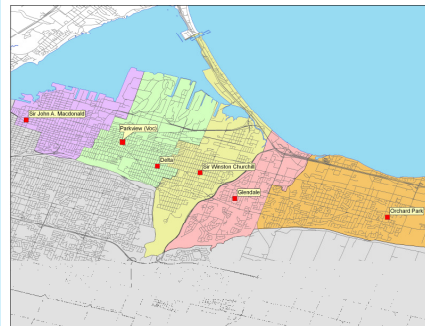
HWDSB Secondary Students						
2004/ 2005	2005/ 2006	2006/ 2007	2007/ 2008	2008/ 2009	2009/ 2010	Change
9,398	9,710	9,985	10,136	10,270	10,598	1,200
34.0%	35.1%	35.6%	36.2%	36.8%	37.6%	3.6%

Factors influencing apportionment levels at the HWDSB include:

- Open access (secondary only)
- New school facilities or program offerings
- Ability to service rural communities

SOURCE: Ministry of Education, School Board Funding Projections for the 2010-11 School Year (Spring 2010)

North ARC Cluster of Schools



Development and Yield Information (1996 – 2006):

- 775 new units constructed (Avg. 78 units/ year)
- Elementary yield decreased from 0.334 to 0.271
- Secondary yield slightly decreased from 0.124 to 0.121

General Observations:

- Decline experienced in the elementary school age population will impact secondary enrolments
- Very little potential for new development in the area west of the Red Hill Valley Parkway
- Majority of future growth forecasted for the Stoney Creek community

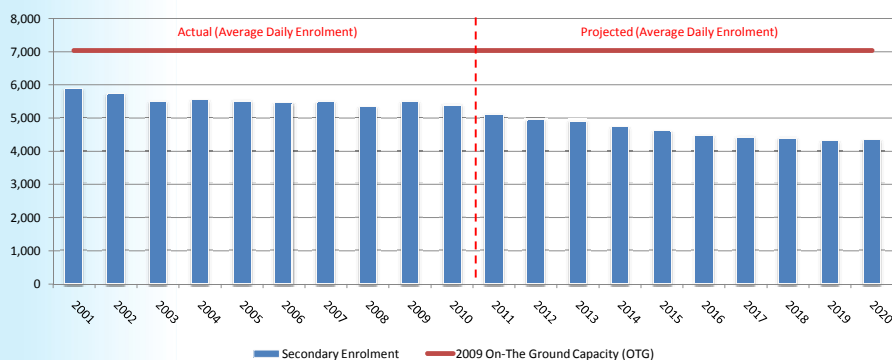
Age	1996 Census Population	2001 Census Population	2006 Census Population	Change 1996 - 2001	% Change 1996 - 2001	Change 2001 - 2006	% Change 2001 - 2006
0 – 3 Pre-School Aged	11,065	9,310	7,945	-1,755	-15.9%	-1,365	-14.7%
4 – 13 Elementary School-Aged	26,075	25,425	21,220	-650	-2.5%	-4,205	-16.5%
14 – 17 Secondary School-Aged	9,695	10,005	9,470	310	3.2%	-535	-5.3%

Source: Statistics Canada, 1996, 2001 and 2006 Census Profile Data



North ARC Cluster Perspective

Historical and Projected Secondary Enrolment



- Between 2001 and 2009 secondary enrolment decreased by approx. 400 students or 7%
- Long-term projections indicate that enrolment will decrease by an additional 1,000 students or 20% by 2020
- The impact of this future enrolment trend will result in approximately 2,700 surplus pupil places

SOURCE: HWDSB, Planning Department



Summary

Projection Methodology

- There are a number of variables that are factored into the creation of enrolment projections
- Projections are not an exact science
- When reviewing enrolment projections the focus should be on the long-term trends as opposed to the exact numbers

Provincial Perspective

- Elementary enrolment peaked in 2002, with secondary enrolment peaking several years later
- There are still areas of growth throughout the Province but not enough to offset the decline being experienced in maturing communities

HWDSB Perspective

- Elementary enrolment decreased by approximately 5,500 students between 2001 and 2009
- During the same time period, enrolment at the secondary panel decreased by 1,200 students
- The decline experienced at the elementary panel continues to impact secondary enrolments
- North Cluster is projected to have approximately 2,700 surplus pupil places by 2020