

Ancaster Urban Residential Developments as of December 31, 2010

Subdivisions By Dwelling Type						
Number	Name	Single Detached	Semi-Detached	Townhouse	Apartment	Total
Pending						
25T-89009	Golf Stream Manor	9	0	0	0	9
25T-89017	Perth Park Heights	4	0	0	0	4
25T200403	Lime Kiln	41	0	0	0	41
25T200506	Southcote Woodlands, Ph.2	11	0	0	0	11
25T200518	D'Amico/Cimino	68	0	0	81	149
25T200601	Ancaster Meadows, Ph.2	192	78	264	0	534
25T200612	Woodland Manors, Ph.1	64	0	54	0	118
25T200903	Balsam Estates	9	0	0	0	9
25T200906	Southcote Road Subdivision	65	0	0	0	65
Total Pending Subdivision Units		463	78	318	81	940
Draft Approved						
25T200405	Ancaster Meadows, Ph.1	330	20	42	0	392
25T200413	Limestone Manor	49	0	0	0	49
25T200501	Meadowlands of Ancaster, Ph.9	166	0	0	0	166
25T200510	Springbrook Meadows	38	0	0	0	38
25T200622	Springbrook Meadows West	62	0	0	0	62
25T200710	Dussin Estates	9	30	0	0	39
25T200725	Garner Road	78	72	168	334	652
25T200902	Stonehenge Drive	5	0	28	0	33
25T200907	Springbrook Avenue Subdivision	12	0	0	0	12
Total Draft Approved Subdivision Units		749	122	238	334	1,443
Total Subdivision Units		1,212	200	556	415	2,383

Source: GIS - Planning and Analysis, Planning and Economic Development Department, City of Hamilton

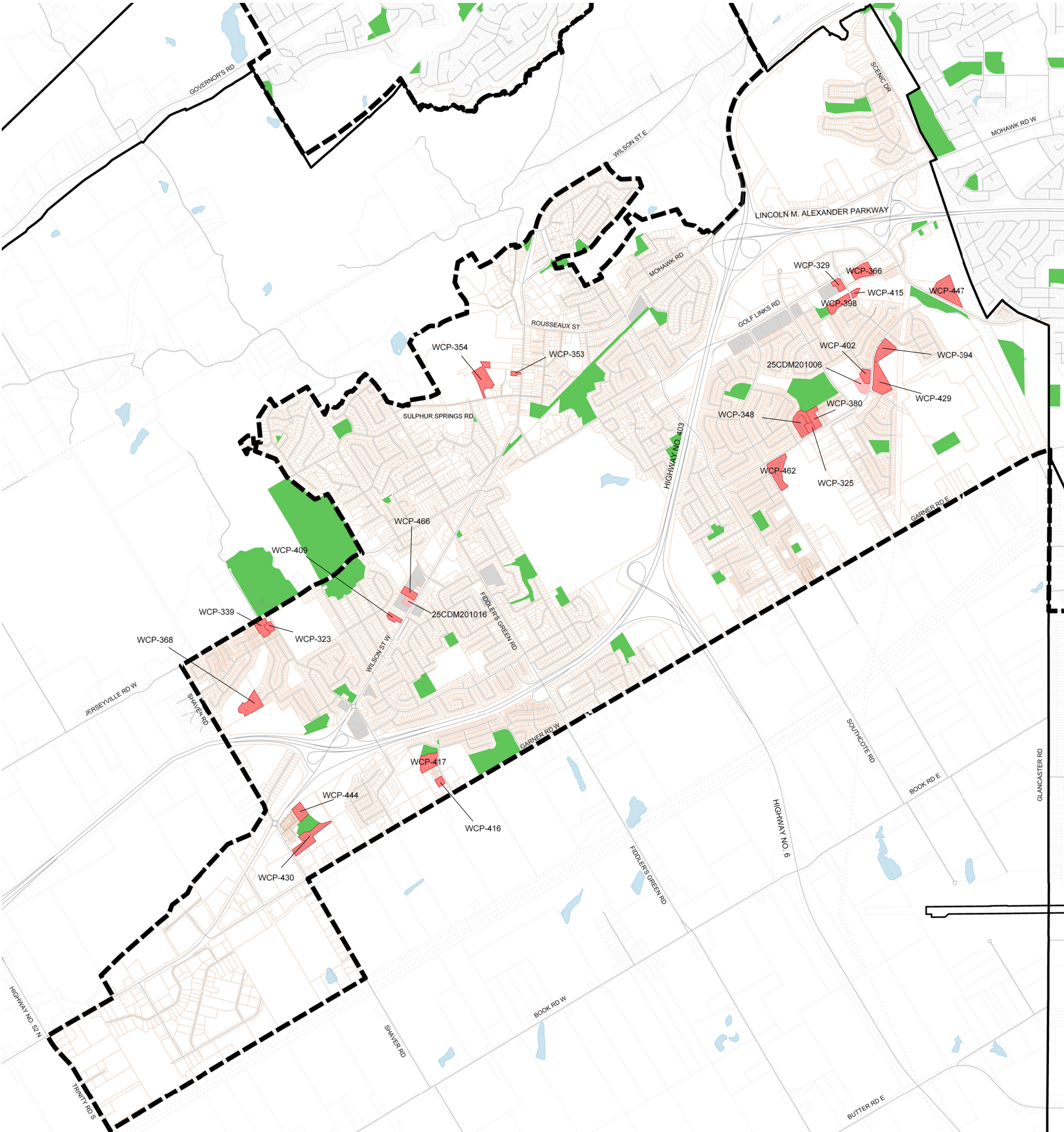
Note: These numbers represent the total number of units in the above pending subdivisions and may include those units already under construction.

Ancaster Urban Residential Developments as of December 31, 2010

Active Registered Plans By Dwelling Type						
Number	Name	Single Detached	Semi-Detached	Townhouse	Apartment	Total
62M-962	Meadowbrook Manors, Ph.3b	84	0	0	0	84
62M-991	Meadowlands of Ancaster, Ph.7a	197	0	40	0	237
62M-1031	Garner Grove Estates	18	0	0	0	18
62M-1055	Sam's Estates	12	0	0	0	12
62M-1065	Meadowlands of Ancaster, Ph.8	159	0	16	0	175
62M-1084	Big Creek Estates	7	0	0	0	7
62M-1100	Almas Subdivision	27	0	0	0	27
62M-1108	Southcote Woodlands, Ph.1	4	0	0	0	4
62M-1112	Springbrook Meadows, Ph.1	24	0	0	0	24
62M-1113	Westvit Estates	103	0	0	0	103
62M-1116	Meadowlands, Ph.10	110	0	0	0	110
62M-1122	Southcote Woodlands, Ph.2	119	0	25	0	144
62M-1135	Ancaster Arbour	215	0	106	0	321
62M-1136	Alaqua	22	0	0	0	22
Total Active Registered Plan Units		1,101	0	187	0	1,288

Source: GIS - Planning and Analysis, Planning and Economic Development Department, City of Hamilton

Note: These numbers represent the total number of units in the above registered plans and may include those units already under construction.



Legend

Development

- Wentworth Condominium Plan (WCP) 2001 - 2010
- Draft Approved Condominium (25CDM) 2001 - 2010
- Condominium Application (25CDM) 2001 - 2010
- Wentworth Condominium Plan (WCP) Prior to 2001

Other Features

- Community Boundary
- John C. Munro International Airport
- Road
- Transmission Line
- Urban Boundary
- Lake
- Open Space
- Parcel Fabric

Urban Residential Condominiums
Ancaster

Source Date:
December 31, 2010

010002000

Meters

PLANNING AND ECONOMIC DEVELOPMENT DEPARTMENT
GIS - PLANNING & ANALYSIS

Data shown reflects urban residential development status using condominium applications and registered condominium plans from January 1, 2001 to December 31, 2010. Condominium plans registered prior to 2001 are shown only if they have been captured in the GIS layer.

For the official urban boundary, consult the Regional Official Plan.

Although the information displayed in this map has been captured as accurately as possible, some errors may be present due to insufficient or outdated information.

For further information, contact GIS - Planning and Analysis at 905-546-2424 Ext 1272 or by email at: GIS-Planning&Analysis@hamilton.ca

© Teranet Land Information Services Inc. and its licensors. [2010] May Not be Reproduced without Permission. THIS IS NOT A PLAN OF SURVEY

Ancaster Urban Residential Developments as of December 31, 2010

Condominiums By Dwelling Type						
Number	Name	Single Detached		Townhouse	Apartment	Total
Pending						
25CDM201006	Sapphire North Condominiums	0	0	29	0	29
25CDM201016	Rembrandt Terrace	8	0	0	0	8
Total Pending Condominium Units		8	0	29	0	37
Draft Approved						
No Plans		0	0	0	0	0
Total Draft Approved Condominium Units		0	0	0	0	0
Total Condominium Units		0	0	0	0	37

Source: GIS - Planning and Analysis, Planning and Economic Development Department, City of Hamilton

Ancaster Urban Residential Developments as of December 31, 2010

Recent Wentworth Condominium Plans By Dwelling Type						
Number	Name	Single Detached	Semi-Detached	Townhouse	Apartment	Total
WCP-323	Meadowbrook Manors	0	0	16	0	16
WCP-325	Stonehenge, Ph.1	0	0	11	0	11
WCP-329	Ancaster Gardens, Ph.3	0	0	0	32	32
WCP-339	Ancaster Townes, Ph.1-4	0	0	35	0	35
WCP-348	Stonehenge, Ph.2	0	0	41	0	41
WCP-353	371 Wilson St E*	0	0	6	0	6
WCP-354	Gates of Ancaster	0	0	36	0	36
WCP-366	Meadowcreek Place, Ph.1-4	0	0	54	0	54
WCP-368	40 Wesleyan Crt*	0	0	45	0	45
WCP-380	232 Stonehenge Dr*	0	0	40	0	40
WCP-394	Landscapes, Ph.1-2	0	0	37	0	37
WCP-398	Tiffany Mews, Ph.1-2	0	0	50	0	50
WCP-402	Stonehenge Townes, Ph.1-2	0	0	24	0	24
WCP-409	Walnut Grove	12	0	0	0	12
WCP-415	Tiffany Glen	0	0	0	10	10
WCP-416	39 Panabaker Dr	0	0	13	0	13
WCP-417	99 Panabaker, Ph.1-3	0	0	49	0	49
WCP-429	Encore, Ph.1-4	0	0	58	0	58
WCP-430	Westbrooke Valley	0	2	73	0	75
WCP-444	Westbrooke Valley, Block 8	0	0	35	0	35
WCP-447	Forest Hill, Ph.1-4	0	20	56	0	76
WCP-462	Kitty Murray Woods	36	0	0	0	36
WCP-466	Stonegate	0	0	0	62	62
Total Recent Wentworth Condominium Plan Units		48	22	679	104	853

* condominium name based on address location

Source: GIS - Planning and Analysis, Planning and Economic Development Department, City of Hamilton