

- Consolidate both Dundas high schools at Parkside site which is in the heart of the town.
- Consider allowing the students to rename the high school to create a new history together.
- The Highland property (18 acres) would provide the highest proceeds of disposition compared to Parkside (4.6 acres) so more money for remaining schools.
- Board's criticism is that Parkside doesn't have room to expand. The smaller Parkside site means the Board would have to build new schools in growth areas such as Waterdown/Flamborough as opposed to putting up a field of portables which is luckily not possible at Parkside. All indications are that enrollment is going to fall anyway. This is positive for students, teachers and parents that there is not room for many portables.
- Parkside option makes for better utilization % because of its lower OTG capacity and will result in better funding because it is at or above capacity into the future.
- Gives students best access to all the town's assets including Driving Park, co-op partnerships, Dundas Valley School of Art, Carnegie Art Gallery, Library branch, Market arena, banking and more all within walking distance of Parkside.
- Many of the kids often walk into town at lunch which is a healthy more than 2 km round trip walk for them and they support town businesses while there.
- Specialty programs such as automotive already handled at Parkside by half day and full day co-op partnerships at local garages within walking distance of Parkside.
- Driving Park (26.5 acres) has 4 baseball diamonds, football field, open field space, skating rink, running trails, tennis courts, big trees for shade to eat lunch under, and huge, safe stopping space for school buses all free to use by school and board since the City of Hamilton pays all costs related to park maintenance.

#### **New proposed Parkside Catchment:**

Sir William Osler, Dundana, Dundas Central, Yorkview, Spencer Valley, Greensville, and Millgrove students.

Seaton catchment would go to Ancaster High School.

- trip only 1 km further to get to Ancaster HS vs Highland HS (Google maps)
- would be 6 km further to go to Parkside so Ancaster is the better option.
- also positive as it increases utilization % at Ancaster HS.

#### **# of Full Size Lockers already at Parkside: 1,118**

- confirmed that all lockers are present. See school layout/locker map given to grade 9s.

#### **Summary of Expected Enrollment with new Catchment:**

- tabulated from Board document, see also attached details.

2013/14	933
2014/15	884
2015/16	868
2016/17	806

#### **Examples of recent similar enrollment years at Parkside:**

1992	975
1997	870
2001	864
2002	856

- Despite the Board's OTG capacity numbers for Parkside of 777, this chart clearly shows that in its recent history Parkside has comfortably handled higher enrollment numbers.
- Historical enrollment information gathered from book "The Wentworth County Board of Education Commemorative Book", from Board document from [hwdsb.on.ca](http://hwdsb.on.ca) and other public library references.

**Transportation:**

Access points through both front and rear of school.

Driving Park already provides ample safe arrival and departure capability for buses, at no cost to the Board - all maintenance and plowing of Driving Park

handled by City of Hamilton resulting again in savings for the Board to spend elsewhere.

Multiple side street exits so no congestion on area roads before or after school.

(Board option: With only 1 road in and out of the Highland area, morning congestion for the community as a whole is a known problem and will only get worse as the school population increases in addition to the 2 other schools on the same road and area residents commuting to work during the morning rush hour. It also causes a serious safety issue if emergency vehicles need to get to Highland quickly during the morning commute times.)

**Expansion:**

Room for maybe 4 portables total or a decent sized wing addition

but that hasn't been necessary in past high enrollment years.

Board says all trends show continued declining enrollment anyway.

Dundas is a valley town that has used up most of its development land.

To the West (out Govenors Road), development is blocked by Conservation Land.

To the North, development is blocked physically by the Escarpment.

To the South, development blocked by both Conservation Land and Escarpment.

To the East (out towards Hwy#6), development is blocked as lands have been recently place within the boundaries of the Niagara Escapment Commission which blocks neighbourhood style development in the future.

Without room for more housing development, population of Dundas is expected to remain stable.

Also rural Flamborough is within the Greenbelt where farmland is protected limiting development.

Large future growth is expected in Waterdown +6,500 homes but ARC told by Board not to consider Waterdown in our decisions.

The Committee may believe that having room to expand would mean building a new addition if enrollment goes up but history shows that Board would just put up a field of portables.

(ie. Waterdown HS now has 22+ portables)

- Dundas growth is unlikely but if growth continues in Flamborough/Waterdown, the Board would have to expand or build a new school in Flamborough/Waterdown since Parkside wouldn't have room for a large number of portables. This is a good thing and a win-win for parents, children and teachers of both communities - no field of portables in Dundas and a new school in the Flamborough/Waterdown where the growth is.

- The Board disapproves with this option because portables are an easy method of dealing with overcapacity which is why they prefer the Highland option.

Choosing Parkside means we prevent the Board from using excessive portables in Dundas in the future.

(Also although boundaries were not defined in Board option, the Board suggested in the 1st public meeting that some students from the Dundas High School catchements may go to Westdale and some to Ancaster.)

For the foreseeable future, Parkside will always be big enough for the town of Dundas and this option keeps all Dundas residents in school in Dundas.

**Tabulation of Projected Enrollment at Parkside from 2013/14 to 2016/17  
using HWDSB document "Summary of Average Class Size By Grade and School"  
dated October 31, 2008**

Tabulation includes all feeder schools of the new proposed catchment for the combined high school at the Parkside site. Seaton catchment would go to Highland.

- in order to project to 2020/21, the Board would need to provide the ARC Committee the same above document from October 31, 2011.
- we can safely assume however that by 2020/21 the overall numbers would be lower.

Explanation: For example, in 2008 the class of 60 grade 7 students from Spencer Valley would then be in grade 12 in 2013 in the chart below. Since Spencer Valley only has grades 6 - 8 that is why projected forward the later charts don't have numbers in them for Spencer Valley. Their numbers are captured by Spencer Valley's feeder schools.

<b>Summary:</b>	<b>2013/14</b>	<b>933</b>
	<b>2014/15</b>	<b>884</b>
	<b>2015/16</b>	<b>868</b>
	<b>2016/17</b>	<b>806</b>

**Projected September 2013/14**

	Grade				
	9	10	11	12	Total
Spencer Valley			70	60	
Greensville	32	43			
Millgrove	21	38			
Dundas Central	50	25	64	79	
Yorkview	34	26			
Osler	61	62	90	115	
Dundana	18	45			
	216	239	224	254	933

**Projected September 2014/15**

	Grade				
	9	10	11	12	Total
Spencer Valley				70	
Greensville	38	32	43		
Millgrove	22	21	38		
Dundas Central	40	50	25	64	
Yorkview	31	34	26		
Osler	37	61	62	90	
Dundana	37	18	45		
	205	216	239	224	884

Projected September 2015/16

	Grade				
	9	10	11	12	Total
Spencer Valley					
Greensville	44	38	32	43	
Millgrove	25	22	21	38	
Dundas Central	31	40	50	25	
Yorkview	27	31	34	26	
Osler	38	37	61	62	
Dundana	43	37	18	45	
	208	205	216	239	868

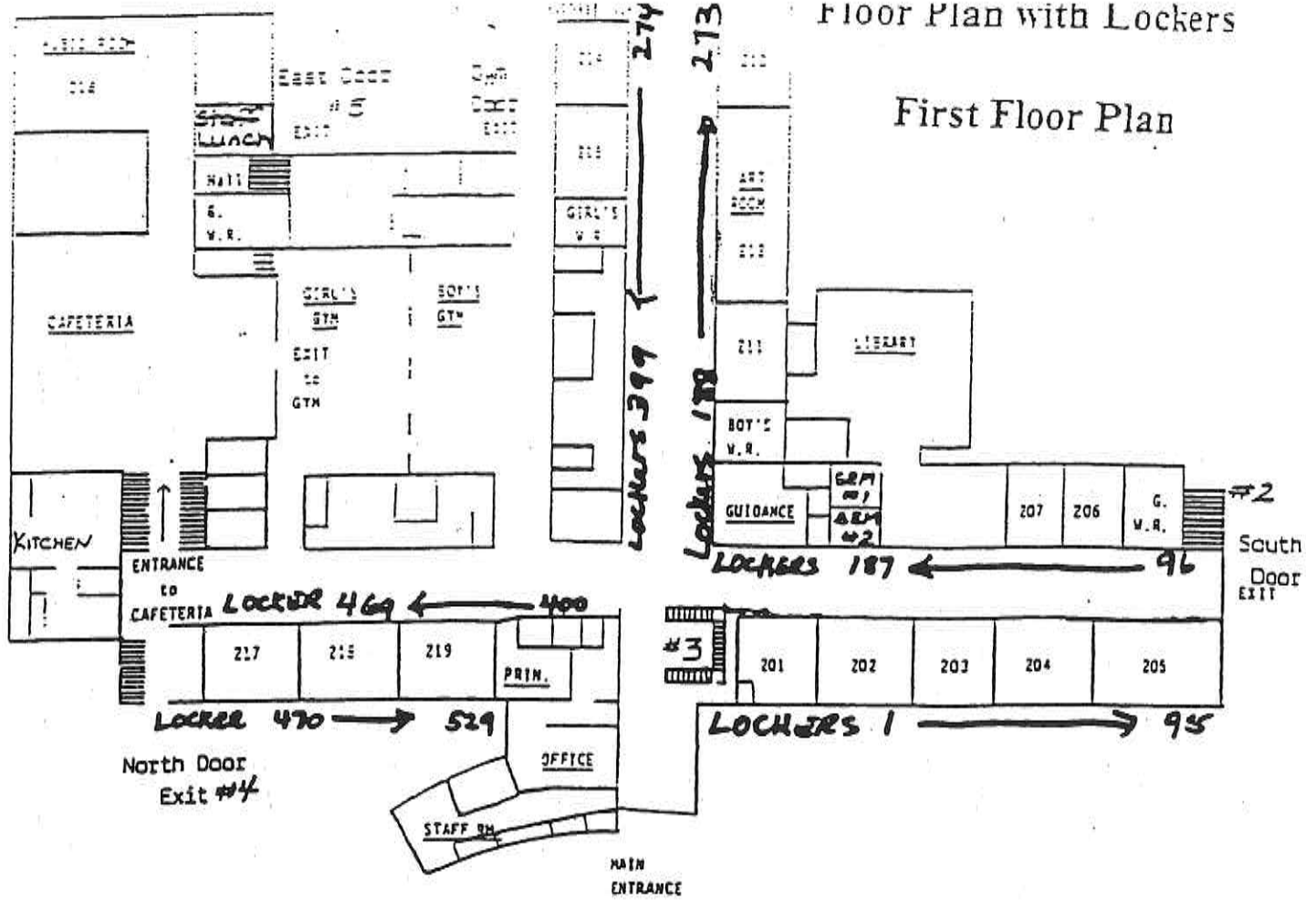
Projected September 2016/17

	Grade				
	9	10	11	12	Total
Spencer Valley					
Greensville	30	44	38	32	
Millgrove	25	25	22	21	
Dundas Central	40	31	40	50	
Yorkview	18	27	31	34	
Osler	41	38	37	61	
Dundana *	23	43	37	18	
	177	208	205	216	806

\* Note: Dundana became a combined english and french immersion school in September 2008. It started with 2- SK classes and 1- grade 1 class of french immersion in addition to all of its english classes for JK - 5. In 2008 therefore, the remainder of the grades (2-5) were all english. For the 2016/17 chart, the grade 9's from Dundana would just be in grade 1 in 2008. The originating document shows 43 students in total in grade 1 with one french immersion grade 1 class and one english grade 1 class. Since the breakdown is not available an educated guess was made at 23 english kids. Actual number might be slightly different in grade 9 for Dundana.

Floor Plan with Lockers

First Floor Plan



Basement Floor Plan

Second Floor Plan

