

HWDSB

Snow-clearing at HWDSB Schools

A responsibility shared by Board staff, contractors and the City of Hamilton



HWDSB Staff

Clear, salt and/or sand...

- walkways from the city sidewalk to the school
- school steps and portable steps
- walkways to the portables
- ramps to schools and portables
- area outside entrances and Fire Exit Doors
- Fire Exit stairs & ramps



HWDSB Contractors

After 5cm+ of snow, will...

- plow parking lots and sidewalks
- When HWDSB Facilities staff deem it necessary
- Salt and sand the parking lot before school starts
- If required, Head Caretakers may also salt or sand parts of the parking lot



City of Hamilton

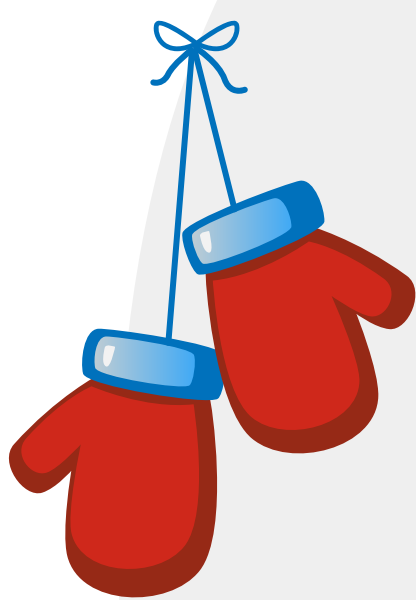
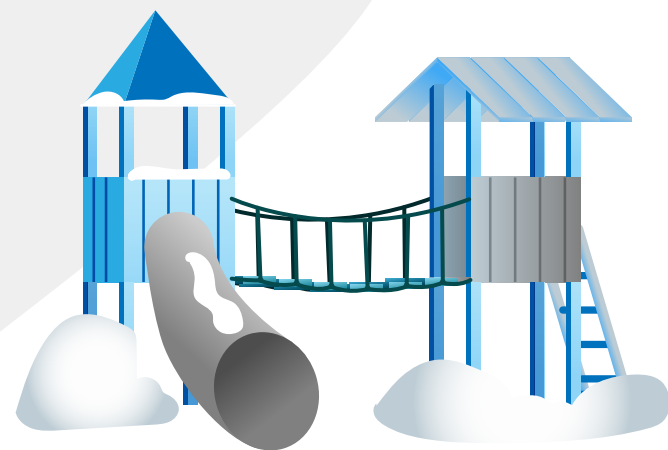
Responsible for clearing...

- Snow and ice from sidewalks directly in front of schools, a top priority for the City.
- **Note:** It may take up to 24 hours after a snowfall for sidewalks to be cleared. Report a sidewalk fronting a school in need of clearing at **905-546-CITY (2489)**

What about playgrounds?

Playgrounds **are not** plowed or cleared. Head Caretakers inspect playgrounds and sand and/or salt areas made slippery by changing temperatures.

Students, take extra caution when walking or playing on school property that may be slippery. Principals concerned about weather or playground conditions may hold indoor recesses and lunch/nutrition breaks.



Benefits of outdoor play

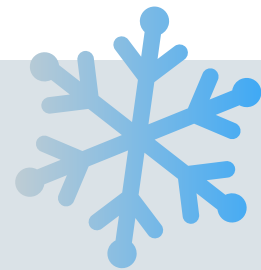
Time spent outdoors is an integral part of the school day. There are great benefits when children experience **fresh air, exercise and time spent time outside**. Outdoor play is also a break from the structure of the classroom.

Preparing for the outdoors

It's important that children come to school **prepared for the cold**. This means boots, mittens/gloves, hats and even extra mittens and socks in case they are needed.

When is it too cold for outdoor play?

Principals decide whether to send students outside for recess. HWDSB asks Principals to follow the City of Hamilton rule that we stay inside when it's at or **below -15C, or -20C with wind chill**.



below -15C,
or -20C with
wind chill

Learn more

Please direct questions or concerns about winter outdoor play to your school Principal.

Parents should check www.hamiltonschoolbus.ca for any potential transportation delays.