



# Glendale Secondary Option Selection Information Night for Grade 8 Students

curiosity

creativity

possibility



# Land Acknowledgement

The Hamilton-Wentworth District School Board acknowledges our presence on ancestral Anishinaabe and Haudenosaunee Confederacy land as determined by the Dish with One Spoon treaty.

The Dish With One Spoon Wampum Belt represents the treaty relationship between the Haudenosaunee Confederacy and Anishinaabe with respect to sharing the land and resources thereon.

The intent of this agreement is for all nations sharing this territory to do so responsibly, respectfully and sustainably in perpetuity.

We respect the longstanding relationships with the local Indigenous communities, the Mississaugas of the Credit First Nation and the Six Nations of the Grand River.





# On the Agenda...

- Meet some Glendale Staff
- Learn more about high school diploma and certificate requirements
- Hear more about the Individual Pathways Planner and its importance
- Identify how to read a course code, the differences between course types and the various pathways available
- View the new option sheet and the courses available in grade 9
- Learn about the various elective courses available to grade 9 students
- Learn how to select courses for grade 9 and input them into Xello
- Receive information about next steps and where to go for help
- Q & A period



Questions? Email [glendale@hwdsb.on.ca](mailto:glendale@hwdsb.on.ca) and in the subject line, indicate who to direct your questions

- Mr. Schroeder—Principal
- Mrs. Boulton—Vice-Principal; last names A-K
- Mrs. Collier—Vice-Principal; last names L-Z
- Ms. Hewitt—Guidance Counsellor and Head of ESL
- Mr. Ireland—Assistant Head of Student Services; last names A-K
- Ms. Miminis—Head of Student Services; last names L-Z
- Ms. Burnell—Student Success Teacher
- Ms. O'Hanlon—Learning Recovery Student Success Teacher
- Mr. Borsc—Program Coordinator for Audition-Based Program and & Head of Music
- Mr. Jeffrey—Head of Learning Resource; last names A-K
- Mrs. Cuicani—Assistant Head of Learning Resource; last names L-Z
- Mrs. Starcevic—Teacher Librarian



# Ontario Ministry of Education Diploma Requirements--OSSD

- 4 or 5 year plan
- 40 community involvement hours
- OSSLT or OSSLC
- 30 credits
  - 18 compulsory (breakdown on next slide)
  - 12 electives (your choice!)
  - 2 must be eLearning (more about this on later slide)





# 18 Compulsory Credits

### Compulsory credits

Students must earn the following 18 compulsory credits to get their Ontario Secondary School Diploma:

- 4 credits in English (1 credit per grade)
- 3 credits in mathematics (at least 1 credit in Grade 11 or 12)
- 3 credits for group 1, 2 and 3 courses (1 credit in each group—as outlined below)
- 2 credits in science
- 1 credit in Canadian history (Grade 10)
- 1 credit in Canadian geography (Grade 9)
- 1 credit in the arts
- 1 credit in health and physical education
- 1 credit in French as a second language
- 0.5 credit in career studies
- 0.5 credit in civics



### Group 1, 2 and 3 compulsory credits

Of the 18 compulsory credits, students must complete one from each of the following groups:

#### Group 1:

• English (including the Ontario Secondary School Literacy Course) or French as a second language; a Native language; First Nations, Métis, and Inuit Studies; a classical or an international language; social sciences and the humanities; Canadian and world studies; guidance and career education; or cooperative education

#### Group 2:

• health and physical education; the arts; business studies; French as a second language; or cooperative education

#### Group 3:

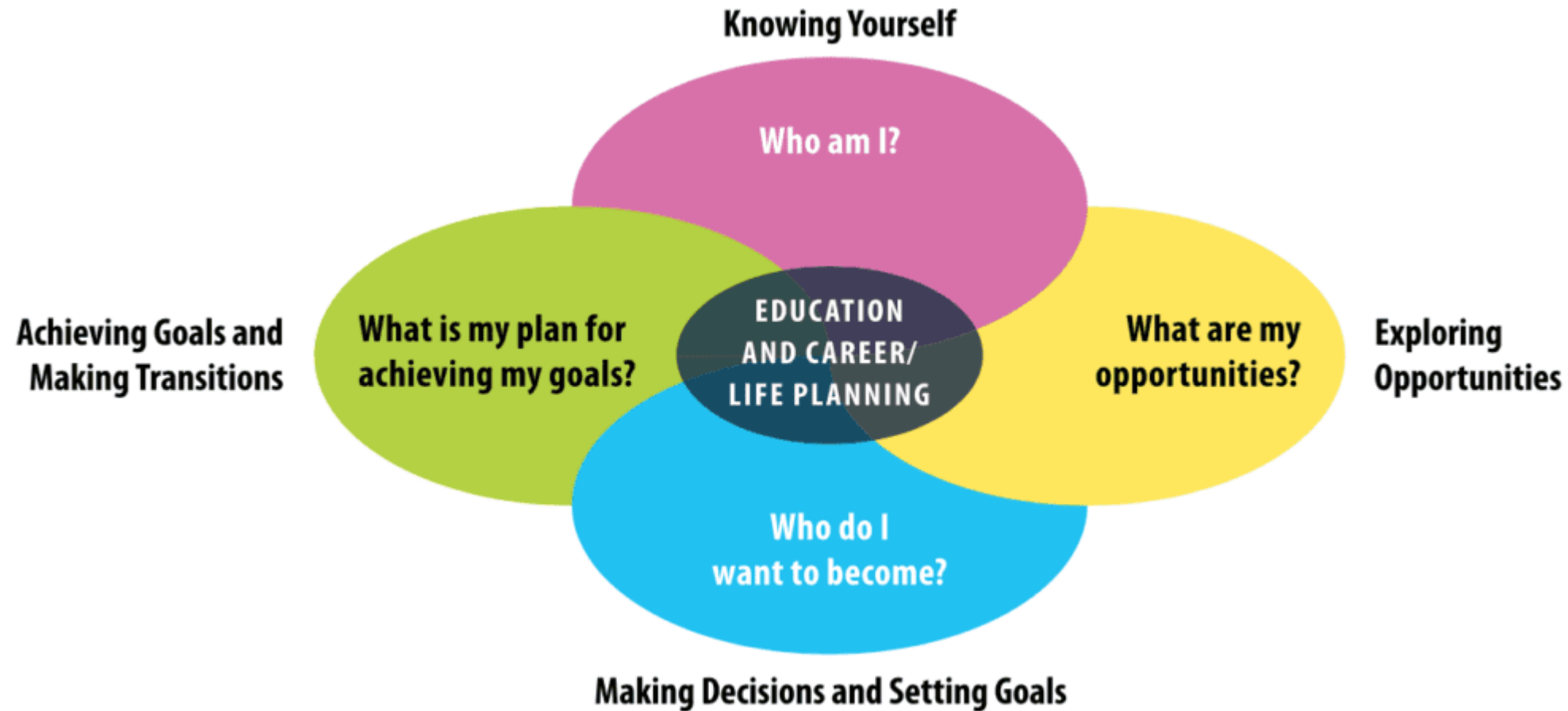
• science (Grade 11 or 12); technological education; computer studies; or cooperative education



# Ontario Ministry of Education Certificate Requirements--OSSC

The Ontario Secondary School Certificate will be granted upon request to students who leave school before earning the Ontario Secondary School Diploma, provided that they have earned a minimum of 14 credits, as follows:

- 2 English
- 1 Canadian geography or Canadian history
- 1 mathematics
- 1 science
- 1 health and physical education
- 1 arts or technological studies
- 7 optional credits selected from any available courses in the school



Excerpt from *Creating Pathways for Success, 2013*; for more information, please visit:

<http://www.edu.gov.on.ca/eng/document/policy/cps/creatingpathwayssuccess.pdf>

curiosity

creativity

possibility





# The Grade 9 Program

Usually consists of 8 courses:

- English
- Mathematics
- Geography
- French
- Science
- Physical Education (regular, fitness, basketball, soccer)
- 1 Arts Credit (drama, dance, instrumental or contemporary music, strings or visual art)
- 1 Elective (business/computers, family studies, tech/wood shop, arts (see above), computer technology/coding focus, etc.)

\*Timetables may be individualized to enhance the opportunity for students to experience success in first semester or year

\*Learning Resource periods may also be utilized to help with student success

\*For a 9<sup>th</sup> credit, students can participate in band/choir repertoire which runs outside of the regular school day





# Typical Grade 9 Schedule

Time	Semester 1	Semester 2
8:30- 9:45	<b>ENL1W1</b> (English)	<b>MTH1W1</b> (Math)
9:55-11:10	<b>CGC1D1</b> (Geography)	<b>BTT1O1</b> (Business)
11:10-12:10	<b>Lunch</b>	<b>Lunch</b>
12:10-1:25	<b>AVI1O1</b> (Visual Arts)	<b>PPL1O1</b> (Gym)
1:35-2:50	<b>SNC1W1</b> (Science)	<b>FSF1D1</b> (French)



# English Language Learner Programming

- Separate option sheet
- Five levels of ESL (English as a Second Language)
- Five levels of ELD (English Literacy Development)
- ESL programming available in Media Arts, Music Keyboarding, Business, Careers/Civics, Geography, History, Science, Math, Family Studies, Fashion/Clothing
- Ms. Hewitt and ESL department help with course selections in elementary schools with grade 8 teachers



# Reading Course Codes

Every course in an Ontario Secondary School has a six-character course code with each character identifying the course discipline, grade, course type or pathway, and a school-specific program.

Consider this example: **CGC1D1**

The first character identifies the course discipline, which in this example is Canadian and World Studies.

- A = Arts
- B = Business
- C = Canadian and World Studies
- E = English or English as a Second Language (ESL) or English Literacy Development (ELD)

- F = French
- G = Guidance and Career Education
- H = Humanities and Social Sciences
- I = Interdisciplinary Studies or Computer Studies
- L = Classical Studies and International Languages
- M = Mathematics
- N = First Nations, Métis, and Inuit Studies
- P = Physical and Health Education
- S = Science
- T = Technology



# Reading Course Codes (cont.)

The fourth character identifies the grade level, which in this example is Grade 9—CGC1D1.

- 1 = Grade 9
- 2 = Grade 10
- 3 = Grade 11
- 4 = Grade 12
- *Note: ESL/ELD courses use the letters A, B, C, D, and E to differentiate courses but are not linked to specific grade levels*





# Reading Course Codes (cont.)

The fifth character identifies the course type or pathway, which is Academic in this example--CGC1D1.

- W = Destreamed
- D = Academic
- P = Applied
- L = Locally Developed
- O = Open
- Grade 11 and 12 courses:
  - C = College
  - M = College/University
  - U = University
  - E = Workplace



# Course Types—what do they mean?

- Locally Developed or Essential = 2 to 3 years below grade level; reduced expectations; could be on an IEP with modified curriculum in grade 8; plan on going straight to the work force or community; curriculum developed by teachers
- Applied = could be below grade level reading; more hands-on learning; plan on going to college or into an apprenticeship
- Academic = at or above grade level reading; more independent, theoretical learning; plan on going to university
- Open = all levels of learning; accessible to all students and their grade level of reading
- **Destreamed = available in grade 9 programming to ensure students have the potential to access multiple pathways beyond grade 9**



# Locally Developed or Essential Courses

Offered in English, Mathematics, Science, History

- Students will learn the most essential concepts of a subject
- Students may learn by doing and/or benefit from additional reinforcements
- After Grade 9 locally developed or essential courses:
  - Grade 10 locally developed courses,
  - Grade 11 and 12 workplace courses, or
  - Grade 9 academic course



# GAP Filling Courses

- Empower Reading (ELS2O1—semester 1; ENG1L1—semester 2)
  - for students with difficulty reading; builds on phonics and word recognition
  - provided for students with recommendations from grade 8 LRT and team
- General Learning Strategies (GLS1O1)
  - helps to prepare students for grade 9 curriculum with a math focus
  - helps to fill any gaps in math along the way along with helping with the transition into high school



# Course Types and Pathways

Course Types (9-10)	Course Types (11-12)	Pathways
Destreamed (W)	College (C)	Apprenticeship
Academic (D)	College/University (M)	College
Locally Developed (L)	University (U)	Community
Open (O)	Workplace (E)	Work
	Open (O)	University

## ALL PATHWAYS ARE GREAT PATHWAYS!





# Grade 9 Courses and Option Sheets

- Available on Glendale Secondary School website here:

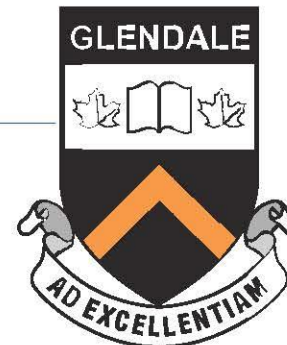
## Glendale Grade 8 Information

- ONLY for students from Associate Schools (Viola Desmond, Lake Avenue, Sir Wilfrid Laurier AND remote schools where Glendale is catchment school)
- Courses to be entered online through XELLO (more info follows)
- ABPA students (after audition process and confirmed acceptance in February) will have a separate option sheet and process—more information delivered in email to the successful applicants
- ELL students will have a separate option sheet to be selected with assistance from ESL teachers

# GLENDALE SECONDARY SCHOOL GRADE 9 OPTION SHEET 2023-2024



Student's First and Last Name: \_\_\_\_\_  
 OEN: \_\_\_\_\_ Home Phone # \_\_\_\_\_  
 Elementary School and Teacher: \_\_\_\_\_  
 IEP Exceptionality (if applicable): \_\_\_\_\_



	COMPULSORY COURSES	COURSE CODE	ELECTIVE COURSES	COURSE CODE
CHOOSE ONE	ENGLISH	ENL1W1	DRAMA	ADA2O1
	ENGLISH—ELEARNING	ENL1W1eL	DANCE	ATC2O1
CHOOSE ONE	MATH	MTH1W1	INSTRUMENTAL MUSIC	AMI1O1
	MATH—ELEARNING	MTH1W1eL	INSTRUMENTAL MUSIC—STRINGS	AMS1O1
CHOOSE ONE	SCIENCE	SNC1W1	CONTEMPORARY MUSIC	AMC1O1
	SCIENCE—ELEARNING	SNC1W1eL	VISUAL ARTS	AVI1O1
CHOOSE ONE	GEOGRAPHY	CGC1D1	VISUAL ARTS—PHOTOGRAPHY—ELEARNING	AWQ1O1eL
	GEOGRAPHY—ELEARNING	CGC1D1eL	INTRODUCTION TO BUSINESS—ELEARNING	BBI1O1eL
CHOOSE ONE	FRENCH	FSF1D1	COMPUTER APPLICATIONS—BUSINESS	BTT1O1
	FRENCH—ELEARNING	FSF1D1eL	COMPUTER APPLICATIONS—BUSINESS—ELEARNING	BTT1O1eL
	FRENCH—OPEN	FSF1O1	GENERAL LEARNING STRATEGIES—TRANSITIONS	GLS1O1
INSTRUCTIONS:  1. Complete student information section. 2. Select one course from each category of compulsory courses. 3. Select three elective courses. 4. Select band/choir if interested in a period 5, extra credit, which runs outside of the school day. 5. Add alternate electives in case your first choices are not scheduled. 6. Locally developed courses are available in consultation with the family and school team. 7. Elearning courses are available and are indicated with eL at the end of the course codes.			GENERAL LEARNING STRATEGIES—ELEARNING	GLS1O1eL
			EXPLORING FAMILY STUDIES	HIF1O1
			EXPLORING FAMILY STUDIES—ELEARNING	HIF1O1eL
			MOHAWK LANGUAGE LEVEL 1 OPEN—ELEARNING	LNMAOeL
			HEALTH AND PHYS ED—SOCCER FOCUS	PAD1O1
			HEALTH AND PHYS ED—FITNESS—ALL GENDER	PAF1O1
			HEALTH AND PHYS ED—FITNESS—FEMALE ONLY	PAF1O1F
			HEALTH AND PHYS ED—BASKETBALL FOCUS	PAL1O1
			HEALTH AND PHYS ED—MINDFULNESS—ELEARNING	PAR1O1eL
			HEALTH AND PHYS ED—ALL SPORTS—ALL GENDER	PPL1O1
			HEALTH AND PHYS ED—ALL SPORTS—FEMALE ONLY	PPL1O1F
			COMPUTER TECHNOLOGY—CODING FOCUS	TEJ1O1
			EXPLORING TECHNOLOGIES—WOODSHOP FOCUS	TIJ1O1
			EXTRA CREDIT COURSES—OUTSIDE OF SCHOOL DAY	COURSE CODE
			BAND/ORCHESTRA	AMO1O1
			CHOIR/REPERTOIRE	AMR1O1
			CONTEMPORARY STAGE BAND	AMH1O1
			ALTERNATES—ELECTIVES BEYOND THOSE ABOVE	COURSE CODE
			1.	
			2.	
			3.	



# Course Codes—Glendale Specific

- Courses ending in 'A' = ABPA (Audition Based Program of the Arts)
- Courses ending in 'L' or 'S' = ESL (English as a Second Language)
- Courses ending in 'eL' = eLearning
- For example:
  - ADA2O1 = drama
  - ADA2O1A = drama for ABPA major
  - CGC1D1 = geography
  - CGC1D1S = geography for ESL students (English as a Second Language)
  - ENL1W1 = English
  - ENL1W1eL = English eLearning



# eLearning Options @HWDSB

- Compulsory courses offered are English, math, science, geography, French
- Elective courses offered in photography, business, computer applications and family studies
- You must have a working computer/iPad and an Internet connection
- eLearning students require the following skills and work habits:
  - independent working
  - organization
  - self-direction
  - time management
  - problem-solving
  - effective communication
  - responsibility
  - honesty



# eLearning Course Graduation Requirement

**Key Details--The following is a synopsis of key components of PPM 167:**

- All students who entered secondary school beginning in September 2020 must earn a minimum of two online learning credits as part of the requirements for an Ontario Secondary School Diploma;
- Students may be exempted from this requirement at the request of their parents/guardians through an opt-out process (students 18 or older can opt themselves out);
- Students working towards other certificates (for example, the certificate of accomplishment or an Ontario Secondary School Certificate) are not required to complete the online learning requirement;
- The requirement can be met through the successful completion of 2 full online credits;
- Online learning credits towards the graduation requirement may be earned **at any time** during the student's secondary school program or through a "**reach ahead**" prior to September of their grade nine year;
- Credits earned in the following manner are ineligible: in-person learning, blended learning, flipped classrooms, and remote learning.

**OPT OUT PROCESS:** Families will have the ability to opt out of the online learning requirement by completing a form in Parent Portal. This form will be available for families to complete effective January 16th, 2023, and can be completed using either the web or mobile app version of Parent Portal.





## Elective Courses

- Dance
- Drama
- Music
  - Contemporary Music
  - Instrumental Music
  - Strings
- Visual Arts
- Computer Applications—Business
- Family Studies
- Physical Education
  - All Sports
  - Basketball
  - Soccer
  - Personal Fitness
- Computer Technologies—Coding
- Exploring Technologies—Woodshop



**Drama--ADA201**

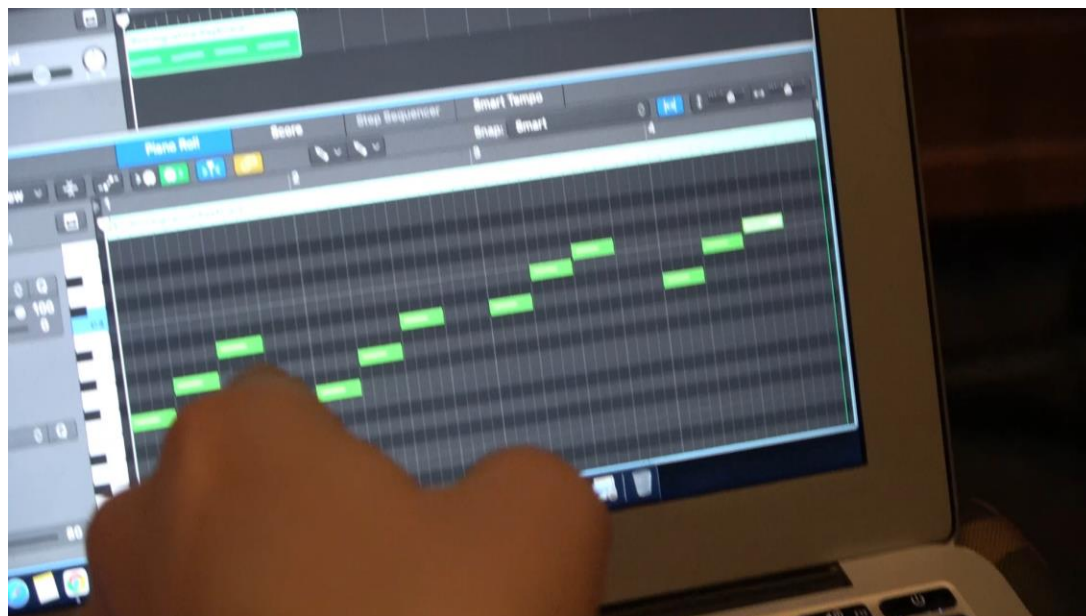


**Computer Applications (Business)--BTT101**





### Contemporary Music--AMC101



### Music AMI101 vs. Guitar AMG201







### Phys Ed—PPL101 vs. Fitness—PAF101



### Basketball--PAL101

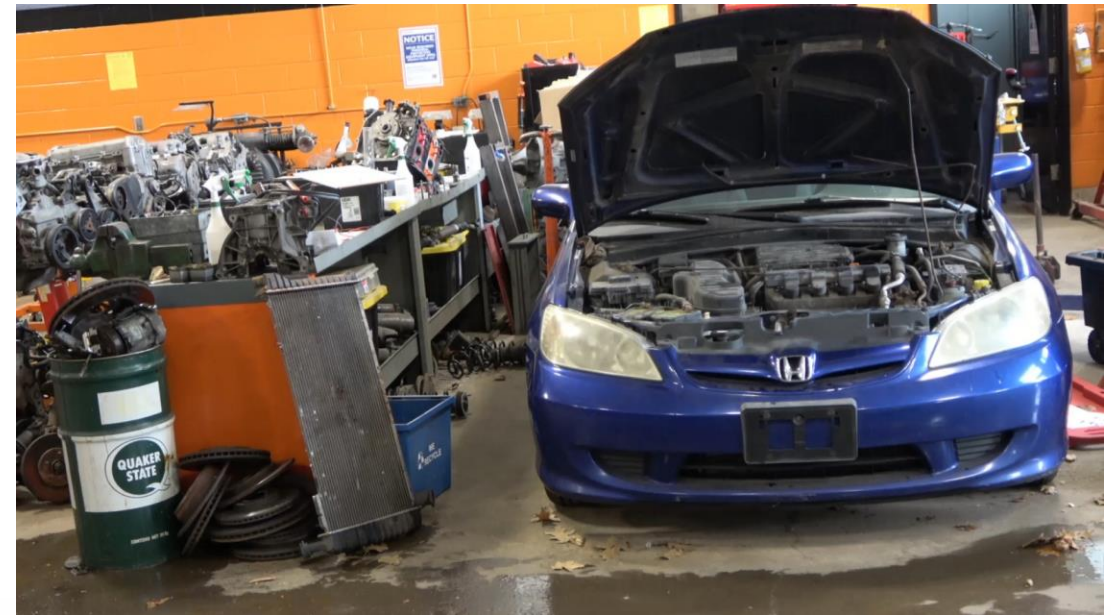




**Strings--AMS101**



**Tech—TIJ101 vs. Transportation--TTJ201**







**Visual Arts--AVI101**



**Family Studies--HIF101**





# Special Programs @ Glendale

- HWDSB Strings (open to all students)
- HWDSB Program of the Arts
  - Audition-Based Program--visual arts, media arts, music, strings, vocal, drama, production, dance, contemporary music
  - successful candidates from auditions
- Specialist High Skills Majors (next slide)
- Coop (full day or half day) & System Coop programs



# SHSM Programs @ Glendale

## Specialist High Skills Majors (SHSM)

- Start in Grade 11, finish in Grade 12 when you graduate
- Focused courses in a specific area, coop, reach-aheads, field trips, certifications and industry-recognized training
- Red Seal on OSSD

- ❖ Arts & Culture
- ❖ Business
- ❖ Non-Profit
- ❖ Transportation





# XELLO pronounced “Zello”

- Career Cruising has now moved to **XELLO**
  - Better functionality
  - New interface
  - Same capabilities
  - Course selections and pathway planning
  - Career exploration and skills developer
  - Icon found on the HUB (any grade 8 course—ask ESST or grade 8 teacher)





# Xello Instructions

- Click on "Course Planner"
- Use the Glendale Grade 9 Option Sheet as a guide to select courses
- Search in search bar for course code
- Select ADD, then click DONE in the top right-hand corner
- Continue adding courses until complete
- Add two alternates for electives in case your first choice is unavailable
- Look for the video on the Glendale Secondary School website (coming soon!)



# Hey Kiki!



There are currently no lessons assigned to this grade. [View All Lessons](#)



About Me

Matchmaker

Personality Style

Mission Complete

Learning Style

Skills Lab



Explore Options

Careers

Schools

Programs

Saved Options



Goals & Plans

My Plans

Course Planner



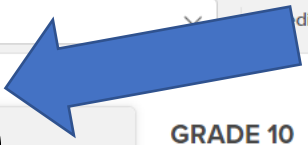


Required  
Ontario Secondary School Diploma (OSSD)

30 Credits left 0 / 30

Requirements All Requirements Earnings Planned Remaining

GRADE 9  
0 Credits  
Not Submitted



- + Add English 9 1 cr.
- + Add Math 9 1 cr.
- + Add Science 9 1 cr.
- + Add Geography 9 1 cr.
- + Add Health & Physical Education 9 1 cr.
- + Add French 9 1 cr.
- + Add Elective 9 12 Credits remaining

GRADE 10  
0 Credits

- + Add English 10 1 cr.
- + Add Math 10 1 cr.
- + Add Science 10 1 cr.
- + Add History 10 1 cr.
- + Add Career Studies 10 0.5 cr.
- + Add Civics 10 0.5 cr.
- + Add Elective 10 12 Credits remaining

GRADE 11  
0 Credits

- + Add English 11 1 cr.
- + Add Math 11 1 cr.
- + Add Elective 11 12 Credits remaining

GRADE 12  
0 Credits

- + Add English 12 1 cr.
- + Add Elective 12 12 Credits remaining

- Available period
- Available period
- Available period
- Available period
- Available period
- Available period

Year-Independent Requirements

- + Add Arts 1 cr.
- + Add Arts 1 cr.
- + Add Arts 1 cr.





# Who can help?

- Classroom Teachers and Educational Assistants
- Guidance Counsellors
- Student Success Teacher
- Learning Resource Teachers
- Teacher Librarian
- Social Worker
- Mental Health Nurse and Public Health Nurse
- Settlement Workers In Schools (for ELL students)
- Vice-Principals and Principals





# Who can help?




## Student Success Teacher—Ms. Burnell

- Grade 9 Orientation—you are automatically registered!
- Usually the week before school begins in late August/early September
  - Learn tips and tricks for success in high school
  - Improve study habits and learning skills
  - Learn how to use the HUB, Notability, MS Teams, OneNote and other apps
  - Meet the who's who of Glendale and learn where to get help
  - Receive a map of the school and learn where to go for your classes and additional support



## For more information...

- **Glendale School Website:** <http://www.hwdsb.on.ca/glendale/>
  - Look under **Services for Students** tab
  - **Grade 8 Information**
- **Twitter:** @Glendale\_HWDSB 
- **The HUB: XELLO** access for all students
  - **ANY Grade 8** course—all students have access to this—if you don't, ask your grade 8 teacher or Elementary Student Success Teacher





## Next Steps...

- Log into Xello through the HUB
- Use the Glendale Grade 9 Option Sheet to support your choices
- Start selecting courses in Xello
- **By clicking SUBMIT you are ensuring that your parents/guardians are aware of your selections—THEY WILL ALSO VERIFY THROUGH PARENT PORTAL IN THE SPRING**
- Paper copy of option sheet will be completed in school as a backup
- If you need help, connect with your elementary school teacher and Student Success teacher
- Any RED FLAGS will need a guidance counsellor to override—you will not be able to submit in this case



DUE DATE is Friday, February 24th





# Thank You!

curiosity

creativity

possibility