



Areas in Blue

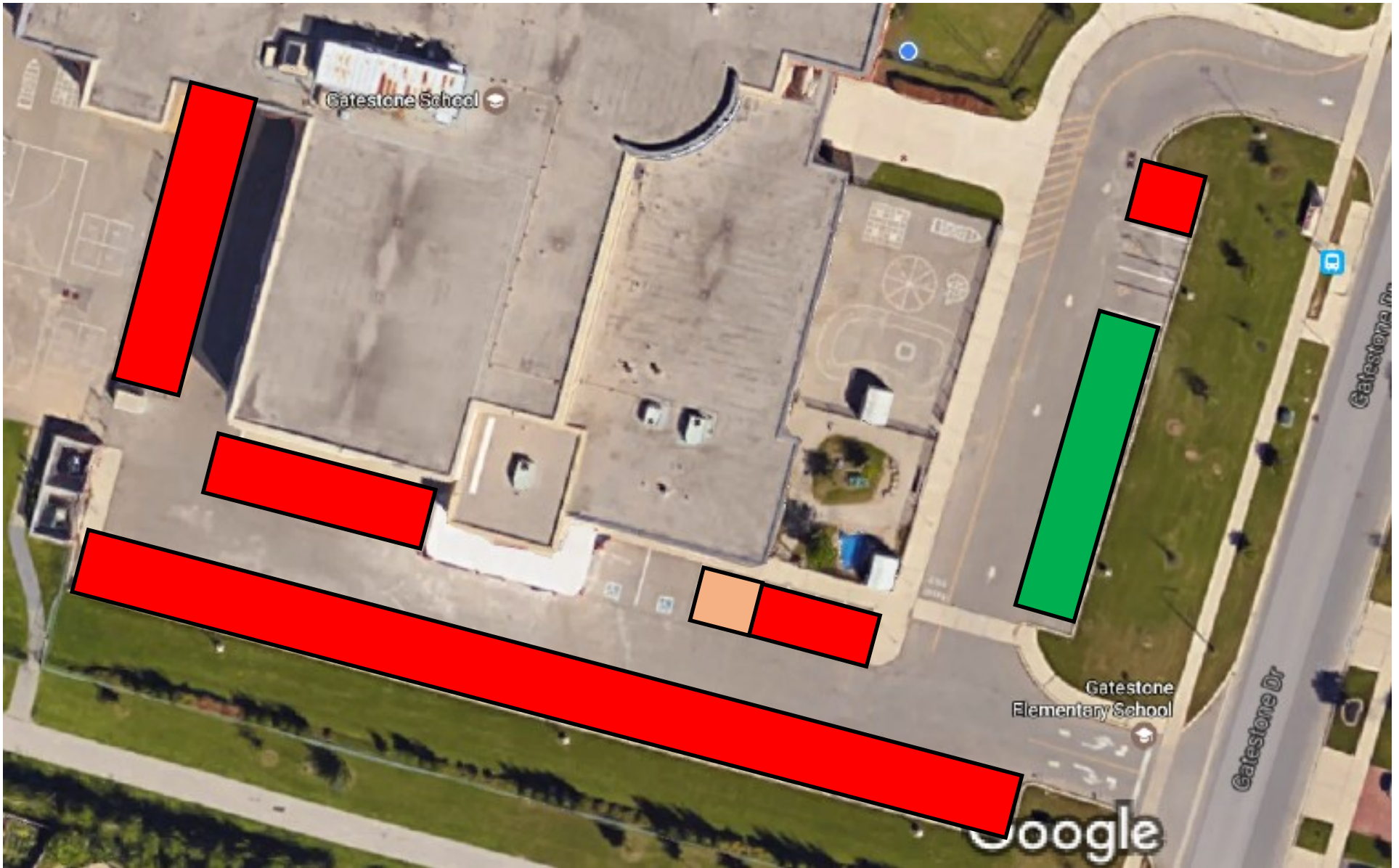
NO PARKING Signs

This means you can not put your car into park and get out. By-Law will give a very short grace period, for a drop off in this zone. However, even if you are just dropping off you can not get out of your car or you will be ticketed.

Area in Yellow

NO Stopping Signs

This means you can not stop at all in this area. No drop offs, no parking, no stopping at all. You will be ticketed if you do.



The red areas are staff only parking. If you do not have a staff decal in your windshield, you will be ticketed. We will ask By-Law to enforce from 8:15 am to 3:30 pm M-F, however they can come at any time.

The two orange area spots are 5 min drop off parking only. Beyond that you will be ticketed if By-Law is here.

The green areas are visitor. You may park here anytime.