

Elementary Pupil Accommodation Review Committee

Dalewood
Accommodation Review Committee
Public Meeting #2

Dalewood Public School
May 19, 2011

Why we are here tonight?

- Provide an overview of the Accommodation Review Process
- Review the next steps of the Accommodation Review Committee (ARC)
- Presentation of accommodation option prepared by Board Administration
- Address any questions/ comments pertaining to the ARC process or option prepared by Board Administration



Overview of the Accommodation Review Process

The Accommodation Review Process

- The process follows Ministry of Education guidelines, Board Policy and the Terms of Reference
- There are committee working meetings and public meetings.
 - All meetings are open to the public
- The Accommodation Review Committee (ARC) is tasked with developing an accommodation solution that will address the long-term requirements of the community

ARC Recommendations

- The ARC will prepare a report that will be presented to the Board of Trustees
 - This report will include the ARC's recommendations
- The Trustees will also receive a report from Senior Administration with their recommendations to the Board of Trustees
- The Board of Trustees will make the final decisions

- 4 Public Meetings
- Originally 4 Working Group Meetings
- ARC has added 3 more Working Group Meetings
 - June 22, 2011
 - September 7, 2011
 - Oct 5, 2011
- After receipt of final report, Trustees have to wait a minimum of 60 prior to voting on a final decision



Information for the ARC

- The ARC will review the School Information Profiles (SIP)
- **These profiles consider the value of schools to the student, the community, the Board and the local economy**
- The ARC received the recommendations of senior administration for their consideration.
 - The recommendations provide a foundation for the ARC to build on
- Requests for additional information have already been submitted to the ARC
 - Agendas and minutes from previous meetings will be circulated to ARC members at least 24 hours prior to the ARC meeting

What will the ARC consider when developing their options?

Reference Criteria (as outlined in the Board policy):

- a) Facility Utilization
- b) Permanent and Non-Permanent Accommodation
- c) Program Offerings
- d) Quality of Teaching and Learning Environments
- e) Transportation
- f) Partnerships
- g) Equity

Next Steps

- Working Group Meeting #2
 - June 8, 2011 @ Education Centre
- Detailed review the data contained within the School Information Profiles
- Review of additional data requested by the ARC
- All information will be available on the Board's website

<http://www.hwdsb.on.ca/arcelementary/>

Accommodation Option

Prepared by Board Administration

Why an Accommodation Review?

- Program Benefits
- Financial Benefits

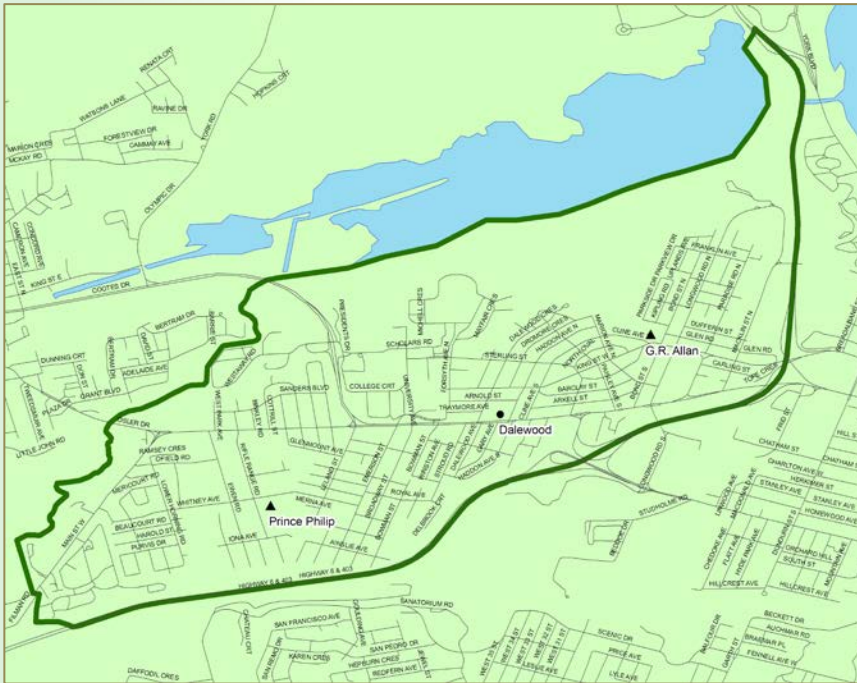
Current Situation:

School	Year of Construction	2009 OTG Capacity	2009 Enrolment (Utilization)	2015 Enrolment (Utilization)	2020 Enrolment (Utilization)	Current FCI	10 Yr FCI
Dalewood (Grades: 6-8 Eng, 6-8 FI)	1948	392	380 (97%)	312 (80%)	297 (76%)	46%	63%
G.R. Allan (Grades: JK-5 Eng, SK-5 FI)	1927	498	471 (94%)	356 (71%)	345 (69%)	46%	66%
Prince Philip (Grade JK-5 Eng)	1953	233	188 (81%)	219 (94%)	208 (89%)	55%	67%
TOTAL		1,123	1,038 (92%)	887 (79%)	850 (76%)		

Enrolment is projected to decline by approximately 188 students over the course of the next 10 years

- Currently there are approximately 85 surplus pupil spaces between the 3 schools
- Surplus pupil spaces projected to increase to approximately 273 by 2020
- FCI will increase at all facilities over the next 10 years

Dalewood ARC – Population and Dwelling Counts



General Observations

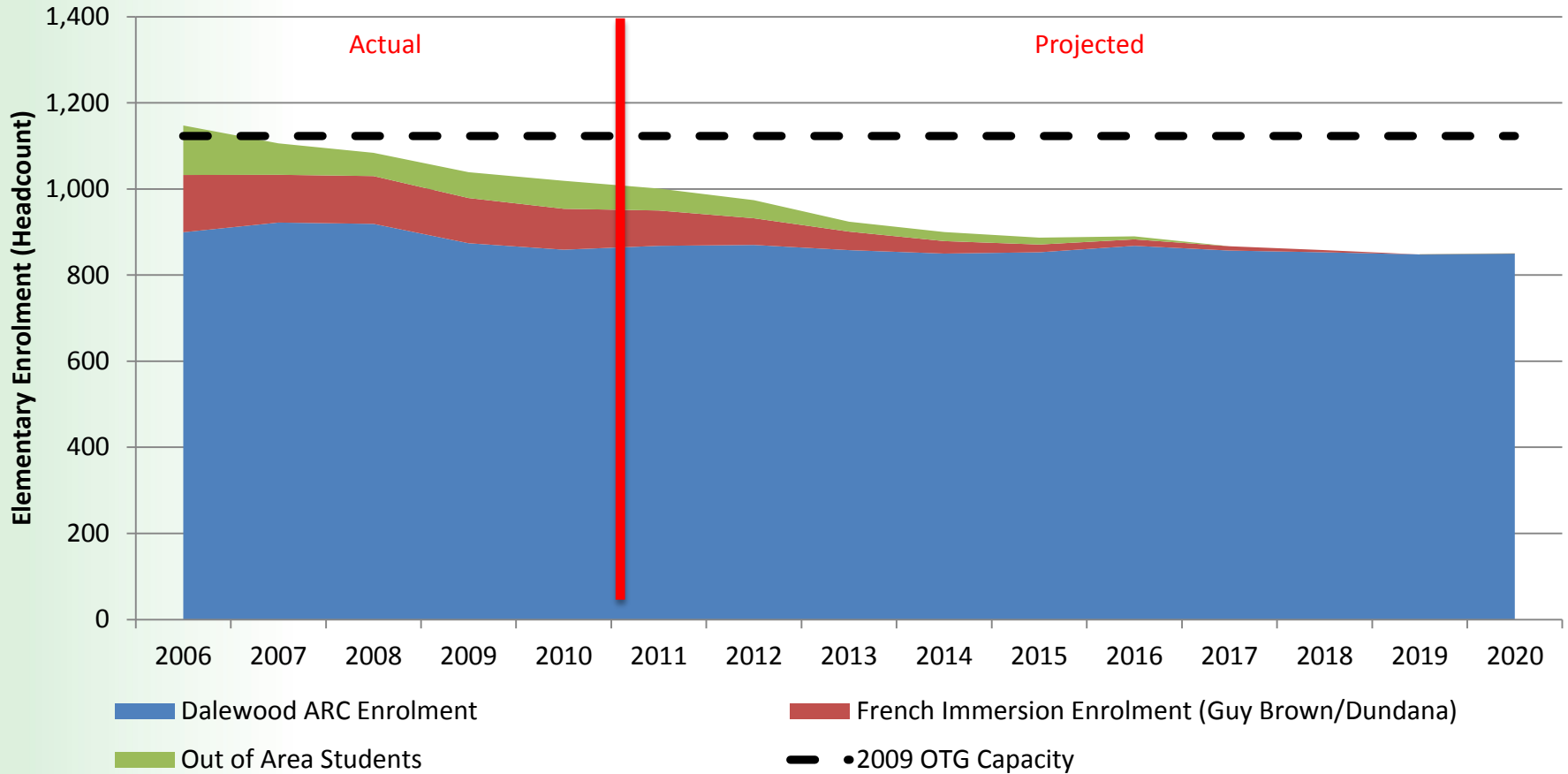
- Between 1996 and 2006 the total elementary student yield per household decreased by 23%
- During this same time period the actual number of elementary school age children residing in this area declined by 145
- Consistent with historical and projected enrolment trends for students residing within this area

Student Yields

Age	1996	2001	2006
0 – 3 Pre-School Aged	0.0829	0.0713	0.0711
4 – 13 Elementary School-Aged	0.1901	0.1665	0.1457

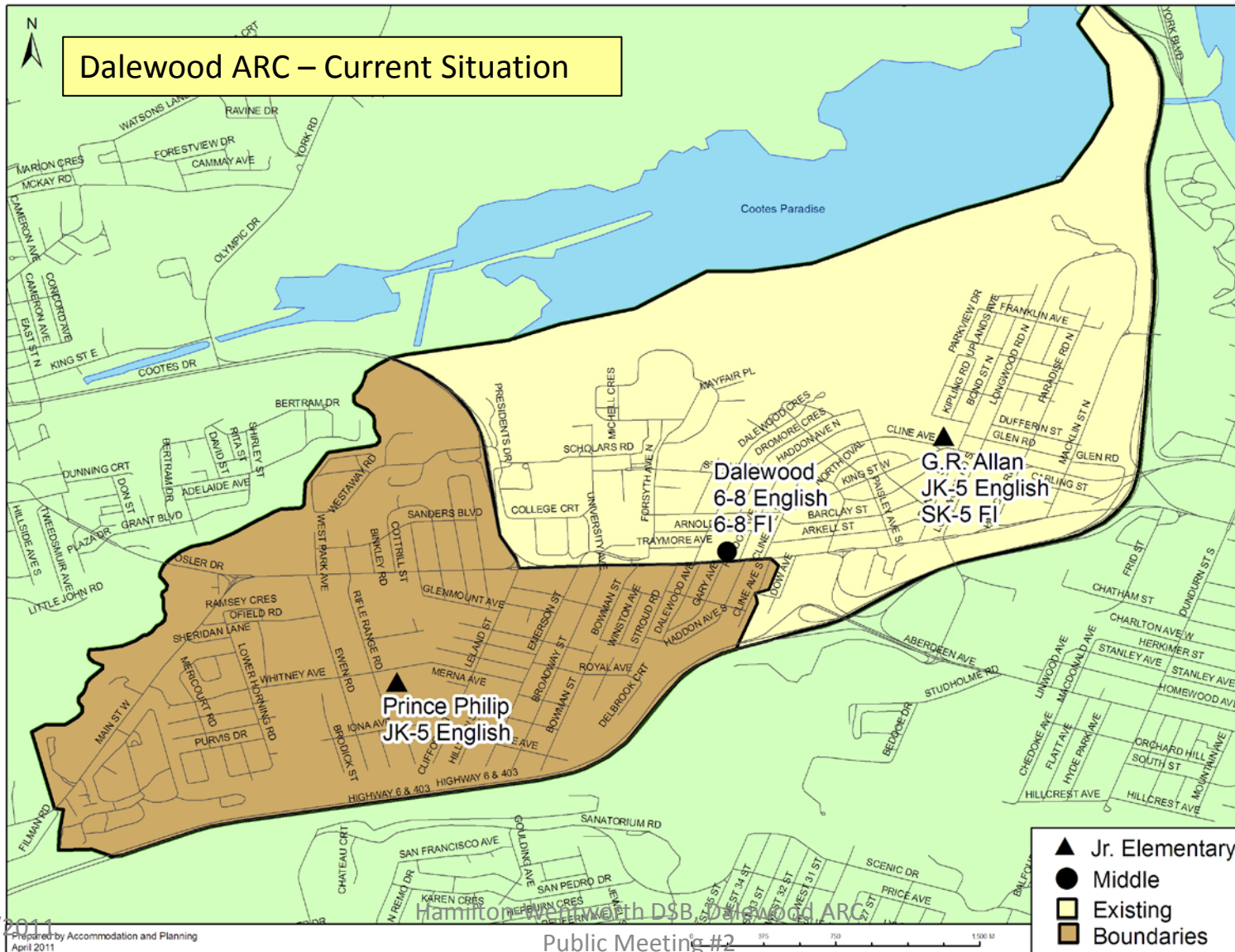
Age	1996 Census Population	2001 Census Population	2006 Census Population	Change 1996 - 2001	% Change 1996 - 2001	Change 2001 - 2006	% Change 2001 - 2006
0 – 3 Pre-School Aged	595	580	595	(15)	-3%	15	3%
4 – 13 Elementary School-Aged	1,365	1,355	1,220	(10)	-1%	(135)	-10%

Historical and Projected Enrolment (Dalewood ARC)

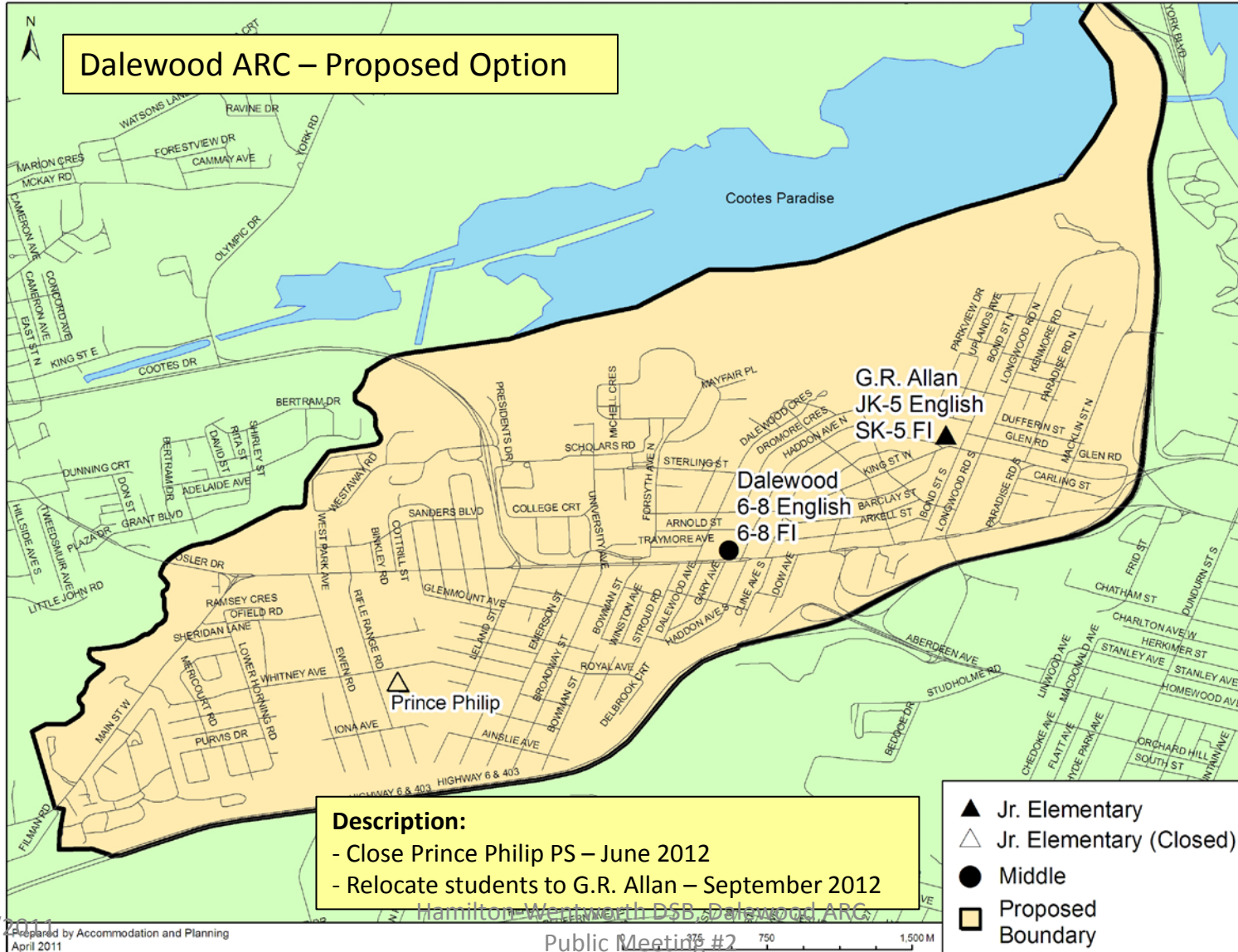




Dalewood ARC – Current Situation



Dalewood ARC – Proposed Option



Proposed Option:

Current Situation					Proposed Option			
School	2009 OTG Capacity	2009 Enrolment (Utilization)	2015 Enrolment (Utilization)	2020 Enrolment (Utilization)	2012 OTG Capacity	2012 Enrolment (Utilization)	2015 Enrolment (Utilization)	2020 Enrolment (Utilization)
Dalewood	392	380 (97%)	312 (80%)	297 (76%)	392	359 (92%)	312 (80%)	297 (76%)
G.R. Allan	498	471 (94%)	356 (71%)	345 (69%)	599	615 (103%)	575 (96%)	553 (92%)
Prince Philip	233	188 (81%)	219 (94%)	208 (89%)	--	--	--	--
TOTAL	1,123	1,038 (92%)	887 (79%)	850 (76%)	991	974 (98%)	887 (90%)	850 (86%)

Proposed Option (Program Structure):

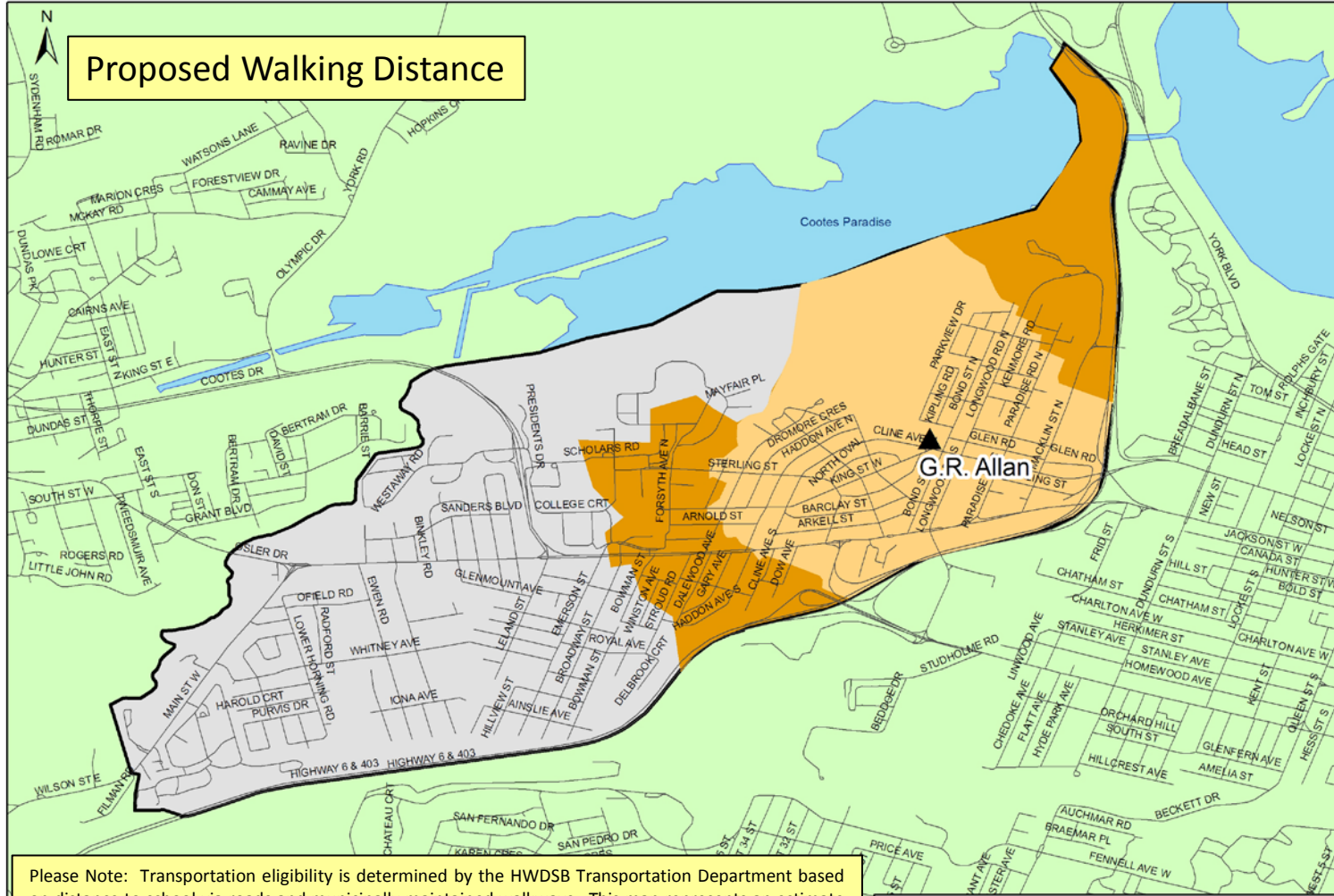
Current Situation					Proposed Option		
School	Programs	2009 Enrolment (Utilization)	2015 Enrolment (Utilization)	2020 Enrolment (Utilization)	2012 Enrolment (Utilization)	2015 Enrolment (Utilization)	2020 Enrolment (Utilization)
Dalewood	Eng	75%	68%	69%	68%	68%	69%
	FI	25%	32%	31%	32%	32%	31%
G.R. Allan	Eng	48%	36%	35%	55%	53%	51%
	FI	52%	64%	65%	38%	39%	41%
	Mand				7%	8%	8%
Prince Philip	Eng	95%	79%	78%	-	-	-
	Mand	5%	21%	22%			

Proposed Option Includes:

Dalewood	G.R. Allan
Renovations to classrooms	8 Classroom Addition* 4 New ELP Classrooms* (Remove all classes from basement)
Book Room	Book Room
Elevator	Elevator
Accessible Washroom	Accessible Washroom
Larger Staff and Work Room	Larger Staff and Work Room
Gymnasium (Upgrades or New pending discussions with City of Hamilton)	2 nd General Purpose Room (Gymnasium)
	2 nd Floor Washrooms
	Additional Resource Room and Special Education Room



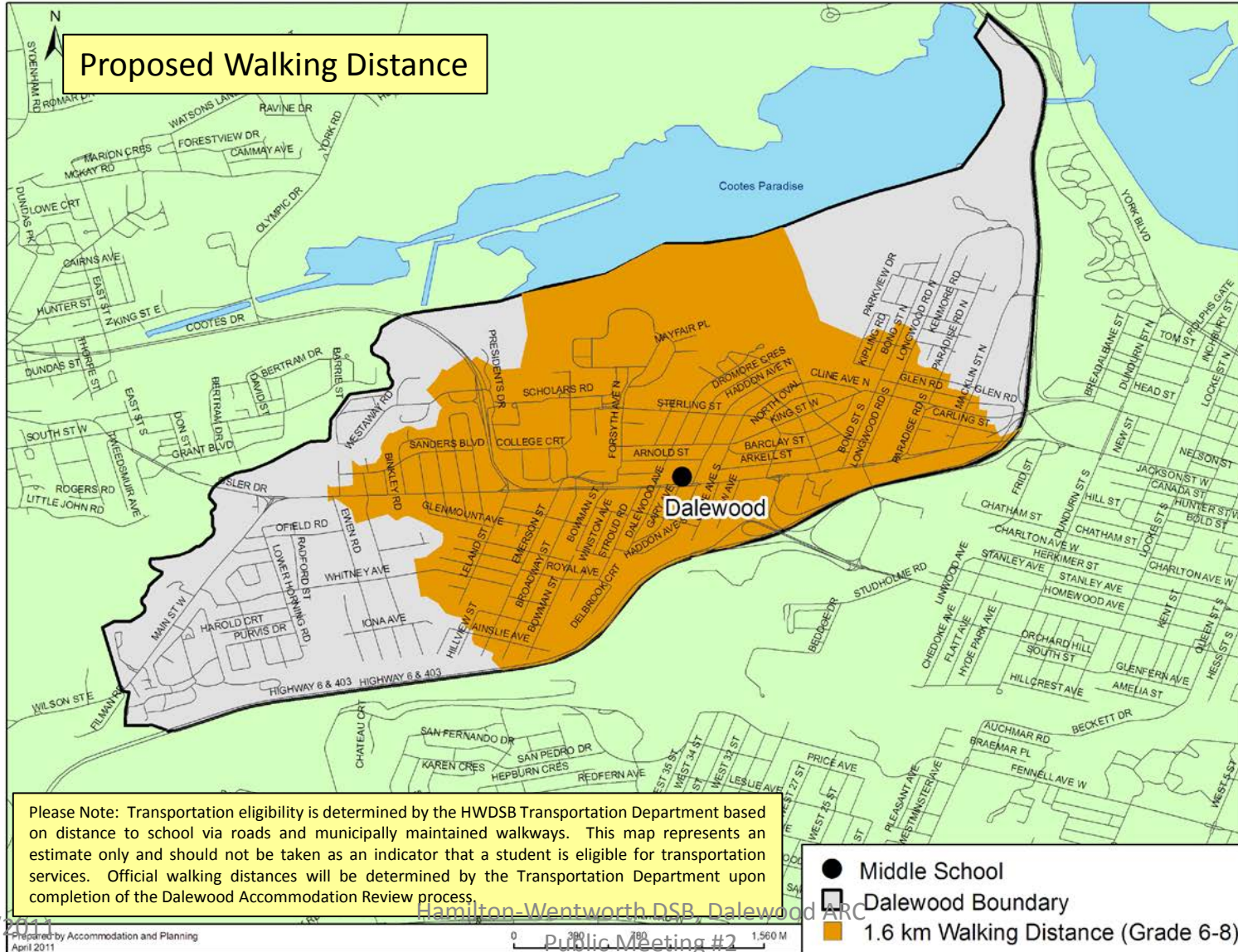
Proposed Walking Distance



Please Note: Transportation eligibility is determined by the HWDSB Transportation Department based on distance to school via roads and municipally maintained walkways. This map represents an estimate only and should not be taken as an indicator that a student is eligible for transportation services. Official walking distances will be determined by the Transportation Department upon completion of the Dalewood Accommodation Review process.

- ▲ Jr. Elementary
- ▭ G.R. Allan Boundary
- 1.0 km Walking Distance (JK/SK)
- 1.6 km Walking Distance (Grade 1-5)

Proposed Walking Distance



Please Note: Transportation eligibility is determined by the HWDSB Transportation Department based on distance to school via roads and municipally maintained walkways. This map represents an estimate only and should not be taken as an indicator that a student is eligible for transportation services. Official walking distances will be determined by the Transportation Department upon completion of the Dalewood Accommodation Review process.

Additional Considerations:

- Grade structure
- Balancing of enrolments between the sites
- Enrolment split by program
- The viability of each facility
- The size of each facility
- Geographic features or natural barriers

Summary of Options

- Close Prince Philip PS in June 2012
- Relocate students to existing facilities in September 2012
 - JK – 5 English, SK – 5 FI and Mandarin SK-3 to G.R. Allan
 - Grade 6 – 8 (English and FI) to remain at Dalewood
- Provides opportunities for enhanced programming
- Creates a more balanced English/French enrolment at the junior school level
- Results in a positive impact on the long-term maintenance, operational and renewal costs of the Board

- Funding Strategy
 - Operational/ Renewal Savings
 - Proceeds of Disposition from the sale of the Prince Philip school site
 - Funding provided by the Ministry of Education through capital grants and Full Day Learning capital grants

Why we are here tonight?

- ✓ Provide an overview of the Accommodation Review Process
- ✓ Review the next steps of the Accommodation Review Committee (ARC)
- ✓ Presentation of accommodation option prepared by Board Administration
- Address any questions/ comments pertaining to the ARC process or option prepared by Board Administration



Questions