

# Dalewood Accommodation Review Committee

## Working Group Meeting # 5

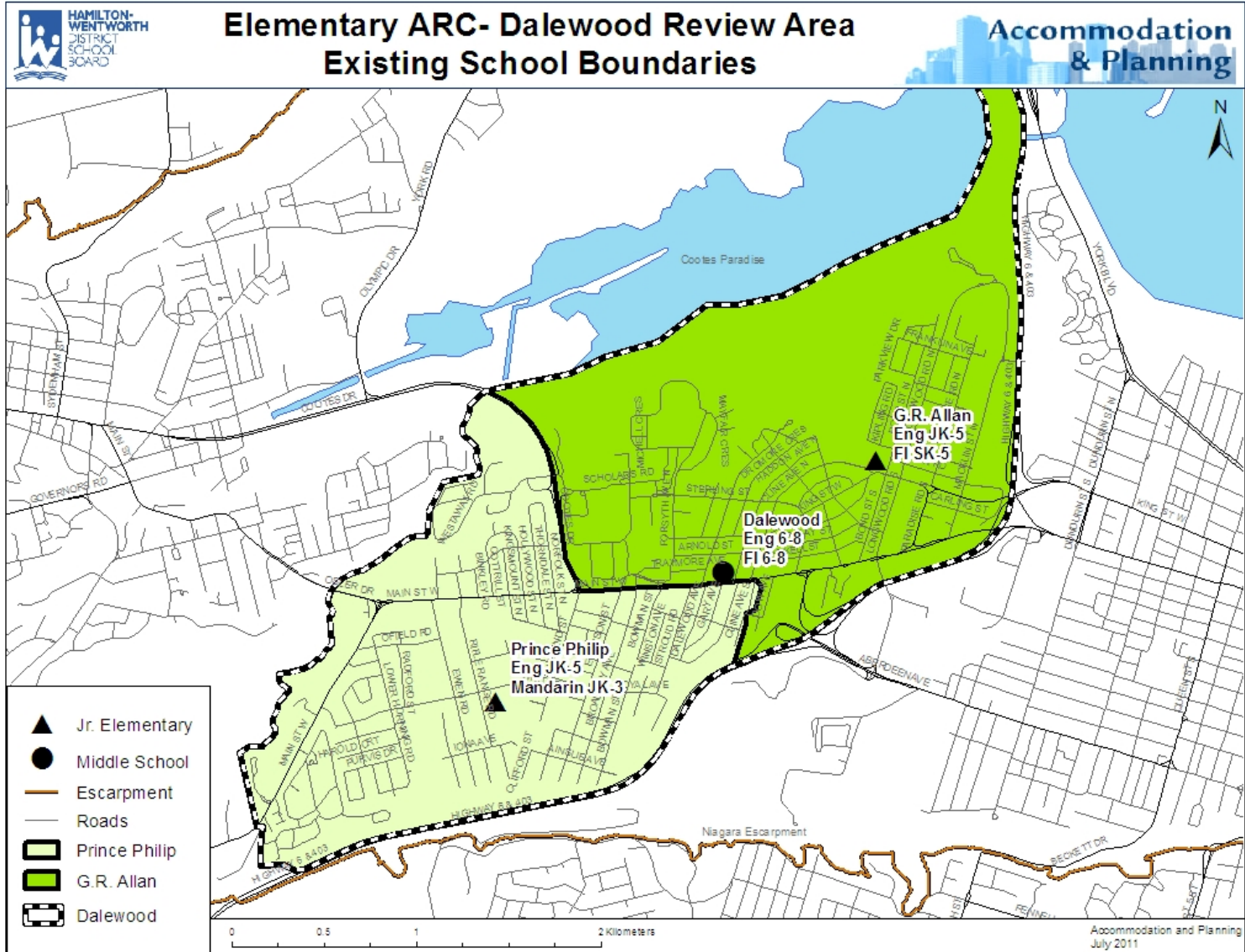
### *Additional Option Summaries*

Dalewood – G.R.Allan – Prince Philip

September 14, 2011

## Summary of Dalewood ARC Boundary Options Sept 14, 2011

	Dalewood	G.R. Allan	Prince Philip
<b>Status Quo</b>	Eng 6-8	Eng JK-5	Eng JK-5
	FI 6-8	FI SK-5	Mandarin JK-3
<b>HWDSB Staff Recommendation</b>	Eng 6-8	Eng JK-5	Closed
	FI 6-8	FI SK-5	
		Mandarin JK-3	
<b>ARC Concept Option 2</b>	Eng JK-8	Closed	Eng JK-8
	FI SK-8		FI SK-8
			Mandarin JK-3
<b>ARC Concept Option 3</b>	Closed	Eng JK-8	Eng JK-8
		FI SK-8	FI SK-8
		Mandarin JK-3	
<b>ARC Concept Option 4</b>	FI SK-8	Eng JK-8	Closed
		Mandarin JK-3	
<b>ARC Concept Option 9</b>	Eng JK-8	Closed	Closed
	FI SK-8		
	Mandarin JK-3		
<b>ARC Concept Option 10 (shelved)</b>			
<b>ARC Concept Option 11 (Status Quo)</b>			
<b>ARC Concept Option 12</b>	Eng JK-8	Closed	Eng JK-5
	FI SK-8		Mandarin JK-3



October\_2010

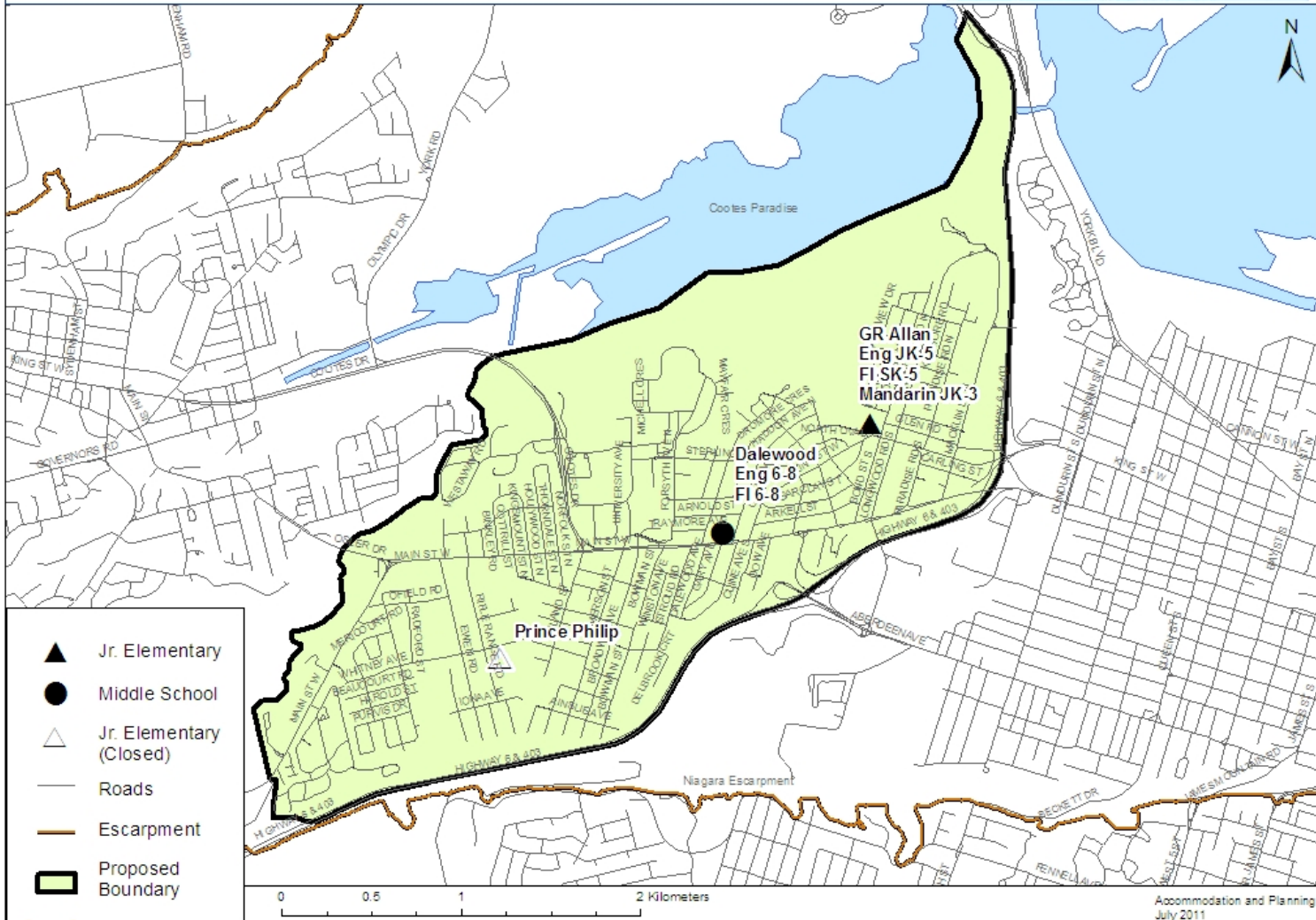
		Capacity	2010	2012	2015	2020
<b>Dalewood</b>		<b>392</b>				
	<b>Enrolment</b>	<b>Eng 6 - 8</b>	268	244	201	183
		<b>FI 6-8</b>	109	115	100	93
		<b>Total</b>		377	359	301
	<b>Utilization</b>		<b>96%</b>	<b>92%</b>	<b>77%</b>	<b>70%</b>
<b>G.R. Allan</b>		<b>498</b>				
	<b>Enrolment</b>	<b>Eng JK - 5</b>	220	178	129	120
		<b>FI SK-5</b>	239	236	227	225
		<b>Total</b>		459	414	356
	<b>Utilization</b>		<b>92%</b>	<b>83%</b>	<b>71%</b>	<b>69%</b>
<b>Prince Philip</b>		<b>233</b>				
	<b>Enrolment</b>	<b>Eng JK - 5</b>	154	150	159	149
		<b>Mandarin JK-3</b>	29	44	45	45
		<b>Total</b>		183	194	204
	<b>Utilization</b>		<b>79%</b>	<b>83%</b>	<b>88%</b>	<b>83%</b>
<b>Total Utilization</b>			<b>91%</b>	<b>86%</b>	<b>77%</b>	<b>73%</b>

\*figures represent a 25% Mandarin student retention rate



**Elementary ARC- Dalewood Review Area - Staff Recommendation**  
**Closure of Prince Philip**  
 Dalewood Eng 6-8, FI 6-8, G.R. Allan Eng JK-5, FI SK-5, Mandarin JK-3

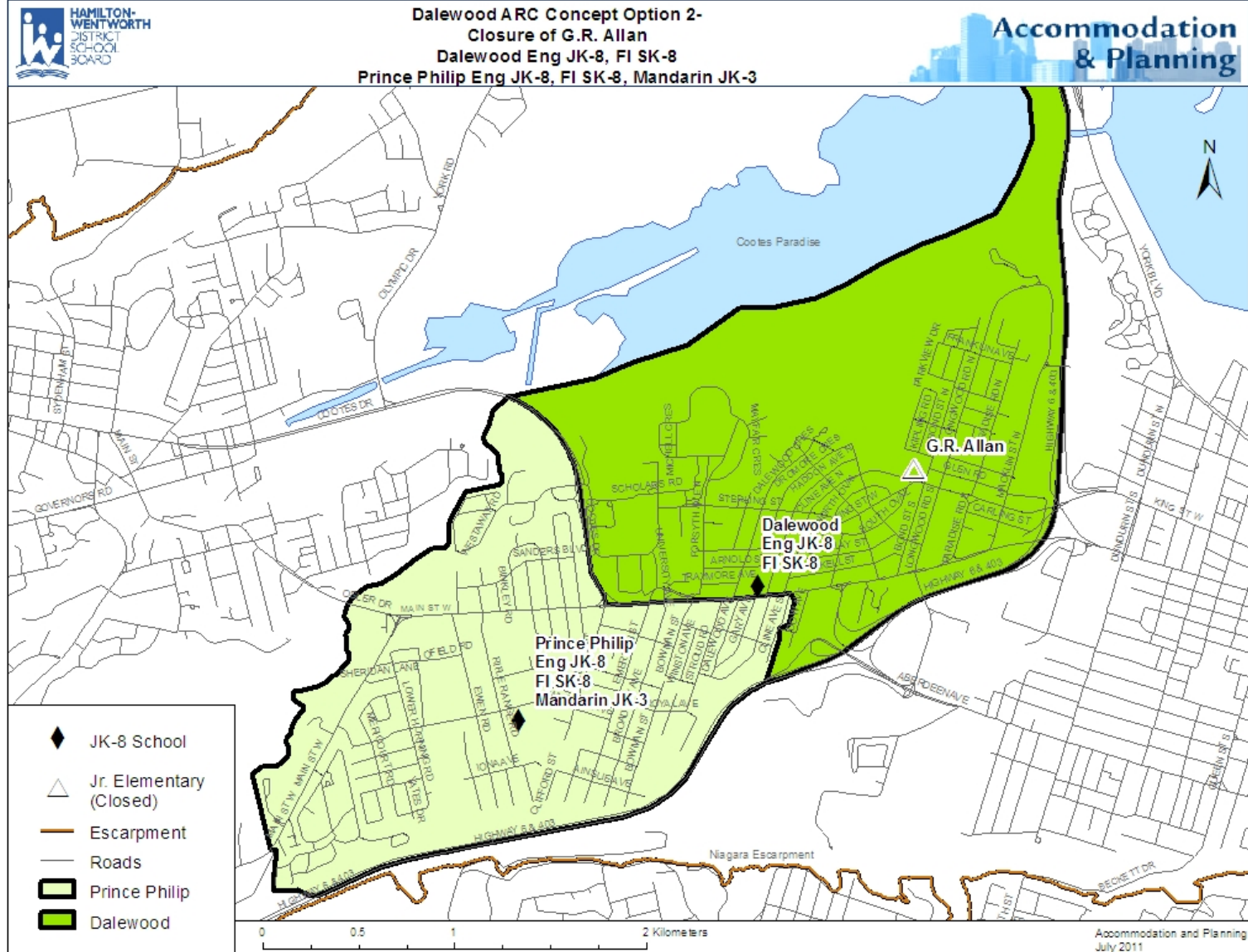
**Accommodation  
& Planning**



## Staff Recommendation

	Capacity	2010	2012	2015	2020
<b>Dalewood</b>	<b>392</b>				
Enrolment					
Eng 6 - 8		268	244	201	183
FI 6-8		109	115	100	93
<b>Total</b>		<b>377</b>	<b>359</b>	<b>301</b>	<b>276</b>
Utilization		<b>96%</b>	<b>92%</b>	<b>77%</b>	<b>70%</b>
<b>G.R. Allan</b>	<b>498</b>				
Enrolment					
Eng JK - 5		220	328	288	269
FI SK-5		239	236	227	225
Mandarin JK-3			44	45	45
<b>Total</b>		<b>459</b>	<b>608</b>	<b>560</b>	<b>539</b>
Utilization		<b>92%</b>	<b>122%</b>	<b>112%</b>	<b>108%</b>
<b>Prince Philip</b>	<b>233</b>				
Enrolment					
Eng JK - 5		154			
Mandarin JK-3		29			
<b>Total</b>		<b>183</b>			
Utilization		<b>79%</b>	<b>0%</b>	<b>0%</b>	<b>0%</b>
<b>Total Utilization</b>		<b>91%</b>	<b>109%</b>	<b>97%</b>	<b>92%</b>

\*figures represent a 25% Mandarin student retention rate



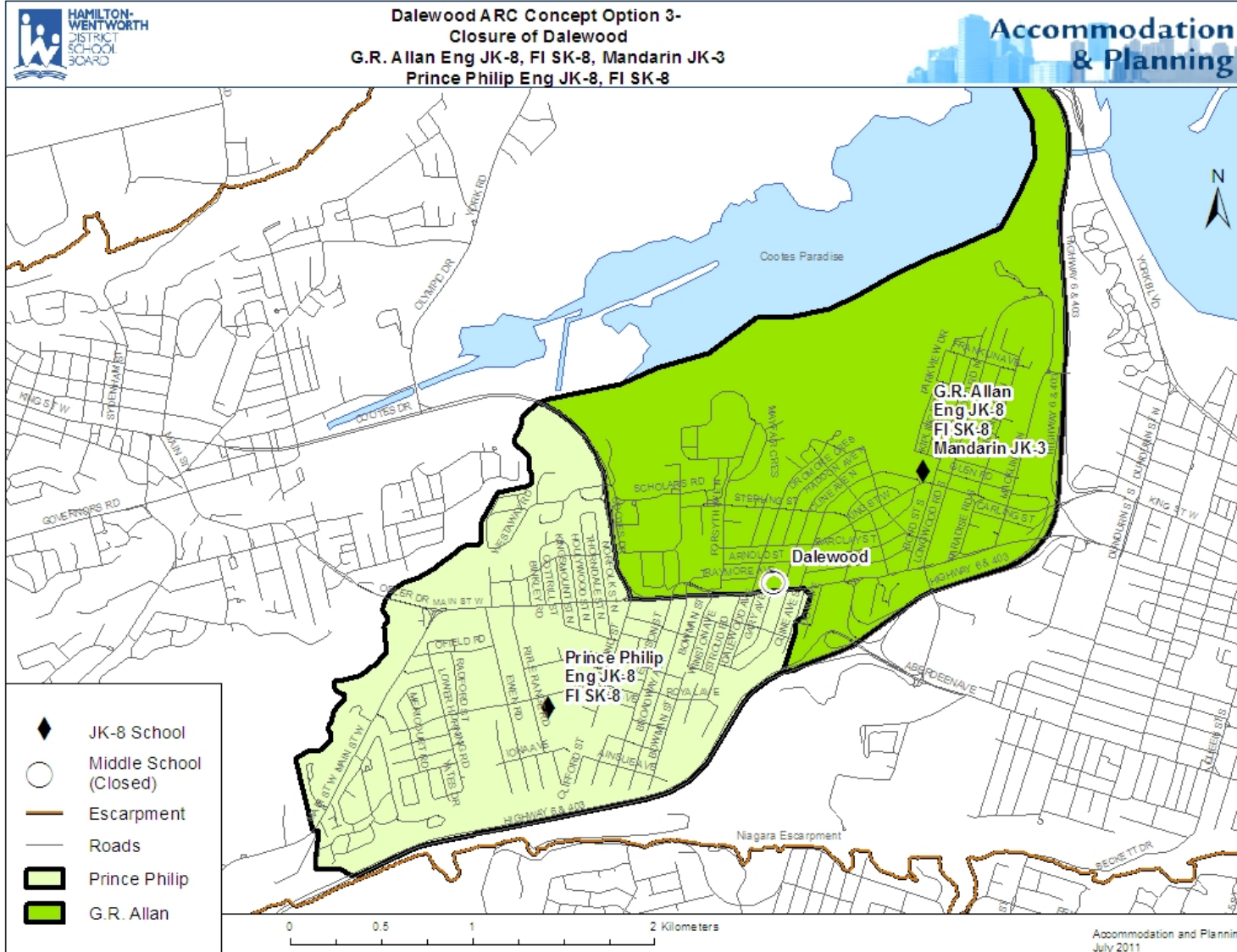


## Arc Concept Option 2

			Capacity	2010	2012	2015	2020	
<b>Dalewood</b>	<b>Enrolment</b>	<b>Eng 6 - 8</b>	<b>392</b>	268				
		<b>Eng JK- 8</b>			338	266	247	
		<b>FI 6-8</b>		109				
		<b>FI SK-8</b>			302	268	255	
		<b>Total</b>			<b>377</b>	<b>640</b>	<b>534</b>	<b>502</b>
	<b>Utilization</b>			<b>96%</b>	<b>163%</b>	<b>136%</b>	<b>128%</b>	
<b>G.R. Allan</b>		<b>Eng JK - 5</b>	<b>498</b>	220				
		<b>FI SK-5</b>		239				
		<b>Total</b>		<b>459</b>				
		<b>Utilization</b>			<b>92%</b>	<b>0%</b>	<b>0%</b>	<b>0%</b>
<b>Prince Philip</b>	<b>Enrolment</b>	<b>Eng JK - 5</b>	<b>233</b>	154				
		<b>Eng JK - 8</b>			234	223	205	
		<b>FI SK-8</b>			49	59	63	
		<b>Mandarin JK-3</b>		29	44	45	45	
		<b>Total</b>			<b>183</b>	<b>327</b>	<b>327</b>	<b>313</b>
		<b>Utilization</b>			<b>79%</b>	<b>140%</b>	<b>140%</b>	<b>134%</b>
<b>Total Utilization</b>				<b>91%</b>	<b>155%</b>	<b>138%</b>	<b>130%</b>	

\*figures represent a 25% Mandarin student retention rate

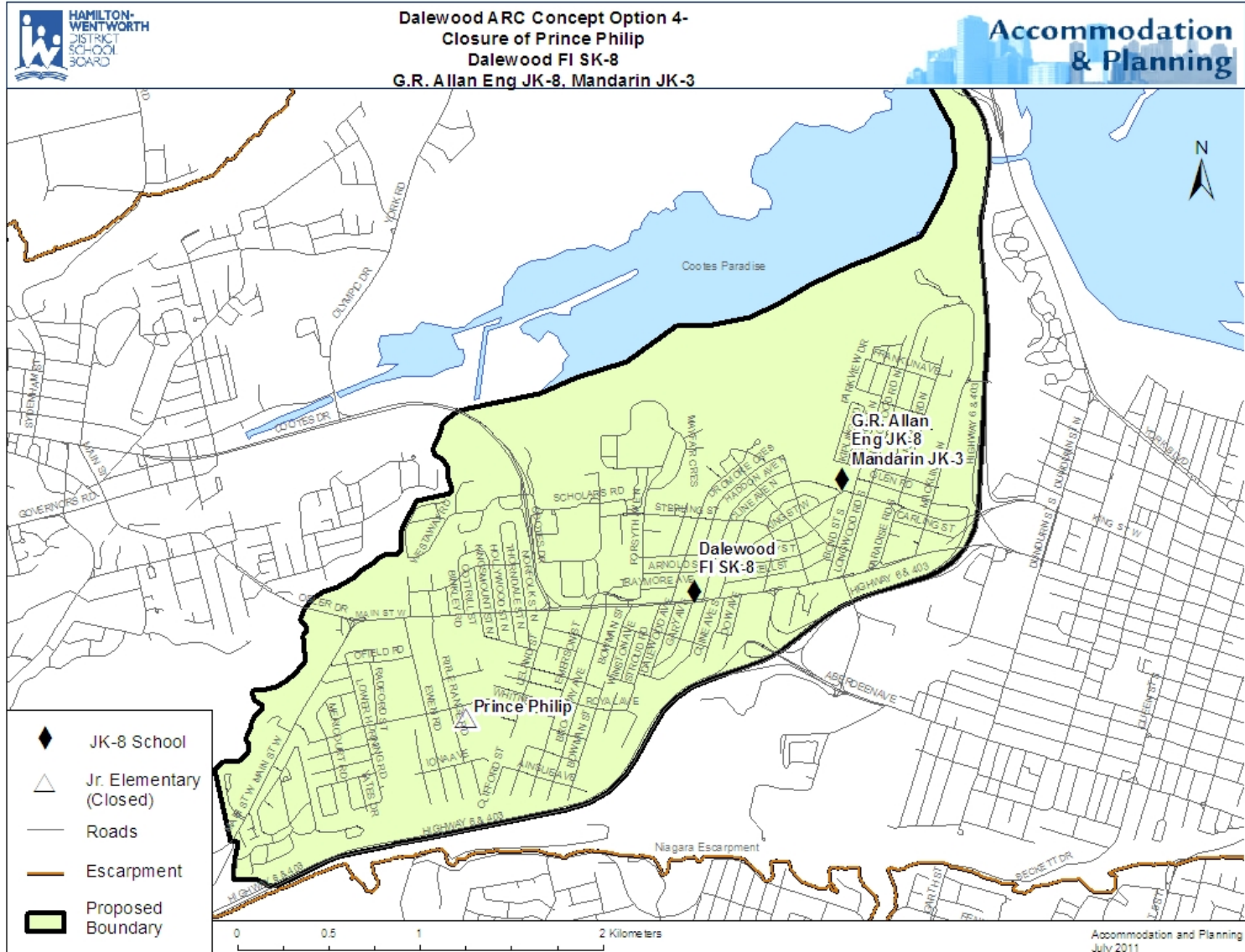




## Arc Concept Option 3

			Capacity	2010	2012	2015	2020
<b>Dalewood</b>			<b>392</b>				
	<b>Enrolment</b>	Eng 6 - 8		268			
		FI 6-8		109			
		<b>Total</b>		<b>377</b>			
<b>Utilization</b>				<b>96%</b>	<b>0%</b>	<b>0%</b>	<b>0%</b>
<b>G.R. Allan</b>			<b>498</b>				
	<b>Enrolment</b>	Eng JK - 5		220			
		Eng JK - 8			347	301	292
		FI SK-5		239			
		FI SK-8			302	268	255
	Mandarin JK-3				44	45	45
<b>Total</b>			<b>459</b>	<b>693</b>	<b>614</b>	<b>592</b>	
<b>Utilization</b>				<b>92%</b>	<b>139%</b>	<b>123%</b>	<b>119%</b>
<b>Prince Philip</b>			<b>233</b>				
	<b>Enrolment</b>	Eng JK - 5		154			
		Eng JK - 8			225	188	160
		FI SK-8			49	59	63
		Mandarin JK-3		29			
	<b>Total</b>			<b>183</b>	<b>274</b>	<b>247</b>	<b>223</b>
<b>Utilization</b>				<b>79%</b>	<b>117%</b>	<b>106%</b>	<b>96%</b>
<b>Total Utilization</b>				<b>91%</b>	<b>132%</b>	<b>118%</b>	<b>111%</b>

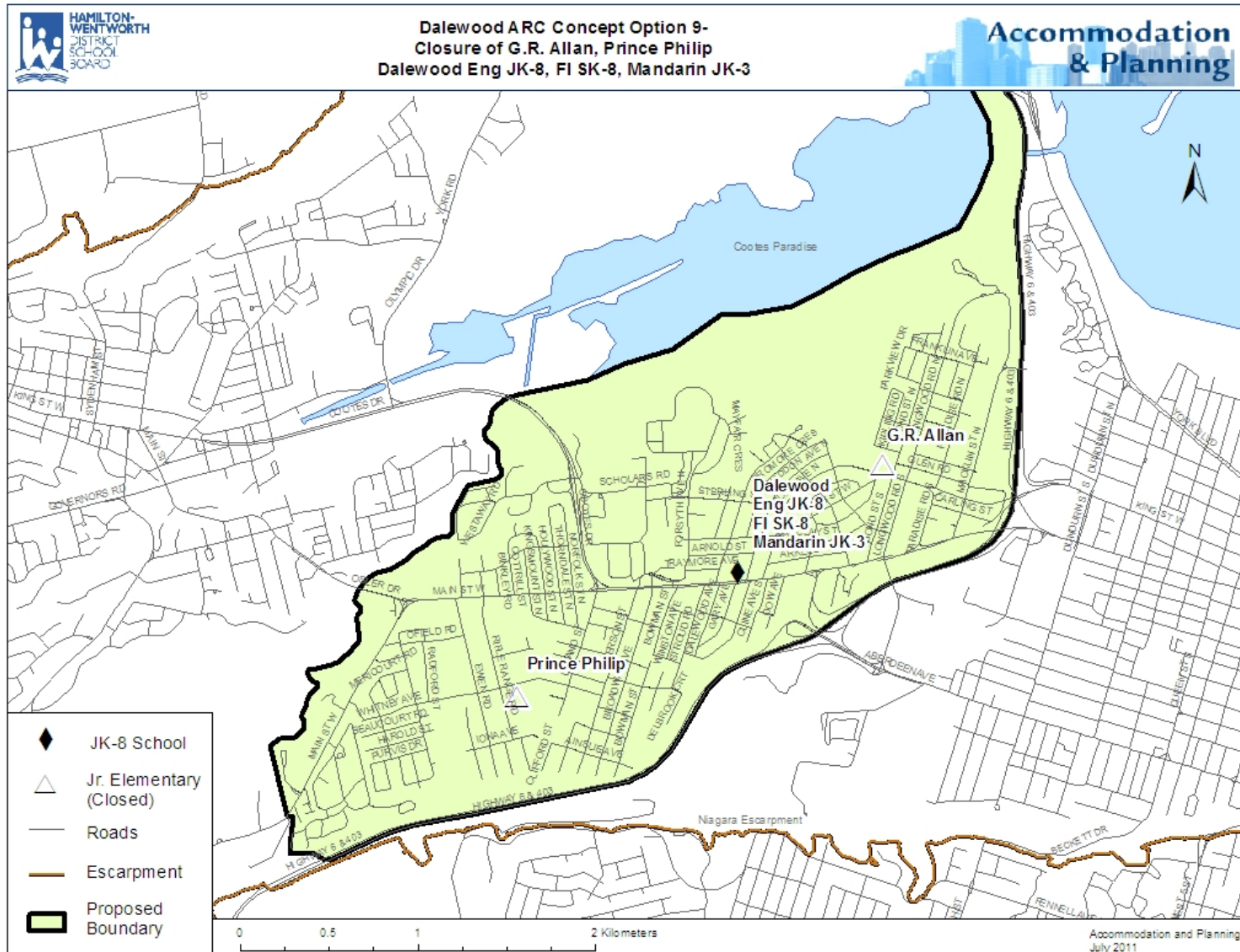
\*figures represent a 25% Mandarin student retention rate



## Arc Concept Option 4

			Capacity	2010	2012	2015	2020
<b>Dalewood</b>			<b>392</b>				
	<b>Enrolment</b>	<b>Eng 6 - 8</b>		268			
		<b>FI 6-8</b>		109			
		<b>FI SK-8</b>			350	326	318
		<b>Total</b>		377	350	326	318
<b>Utilization</b>			<b>96%</b>	<b>89%</b>	<b>83%</b>	<b>81%</b>	
<b>G.R. Allan</b>			<b>498</b>				
	<b>Enrolment</b>	<b>Eng JK - 5</b>		220			
		<b>Eng JK - 8</b>			572	489	452
		<b>FI SK-5</b>		239			
		<b>Mandarin JK-3</b>			44	45	45
<b>Total</b>		459	616	534	497		
<b>Utilization</b>			<b>92%</b>	<b>124%</b>	<b>107%</b>	<b>100%</b>	
<b>Prince Philip</b>			<b>233</b>				
	<b>Enrolment</b>	<b>Eng JK - 5</b>		154			
		<b>Mandarin JK-3</b>		29			
		<b>Total</b>		183			
<b>Utilization</b>			<b>79%</b>	<b>0%</b>	<b>0%</b>	<b>0%</b>	
<b>Total Utilization</b>				<b>91%</b>	<b>109%</b>	<b>97%</b>	<b>92%</b>

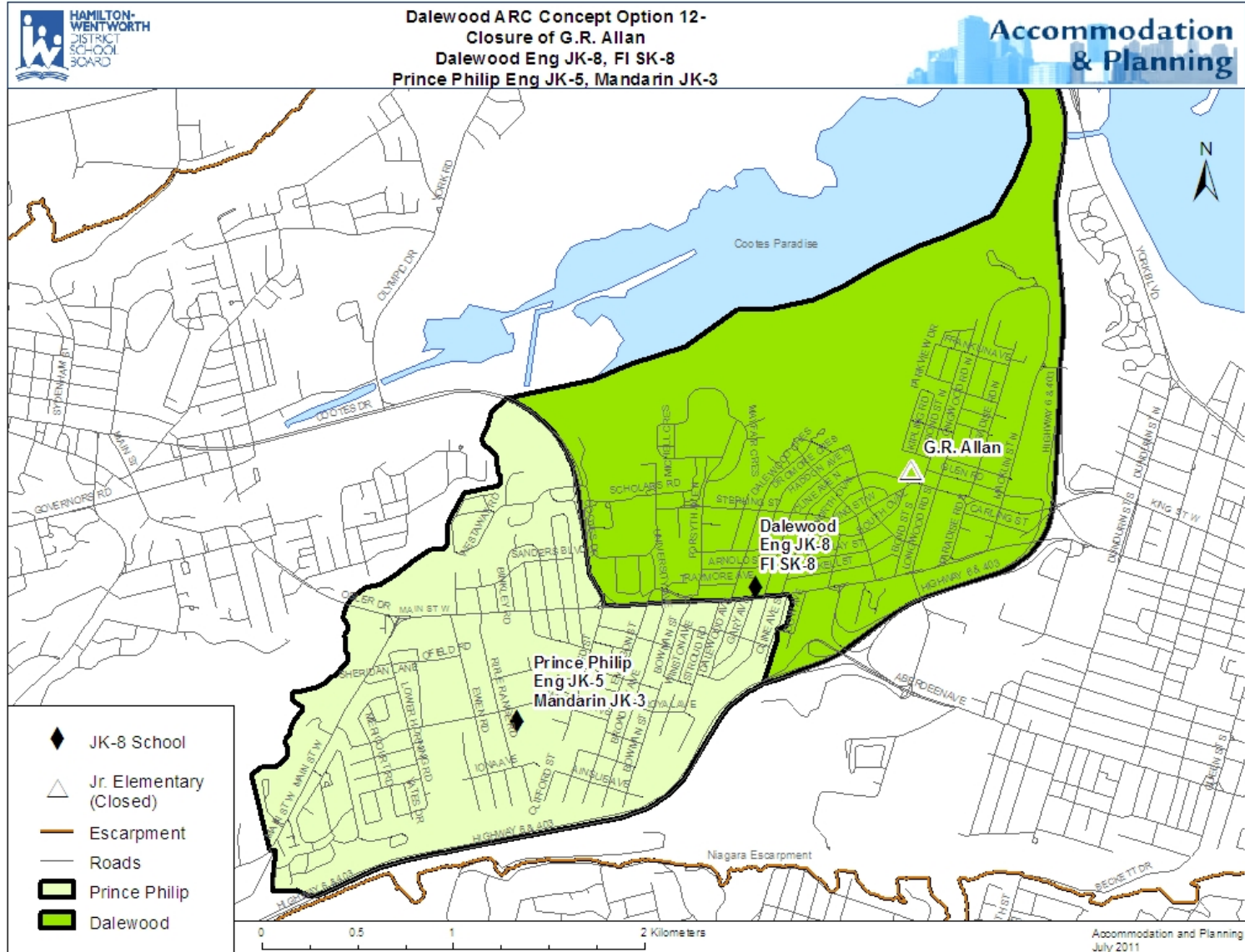
\*figures represent a 25% Mandarin student retention rate



## Arc Concept 'Super School' (Option 9 from data presented Sept.7, 2011)

	Capacity	2010	2012	2015	2020
<b>Dalewood</b>	<b>392</b>				
Enrolment		268			
Eng 6 - 8			572	489	452
Eng JK- 8					
FI 6-8		109			
FI SK-8			351	327	318
Mandarin JK-3			44	45	45
<b>Total</b>		<b>377</b>	<b>967</b>	<b>861</b>	<b>815</b>
<b>Utilization</b>		<b>96%</b>	<b>247%</b>	<b>220%</b>	<b>208%</b>
<b>G.R. Allan</b>	<b>498</b>				
Enrolment		220			
Eng JK - 5					
FI SK-5		239			
<b>Total</b>		<b>459</b>			
<b>Utilization</b>		<b>92%</b>	<b>0%</b>	<b>0%</b>	<b>0%</b>
<b>Prince Philip</b>	<b>233</b>				
Enrolment		154			
Eng JK - 5					
Mandarin JK-3		29			
<b>Total</b>		<b>183</b>			
<b>Utilization</b>		<b>79%</b>	<b>0%</b>	<b>0%</b>	<b>0%</b>
<b>Total Utilization</b>		<b>91%</b>	<b>247%</b>	<b>220%</b>	<b>208%</b>

\*figures represent a 25% Mandarin student retention rate





## Arc Concept Option 12

			Capacity	2010	2012	2015	2020
<b>Dalewood</b>			<b>392</b>				
	<b>Enrolment</b>	Eng 6 - 8		268			
		Eng JK- 8			422	330	303
		FI 6-8		109			
		FI SK-8			351	327	318
		<b>Total</b>		<b>377</b>	<b>773</b>	<b>657</b>	<b>621</b>
	<b>Utilization</b>		<b>96%</b>	<b>197%</b>	<b>168%</b>	<b>158%</b>	
<b>G.R. Allan</b>			<b>498</b>				
		Eng JK - 5		220			
		FI SK-5		239			
		<b>Total</b>		<b>459</b>			
	<b>Utilization</b>		<b>92%</b>	<b>0%</b>	<b>0%</b>	<b>0%</b>	
<b>Prince Philip</b>			<b>233</b>				
	<b>Enrolment</b>	Eng JK - 5		154	150	159	149
		Eng JK - 8					
		FI SK-8					
		Mandarin JK-3		29	44	45	45
		<b>Total</b>		<b>183</b>	<b>194</b>	<b>204</b>	<b>194</b>
	<b>Utilization</b>		<b>79%</b>	<b>83%</b>	<b>88%</b>	<b>83%</b>	
<b>Total Utilization</b>				<b>91%</b>	<b>155%</b>	<b>138%</b>	<b>130%</b>

\*figures represent a 25% Mandarin student retention rate



# Dalewood Accommodation Review Committee

## Working Group Meeting # 5

### *Additional Option Summaries*

Dalewood – G.R.Allan – Prince Philip

September 14, 2011