

Trustee Questions

Elementary Accommodation Reviews

West Glanbrook

Why was Bellmoore not included in the TOR given its overcapacity status and proximity to the accommodation area? Please provide a map of the area including all three schools.

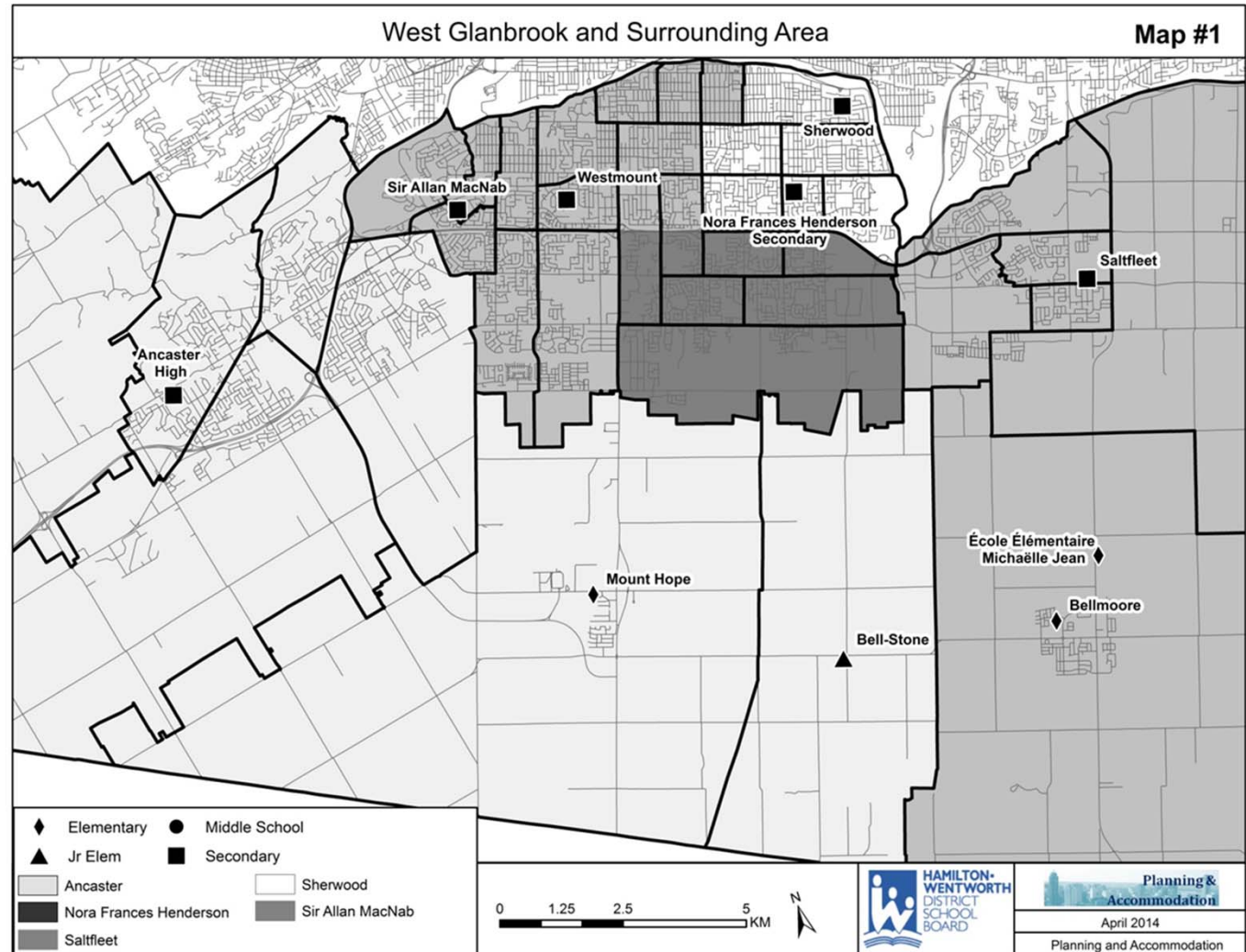
- Binbrook is a rapidly expanding community
- Board has identified two elementary sites to accommodate 600 pupil place schools within the Binbrook community to accommodate future growth
- One new school in the area by 2018 (or earlier depending on site availability)

Trustee Questions



Elementary Accommodation Reviews

West Glanbrook





Trustee Questions

Elementary Accommodation Reviews

West Glanbrook

The West Glanbrook ARC noted that Bellmoore should have been included in the review area. Can staff please share this rationale based on ARC meeting minutes? Was a post-ARC boundary review considered/requested?

- A post- accommodation review boundary change was not recommended by staff nor the ARC.



Trustee Questions

Elementary Accommodation Reviews

West Glanbrook

Where do the students from Mount Hope currently feed to for secondary school? Please provide a map of the accommodation area with the secondary schools surrounding it.

- Currently, graduates from Mount Hope Elementary attend Ancaster High for secondary school.
- Map #1 illustrates Bell-Stone, Bellmoore, Mount Hope and surrounding area.



Trustee Questions

Elementary Accommodation Reviews

West Glanbrook

How can an addition of one bus not add additional transportation funding?

- There are seven buses serving the Bell-Stone and Mount Hope students.
- The proposed closure of Bell-Stone will not increase the total buses needed. All seven buses will transport students to Mount Hope and no longer transport students to Bell-Stone. There would be an additional bus run required but no additional buses.



Trustee Questions

Elementary Accommodation Reviews

West Glanbrook

Are there any well water and septic implications of the consolidation to Mount Hope School? If so, what is involved?

- Mount Hope is connected to the city's system and therefore there will be no water or septic implications.



Trustee Questions

Elementary Accommodation Reviews

West Glanbrook

What is the feasibility of an express bus in order to reduce bussing time?

- The average bus ride for a Bell-Stone student is 38 minutes. The board policy states that the length of time on a vehicle will not normally exceed 60 minutes one way.
- It is approximately \$40,000 to add an additional bus.

Trustee Questions



Elementary Accommodation Reviews

West Glanbrook

Why couldn't Bell-Stone be used to accommodate Binbrook students before the school can be built in 2018. Why was Binbrook excluded from the review initially?

Bell-Stone has a capacity of approximately 180 students. There are currently 60 students, therefore only 120 spaces. Binbrook's expected growth far exceeds that.

Also, we believe new schools are the accommodation solution for Binbrook. Education Development Charges cover land acquisitions, but we have to put forward a strong business case to the Ministry of Education for school construction. The business case must clearly demonstrate the current situation and why we require a new school. If we disperse students among multiple communities, we will delay our ability to qualify for a new school in Binbrook.



Trustee Questions

Elementary Accommodation Reviews

West Glanbrook

How long will students continue to have a choice of attending either MacNab or Sherwood in the small boundary area identified by previous Board motion?

[Referring to West Glanbrook and Surrounding Area map]

Students currently attending Barton or Hill Park have a choice on where to attend secondary school. The choice only applies to these students and their siblings. Grade 8 students would attend their home school. We would anticipate that within three to four years all students would be attending their home school.



Trustee Questions

Elementary Accommodation Reviews

West Flamborough

For the recommended Beverly Community Centre partnership potential with the City of Hamilton, please commence your due diligence for the addition of a 350 pupil place school to this site keeping in mind the flood plain and wooded lot areas. Is this site viable to accommodate a 350 pupil place school?

- We are currently working with City of Hamilton staff to determine the viability of the Beverly Community Centre site. We will report back as soon as we have details.

Trustee Questions



Elementary Accommodation Reviews

West Flamborough

On page 9-41 the buses are to remain at 24 for the accommodation areas in question. How are the buses being distributed under the ARC and staff recommendations? What are the bus distances and lengths of time on the bus for the students, especially given that the northern portion of both areas will be transporting JK-primary students longer distances?

- Bus routes would be designed as part of the spring planning efforts immediately prior to any changes taking effect. Estimates on service requirements for the purposes of the ARC's were provided at a high level based upon the existing HWDSB transportation policy parameters, current service in the study area and general estimates of new ridership based on the proposed boundaries and grade compliments provided. More time is required to provide more detailed routing information.

Trustee Questions

Elementary Accommodation Reviews

West Flamborough

The ARC was very specific that staff look into rural transportation through an equity and compassion lens, especially when consolidating schools with very young children being transported longer distances. Did staff look through these lens when providing their responses

- Staff examined transportation as per current policy and guidelines

Trustee Questions



Elementary Accommodation Reviews

West Flamborough

Why does staff support a rural school of 525 students when this is out of the norm for all of our other rural schools? What are the sizes of the other rural schools including any staff recommendations of the ARCs underway?

- Our LTFMP guiding principles state that the optimal elementary school capacity should be between 500 – 600 students.

- | RURAL SCHOOL CAPACITIES | |
|-------------------------|----------|
| Name | Capacity |
| Tapleystown | 305 |
| Michaëlle Jean | 282 |
| Mount Hope | 365 |
| Bell-Stone | 181 |
| Queen's Rangers | 190 |
| Beverly Central | 230 |
| Spencer Valley | 248 |
| Greensville | 222 |
| Millgrove | 227 |
| Flamborough Centre | 254 |
| Balaclava | 420 |



Trustee Questions

Elementary Accommodation Reviews

West Flamborough

How many students by grade are currently coming down to school at Millgrove PS who live north of Regional Road 97? What are their current bus distances and times to Millgrove PS and what would they be to Spencer Valley?

- There are 5 students at Balaclava and 38 at Millgrove
- The longest bus ride to school for Millgrove is 45 minutes – as per the School Information Profiles (SIPs).
- More time is required to provide more detailed routing information.

Trustee Questions



Elementary Accommodation Reviews

West Flamborough

Same question as 5) for the children who attend Seaton and Beverly Central who may attend a new school on the Beverly Community Centre site?

- More time is required to provide more detailed routing information.



Trustee Questions

Elementary Accommodation Reviews

West Flamborough

Are there any well water and septic implications of the recommended consolidations at BC and SVS? If they need expansions, what's involved?

- The septic systems have reached the end of their life cycle. The systems require replacement regardless if they remain open or new schools are constructed on the same site.

Trustee Questions



Elementary Accommodation Reviews

West Flamborough

In the Long Term Facilities Master Plan (LTFMP) of 2013, Millgrove PS was not slotted to participate in any upcoming accommodation review. Why and how can staff now recommend closure on such short notice to the community?

- Millgrove was not part of the original LTFMP schedule presented at the June 10, 2013 Standing Committee. It was ratified by motion to be included at the Board meeting on June 17, 2013.
- The staff recommendation is consistent with the recommendation brought forward by the Accommodation Review Committee

Trustee Questions



Elementary Accommodation Reviews

West Flamborough

What are the renewal needs of Millgrove PS in years 1-5 and 6-10 compared to Mount Hope rural school, Spencer Valley and Beverly Central rural schools?

RENEWAL COSTS (High and Urgent 1-5 years)	STATUS QUO
Beverly Central	\$1,296,912
Dr Seaton	\$249,596
Greensville	\$1,193,084
Millgrove	\$568,382
Spencer Valley	\$974,684
RENEWAL COSTS (High and Urgent) Total (2)	\$4,282,658
REMAINING RENEWAL COSTS (Not High and Urgent 6+ years)	STATUS QUO
Beverly Central	\$1,598,270
Dr Seaton	\$2,568,216
Greensville	\$7,953,672
Millgrove	\$1,288,921
Spencer Valley	\$2,225,984
Remaining Renewal (Not High and Urgent) (3)	\$15,635,063

	<u>1-5</u>	<u>6-10</u>
Mount Hope	\$850,000	\$1,140,000
Bell-Stone	\$482,333	\$1,828,644
	\$1,332,333	\$2,968,644

Trustee Questions



Elementary Accommodation Reviews

West Flamborough

Does staff see Millgrove PS as having value given its proximity to Waterdown, a high growth area, as a spillover school for overcapacity schools or an alternative to portables?

There is currently an excess of 600 pupil places in the Waterdown community. There are three new schools identified as part of the EDC background study. Each school would have a capacity of approximately 600. The timing of the new schools will correlate with the projected development in Waterdown.

School	Capacity	Enrolment	Diff (Enrolment – Capacity)
Allan A. Greenleaf	492	508	16
Balaclava*	420	368	-52
Flamborough Centre	240	294	54
Guy Brown	638	539	-99
Mary Hopkins	385	328	-57
Waterdown DHS	1,701	1,170	-531
TOTAL	3,876	3,207	-669

*Reflects updated capacity

Source: HWDSB Long-Term Facilities Master plan



Trustee Questions

Elementary Accommodation Reviews

West Flamborough

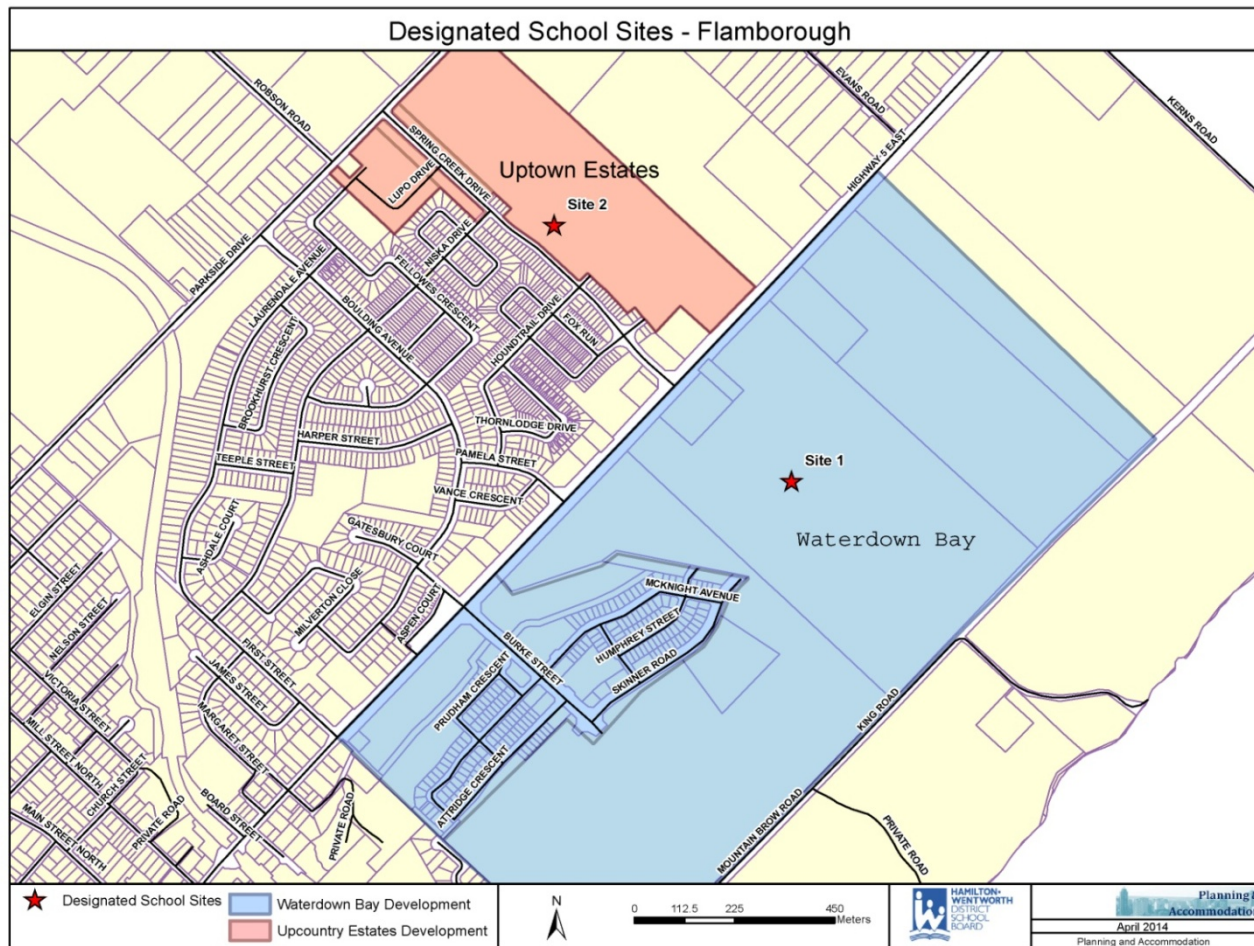
Can you tell me where and when the planned land acquisition is/will be in East Waterdown/Flamborough? It was supposed to be in Phase 11 of Upcountry estates. Is this still the site preference? What are the road crossings for the preferred site? Thanks as I am getting inquiries as to where and when.

Using the 2013 EDC-By law as a reference, the proposed year of acquisition for the Up Country Phase 11 designated school site (East Waterdown 6 acres) is 2026. The acquisition for the Waterdown South site (approx. 6 acres) is 2014. South of Dundas St. E., east of Mill St. S., north of Mountain Brow Rd. and west of Kern's Rd. in Waterdown. Site is in Phase 2 of the Waterdown South development on Skinner Rd. E.

Trustee Questions



Elementary Accommodation Reviews West Flamborough

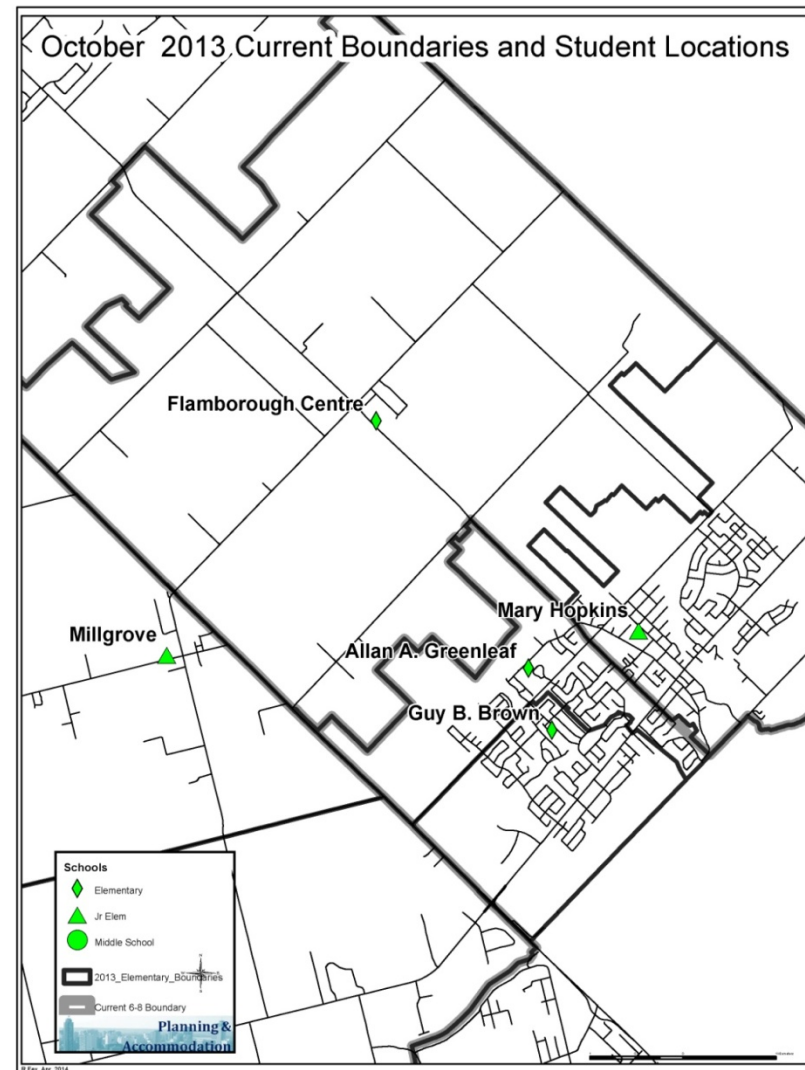


Trustee Questions



Elementary Accommodation Reviews West Flamborough

**Please provide a map of all of the
Waterdown schools and their proximity
to Millgrove PS.**





Trustee Questions

Elementary Accommodation Reviews

West Flamborough

Appendix C page 9-59. The Required Capital Projects without Ministry Funding chart has FDK and Classroom additions listed as an expense but does not show any FDK funding, why?

The FDK funding line is meant to capture available funding. These schools have already been provided funding when they received FDK. This means those schools do not qualify for further FDK allocated dollars.

Trustee Questions



Elementary Accommodation Reviews

West Flamborough

What are the names and dates of other rural school closures in the past?

Rural Properties Closed/Sold Since Amalgamation 1998-2010	
Schools Closed	Year Closed
Parkwood	2003
Lynden	2003
Sheffield	2003
Strabane	1979
Freelton	?

Trustee Questions



Elementary Accommodation Reviews

West Flamborough

In our criteria of Value to the Student and Value to the School Board, proximity to the school, length of bus ride and value of the school if it is the only school within the community, how did staff decide to recommend leaving a school in Rockton, Greensville but not Millgrove? Sheffield, Lynden, Freelton, Strabane etc have already lost their community schools over the years. How do we value our rural schools into the future?

The guiding principles provide the framework for decision making, which is a key component in the development and implementation of the Long Term Facilities Master Plan. Principles identified include:

- Facilities supporting quality teaching and learning
- Optimal school utilization rates
- Alignment with our Program Strategy
- School size, organization, and site size
- Transportation and accessibility
- Flexible learning environments for 21st century learning, and
- Neighbourhood and community access



Trustee Questions

Elementary Accommodation Reviews

West Flamborough

Why close Millgrove over Rockton? What considerations went in to this decision?

The Accommodation Review Committee brought forward the recommendation to construct two new schools as part of the accommodation solution. In order to make strong business cases to the Ministry, we have to take everything into consideration. The strength of the business case to construct two new schools is based on the closure of the remaining schools.



Trustee Questions

Elementary Accommodation Reviews

West Flamborough

Will septic tanks be eliminated for new schools in West Flamborough?

Our septic tank guiding principle is as follows:

- If servicing is available then we will no longer be on septic.
- If servicing is not available, we would be required to replace septic with septic.

Trustee Questions



Elementary Accommodation Reviews

West Flamborough

Are we still trying to fit the LTFMP Guiding Principles to all schools, knowing that small and rural do not fit this model? Is there any flexibility being used by staff around this?

The Guiding Principles are flexible. They all can't be used in every circumstance. Staff's job is to put forward a recommendation to start the process, listen very closely to what ensues and then, where possible, respond with a recommendation that brings into account most of the Guiding Principles.

In the case of Flamborough, the committee had a preference. Staff looked at that preference and put forward the same preference in front of this board .

Staff rationale is to use as many Guiding Principles as possible and to listen closely to the committee.



Trustee Questions

Elementary Accommodation Reviews

West Flamborough

Bus ride times – North of Regional Road 97 is not correct. Can staff please re-evaluate this? What will the new travel time be for students attending Spencer Valley?

****this question is to come back for April 14**

Trustee Questions



Elementary Accommodation Reviews

West Flamborough

Please provide details for the 600 excess pupil places as it related to Elementary Schools. Where are these places in terms of school sites.

Trustee Questions



Elementary Accommodation Reviews

East Hamilton

Why were there no parent representatives from Hillcrest on the ARC membership?

- No volunteers from the Hillcrest community came forward.

Trustee Questions



Elementary Accommodation Reviews

East Hamilton

WH Ballard has an OTG of 840 students. What is the history of this size of a school?

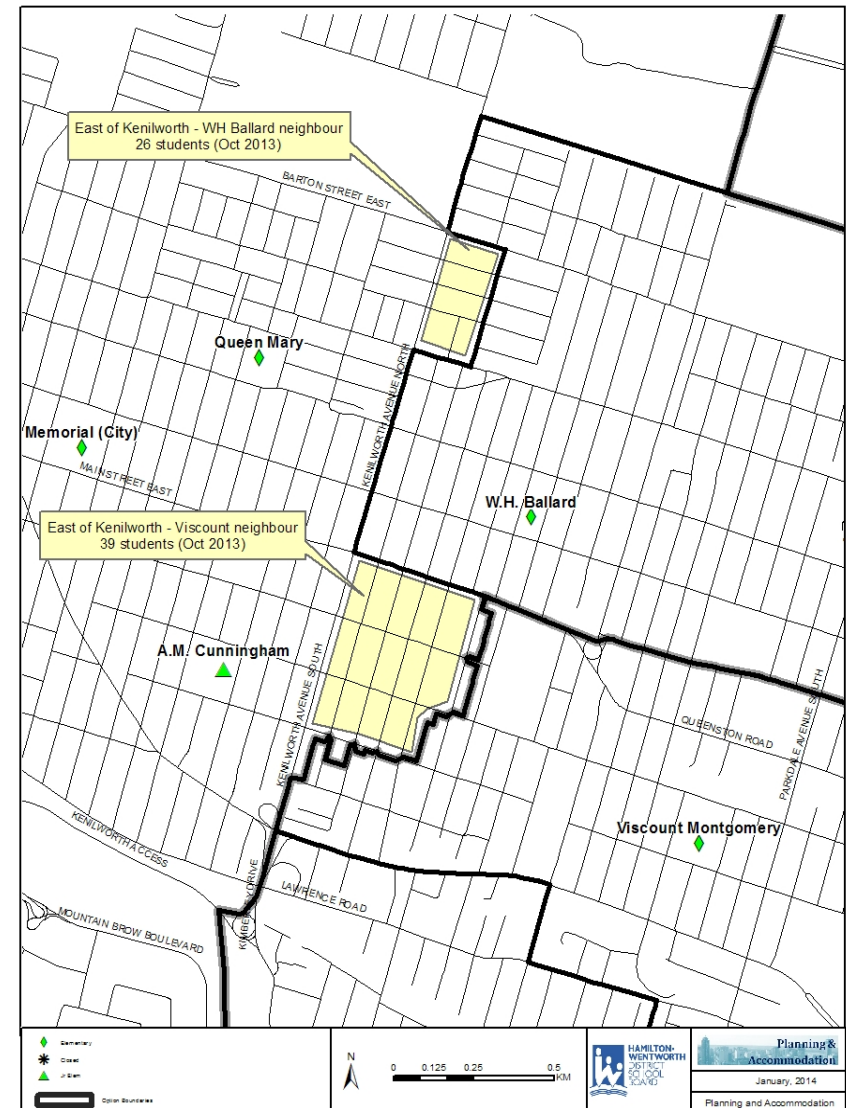
- Originally built as a high school that accommodated over 1000 students

Trustee Questions



Elementary Accommodation Reviews East Hamilton

Please provide a map including AM Cunningham and Queen Mary schools re page 10-15 Trustee Consideration of a further boundary review with schools outside the accommodation review area?



Trustee Questions



Elementary Accommodation Reviews

East Hamilton

The bussing estimates are not consistent. Please verify which is more correct. On page 10-20 the bussing is estimated as a \$231,000 increase annually (increase of 300 students becoming bus eligible) and on page10-41, the estimated cost difference is \$192,000?

- The total cost for the option is \$231,000. The \$192,000 represents the difference between cost now and costs with the option

Trustee Questions



Elementary Accommodation Reviews

East Hamilton

How did the ARC react to a JK-5 school merging with a JK-8 school as the newcomers are often considered "outsiders" to an established student population? Any concerns? Do the grade 8 students feed to the same secondary school(s)?

- ARC recommendation #1 closes all JK-5 schools and moves students into JK-8 facilities.
- ARC recommendation #2 retains two JK-5 facilities.
- Yes, the grade 8 students feed to the same secondary schools.



Trustee Questions

Elementary Accommodation Reviews

East Hamilton

What approach/lens did staff use when choosing the school boundaries for my requested scenarios presented at the March 31 Board meeting?

Staff used the following criteria when developing the requested scenarios presented on March 31:

- Retained the alignment between junior and senior associated schools (eg.XX)
- Honoured boundary changes discussed with ARC members
- Maximizing walking distances
- Keeping neighbourhoods and streets together (eg. townhouse complexes)

Trustee Questions



Elementary Accommodation Reviews

East Hamilton

Can staff please clarify from the ARC report/meeting minutes whether the ARC's two recommendations are ranked?

- According to the minutes, the options were not ranked (*Minutes WG Mtg #8 - Item 6*)
- **Vote - Identify if Option 2 or Option 3 is your top priority to get a feel - Option 2 (8) votes / Option 3 (9) votes (secret ballot)**

Comments

- No expectation to rank - can put both forward equally
- Visually, which would appear first - can perhaps note in wording "in no particular order"
- How would you consider options equal on a 9:8 vote
- Calculated as a percentage, each would appear very similar
- One option did not stand out so do we really need to rank
- Not worth ranking at this point - have two viable options
- **Vote: Listing both Option 3 and Option 2 with no reference to ranking - YES in favour (16) votes / NO not in favour (1) votes (secret ballot)**

Trustee Questions



Elementary Accommodation Reviews

East Hamilton

Can staff please provide a detailed scenario as per the boundaries indicated in the attachment (boundaries illustrations)? Woodward and Roxborough Park would close in June 2015. The other schools would remain open.

Trustee Questions



School	OTG	2012	2015	2018	2022
Hillcrest	696	483	636	593	545
		70%	91%	85%	78%
Parkdale	291	175	343	381	370
		60%	118%	131%	127%
Rosedale	236	149	204	223	210
		63%	86%	94%	89%
Roxborough Park	371	220	0	0	0
		59%	0%	0%	0%
Viscount Montgomery	475	345	262	234	237
		74%	55%	49%	50%
W.H. Ballard	840	577	522	456	412
		69%	62%	54%	49%
Woodward	201	131	0	0	0
		65%	0%	0%	0%
Total	3,110	2,080	1,967	1,887	1,775
		67%	77%	74%	70%

School	Current Grade Organization	2015 Implementation
Hillcrest	JK-8	JK-8
Parkdale	JK-5	JK-8
Rosedale	JK-5	JK-8
Roxborough Park	JK-5	Closed
Viscount Montgomery	JK-8	JK-8
WH Ballard	JK-8	JK-8
Woodward	JK-5	Closed

New Capacity 2015: 2,538

New Enrol Totals + 65

• Consolidate Hillcrest, Woodward, and a portion of Parkdale and Rox Park into Hillcrest in 2015

– Minimal construction/renovation costs

• Rosedale becomes JK-8 and receives a part of Viscount

• Viscount Montgomery no longer receives Rosedale students PLUS 40

– Utilization remains low

• WH Ballard no longer receives Parkdale students and receives PLUS 25

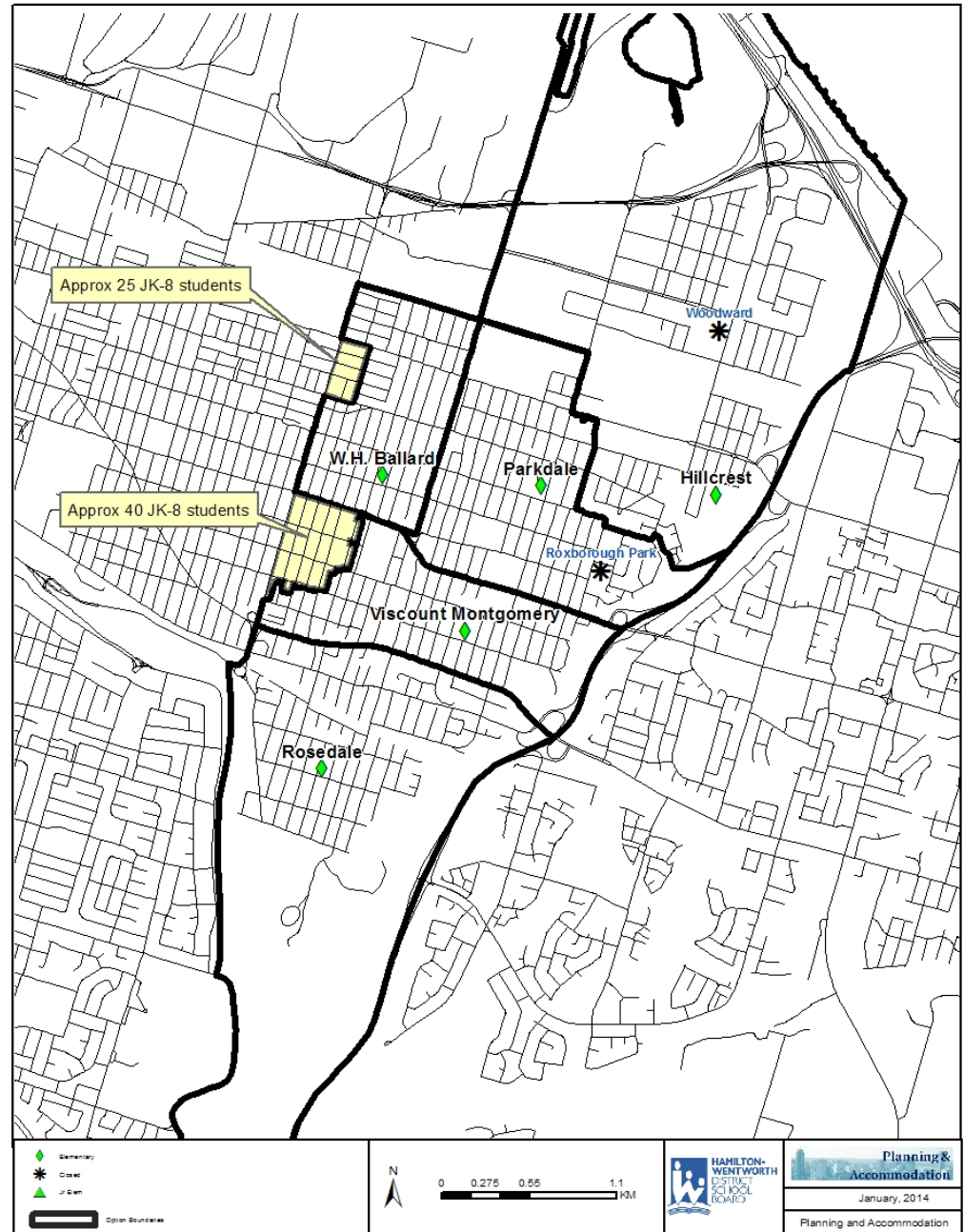
– Utilization remains low

• Parkdale becomes JK-8 and receives a portion of Rox Park and Viscount

• Overall utilization remains low

Trustee Questions

Elementary Accommodation Reviews East Hamilton





Trustee Questions

Elementary Accommodation Reviews

East Hamilton

Can staff please provide a detailed scenario as per the boundaries indicated in the attachment (boundaries illustrations)? Woodward and Roxborough Park would close in June 2015. The other schools would remain open.

Trustee Questions



School	OTG	2012	2015	2018	2022
Hillcrest	696	483	636	593	545
		70%	91%	85%	78%
Parkdale	291	175	206	253	248
		60%	71%	87%	85%
Rosedale	236	149	204	223	210
		63%	86%	94%	89%
Roxborough Park	371	220	0	0	0
		59%	0%	0%	0%
Viscount Montgomery	475	345	399	362	359
		74%	84%	76%	76%
W.H. Ballard	840	577	522	456	412
		69%	62%	54%	49%
Woodward	201	131	0	0	0
		65%	0%	0%	0%
Total	3,110	2,080	1,967	1,887	1,775
		67%	77%	74%	70%

School	Current Grade Organization	2015 Implementation
Hillcrest	JK-8	JK-8
Parkdale	JK-5	JK-8
Rosedale	JK-5	JK-8
Roxborough Park	JK-5	Closed
Viscount Montgomery	JK-8	JK-8
WH Ballard	JK-8	JK-8
Woodward	JK-5	Closed

New Capacity 2015: 2,538

New Enrol Totals + 65

•Consolidate Hillcrest, Woodward, and a portion of Parkdale and Rox Park into Hillcrest in 2015

–Minimal construction/renovation costs

• Rosedale becomes JK-8 and receives a part of Viscount

• Viscount Montgomery receives a portion of Rox Park, no longer receives Rosedale students, PLUS 40

–Utilization remains low

• WH Ballard no longer receives Parkdale students and receives PLUS 25

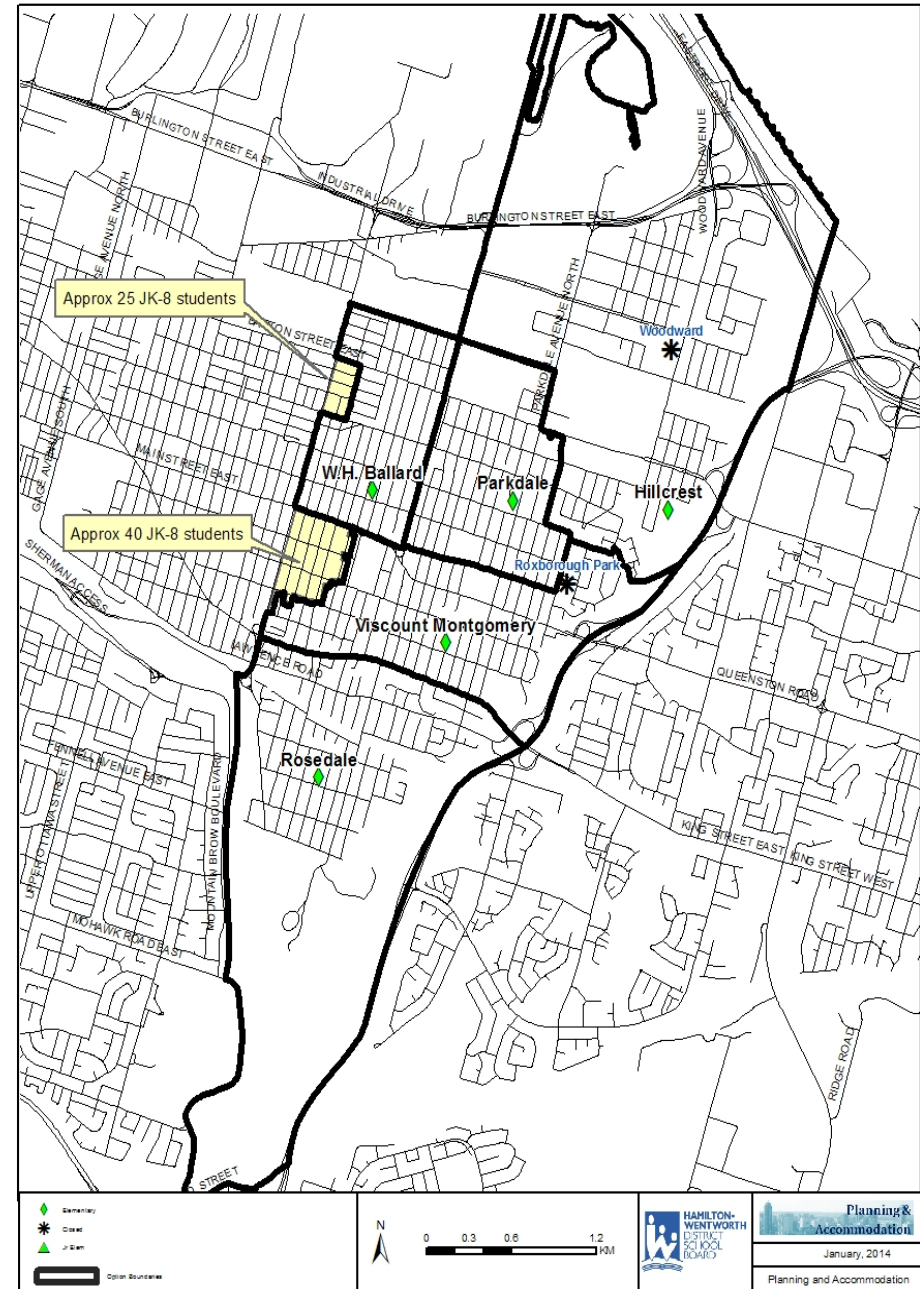
–Utilization remains low

• Parkdale becomes JK-8 and receives a portion of Rox Park

•Overall utilization remains low

Trustee Questions

Elementary Accommodation Reviews East Hamilton





Trustee Questions

Elementary Accommodation Reviews

Central Mountain

Is the staff recommendation the same as any of the 35 options of the ARC?

None of the 35 options that were examined by the accommodation review committee had the combination of closing only Cardinal Heights, Eastmount Park and Linden Park.

Trustee Questions



Elementary Accommodation Reviews

Central Mountain

How did the ARC react to JK-6 schools merging with JK-8 schools as newcomers are often "outsiders" to an established student population? Any concerns and do they feed to the same secondary schools as a group of grade 8 students?

- ARC recommendation #1 changes the grade configuration at three existing schools.
- ARC recommendation #2 does not change grade configurations.
- Not all schools in the Central Mountain Accommodation Review attend the same secondary school. Students graduating from Franklin Road attend Sherwood. Currently, students who live south of the Lincoln Alexander Parkway have a choice to attend Nora Frances Henderson Secondary or Sir Allan MacNab. The graduates living in the Eastmount Park boundary can attend either Sherwood or Sir Allan MacNab. All other students attend Sir Allan MacNab.

Trustee Questions



Elementary Accommodation Reviews

All accommodation reviews

How many schools will be coming out of the staff proposals with a JK-8 program with less than 600 students?

All the schools in the proposed staff options are JK-8 schools. Of the eleven schools proposed to remain open two are projected to have an enrolment of over 600. Three schools would have an enrolment between 500 and 600, two schools would have an enrolment between 400 and 500 and the remaining four would have an enrolment less than 400.

Central Mountain	Grade Structure	Capacity	Enrolment
Franklin Road	JK-8	483	476
G.L. Armstrong	JK-8	633	509
Pauline Johnson	JK-8	400	405
Queensdale	JK-8	279	282
Ridgemount	JK-8	382	361
East Hamilton	Grade Structure	Capacity	Enrolment
Hillcrest	JK-8	696	699
New School	JK-8	550	554
W.H. Ballard	JK-8	840	622
West Flamborough	Grade Structure	Capacity	Enrolment
New School #1	JK-8	350	356
New School #2	JK-8	525	534
West Glanbrook	Grade Structure	Capacity	Enrolment
Mount Hope	JK-8	365	361



Trustee Questions

Elementary Accommodation Reviews

Central Mountain

If looking at boundaries, will staff take into account socio-economic factors?

- When looking into elementary school boundaries, Planning and Accommodation takes into consideration student enrolment density, natural boundaries (major roads, geographic), proximity of other schools and associated secondary school boundaries. Socio-economic factors are taken into consideration where possible.

Trustee Questions



Elementary Accommodation Reviews

Central Mountain

Why did the staff decision change after the ARC report was completed and report submitted? What was the rationale for the final recommendation over the initial staff thinking?

Staff's recommendation using certain rationale may or may not match the community's, which is based on the rationale they use, and may or may not match the rationale that this Board wishes to use. Our voice need not have any more influence than the voices of the community, which may be different. As you can see from these recommendations, staff has a very strong rationale around a K-8 school. The reason for that rationale is based on research which speaks to minimizing transitions. So in the Central Mountain recommendations from staff, you see that first and foremost. You also see us responding to concerns in that particular community regarding their definition of where community lines are.

Trustee Questions



Elementary Accommodation Reviews

Central Mountain

In terms of the Central Mountain ARC and the 35 options presented to the ARC Committee, are any of these options the same or similar to those presented?

****this question is to come back for April 14**

Trustee Questions



Elementary Accommodation Reviews

All Accommodation Reviews

Have we abandoned our rationale of most elementary schools with 600 pupils? Will the same programming be available across the city at all schools?

We have not abandoned the approved Guiding Principles. We cannot use all of the Guiding Principles in every scenario and we've put forward to Trustees what we thought we heard the community say and that's what you see. But again, the Board may make different choices around that.

We do our best to meet as many Guiding Principles as possible. Different communities are asking for different things. Staff's job is to look at the Guiding Principles we have set forward.

Also, we are learning how to provide some programs in other ways (e.g. sending music teachers to different schools).

Trustee Questions



Elementary Accommodation Reviews

All Accommodation Reviews

Now that FDK five-year implementation is complete, where will the funding come from for renovations that need to be made to schools once we close a school in the area? Are we closing schools which were funded by the Ministry for FDK?

We received funding for full-day kindergarten and had funding held over for FDK projects we have not yet undertaken. Some schools were going through ARCs or we knew they were coming into an ARC and did not invest full-day kindergarten funds. For schools early on in the process, funding was already allocated to them from our FDK funding so therefore in the Ministry's eyes, we have done our FDK work at those schools and now we have to go back and any changes we would have to make we would do out of our own budget. The challenge of Ministry FDK funding was asking us to identify early on where the schools would be, prior to any kind of long-term facilities master plan or accommodation review schedule. We did our best to reduce or change scope to ensure we weren't investing in brand new spaces.



Trustee Questions

Elementary Accommodation Reviews

All Accommodation Reviews

Is staff reviewing sites with septic tanks and monitoring them for leakage?

Staff reviews the state of septic systems on an annual basis to ensure their capacity, how much is in there, the backflow, the proper flow.

Should the Board choose to sell a site, once the site is no longer in its possession, it is the new landowner's responsibility to maintain, review or monitor the septic bed. While any site is within our ownership, HWDSB would continue to maintain, review the septic bed.