

NEW ELEMENTARY SCHOOL ON CH BRAY SITE COMMUNITY INFORMATION SESSION

July 17, 2018

6:00 p.m.

CH Bray Elementary School

Alex Johnstone

Trustee Wards 11 & 12 (Vice-Chair)

Jane Macpherson

Superintendent of Student Achievement

Nadeen Shehaiber

Manager - Capital Projects

Devon Krymuza

Project Supervisor – Capital Projects

- Preliminary Plans for Elementary School
- Overview of Time lines
- Next Steps
- Questions

On March 13, 2018, the Ministry of Education announced \$12.2 million in funding to build a 495 pupil place elementary school with a 3 room child care centre at the current CH Bray elementary school site to support the consolidation of Fessenden and Queen's Rangers.

PRELIMINARY PLANS FOR NEW ELEMENTARY SCHOOL

curiosity

creativity

possibility

- Approximately 50,000 square foot, two storey building
- 18 classroom and 4 kindergarten rooms
- 3 room child care centre (1 infant, 1 toddler and 1 preschool)
- 5,500 square foot gym with stage



PRELIMINARY



PERSPECTIVE- EAST ELEVATION



PERSPECTIVE- WEST ELEVATION

PRELIMINARY

curiosity

creativity

possibility



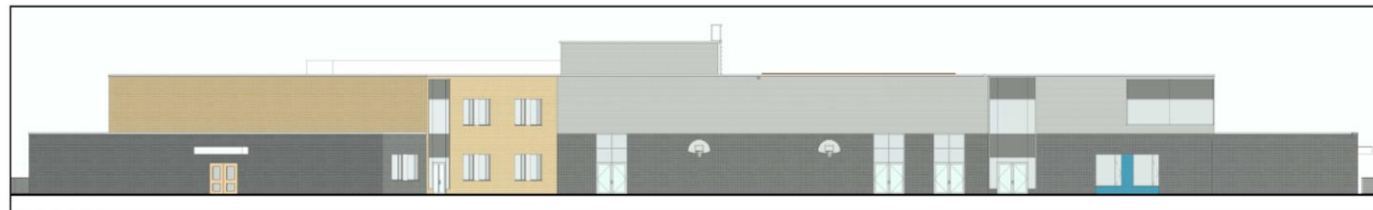
EAST ELEVATION



SOUTH ELEVATION



WEST ELEVATION



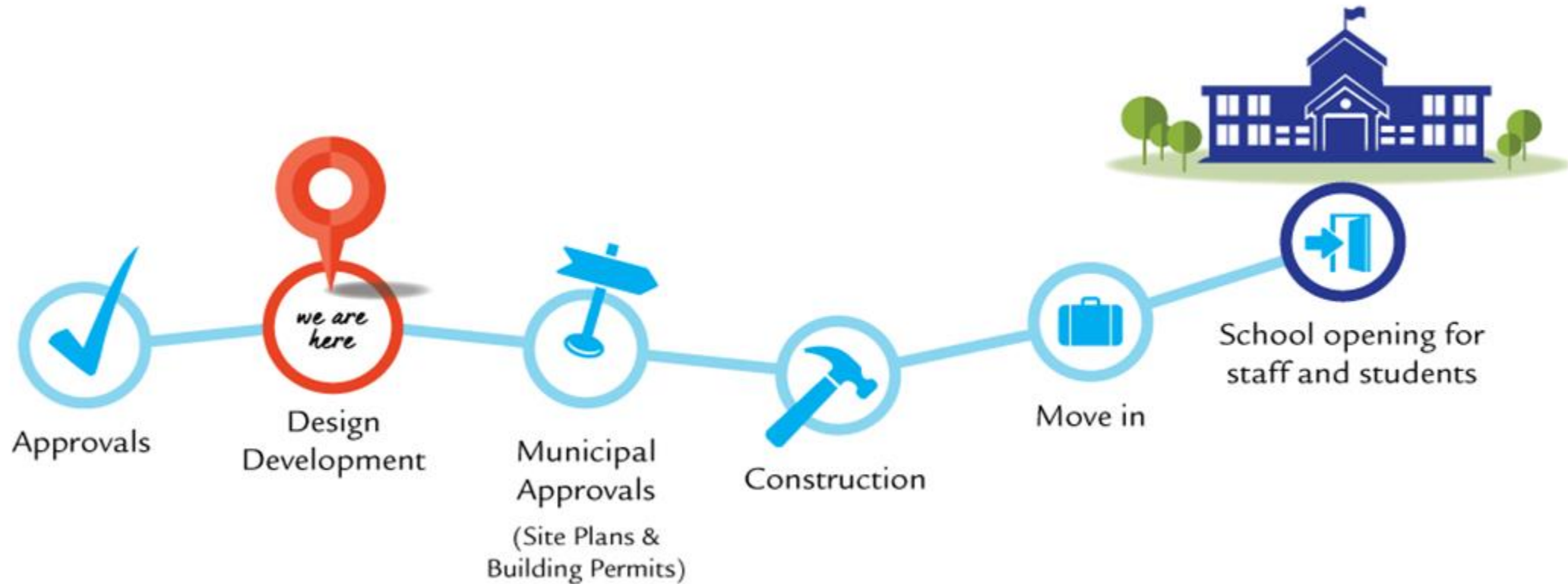
NORTH ELEVATION

PRELIMINARY

curiosity

creativity

possibility



- Project is currently in Design Development Phase

- Submission of Site Plan Application
- Ongoing design development and engineering
- Coordination with City of Hamilton to obtain municipal approvals
- Ongoing communication with community for updates



curiosity

creativity

possibility