

# Summit Park - Boundary Review Advisory Panel Meeting

*Billy Green, Janet Lee, New Summit Park  
and Tapleytown*

March 22, 2018

curiosity

creativity

possibility

Jeff Gillies	Superintendent of Student Achievement
Ian Hopkins	Planner – Planning & Accommodation
Tanya Shaver	Executive Assistant
Brandon Berketa	Principal – Billy Green
Julie Anderson	Principal – Janet Lee
Doug Dunford	Principal – Tapleystown
Jeff Beattie	Trustee – Wards 9 & 10
Alex Johnstone	Board Vice-Chair, Trustee – Wards 11 & 12

- a) Boundary Review Procedure
- b) Timelines
- c) Rationale for Change
- d) A Proposal for Consideration
- e) Community Consultation

# **HWDSB** MANDATE OF THE ADVISORY PANEL

---

The mandate of the Boundary Review Advisory Panel is to advise the Superintendent of Student Achievement of possible options after reviewing the guiding principles, receiving community input and providing local expertise.

**Boundary Review Policy 2.1**

curiosity

creativity

possibility

The Boundary Review Advisory Panel may include the following members:

- Family of Schools Superintendent(s)
- Planning & Accommodation Staff
- Trustees of affected schools
- Principals of affected schools
- Up to two School Council Representatives from affected schools
- Up to two Home and School Association Representatives from affected schools

**Boundary Review Procedure 2.1**

# HWDSB BOUNDARY REVIEW PROCEDURES

---

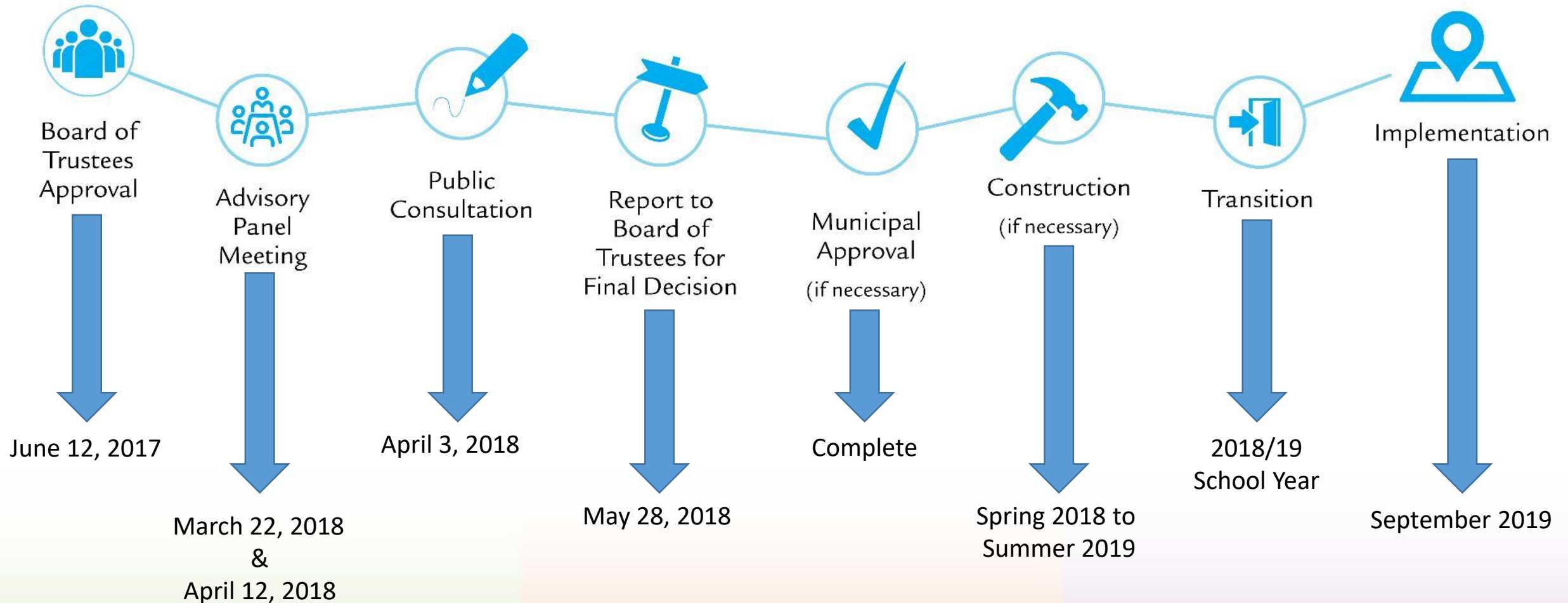
- The Superintendent of Student Achievement and Planning & Accommodation will hold a public meeting to allow the community an opportunity to provide input regarding the recommendation(s).
- The Superintendent of Student Achievement and Planning & Accommodation will review community feedback and make a final recommendation(s) at a Standing Committee or Regular Board meeting.
- The Superintendent of Student Achievement and Planning & Accommodation will present their recommendation, through the Director of Education, as well as the results of community consultation to the Board for their approval.

Procedure for Policy 2.1

curiosity

creativity

possibility



curiosity

creativity

possibility

At the June 12, 2017, Board meeting, Trustees approved the Accommodation Strategy Schedule. The Accommodation Strategy Schedule includes a **boundary review to create a JK-8 boundary for the new school on the Summit Park site**, located on the corner of Keystone Crescent and Bellagio Avenue south of Rymal Road East.



# HWDSB RATIONALE FOR BOUNDARY REVIEW

---

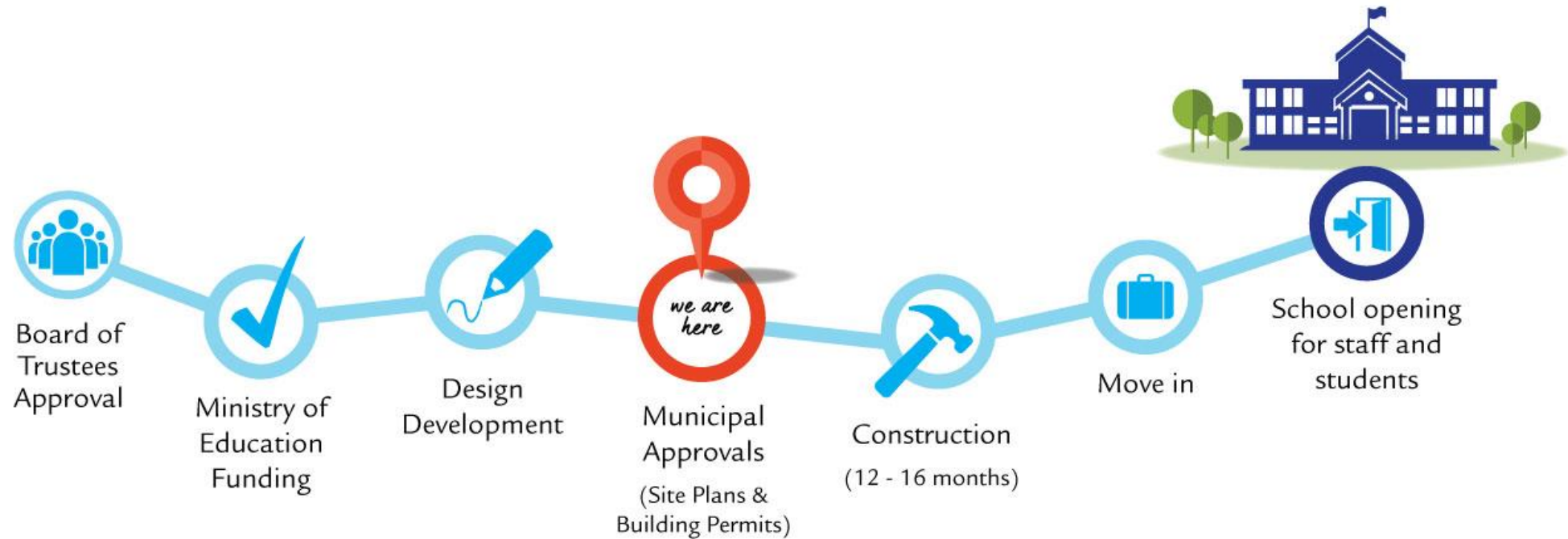
- Create a new K-8 boundary for the school on Summit Park site by modifying Billy Green, Janet Lee and Tapleystown boundaries.
- Goal for all schools is to balance enrolment, reduce accommodation pressure, reduce reliance on temporary accommodation and improve walk-ability.
- Seek community input on the formation of the new boundary and modification of existing boundaries.

## *Summit Park School Information*

curiosity

creativity

possibility



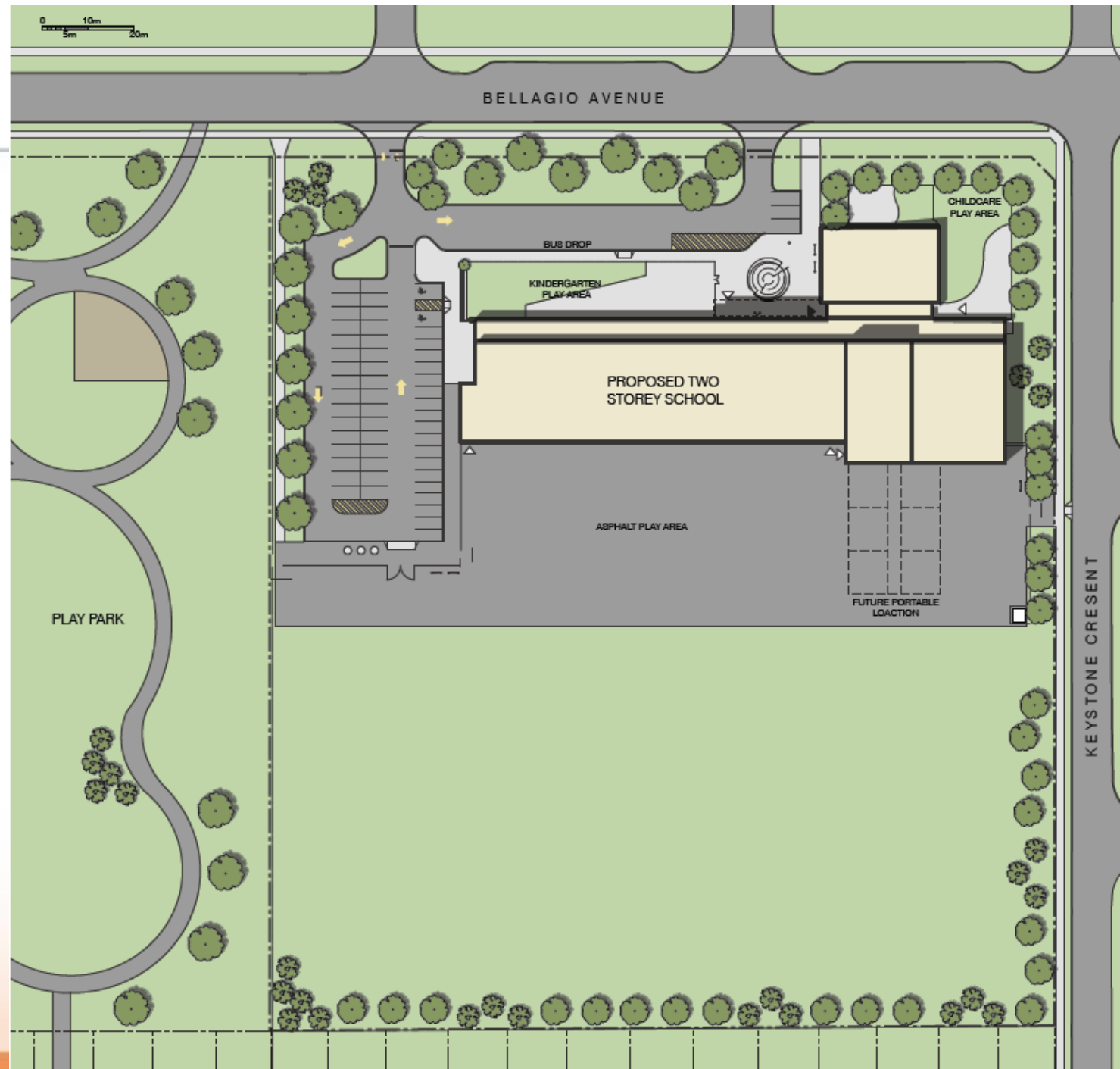
- Projected completion for 2019/2020 school year.

# HWDSB

## NEW SUMMIT PARK SITE SCHOOL

- 625 pupil place K-8 school
- \$14,388,899 in funding
- 3-room Childcare centre
- 2-storey building
- Bus drop-off area
- 8+ acre site

Note: Image of proposed site plan and is subject to change



# HWDSB

- 18 Classrooms
- 1 Special Education
- 5 Kindergarten
- Music Room
- Art Room
- Science Room
- Learning Commons
- Gym with Stage



Note: Plans and perspectives are artist rendering and final building may not be as shown)

curiosity

creativity

possibility

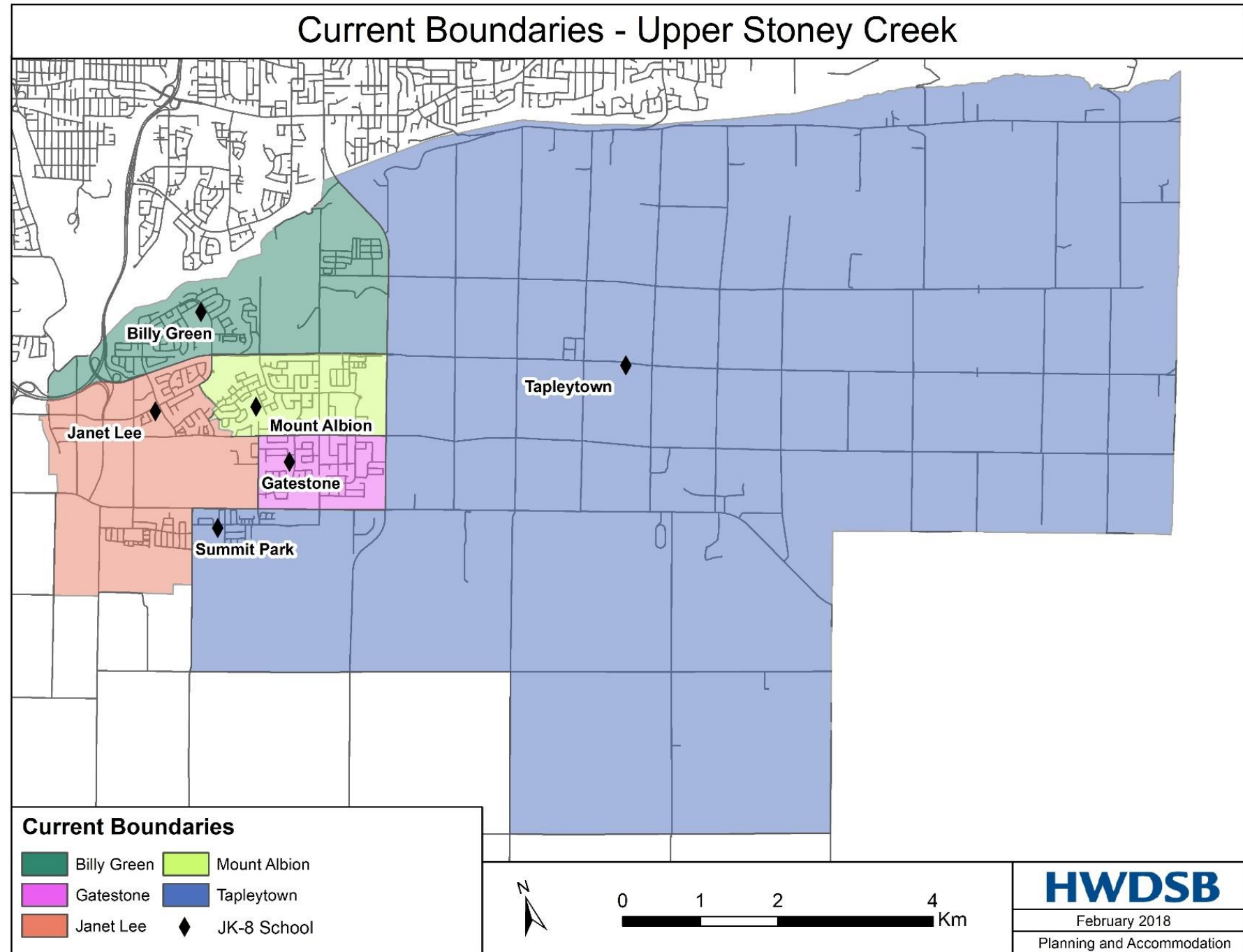
## *Current Boundaries, Enrolments, & Proposed New Boundary*

curiosity

creativity

possibility

- Currently, five JK-8 elementary schools within Upper Stoney Creek area.
- Proposed boundary review will include Billy Green, Janet Lee, Tapleytown and new Summit Park School.



- **2015** – Hockey program moved from Billy Green to Tapleytown to alleviate enrolment pressure at Billy Green
- **2016** – Billy Green receives 6 additional portables for total of 8
- **2016** – Tapleytown receives 2 portables
- **2016** – HWDSB receives \$14.3 million in funding for Summit Park
- **2017** – Tapleytown receives 2 additional portables for total of 4
- **2017** – Janet Lee receives 2 additional portables for total of 4
- **2017** – Mount Albion receives 3 additional portables for total of 7
- **2018** – Mount Albion receives \$4.9 million in funding for 10 classroom addition and new childcare centre

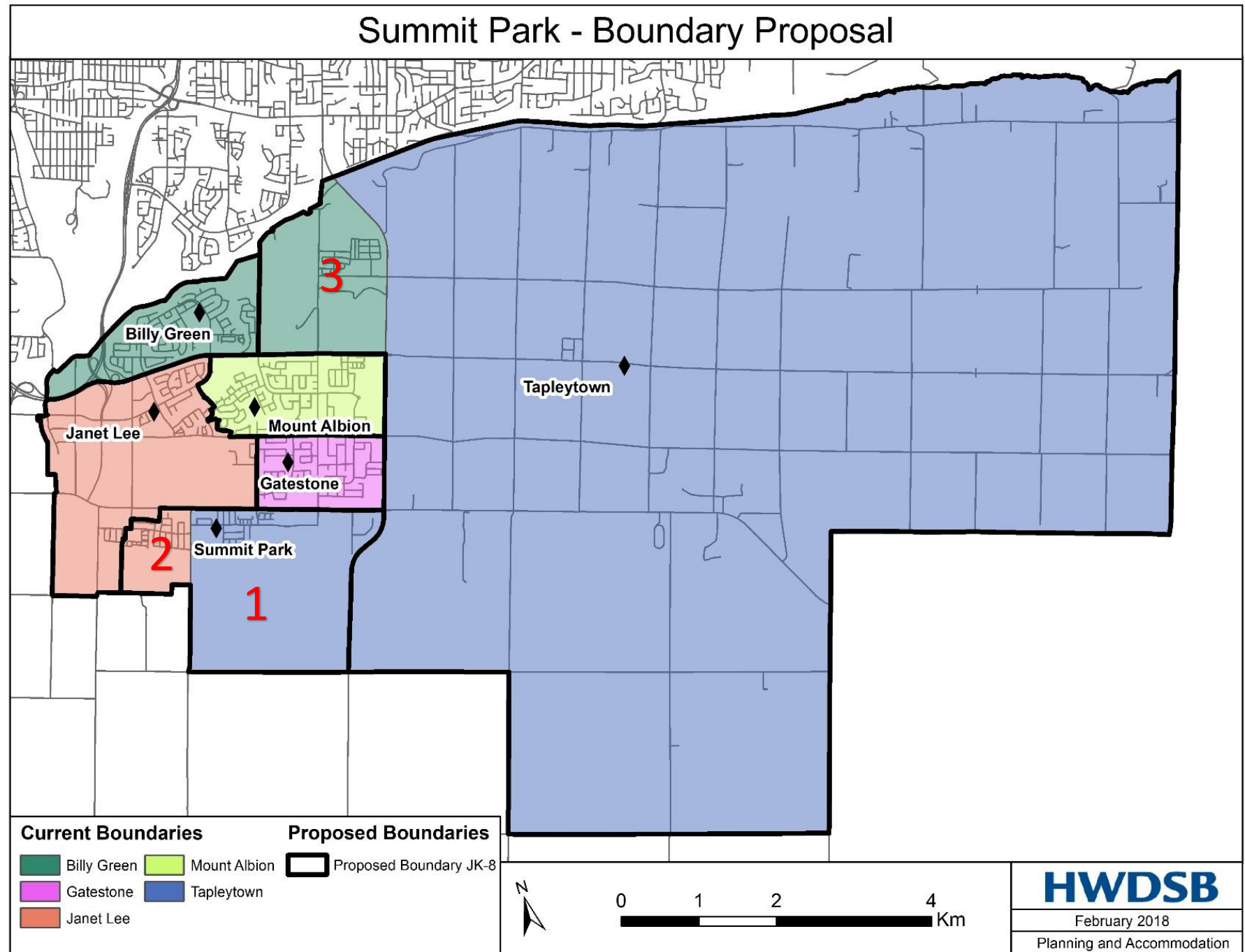


<b>Billy Green</b>	<b>OTG</b>	<b>OTG With Portables</b>	<b>2013</b>	<b>2014</b>	<b>2015</b>	<b>2016</b>	<b>2017</b>	<b>2018</b>
<b>JK-8</b>	372	556	415	433	462	486	482	491
Utilization			112%	116%	124%	131%	130%	132%
Utilization with Portables			75%	78%	83%	87%	87%	88%

<b>Janet Lee</b>	<b>OTG</b>	<b>OTG With Portables</b>	<b>2013</b>	<b>2014</b>	<b>2015</b>	<b>2016</b>	<b>2017</b>	<b>2018</b>
<b>JK-8</b>	378	470	426	415	412	437	432	446
Utilization			113%	110%	109%	116%	114%	118%
Utilization with Portables			91%	88%	88%	93%	92%	95%

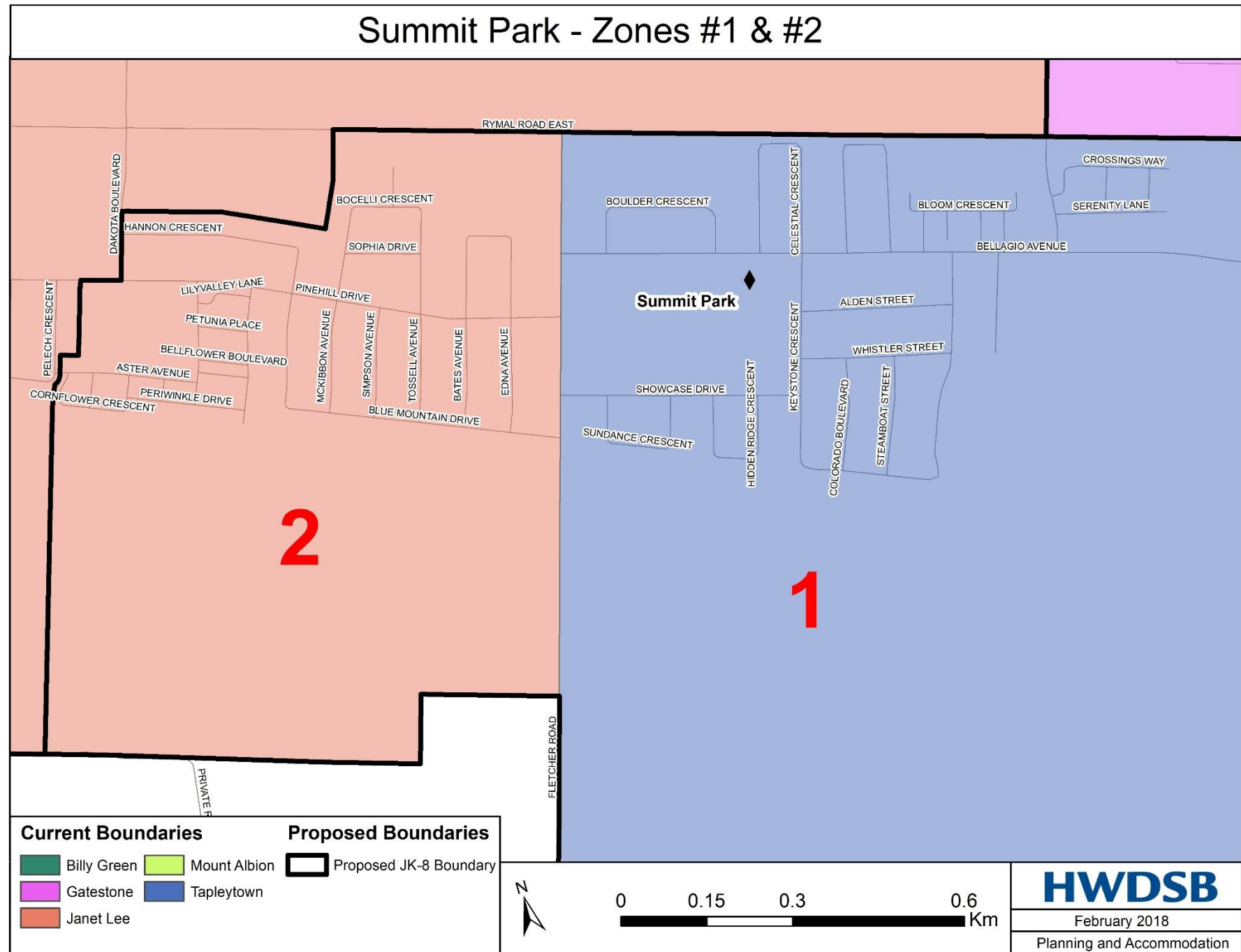
<b>Tapleystown</b>	<b>OTG</b>	<b>OTG With Portables</b>	<b>2013</b>	<b>2014</b>	<b>2015</b>	<b>2016</b>	<b>2017</b>	<b>2018</b>
<b>JK-8</b>	291	383	183	200	249	295	358	396
Utilization			63%	69%	86%	101%	123%	136%
Utilization with Portables			48%	52%	65%	77%	93%	103%

- Tapleytown (Zone 1) attend new school at Summit Park
- Janet Lee (Zone 2) attend new school at Summit Park
- New families moving into (Zone 3) attend Tapleytown. Current families in Zone 3 attending Billy Green, remain at Billy Green (bus transportation provided)



## Zone #1 & #2

- Tapleytown (Zone 1) attend new school at Summit Park
- Janet Lee (Zone 2) attend new school at Summit Park



# Summit Park - Boundary Proposal



Aerial Image Source: SWOOP, 2015

## Proposed Boundaries

 Proposed Boundary JK-8



**HWDSB**

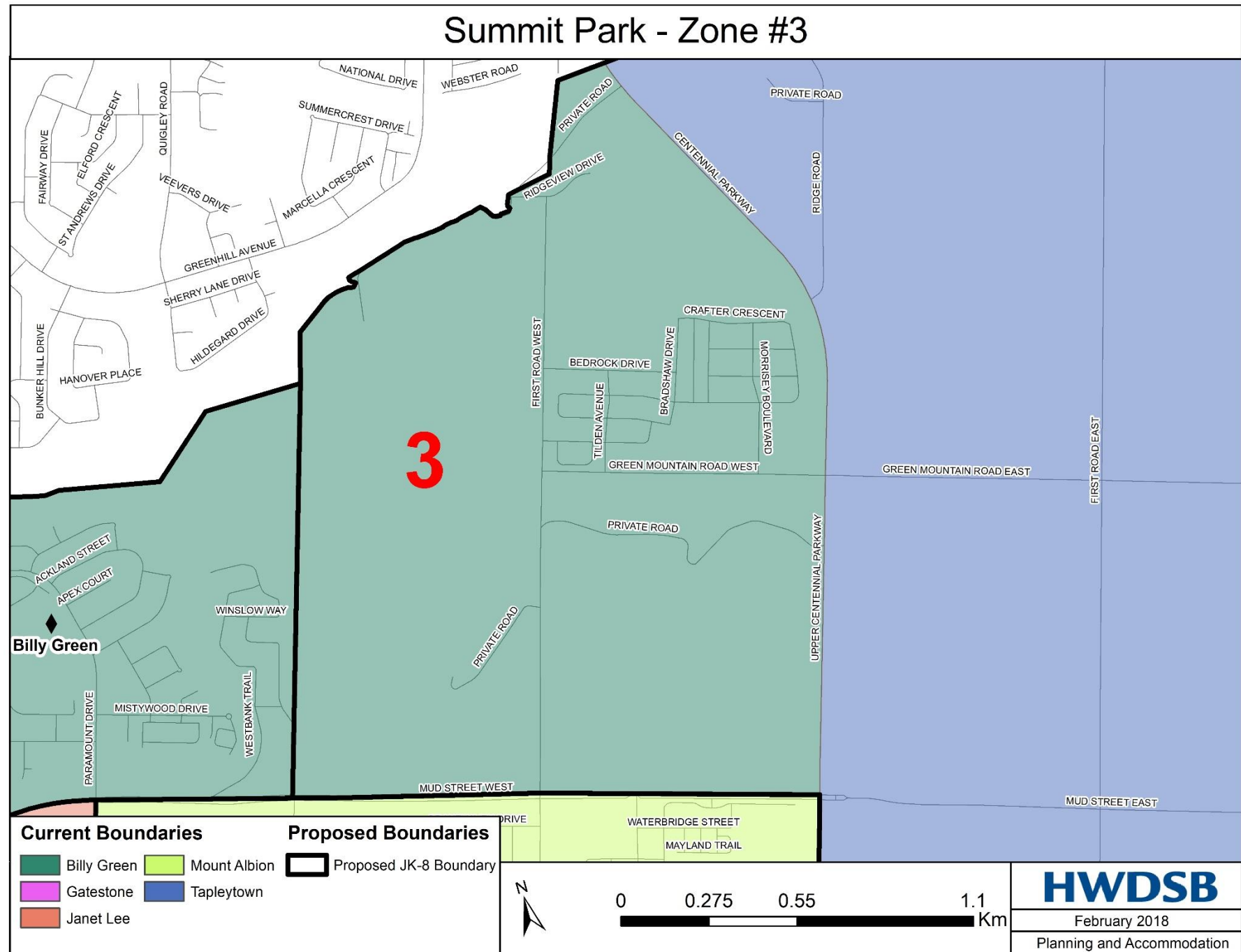
February 2018

Planning and Accommodation

lity

## Zone #3

- New families moving into (Zone 3) attend Tapleytown. Current families in Zone 3 attending Billy Green, remain at Billy Green (bus transportation provided).



## STUDENT LOCATIONS

### 2017 Student Count

#### 1. Tapleystown students to Summit Park

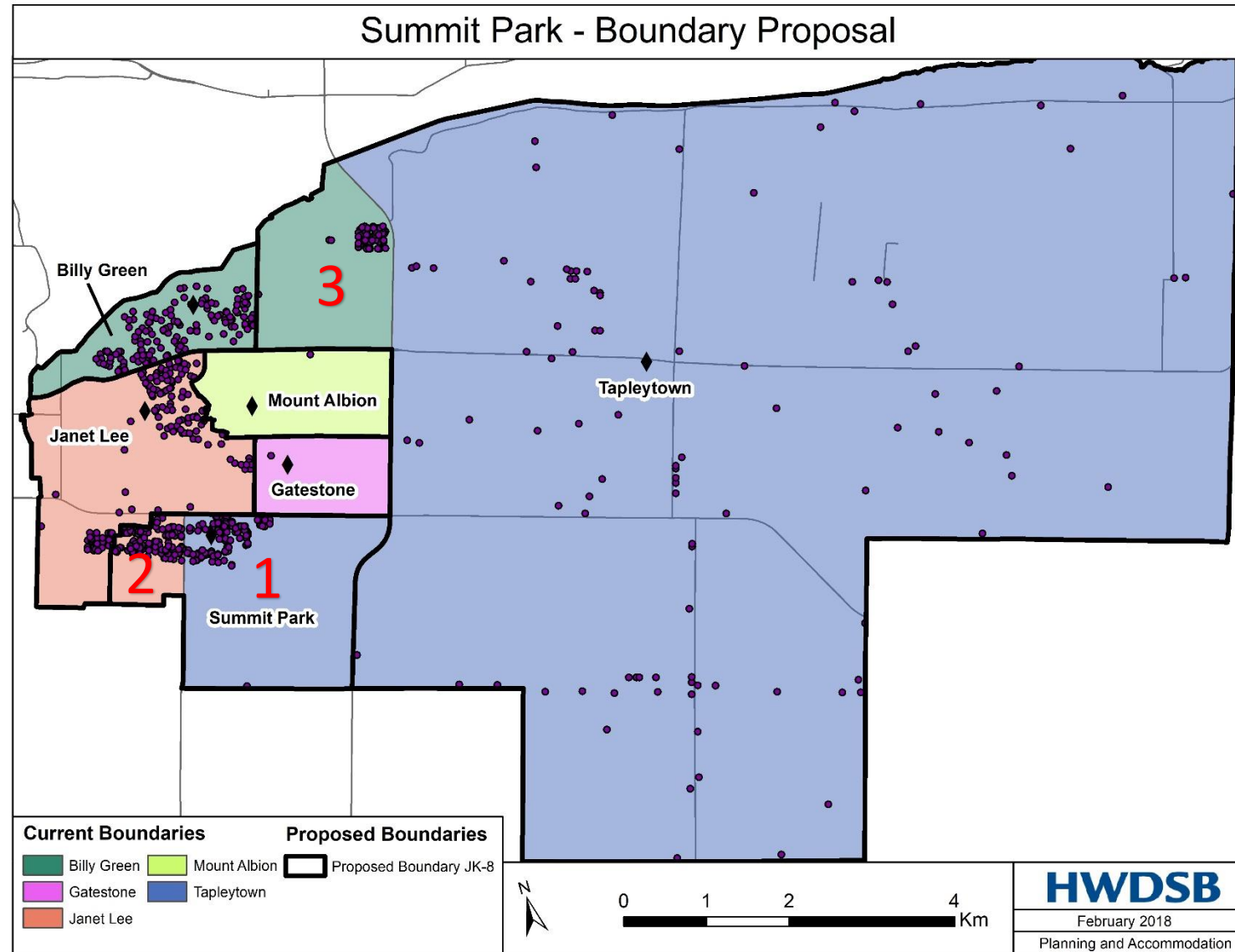
Tapleystown	JK	SK	1	2	3	4	5	6	7	8	Total
2017	21	17	18	19	12	14	17	17	17	9	161

#### 2. Janet Lee Students to Summit Park

Janet Lee	JK	SK	1	2	3	4	5	6	7	8	Total
2017	20	14	21	19	19	14	18	17	19	19	180

#### 3. Billy Green Students

Billy Green	JK	SK	1	2	3	4	5	6	7	8	Total
2017	15	11	6	15	8	12	8	8	10	11	104





# BOUNDARY PROPOSAL - ENROLMENT

Billy Green JK-8	OTG	OTG With Portables	2017	2018	2019	2020	2021	2022	2023
	372	556	482	491	461	447	421	387	365
Utilization			130%	132%	124%	120%	113%	104%	98%
Utilization with Portables			87%	88%	83%	80%	76%	70%	66%

Janet Lee JK-8	OTG	OTG With Portables	2017	2018	2019	2020	2021	2022	2023
	378	470	432	446	277	309	341	385	401
Utilization			114%	118%	73%	82%	90%	102%	106%
Utilization with Portables			92%	95%	59%	66%	73%	82%	85%

Tapleystown JK-8	OTG	OTG With Portables	2017	2018	2019	2020	2021	2022	2023
	291	383	358	396	262	319	385	466	551
Utilization			123%	136%	90%	110%	132%	160%	189%
Utilization with Portables			93%	103%	69%	83%	101%	122%	144%

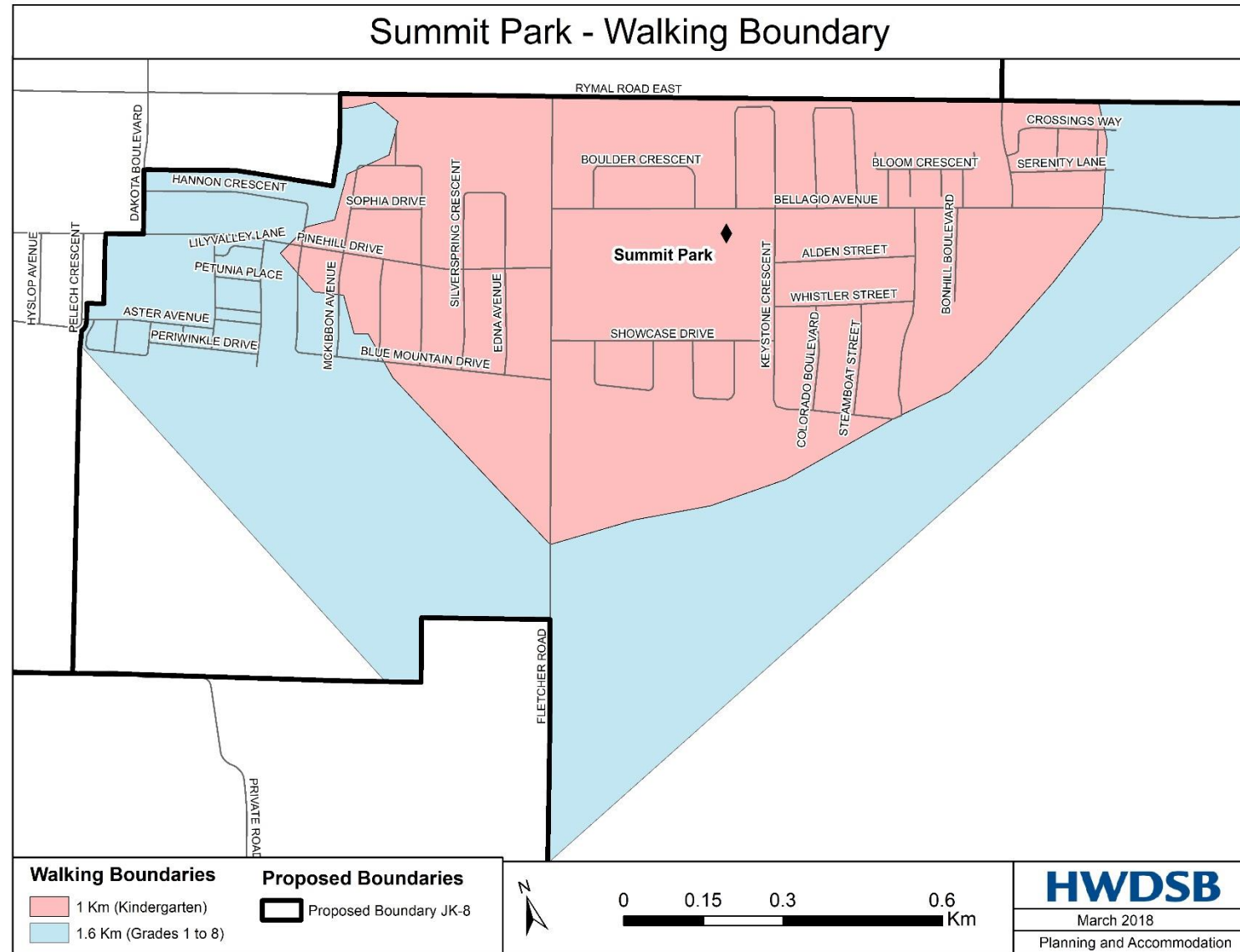
Summit Park JK-8	OTG	OTG With Portables	2017	2018	2019	2020	2021	2022	2023
	625	-	0	0	374	422	467	557	607
Utilization			0%	0%	60%	68%	75%	89%	97%

## TRANSPORTATION

Students are eligible for transportation services in their in-catchment school when walking distances exceeds:

- 1 KM for Kindergarten
- 1.6 KM for grades 1 to 8

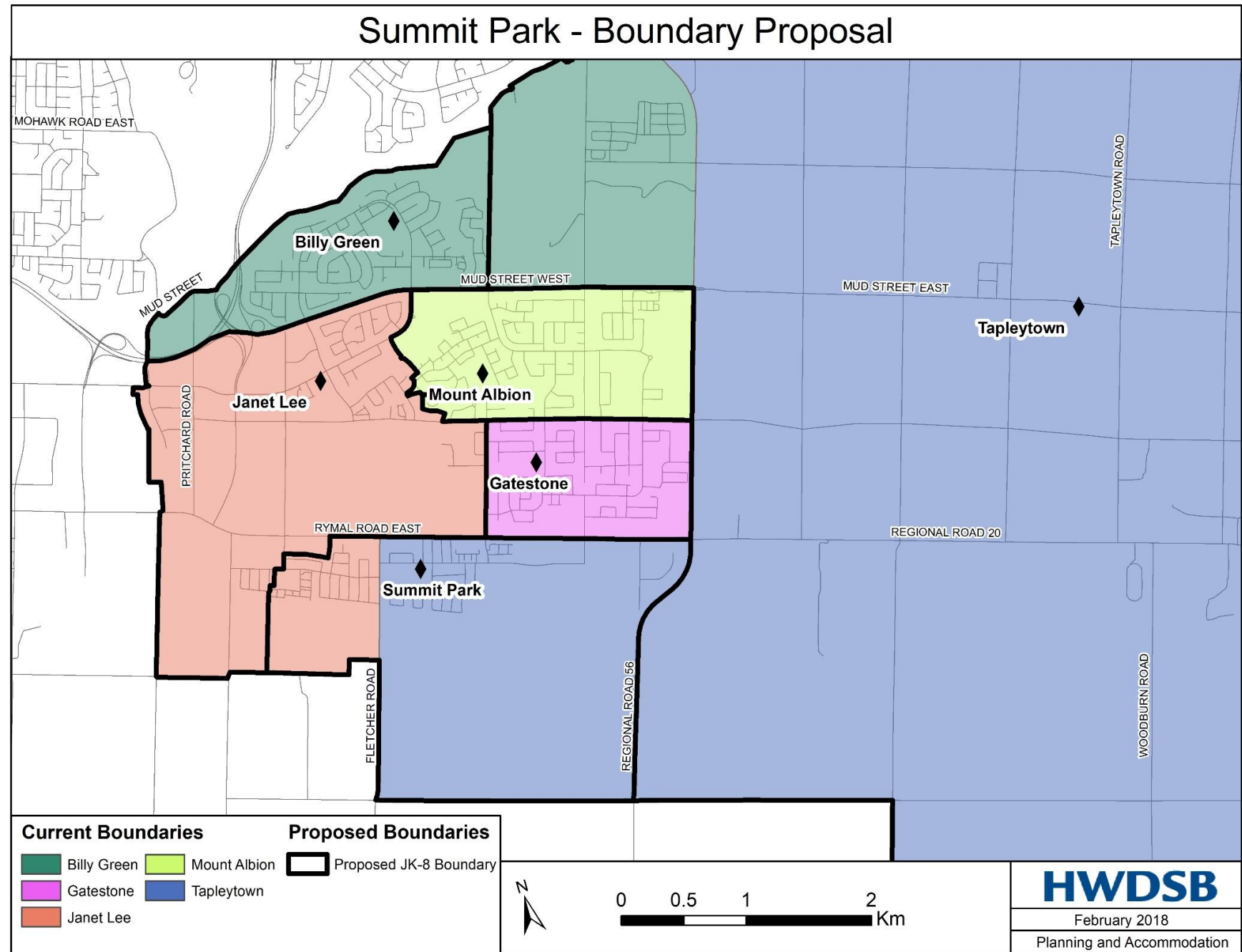
Based on current enrolment and student locations, 17 JK & SKs would qualify for transportation services to Summit Park School





Questions

Seeking Consensus –  
Proposed Boundary



<b>Date</b>	<b>Event</b>	<b>Location</b>
Tuesday April 3, 2018	Community Consultation (Public Meeting)	Billy Green – 6 pm
Thursday April 12, 2018	Advisory Panel Follow-up meeting	Tapleystown – 6 pm

Boundary review will follow HWDSB's Boundary Review [Policy](#) and [Procedure](#).

All information presented will be posted on the Board website:

<http://www.hwdsb.on.ca/about/school-renewal/boundary-reviews/>

**HWDSB**

---

**THANK YOU**

curiosity

creativity

possibility