

Boundary Review Advisory Panel Meeting

Ancaster, Dundas and Flamborough Elem and Sec FI

*Ancaster Senior, Dundana, Fessenden,
Sir William Osler, Sherwood, Westdale*

October 19, 2017

curiosity

creativity

possibility

Welcome and Introductions

curiosity

creativity

possibility

Review the following:

- Role of Advisory Panel
- Boundary Review Timelines
- Boundary History and rationale for change
- Boundary Proposal
- Enrolment & facility utilization impacts
- Implementation
- Transportation impacts
- Community consultation

- Communicate the information to community
- Review boundary proposal
- Provide feedback on the boundary proposal and indicate what additional information staff should present at the public consultation

Date	Event	Location
Thursday October 19, 2017	Advisory Panel Meeting	Sir William Osler
Wednesday November 1, 2017	Community Consultation (Public Meeting)	Ancaster Senior
November 8, 2017	Submit Final Report to Finance and Facilities Committee	Ed Centre
November 20, 2017	Approval - Final Report to Board	Ed Centre

Boundary review will follow HWDSB's Boundary Review [Policy](#) and [Directive](#).

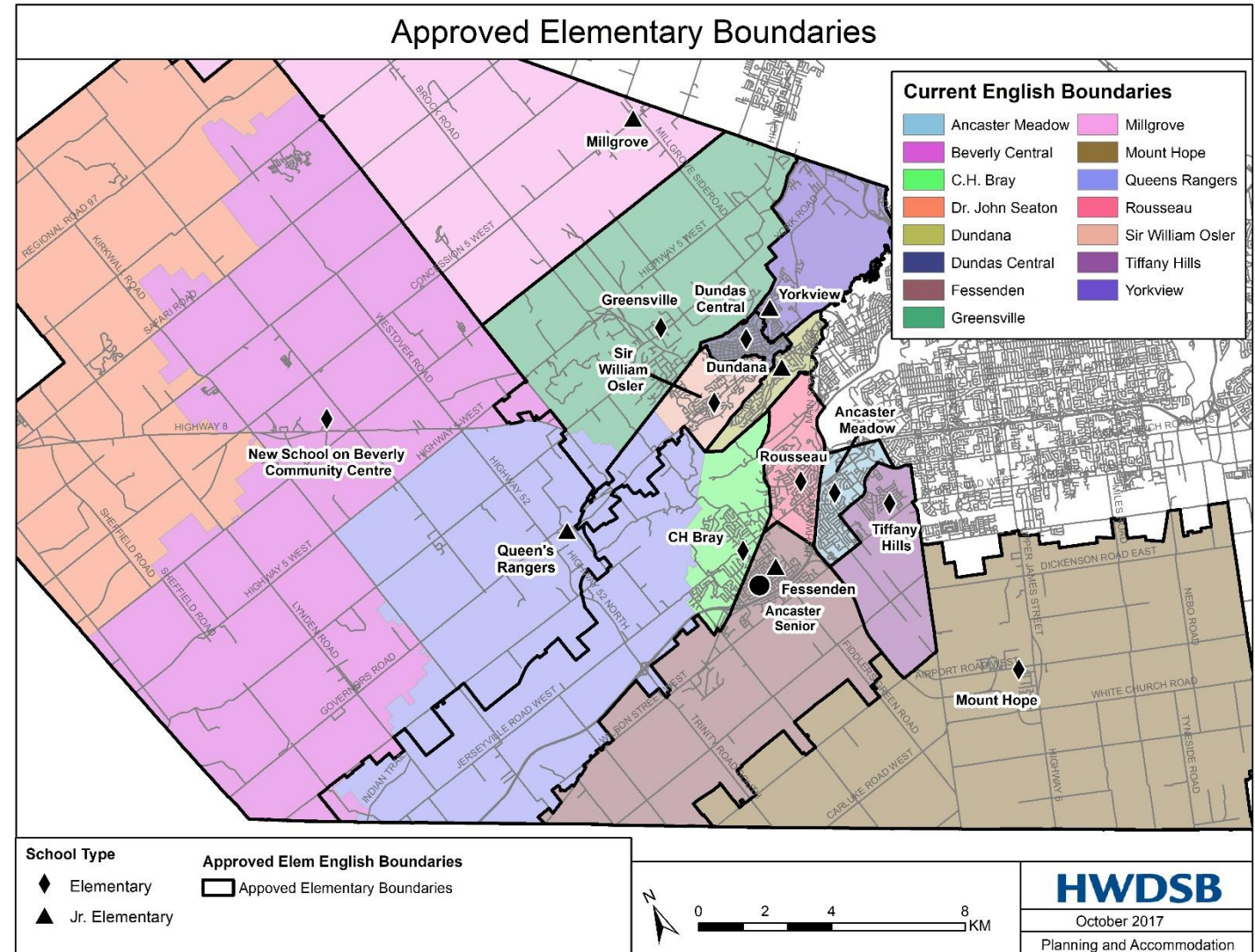
All information presented will be posted on the Board website:

<http://www.hwdsb.on.ca/about/boundary-reviews/>

- Ancaster Accommodation Review completed throughout the 2016/17 school year
- On Monday May 29, 2017 Trustees approved the closure of CH Bray, Fessenden, Queen's Rangers and Rousseau pending Ministry funding for two new schools (New CH Bray and Rousseau) and funding to convert Ancaster Senior to a K-8 school
- The new Rousseau school was approved to open a French Immersion program – that boundary will be determined once funding is secured from the Ministry of Education

Approved Elementary Boundary

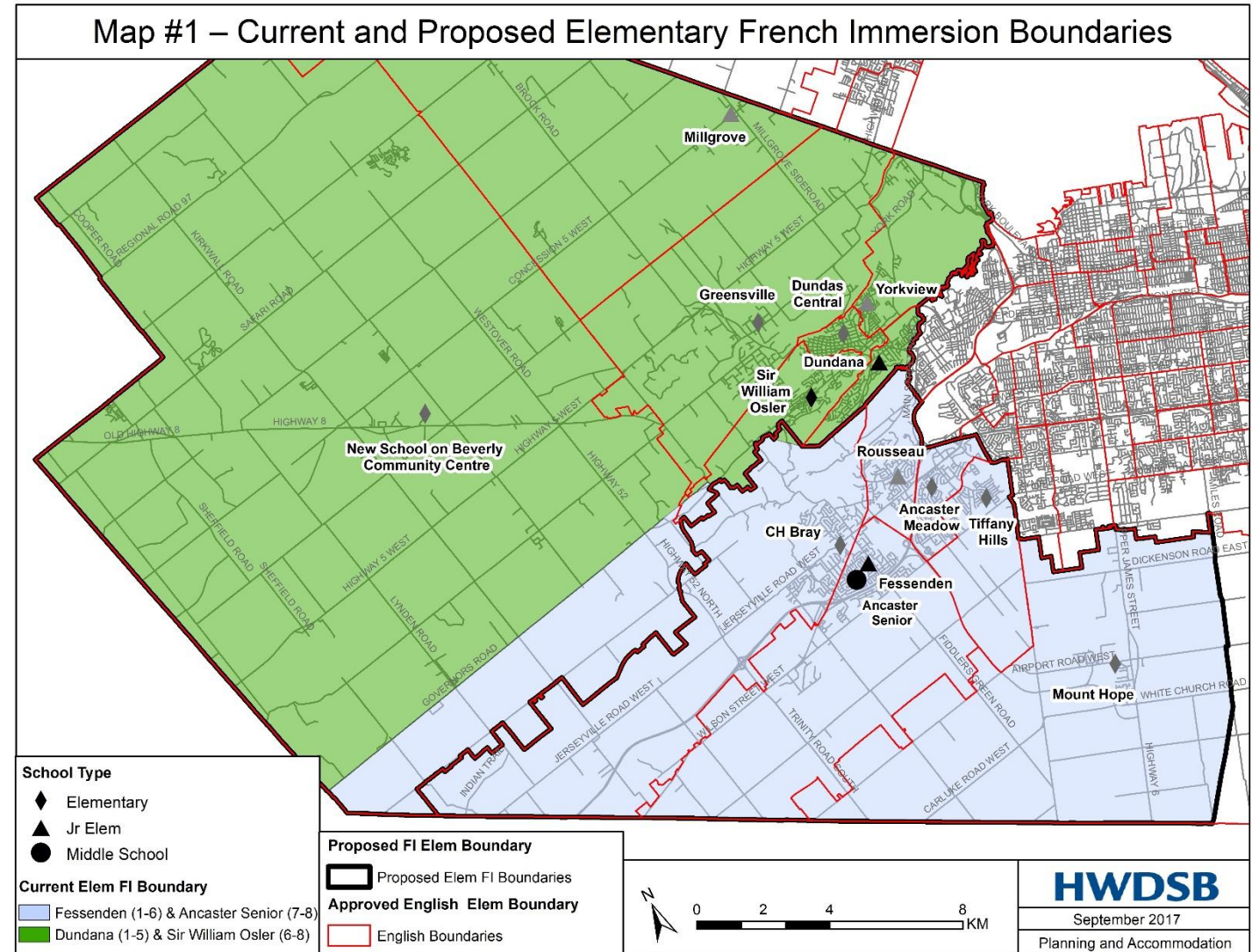
- All Students residing on Power Line Road West and north of Power Line Road West attend New School On Beverly Community Centre Site
- All new students on Power Line Road East will attend the new CH Bray
- Student residing on Middletown Road south of Highway 5 will attend new Greenville
- Students residing on Governors Road up to an including Old Highway 99 and Old Governors Road (Off of Binkley Rd)



- Seek community input on aligning the elementary and secondary French Immersion boundaries with the approved English boundaries for Ancaster, Dundas and Flamborough FI schools
- Create clear path of associated schools for students and families as they progress through FI programming from grades 1 to 12.
- School communities remain together as they transition from their home English school to French Immersion schools.

Elementary Boundary Proposal

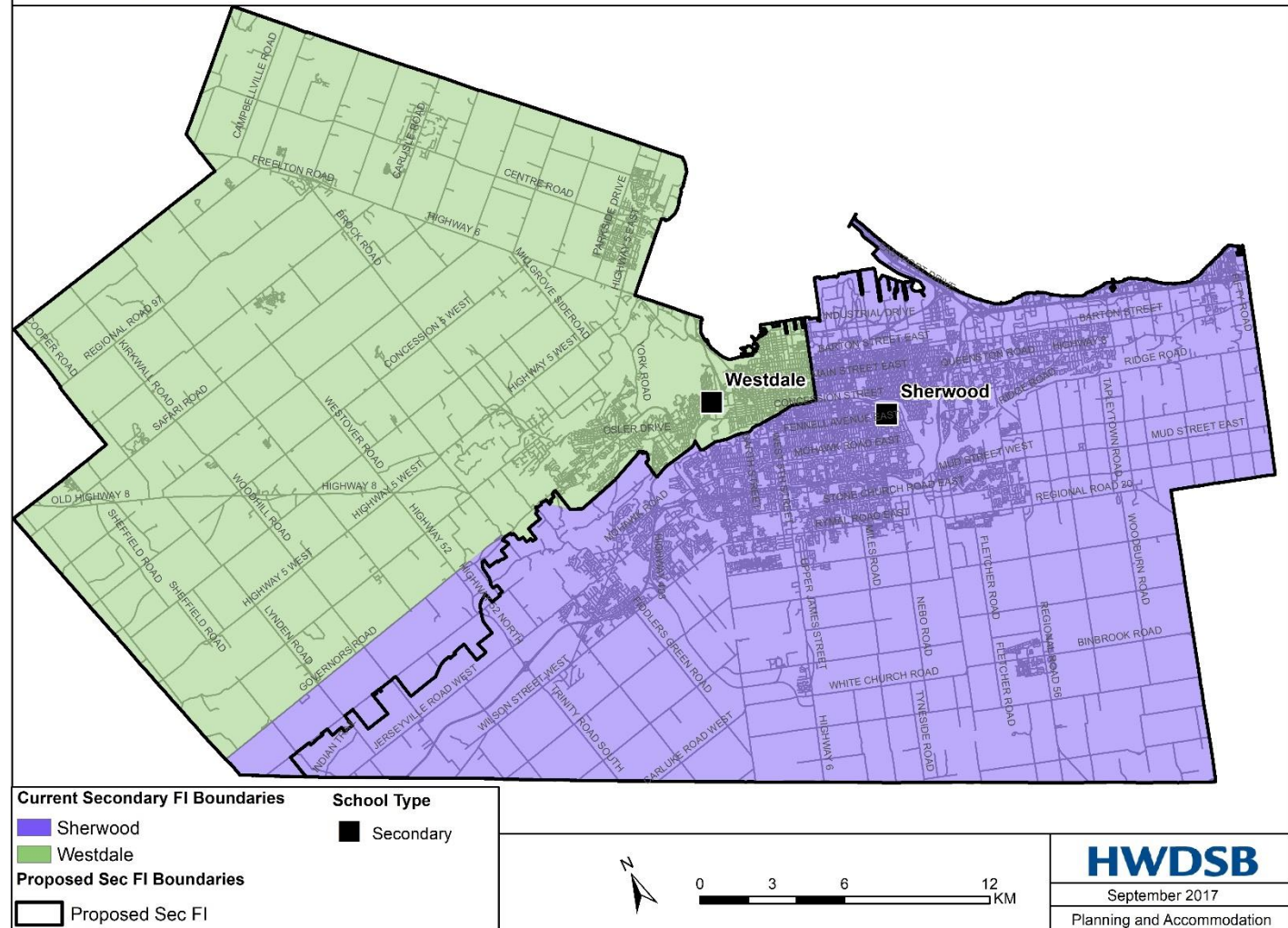
- All new students residing in the approved boundary for the new school on the Beverly Community Centre site attend Dundana (1-5), Sir William Osler (6-8) and Westdale (9-12) for French Immersion
- All new students residing in the new CH Bray boundary will attend Fessenden (1-6), Ancaster Senior (7-8) and Sherwood (9-12)
- Existing student have the option to remain at their existing French Immersion school



Secondary Boundary Proposal

- Westdale and Sherwood would remain the two secondary schools that offer French Immersion

Map #2 – Current and Proposed Secondary French Immersion Boundaries



- Currently, there are 3 secondary students residing in the impacted area.
- 6 Fessenden students residing in the impacted area that would now be eligible to attend Dundana
- 2 Ancaster Senior students residing in impacted area that would now be eligible to attend SWO
- 2 OOC Dundana students residing in the impacted area that would now be eligible to attend Dundana
- 1 OOC SWO student residing in impacted area that would now be eligible to attend SWO

- Boundaries will come into effect in 2018/2019 school year
- All existing students in these impacted areas will be allowed to remain at their current elementary school
- If an existing student chooses to stay at their current elementary French Immersion school, younger siblings will not be able to attend because all French Immersion schools are closed to out of catchment
- Once a student completes FI programming at their existing school it is expected that the student would move to their FI home school based on the new boundaries

- Boundaries will be implemented in 2018/2019 school year
- All existing students in these impacted areas will be allowed to remain at their current secondary school
- If an existing student chooses to stay at their current secondary French Immersion school, younger siblings will not be able to attend because all French Immersion schools are closed to out of catchment

- Transportation will be available to eligible students as per HWDSB Transportation Policy
- Students who remain at their existing French Immersion elementary and secondary school in French Immersion will continue to receive transportation until completion at that school

- Gather feedback on:
 - Boundary change and implementation
- Answer any questions from stakeholders related to the proposed boundary change
- November 1, 2017 at Ancaster Senior– 6:00 pm

Date	Event	Location
Wednesday November 1, 2017	Community Consultation (Public Meeting)	Ancaster Senior
November 8, 2017	Submit Final Report to Finance and Facilities Committee	Ed Centre
November 20, 2017	Approval - Final Report to Board	Ed Centre

All information presented will be posted on the Board website:
<http://www.hwdsb.on.ca/about/boundary-reviews/>

Questions for clarification: boundaryreview@hwdsb.on.ca