

Boundary Review Community Consultation

Ancaster, Dundas and Flamborough Elem and Sec FI

*Ancaster Senior, Dundana, Fessenden,
Sir William Osler, Sherwood, Westdale*

November 1, 2017

curiosity

creativity

possibility

Welcome and Introductions

curiosity

creativity

possibility

Review the following:

- Boundary Review Timelines
- Boundary History and rationale for change
- Boundary Proposal
- Enrolment & facility utilization impacts
- Implementation
- Transportation impacts
- Question and Answer

Date	Event	Location
Thursday October 19, 2017	Advisory Panel Meeting	Sir William Osler
Wednesday November 1, 2017	Community Consultation (Public Meeting)	Ancaster Senior
November 8, 2017	Submit Final Report to Finance and Facilities Committee	Ed Centre
November 20, 2017	Approval - Final Report to Board	Ed Centre

Boundary review will follow HWDSB's Boundary Review [Policy](#) and [Directive](#).

All information presented will be posted on the Board website:

<http://www.hwdsb.on.ca/about/boundary-reviews/>

- Thursday October 19 – Sir William Osler
- Discussed the boundary proposal
- Staff responded to a variety of questions, concerns and suggestions from the advisory panel
- Staff will address and review the advisory panel's questions & concerns later in the presentation

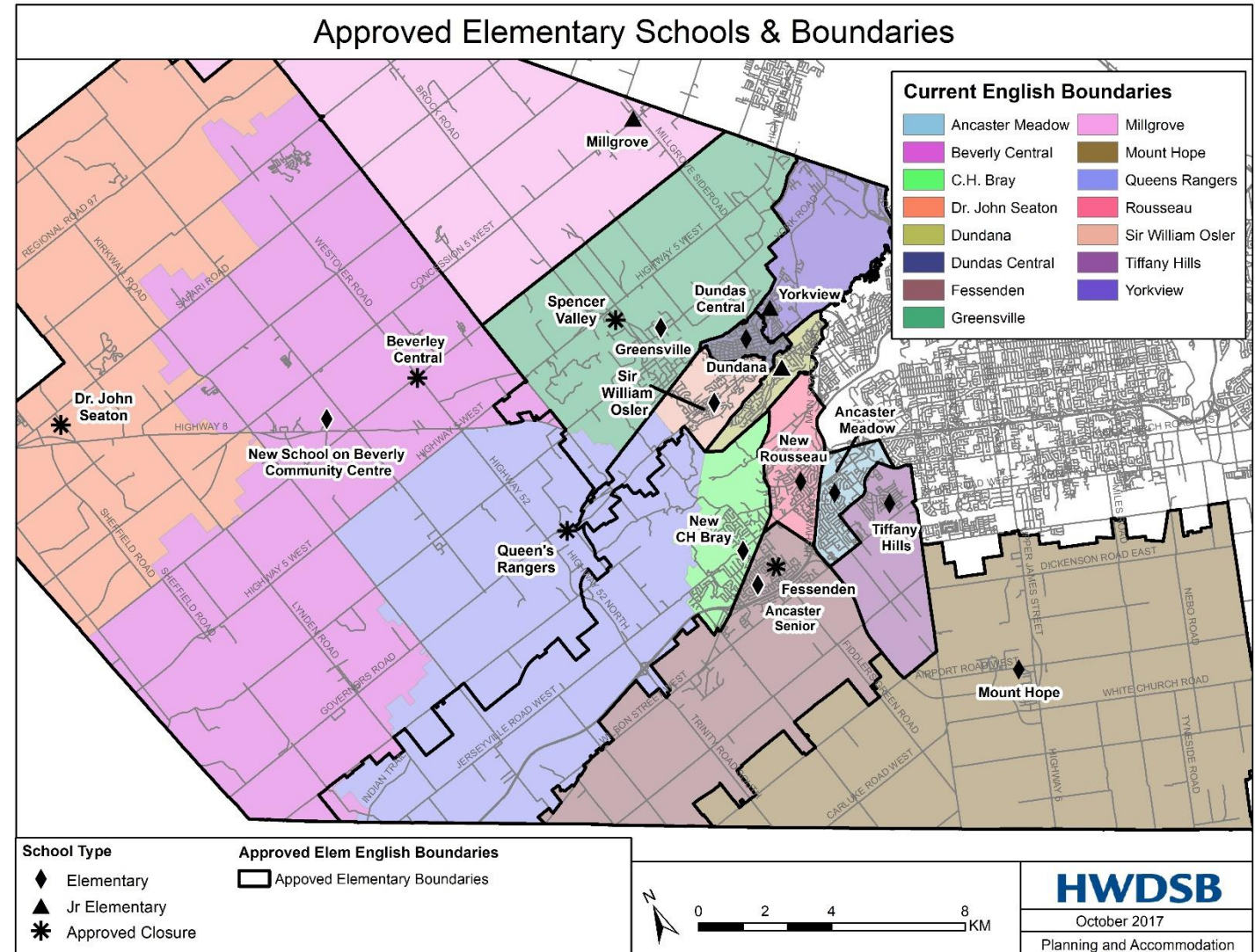
All information presented at the Advisory Panel meeting:

<http://www.hwdsb.on.ca/about/boundary-reviews/>

- Ancaster Accommodation Review completed throughout the 2016/17 school year
- On Monday May 29, 2017 Trustees approved the closure of CH Bray, Fessenden, Queen's Rangers and Rousseau pending Ministry funding for two new schools (New CH Bray and Rousseau) and funding to convert Ancaster Senior to a K-8 school
- The new Rousseau school was approved to open a French Immersion program – that boundary will be determined once funding is secured from the Ministry of Education

Approved Elementary Boundary

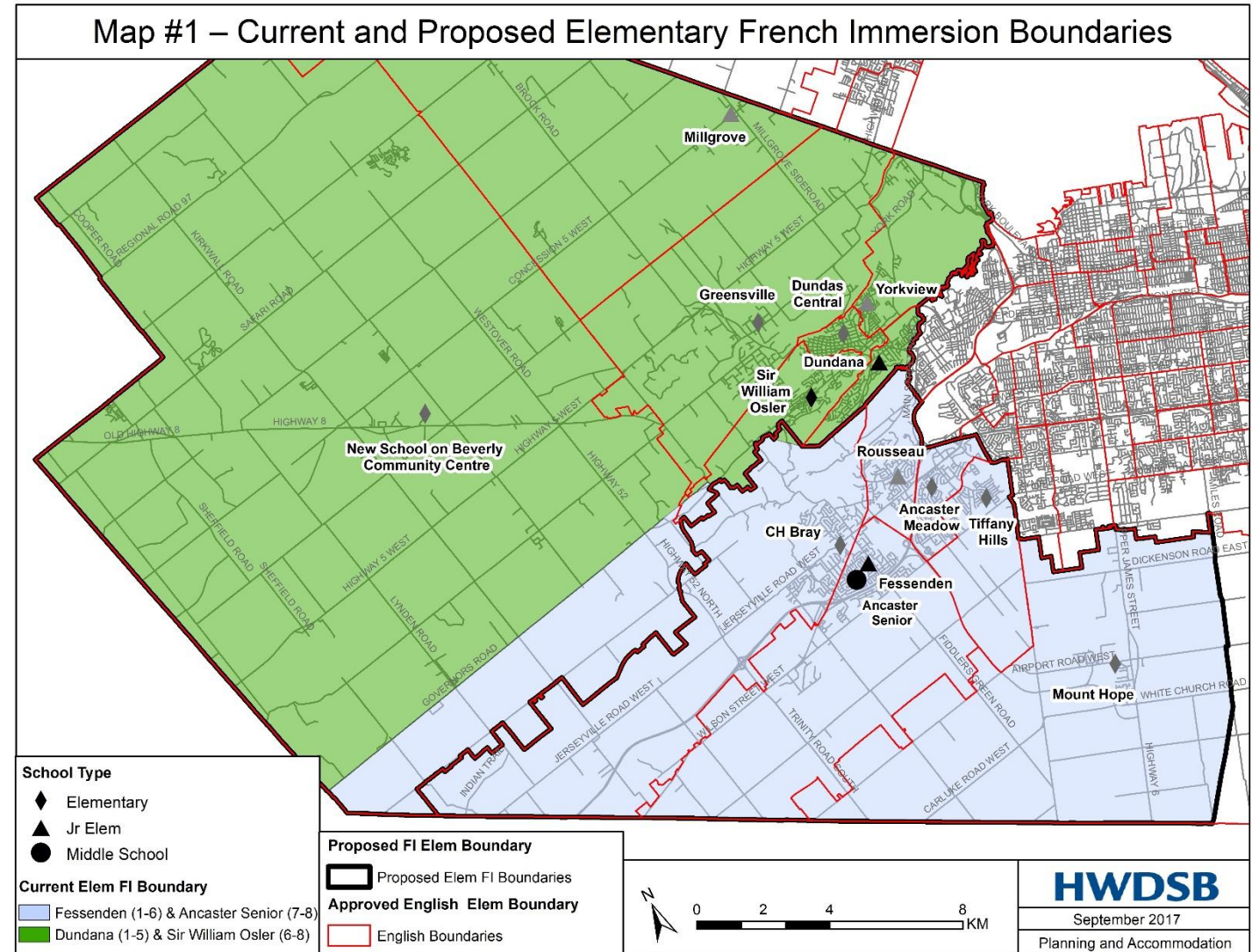
- All Students residing on Power Line Road West and north of Power Line Road West attend New School On Beverly Community Centre Site
- All new students on Power Line Road East will attend the new CH Bray
- Student residing on Middletown Road south of Highway 5 will attend new Greenville
- Students residing on Governors Road up to an including Old Highway 99 and Old Governors Road (Off of Binkley Rd) attend Sir William Osler



- Seek community input on aligning the elementary and secondary French Immersion boundaries with the approved English boundaries for Ancaster, Dundas and Flamborough FI schools
- Create clear path of associated schools for students and families as they progress through FI programming from grades 1 to 12.
- School communities remain together as they transition from their home English school to French Immersion schools.

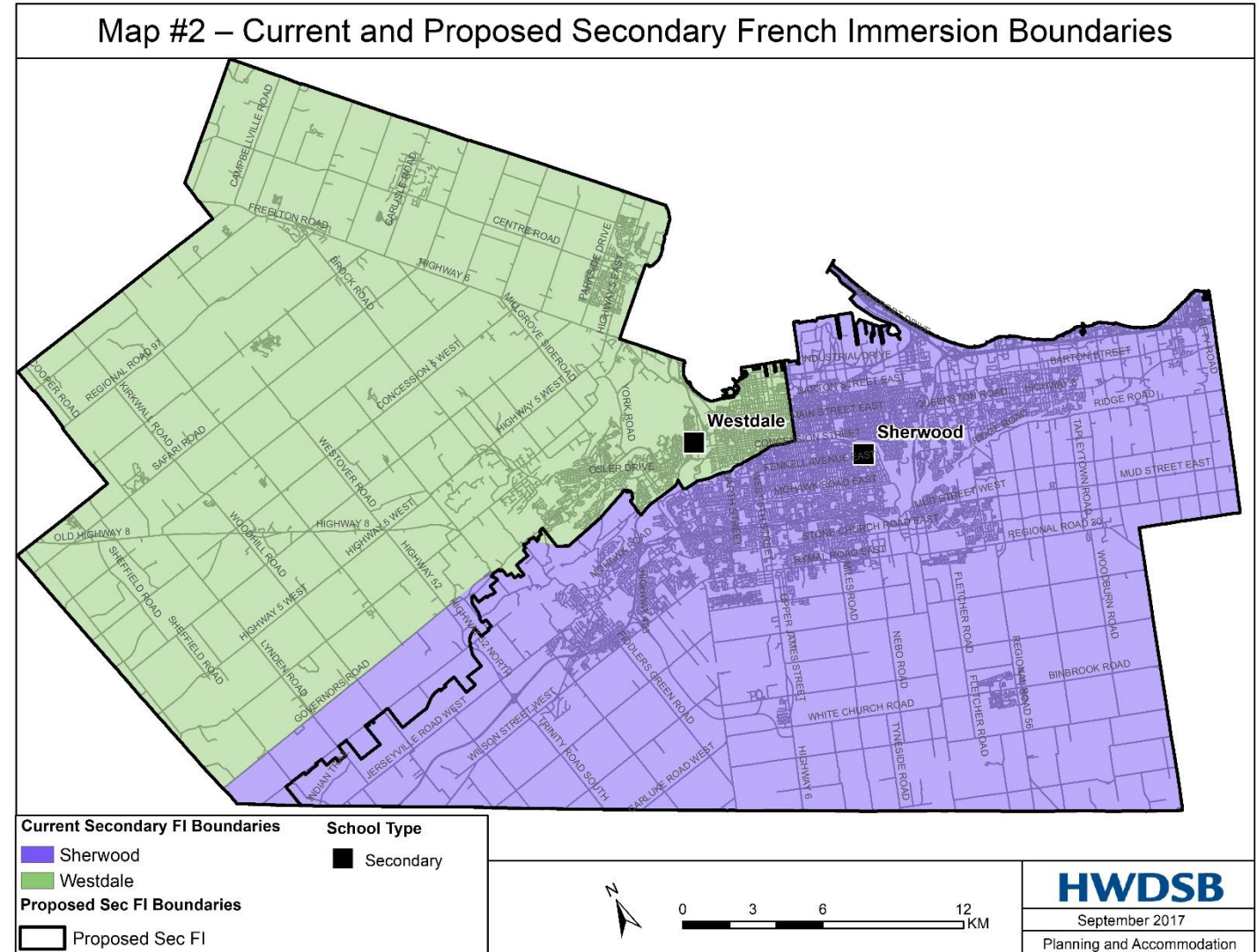
Elementary Boundary Proposal

- All new students residing in the approved boundary for the new school on the Beverly Community Centre site attend Dundana (1-5), Sir William Osler (6-8) and Westdale (9-12) for French Immersion
- All new students residing in the new CH Bray boundary will attend Fessenden (1-6), Ancaster Senior (7-8) and Sherwood (9-12)
- Existing student have the option to remain at their existing French Immersion school



Secondary Boundary Proposal

- Westdale and Sherwood would remain the two secondary schools that offer French Immersion
- Currently, Westdale accommodates grades 9 to 12 while Sherwood accommodated grades 9 to 11
- In September 2018 Sherwood will provide grades 9 to 12



- Currently, there are 3 secondary students residing in the impacted area.
- 6 Fessenden students residing in the impacted area that would now be eligible to attend Dundana
- 2 Ancaster Senior students residing in impacted area that would now be eligible to attend SWO
- 2 OOC Dundana students residing in the impacted area that would now be eligible to attend Dundana
- 1 OOC SWO student residing in impacted area that would now be eligible to attend SWO

- Boundaries will come into effect in 2018/2019 school year
- All existing students in these impacted areas will be allowed to remain at their current elementary school
- If an existing student chooses to stay at their current elementary French Immersion school, younger siblings will not be able to attend because all French Immersion schools are closed to out of catchment
- Once a student completes FI programming at their existing school it is expected that the student would move to their FI home school based on the new boundaries

- Boundaries will be implemented in 2018/2019 school year
- All existing students in these impacted areas will be allowed to remain at their current secondary school
- If an existing student chooses to stay at their current secondary French Immersion school, younger siblings will not be able to attend because all French Immersion schools are closed to out of catchment

- Transportation will be available to eligible students as per HWDSB Transportation Policy
- Students who remain at their existing French Immersion elementary and secondary school in French Immersion will continue to receive transportation until completion at that school

- Reach out to families residing in proposed areas of change - Complete
- Consider grandparenting siblings
- Consider allowing current students to continue from Jr. elementary school to middle school to secondary school based on current boundary
- Why not a 2019/2020 implementation?

- Questions or comments for staff regarding the proposed boundary changes

Date	Event	Location
November 8, 2017	Submit Final Report to Finance and Facilities Committee	Ed Centre
November 20, 2017	Approval - Final Report to Board	Ed Centre

All information presented will be posted on the Board website:

<http://www.hwdsb.on.ca/about/boundary-reviews/>

Questions for clarification: boundaryreview@hwdsb.on.ca

Report will be online on Monday November 6, 2017

Public can contact Trustees through Board website prior to November 20th Board Meeting:

<http://www.hwdsb.on.ca/trustees/>