




Ancaster Meadow Boundary Review

Boundary Review Public Meeting

January 7, 2015

Tonight's Presentation

- The Rationale for the proposed boundary changes
 - Current school boundary
 - Enrolment Projections
 - Feedback for the Boundary Review Advisory Panel
 - Next Steps
- 



Rationale

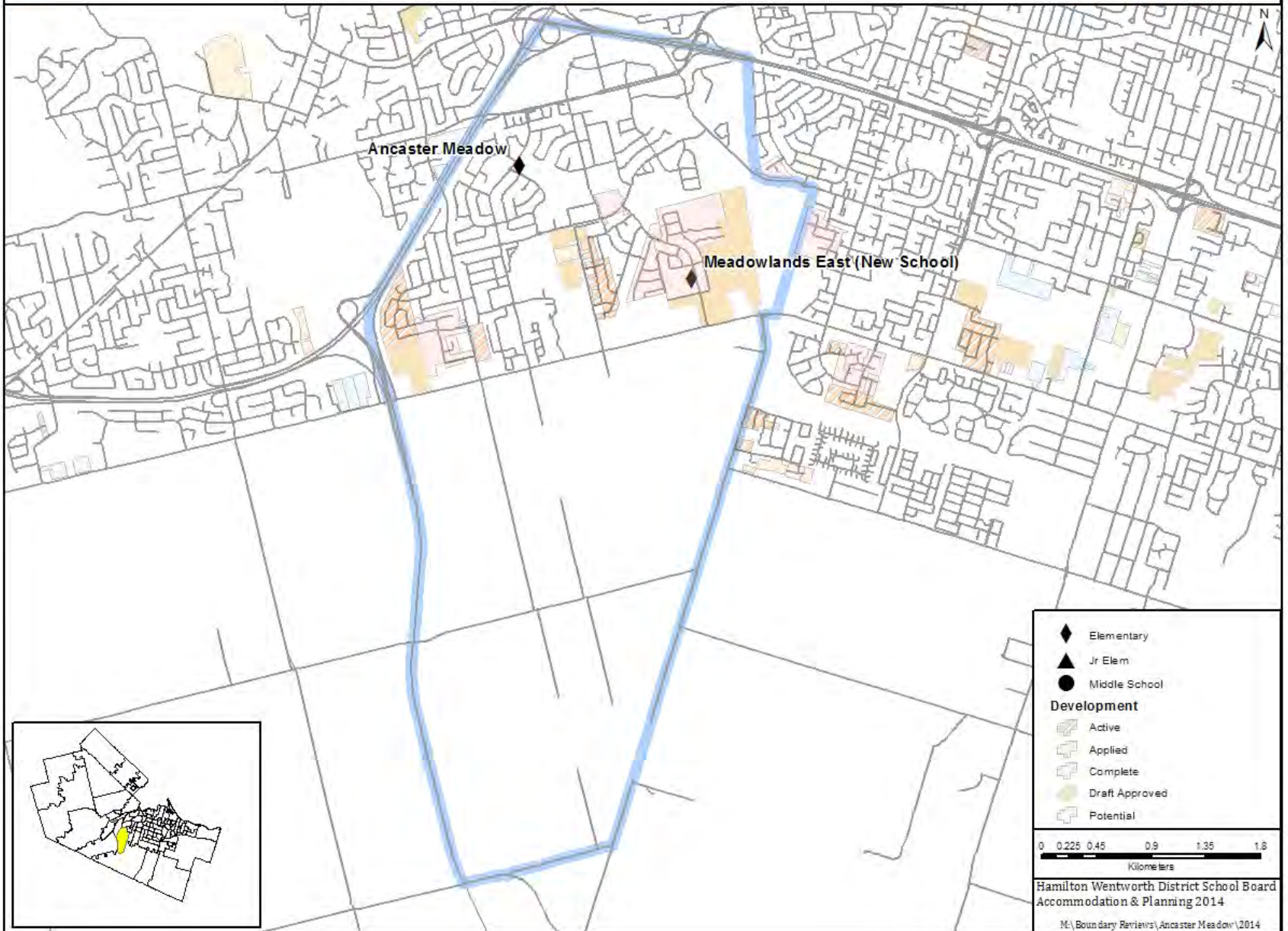
- New school being built in the Tiffany Hills area to accommodate enrolment growth within the current Ancaster Meadow ES attendance boundary (MAP)
 - Opening date: September 2016
- Balancing enrolment between the schools

Current Ancaster Meadow Attendance Boundary



Ancaster Meadow ES Attendance Boundary

Accommodation & Planning



- ◆ Elementary
- ▲ Jr Elem
- Middle School

Development

- Active
- Applied
- Complete
- Draft Approved
- Potential

0 0.225 0.45 0.9 1.35 1.8
Kilometers

Hamilton Wentworth District School Board
Accommodation & Planning 2014
M:\Boundary Reviews\Ancaster Meadow\2014

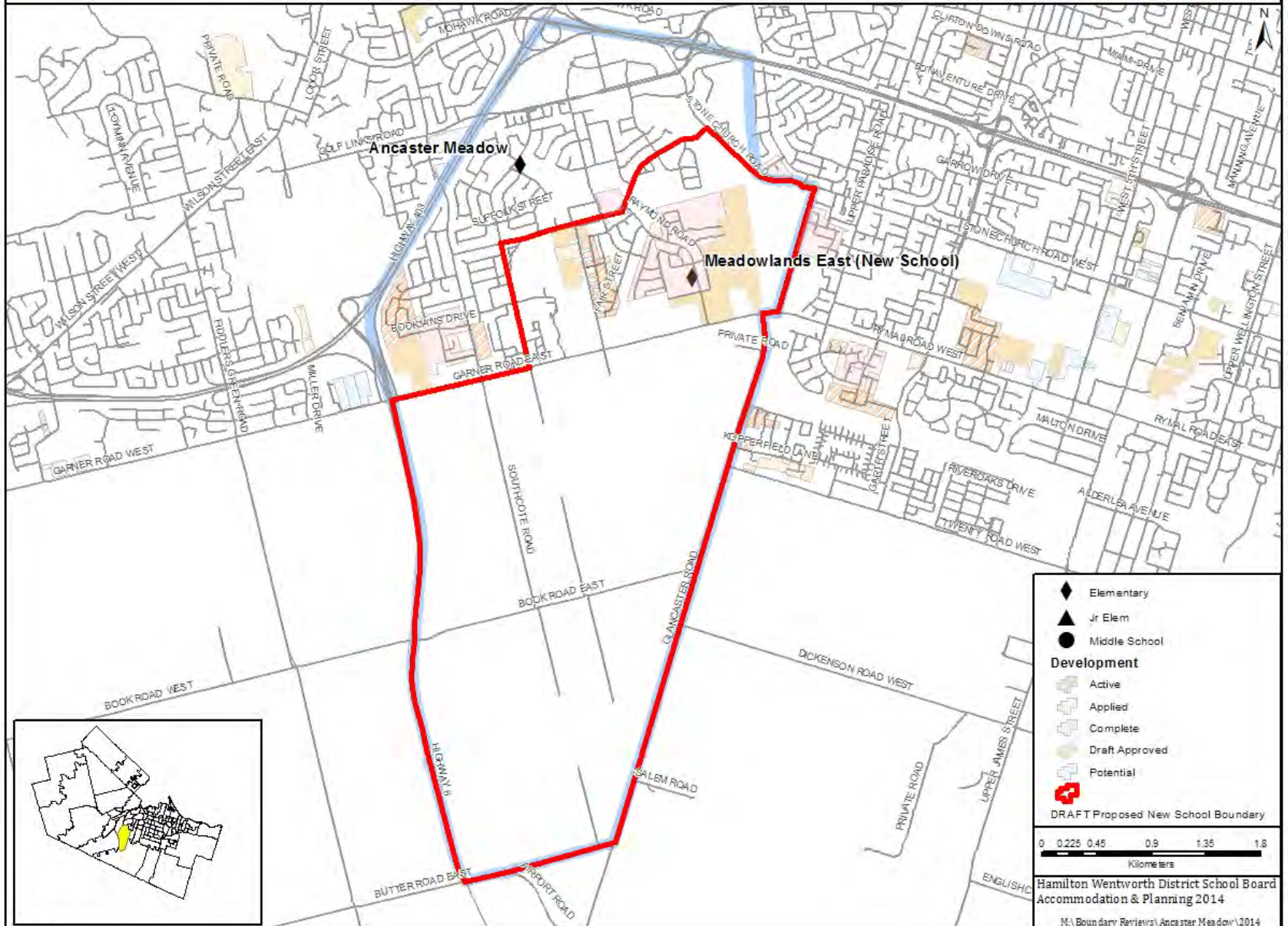
The Enrolment Perspective

DRAFT Proposed School Boundaries



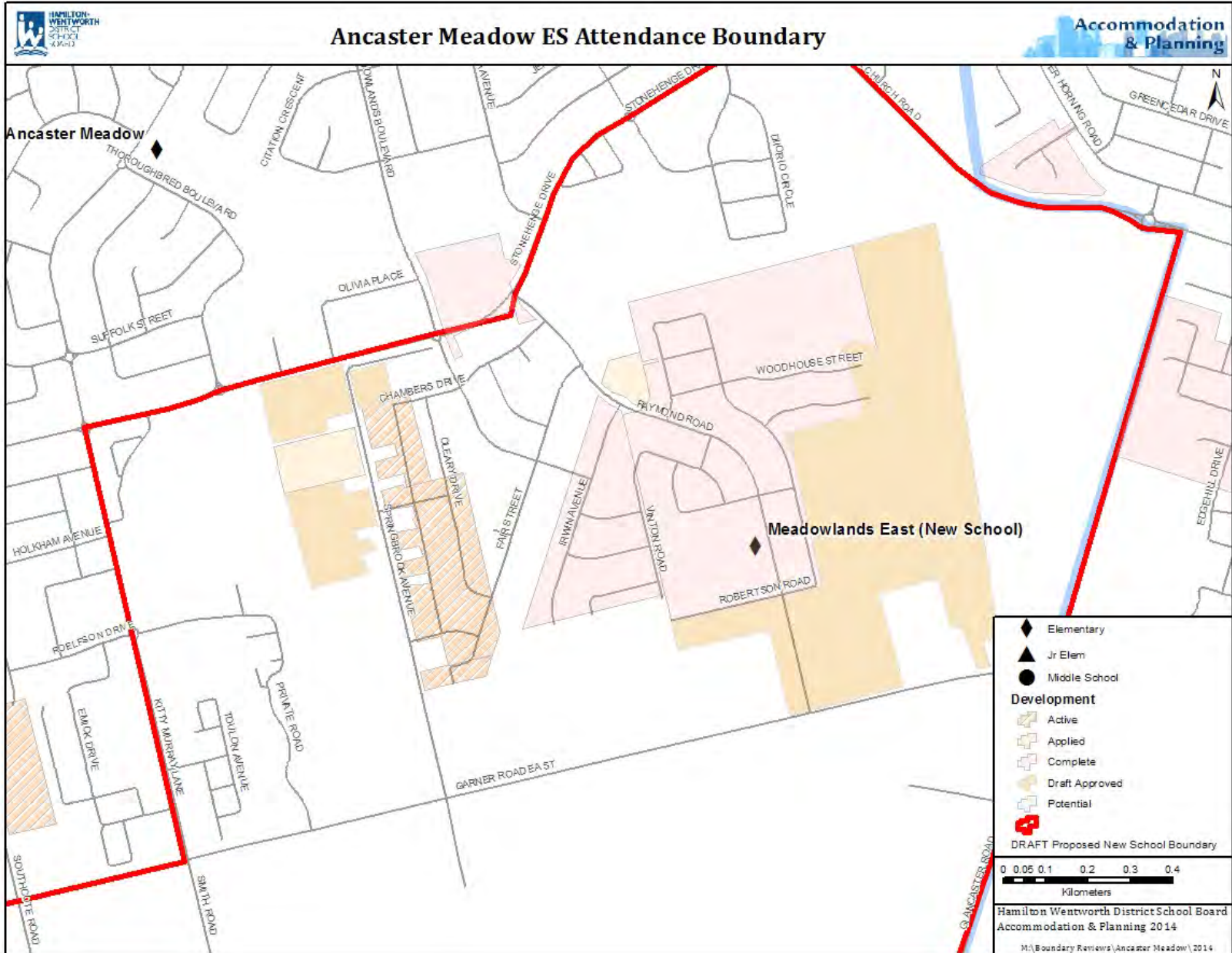
Ancaster Meadow ES & Draft Proposed New School Attendance Boundary

Accommodation & Planning



◆	Elementary
▲	Jr Elem
●	Middle School
Development	
	Active
	Applied
	Complete
	Draft Approved
	Potential
	DRAFT Proposed New School Boundary
0 0.225 0.45 0.9 1.35 1.8 Kilometers	
Hamilton Wentworth District School Board Accommodation & Planning 2014	
M:\Boundary Reviews\Ancaster Meadow\2014	

Close-up DRAFT Proposed School Boundaries



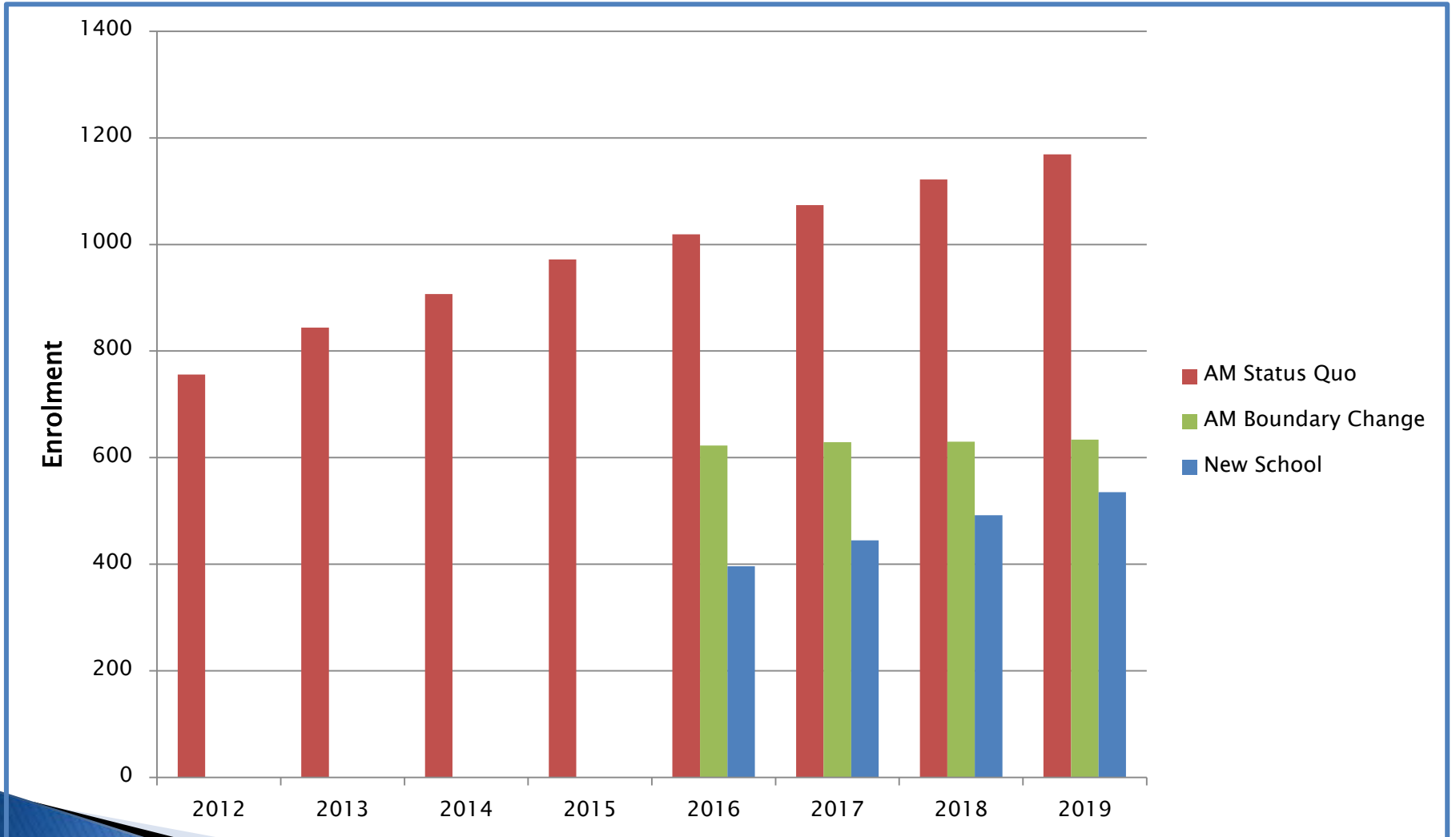
Status Quo Vs. DRAFT Grant Proposal Boundary Change Enrolments

Ancaster Meadow Boundary Review


Enrolment Projections - Status Quo Vs. DRAFT Proposed Boundary Changes

School	School Capacity	Portables	Portable Capacity	2012	2013	2014	2014 Utilization	2014 Utilization + Portables	2015	2016	2017	2018	2019	2019 Utilization
<u>Status Quo Enrolments:</u>														
Ancaster Meadow	584	12	276	756	844	907	155%	105%	972	1019	1074	1122	1169	200%
Totals:	584			756	844	907			972	1019	1074	1122	1169	
<u>Grant Proposal</u>														
<u>Proposed Boundary Change Projection:</u>														
Ancaster Meadow	584			756	844	907	155%		972	623	629	630	634	109%
New School	450						0%			396	445	492	535	119%
Totals:	1034			756	844	907			972	1019	1074	1122	1169	


Enrolment Chart



Up for Discussion – what are our options?

1. Status Quo – not an option
 2. The attendance boundary for the Ancaster Meadow and new school
 - Enrolments/students identified and captured within geographic areas
 - The Ministry rated capacity of Ancaster Meadow (584) and the new school (450)
- 

Next Steps...

- Gather feedback from communities
 - Comment Sheets
 - Prepare report to Board for approval
 - Upon approval, determine the scope of an implementation strategy
- 



Ancaster Meadow Boundary Review

Boundary Review Public Meeting

January 7, 2015