

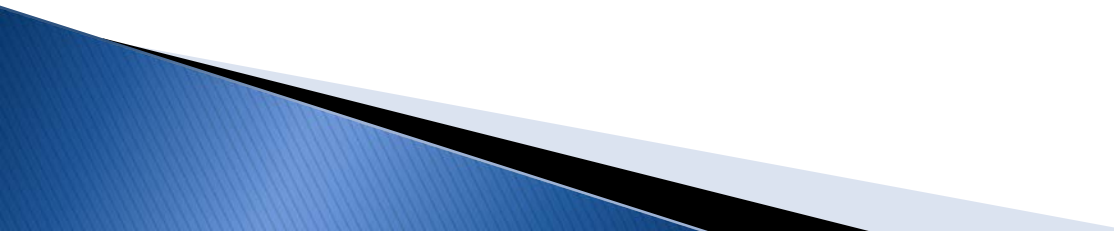


# Ancaster Meadow Boundary Review

DRAFT Presentation – *Boundary Review Public Meeting*

December 3, 2014

# Tonight's Presentation

- The Rationale for the proposed boundary changes
  - Current school boundary
  - Enrolment Projections
  - Feedback from the Boundary Review Advisory Panel
  - Next Steps
- 



# Rationale

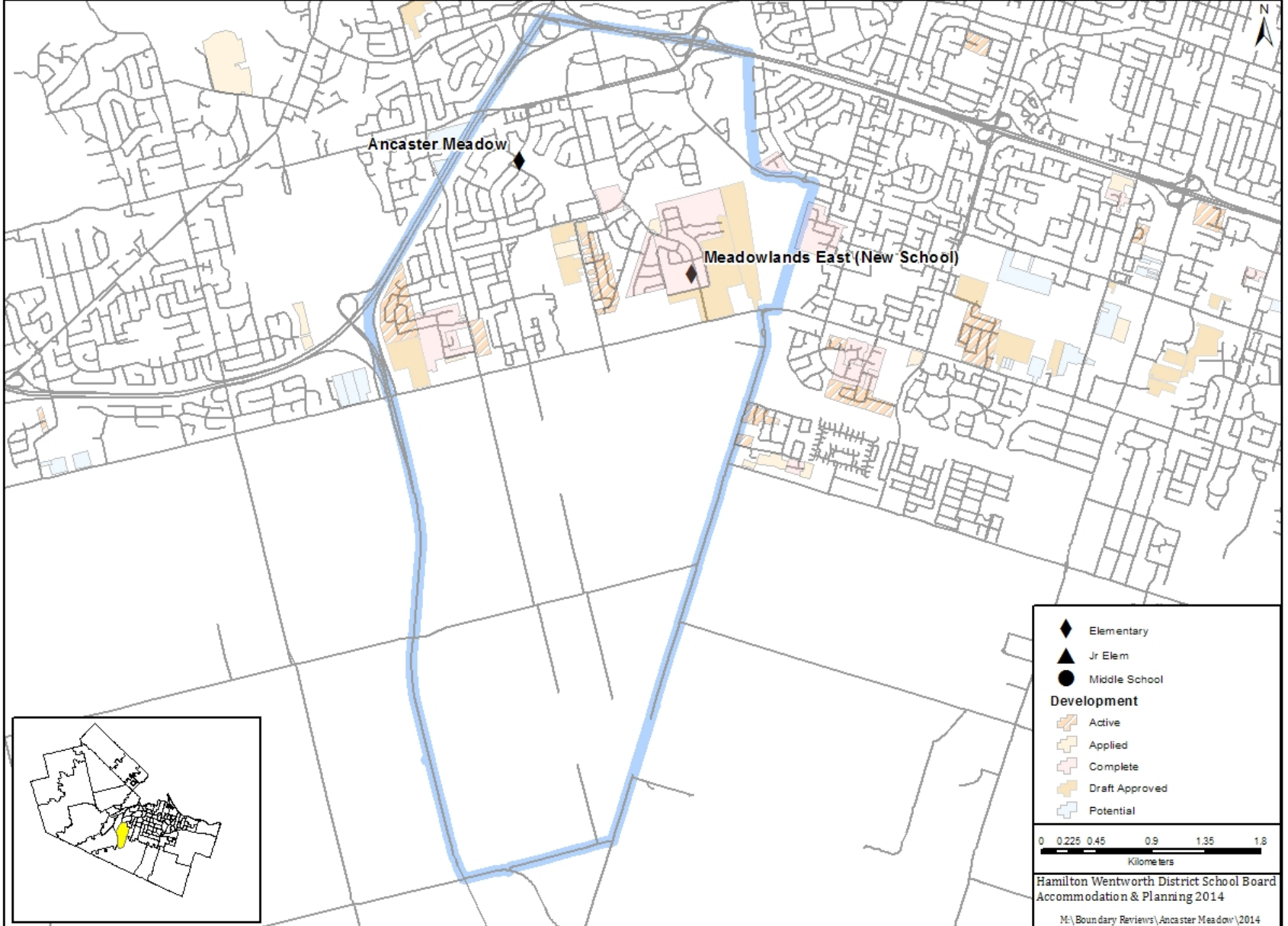
- New school being built in the Tiffany Hills area to accommodate enrolment growth within the current Ancaster Meadow ES attendance boundary (MAP)
  - Opening date: September 2016
- Balancing enrolment between the schools

# Current Ancaster Meadow Attendance Boundary



## Ancaster Meadow ES Attendance Boundary

Accommodation & Planning



- ◆ Elementary
- ▲ Jr Elem
- Middle School

**Development**

- Active
- Applied
- Complete
- Draft Approved
- Potential

0 0.225 0.45 0.9 1.35 1.8  
Kilometers

Hamilton Wentworth District School Board  
Accommodation & Planning 2014  
M:\Boundary Reviews\Ancaster Meadow\2014

# The Enrolment Perspective

# Status Quo Vs. DRAFT Grant Proposal Boundary Change Enrolments

Ancaster Meadow Boundary Review  
Enrolment Projections - Status Quo Vs. DRAFT Proposed Boundary Changes

School	School Capacity	Portables	Portable Capacity	2012	2013	2014	2014 Utilization	2014 Utilization + Portables	2015	2016	2017	2018	2019	2019 Utilization
<b><u>Status Quo Enrolments:</u></b>														
Ancaster Meadow	584	12	276	756	844	907	155%	105%	972	1019	1074	1122	1169	200%
Totals:	584			756	844	907			972	1019	1074	1122	1169	
<b><u>Grant Proposal</u></b>														
<b><u>Proposed Boundary Change Projection:</u></b>														
Ancaster Meadow	584			756	844	907	155%		972	623	629	630	634	109%
New School	450						0%			396	445	492	535	119%
Totals:	1034			756	844	907			972	1019	1074	1122	1169	

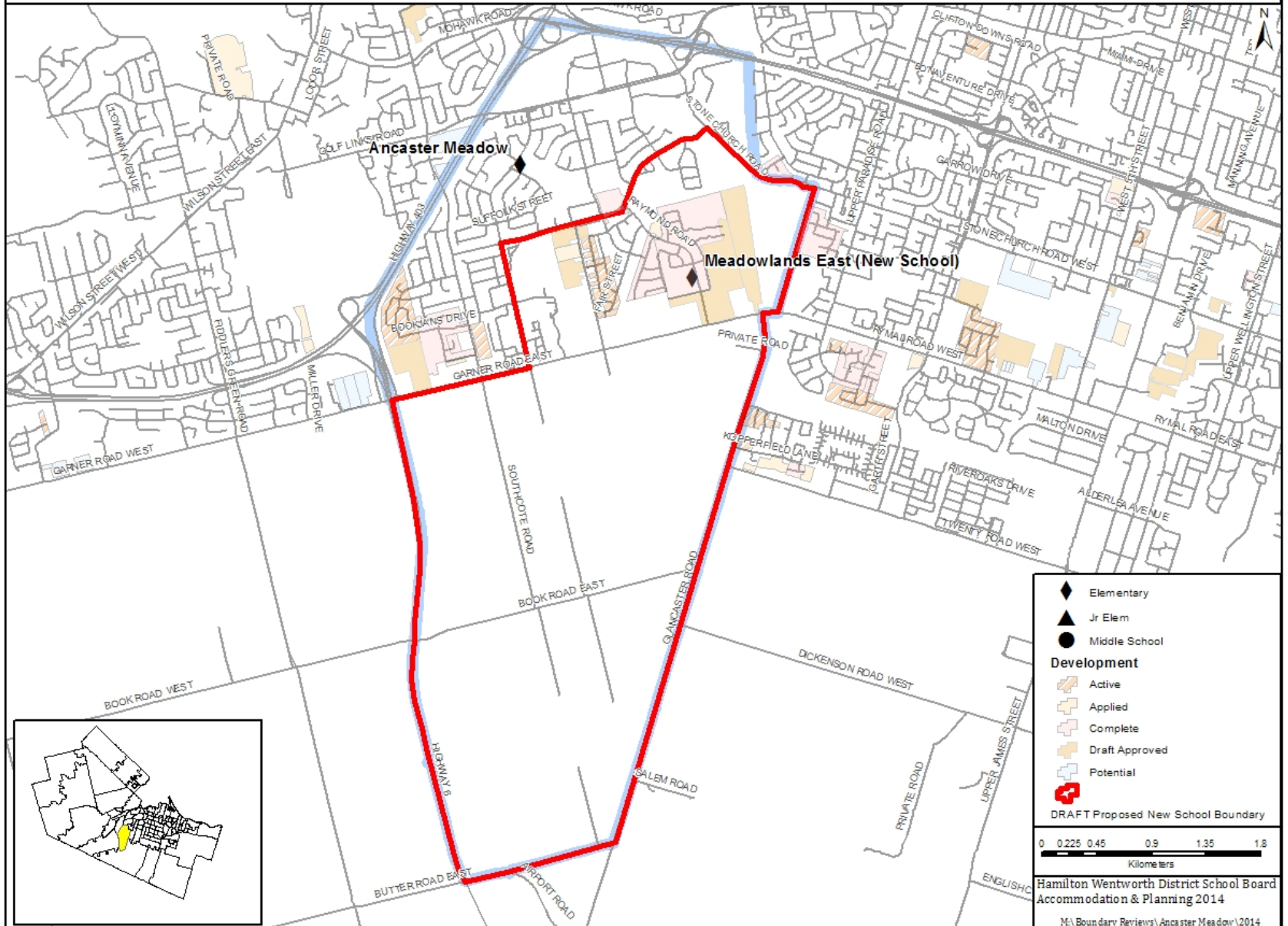
Next slide – Map of DRAFT boundary ....

# DRAFT Proposed School Boundaries

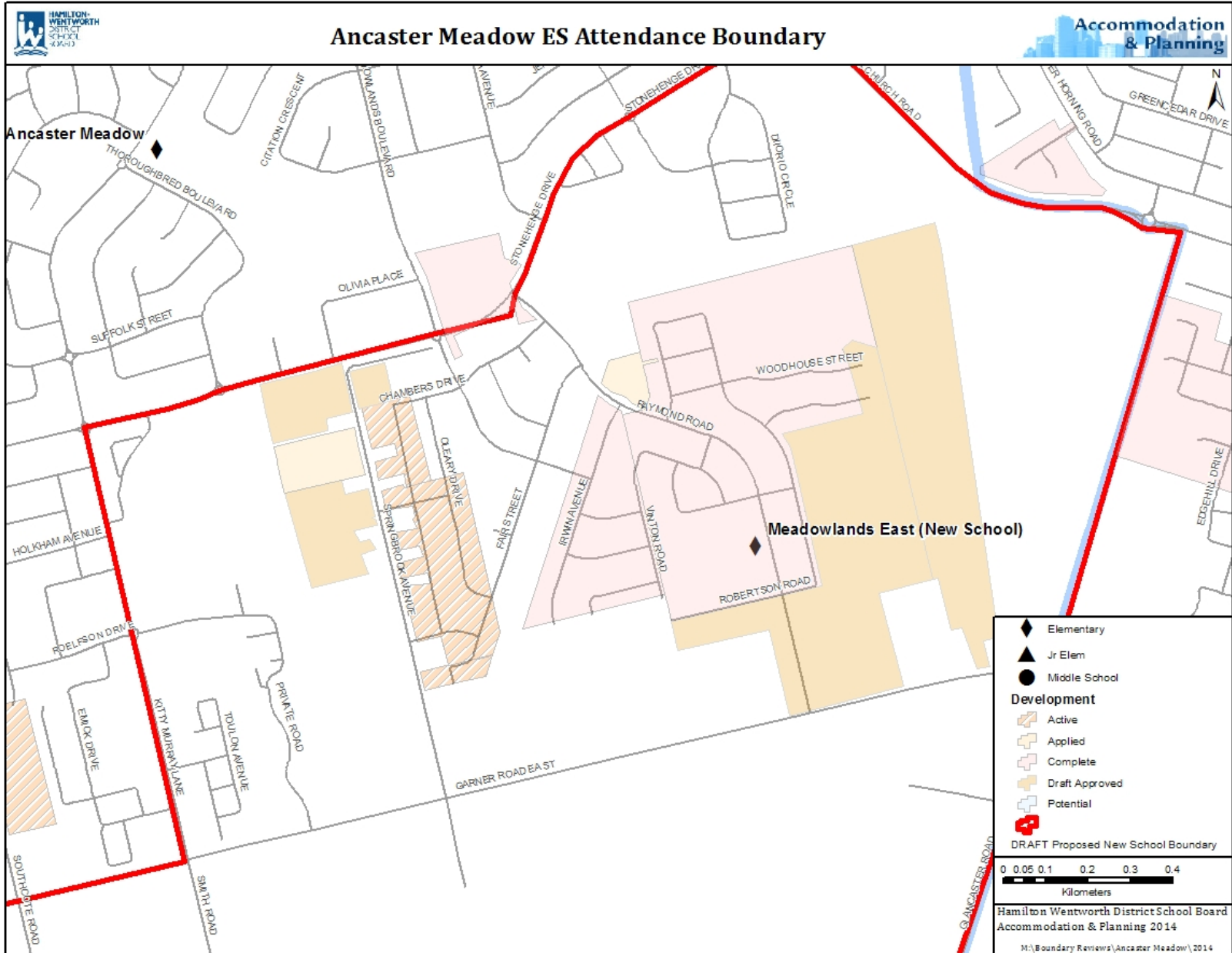


## Ancaster Meadow ES & Draft Proposed New School Attendance Boundary

Accommodation & Planning

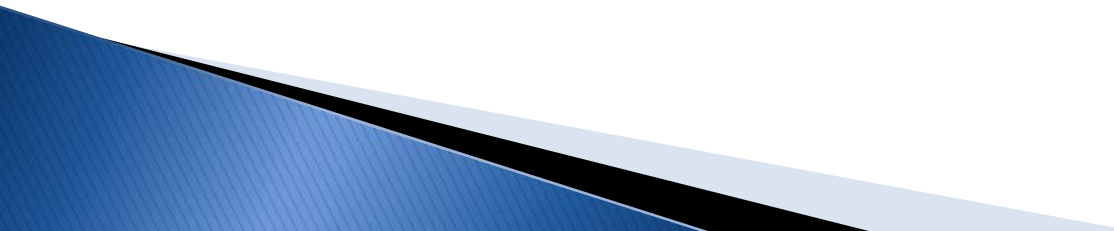


# Close-up DRAFT Proposed School Boundaries

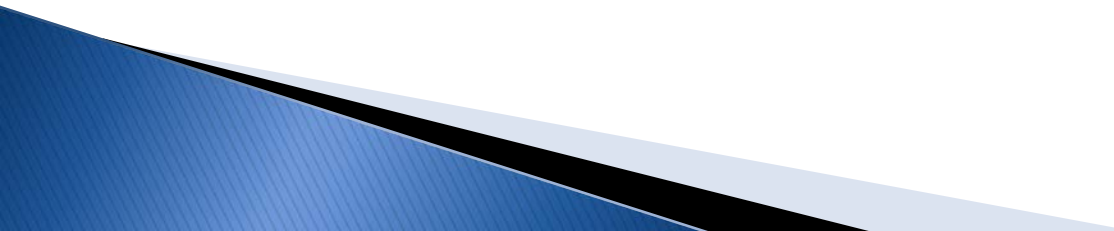




# Up for Discussion – what are our options?

1. Status Quo – not an option
  
  2. The attendance boundary for the Ancaster Meadow and new school
    - Enrolments/students identified and captured within geographic areas
    - The Ministry rated capacity of Ancaster Meadow (584) and the new school (450)
- 

# Next Steps...

- Gather feedback from communities
  - Prepare report to Board for approval
  - Upon approval, determine the scope of an implementation strategy
- 



# Ancaster Meadow Boundary Review

DRAFT Presentation – *Boundary Review Public Meeting*

December 3, 2014