

Pathways to Education

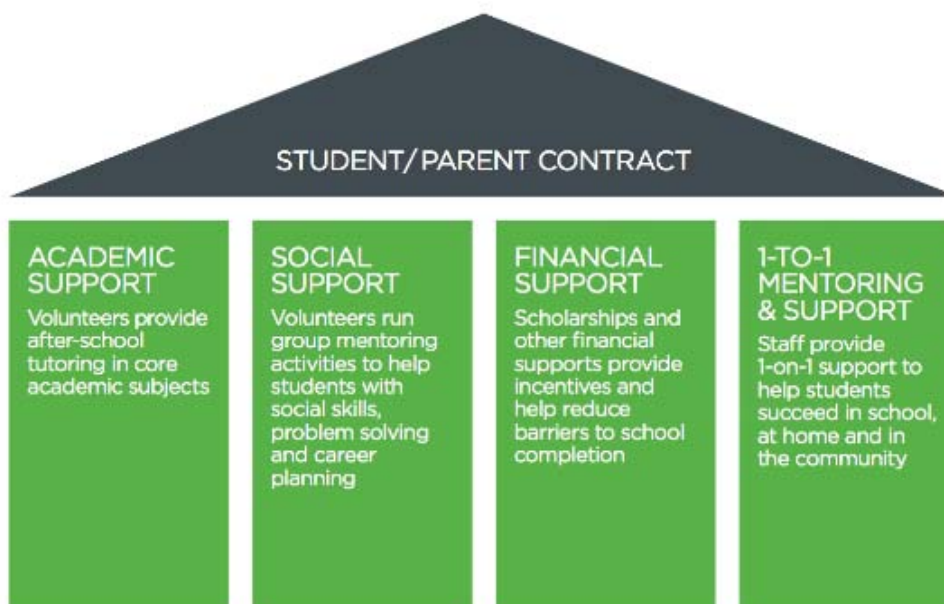
Every year, thousands of Canadian students make the life-altering decision to drop out of high school. In some of the country's most vulnerable neighbourhoods, more than 50 per cent of students do not graduate high school, taking a dramatic toll on our communities, our health and justice systems, and our economy.

Pathways to Education is helping youth in low-income communities graduate from high school and successfully transition into post-secondary education. Pathways addresses systemic barriers to education by providing leadership, expertise and a community-based program proven to lower dropout rates.

The Pathways program provides a comprehensive set of academic, financial and social supports to youth. The results of this unique program have been groundbreaking, reducing high school dropout rates by as much as 70 per cent, and increasing the rate at which youth go on to college or university by up to 300 per cent.

Founded in 2001, Pathways operates nationally across Canada with programs in Ontario, Quebec, Nova Scotia, Manitoba and British Columbia. In Hamilton, the Pathways to Education program has been run by the North Hamilton Community Health Centre for students living in the Bennetto and Keith neighbourhoods since its inception in 2009. In 2016 Pathways to Education NHCHC expanded to include the Gibson and Landsdale neighbourhood.

The Pathways Model



Pathways to Education Staff Coaches

Amaris Rimay



Christine Toito



Jessica Pettigrew



Kamellia Mishriky



Melissa D'Mello



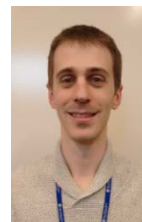
Meghann Spencer



Nathan Savelli



David Isaak



Staff Schedules

Monday	Tuesday	Wednesday	Thursday
Amaris Rimay 8:00 – 3:30	Kamellia Mishriky 8:00-4:00	Amaris Rimay 8:00-3:30	Nathan Savelli 8:00 – 4:00
Christine Toito 8:00 – 4:00	David Isaak 8:00-4:00	Meghann Spencer 8:00-4:00	David Isaak 8:00 – 4:00
Meghann Spencer 8:00-4:00	Jessica Pettigrew 8:00-4:00 (alternating Tuesdays)	Jessica Pettigrew 8:00-4:00	Christine Toito 8:00 – 4:00
Nathan Savelli 8:00 – 4:00	Melissa D'mello 8:00-4:00 (alternating Tuesdays)	Melissa D'mello 8:00-4:00	

How to Register

To register a high school student from North Hamilton for the Pathways to Education program, or to get more information, please contact Pathways to Education at:

North Hamilton Community Health Centre
 438 Hughson Street North
 Hamilton, ON L8L 4N5
 Tel: 905-523-6719

pathways@nhchc.ca www.nhchc.ca

Pathways to Education Catchment Area

The catchment area of the Hamilton Pathways program is:

Boundary Streets

West: Queen St and Wellington St
 South: Barton St and Main St
 East: Sherman Ave
 North: Lake Ontario

Neighbourhoods Served

West: Bennetto
 East: Keith
 South: Gibson and Landsdale (Grade 9 only)

