

## Secondary Pupil Accommodation Review Committee

## Demographic and Enrolment Trends

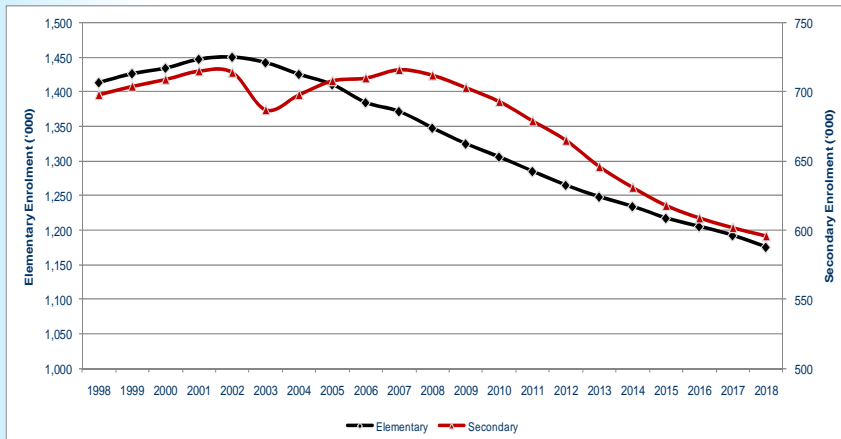
West ARC Working Group Meeting #3  
March 29, 2011

## Provincial Perspectives

- After peaking in 2002, elementary enrolment declined by approximately 5% or 80,000 by 2007
- Between 2007 and 2018, Province-wide elementary enrolment is projected to decline by an additional 14% or 197,000 students
- Between 1998 and 2007 secondary enrolment increased by 3% or 18,000 students
- Province-wide secondary enrolment is projected to decline by 17% or approximately 120,000 students by 2018

## Provincial Perspectives

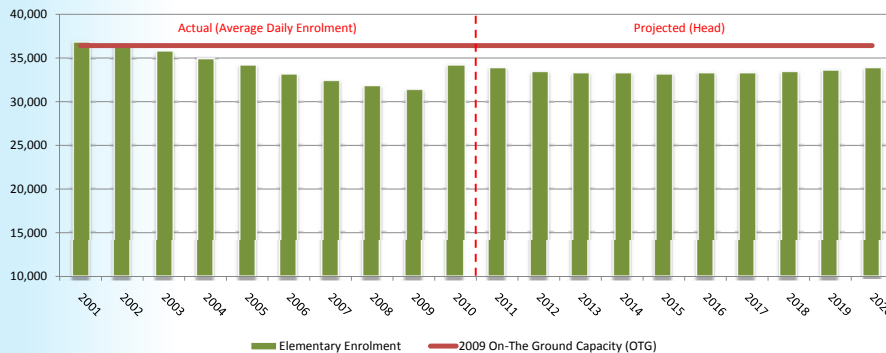
### Historical and Projected Elementary and Secondary Enrolment



Historical and projected totals are calculated using Average Daily Enrolment (ADE)  
Source: Watson & Associates Economists Ltd.

## HWDSB Perspective

### Historical and Projected Elementary Enrolment

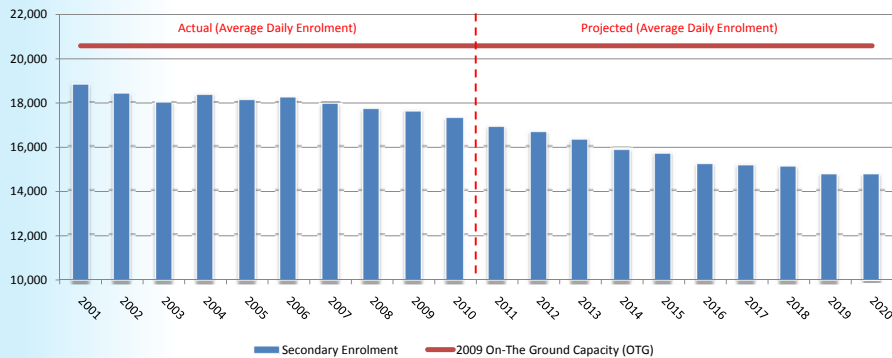


- Between 2001 and 2009 elementary enrolment decreased by 5,543 students or 15%
- Long-term projections indicate that enrolment will decrease by an additional 413 students by 2020
- The impact of this future enrolment trend will result in approximately 2,500 surplus pupil places

NOTE: Projections assume the full implementation of ELP in the 2010 school year  
SOURCE: HWDSB, Planning Department

## HWDSB Perspective

### Historical and Projected Secondary Enrolment



- Between 2001 and 2009 secondary enrolment decreased by 1,210 students or 6%
- Long-term projections indicate that enrolment will decrease by an additional 2,523 students or 15% by 2020
- The impact of this future enrolment trend will result in approximately 5,800 surplus pupil places

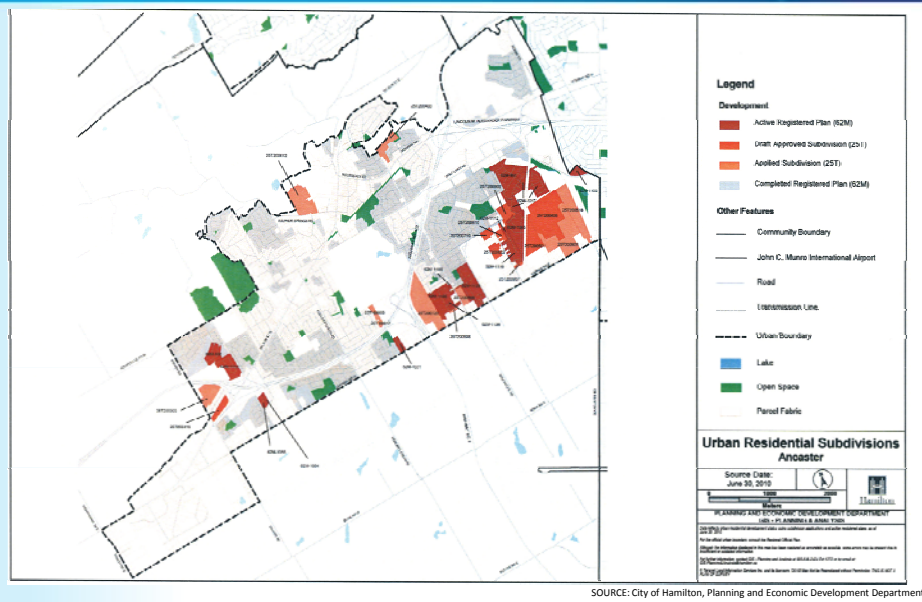
SOURCE: HWDSB, Planning Department

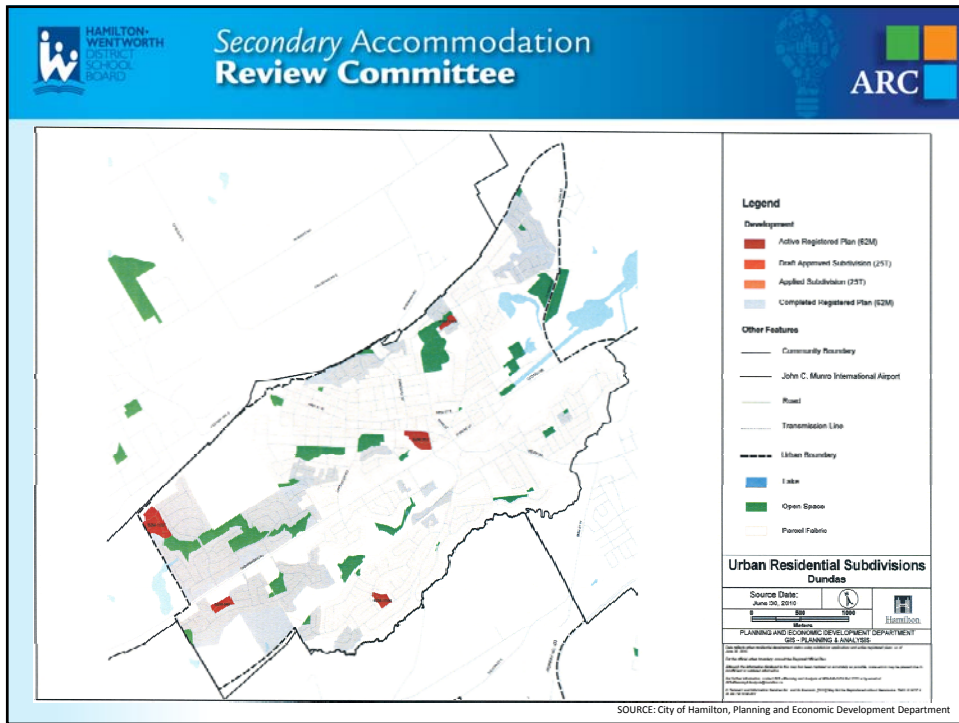
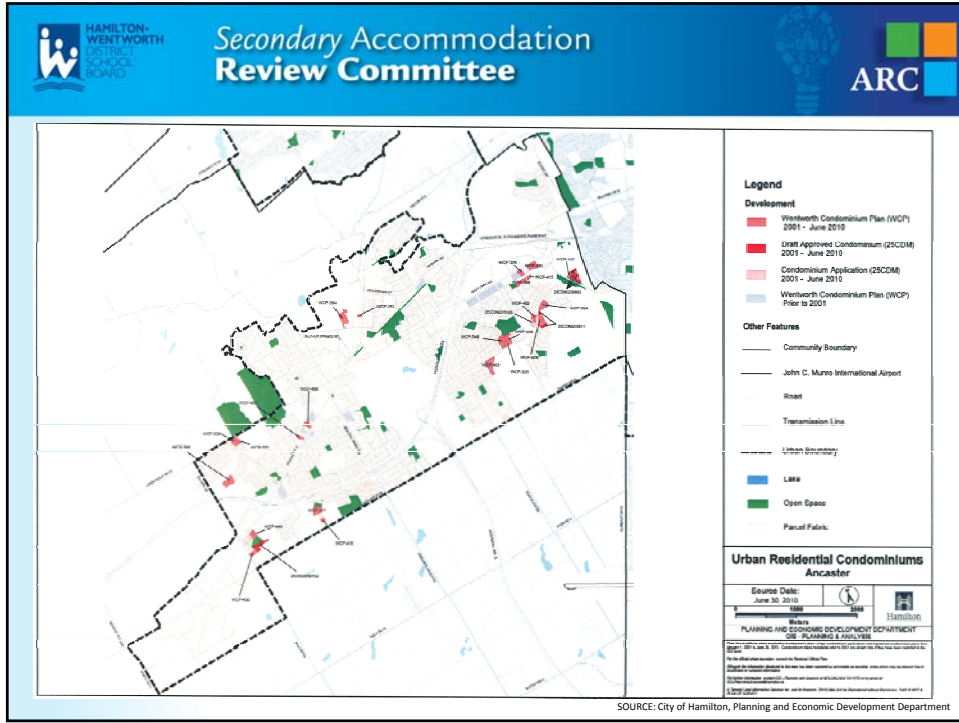
## Components of Enrolment Projections

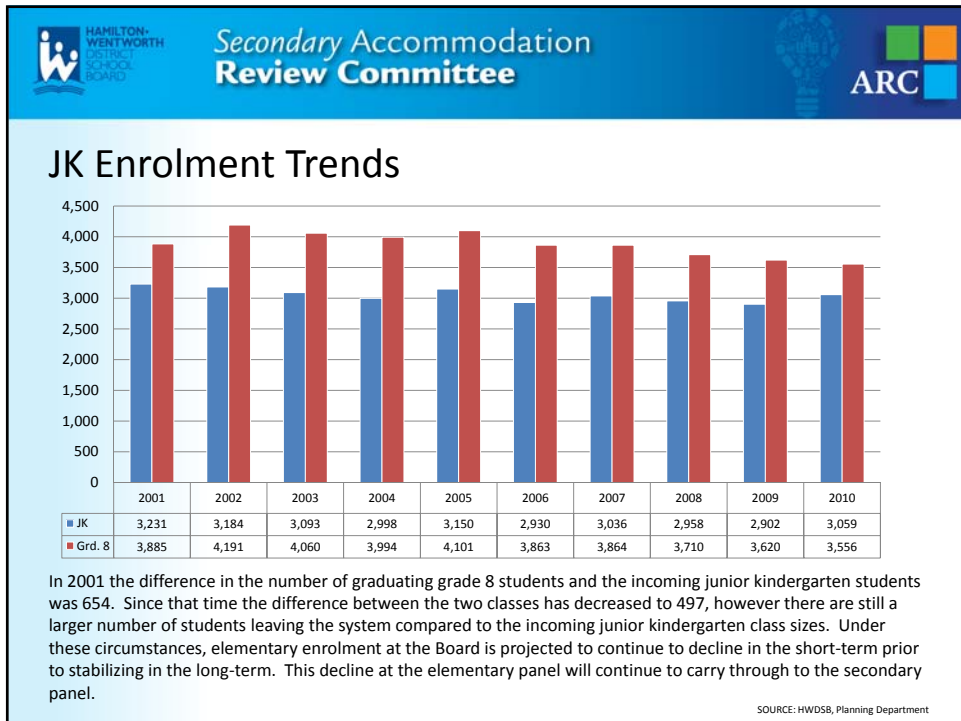
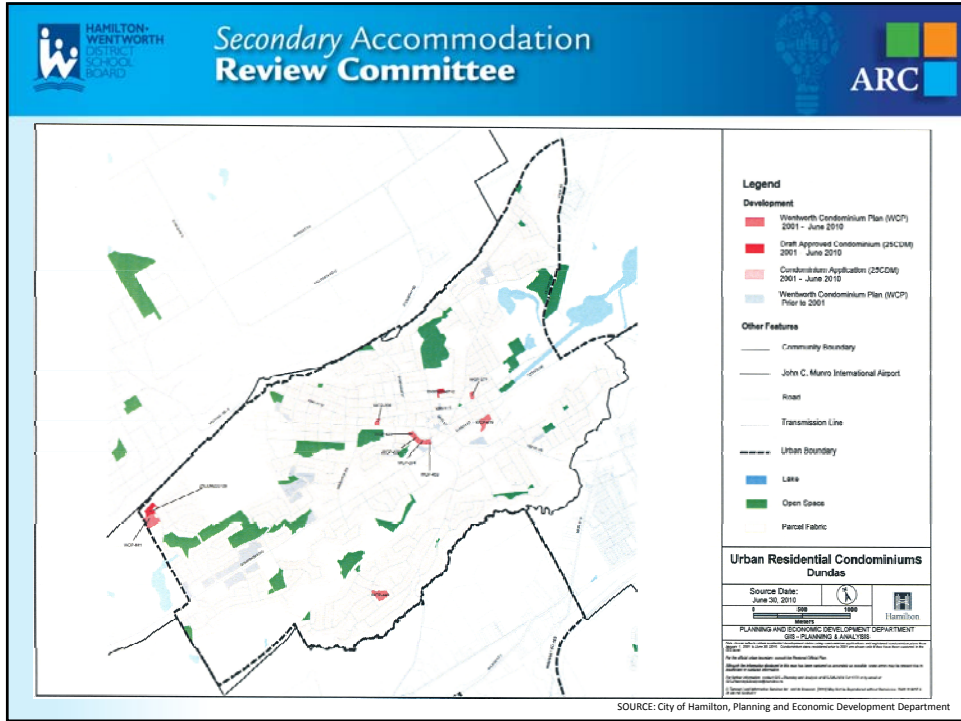
- **Historical Enrolment Data**
  - Hamilton Wentworth District School Board (HWDSB) historical enrolment data by-grade, by-school
  - Historical enrolment from co-terminous boards
- **JK Enrolment**
  - Watson & Associates Economists Ltd. (W&A) in-house demographer develops single year of age projection by region/ municipality
  - Statistics Canada custom tabulation summarizes the population for each Census Tract by age (for 1996, 2001 and 2006)
- **Development Information**
  - Most recent, municipally approved development forecast
  - Units in the development approval process
  - Discussions with municipal planning staff (Summer 2010)
- **Develop Elementary and Secondary Yields**
- **Apportionment Rates**

## Demographic and Housing Trends

- **New Housing Units**
  - 10,500 (approx.) new housing units constructed between 1996 and 2001
  - 6,200 (approx.) new housing units constructed between 2001 and 2006
- **Elementary School Age Population**
  - Between 2001 and 2006 the elementary school age population per household decreased throughout the jurisdiction of the HWDSB
  - Most notable decreases in former Townships of Dundas, Glanbrook and the City of Hamilton
- **Secondary School Age Population**
  - Between 2001 and 2006 the secondary school age population per household remained stable throughout the jurisdiction of the HWDSB
  - Largest increase experienced in former Township of Flamborough
  - Decreases in former Townships of Ancaster, Glanbrook and City of Stoney Creek
- **Birth Data and Fertility Rates**
  - The number of live births between 2001 – 2007 decreased from 5,291 to 5,081
  - Between 2005 – 2007 fertility rates decreased slightly from 1.372 to 1.368
  - Females between the ages of 30-34 accounted for 34% of the total live births in 2007







## Apportionment Rates

### Elementary Apportionment

HWDSB Elementary Students						
2004/ 2005	2005/ 2006	2006/ 2007	2007/ 2008	2008/ 2009	2009/ 2010	Change
34,999	34,242	33,109	32,444	31,884	31,372	-3,627
65.3%	65.1%	64.7%	64.6%	64.5%	64.5%	-0.8%

### Secondary Apportionment

HWDSB Secondary Students						
2004/ 2005	2005/ 2006	2006/ 2007	2007/ 2008	2008/ 2009	2009/ 2010	Change
18,233	17,977	18,091	17,877	17,648	17,582	-651
66.0%	64.9%	64.4%	63.8%	63.2%	62.4%	-3.6%

### HWDCSB Elementary Students

2004/ 2005	2005/ 2006	2006/ 2007	2007/ 2008	2008/ 2009	2009/ 2010	Change
18,638	18,351	18,034	17,794	17,496	17,295	-1,343
34.7%	34.9%	35.3%	35.4%	35.5%	35.5%	0.8%

### HWDCSB Secondary Students

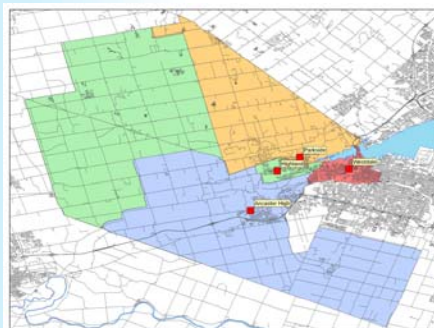
2004/ 2005	2005/ 2006	2006/ 2007	2007/ 2008	2008/ 2009	2009/ 2010	Change
9,398	9,710	9,985	10,136	10,270	10,598	1,200
34.0%	35.1%	35.6%	36.2%	36.8%	37.6%	3.6%

#### Factors influencing apportionment levels at the HWDSB include:

- Open access (secondary only)
- New school facilities or program offerings
- Ability to service rural communities

SOURCE: Ministry of Education, School Board Funding Projections for the 2010-11 School Year (Spring 2010)

## West ARC Cluster of Schools



#### Development and Yield Information (1996 – 2006):

- 3,600 new units constructed (Avg. 360 units/ year)
- Elementary yield has remained stable at approx. 0.27
- Secondary yield increased from 0.105 to 0.140

#### General Observations:

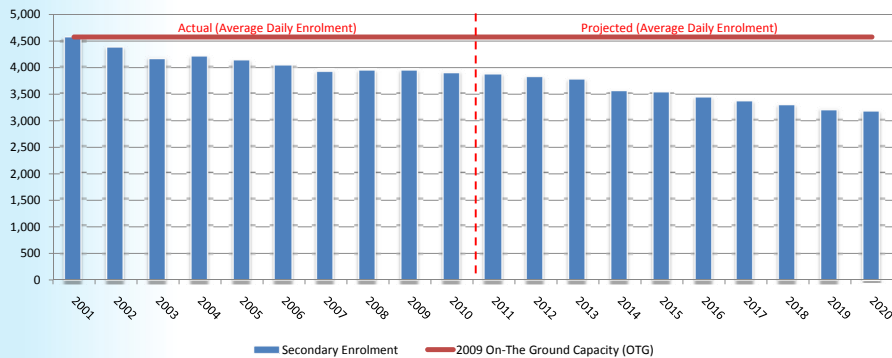
- Approximately 70% of new home construction occurred between 1996-2001
- Secondary yields remained stable between 2001 – 2006
- Approximately 5,500 additional residential units forecasted for this area
- 4,700 units (Ancaster) and 800 units (Dundas)

Age	1996 Census Population	2001 Census Population	2006 Census Population	Change 1996 - 2001	% Change 1996 - 2001	Change 2001 - 2006	% Change 2001 - 2006
<b>0 – 3</b> Pre-School Aged	3,651	4,041	4,106	390	11%	65	2%
<b>4 – 13</b> Elementary School-Aged	11,180	11,599	11,623	419	4%	24	0.2%
<b>14 – 17</b> Secondary School-Aged	4,281	5,415	5,827	1,134	27%	413	8%

Source: Statistics Canada, 1996, 2001 and 2006 Census Profile Data

## West ARC Cluster Perspective

### Historical and Projected Secondary Enrolment



- Between 2001 and 2009 secondary enrolment decreased by approx. 622 students or 14%
- Long-term projections indicate that enrolment will decrease by an additional 743 students or 19% by 2020
- The impact of this future enrolment trend will result in approximately 1,400 surplus pupil places

SOURCE: HWDSB, Planning Department

## Summary

### Projection Methodology

- There are a number of variables that are factored into the creation of enrolment projections
- Projections are not an exact science
- When reviewing enrolment projections the focus should be on the long-term trends as opposed to the exact numbers

### Provincial Perspective

- Elementary enrolment peaked in 2002, with secondary enrolment peaking several years later
- There are still areas of growth throughout the Province but not enough to offset the decline being experienced in maturing communities

### HWDSB Perspective

- Elementary enrolment decreased by approximately 5,500 students between 2001 and 2009
- During the same time period, enrolment at the secondary panel decreased by 1,200 students
- The decline experienced at the elementary panel continues to impact secondary enrolments
- West ARC Cluster is projected to have approximately 1,400 surplus pupil places by 2020