

Howard Barker

XXXXXXXXXXXXXXXXXXXXXXXXXXXXXXXXXXXX

(input from Patrick Rowan)

The issues we are being asked to address are at the forefront of the inevitable clash between a socialist-based public education system and the free-market economic system.

ideologies of public education and the free-market run largely counter to each other

The obvious options we have are:

1. support the socialist system through creative innovation;
2. support the socialist system through acceptance of cuts; or
3. weaken the socialist system by inviting in the free-marketeers.

If we want a system that looks like what we have, exhaust (1) before acting on (2) or (3)

Howard Barker

XXXXXXXXXXXXXXXXXXXXXXXXXXXXXXXXXXXX

(input from Patrick Rowan)

The issues we are being asked to address are at the forefront of the inevitable clash between a socialist-based public education system and the free-market economic system.

ideologies of public education and the free-market run largely counter to each other

The obvious options we have are:

1. support the socialist system through creative innovation;
2. support the socialist system through acceptance of cuts; or
3. weaken the socialist system by inviting in the free-marketeers.

If we want a system that looks like what we have, exhaust (1) before acting on (2) or (3)

After the stock market crash of 1929, Lord Rutherford did not say to his lab at McGill, “We have no money, I have to cut you”... he said, “We have no money, so we have to think!”.

From ARC's homepage:

HWDSB is committed to creating *innovative learning environments* for the 21st century that support student achievement.

Senior staff's recommendation to ARC:

close Parkside HS in June 2013

Comments on Senior staff's recommendation (SSR)

The SSR does:

promote school closures via ***budgetary considerations only***

claim that "... *increasing enrolment per school would benefit students... greater course selection... flexible and more opportunities...*"

claim to be \$160M shy across Board for adequate upkeep and renovations... Parkside to generate at most \$5M... quickly diffused across Board

claim that proceeds from the sale of Parkside would be "***reinvested back into schools and programs***" (i.e., at Highland)... but no binding agreement

claim to satisfy an "***open and transparent process***"... release *appears* to have been *calculated* to disenrol students from Parkside thereby hastening under-utilization and making the architects of the plan appear all the wiser...

likely scenario: enrolment will *increase* once Parkside's head is off the block and development north of Dundas continues

Comments on Senior staff's recommendation (SSR)

The SSR does not:

avoid, by its own admission, over-capacity at Highland (or vice versa Parkside)

provide support for estimates of *Enrolment Utilization...* presented as perfect...
alternate scenarios???... misleading, irresponsible data management

provide an impact assessment of certain increases to bus/car traffic along
Governor's Rd. (or Parkside neighbourhood) (Parkside → Highland... 3.2 km)

consider further expansion of Waterdown et al.

consider the central role of Parkside in Dundas for over 50 yrs

recognize that closing 1 of 2 high schools in Dundas could easily leave future
generations (e.g., 4 or 5 cycles out) short-changed and disadvantaged

set a good example of how educated people should deal with difficult problems

Board estimates (source? errors?)



Secondary Accommodation Review Committee



Proposed Option:

	Current Situation				Proposed Option			
	2009 OTG	2013/14 (Enrolment/ Utilization)	2015/16 (Enrolment/ Utilization)	2020/21 (Enrolment/ Utilization)	2013 OTG	2013/14 (Enrolment/ Utilization)	2015/16 (Enrolment/ Utilization)	2020/21 (Enrolment/ Utilization)
Ancaster	1,356	969 (71%)	967 (70%)	882 (64%)	1,356	1,101 (81%)	1,091 (80%)	988 (73%)
Highland	924	667 (72%)	597 (62%)	489 (51%)	924	1,062 (115%)	968 (105%)	806 (87%)
Parkside	777	527 (68%)	495 (64%)	423 (54%)	-	-	-	-
Westdale	1,521	1,600 (105%)	1,451 (92%)	1,345 (85%)	1,521	1,600 (105%)	1,451 (92%)	1,345 (85%)
TOTAL	4,578	3,763 (83%)	3,510 (75%)	3,139 (67%)	3,801	3,763 (99%)	3,510 (92%)	3,139 (83%)

Utilization for the proposed option is calculated using On-The-Ground (OTG) capacity

- how were these estimates arrived at?... errors?... uncertainties?

what if...

Hamilton-Wentworth District School Board - West ARC, Public Meeting #2 – May 31, 2011

What if 90%, rather than 75%, of Parkside goes to Highland?



Secondary Accommodation Review Committee



Proposed Option:

	Current Situation				Proposed Option			
	2009 OTG	2013/14 (Enrolment/ Utilization)	2015/16 (Enrolment/ Utilization)	2020/21 (Enrolment/ Utilization)	2013 OTG	2013/14 (Enrolment/ Utilization)	2015/16 (Enrolment/ Utilization)	2020/21 (Enrolment/ Utilization)
Ancaster	1,356	969 (71%)	967 (70%)	882 (64%)	1,356	1,022 (75%)	1,017 (75%)	924 (68%)
Highland	924	667 (72%)	597 (62%)	489 (51%)	924	1,141 (123%)	1042 (113%)	870 (94%)
Parkside	777	527 (68%)	495 (64%)	423 (54%)	-	-	-	-
Westdale	1,521	1,600 (105%)	1,451 (92%)	1,345 (85%)	1,521	1,600 (105%)	1,451 (92%)	1,345 (85%)
TOTAL	4,578	3,763 (83%)	3,510 (75%)	3,139 (67%)	3,801	3,763 (99%)	3,510 (92%)	3,139 (83%)

Utilization for the proposed option is calculated using -TheGround (OTG) capacity

- Highland will be 95% - 125% between 2013-2020!
- portables?... high S:T?...

Hamilton-Wentworth District School Board - West ARC - Public Meeting #2 - May 31, 2011
 not what most would call an "innovative learning environment"

What if Highland closes and 60% go to Parkside & 40% to Ancaster?



Secondary Accommodation Review Committee



Proposed Option:

	Current Situation				Proposed Option			
	2009 OTG	2013/14 (Enrolment/Utilization)	2015/16 (Enrolment/Utilization)	2020/21 (Enrolment/Utilization)	2013 OTG	2013/14 (Enrolment/Utilization)	2015/16 (Enrolment/Utilization)	2020/21 (Enrolment/Utilization)
Ancaster	1,356	969 (71%)	967 (70%)	882 (64%)	1,356	1,236 (91%)	1,206 (89%)	1078 (79%)
Highland	924	667 (72%)	597 (62%)	489 (51%)	-	-	-	-
Parkside	777	527 (68%)	495 (64%)	423 (54%)	777	927 (120%)	853 (110%)	716 (92%)
Westdale	1,521	1,600 (105%)	1,451 (92%)	1,345 (85%)	1,521	1,600 (105%)	1,451 (92%)	1,345 (85%)
TOTAL	4,578	3,763 (83%)	3,510 (75%)	3,139 (67%)	3,654	3,763 (103%)	3,510 (96%)	3,139 (86%)

Utilization for the proposed option is calculated using -TheGround (OTG) capacity

- Parkside will be 90% - 120% between 2013-2020!
- portables?... high S:T?...

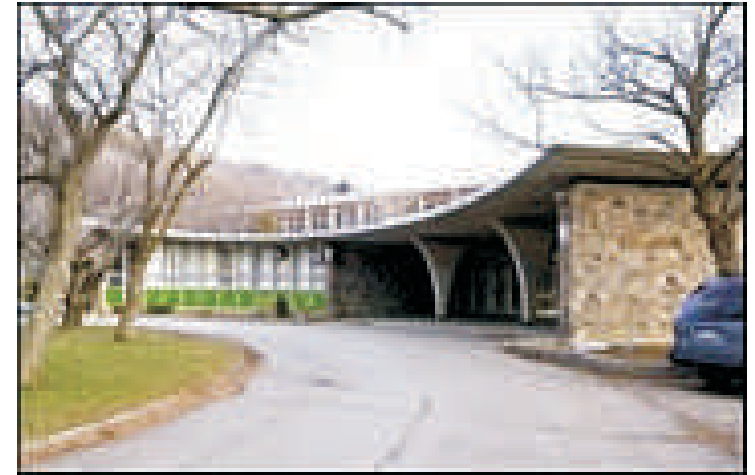
Hamilton-Wentworth District School Board, West ARC, Public Meeting #2 - May 31, 2011
 not what most would call an "innovative learning environment"

When Waterdown expands further where will students go?



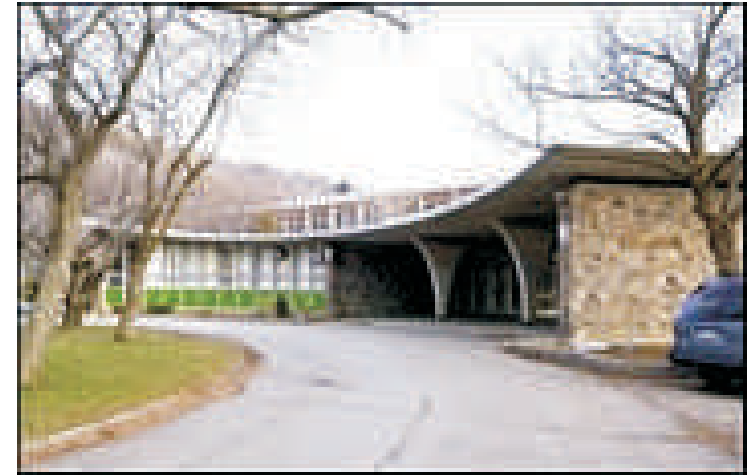
Qualitative reasons to maintain existing schools

- schools are few and far between
- should be viewed as societal assets
- central to community identity and history
- are often good, well maintained, safe, examples of period architecture
- a closed school will be needed... enrolment estimates are imperfect
- **minimizes overcrowding... “innovative learning environments”...**
“No student should experience overcrowded and/or under equipped facilities as the results of closure of any facility” ... (Dundas Area ARC Report - June 23, 2003)



Qualitative reasons to maintain existing schools

- schools are few and far between
- should be viewed as societal assets
- central to community identity and history
- are often good, well maintained, safe, examples of period architecture
- a closed school will be needed... enrolment estimates are imperfect
- minimizes overcrowding... *“innovative learning environments”*...
“No student should experience overcrowded and/or under equipped facilities as the results of closure of any facility” ... (Dundas Area ARC Report - June 23, 2003)



Hamilton-Wentworth District School Board - West ARC, Public Meeting #2 – May 31, 2011
closure is NOT the answer

What to do in the event of (temporary) reduced enrolment

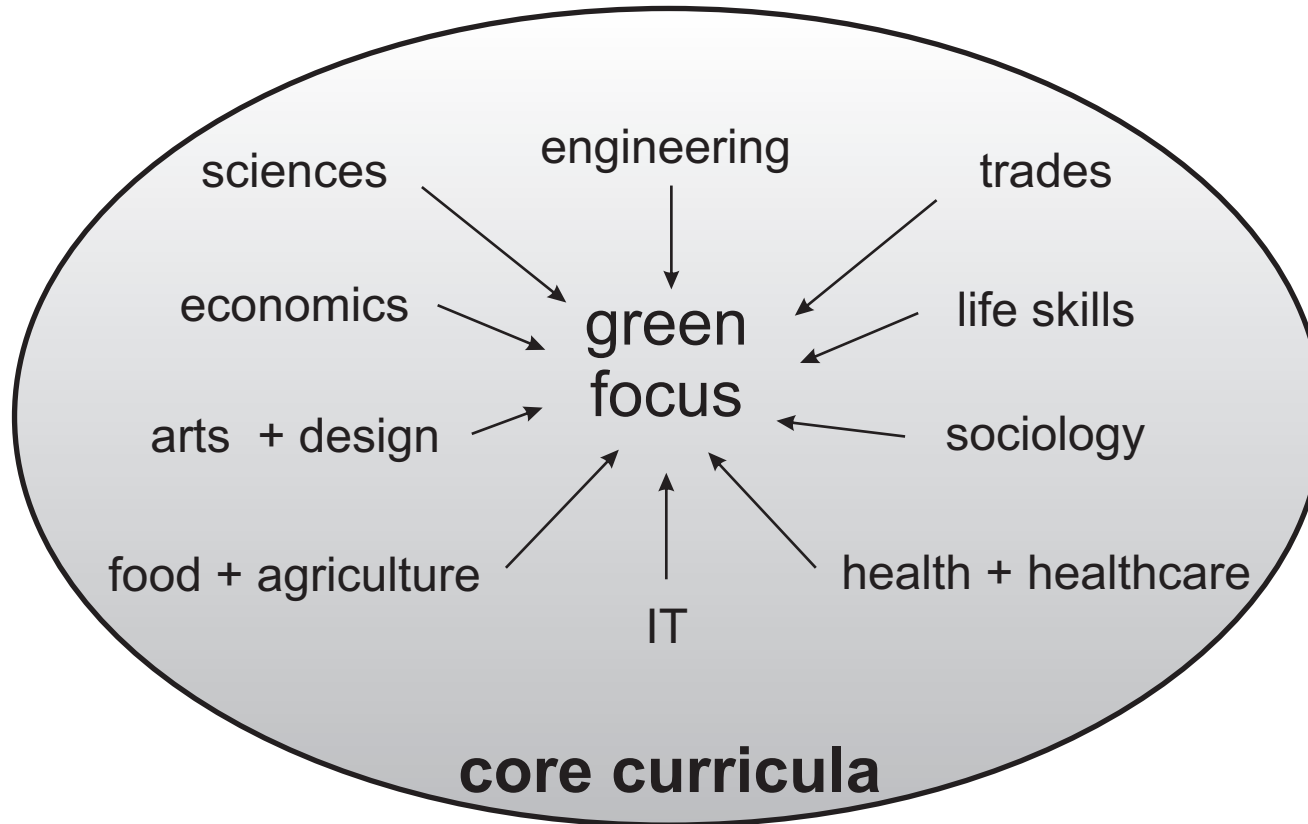
don't throw out the baby with the bathwater!!!

get imaginative and innovative:

- close-off parts of the school**
- split curricula with Highland (temporary?)**
- rent parts of the school (stop-gap)**
 - can this be done?... if not, change things!!!**
- alternate sources of funding... cf. Richard's presentation**
 - renewable energy ~\$800,000 to Waterdown... solar**
 - renewable energy ~\$432,000 to Catholic board... wind**
 - Min. Res. and Innov. + Min. Ed. ~\$200,000 to Catholic board... toilet flushing of all things!!!**
 - TD Friends of the Environment, Hamilton Stewardship Council**
- create Super-Specialist High Skills Major programmes (S-SHSM)**

S-SHSM

Adoption by the HWDSB of a strong and well-defined 'green-school', that would represent a *highly visible* move in the right direction for the City of Hamilton



Green is not just the colour of money... it's the colour of LIFE

Students should ride the next waves, not be swept along by them

Hamilton-Wentworth District School Board - West ARC, Public Meeting #2 – May 31, 2011

today's *Economist*... Anthropocene... get on with solutions!!!

Convert Parkside HS into a Green S-SHSM School

- existing staff and building
- *walking* distance to
 - RBG (Canada's largest botanical garden)
 - Cootes (Provincially significant Class 1 Wetland)
 - Niagara Escarpment + Rock Chapel (UNESCO Biosphere Reserve)
- local experts in science, outdoor ed., green tech., green eco.
- McMaster + Hamilton Health Care
- strong community that can contribute to a green-streamed high school
- regular SHSM (awaiting approval?) at Waterdown



Summary

Senior staff's recommendation:

- driven overwhelmingly by budgetary considerations
- shows little consideration for students and community... neglects ARC-2003's recommendations
- creates over-capacity at Highland (or Parkside if Highland closed)
- no uncertainty analyses performed... irresponsible data management
- Ham. Spec. (May 31, 2011):
 - HWDSB amends code of ethics:
 - “...represent the board and its officers in a positive light”
 - “...call(s) on trustees to give priority to the interests of the board over the interests of their constituents.”

Summary

An opportunity for HWDSB and Hamilton:

- its image is in sad need of repair (cf. Pittsburgh, PA... and last night's AQI)
- capitalize on locality + community
- apply your *raison d'état* to yourself...
 - get innovative...
 - convert Parkside HS into a Green S-SHSM school