

South Secondary Accommodation Review Committee

Working Group Meeting # 14

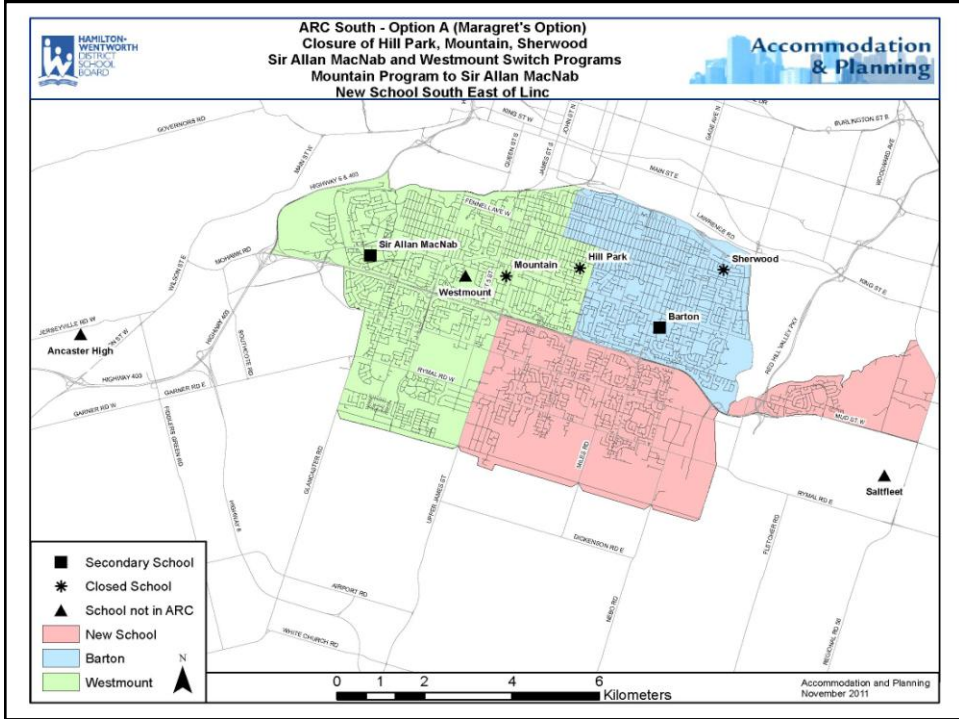
Accommodation Concepts

Barton – Hill Park – Mountain – Sherwood – Sir Allan MacNab

December 7th, 2011

	Barton	Hill Park	Mountain	Sherwood	Sir Allan MacNab	New School	Westmount
Status Quo	No Change	No Change	No Change	No Change	No Change	n/a	n/a
Concept A (Margaret)	Realign Boundary	Close	Close Program to MacNab	Close	Contains Mountain and Westmount Program	South-East of Linc	Contains MacNab Program
Concept B (Jackie)	Realign Boundary	Contains Westmount Program	Mountain and Additional Programs	Close	Close	South-East of Linc	Contains Hill Park Program
Concept C (Amended Option 5)	Realign Boundary	Close	Close Program to New School	Close	Realign Boundary	South-East of Linc	n/a

Recommended to go forward to Trustees



Secondary Accommodation Review Committee

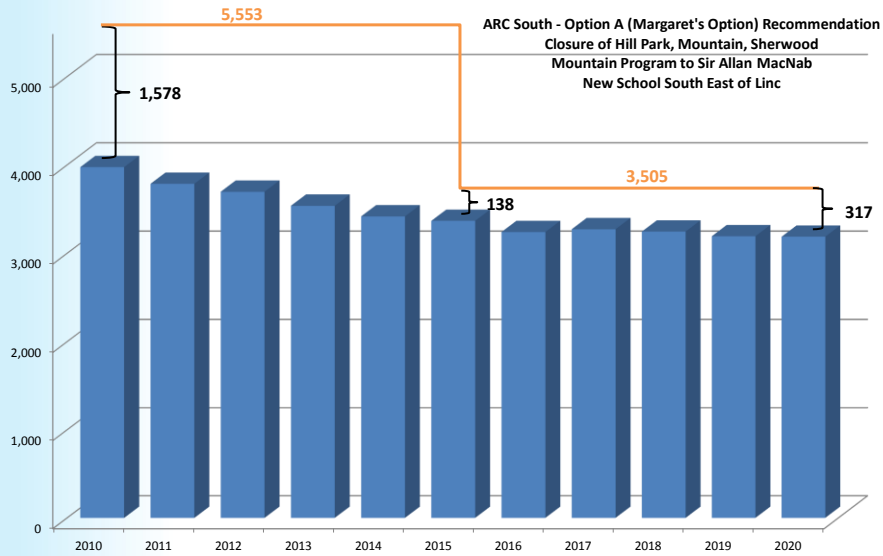
ARC

ARC South Option A (Margaret Option)

Recommendation

	Capacity	2010	2015	2020
Barton	1092			
Enrolment		871	1,291	1,209
Utilization		80%	118%	111%
New School	1000			
Enrolment		-	900	858
Utilization		-	90%	86%
Sir Allan MacNab (Includes Mountain Program)	1413			
Enrolment		867	1,176	1,120
Utilization		61%	83%	79%
Cluster Utilization		72%	96%	91%

Includes Closure of Hill Park, Mountain and Sherwood
Mountain program to Sir Allan MacNab
New School South East of Linc

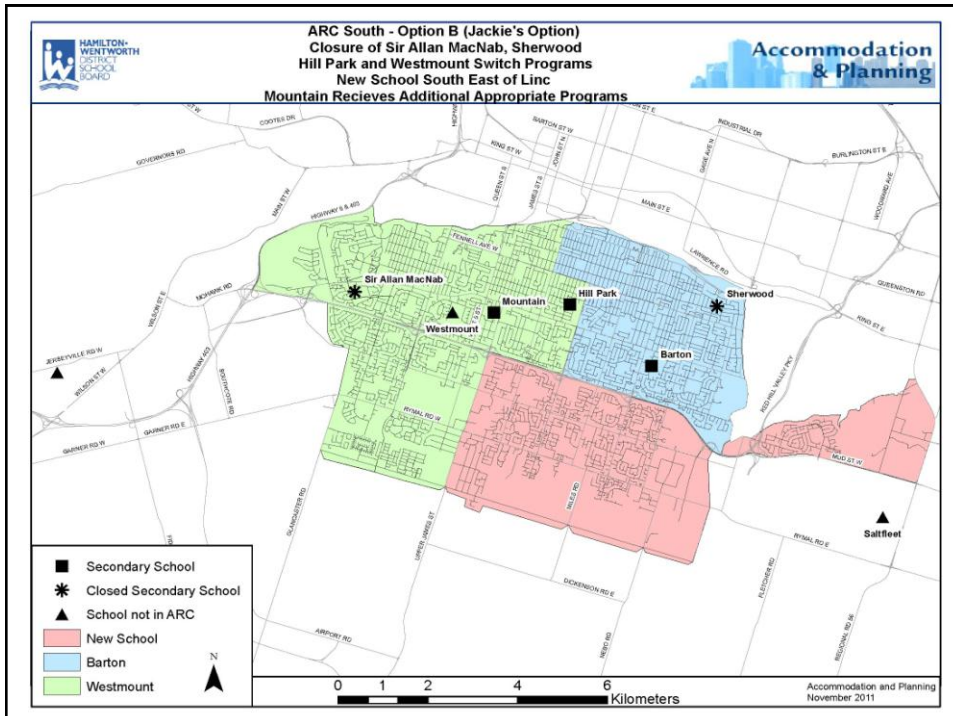
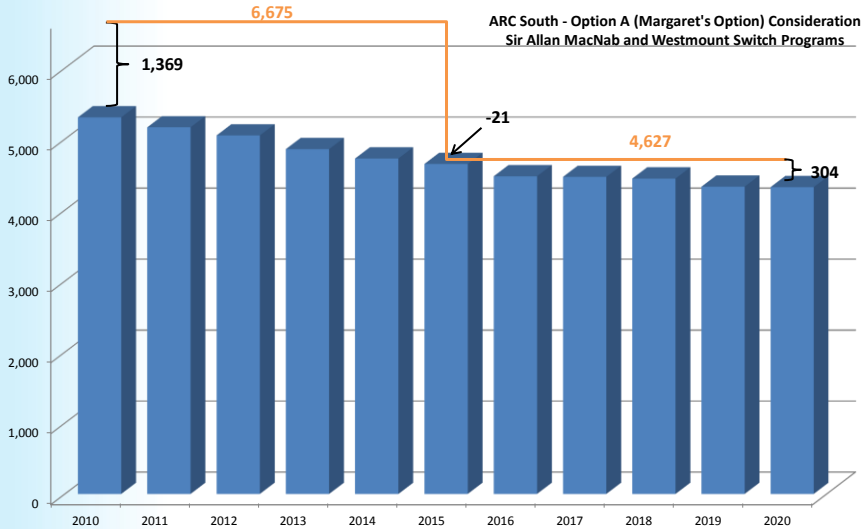


ARC South Option A (Margaret Option)

Consideration

	Capacity	2010	2015	2020
Barton	1092			
Enrolment		871	1,291	1,209
Utilization		80%	118%	111%
New School	1000			
Enrolment		-	902	858
Utilization		-	90%	86%
Sir Allan MacNab Includes (Mountain) Program	1413			
Enrolment		867	1,464	1,307
Utilization		61%	104%	92%
Westmount	1122			
Enrolment		1,331	994	949
Utilization		119%	89%	85%
Cluster Utilization		79%	100%	93%

Sir Allan MacNab and Westmount Switch Programs

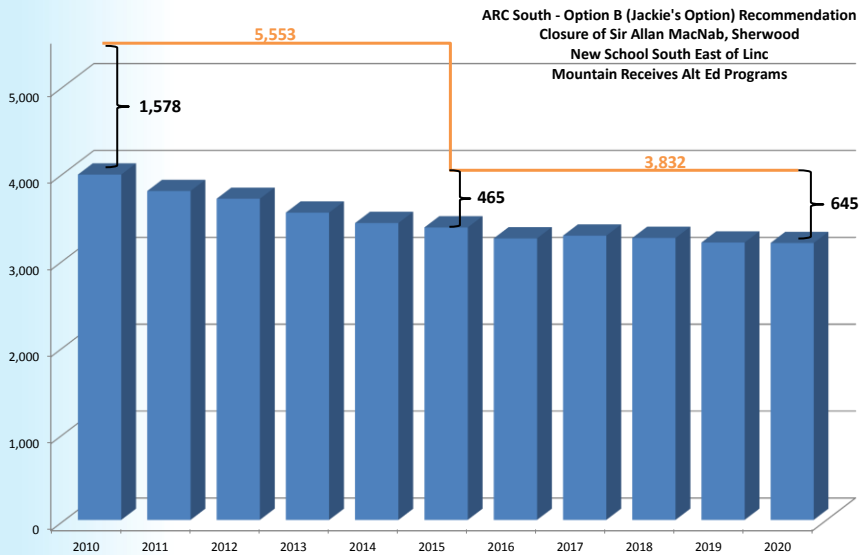


ARC South Option B (Jackie's Option)

Recommendation

	Capacity	2010	2015	2020
Barton	1092			
Enrolment		871	1,291	1,209
Utilization		80%	118%	111%
Hill Park	1215			
Enrolment		857	994	949
Utilization		71%	82%	78%
Mountain	525			
Enrolment		179	182	171
Utilization		34%	35%	33%
New School	1000			
Enrolment		-	900	858
Utilization		-	90%	86%
Cluster Utilization		72%	88%	83%

Closure of Sir Allan MacNab, Sherwood
New School South East of Linc

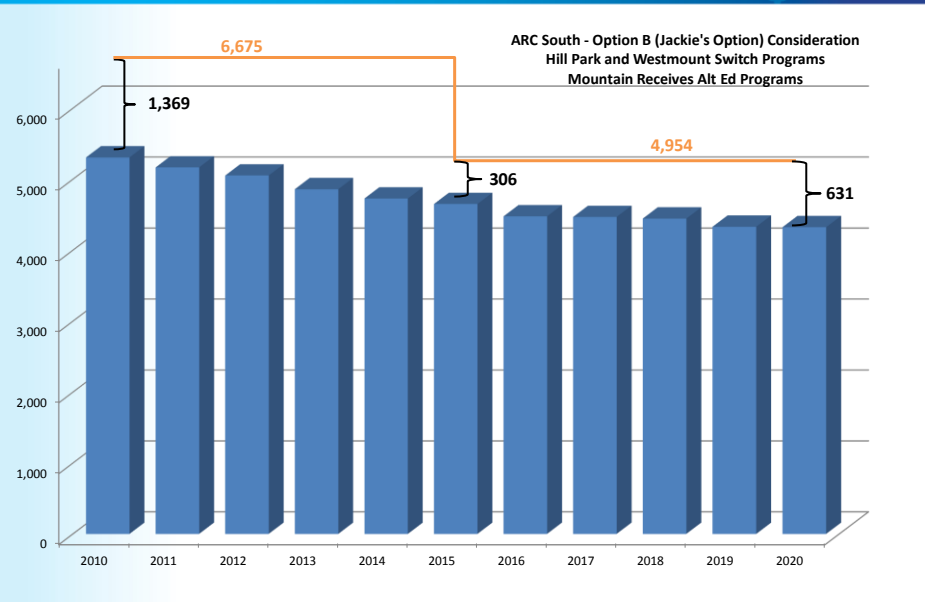


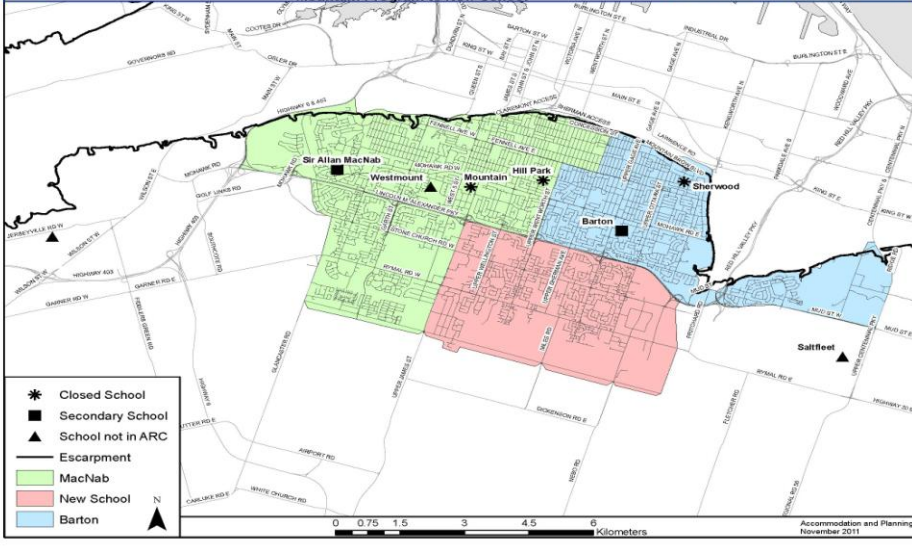
ARC South Option B (Jackie's Option)

Consideration

	Capacity	2010	2015	2020
Barton	1092			
Enrolment		871	1,291	1,209
Utilization		80%	118%	111%
Hill Park	1215			
Enrolment		857	1,282	1,135
Utilization		71%	105%	93%
Mountain	525			
Enrolment		179	182	171
Utilization		34%	35%	33%
New School	1000			
Enrolment		-	900	858
Utilization		-	90%	86%
Westmount	1122			
Utilization		119%	89%	85%
Cluster Utilization		79%	94%	87%

Hill Park and Westmount Switch Programs
 Mountain Receives Additional Appropriate Programs

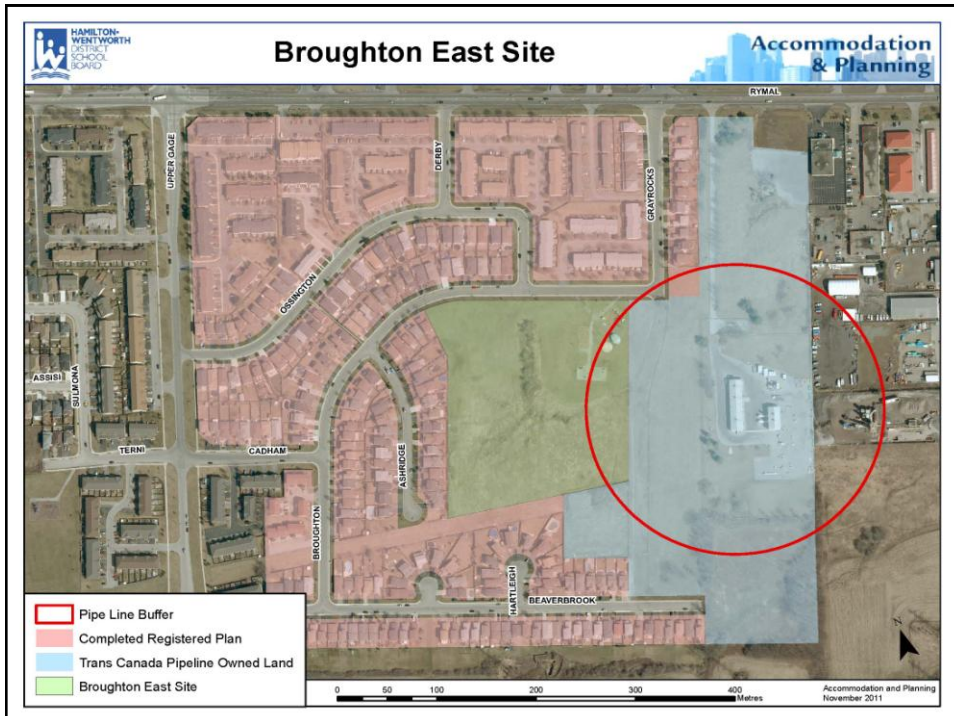
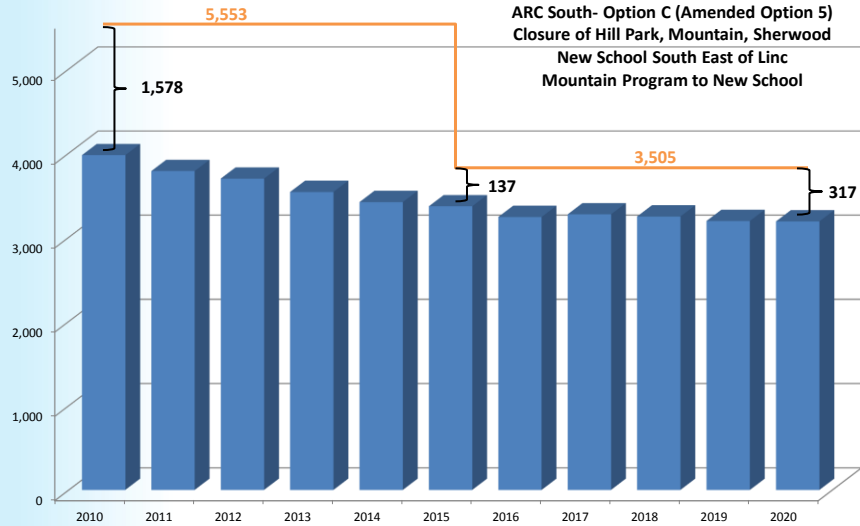




ARC South Option C (Amended Option 5)

	Capacity	2010	2015	2020
Barton	1092			
Enrolment		871	1,186	1,124
Utilization		80%	109%	103%
New School	1000			
Enrolment		-	1,014	964
Utilization		-	101%	96%
Sir Allan MacNab	1413			
Enrolment		867	1,204	1,099
Utilization		61%	85%	78%
Cluster Utilization		72%	96%	91%

Closure of Hill Park, Mountain, Sherwood
New School South East of Linc
Mountain Program to New School



ARC South - Possible School Sites

