

Secondary Pupil Accommodation Review Committee – North  
**North ARC Accommodation Option**  
Prepared by Board Administration

North ARC - Working Group Meeting #2  
February 1, 2011

## Why an Accommodation Review?

- **Program Benefits**
  - Larger enrolments provide greater options for students
    - Broader course selection
    - Flexible student timetables
    - More opportunities for all pathways
- **Financial Benefits**
  - Vast majority of grants are provided on a per pupil basis
    - School operations/ maintenance
  - Renewal

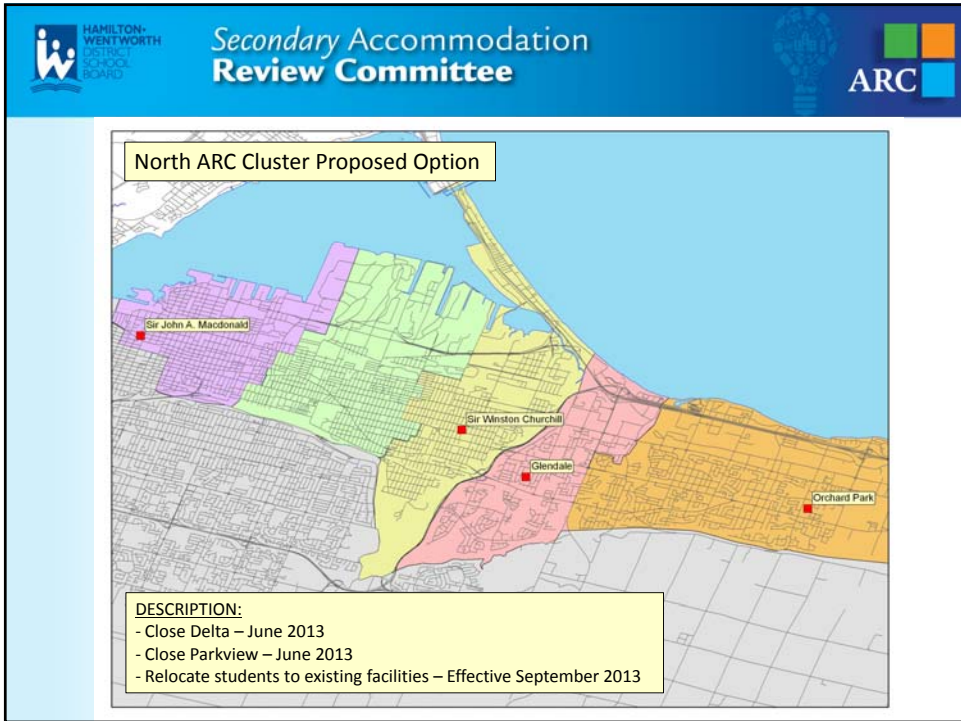
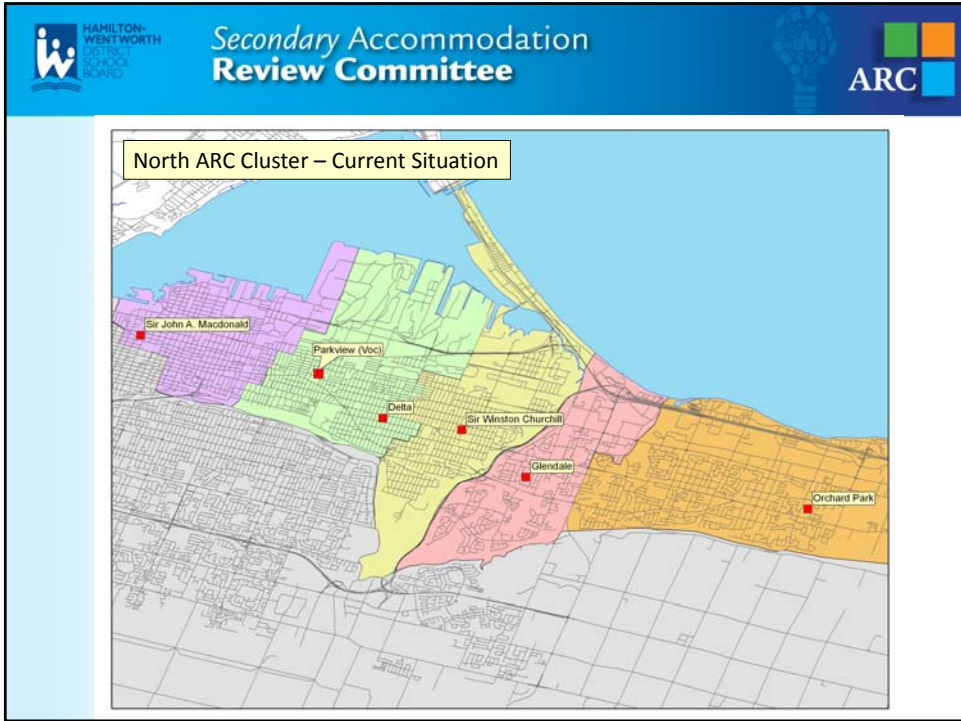
**Reference Criteria (as outlined in the Board policy):**

- a) Facility Utilization
- b) Permanent and Non-Permanent Accommodation
- c) Program Offerings
- d) Quality of Teaching and Learning Environments
- e) Transportation
- f) Partnerships
- g) Equity

**Current Situation:**

	2009 OTG	2009/10 (Enrolment/ Utilization)	2015/16 (Enrolment/ Utilization)	2020/21 (Enrolment/ Utilization)	Current FCI	10 YR FCI
Delta	1,431	825 (56%)	640 (44%)	640 (44%)	22%	57%
Glendale	1,122	926 (82%)	870 (77%)	800 (71%)	18%	38%
Orchard Park	1,290	1,179 (89%)	1,106 (84%)	1,141 (86%)	21%	37%
Parkview	534	274 (50%)	243 (45%)	228 (42%)	33%	53%
Sir John A. Macdonald	1,569	1,115 (69%)	775 (48%)	730 (45%)	41%	55%
Sir Winston Churchill	1,089	1,186 (103%)	999 (86%)	807 (70%)	32%	49%
<b>TOTAL</b>	<b>7,035</b>	<b>5,505 (76%)</b>	<b>4,633 (64%)</b>	<b>4,346 (60%)</b>		

OTG: On-The-Ground Capacity  
FCI: Facility Condition Index



Proposed Option:

	Current Situation				Proposed Option			
	2009 OTG	2013/14 (Enrolment/Utilization)	2015/16 (Enrolment/Utilization)	2020/21 (Enrolment/Utilization)	2013 OTG	2013/14 (Enrolment/Utilization)	2015/16 (Enrolment/Utilization)	2020/21 (Enrolment/Utilization)
Delta	1,431	694 (49%)	640 (44%)	640 (44%)	-	-	-	-
Glendale	1,122	877 (78%)	870 (77%)	800 (71%)	1,122	1,157 (103%)	1,123 (100%)	1,009 (90%)
Orchard Park	1,290	1,069 (83%)	1,106 (84%)	1,141 (86%)	1,290	1,080 (84%)	1,117 (86%)	1,151 (89%)
Parkview	534	251 (47%)	243 (45%)	228 (42%)	-	-	-	-
Sir John A. Macdonald	1,569	908 (58%)	775 (48%)	730 (45%)	1,569	1,452 (93%)	1,283 (82%)	1,230 (78%)
Sir Winston Churchill	1,089	1,118 (103%)	999 (86%)	807 (70%)	1,089	1,228 (113%)	1,111 (102%)	956 (88%)
<b>TOTAL</b>	<b>7,035</b>	<b>4,917 (70%)</b>	<b>4,633 (64%)</b>	<b>4,346 (60%)</b>	<b>5,073</b>	<b>4,917 (97%)</b>	<b>4,633 (91%)</b>	<b>4,346 (86%)</b>

Utilization for the proposed option is calculated using On-The-Ground (OTG) capacity

- Reinvest in remaining facilities to enhance program and learning environments
- Funding required to renovate and/ or upgrade the remaining facilities will be addressed through:
  - Proceeds of disposition from the sale of the Delta and Parkview school sites
  - Redirection of current renewal funding to fewer facilities

### Summary of Option

- Close Delta and Parkview in June 2013
- Relocate students to existing facilities in September 2013
- Stabilizes long-term enrolments at the remaining facilities
  - Increases the overall utilization rate for these schools from 60% to 86% by year 10
  - Provides opportunities for enhanced programming
- Results in a positive impact on the long-term maintenance, operational and renewal costs of the Board
- Includes upgrades and/or renovations to existing facilities to enhance program and learning environments
  - To be funded primarily through the proceeds of disposition