

Secondary Pupil Accommodation Review Committee

Demographic and Enrolment Trends

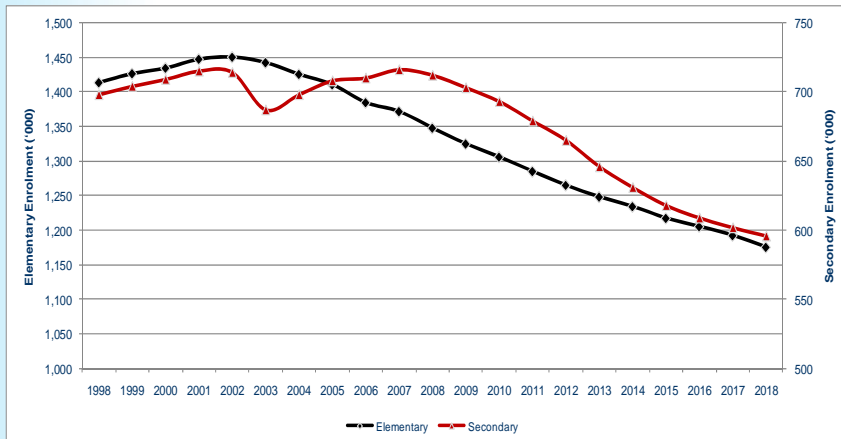
South ARC Working Group Meeting #3
March 8, 2011

Provincial Perspectives

- After peaking in 2002, elementary enrolment declined by approximately 5% or 80,000 by 2007
- Between 2007 and 2018, Province-wide elementary enrolment is projected to decline by an additional 14% or 197,000 students
- Between 1998 and 2007 secondary enrolment increased by 3% or 18,000 students
- Province-wide secondary enrolment is projected to decline by 17% or approximately 120,000 students by 2018

Provincial Perspectives

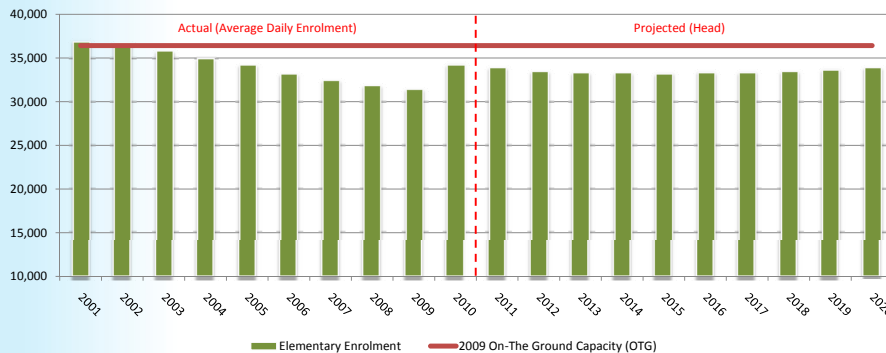
Historical and Projected Elementary and Secondary Enrolment



Historical and projected totals are calculated using Average Daily Enrolment (ADE)
Source: Watson & Associates Economists Ltd.

HWDSB Perspective

Historical and Projected Elementary Enrolment

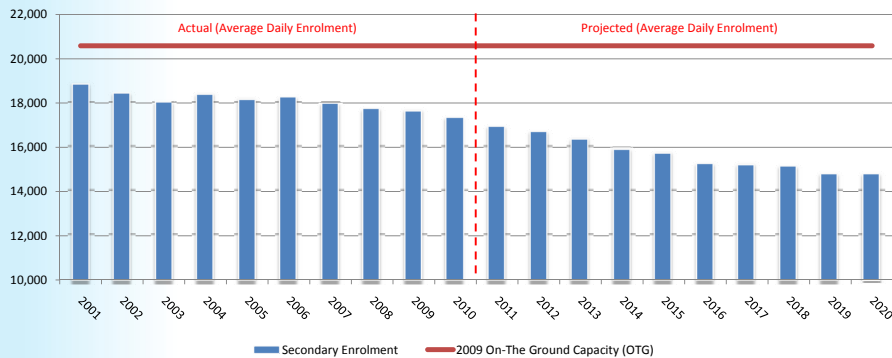


- Between 2001 and 2009 elementary enrolment decreased by 5,543 students or 15%
- Long-term projections indicate that enrolment will decrease by an additional 413 students by 2020
- The impact of this future enrolment trend will result in approximately 2,500 surplus pupil places

NOTE: Projections assume the full implementation of ELP in the 2010 school year
SOURCE: HWDSB, Planning Department

HWDSB Perspective

Historical and Projected Secondary Enrolment



- Between 2001 and 2009 secondary enrolment decreased by 1,210 students or 6%
- Long-term projections indicate that enrolment will decrease by an additional 2,523 students or 15% by 2020
- The impact of this future enrolment trend will result in approximately 5,800 surplus pupil places

SOURCE: HWDSB, Planning Department

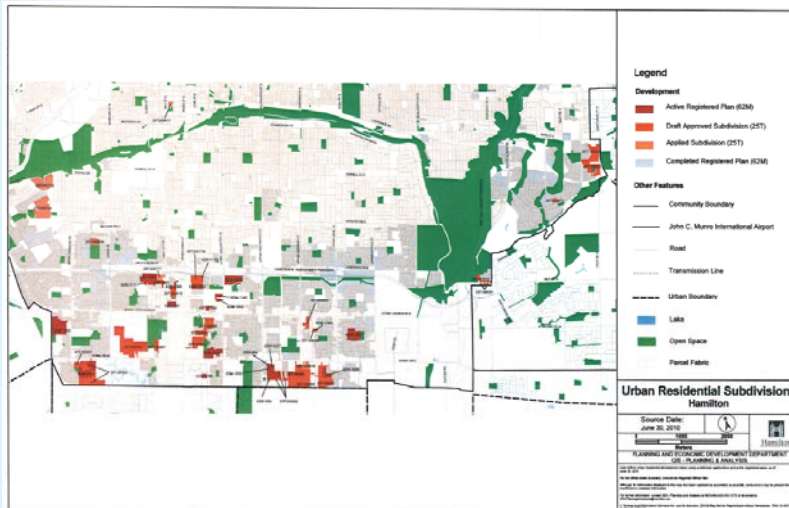
Components of Enrolment Projections

- **Historical Enrolment Data**
 - Hamilton Wentworth District School Board (HWDSB) historical enrolment data by-grade, by-school
 - Historical enrolment from co-terminous boards
- **JK Enrolment**
 - Watson & Associates Economists Ltd. (W&A) in-house demographer develops single year of age projection by region/ municipality
 - Statistics Canada custom tabulation summarizes the population for each Census Tract by age (for 1996, 2001 and 2006)
- **Development Information**
 - Most recent, municipally approved development forecast
 - Units in the development approval process
 - Discussions with municipal planning staff (Summer 2010)
- **Develop Elementary and Secondary Yields**
- **Apportionment Rates**

Demographic and Housing Trends

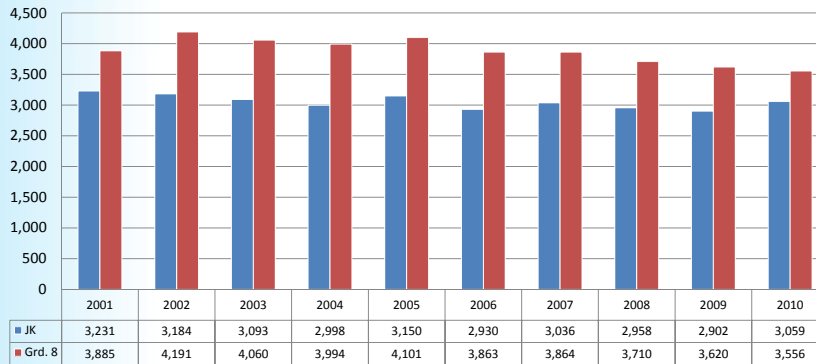
- **New Housing Units**
 - 10,500 (approx.) new housing units constructed between 1996 and 2001
 - 6,200 (approx.) new housing units constructed between 2001 and 2006
- **Elementary School Age Population**
 - Between 2001 and 2006 the elementary school age population per household decreased throughout the jurisdiction of the HWDSB
 - Most notable decreases in former Townships of Dundas, Glanbrook and the City of Hamilton
- **Secondary School Age Population**
 - Between 2001 and 2006 the secondary school age population per household remained stable throughout the jurisdiction of the HWDSB
 - Largest increase experienced in former Township of Ancaster
 - Decreases in former Townships of Ancaster, Glanbrook and City of Stoney Creek
- **Birth Data and Fertility Rates**
 - The number of live births between 2001 – 2007 decreased from 5,291 to 5,081
 - Between 2005 – 2007 fertility rates decreased slightly from 1.372 to 1.368
 - Females between the ages of 30-34 accounted for 34% of the total live births in 2007

Development Plans



SOURCE: City of Hamilton, Planning and Economic Development Department

JK Enrolment Trends



In 2001 the difference in the number of graduating grade 8 students and the incoming junior kindergarten students was 654. Since that time the difference between the two classes has decreased to 497, however there are still a larger number of students leaving the system compared to the incoming junior kindergarten class sizes. Under these circumstances, elementary enrolment at the Board is projected to continue to decline in the short-term prior to stabilizing in the long-term. This decline at the elementary panel will continue to carry through to the secondary panel.

SOURCE: HWDSB, Planning Department

Apportionment Rates

Elementary Apportionment

HWDSB Elementary Students						
2004/2005	2005/2006	2006/2007	2007/2008	2008/2009	2009/2010	Change
34,999	34,242	33,109	32,444	31,884	31,372	-3,627
65.3%	65.1%	64.7%	64.6%	64.5%	64.5%	0.8%

HWDCSB Elementary Students						
2004/2005	2005/2006	2006/2007	2007/2008	2008/2009	2009/2010	Change
18,638	18,351	18,034	17,794	17,496	17,295	-1,343
34.7%	34.9%	35.3%	35.4%	35.5%	35.5%	0.8%

Secondary Apportionment

HWDSB Secondary Students						
2004/2005	2005/2006	2006/2007	2007/2008	2008/2009	2009/2010	Change
18,233	17,977	18,091	17,877	17,648	17,582	-651
66.0%	64.9%	64.4%	63.8%	63.2%	62.4%	-3.6%

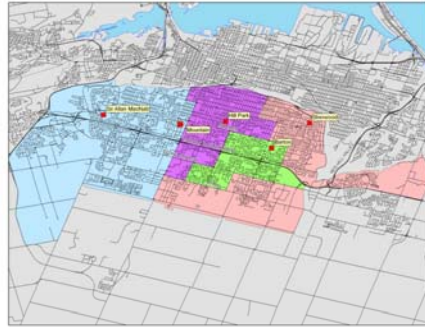
HWDCSB Secondary Students						
2004/2005	2005/2006	2006/2007	2007/2008	2008/2009	2009/2010	Change
9,398	9,710	9,985	10,136	10,270	10,598	1,200
34.0%	35.1%	35.6%	36.2%	36.8%	37.6%	3.6%

Factors influencing apportionment levels at the HWDSB include:

- Open access (secondary only)
- New school facilities or program offerings
- Ability to service rural communities

SOURCE: Ministry of Education, School Board Funding Projections for the 2010-11 School Year (Spring 2010)

South ARC Cluster of Schools



Development and Yield Information (1996 – 2006):

- 6,489 new units constructed (Avg. 649 units/ year)
- Elementary yield remained stable at 0.38
- Secondary yield increased from 0.14 to 0.18

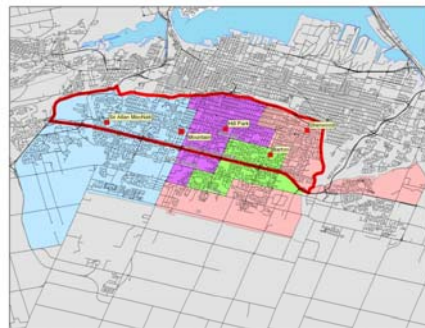
General Observations:

- The bulk of the population growth experienced in this cluster is located south of the Lincoln Alexander Parkway
- The majority of new (low density) development is projected for the area south of the Lincoln Alexander Parkway

Age	1996 Census Population	2001 Census Population	2006 Census Population	Change 1996 - 2001	% Change 1996 - 2001	Change 2001 - 2006	% Change 2001 - 2006
0 – 3 Pre-School Aged	7,425	6,657	7,135	-768	-10%	478	7%
4 – 13 Elementary School-Aged	19,997	20,591	21,363	614	3%	772	4%
14 – 17 Secondary School-Aged	7,160	8,498	9,853	1,338	19%	1,355	16%

Source: Statistics Canada, 1996, 2001 and 2006 Census Profile Data

South ARC Cluster of Schools (North of the Lincoln Alexander Parkway)



Development and Yield Information (1996 – 2006):

- 950 new units constructed (Avg. 95 units/ year)
- Elementary yield decreased from 0.31 to 0.28
- Secondary yield increased from 0.12 to 0.13

General Observations:

- Intensification accounts for the majority of new development scheduled for this area
- There has been a noticeable decline in the number of pre-school and school aged children in this area between 2001 and 2006
- Moving forward this decline will impact secondary enrolment projections

Age	1996 Census Population	2001 Census Population	2006 Census Population	Change 1996 - 2001	% Change 1996 - 2001	Change 2001 - 2006	% Change 2001 - 2006
0 – 3 Pre-School Aged	4,330	3,720	3,610	-610	-14%	-110	-3%
4 – 13 Elementary School-Aged	10,880	10,950	9,980	70	0.6%	-970	-9%
14 – 17 Secondary School-Aged	4,220	4,570	4,670	350	8%	100	2%

Source: Statistics Canada, 1996, 2001 and 2006 Census Profile Data

Summary

Projection Methodology

- There are a number of variables that are factored into the creation of enrolment projections
- Projections are not an exact science
- When reviewing enrolment projections the focus should be on the long-term trends as opposed to the exact numbers

Provincial Perspective

- Elementary enrolment peaked in 2002, with secondary enrolment peaking several years later
- There are still areas of growth throughout the Province but not enough to offset the decline being experienced in maturing communities

HWDSB Perspective

- Elementary enrolment decreased by approximately 5,500 students between 2001 and 2009
- During the same time period, enrolment at the secondary panel decreased by 1,200 students
- The decline experienced at the elementary panel continues to impact secondary enrolments