

Legend

Development

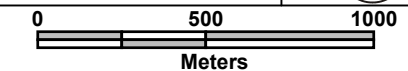
- Active Registered Plan (62M)
- Draft Approved Subdivision (25T)
- Applied Subdivision (25T)
- Completed Registered Plan (62M)

Other Features

- Community Boundary
- John C. Munro International Airport
- Road
- Transmission Line
- Urban Boundary
- Lake
- Open Space
- Parcel Fabric

Urban Residential Subdivisions Dundas

Source Date:
December 31, 2010



PLANNING AND ECONOMIC DEVELOPMENT DEPARTMENT
GIS - PLANNING & ANALYSIS

Data reflects urban residential development status using subdivision applications and active registered plans, as of December 31, 2010.

For the official urban boundary, consult the Regional Official Plan.

Although the information displayed in this map has been captured as accurately as possible, some errors may be present due to insufficient or outdated information.

For further information, contact GIS - Planning and Analysis at 905-546-2424 Ext 1272 or by email at: GIS-Planning&Analysis@hamilton.ca

© Teranel Land Information Services Inc. and its licensors. [2010] May Not be Reproduced without Permission. THIS IS NOT A PLAN OF SURVEY

Dundas Urban Residential Developments as of December 31, 2010

| Subdivisions By Dwelling Type | | | | | | |
|---|------|-----------------|---------------|-----------|-----------|----------|
| Number | Name | Single Detached | Semi-Detached | Townhouse | Apartment | Total |
| Pending | | | | | | |
| No Plans | | 0 | 0 | 0 | 0 | 0 |
| Total Pending Subdivision Units | | 0 | 0 | 0 | 0 | 0 |
| Draft Approved | | | | | | |
| No Plans | | 0 | 0 | 0 | 0 | 0 |
| Total Draft Approved Subdivision Units | | 0 | 0 | 0 | 0 | 0 |
| Total Subdivision Units | | 0 | 0 | 0 | 0 | 0 |

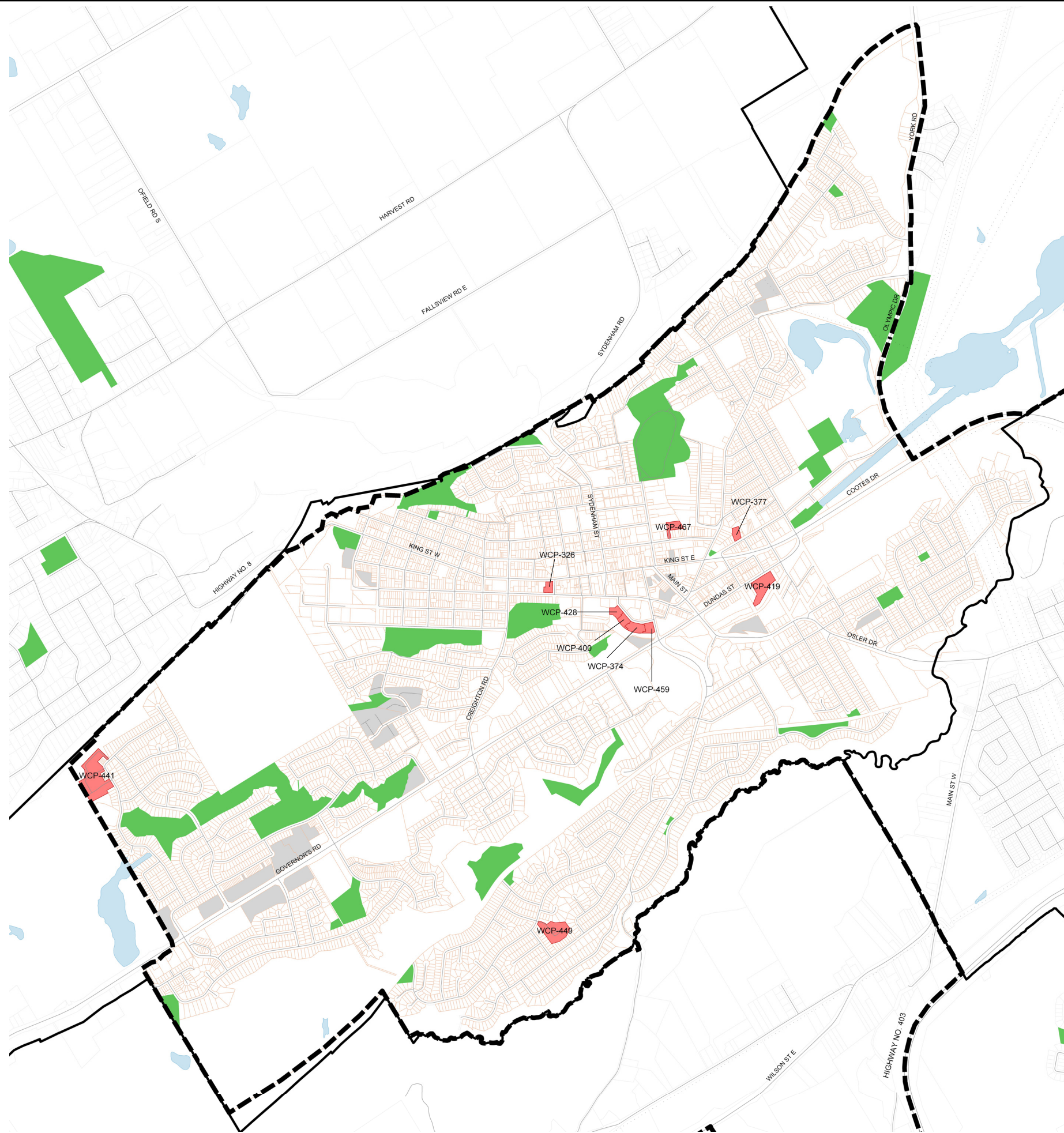
Source: GIS - Planning and Analysis, Planning and Economic Development Department, City of Hamilton

Note: These numbers represent the total number of units in the above pending subdivisions and may include those units already under construction.

| Active Registered Plans By Dwelling Type | | | | | | |
|---|--------------------------|-----------------|---------------|-----------|------------|------------|
| Number | Name | Single Detached | Semi-Detached | Townhouse | Apartment | Total |
| 62M-849 | Grand View Estates, Ph.2 | 28 | 0 | 0 | 0 | 28 |
| 62M-963 | Spencer Creek Village | 0 | 0 | 0 | 236 | 236 |
| 62M-1104 | Pleasant Valley | 9 | 0 | 0 | 0 | 9 |
| Total Active Registered Plan Units | | 37 | 0 | 0 | 236 | 273 |

Source: GIS - Planning and Analysis, Planning and Economic Development Department, City of Hamilton

Note: These numbers represent the total number of units in the above registered plans and may include those units already under construction.



Legend

Development

- Wentworth Condominium Plan (WCP) 2001 - 2010
- Draft Approved Condominium (25CDM) 2001 - 2010
- Condominium Application (25CDM) 2001 - 2010
- Wentworth Condominium Plan (WCP) Prior to 2001

Other Features

- Community Boundary
- John C. Munro International Airport
- Road
- Transmission Line
- Urban Boundary
- Lake
- Open Space
- Parcel Fabric

Urban Residential Condominiums Dundas

| | | |
|-----------------------------------|--|--|
| Source Date: December 31, 2010 | | |
| | | |

PLANNING AND ECONOMIC DEVELOPMENT DEPARTMENT
GIS - PLANNING & ANALYSIS

Data shown reflects urban residential development status using condominium applications and registered condominium plans from January 1, 2001 to December 31, 2010. Condominium plans registered prior to 2001 are shown only if they have been captured in the GIS layer.

For the official urban boundary, consult the Regional Official Plan.

Although the information displayed in this map has been captured as accurately as possible, some errors may be present due to insufficient or outdated information.

For further information, contact GIS - Planning and Analysis at 905-546-2424 Ext 1272 or by email at: GIS-Planning&Analysis@hamilton.ca

© Teranet Land Information Services Inc. and its licensors. [2010] May Not be Reproduced without Permission. THIS IS NOT A PLAN OF SURVEY

Dundas Urban Residential Developments as of December 31, 2010

| Condominiums By Dwelling Type | | | | | | |
|---|------|-----------------|---------------|-----------|-----------|----------|
| Number | Name | Single Detached | Semi-Detached | Townhouse | Apartment | Total |
| Pending | | | | | | |
| No Plans | | 0 | 0 | 0 | 0 | 0 |
| Total Pending Condominium Units | | 0 | 0 | 0 | 0 | 0 |
| Draft Approved | | | | | | |
| No Plans | | 0 | 0 | 0 | 0 | 0 |
| Total Draft Approved Condominium Units | | 0 | 0 | 0 | 0 | 0 |
| Total Condominium Units | | 0 | 0 | 0 | 0 | 0 |

Source: GIS - Planning and Analysis, Planning and Economic Development Department, City of Hamilton

| Recent Wentworth Condominium Plans By Dwelling Type | | | | | | |
|--|-----------------------------|-----------------|---------------|------------|------------|------------|
| Number | Name | Single Detached | Semi-Detached | Townhouse | Apartment | Total |
| WCP-326 | Dundas Square | 0 | 0 | 0 | 48 | 48 |
| WCP-374 | Spencer Creek, Ph.1 | 0 | 0 | 0 | 62 | 62 |
| WCP-377 | 79 King St East* | 0 | 0 | 0 | 15 | 15 |
| WCP-400 | Spencer Creek, Ph.2 | 0 | 0 | 0 | 62 | 62 |
| WCP-419 | Spencer Green Village | 0 | 0 | 33 | 0 | 33 |
| WCP-428 | 4000 Creekside Drive | 0 | 0 | 0 | 62 | 62 |
| WCP-441 | Valley Heights, Ph.1-3 | 0 | 0 | 68 | 0 | 68 |
| WCP-449 | Pleasant Valley | 19 | 0 | 0 | 0 | 19 |
| WCP-459 | Spencer Creek Village, Ph.4 | 0 | 0 | 0 | 62 | 62 |
| WCP-467 | 17 1/2 Park Street East | 5 | 0 | 0 | 0 | 5 |
| Total Recent Wentworth Condominium Plan Units | | 24 | 0 | 101 | 311 | 436 |

* condominium name based on address location

Source: GIS - Planning and Analysis, Planning and Economic Development Department, City of Hamilton