

HWDSB

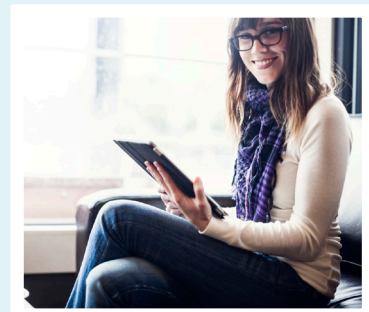


New North Secondary School

HWDSB's new North Secondary School will be located at 1055 King Street East (former Scott Park Secondary School site). This beautifully designed secondary school will be constructed to meet the needs of students, while complementing in the adjacent Tim Hortons Field, Jimmy Thompson pool and the new City of Hamilton Bernie Morelli Recreation Centre.

The downtown location allows for a flexible design. It will accommodate 1,250 pupils in approximately 160,000 square foot secondary school with surrounding amenities. The preliminary site design includes a three-storey secondary school, green space and a unique partnership with the City of Hamilton that provides state-of-the-art physical education opportunities for our students.

The future secondary school of those living in the Sir John A. Macdonald and Delta catchment areas will be a state of the art facility to meet every student's needs.

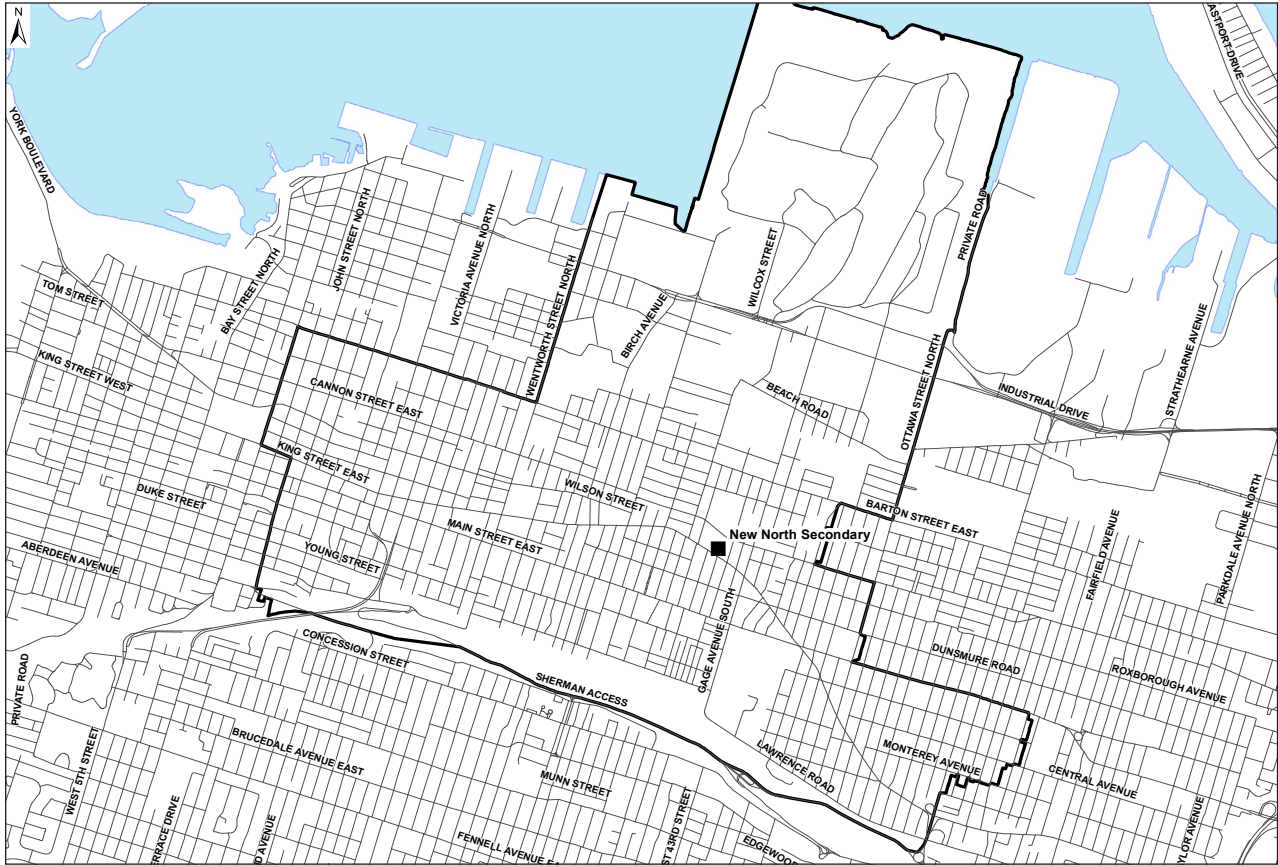


Features:

- Approximately 160,000 square foot three-storey school
- Capacity for 1,250 students
- Houses students in grades 9 to 12
- Two-storey cafeteria and drama room
- Shared open space with community centre

curiosity • **creativity** • **possibility**

New North Secondary School



Overview of Project Phases:

