



**Ancaster Accommodation Review
Working Group Meeting #5
Thursday March 2, 2017
6:00 pm**

**Fessenden
168 Huron Avenue
Ancaster, Ontario**

Agenda

1. Fessenden & Ancaster Senior Tour
2. Standing Items
 - a. Confirmation of Working Group Meeting #4 Minutes
 - b. Correspondence
 - c. Info Requests
3. Meeting Duration
4. Accommodation Option - Discussion
5. Public Meeting #2 - Discussion
6. Next Steps

Received – February 13, 2017

1. ASPS - # of parking spaces. School profile indicates 85 spots. Is this correct?

Yes, there are 85 spaces associated with this site.

2. Fessenden - # of parking spaces. School profile indicates 22. Is this correct? Please clarify where the lot lines is between Fessenden & ASPS.

Yes, there is 22 spaces on this site. There is no lot line between Fessenden and Ancaster Senior.

3. ASPS - property site size. School profile indicates 8.22 Acres. Is this correct?

The entire site is one parcel of land and is approximately 20.5 acres

8.23 is the estimated total of asphalt and grass play space associated with Ancaster Senior.

4. Fessenden - property site size. School profile indicates 5.09 Acres. Is this correct? The sum of 3 & 4 do not match the 20.5 Acre combined site size as specified in the Staff Initial Report. Please confirm which sizes are correct.

5.09 is the estimated total of asphalt and grass play space. The entire site is one parcel of land and is approximately 20.5 acres.

5. Queens Rangers - property size. School profile indicates .29 Acres. This should be corrected. Staff Initial Report states property size as 7.4 Acres. Please confirm this is the correct property size.

.29 is the estimated total of asphalt and grass play space. Did not include play space to west of school which is approx. 1.7 acres.

6. Thank you for breaking out utility cost for each school for the January 18th Agenda Package. Instead of a 2 year average, can the data be displayed separately per year. For example, 2014/2015 as well as 2015/2016 and lastly as 2016/2017 in year-to-date format. The data that is of particular interest at this point in time is electricity line items, as well as water line items. Can we get the water data displayed in volume of water used, say in cubic meters, rather than dollars?

7. FI Student Distribution. Can the group receive a new map similar to the map received on January 18th Agenda Package? However, this time map out student distribution density. For example, a much larger circle planted in areas where there is a high participation rate in FI, rather than simple dots all of the same size.

The chart on the map give indicates the participation rate of FI students by English boundary.

8. Initial Report, Appendix C, School Feasibility Study by DPAI Inc.

This is a good report with clear locations & scope of work required to meet the Elementary Program Strategy benchmark requirements (I think this was the purpose).

However, I have concerns about the feasibility of carrying out the intended renovations for ASPs & Rousseau. This is Option B - Initial Option in the DPAI report. The addition "footprints" appear to have been simply placed at the end of each school with very little regard to servicing the additions (air circulation & conditioning, method of space heating, water & wastewater interconnections).

Does the board have any intentions to release funds to support a separate feasibility study that would investigate such items prior to staff completing a final report to trustees on or about June 5, 2017?

No, the Board does not allocate additional funding for additional feasibility studies.

Received February 21, 2017

1. Currently, Fessenden School and Ancaster Senior Public School both sit on the same property owned by the HWDSB.

Yes.

2. Currently there is no "lot line" that has ever been surveyed to differentiate one school property parcel from the other.

Correct.

3. When trustees vote to close a school, does the school use change instantaneously? For example, does the use automatically change to "primarily storage & maintenance purposes" or "administrative purposes"? For purposes of the Ancaster Accommodation Review, when will pupil accommodation cease to exist at schools slated for closure?

If the Board of Trustees approve to close a school, it will continue to function as a school until the preparations for student accommodations are complete at the receiving HWDSB site. Example: if a two schools are approved to be closed and consolidated together into one school site then both schools would remain open and operating until new school is constructed or renovations are complete on the identified school site. Schools may close earlier if the existing building needs to be removed in order to build a new school on that site.

4. Does HWDSB have a process or policy that describes how a school transitions from accommodating pupils to becoming surplus real property?

Surplus properties are identified through long-term capital planning and accommodation reviews. Once a school has been approved for closure and a community's long term student accommodation needs are met, staff will provide a report to Board identifying the property and request the property be declared surplus. Following the adoption of a Board resolution declaring property surplus to the Board's needs, Ontario Regulation 444/98 is engaged.

For more information, please see Property Disposition Protocol Hamilton-Wentworth District School Board:

<http://www.hwdsb.on.ca/wp-content/uploads/2013/06/Property-Disposition-Protocol.pdf>

5. When a school board comes to a resolution to sever a board property, are there any regulations under the Education Act or Development Charges Act that require Public Meetings to be held so the community can voice their concerns? Does O.Reg. 444/98 apply when a land severance is considered?

When a land severance occurs there is no requirement for a public meeting. Severance does require Trustees approval at Board. A report is submitted to trustees when staff propose a land severance.

Land severance procedure must follow the City of Hamilton's Consent to Sever Land process. Application information and City of Hamilton requirements can be found here:

<https://www.hamilton.ca/develop-property/planning-applications/consent-sever-land>

When selling a surplus property HWDSB does hold a public meeting as per the Property Disposition Procedure:

<http://www.hwdsb.on.ca/wp-content/uploads/2012/05/Property-Disposition-Procedure.pdf>

HWDSB administration will hold a public information session within the first 60 days of the 180-day circulation period to inform the local community of the Board's intent and the requirements of Ontario Regulation 444/98 when disposing of surplus property. The public information session provides a key communication service for the local community.

6. O.Reg. 444/98 comes into play when a school board comes to a resolution to dispose of surplus real property. Has this regulation experienced any changes since August 31, 2016? If so, can the board describe the significant changes to the Working Group?

The following amendments were made to O. Reg. 444/98:

1. Extending the current surplus school circulation period from 90 days to 180 days, providing listed public entities with 90 days to express interest in the property and an additional 90 days to submit an offer;
2. Expanding the list of public entities to receive notification of surplus school property disposition;

3. Requiring all board-to-board sales to be at fair market value;
4. Introducing a maximum rate a school board can charge for leasing a school to another board;
5. Providing a school board with a leasehold interest in a surplus school property being circulated to have the highest priority ranking of all listed entities;
6. Ensuring that private education providers are not eligible to lease surplus property unless the property has first been circulated to listed public entities.

For more information, please see SB16 Memo: Amendments to Ontario Regulation 444/98-Disposition of Surplus Real Property: https://efis.fma.csc.gov.on.ca/faab/Memos/SB2016/SB16_EN.pdf

February 14, 2017

Dear Ancaster Accommodation Review Committee:

I am writing this letter to provide comments and input into the Accommodation Review Committee for Ancaster. My intent for this letter is to provide additional comments to the Committee for consideration as they seek a preferred alternative and develop further refinements to the plan. Generally I support the proposed alternative.

Condition of CH Bray

When my daughter was in grade 2 they became pen pals with students at Meadow School. This experience culminated with a class trip to Meadow at the end of the year to meet their pen pals. After this experience my daughter became very confused as to the condition of her school, which she had previously not even considered. She was excited with the common learning spaces at Meadow and how they didn't have to eat lunch at their desks and had extra space to go and use the computers and wanted to know why her school didn't have anything like that. What shocked me most was her excitement over Meadow having soap dispensers and sinks that worked. What kind of school environment do we have where a student is excited over working sinks and soap dispensers? This tells me that the expectation is that things are usually broken and worn out. How do you explain to your kids that they don't get those things at their school? My son constantly complains about the cleanliness of the washrooms. I understand school washrooms aren't always the best due to questionable hygiene habits of the users but there are only 5-6 stalls in the boys washroom for a school population of over 300 kids (assume 50% boys). Even in a workplace those washrooms would get pretty dirty with such high useage.

Due to a recent school gym roof leak I was Googling publically available condition information for CH Bray. My concern was related to possible asbestos in the gym roof. In previous years when ceiling tiles were damaged/knocked down in the YMCA after care program, the students were immediately removed from the gym and it was closed due to what we understood were Asbestos concerns. I was attempting to determine if these closures in other years was based on evidence of asbestos or an abundance of caution by staff. I understand know that it is the latter but also understand from other parents that Asbestos is one reason the school couldn't be wired for Network in the past and assume this has impacted other possible upgrades students have not been able to enjoy.

During this Google search I found a memorandum dated October 31, 2006 from the Ministry of Education Titled "Prohibitive to Repair – School Options". Reading this document made me incredibly frustrated as a parent as I understand that funding has been available at the Provincial level for nearly 11 YEARS(!) to address the condition of CH Bray.

The memorandum provided rankings of schools throughout Ontario based on standardized a Facility condition Index (FCI). The FCI was considered two ways, one as FCI by OTG (On-The Ground) and FCI by GFA (Gross Floor Area) with the results presented in percentages. At the time the Ministry defined schools with an FCI greater than 65% as Prohibitive to Repair.

Hamilton-Wentworth District School Board (21)					
297	C H Bray PS	Ancaster	E	127.70%	111.29%
8038	Central	Hamilton	E		71.33%
8042	Dalewood	Hamilton	E	84.99%	
8029	Linden Park	Hamilton	E	70.24%	
8062	Prince Philip	Hamilton	E	65.06%	
8075	Sanford Avenue	Hamilton	E	85.90%	
Hastinas and Prince Edward District School Board (29)					

CH Bray scored a shocking 127.7% and 111.29% respectively and far exceeded any other school in the HWDSB. Only one school in the entire list of 134 schools, province wide, had a similar score of 118.94% and 135.87%. Out of the 134 schools listed in this document CH BRAY could be considered THE WORST SCHOOL in the entire province for Capital needs. The other HWDSB Schools on this list have all been addressed [Central (unknown), Dalewood (Renovated 2015), Linden Park (Closed May 2015), Prince Philip (Closed 2014) and Sanford Avenue (Closed 2010)].

My concern is why has it taken an additional 11 YEARS to address this matter and a further 3+ years before substantial changes are made given the implementation schedule of 2020. I firmly believe that the board has thoroughly failed the students of Ancaster, and more specifically CH Bray. Students of CH Bray and Rousseau will spend their entire elementary education in schools that are deemed "Poor". It doesn't get any better when they move on to Senior Public which is also "Poor". Things don't improve at Ancaster High which is only labeled as "Fair".

HWDSB Section 3: Facility Condition Index

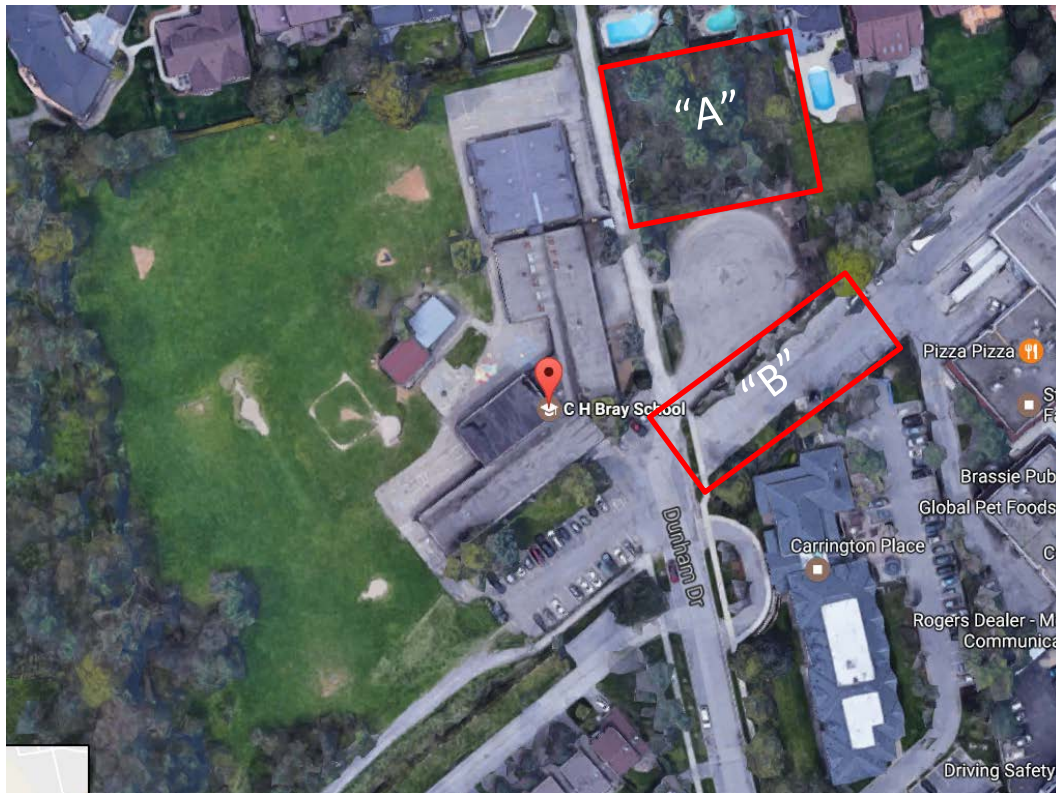
<p>Fair (41-64%)</p> <p>Facilities will look worn with apparent and increasing deterioration</p> <p>Potential frequent component and equipment failure may occur.</p> <p>The facility will be at a competitive disadvantage and enrolment could be impacted</p>	<p>A. M. Cunningham Ancaster High Billy Green Buchanan Park Collegiate Avenue Earl Kitchener Eastdale Fessenden George L. Armstrong Glen Brae Glendale Glenwood (Formerly Fairview) Green Acres Huntington Park James Macdonald Lake Avenue</p> <p>Lincoln M. Alexander Lisgar Memorial (Stoney Creek) Mountain Secondary Mountain View Mountview Norwood Park Queensdale R A Riddell R. L. Hyslop Richard Beasley Ridgemount Rosedale Sir Winston Churchill SS Strathcona Tapleystown Viscount Montgomery</p>
<p>Poor (65% +)</p> <p>Facilities will look worn with Obvious deterioration</p> <p>Equipment failure in critical items more frequent. Occasional building shut down could occur. Management risk is high</p> <p>The facility will be at a competitive disadvantage and will be at a high risk of enrolment shortfall</p>	<p>Adelaide Hoodless Ancaster Senior C H Bray Cardinal Heights Cecil B. Stirling Dundana Dundas Central Ecole Elementaire Michaele Jean Elizabeth Bagshaw Glen Echo</p> <p>Highview Mary Hopkins Memorial (Hamilton) Mount Albion Parkdale Rousseau Sherwood SS W. H. Ballard Westdale Westmount SS Yorkview</p>

I think that in whatever implementation strategy occurs that the students of CH Bray cannot wait any longer and **any plan must address the total replacement of this school as the first and highest priority step of the ARC**. I fully support the complete replacement of CH Bray with a new modern learning environment.

Comments for Consideration:

The current CH Bray Location has many advantages, it is central in the community it serves and the treed surroundings provide shade and natural beauty to the playground. It is also has disadvantages including the lack of traffic congestion and awkward bus area. There is a lack of parking for events and access to Dunham is nearly impossible when Hwy 403 is backed up as most of Ancaster is congested with no alternative routes.

I suggest that the committee look at increasing the overall land holdings for CH Bray to permit improved traffic circulation including the bus turnaround. It is not clear from the available information what the ownership of the Bus turnaround is (municipal, or if it is designated as Roadway). Dunham Drive should have a proper, municipal street cul-de-sac termination to permit the removal of snow and also emergency services vehicles. The committee should consider investigating ownership of the adjoining treed parcel (Labelled "A") that abuts the turnaround and also investigate if property could be purchased from the commercial plaza (Labelled "B"). It is very rare to see plaza vehicles parked in this location and it is most often CH Bray parents parking there for school events. This would take an abandoned closed off section of unused parking lot and turn it towards Dunham Drive and integrate it into the community. This might be a complex solution given the commercial property owners but given the legacy of building a new school the focus should be on getting it right and additional property could permit a reconfigured Dunham termination and improved traffic flow at the bottom while also allowing for the ideal location of the school, playground and ensuring local multi use trail connections are maintained.



Ancaster High Alternative

This alternative location for a new CH Bray would impact the soccer community as well as impact residences that currently back onto the greenspace. There might be a broad community concern about the loss of this greenspace. An Entrance would be available from Taylor Rd. and a school in this location would permit a fresh 'greenfield' modern school with less Constrains than the existing CH Bray location. Alternatively the school could be oriented towards Meadowbrook with an Entrance opposite Tranquility. Access from Meadowbrook would allow an alternative access for school buses when Wilson Street is congested by using Jerseyville Road. The relocation of CH Bray to Ancaster High Location might also minimally reduce travel times for students from the former Queens Rangers.

In London Ontario there was a setup similar to this with a Public Elementary, High School and Catholic Public School all built on essentially the same parcel of land (see Appendix A). The London School Board could provide insight into how the co-location of a highschool and elementary school work in practice if the committee chooses to pursue this alternative.

The Committee could also investigate a land swap and involve the city to build replacement soccer fields and a park at the former CH Bray location to offset the loss of the soccer fields.



JK-8 Schools

Having attended a JK – Gr 8 School I have no concerns with the model. I think it was helpful to have the grade 7-8's in the school to be role models for younger students and also the younger students can be a moderating influence on the older students. The play areas for the seniors were well separated much as the primary and junior groups are currently separated. We also got to experience rotation in the afternoons so got a taste of what high school could provide. I support the re-integration of the grade 7-8 program back into the local schools.

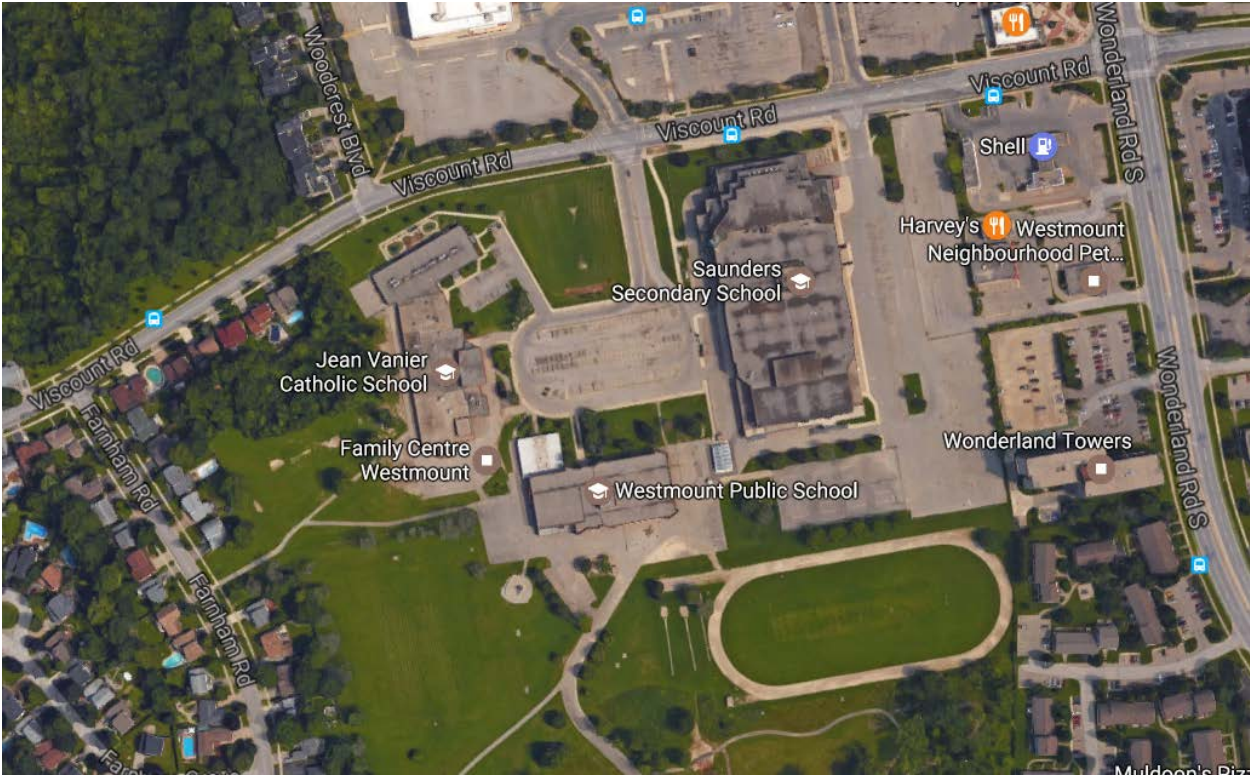
I hope that you will take these comments into consideration as you evaluate and develop the preferred alternative.

Thank you,

Dan Leake, P. Eng.

Appendix A:

Combined use property in London Ontario



Memorandum To: School Business Officials

From: Nancy Whynot
Director
Business Services Branch

Date: October 31, 2006

Subject: Prohibitive to Repair – School Options

As a follow-up to the June 12, 2006 B-Memorandum 2006:B8 regarding Education Funding, I am writing to provide you with further information regarding the options to address the renewal needs at facilities identified as candidates for Prohibitive to Repair (PTR).

OVERVIEW

The majority of schools in the Province of Ontario were constructed prior to 1970. School boards require money to repair and upgrade their schools to the current standards. On February 17, 2005, the Minister of Education announced the Good Places to Learn (GPL) initiative with a goal of investing \$280 million in annual funding to address school renewal and new school construction. It is anticipated that this funding will enable boards to undertake capital projects in their schools that are valued at almost \$4 billion.

In 2002-2003 the Ministry undertook an exercise to inspect every school in the province to assess the needs and priorities of repairs and to allocate funding to meet these demands. During this exercise, many schools were identified that were in poor condition. The Prohibitive-to-Repair (PTR) component of the GPL announcement will provide \$50 million annually to support approximately \$700M worth of new construction to replace schools in poor condition.

PTR schools are currently defined by a measure of building condition based on estimated costs of necessary repair work in a school and its replacement value. This is known as the Facility Condition Index (FCI), and is a building industry standard in calculating the facility condition. The Ministry had defined PTR schools as those having an FCI equal to or greater than 65%.

Facilities Considered PTR for GPL Stage 1

In 2005-06, the calculation for the allocation of GPL Stage 1 funding did not consider the high and urgent needs for 136 facilities with an FCI equal to or greater than 65% on the assumption that these schools were candidates for replacement rather than renewal investments. These schools are included on the Ministry identified PTR-candidate list (see *Step 1: Identification of PTR-Candidate Facilities* section 1.1 *Ministry Identification of PTR-Candidate Facilities* below).

PTR PROCESS OVERVIEW

Detailed in the following sections is the process to identify, categorize and prioritize PTR candidate facilities. This process includes:

Step 1: Identification of PTR-Candidate Facilities

- 1.1 Ministry Identified PTR-Candidate Facilities
- 1.2 Board Identification of PTR-Candidate Facilities
 - 1.2.1 Board to complete the *Board Identified PTR-Candidate Form*
 - 1.2.2 Board to complete *Preliminary Identification of PTR-Candidate Category Form*
- 1.3 Review and Finalize PTR-Candidate Inventory by Ministry

Step 2: Request for Business Case Submissions by Boards (details to follow in future SB Memo)

Step 3: Business case analysis and communication of preliminary approvals by Ministry (details to follow in future SB Memo)

STEP 1: IDENTIFICATION OF PTR-CANDIDATE FACILITIES

1.1 Ministry Identified PTR-Candidate Facilities

The facilities management consulting company, Physical Planning Technologies Incorporated (PPT), performed a detailed inspection of each school building and captured the results in the facilities management software ReCAPP.

ReCAPP is a tool designed to help boards identify renewal needs for the capital planning cycle. It also allows consistent reporting across the province with respect to school condition. As indicated in Memorandum 2005:B4, boards have access to their individual ReCAPP databases upon signing their licensing agreements with PPT. This access allows boards to update their school building condition assessment information developed from the inspections of all schools and will also assist boards in selecting projects and developing effective school renewal programs. As indicated in

Memorandum 2006:SB 18, in conjunction with the development of long-term capital plans, school boards are required to update their ReCAPP databases to reflect current renewal projects as well as aid in the planning process.

Based on these findings, the Ministry calculated the five-year renewal needs for each facility from 2002/03 to 2006/07.

Using this information, the Ministry has created a preliminary inventory of PTR candidate schools with a FCI of 65% or greater (see attached appendix). The Ministry used two approaches to determine the replacement value of a facility, and thereby calculate the FCI.

The first method used On-the-Ground (OTG) capacity of the school, which reflects only the number of student spaces in a school. Some boards have indicated that using OTG to measure school capacity has caused distortions in the FCI calculation. That is, schools with a greater proportion of special education classrooms or with unloaded spaces (such as gyms or libraries) were more likely to generate high FCI calculations because of an understatement of the replacement value. For this reason, the Ministry introduced a second method which uses the Gross Floor Area (GFA), which reflects the footprint of the school. All schools that have an FCI by OTG or an FCI by GFA equal to or greater than 65% were included on the Ministry identified PTR-candidate inventory.

1.2 Board Identification of PTR-Candidate Facilities

Some boards have indicated that the original school inspection excluded some aspects of school renewal needs, such as asbestos removal, Siporex roof replacement, or to address accessibility issues, which boards consider significant in their own determinations of the repair status of schools. The Ministry is providing boards with an opportunity to identify and add facilities and/or remove facilities indicated on the Ministry's potential PTR-candidates list. Boards may also identify a portion of a school as a potential PTR-candidate. This will enable boards to identify schools that have been constructed in phases and may have sections of a school that are in poor condition; although the whole school would not be considered PTR.

1.2.1 Board Identified PTR-Candidate Form

Boards have an opportunity to add or remove facilities from the Ministry identified PTR-candidate list. Boards must identify the school as a PTR-type program in their capital plan and submit a request to the Ministry to indicate their rationale to add facilities, add sections of facilities, or remove facilities from the Ministry identified PTR-candidate list by using the *Board Identified PTR-Candidate Form* (attached).

The rationale to add a facility, a section of a facility, or to remove a facility from the Ministry identified PTR-candidate list should indicate:

- The renewal needs not considered in the original assessment.
- The resulting FCI for the facility, if the proposed renewal needs were considered.

Boards may append supporting documentation including engineering analysis, photographs, reports, etc., where available.

1.2.2 Preliminary Identification of PTR-Candidate Category Form

All boards with facilities listed on either the Ministry identified PTR-Candidate list or the Board identified PTR-Candidate list must complete the *Preliminary Identification of PTR-Candidate Category Form* (attached).

PTR School Categories

The Ministry has classified PTR-candidate solutions into three categories as listed below.

Category 1: Single School Solutions

This category includes schools in poor condition that need to be replaced on the same or nearby site for the same intact school community. A near-by site is defined as a site that addresses the needs of at least 80% of the original student body impacted by the PTR school, resulting in similar walk distances and ride times.

Category 2: Multiple School Solutions

This category will provide a solution that involves more than one school in poor repair, where at least one of the schools is a PTR-candidate facility, and the other schools are in the neighbouring community

This category includes the following situations based on enrolment projections and capacity:

- Renovate or Add an Addition to a Neighbouring School
In situations where limited enrolment is projected for the PTR school and capacity is limited in the adjacent community, additional space can be built to a neighbouring school(s) to accommodate the pupil population of the PTR school.
- Build a New Consolidated School
In situations where enrolment projections indicate a need in the PTR and neighbouring school communities the proposal could be for a new consolidated school on the existing or nearby site.

Category 3: Solution to Retire Schools

This category will provide a solution that involves schools in poor repair where the affected students can be accommodated in existing schools with excess capacity within the current planning area. The PTR school does not need to be replaced, and can be retired from the school board's inventory. Some limited funding may be provided for this category of schools to address upgrade/renewal needs at the accepting school.

1.3 Review and Finalize PTR-Candidate Inventory

The Ministry is requesting boards to update the PTR candidate inventory of schools, and complete the Preliminary Identification of PTR-candidate category including the priority ranking by **November 30, 2006**. The information from boards will help the Ministry assess the number of schools in each category. This information will be considered as a staff-level submission from the board. The Ministry recognizes that after the municipal elections in November, boards will likely need to have discussions with and get approval from the new board of trustees.

The Ministry is planning to release a DRAFT SB memo to boards for comment regarding next steps for assessing PTR funding needs, including information on the required business case content. This should be released within the next two weeks.

Subsequently, boards will be required to submit business cases to outline the proposed plan for schools identified in the PTR-Candidate inventory as their highest priority(ies). Adjustments to the renewal needs and funding allocations for facilities which were added or removed will be made in GPL Stage 3 in 2007-08.

OTHER ASSISTANCE

Ministry staff are available to answer questions and provide support throughout this transition process. School boards are encouraged to contact staff if they require further clarification during any stage of this process.

For further clarification, please direct any questions to:

Dolly Anand, Policy Team Lead
Business Services Branch, Ministry of Education
(416) 325-2022, Dolly.Anand@Ontario.ca



Nancy Whynot
Director, Business Services Branch

c.c. Directors of Education
Superintendents of Plant
Superintendents of Planning

Appendix: Ministry Identified Prohibitive to Repair Candidate Facilities

SFIS	Facility Name	City/Town	Panel	FCI by OTG	FCI by GFA
Algoma District School Board (2)					
39	Alex Muir PS	Sault Ste. Marie	E	74.02%	84.42%
5203	Alexander Henry HS	Sault Ste. Marie	S	75.55%	65.95%
2930	Arthur Henderson - A PS	Bruce Mines	E		144.79%
271	Arthur Henderson PS	Bruce Mines	E	91.80%	127.27%
848	Francis H Clergue PS	Sault Ste. Marie	E		86.23%
1151	Iron Bridge PS	Iron Bridge	E		68.22%
5464	Korah C & VS	Sault Ste. Marie	S	76.77%	
2119	Spanish PS	Spanish	E		74.14%
2546	Wm Merrifield VC PS	Sault Ste. Marie	E	68.51%	81.28%
Algonguin and Lakeshore Catholic District School Board (55)					
9226	Holy Name of Mary Catholic School	Marysville	E	115.85%	66.33%
3455	J J O'Neill Catholic School/St Patrick Catholic School	Napanee	E	71.76%	
6528	Sacred Heart Catholic School, Wolfe Island	Wolfe Island	E	77.74%	74.09%
9225	Sacred Heart Catholic School, Batawa	Batawa	E	74.32%	73.61%
9229	Sacred Heart Catholic School, Marmora	Marmora	E	104.73%	90.81%
Avon Maitland District School Board (8)					
	No schools identified				
Bluewater District School Board (7)					
1399	Lucknow Central PS	Lucknow	E	65.58%	71.42%
Brant Haldimand Norfolk Catholic District School Board (51)					
3660	Sacred Heart S	Langton	E		65.34%
Bruce-Grey Catholic District School Board (35)					
	No schools identified				
Conseil de district des écoles publiques de langue française No 59 (59)					
1628	Madeleine-de-Roybon, E (Leased from CFB)	Kingston	E	92.15%	
Conseil scolaire de district catholique Centre-Sud (64)					
8755	ÉÉ Corpus-Christi	Oshawa	E	80.72%	
3230	ÉÉ Georges-Étienne-Cartier	Toronto	E		65.97%
7968	ÉÉ Immaculée-Conception	St. Catharines	E		65.59%
9614	ÉÉ Monseigneur-Jamot	Peterborough	E	70.70%	
3632	ÉÉ Sacré-Cœur	Toronto	E	87.13%	76.56%
Conseil scolaire de district catholique Centre-Sud (64)					
8284	ÉÉ Sainte-Croix	Tiny	E	68.01%	77.95%
4559	ÉÉ Sainte-Madeleine	Toronto	E		67.30%
4006	ÉÉ Saint-Jean-de-Lalande	Toronto	E	66.02%	
4420	ÉÉ Saint-Noël-Chabanel	Toronto	E	65.20%	
Conseil scolaire de district catholique de l'est Ontarien (65)					
4565	Sainte-Trinite, E. sep.	Rockland	E		68.45%
3961	Saint-Gabriel, E. sep.	Cornwall	E		75.83%
3627	Saint-Jean, E. sep.	Embrun	E		65.03%
4028	Saint-Jean-Bosco, E. sep.	Hawkesbury	E		68.22%
4128	Saint-Joseph, E. sep.	Lefavre	E	105.42%	100.33%
4094	Saint-Joseph, E. sep.	Lancaster	E		79.16%

SFIS	Facility Name	City/Town	Panel	FCI by OTG	FCI by GFA
Conseil scolaire de district catholique de l'est Ontarien (65) - continued					
4131	Saint-Joseph, E. sep.	Wendover	E		69.72%
6250	SEFA Campus Casselman	Casselman	S		69.17%
6204	St-Gregoire, E	Vankleek Hill	E	74.56%	77.03%
Conseil scolaire de district catholique des Aurores Boreales (62)					
	No schools identified				
Conseil scolaire de district catholique des Grandes Rivieres (60.1)					
	No schools identified				
Conseil scolaire de district catholique du Centre-Est de l'Ontario (66)					
3161	Ange-Gabriel, Ecole	Brockville	E		79.18%
Conseil scolaire de district catholique du Nouvel-Ontario (61)					
3460	Notre Dame, E. sep.	Hanmer	E	65.33%	
4095	Saint-Joseph, E. sep.	Chelmsford	E		67.26%
Conseil scolaire de district catholique Franco-Nord (60.2)					
3139	Cite-des-Jeunes, E. sep.	North Bay	E	105.82%	
3628	Echo-Jeunesse, E. sep.	Sturgeon Falls	E	99.11%	67.44%
3389	Lorrain, E. sep.	Bonfield	E	69.63%	66.07%
3404	Mariale, E. sep.	Thorne	E	70.21%	67.88%
4547	Sainte-Anne, E. sep.	North Bay	E	72.70%	70.60%
4544	Sainte-Anne, E. sep.	Mattawa	E		74.05%
9323	St-Thomas d'Aquin, Ecole	Astorville	E	95.74%	76.38%
Conseil scolaire de district des ecoles catholiques du Sud-Ouest (63)					
	No schools identified				
Conseil scolaire de district du Centre Sud-Ouest (58)					
9529	Maison Montessori	North York	E	74.16%	
Conseil scolaire de district du Grand Nord de l'Ontario (57)					
	No schools identified				
Conseil scolaire de district du Nord-Est de l'Ontario (56)					
	No schools identified				
District School Board of Niagara (22)					
553	Dalewood PS	St. Catharines	E	69.87%	71.98%
702	Edith Cavell PS	St. Catharines	E	96.34%	
1363	Lincoln Centennial PS	St. Catharines	E		69.48%
1525	Memorial PS	St. Catharines	E	80.12%	76.68%
1923	Queen Mary PS	St. Catharines	E	110.30%	78.42%
5900	Vineland/Maplegrove PS (Annex-Maplegrove)	Vineland	E		71.93%
District School Board Ontario North East (01)					
	No schools identified				
Dufferin Peel Catholic District School Board (43)					
3128	Father C W Sullivan S	Brampton	E	66.83%	
9329	Holy Name of Mary (Leased from Felician Sisters)	Mississauga	S	75.95%	77.07%
3384	Lester B Pearson S	Brampton	E	72.18%	
3406	Mary Fix Catholic S	Mississauga	E	71.16%	
3738	St Anne Sep S	Brampton	E	79.93%	
4091	St Joseph Sep S (Brampton)	Brampton	E		65.99%
4239	St Mary Sep S (Brampton)	Brampton	E	79.37%	

SFIS	Facility Name	City/Town	Panel	FCI by OTG	FCI by GFA
Durham Catholic District School Board (45)					
	No schools identified				
Durham District School Board (13)					
159	Beaverton PS	Beaverton	E	67.12%	
5262	Cartwright HS	Blackstock	S		70.27%
645	Florence M Heard PS	Whitby	E	67.89%	73.96%
1016	Harmony PS	Oshawa	E	73.52%	76.52%
477	Leslie McFarlane PS	Whitby	E	75.77%	69.47%
1750	Palmerston Avenue PS	Whitby	E	65.65%	
1937	R A Hutchison PS	Whitby	E	68.44%	65.47%
1990	Ritson PS	Oshawa	E	66.53%	70.56%
397	Thorah Central PS	Beaverton	E	68.04%	
Eastern Ontario Catholic District School Board (52)					
3127	Iona Academy	Williamstown	E		78.71%
9292	Mother Teresa Annex (formerly Russel Arts and Education Centre)	Russell	E	66.46%	
3869	St. Columban's East	Cornwall	E		67.74%
3872	St. Columban's West	Cornwall	E		71.68%
4138	St. Joseph Sep S	Prescott	E	74.99%	75.73%
Grand Erie District School Board (23)					
	No schools identified				
Greater Essex County District School Board (9)					
	No schools identified				
Halton Catholic District School Board (46)					
	No schools identified				
Halton District School Board (20)					
	No schools identified				
Hamilton-Wentworth Catholic District School Board (47)					
	No schools identified				
Hamilton-Wentworth District School Board (21)					
297	C H Bray PS	Ancaster	E	127.70%	111.29%
8038	Central	Hamilton	E		71.33%
8042	Dalewood	Hamilton	E	84.99%	
8029	Linden Park	Hamilton	E	70.24%	
8062	Prince Philip	Hamilton	E	65.06%	
8075	Sanford Avenue	Hamilton	E	85.90%	
Hastings and Prince Edward District School Board (29)					
2157	Sir Mackenzie Bowell Sr PS	Belleville	E	73.69%	
Huron-Perth Catholic District School Board (36)					
	No schools identified				
Huron-Superior Catholic District School Board (31)					
6326	Mount St Joseph College	Sault Ste. Marie	S	68.60%	65.79%
3633	Sacred Heart Sep S	Espanola	E		66.97%
Kawartha Pine Ridge District School Board (14)					
17	Adam Scott C & VI (Elem)	Peterborough	E	73.73%	
5193	Adam Scott C & VI (Sec)	Peterborough	S	73.73%	

SFIS	Facility Name	City/Town	Panel	FCI by OTG	FCI by GFA
248	Brighton PS	Brighton	E	74.36%	76.42%
Kawartha Pine Ridge District School Board (14) - continued					
284	Burnham PS	Cobourg	E		68.79%
371	Camborne PS	Cobourg	E		69.00%
525	Castleton PS	Castleton	E	97.31%	125.02%
400	Central PS	Bowmanville	E	88.59%	75.73%
617	Dr L B Powers PS	Port Hope	E	67.75%	
5326	East Northumberland SS	Brighton	S	71.38%	
882	George Hamilton PS	Port Hope	E		70.69%
1033	Havelock PS	Havelock	E		67.68%
1112	Howard Jordan PS	Port Hope	E	67.40%	72.94%
1297	Kirby Centennial Public School PS	Orono	E		70.40%
1311	Lakefield Intermed S	Lakefield	E	68.01%	
5931	Millbrook/South Cavan Annex	Millbrook	E		68.54%
372	North Hope Central PS	Campbellcroft	E	102.87%	108.96%
1940	R F Downey PS	Peterborough	E	89.27%	84.46%
526	South Cramahe PS	Colborne	E		70.59%
501	South Monaghan PS	Baillieboro	E	69.68%	66.95%
2200	Spring Valley PS	Brighton	E		66.00%
2475	Westmount PS	Peterborough	E		69.50%
2584	Youngs Point	Youngs Point	E		99.65%
Keewatin-Patricia District School Board (5.1)					
1116	Hudson PS	Hudson	E		94.91%
1740	Oxdrift PS	Oxdrift	E		74.17%
1819	Pinewood PS	Dryden	E		70.51%
2000	Riverview PS	Dryden	E	74.89%	76.42%
7532	Valleyview P.S.	Kenora	E		71.50%
2409	Wabigoon PS	Wabigoon	E	74.14%	68.18%
Kenora Catholic District School Board (33.2)					
10543	St. Thomas Aquinas Annex	Kenora	E		116.04%
Lakehead District School Board (6.1)					
9974	Valley Central/Rosslyn Village annex	Thunder Bay	E		86.42%
Lambton Kent District School Board (10)					
1283	King George VI PS	Sarnia	E		66.00%
2576	Wyoming PS	Wyoming	E		66.24%
Limestone District School Board (27)					
9648	Amherst Island PS	Stella	E	100.66%	67.00%
9675	Enterprise PS	Enterprise	E		65.01%
862	Frontenac PS	Kingston	E	70.62%	
1391	Lord Strathcona PS	Kingston	E	71.62%	71.45%
2548	Marysville PS	Wolfe Island	E		78.29%
1860	Prince Charles PS	Verona	E	67.79%	68.22%
1941	R Gordon Sinclair Memorial PS	Kingston	E		66.50%
Limestone District School Board (27) - continued					
5636	Sharbot Lake HS (Sec)	Sharbot Lake	S	69.15%	
London District Catholic School Board (38)					

SFIS	Facility Name	City/Town	Panel	FCI by OTG	FCI by GFA
	No schools identified				
Near North District School Board (4)					
358	Centennial PS	North Bay	E	66.63%	
1170	J W Trusler PS	North Bay	E	71.11%	75.72%
1277	King George PS	North Bay	E		65.77%
1340	Laurentian PS	North Bay	E		74.96%
Niagara Catholic District School Board (50)					
7980	Our Lady of Fatima	Grimsby	E		66.45%
7973	St Joseph	Grimsby	E		68.51%
Nipissing-Parry Sound Catholic District School Board (30.2)					
3652	Sacred Heart Sep S	North Bay	E		68.10%
3999	St Hubert Sep S	North Bay	E	95.96%	76.74%
4114	St Joseph Sep S	North Bay	E	70.54%	
4523	St Victor Sep S	Mattawa	E	99.33%	66.09%
Northeastern Catholic District School Board (30.1)					
	No schools identified				
Northwest Catholic District School Board (33.1)					
	No schools identified				
Ottawa-Carleton Catholic District School Board (53)					
3451	Our Lady of Peace Sep S	Nepean	E		73.10%
Ottawa-Carleton District School Board (25)					
2988	Clifford Bowey PS	Ottawa	E	69.74%	
583	Devonshire PS	Ottawa	E	69.46%	
637	Dunning-Foubert ES	Orleans	E	88.03%	
10140	Fitzroy Harbour PS	Fitzroy Harbour	E		73.21%
1236	Katimavik PS	Kanata	E	133.33%	
2016	Rockcliffe Park PS	Ottawa	E	65.82%	
Peel District School Board (19)					
304	Alton PS	Caledon	E	65.30%	
1036	Hawthorn PS	Mississauga	E	71.23%	
1394	Lorne Park PS	Mississauga	E	67.43%	
Peterborough Victoria Northumberland and Clarington Catholic District School Board (41)					
	No schools identified				
Rainbow District School Board (3)					
2445	Wembley PS	Sudbury	E	73.90%	68.16%
Rainy River District School Board (5.2)					
9377	Donald Young PS	Emo	E	85.84%	93.10%
9378	F H Huffman PS	Fort Frances	E		69.57%
9384	Robert Moore School	Fort Frances	E	76.81%	
Renfrew County Catholic District School Board (54)					
4088	St Joseph's Sep S - Calabogie	Calabogie	E	65.56%	
3622	St. Francis of Assisi Catholic School (formerly Rivercrest)	Petawawa	E	79.71%	72.37%
Renfrew County District School Board (28)					
	No schools identified				
Simcoe County District School Board (17)					

SFIS	Facility Name	City/Town	Panel	FCI by OTG	FCI by GFA
	No schools identified				
Simcoe Muskoka Catholic District School Board (44)					
	No schools identified				
St. Clair Catholic District School Board (39)					
	No schools identified				
Sudbury Catholic District School Board (32)					
3158	Corpus Christi Sep S	Sudbury	E	68.09%	78.24%
3766	St Christopher Sep S	Sudbury	E	74.05%	72.90%
3884	St David Sep S	Sudbury	E	74.69%	65.79%
4482	St Theresa Sep S	Sudbury	E	83.76%	75.77%
Superior North Catholic District School Board (34.2)					
	No schools identified				
Superior-Greenstone District School Board (6.2)					
896	B A Parker PS	Geraldton	E	65.99%	
5631	Lake Superior HS	Terrace Bay	S	87.93%	
5542	Nipigon Red Rock DHS	Red Rock	S	70.39%	
2089	Schreiber PS	Schreiber	E		68.44%
Thames Valley District School Board (11)					
1398	Lucan PS	Lucan	E	78.11%	77.19%
7895	M B McEachren PS	London	E	66.86%	74.54%
1835	Plover Mills PS	Thorndale	E		68.38%
9932	Sweaburg PS	Woodstock	E		68.35%
Thunder Bay Catholic District School Board					
	No schools identified				
Toronto Catholic District School Board (40)					
9512	St Edward Sep S (Lease from TDSB)	North York	E		70.96%
Toronto District School Board (12)					
8349	ALPHA Alt. School Jr & Sr (form. Brant PS)	Toronto	E	68.70%	
9061	Brookview MS	North York	E	70.74%	
8377	City View Alt. School (Shirley Street Jr PS)	Toronto	E	68.57%	68.60%
8382	Cottingham Jr PS	Toronto	E	70.47%	
8924	General Crerar PS	Scarborough	E	74.49%	77.44%
8879	George P Mackie Jr PS	Scarborough	E	69.07%	68.51%
8461	Hillcrest Jr PS & City Community Centre	Toronto	E	67.22%	
8462	Hodgson Sr PS	Toronto	E	72.06%	
8947	Ionview PS	Scarborough	E		71.99%
8407	Oasis Alt. SS, ALPHA (program in form. Brant PS)	Toronto	S	68.70%	
9164	Park Lane PS	North York	E	74.99%	
8675	Seneca School	Etobicoke	E	84.11%	
8437	Shirley Street Jr PS	Toronto	E	68.57%	68.60%
8443	Sunny View Jr & Sr PS	Toronto	E	102.43%	
Trillium Lakelands District School Board (15)					
2379	CLC - Haliburton (Formerly/Victoria Street ES)	Haliburton	S		103.96%
Upper Canada District School Board (26)					
1527	Memorial Park PS	Cornwall	E	71.96%	85.58%
5441	Seaway District HS	Iroquois	S	66.72%	

SFIS	Facility Name	City/Town	Panel	FCI by OTG	FCI by GFA
2528	Winchester PS	Winchester	E	88.76%	
Upper Grand District School Board (18)					
1024	Harriston PS	Harriston	E	72.45%	84.21%
Waterloo Catholic District School Board (49)					
3797	St Bernadette Sep S	Kitchener	E		71.53%
Waterloo Region District School Board (24)					
	No schools identified				
Wellington Catholic District School Board (48)					
	No schools identified				
Windsor-Essex Catholic District School Board (37)					
7836	St Jules	Windsor	E	65.10%	75.33%
York Catholic District School Board (42)					
3638	Holy Name Sep S	King City	E	68.34%	
4321	St Michael Sep S	Thornhill	E	65.02%	
York Region District School Board (16)					
110	Aurora Sr PS	Aurora	E	84.73%	68.87%
146	Bayview Glen PS	Thornhill	E		68.74%
988	Deer Park PS	Keswick	E	88.88%	
5315	Dr G W Williams SS	Aurora	S	75.65%	
6351	Eva L. Dennis Building	King City	E		67.03%
890	George Street PS	Aurora	E	105.05%	94.84%
909	Glen Cedar PS	Newmarket	E	70.52%	
1168	J L R Bell PS	Newmarket	E		68.92%
1183	James Robinson PS	Markham	E	74.45%	97.29%
1225	Joseph A Gibson PS	Maple	E		74.18%
1258	Kettleby PS	Kettleby	E	69.54%	
1285	King City PS	King City	E	103.35%	
1512	Meadowbrook PS	Newmarket	E	66.19%	
1289	Nobleton Junior PS	Nobleton	E	87.54%	91.74%
1720	Orchard Park PS	Stouffville	E	71.25%	65.20%
985	Queensville PS	Queensville	E		160.43%
984	Sharon PS	Sharon	E		66.04%
5681	Stouffville District SS	Stouffville	S	71.51%	77.34%
2267	Sutton PS	Sutton West	E		65.84%
2444	Wells Street S	Aurora	E	118.94%	135.87%
2490	Whitchurch Highlands PS	Stouffville	E	65.27%	
2558	Woodland PS	Thornhill	E	80.24%	77.36%

BOARD IDENTIFIED PTR-CANDIDATE FORM

**PRELIMINARY IDENTIFICATION OF INTENT TO ADDRESS NEEDS OF THE
FACILITIES INDICATED ON THE PROHIBITIVE TO REPAIR (PTR) CANDIDATE
INVENTORY**

Please complete all the shaded areas:

Date of this notice:	
Name of District School Board:	
Address:	Telephone:
Fax Number:	E-Mail Address:
Contact Name:	Signature (Required only if faxed):

The above mentioned school board is hereby providing written notification to the Ministry of Education of its intent to apply for:

Addition of facility to the Ministry's Prohibitive to Repair Candidate Inventory list for the School Board identified above. List names, SFIS numbers and a brief description of why the facilities should be considered a PTR-candidate:

Addition of part of a facility to the Ministry's Prohibitive to Repair Candidate Inventory list for the School Board identified above. List names, SFIS numbers and identify the section of the facilities to be considered. Also, provide a brief description of why the facility should be considered a PTR-candidate:

Removal of facility from the Ministry's Prohibitive to Repair Candidate Inventory list for the School Board identified above. List names, SFIS numbers and a brief description of why the facility should be removed from the PTR-Candidate Inventory:

The board will be required to submit a written proposal to explain the rationale for suggesting the above addition/addition of a section/removal of a facility from the Ministry PTR-Candidate inventory.

Due: November 30, 2006

Return this notice to: Policy Team Lead, Good Places to Learn Unit
Business Services Branch
Ministry of Education, 900 Bay Street, 21st Floor
Toronto, Ontario
Fax: (416) 325-4024 Email: BSB.GPL@Ontario.ca

MINISTRY OF EDUCATION ACTION:

Notification received by Ministry of Education on:

Notification reviewed on: Reviewed by:

Ministry Decision on Notification:

Decision Date: Decision by:

Decision Approved by Director, Business Services Branch on:

PRELIMINARY IDENTIFICATION OF PTR-CANDIDATE CATEGORY FORM

Please complete the shaded area for all schools that have been identified by the Ministry as PTR-candidate facilities and those that have been proposed by the board as possible PTR-candidates. For each facility please indicate the proposed PTR-Category and the priority in which the board will approach these projects.

PTR Categories include:

- **Category 1: Single School Solution**
Schools in poor repair that need to be replaced on the same site or a nearby site for the intact school community.
- **Category 2: Multiple School Solution**
This solution involves more than one school. This includes options such as building addition(s) onto neighbouring school(s) or building a new consolidated school on an existing or new site.
- **Category 3: Retire School Solution**
Schools where the affected students can be accommodated in existing schools with excess capacity within the planning area. The PTR school does not need to be replaced and can be retired.

Due: November 30, 2006

Return this notice to:

**Policy Team Lead, Good Places to Learn Unit
Business Services Branch
Ministry of Education, 900 Bay Street, 21st Floor
Toronto, Ontario
Fax: (416) 325-4024**

Email: BSB.GPL@Ontario.ca

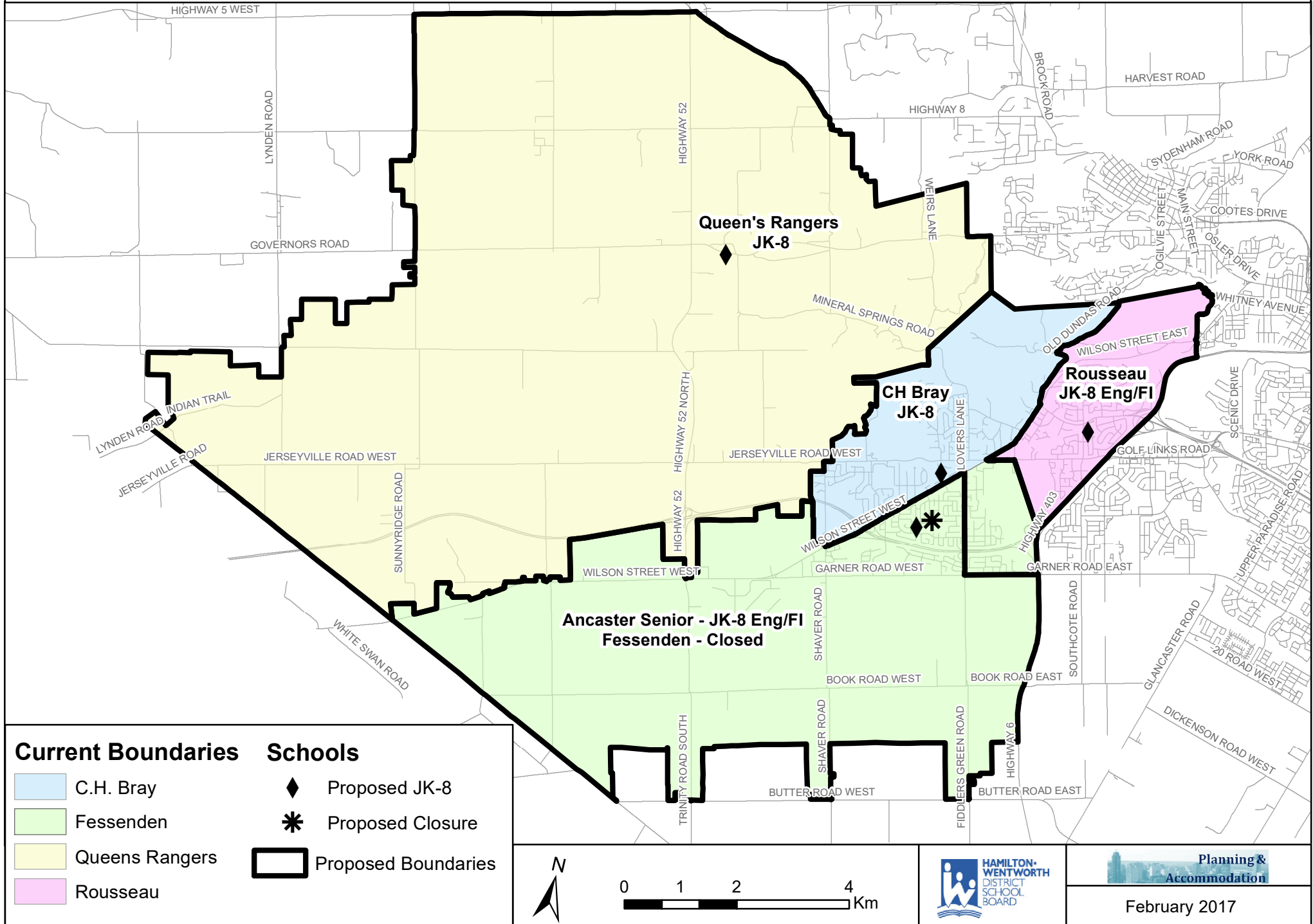
School Name	SFIS Number	Ministry Identified PTR-Candidate	PTR Category	Priority Ranking	Other information

Received February 17, 2017

During your discussions on what is to happen to Ancaster elementary schools, we hope to remind you that whatever you choose to support the idea of future plans to open Valleyview up to a school bus route would not be supported by our community. The street does not have sidewalks, is barely wide enough for anyone to walk on as a car drives by let alone it become a mass exit for all buses at the end of a day. I hope we can count on you to support the concerns of the community and make our voice heard.

Cathy Tassone

Ancaster - Advisory Committee Option #1

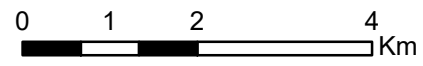


Current Boundaries

- C.H. Bray
- Fessenden
- Queens Rangers
- Rousseau

Schools

- Proposed JK-8
- Proposed Closure
- Proposed Boundaries



Option #1

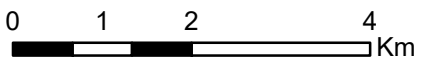
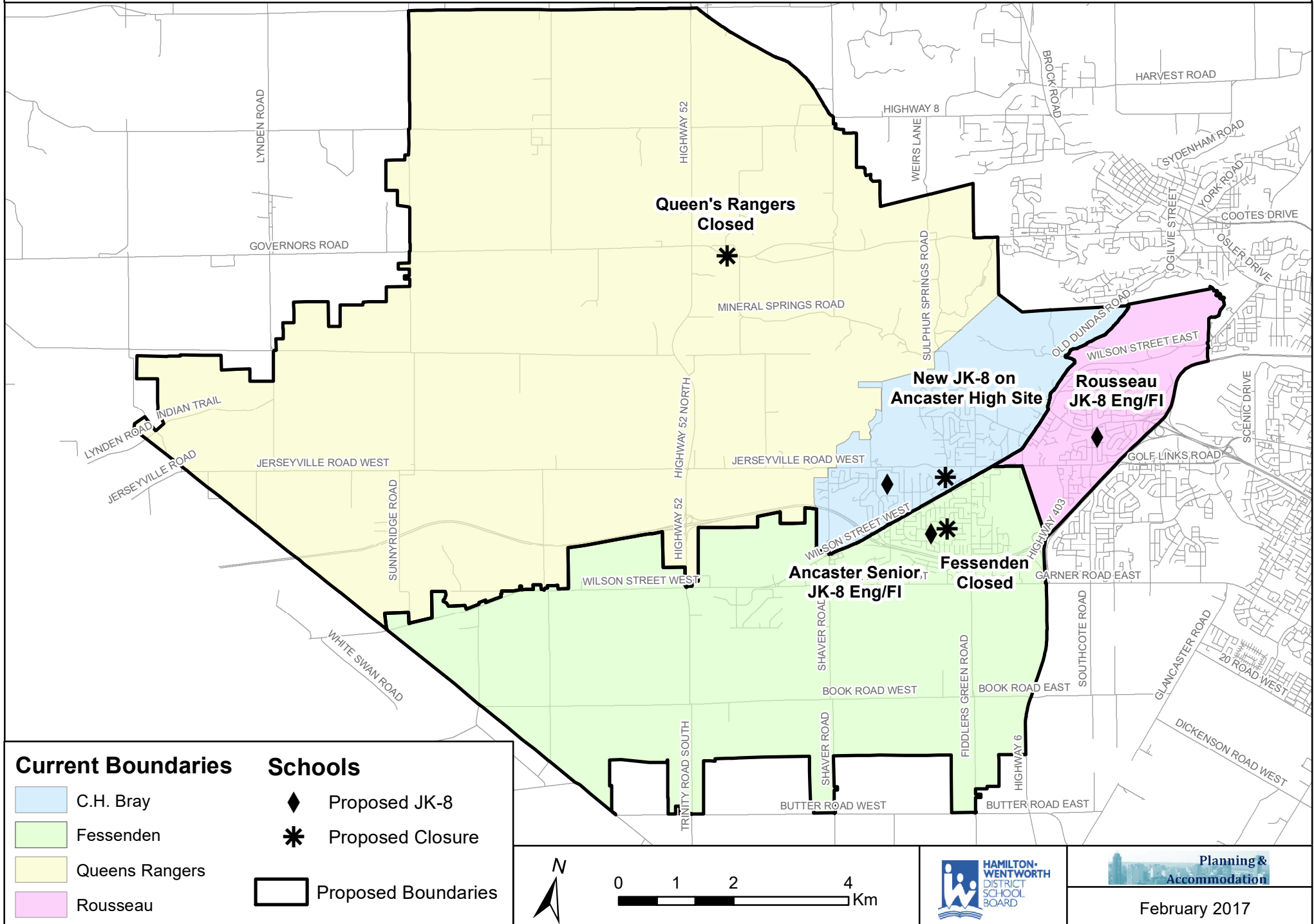
- Ancaster Senior - addition, dual-track FI, K-8* (approx. 500pp)
- CH Bray - rebuild, K-8 (approx. 500pp)
- Fessenden - closure
- Rousseau - addition, dual-track FI, K-8* (approx. 390pp) -
- Queen's Rangers - convert to K-8, annex and repurpose approx. 48pp

*Flexible weighting for 7-8

Option #1	Current OTG	Proposed OTG	Program	2020	2021	2022	2023	2024	2025	2026
Ancaster Senior	387	488	Eng (JK-8)	260	255	260	259	258	257	259
			FI (1-8)	234	233	238	240	234	236	236
			Total	494	488	498	499	492	492	495
			Utilization	101%	100%	102%	102%	101%	101%	101%
CH Bray	199	495	Eng (JK-8)	450	437	444	445	448	444	444
			FI (1-8)	0	0	0	0	0	0	0
			Total	450	437	444	445	448	444	444
			Utilization	91%	88%	90%	90%	91%	90%	90%
Fessenden	383	Closed	Eng	0	0	0	0	0	0	0
			FI	0	0	0	0	0	0	0
			Total	0	0	0	0	0	0	0
			Utilization	0%	0%	0%	0%	0%	0%	0%
Queen's Rangers	222	176	Eng (JK-8)	144	147	140	135	135	138	138
			FI (1-8)	0	0	0	0	0	0	0
			Total	144	147	140	135	135	138	138
			Utilization	82%	83%	80%	77%	77%	79%	79%
Rousseau	291	395	Eng (JK-8)	271	266	268	262	265	262	264
			FI (1-8)	138	135	145	146	139	141	141
			Total	409	401	413	408	405	403	405
			Utilization	103%	102%	105%	103%	102%	102%	103%
Total	1482	1554	Eng	1125	1105	1112	1101	1106	1101	1104
			FI	372	368	383	386	373	376	378
			Total	1498	1474	1496	1488	1481	1478	1482
			Utilization	96%	95%	96%	96%	95%	95%	95%

Updated March 7, 2017

Ancaster - Advisory Committee Option #2



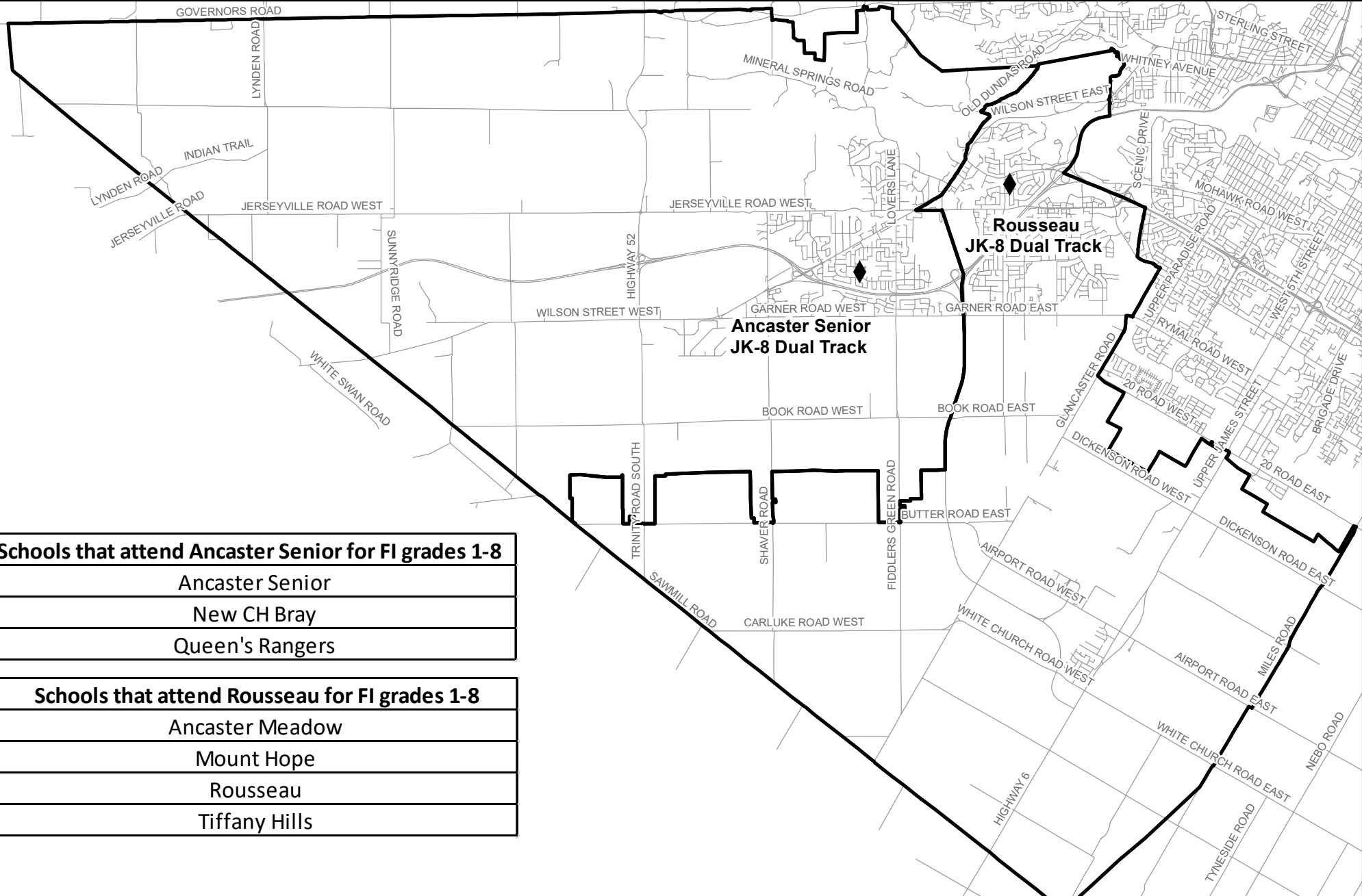
Option #2

- Closure of Fessenden and Queen's Rangers
- Rebuild Ancaster Senior, 518 pupil place JK-8 dual track
- Rebuild CH Bray on Ancaster High Site, 541 pupil place JK-8
- Rebuild Rousseau, 423 pupil place JK-8 dual track

Option #2	Current OTG	Proposed OTG	Program	2020	2021	2022	2023	2024	2025	2026
Ancaster Senior	387	518	Eng (JK-8)	284	275	283	282	281	283	283
			FI (1-8)	248	246	255	257	249	251	252
			Total	532	521	538	540	530	534	535
			Utilization	103%	101%	104%	104%	102%	103%	103%
CH Bray	199	541	Eng (JK-8)	543	535	534	531	534	532	532
			FI (1-8)	0	0	0	0	0	0	0
			Total	543	535	534	531	534	532	532
			Utilization	100%	99%	99%	98%	99%	98%	98%
Fessenden	383	Closed	Eng	0	0	0	0	0	0	0
			FI	0	0	0	0	0	0	0
			Total	0	0	0	0	0	0	0
			Utilization	0%	0%	0%	0%	0%	0%	0%
Queen's Rangers	222	Closed	Eng	0	0	0	0	0	0	0
			FI	0	0	0	0	0	0	0
			Total	0	0	0	0	0	0	0
			Utilization	0%	0%	0%	0%	0%	0%	0%
Rousseau	291	423	Eng (JK-8)	298	295	296	289	293	287	290
			FI (1-8)	124	123	128	129	124	125	126
			Total	422	418	424	418	417	412	416
			Utilization	100%	99%	100%	99%	99%	97%	98%
Total	1482	1482	Eng	1126	1106	1113	1102	1107	1102	1105
			FI	372	368	383	386	373	376	378
			Total	1498	1474	1496	1488	1481	1478	1483
			Utilization	101%	99%	101%	100%	100%	100%	100%

Updated March 7, 2017

Ancaster - FI Boundary - Option #1 and #2



Schools that attend Ancaster Senior for FI grades 1-8
Ancaster Senior
New CH Bray
Queen's Rangers

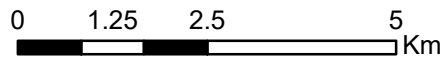
Schools that attend Rousseau for FI grades 1-8
Ancaster Meadow
Mount Hope
Rousseau
Tiffany Hills

Schools

◆ Proposed JK-8

Boundaries

▭ Proposed FI Boundary



Estimated Capital Work - Advisory Committee Options

Option #1 - Estimated Capital Work:

Ancaster Senior - 3 room FDK addition. Assessibility, benchmark and renewal as stated in feasibility report.

CH Bray - New construction of 495 pupil place JK-8 school

Queen's Rangers - Assessibility, benchmark and renewal as stated in feasibility report.

Rousseau - 5 classroom addition. Assessibility, benchmark and renewal as stated in feasibility report.

School	New School	Addition	Accesibility	Benchmark	Demo	Renewal	Total
Ancaster Senior	\$ -	\$ 2,109,375	\$ 161,156	\$ 50,625	\$ -	\$ 1,431,513	\$ 3,752,669
CH Bray	\$ 10,497,142	\$ -	\$ -	\$ -	\$ 1,797,980	\$ -	\$ 12,295,122
Queen's Rangers	\$ -	\$ -	\$ 194,063	\$ 1,266,891	\$ -	\$ 990,505	\$ 2,451,459
Rousseau	\$ -	\$ 4,590,000	\$ 58,219	\$ 712,969	\$ -	\$ 1,392,049	\$ 6,753,237
Total	\$ 10,497,142	\$ 6,699,375	\$ 413,438		\$ 1,797,980	\$ 3,814,067	\$ 25,252,487

Option #2 - Estimated Capital Work:

Ancaster Senior - New construction of 518 pupil place JK-8 school on Ancaster Senior/Fessenden site - demolition of current shool

CH Bray - Construction of new 541 pupil place JK-8 school on Ancaster High site

Rousseau - Construction of new 423 pupil place JK-8 school on Rousseau site

School	New School	Addition	Accesibility	Benchmark	Demo	Renewal	Total
Ancaster Senior	\$ 10,921,513	\$ -	\$ -	\$ -	\$ 4,296,698	\$ -	\$ 15,218,211
CH Bray	\$ 11,340,257	\$ -	\$ -	\$ -	\$ -	\$ -	\$ 11,340,257
Rousseau	\$ 8,918,533	\$ -	\$ -	\$ -	\$ 1,930,196	\$ -	\$ 10,848,729
Total	\$ 31,180,303	\$ -	\$ -	\$ -	\$ 6,226,895	\$ -	\$ 37,407,198