



# **East Hamilton City 1**

Accommodation Review Committee

Working Group Meeting # 4

Hillcrest

Parkdale

Rosedale

Roxborough Park

Viscount Montgomery

W.H. Ballard

Woodward

W.H Ballard, November 14<sup>th</sup>, 2013



# Welcome and Introductions

## 2. Agenda

- Approval of Minutes
  - Working group Meeting #3
  - Public Meeting #2
- Provide additional information on enrolment projections
- Transportation information
- Review the committee's Key Themes and consider community input from Public Meeting #2
- Committee discussions on options
  - Construct options

## 3. Minutes from Working Group Meeting #3

### 3.1 Clarification

### 3.2 Approval of Minutes

## 4. Minutes from Public Meeting #2

### 4.1 Clarification

### 4.2 Approval of Minutes

## 5. Data Requests

- Transportation Information – Estimated costs based on Staff Option
- Program Compliment and School Size Information
- Current and 10yr Renewal Needs
- 5Yr Capital Expenditures
- Draft Minutes from Working Group Meeting #3
- Student counts within boundary areas
- Draft Minutes from Public Meeting #2
- Raw data from Public Meeting #2
- Correspondence



# Transportation Information

	2013-14 Regular Student Data			Proposed Staff Recommendations			Estimated Transportation Impact		
	Students Attending	Eligible for Transportation	Number of Bus Runs	Students Attending	Eligible for Transportation	Number of Bus Runs	Eligible for Transportation	Number of Buses	Estimated Costs
Roxborough Park	222	0	0	0	0	0	0	0	\$ -
Hillcrest	423	42	1	769	182	3	140	2	\$ 77,000
Woodward	124	17	1	0	0	0	-17	0	\$ -
<b>Sub Total</b>	<b>769</b>	<b>59</b>	<b>2</b>	<b>769</b>	<b>182</b>	<b>3</b>	<b>123</b>	<b>2</b>	<b>\$ 77,000</b>
Rosedale	157	0	0	0	0	0	0	0	\$ -
Viscount Montgomery	320	36	1	477	132	2	96	1	\$ 38,500
<b>Sub Total</b>	<b>477</b>	<b>36</b>	<b>1</b>	<b>477</b>	<b>132</b>	<b>2</b>	<b>96</b>	<b>1</b>	<b>\$ 38,500</b>
Parkdale	159	0	0	0	0	0	0	0	\$ -
WH Ballard	544	40	1	703	140	3	2	2	\$ 77,000
<b>Sub Total</b>	<b>703</b>	<b>40</b>	<b>1</b>	<b>703</b>	<b>140</b>	<b>3</b>	<b>100</b>	<b>2</b>	<b>\$ 77,000</b>
<b>TOTALS</b>	<b>1949</b>	<b>135</b>	<b>4</b>	<b>1949</b>	<b>454</b>	<b>8</b>	<b>319</b>	<b>5</b>	<b>\$ 192,500</b>

## 2013 East City Elementary ARC Transportation Cost Impact Estimates ASSUMPTIONS

1	Annual estimated bus costs \$38,500 for single tier, urban route
2	Elementary buses planned to ridership of 66
3	November 2013 student data
4	Bus additions assume no efficiencies with existing fleet
5	Current Woodward bus not usable in consolidated Hillcrest school due to bell times
6	Viscount buses loaded both to 66 riders; any growth will require additional vehicle
7	Existing walk boundaries apply with no hazard exceptions
8	Existing school bell times
9	Special Needs students & bus routes excluded from study
10	Out of catchment students not eligible for transportation per policy





## **6. Additional Enrolment Information**

# Factors influencing Enrolment Projections

- Historical enrolments
- Grade by grade progression factors
- HWDSB apportionment (share of school age children)
- New residential development
- Immigration (not prevalent)
- Birth rates

## Historic Enrolments

Year	JK	SK	1	2	3	4	5	6	7	8	SP-E	Total
2001	190	252	241	242	246	272	225	331	315	256	106	2676
2002	219	216	283	235	233	248	273	310	325	293	96	2731
2003	184	244	230	266	234	239	239	327	299	296	111	2669
2004	209	222	286	253	279	244	255	306	327	295	124	2800
2005	189	224	226	282	240	262	240	275	296	319	115	2668
2006	177	234	240	242	280	274	291	261	254	281	114	2648
2007	191	197	237	234	227	273	266	281	260	265	108	2539
2008	162	209	197	229	212	231	276	271	269	265	89	2410
2009	198	173	201	187	225	207	223	274	266	261	82	2297
2010	185	226	178	193	184	227	217	218	271	258	78	2235
2011	182	186	229	189	181	176	239	209	213	265	83	2152
2012	183	201	191	221	180	188	180	234	208	215	79	2080
2013	176	179	198	185	214	178	190	177	232	208	79	2015
2014	179	181	183	193	178	213	178	187	176	232	79	1979
2015	177	179	175	179	186	175	215	176	185	176	79	1902
2016	173	177	173	171	172	184	176	212	174	185	79	1876
2017	173	173	171	169	164	171	185	174	209	174	79	1843
2018	173	173	168	167	162	163	172	183	173	208	79	1822
2019	174	174	168	164	161	161	164	171	182	173	79	1772
2020	174	174	168	165	158	160	163	163	169	182	79	1754
2021	174	174	168	164	158	157	161	161	161	168	79	1725
2022	174	174	168	164	157	157	158	159	160	161	79	1710

## Apportionment Rates

### Elementary Apportionment

HWDSB Elementary Students						
2006/ 2007	2007/ 2008	2008/ 2009	2009/ 2010	2010/ 2011	2011/ 2012	Change
33,109	32,444	31,884	31,372	31,221	31,080	-2,029
64.7%	64.6%	64.6%	64.5%	64.7%	64.8%	0.0%

### Secondary Apportionment

HWDSB Secondary Students						
2006/ 2007	2007/ 2008	2008/ 2009	2009/ 2010	2010/ 2011	2011/ 2012	Change
18,091	17,877	17,648	17,582	17,213	16,788	-1,303
64.4%	63.8%	63.2%	62.4%	62.3%	62.2%	-2.3%

### HWCDSD Elementary Students

2006/ 2007	2007/ 2008	2008/ 2009	2009/ 2010	2010/ 2011	2011/ 2012	Change
18,034	17,794	17,496	17,295	17,003	16,911	-1,123
35.3%	35.4%	35.4%	35.5%	35.3%	35.2%	0.0%

### HWCDSD Secondary Students

2006/ 2007	2007/ 2008	2008/ 2009	2009/ 2010	2010/ 2011	2011/ 2012	Change
9,985	10,136	10,270	10,598	10,432	10,219	234
35.6%	36.2%	36.8%	37.6%	37.7%	37.8%	2.3%

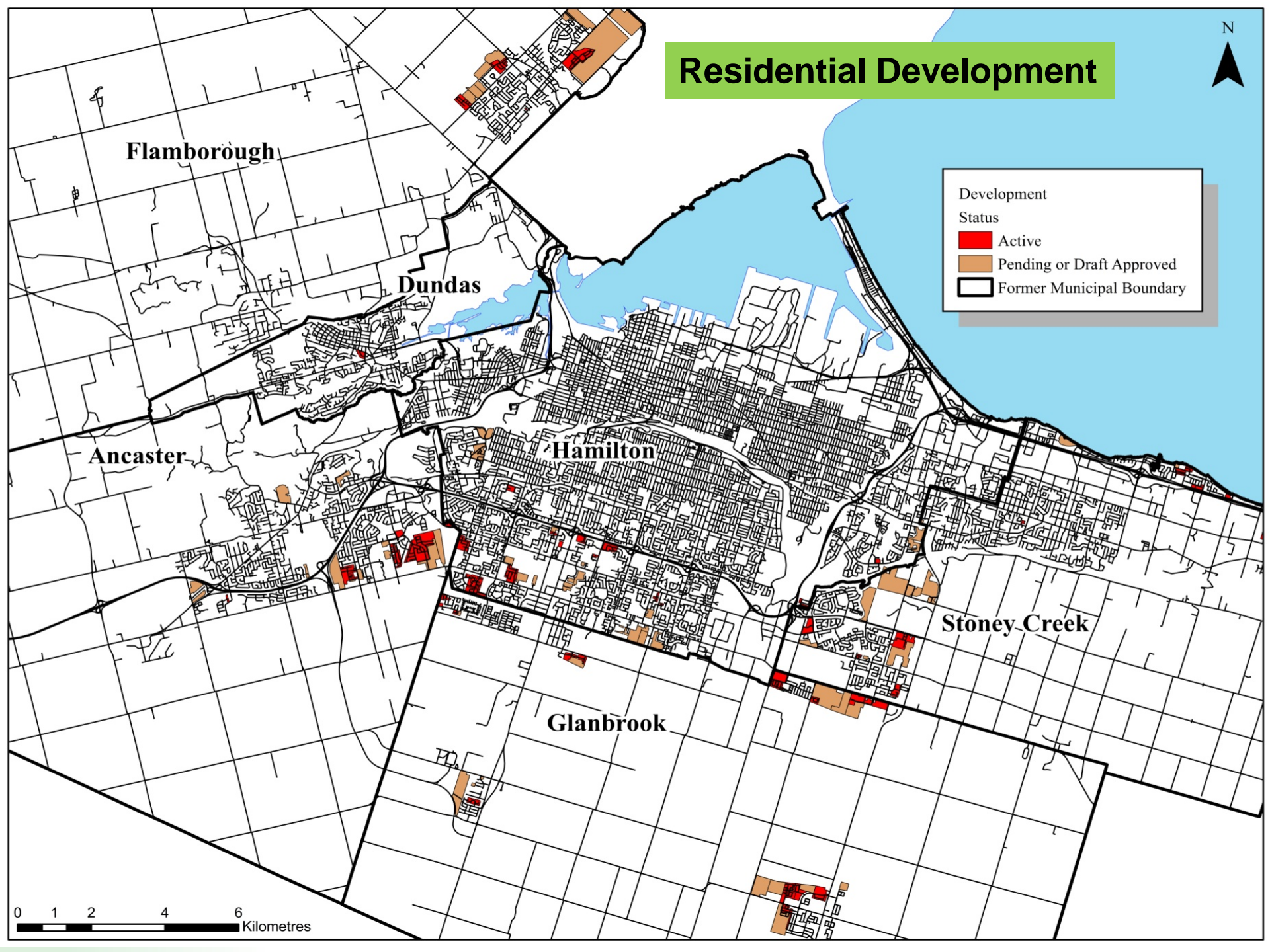
SOURCE: Ministry of Education, School Board Funding Projections for the 2012-2013 School Year (Sept 2012)

# Residential Development



Development Status

- Active
- Pending or Draft Approved
- Former Municipal Boundary



Flamborough

Dundas

Ancaster

Hamilton

Stoney Creek

Glanbrook

0 1 2 4 6 Kilometres

## Student Yields from New Residential Development

- Student yields are the calculation of the average number of students a newly constructed home will typically produce.
- Each dwelling type (eg. single family, townhome) has a unique yield.
- Yields vary from area to area.

### HWDSB Elementary Yields



= 0.24

100 Single Houses = 24 Students



=0.15

100 Townhomes = 15 Students

### HWDSB Secondary Yields



= 0.10

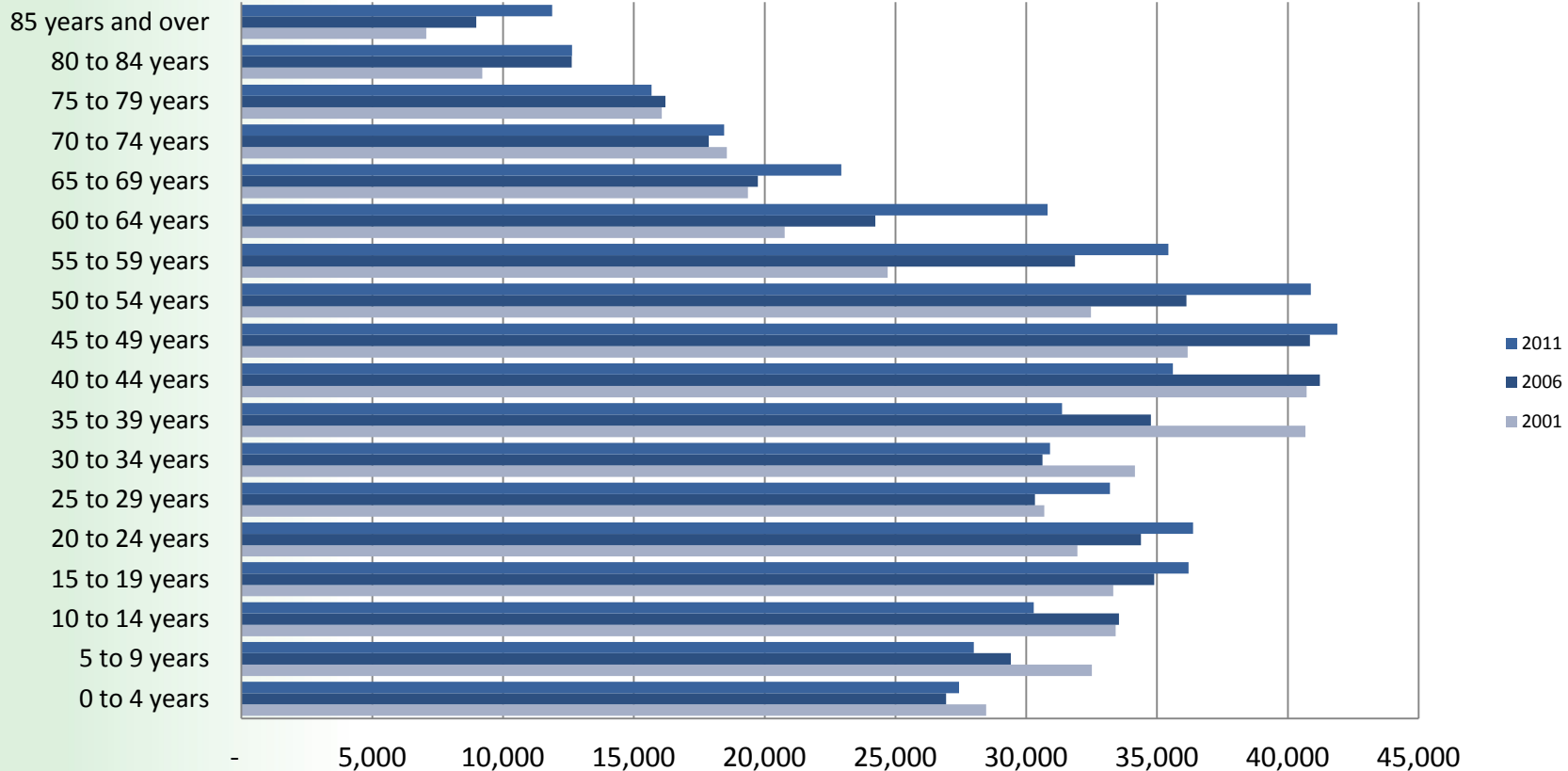
100 Single Houses = 10 Students



=0.05

100 Townhomes = 5 Students

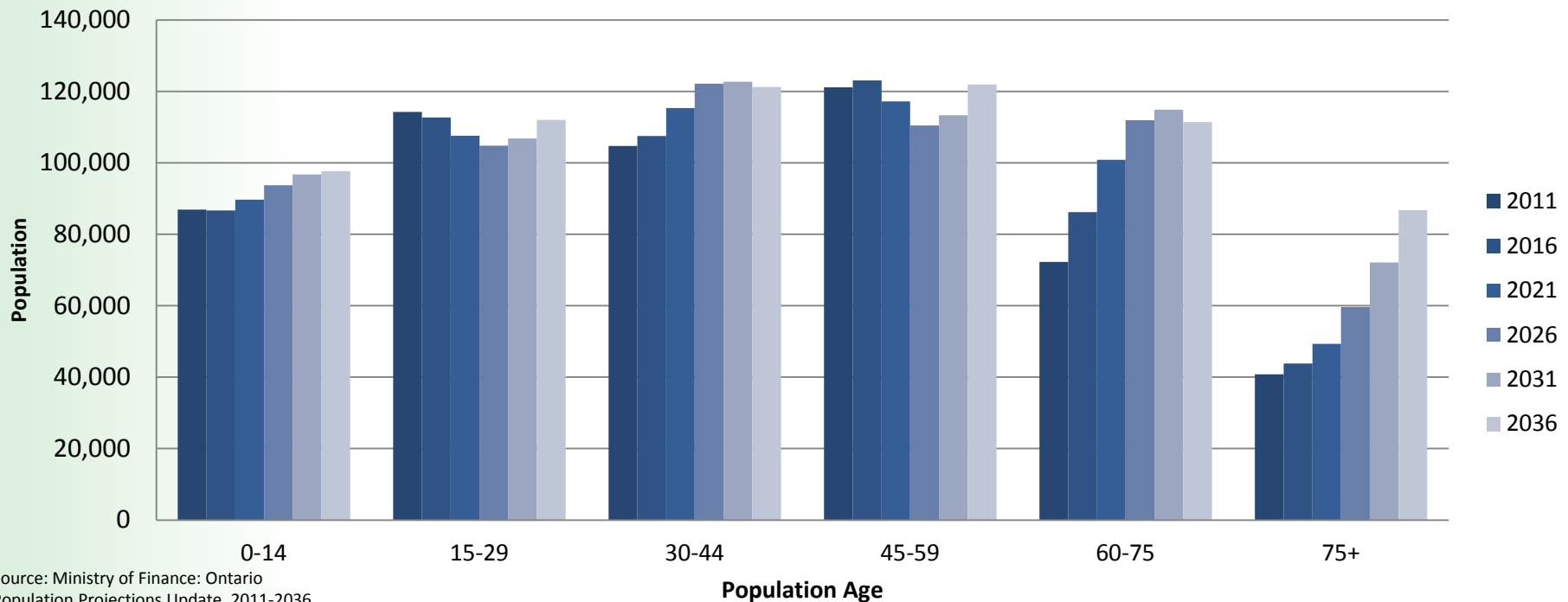
## Hamilton Population Age Profile 2001-2011



Source: Statistics Canada

- Hamilton's population increased 3.1% since 2006
- Province of Ontario increased by 5.7%
- Majority of Hamilton's population is 40-60
- Aging Population
- Small number of school aged children

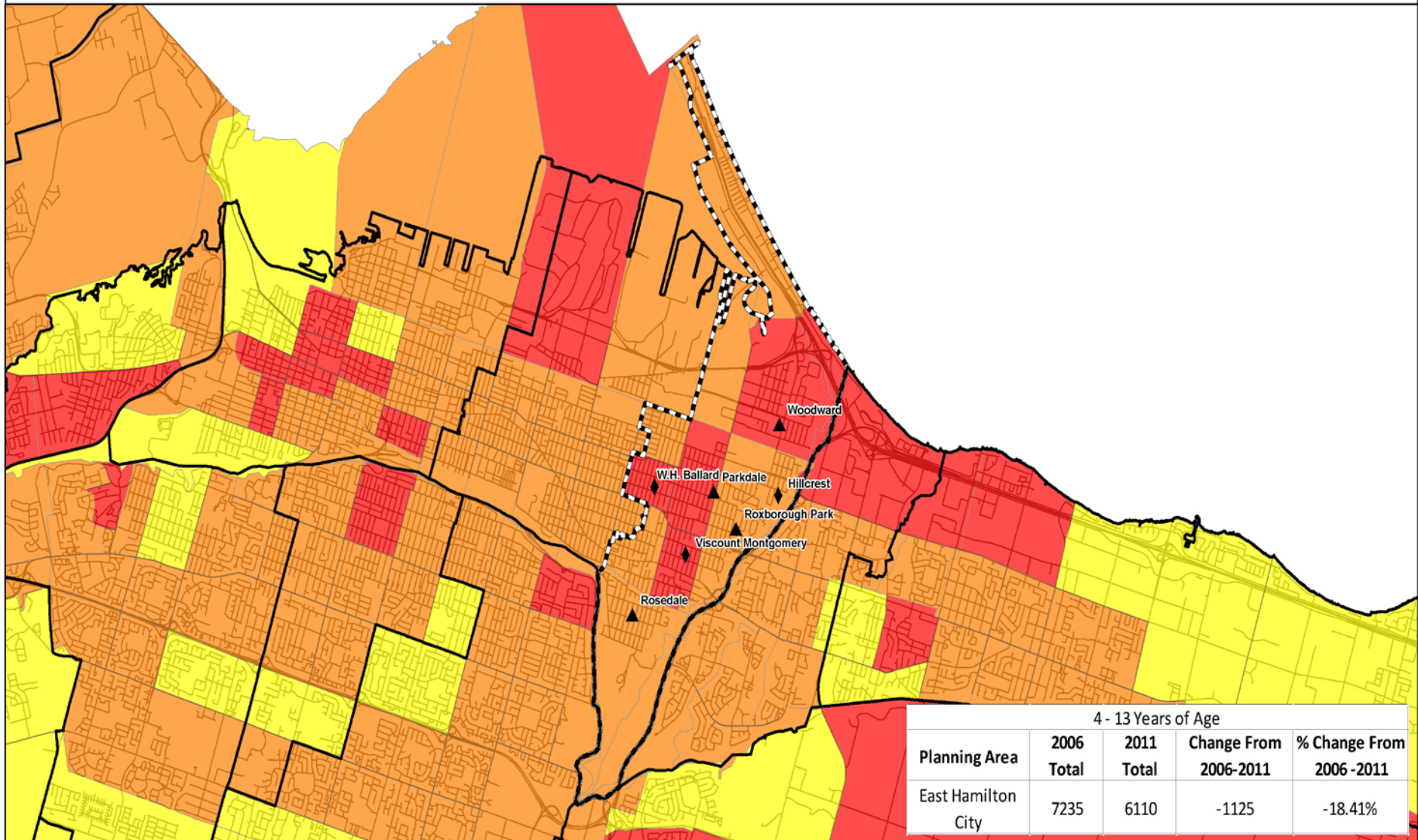
## Hamilton Population Projections 2011-2036



- Hamilton's aging population cohorts 60yrs and older are experiencing steep increases
- School aged population will experience moderate growth
- The expectation is that this will be reflected in a stabilized elementary panel in the future



# East Hamilton City 1 - Ages 4 to 13 Years Percentage Difference from 2006-2011



Planning Area	4 - 13 Years of Age			
	2006 Total	2011 Total	Change From 2006-2011	% Change From 2006 -2011
East Hamilton City	7235	6110	-1125	-18.41%

**% Difference from 2006 - 2011**

- 51% - 75%+
- 25% - 50%
- 1% - 25%
- 24% - 0%
- 50% - -25%

- Jr Elementary Schools
- Elementary Schools
- Middle Schools
- Secondary Schools
- Planning Areas
- Census Tracts

N

2 1 0 2

Kilometers

HAMILTON-WENTWORTH DISTRICT SCHOOL BOARD

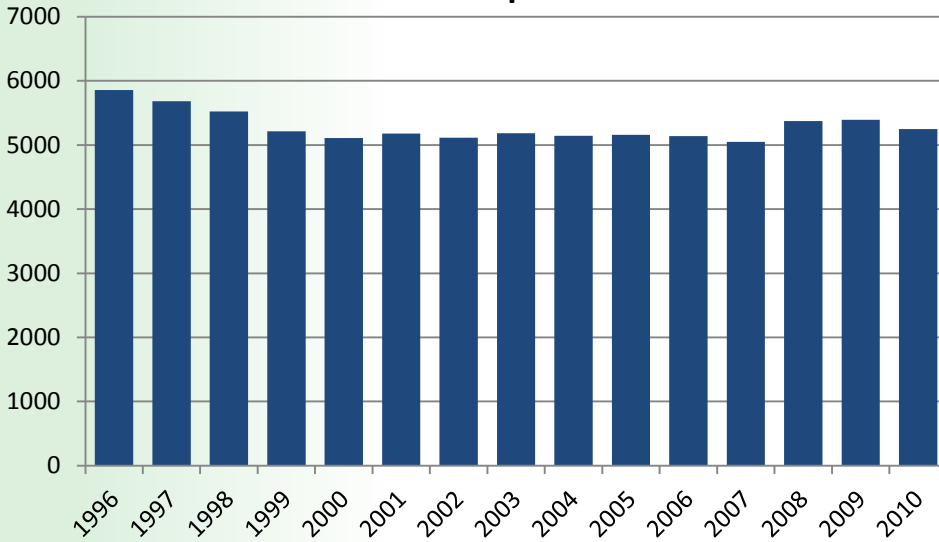
**Accommodation & Planning**

Note: Census Tract boundaries represented on this map illustrate the 2006 Census Tracts

Source: Statistics Canada

HWDSB Accommodation and Planning 2013

**Hamilton-Live Births per Year 1996-2010**

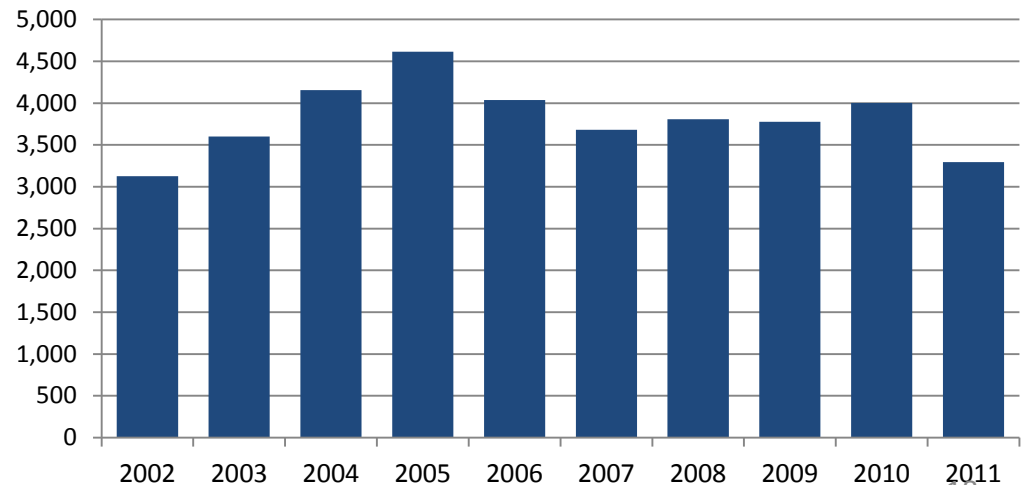


Source: 1996-2006, Health Statistics Division, Statistics Canada  
 Source: 2007-2010, Better Outcomes and Registry Network Ontario

- Total Fertility Rate during baby boom was 3.8 children per woman
- 2008 Hamilton Total Fertility Rate was 1.59 children per woman
- Replacement Rate is 2.1 children per woman

- Immigration is important to stability of Hamilton's population

**Hamilton New Permanent Residents per Year**



Source: Citizenship and Immigration Canada



# Key Themes

# **Identified Themes for Decision Making**

***Transportation***

***Community & Community Partnerships***

***Accessibility***

***Operations***

***Class Sizes***

***School Size***

# Themes/Factors for Decision Making

- Transportation
  - Bus ride times
  - Safety
  - Cost impacts
- Community & Community Partnerships
  - Community 'feel/spirit' , neighbourhood schools
  - How will change effect them?
- Accessibility
  - Accessibility at all schools (washrooms/second floors)

# Themes/Factors for Decision Making

- Operations
  - Scheduled day/timelines(2014)/staff impacts
- Class Sizes
  - What will change mean for class sizes?
- School Size
  - School size effects on students

## **7. New Considerations Heard from Public Meeting 2:**

- ??? How to summarize



## Option Discussions





## **Key Themes for decision making in forming our recommendation**

- With input the ARC has finalized their Key Themes

# Finalized Key Themes

*Transportation*

*Community & Community Partnerships*

*Accessibility*

*Operations*

*Class Sizes*

*School Size*

???

Additions

???



# 8. Start talking options!!!

## 9. Next Steps:

- Next working group meeting the committee will continue to formulate accommodation options
- At public meeting #3 we will share those options

**Next Working Group Meeting**  
**November 28<sup>th</sup>, 2013**  
**at Rosedale Elementary School**

**Objective**  
**Formulate ARC Option/s**

**Thank You**