



West Glanbrook

Accommodation Review Committee

Public Meeting # 2

Bell-Stone Mount Hope

Bell-Stone – November 6th, 2013

Meeting Norms

- Promote a positive environment
- Treat all other members and guests with respect
- Recognize and respect the personal integrity of each member of the committee
- Acknowledge democratic principles and accept the consensus and votes of the committee
- Use established communication channels when questions or concerns arise
- Promote high standards of ethical practice at all times

Why we are here tonight?

- Provide an overview of the Accommodation Review Process
- Why is HWDSB conducting Accommodation Reviews?
- Review the work completed to dated by the Accommodation Review Committee (ARC)
- Review the School Information Profiles
- Review of Major Themes from Public Meeting #1
- Group Discussion and Community Input



Overview of Accommodation Review Process

Accommodation Review Committee Mandate

“...is to lead the public *review and act in an advisory role* that will study, report and *provide recommendations* on accommodation option(s) with respect to the group of schools or school being reviewed for *the Board of Trustees’* consideration and decision.”

Committee Membership

- Chair

Voting Members	Non-Voting Members
Two (2) parent representatives who are members of School Council and/or Home and School Association from each school	The Trustee(s) of each school(s) under review
One (1) parent representative who is not a member of School Council or Home and School Association from each school	The Superintendent(s) of Student Achievement for each school(s) under review;
One (1) teaching representative from each school under review;	The Principal from each school under review
One (1) non-teaching staff from each school under review;	

- Also available are an administrative support for minute taking and a dedicated resource staff to ensure compliance of the Board's policy and information relevant to the Accommodation Review.

What will the ARC consider when developing their options?

Reference Criteria (as outlined in the Board policy):

- a) Facility Utilization
- b) Permanent and Non-Permanent Accommodation
- c) Program Offerings
- d) Quality of Teaching and Learning Environments
- e) Transportation
- f) Partnerships
- g) Equity

Additional items identified by the committee and community are also considered.

How does the ARC process work?

There are two kinds of meetings.

Working meetings – ARC committee works to identify various options to present to the community and trustees. Public can attend but not participate.

Public meetings – There are four public meetings. This is where the ARC presents its options to gain feedback from the community. Public will provide input that will be used by the ARC as it prepares its final recommendations.



Where Are We in the Accommodation Review Process?

Board Approval June 2013

- Preliminary School Accommodation Review Report



Preparation Phase June 2013-Sept 2013

- Preparation of background material
- Committee members are appointed



Community Review Phase Oct 2013-Jan 2014*

- Board Staff share school accommodation option
- Accommodation Review Committee develops recommendation(s)



Board Review Phase Feb 2014 – May 2014*

- Director's Accommodation Review Report
- Public delegations at Standing Committee Meeting



Projected Decision by Trustees May 2014*

Public Meetings

October 9th, 2013 - Complete
November 6th, 2013
December 4rd, 2013
January 22nd, 2014

Working Group Meetings

October 2nd, 2013 – Complete
October 16th, 2013 – Complete
October 30th, 2013 – Complete
November 13th, 2013
November 27th, 2013
December 11th, 2103
January 15th, 2014
January 29th, 2014

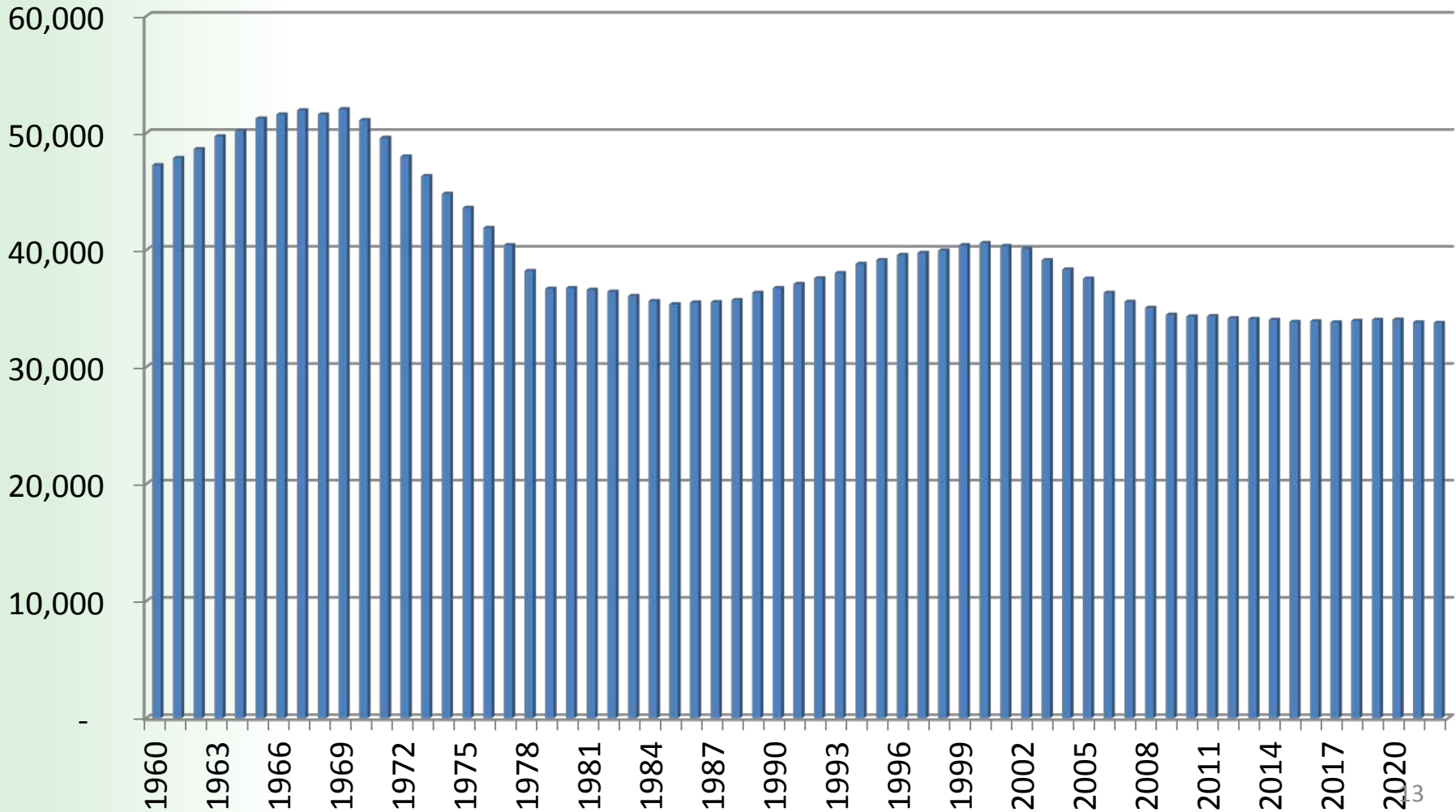


Why is HWDSB conducting Accommodation Reviews?

Challenges faced by HWDSB and Community:

- Aging facilities - average age of our buildings is 51 yrs.
Even after accounting for an aggressive building program that has seen the closure of 29 elementary schools and the construction of 9 new schools and 6 rebuilds since 2000
- Declining Student Enrolments
Leaves over 5000 excess elementary pupil places
- Ministry of Education funding for facility enhancements and provincial benchmarks are insufficient to cope with our current facility needs

Historic and Projected Elementary Enrolment



Provincial funding for schools:

- Funding formulas largely based on enrolment
 - Declining enrolment generates financial and operational pressures for school boards
- When enrolment declines, a school may be underutilized, but the costs of maintaining the school do not decline correspondingly.



Work Completed by the Accommodation Review Committee

Since Our Last Public Meeting:

- 2nd and 3rd Working Group Meetings
- Requested additional data/ information
 - Development, school organization, capital upgrades info
- Reviewed data contained in the School Information Profiles (SIPs)
- School Tours (completed 1 of 2 schools)
- Analysis of community feedback from public meeting #1 - key themes



School Information Profiles



School Information Profiles (SIPs)

- Required by Ministry of Education Pupil Accommodation Review Guidelines (June 2009)
- Assembled by Hamilton-Wentworth District School Board Staff

Intent of the SIP

- Familiarize the ARC members and the community with the schools under review
- Provide the foundation for discussion and analysis of accommodation options
- Help ARC members and the community to understand how well the schools meet the objectives of the *Reference Criteria* as outlined in the *Terms of Reference*

	1. Enrolment vs. Available Space	Bell-Stone	Mount Hope	Total
#	Data to be Provided to the ARC			
1	Current Enrolment	61	290	351
2	Projected Enrolment in 5 years	62	316	379
3	Projected Enrolment in 10 years	63	331	394
4	On-The-Ground (OTG) Capacity	181	365	546
5	Number of Portables on Site	0	0	0.0
6	Current Utilization Rate	34%	79%	57%
7	Projected Utilization Rate in 5 years	34%	87%	61%
8	Projected Utilization Rate in 10 years	35%	91%	63%
9	Current Space Surplus / Shortage (Pupil Places)	120	75	195
10	Projected Space Surplus / Shortage (Pupil Places) in 5 years	119	49	168
11	Projected Space Surplus / Shortage (Pupil Places) in 10 years	118	34	152

2. Administrative and Operational Costs Associated with Schools

Bell-Stone

Mount Hope

Total

Data to be Provided to the ARC

1 Expenditures on School Administration at School

\$179,769

\$182,049

\$361,818

2 Expenditures on School Operations at School

\$160,292

\$247,642

\$407,934

3 Administrative Costs per m²

\$124.49

\$55.84

\$180

4 Administrative Costs per Student

\$2,947

\$627

\$3,575

5 Operational Costs per m²

\$111

\$75

\$187

6 Operational Costs per Student

\$2,572

\$783

\$3,356

3. Condition of School

Bell-Stone

Mount Hope

Total

Data to be Provided to the ARC

1 What is the replacement value of the School?

\$4,638,168.64

\$7,363,885

\$12,002,054

2 Current Facilities Condition Index (FCI) for the School?

38.48%

16.56%

3 Expected Facilities Condition Index (FCI) for the School in 10 years

49.83%

23.27%

4. School's Physical Space to Support Student Learning and Child Care Services		Bell-Stone	Mount Hope	Total
#	Data to be Provided to the ARC			
1	Does the School have a Library/Resource Centre?	Yes	Yes	
2	Does the School have at least one dedicated Science Room?	No	Yes	
3	Number of Science Rooms in School	0	1	
4	Does the School have a Gymnasium/ General Purpose Room?	Yes	Yes	
5	Is there a stage in the Gymnasium	Yes	Yes	
6	Does the school have a Computer Lab?	Yes	No	
7	Does the school have a dedicated Learning Resource Room?	Yes	Yes	
8	Is there a childcare centre located on site	No	No	
9	Is there a Before & After school program	No	Yes	
10	Is there a Breakfast / Nutrition program available for students at the school?	Yes-Nutrition	Yes-Nutrition	
11	Other			22

6. Range of Extracurricular Activities		Bell-Stone	Mount Hope
#	Data to be Provided to the ARC		
1	List of Extracurricular Activities at each school	<p>Bell-Stone: Track, Cross Country, Library helpers, bus patrol, PA Announcers, Kindergarten assistants, Playground monitors (Kindergarten), School Store helpers, Milk Moovers, Mad Science, After School scholars, Boys book club, checkers, dance club, Student Safe-school Team</p>	<p>Mount Hope: Lunch helpers, Animal Awareness Club, Newspaper Club, Silver Birch Reading, Red Maple Reading, Bus Monitors, Mad Science, Highland Dancing, Floor Hockey, Go Girls, Sister Act, Swimming, Recycling, 3 Pitch, Basketball, Volleyball, Choir, Cross Country, Zumba, Yearbook, Talent Show, PA Announcers, School Store helpers, After School scholars, Soccer, Art Club</p>

7. Adequacy of the School's Grounds for Healthy Physical Activity and Extracurricular Activity

Bell-Stone

Mount Hope

Data to be Provided to the ARC

1 Does the School have hard surfaced outdoor play area(s)?

Yes

Yes

2 Does the School have a Playing Field?

Yes

Yes

3 List types of playing fields available (e.g. baseball, football, soccer, track etc.)

-

-

8. Accessibility of the School for Students with Disabilities

Bell-Stone

Mount Hope

Data to be Provided to the ARC

1 Does the school have at least one barrier-free entrance?

Yes

No

2 Are all levels of the school wheelchair accessible?

Yes

No

3 Does the school have appropriate communication systems for the visually impaired?

No

No

4 Does the school have appropriate communication systems for the hearing impaired?

No

No

5 Do students have access to barrier free washrooms?

No

No²⁴

9. Location of School		Bell- Stone	Mount Hope
#	Data to be Provided to the ARC		
1	What percentage of the students are provided transportation services to and from school?	66%	74%
2	Longest bus ride to school (minutes)	49.0	41.0
3	Shortest bus ride to school (minutes)	18.0	27.0
4	Average bus ride to school (minutes)	38.3	32.0
5	What percentage of the students live outside the school's catchment area?	31.1%	6.9%
6	Is the school within 500m of a municipal bus route?	No	Yes

11. Location of the School (within community)

Bell-Stone

Mount
Hope

Data to be Provided to the ARC

1 How far is the school from its nearest HWDSB school (distance/name)?

Bellmoore/
4.7 km

Bell-
Stone/6.5
km

12. Facility for Community Use

Bell-Stone

Mount
Hope

Data to be Provided to the ARC

1 List of co-curricular or extracurricular activities in which community members actively participate on a regular basis

All School
use

House
League
Practice,
Gymnastics

2 Average Number of Hours per Week that School Grounds are scheduled for use by Community Groups

NA

0.0

3 Average Number of Hours per Week that School Building is scheduled for use by Community Groups

0

9
26

13. School as Local Employer		Bell-Stone	Mount Hope	Total
#	Data to be Provided to the ARC			
1	Does the School have a Full-time Principal?	0.00	1.00	1.0
2	Number of Vice-Principals at the School (FTE)	0.50	0.00	0.5
3	Number of Office Administrators at the School (FTE)	1.00	1.00	2.0
4	Number of Teachers at the School (FTE)	5.00	16.50	21.5
5	Number of Education Assistants at the School (FTE)	0.00	2.00	2.0
6	Number of Caretaking Staff at the School (FTE)	1.50	2.25	3.8
7	Number of designated Early Childhood Educators	0.00	2.00	2.0

15. Additional Information		Bell-Stone	Mount Hope
#	Data to be Provided to the ARC		
1	Number of Parking Spaces	21 + 1 Handicap**	36 + 1 Handicap

** Bell-Stone also has a gravel parking lot that can hold an additional 15-20 cars



Key Themes from Public Meeting #1

Process of Identifying Key Themes

- Analyzing recorded data from public meeting using qualitative analysis techniques
- Reading through data
- Focusing of main ideas and identifying patterns in the data
- Summarizing the main themes and developing a list of important findings



Key Themes

1) Boundaries

Bell-Stone/Bellmoore

High school

Urban boundary

Key Themes

2) Facility

- Accessibility
- Capital repairs including:
 - Tarmac (play area)
 - Additional parking
 - Air conditioning
 - More washrooms/upgrades
 - Additional FDK room
 - New windows
 - Revamp of bus loading zone
- Preference for brick and mortar over portables

Key Themes

3) Transportation

- Concern over lengthy bus ride times
- Reduction in bus times for some students

4) Timeline/Transition

- Closing June 2014 is too quick
- Building readiness



Key Themes

5) Programming

- Class sizes
- New opportunities
- Support for Special Education Students



Group Discussion



CONTRIBUTE
YOUR
THINKING



Listen together
for patterns, insights,
& deeper connections



Facilitated Group Discussion

- Please refer to the package on your table
 - Agenda
 - Questions
 - Key Themes
 - Reference Criteria

- Discuss one question/issue at a time
- ARC Working members will take notes on the discussions

1. Are the common themes capturing the concerns of the public and which common themes resonate most with your group?



2. In creating an ideal elementary learning facility, what considerations do you feel are most important?

Next Steps:

- Next two working group meetings the committee will formulate accommodation options
- At public meeting 3 they will share those options
- If you have any ideas of your own please share with an accommodation committee member from your school



Thank You

**Next Public Meeting : December 4th,
2013 at Mount Hope School
6:00 – 9:00 pm**