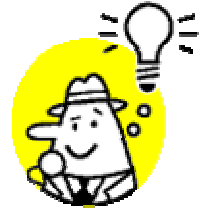


Inferring Meaning From Pictures/Cartoons

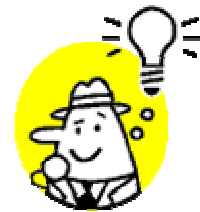


After viewing the cartoon/picture make an inference as to its meaning by:

- describing the cartoon
- telling what you have to bring to the cartoon to understand it
- telling what message the artist is trying to portray

Remember to use the following strategies when trying to infer meaning.

- use the pictures
- use your schema
- use the words in the text
- reread the selection
- think about the piece (or words)
- listen to the ideas of others
- make connections

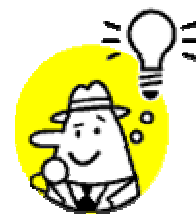


NORMandCompany.com

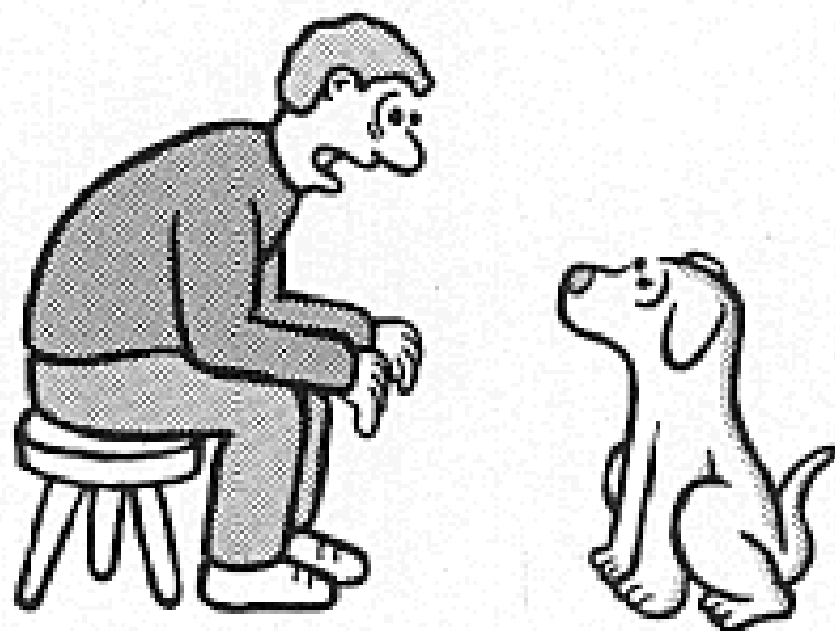


© 2000 Paul Kinsella

Paul Kinsella



NORMandCompany.com

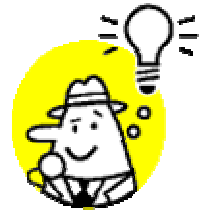


© 2000 Paul Kinsella

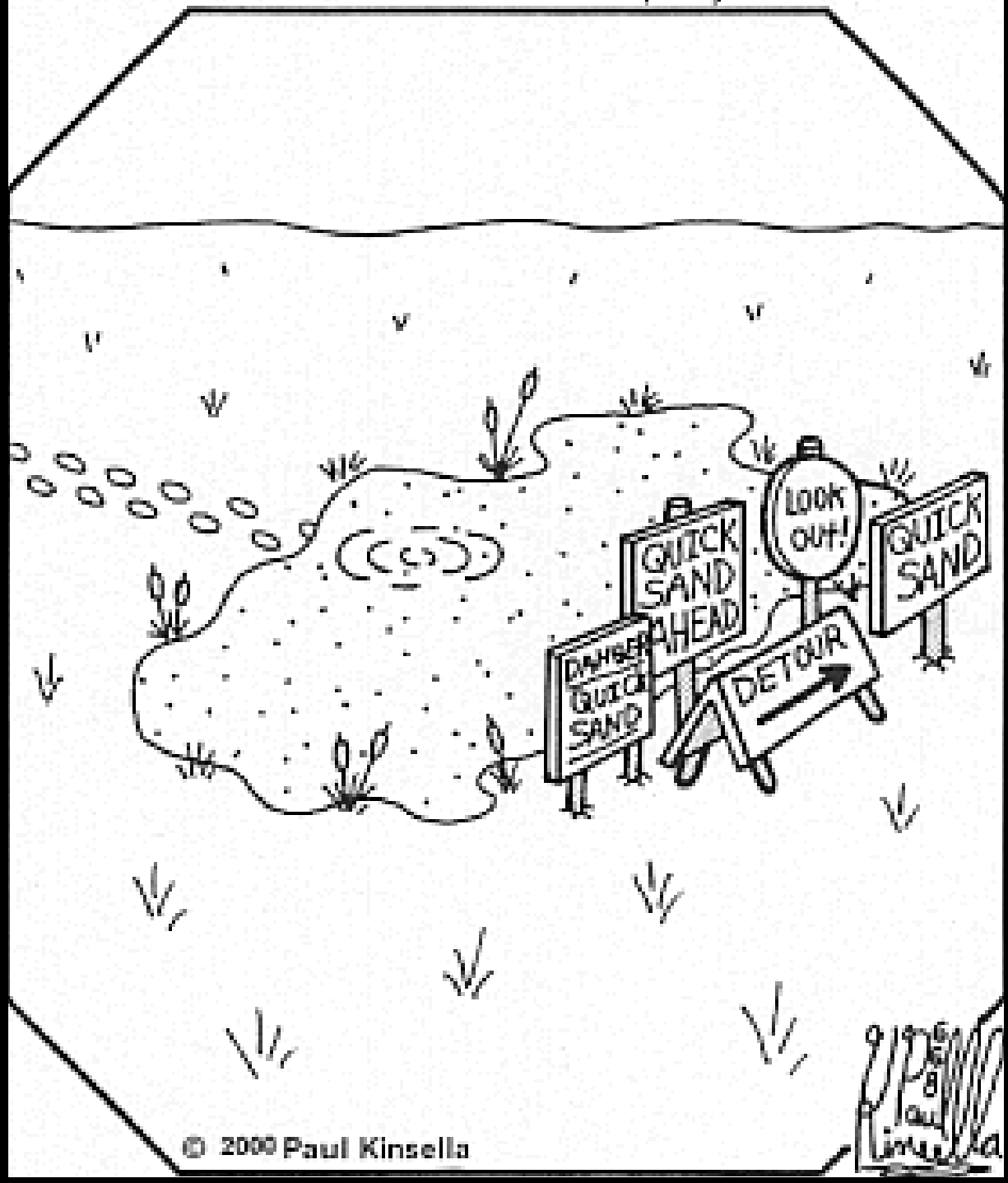
9/19/00
Paul
Kinsella

(In loving memory of my dog Muffy)

“Muffy, you’re not human - you
have no idea what it’s like.”



NORM andCompany.com



© 2000 Paul Kinsella

Paul Kinsella



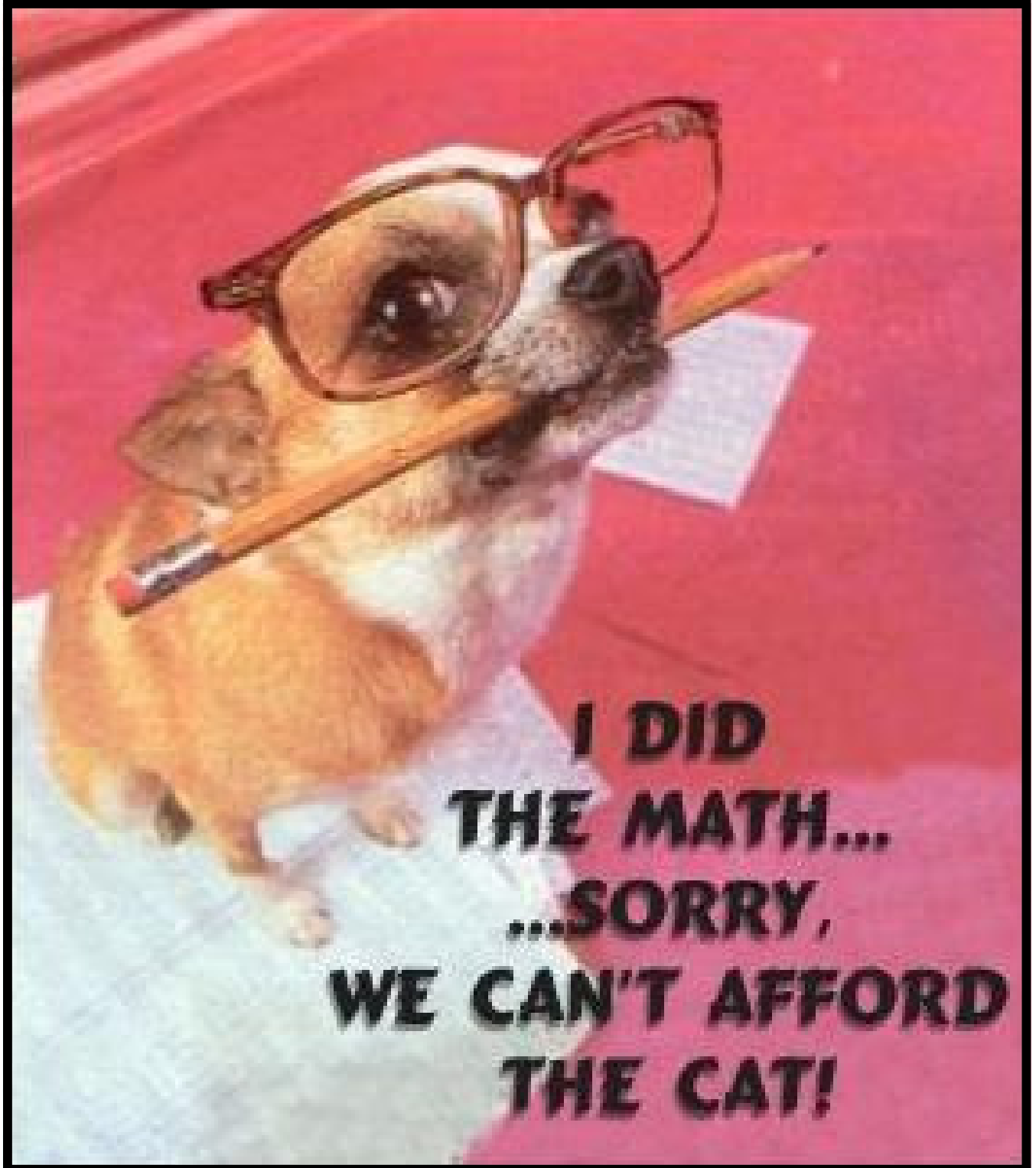
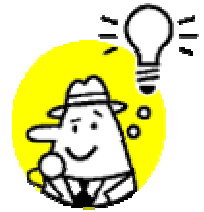
NORMandCompany.com



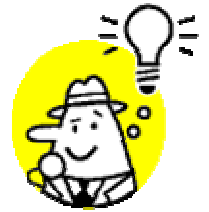
© 2000 Paul Kinsella

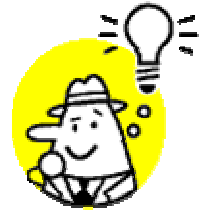
Paul
Kinsella

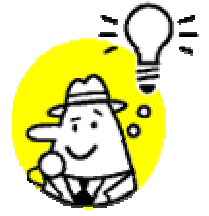
"What do you feel like doing today?"

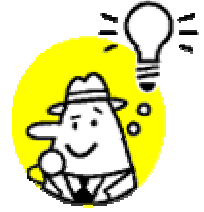


**I DID
THE MATH...
...SORRY,
WE CAN'T AFFORD
THE CAT!**









You don't
have to be
crazy
to be
MY friend...

but it
sure helps!



