



## THE CHEDOKE CHRONICLE

500 BENDAMERE AVENUE  
HAMILTON, ONTARIO L9C 1R3  
TELEPHONE: 905-388-5833  
FAX: 905-388-8278  
TWITTER: @CHEDOKE\_HWDSB

**Hamilton-  
Wentworth District  
School Board**

**Friday,  
April 20,  
2018**

MRS. P. MOCHRIE, PRINCIPAL  
MRS. J. CORBIN HARPER, VICE PRINCIPAL  
MS. L. ROMANO, SUPERINTENDENT

MS. R. ZINKEWICH, OFFICE ADMINISTRATOR  
MRS. B. WOODS, OFFICE ASSISTANT

**See our Calendar on our Website for Upcoming Events!**

Dear Chedoke Community,



At the YMCA we believe that participation in Child Care and recreational programs help children to grow up healthy, positive, confident and strong. In our community not every child can afford the fees to participate in programs. By giving to our Strong Kids campaign you allow children to participate in a variety of programs which will give them opportunities to make new friends, develop positive social skills and have a better future .

On Wednesday, April 25th we will be hosting our Strong Kid's Move- a thon in both the child care centre and the after school program.

It is now easier than ever to spread the word to friends and relatives and collect donations on line. Simply go to [Ymoveathon.ca](http://Ymoveathon.ca) to begin collecting pledges or to donate.



Earlier this month, two students participated in the **Family of Schools Oral Communication Festival.**

Olivia E. and Fabiya H. presented their speeches and did an excellent job.

We are very proud of the way they represented Chedoke School!



Please join us for our Open House

on

May 9, 2018

5:00—6:30pm

We will be breaking ground for our NS4C Natural Play Space  
at 4:45pm

School Trustee, Wes Hicks  
Councillor, Terry Whitehead  
Superintendent, Laura Romano  
Media

Will be joining us!



*BBQ and Book Fair on site*

REMINDER:



School Council  
April 25, 2018  
6:00 pm



JK/NEW SK  
ORIENTATION  
May 23, 2018—3:30-4:45pm

Registration begins at 3:15.  
Rotations start promptly at 3:30.  
Please bring your child with you.

If parents have questions or concerns regarding transportation,  
ie. Late buses, etc....

Please call the Transportation Department at:

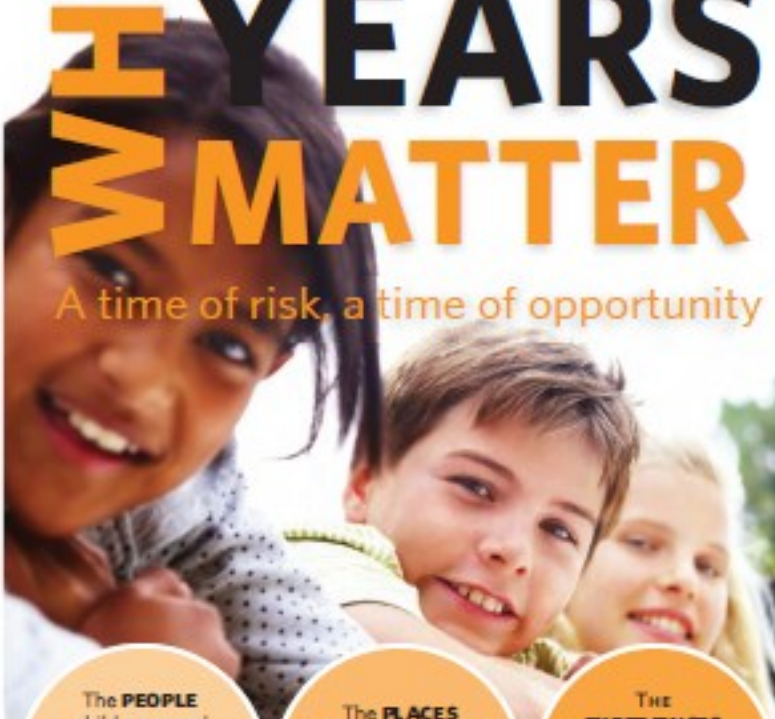
905-523-2318

<http://www.hwdsb.on.ca/about/transportation-at-hwdsb/>



# THE MIDDLE YEARS WHY MATTER

A time of risk, a time of opportunity



The **PEOPLE** children spend their time with have the power to teach children the skills they need to be successful.

The **PLACES** where children live, play and learn have a lot to do with health and happiness later in life.

The **EXPERIENCES** CHILDREN HAVE IN THEIR MIDDLE YEARS HAVE lasting effects ON BRAIN DEVELOPMENT.

The Middle Years Development Instrument (MDI) is used to understand more about children's thoughts, feelings and experiences inside and outside of school. The MDI is a questionnaire that gives schools and communities valuable information about the strengths and needs of their children.

To find out more, read on about the MDI or visit [EARLYLEARNING.UBC.CA/MDI](http://EARLYLEARNING.UBC.CA/MDI)



HUMAN  
EARLY LEARNING  
PARTNERSHIP



## MIDDLE YEARS RESEARCH SHOWS:

INCREASED  
DECREASED

Poverty  
Stress  
Bullying  
Mental Illness

Self-confidence  
Empathy  
Optimism  
Overall Health

## WHAT MATTERS MOST?




Caring Adults  
Happiness  
Sleep  
Friendships  
Nutrition  
After-School Activities

## SOCIAL-EMOTIONAL LEARNING teaches children how to:

- Control their emotions
- Manage their behaviour
- Feel self-confident
- Express their needs
- Show empathy
- Adapt to change
- Set goals
- Build strong friendships
- Cope with stress



### HOW DOES THE MDI WORK?

-  Participation is voluntary. Parents or students may withdraw at any time.
-  Students fill out the MDI during class time.
-  Reports and maps are produced to help schools and communities understand what students have said.

### HELLO PARENTS!

The Middle Years Development Instrument (MDI) is a questionnaire that asks children about their thoughts, feelings and experiences inside and outside of school. It is not a test for reading, writing or math. The MDI looks at children's points of view on:

- Social and Emotional Development**  Optimism, empathy, happiness, prosocial behaviour, self-esteem
- Connectedness**  Presence of supportive adults, sense of belonging with peers
- School Experiences**  Academic self-concept, school environment, bullying
- Physical Health and Well-being**  Health, body image, nutrition, sleep
- Use of After-School Time**  Time spent playing sports, video games and watching TV

### HOW THE DATA ARE USED:

- The MDI helps us understand the "whole child" not just how he/she is doing in school.
- Schools and communities have information about the strengths, needs and wishes of children in their neighbourhoods and school districts.
- People can see neighbourhood differences in the number of children who are healthy and happy.
- Adults can start thinking about ways to build more and stronger relationships with the children in their homes, schools and communities.
- Better plans can be made about the kinds of after-school activities that should be offered to children.
- Better decisions can be made about how organizations provide services, spend money and share resources.
- Schools and communities can set goals for the future and can learn about how children are doing over time.

#### THE MDI IS:

A questionnaire filled out by Grade 4 to Grade 8 students.

#### THE MDI IS NOT:

A tool for comparing individual children, teachers, classrooms or schools.

#### Questions:

Contact The Research Department  
at Hamilton-Wentworth District School Board  
905-527-5092

HUMAN  
EARLY LEARNING  
PARTNERSHIP



Sincerely,

Priscilla Mochrie  
Principal

Jo-Ann Corbin Harper  
Vice-Principal