

PRINCIPALS MESSAGE

I would like to thank the Allan Greenleaf community for such a warm welcome when I arrived last Thursday. I look forward to meeting and working with all of you over the next two months.

The report card is one component of the communication between teachers and parents regarding student progress. We hope that many of you will be able to attend Parent/Teacher Interviews that will take place on the evening of Thursday Nov. 1 and Friday November 2nd. This year once again, we are using [school appointments online](#) to book interviews. This went live on Wednesday Oct. 24 and closes Thursday Nov. 1 at noon. Families can schedule interviews that best fit with their schedules on a first-come, first-serve basis. **Instructions for how to book were sent home and are on our website.**

As we enter the month of November, we are amazed at all of the things happening around the school. Our extra-curriculars are in full swing with the addition of Elf Junior. Performances are December 11, 12 & 13. More information to come. Student Council will also be leading our Remembrance Day Assembly on Thursday, November 8 at 10:00 am. This very solemn event can evoke many emotions with our students. Although we aim to be protective of our students, we can never be aware of all of the experiences that each of our children have nor how they will interpret the sharing of information about Remembrance Day and all that it means to Canadians. Please prepare your child ahead of time, as needed. Children that are Beavers, Cubs, Scouts, Sparks, Brownies or Guides are welcome to wear their uniforms on this day. Although we would love to welcome all parents, because this is a whole school assembly, we invite only parents of students that are participating in the assembly in order to adhere to the Fire Code.

November 19-23 is Anti-Bullying Awareness Week. At Allan A. Greenleaf we continually strive to create and maintain a safe learning environment for all of our students. However, there are occasions where unfortunate events do happen. Through various programs at school, including our Virtues Program, Community Circles and Restorative Justice, announcements and daily in class teachings etc., staff are teaming with students to better understand what bullying is, and what to do about it if they are being bullied. We are pleased to have our

community officer Melissa Drozd speak to our Gr. 2's on Thursday, Nov. 1st.

Our sincere thanks to all parents and guardians for your ongoing support as we continue the work we do at Allan A. Greenleaf School.

Mrs. L. Behr & Ms. L. Snell

STUDENT COUNCIL ELECTIONS

Thank you to all the grade 7 and 8 students that put their names forward to run for Student Council. It takes a great deal of courage to prepare a speech and get up and say it in front of your peers and your teachers. Congratulations to all of you! Below are the results.



Co-Prime Ministers
Treasurer
Social Convenor
Secretary

Michael N/Sanveer S
Paige G
Kavinuka T
Emily S

Non-elected members are Auxiliary Members that support Council and committees at large.

Students will attend School Council Meeting as needed.

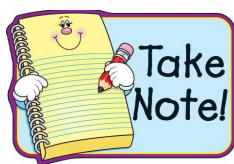
GRADE 7 & 8 INFORMATION NIGHTS-WDHS

Learn about all of Waterdown District High School's *exciting secondary school options*, while getting to know your future school and teachers, at our **Grade 7 & 8 Information Nights: Wednesday, November 21, 2017**
6:00-7:30pm.



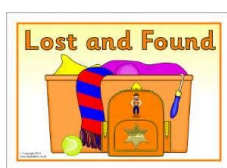
DATES TO REMEMBER

Nov. 1-Parent Teacher Interviews 6:00-8:00pm
 Nov. 2-PA Day/Parent Teacher Interviews
 Nov. 8-Remembrance Day Assembly
 Nov. 12-Primary/Junior Swim Meet
 Nov. 13-Picture Re-take Day
 Nov. 14-Gr. 4-6 Bulldogs Game
 Nov. 15-School Council Meeting
 Nov. 16-JK-Gr2. Jeremy Fischer
 Nov. 19-23-Bullying Awareness & Prevention Week
 Nov. 21-Gr. 5's Scientists in the School
 Nov. 30-Virtues Assembly



LOST & FOUND

Our Lost and Found pile seems to grow tremendously on a daily basis. We try to encourage the students to go through the lost and found when they come into the office and notify us of lost articles. At the end of every month we will be donating our lost and found to a needy community organization. Please encourage your child(ren) to go through this bin if they have lost something. All articles will be folded and put on tables during parent/teacher interviews. Please take a moment to go through the tables.



LUNCH DROP OFF

The main office at Greenleaf is a very busy place. Our office administrators work very hard and really care about your children. In addition to their many office responsibilities, frequently throughout the day, you will see them administering medical attention to a variety of bumps and boo boos. One way that you can support us in the office is by ensuring that your child(ren) have all they need to support them at school before they leave in the morning, lunch, musical instruments, gym clothes, etc.

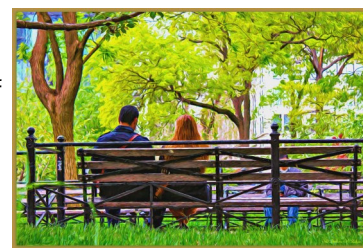


NUTRITION EXEMPTION DATES 2018-2019

October 31-Halloween
 November-6- Diwali
 December -Hanukkah, Christmas
 January 25-PJ Day, Hot Chocolate and cookies
 February 14-Valentine's Day
 March - St Patrick's
 April 12-Easter Festivities
 April 22-Earth Day Dirt & Worms
 June 20-Grad

"VIRTUE OF THE MONTH: PEACEFULNESS

You are practicing **PEACEFULNESS** when you find inner peace, become very still and think peaceful thoughts. Observe and think about your feelings, like anger, instead of acting with anger. To be a peacemaker, use peaceful language instead of name-calling, yelling or gossiping. Avoid aggressive or violent actions. Talk things out and listen to the other person too. Then look for a peaceful solution. Peacemakers find there are lots of creative ways to solve any problem. Violence never solves anything.



I am peaceful. I use peaceful language and find peaceful solutions to any problem that arises. I find my inner peace and let it carry me gently through the day..

ELF JR PRODUCTION

Our production of Elf Jr. is in full swing! We are enjoying watching the amazing talents of our students blossom. Our Primary Choir (Grades 1-4) has also started and will be a part of the musical! We are very lucky to have the tremendous support of our parent community! They too are putting in a lot of time and lending their talents to our production. Tickets will be on sale soon! Please save the date—our performance days are Tuesday, December 11th, Wednesday, December 12th and Thursday, December 13th.

DECEMBER
11, 12, 13!



USED BOOKS COLLECTION

Fall cleaning? We are once again collecting any gently used books you are discarding. The books collected will be shipped to a free community library near Mombasa, Kenya run by the Haller Foundation. We have teamed up with Rotary Burlington (Lakeshore) who will facilitate our shipping costs. Our collection begins November 1st and will continue to November 15. Please consider donating your gently used books. More details will be communicated to our students by Student Council and a blast will be sent out early next week! Thank you in advance!

